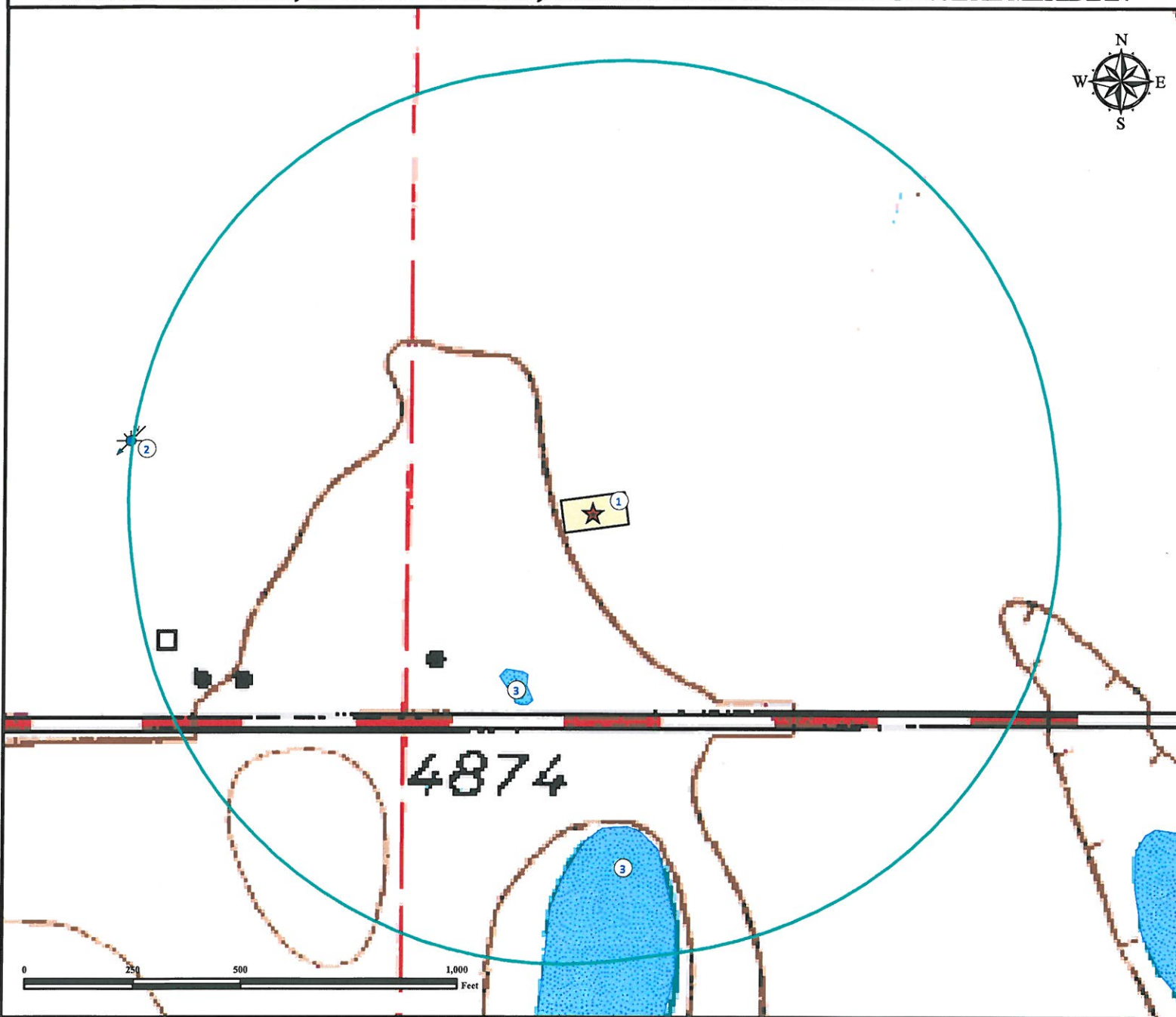


Hydrology Map

BALDRIDGE 8-1 FACILITY

SW¼ SE¼ SECTION 36, TOWNSHIP 7 NORTH, RANGE 67 WEST OF THE 6TH PRINCIPAL MERIDIAN




1. Proposed BALDRIDGE 8-1 FACILITY.
2. Water Well (Permit #125563) is $\pm 1005'$ NW.
3. Ponds are $\pm 404'$ SW and $\pm 691'$ S.

Legend

-  Proposed Facility
-  1000' Radius
-  Water Well
-  Pond

Reference Location

** All Measurements are Made from Reference Point  **

Lat: 40.524720° Long: -104.84008° (NAD83)
Elevation: 4878 Feet

Use our resources to find yours!
www.petro-fs.com
(303) 928-7128

Field Date: 03/08/2012
Drafting Date: 03/21/2012
Drafter: DLR
Checked By: BHF

Data Sources:
- TOPO courtesy USGS
- Water Wells courtesy of CDOWR
- Waterbody data is courtesy of NHD

Prepared for:

 **BAYSWATER**
EXPLORATION AND PRODUCTION, LLC