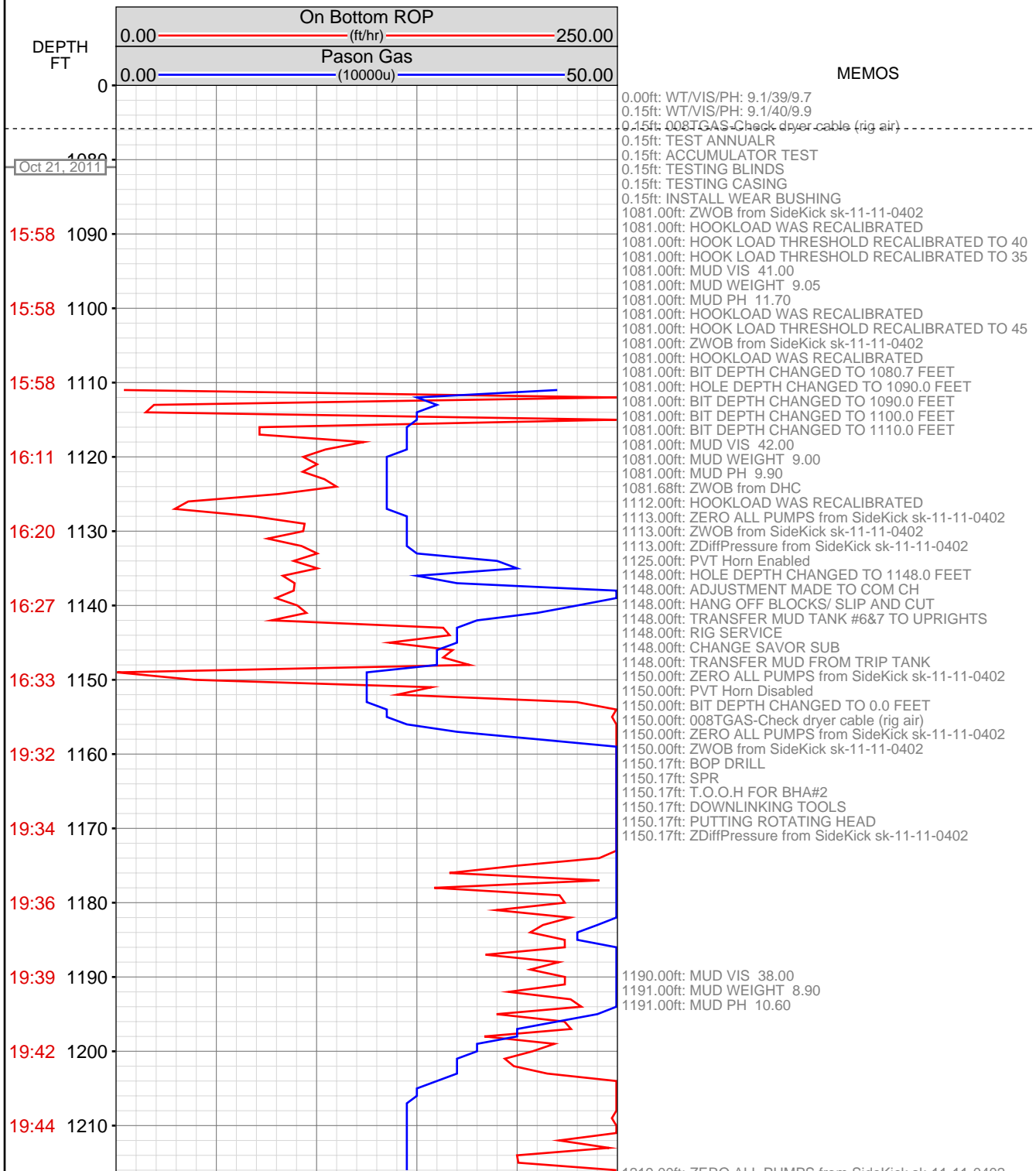
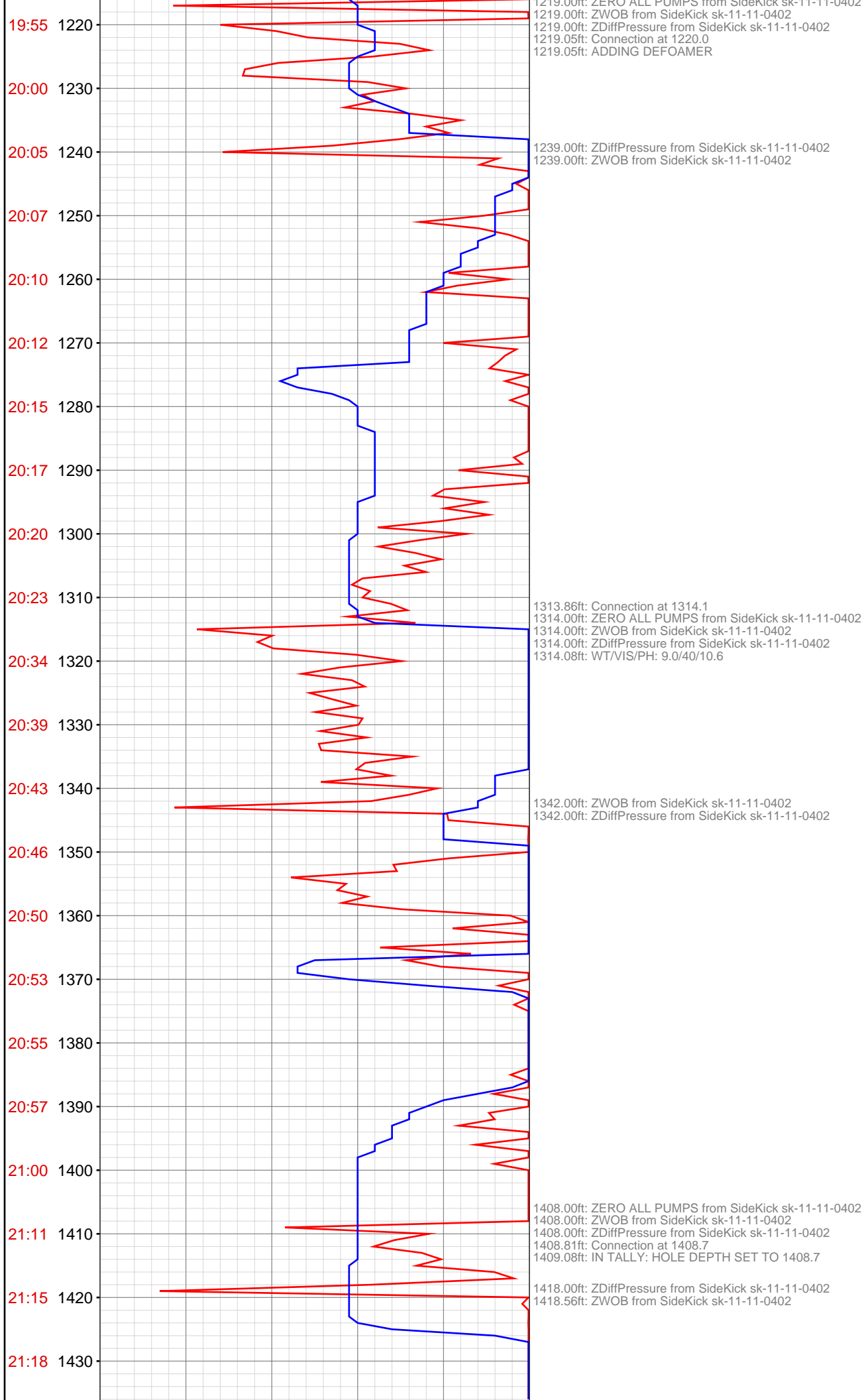
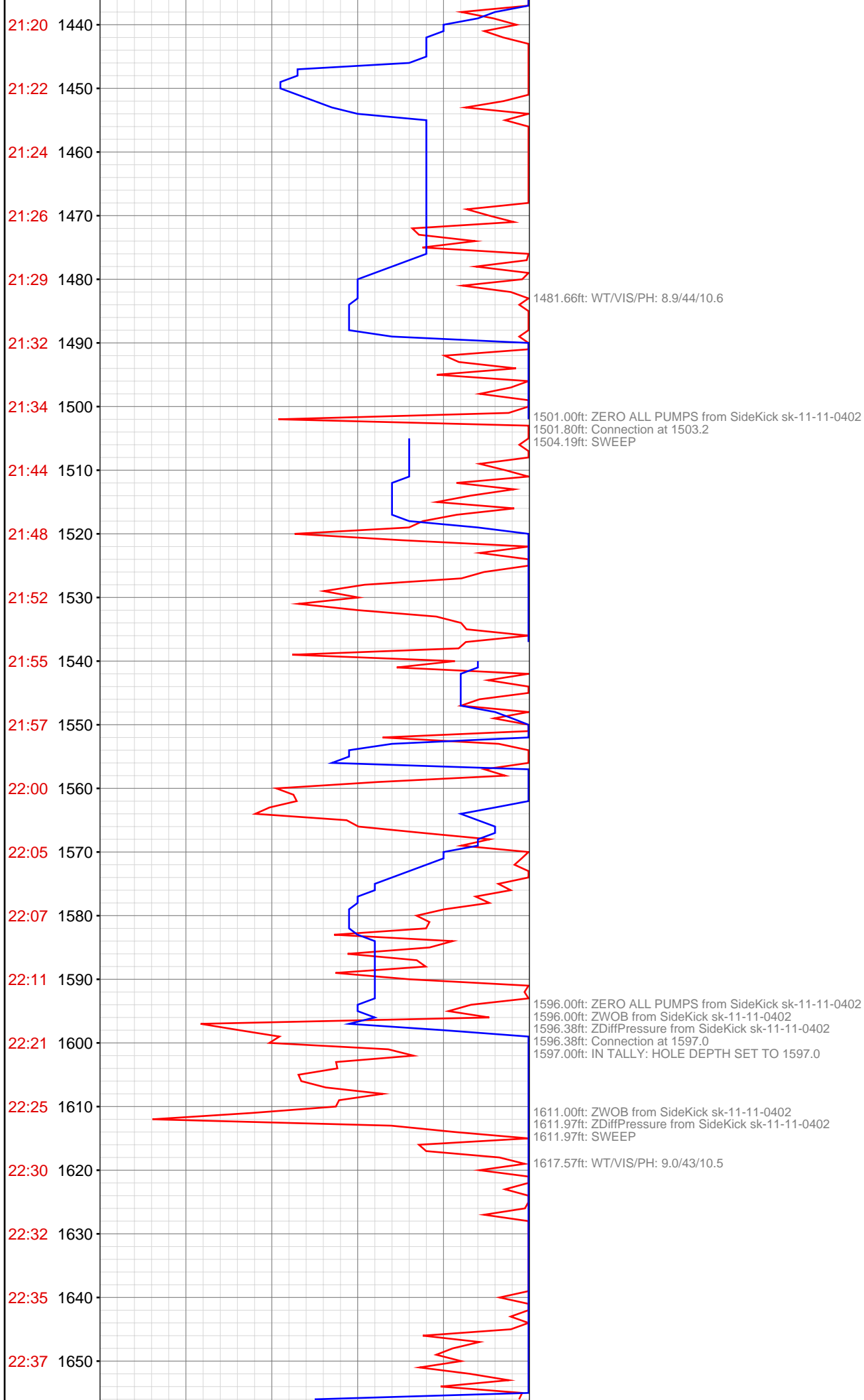


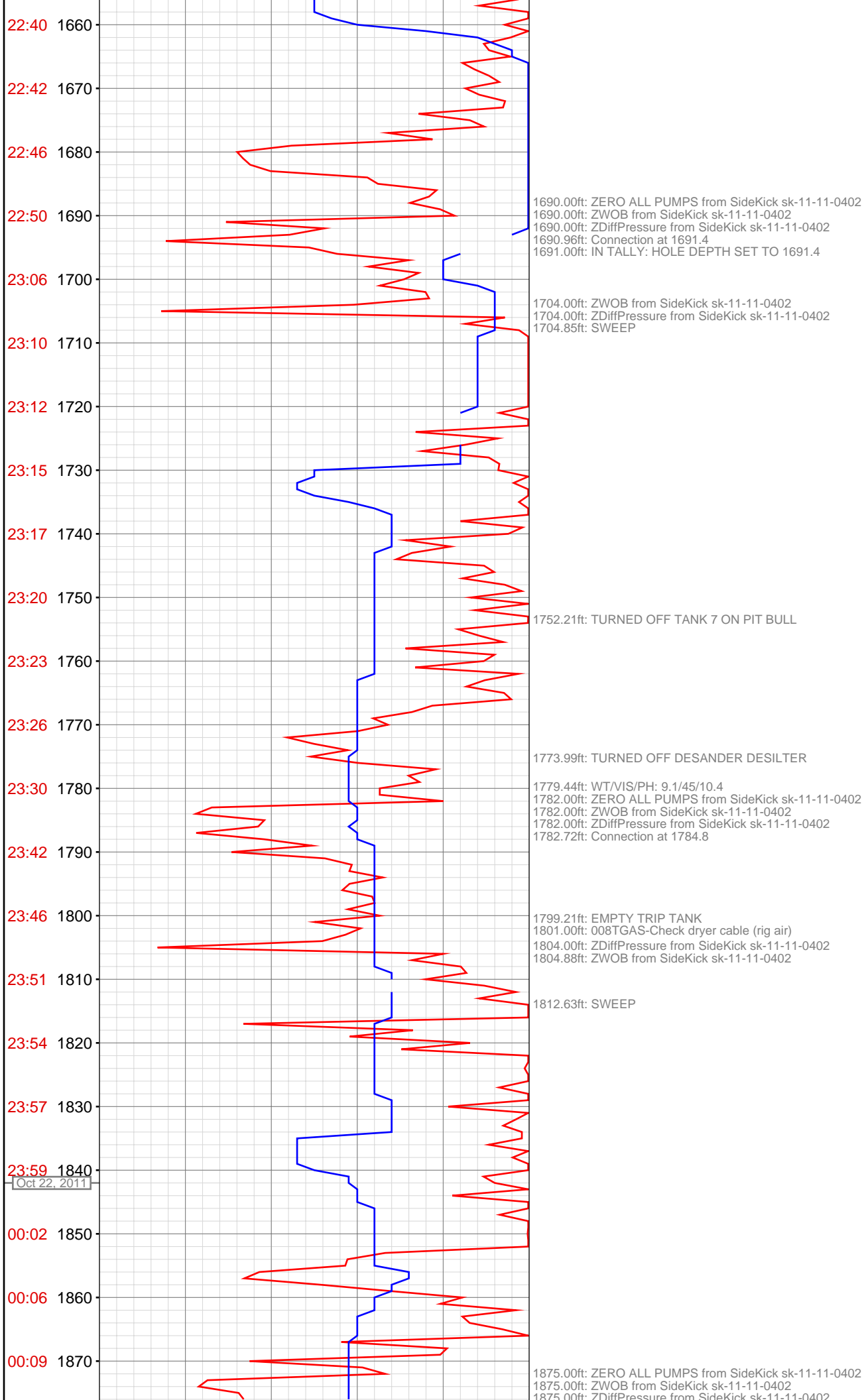
OPERATOR: EnCana Oil & Gas (USA), Inc.
WELL: FEDERAL 25-5A (PE-25 PAD)
FIELD:
LOCATION:
COUNTRY: USA
RIG: Pat-UTI 330

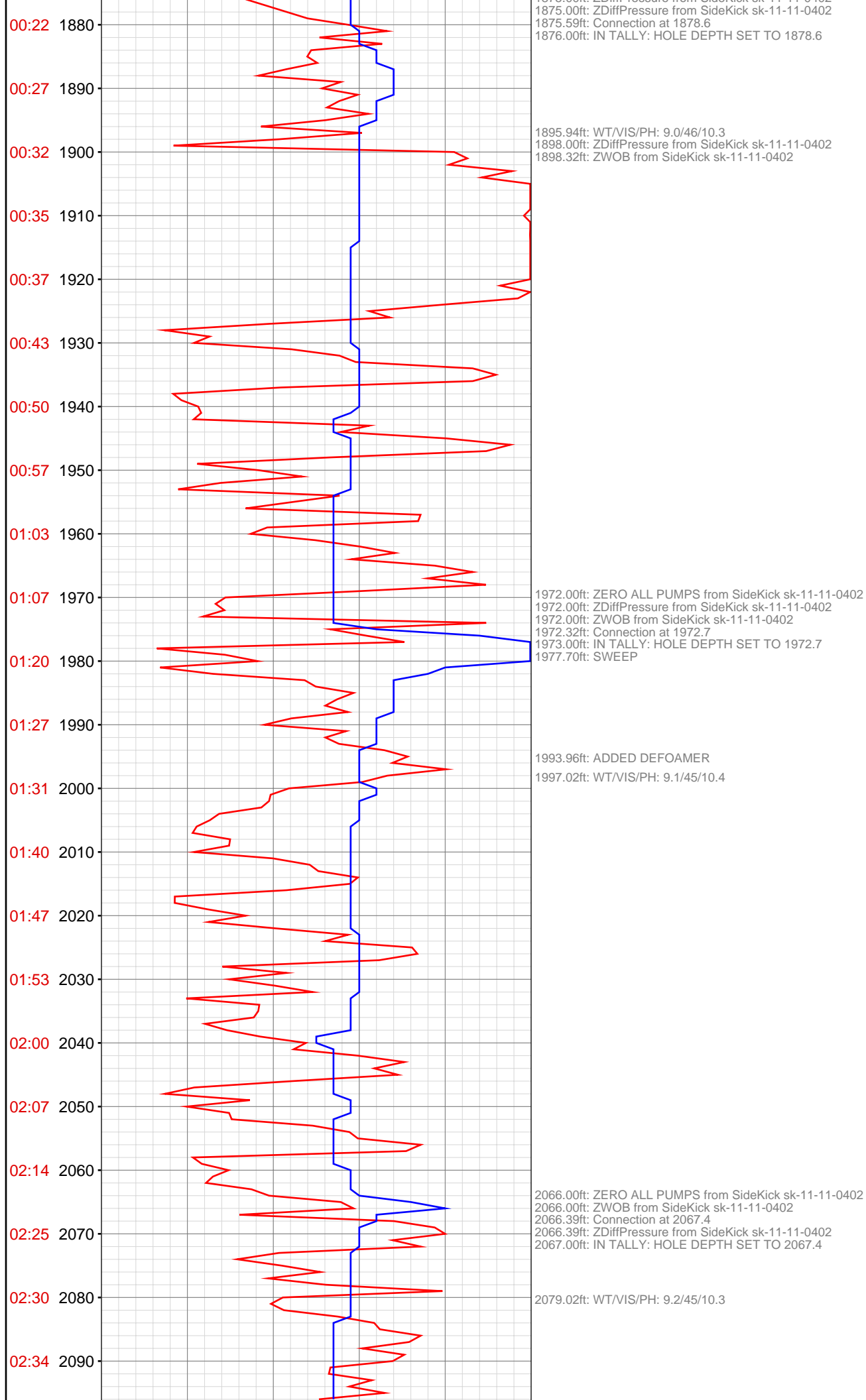
CONTRACTOR: Patterson-UTI Drilling Company
UNIQUE WELL ID: 05-045-20671-00
SPUD DATE: Oct 21, 2011 19:30
RELEASE DATE:

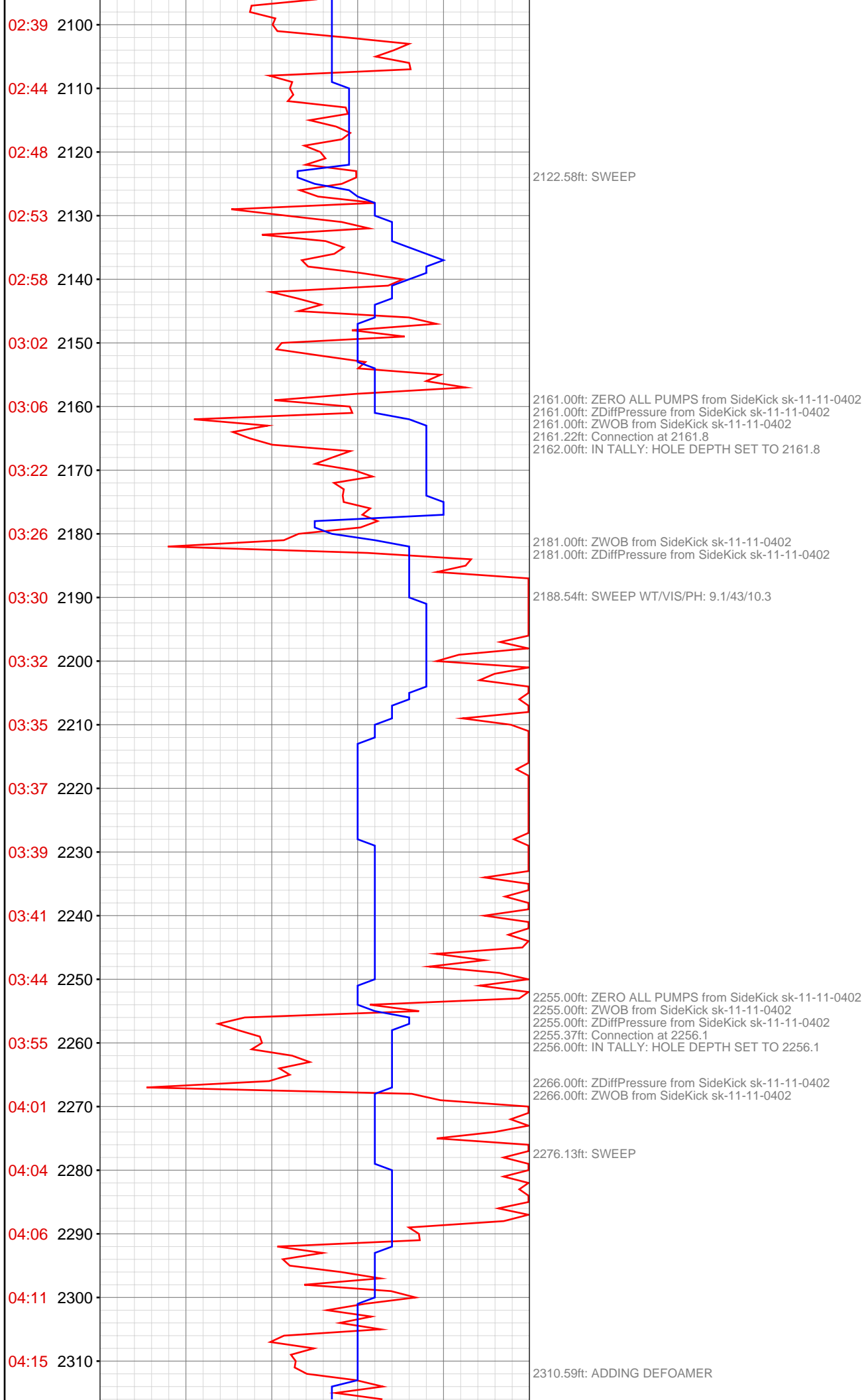


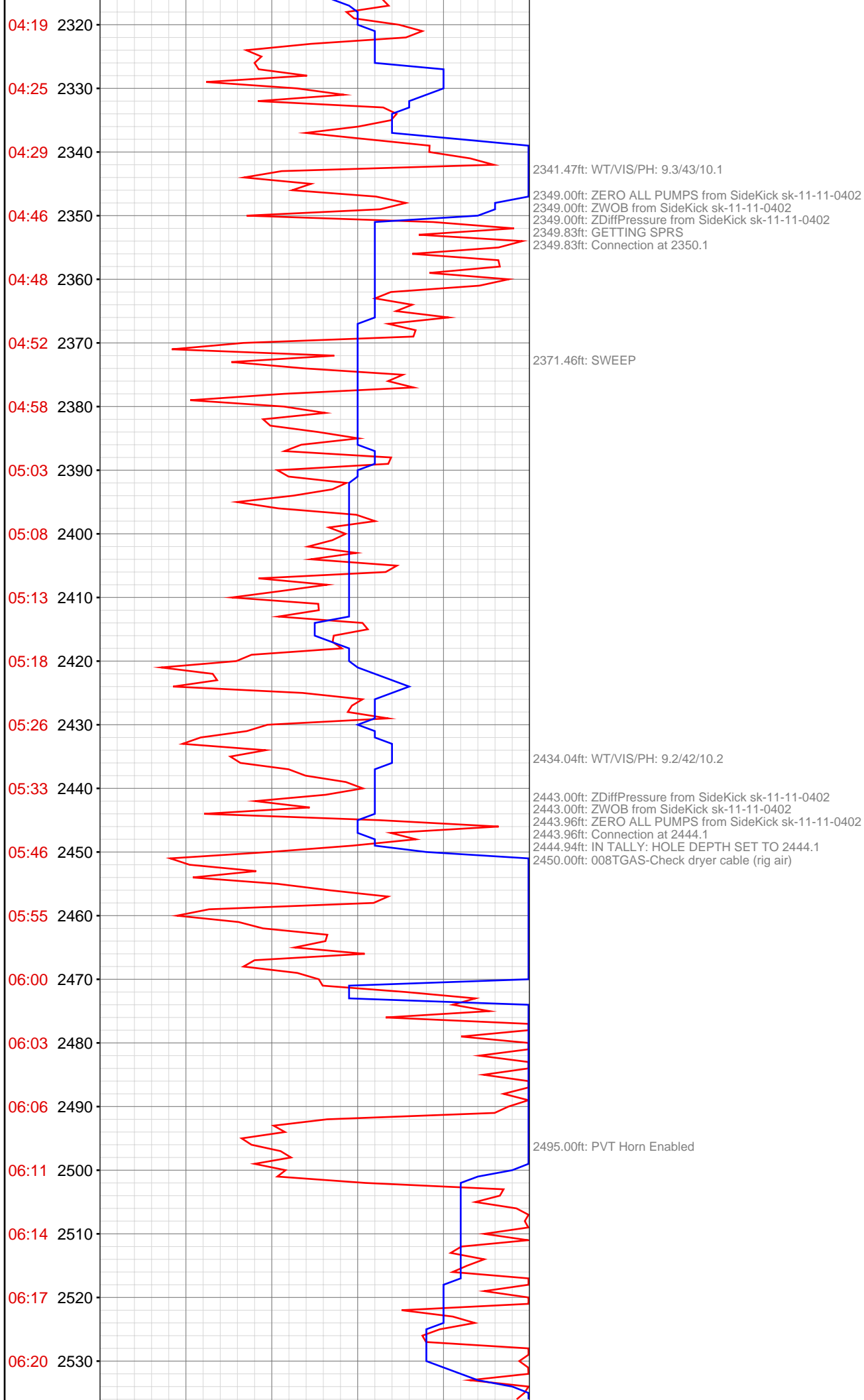


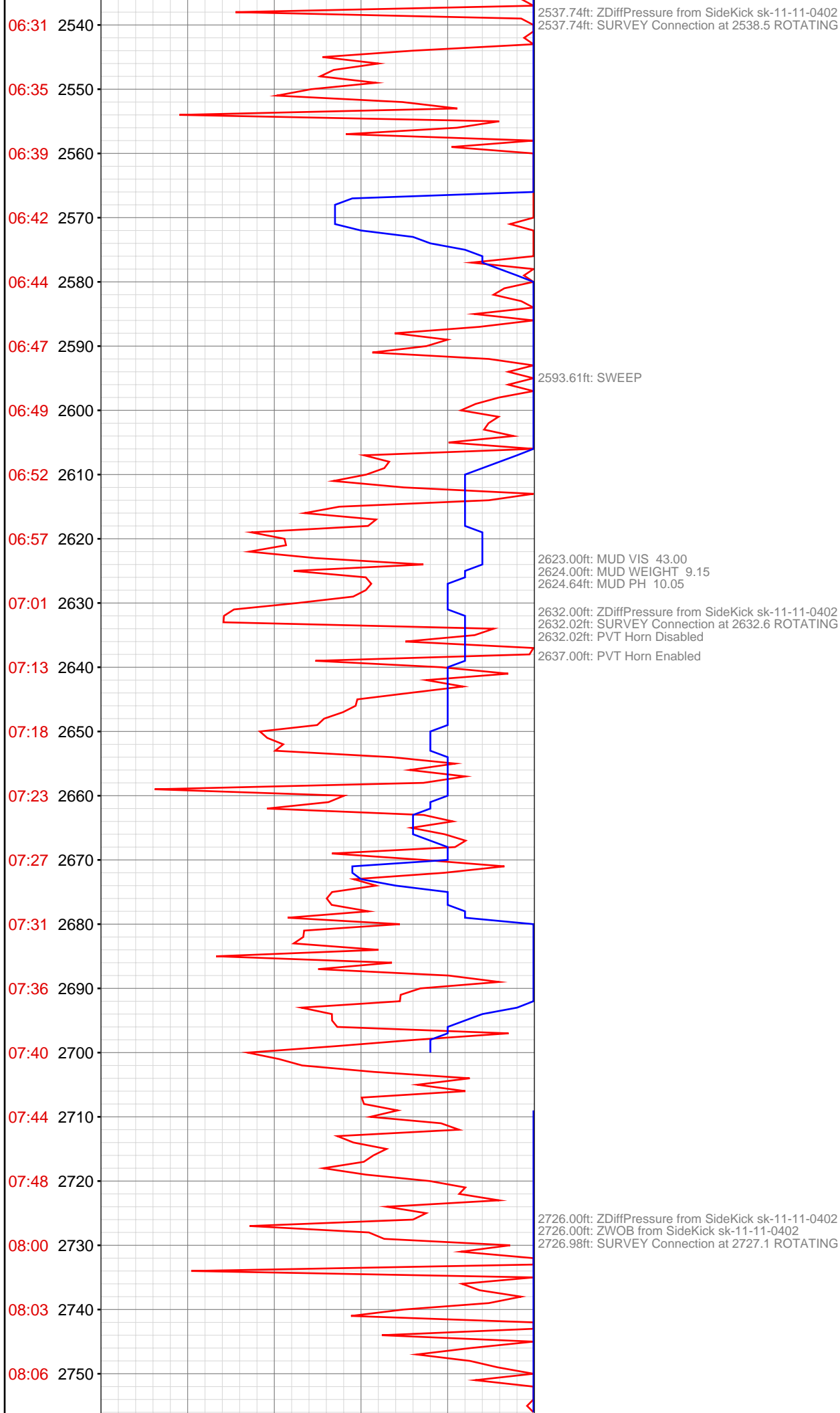


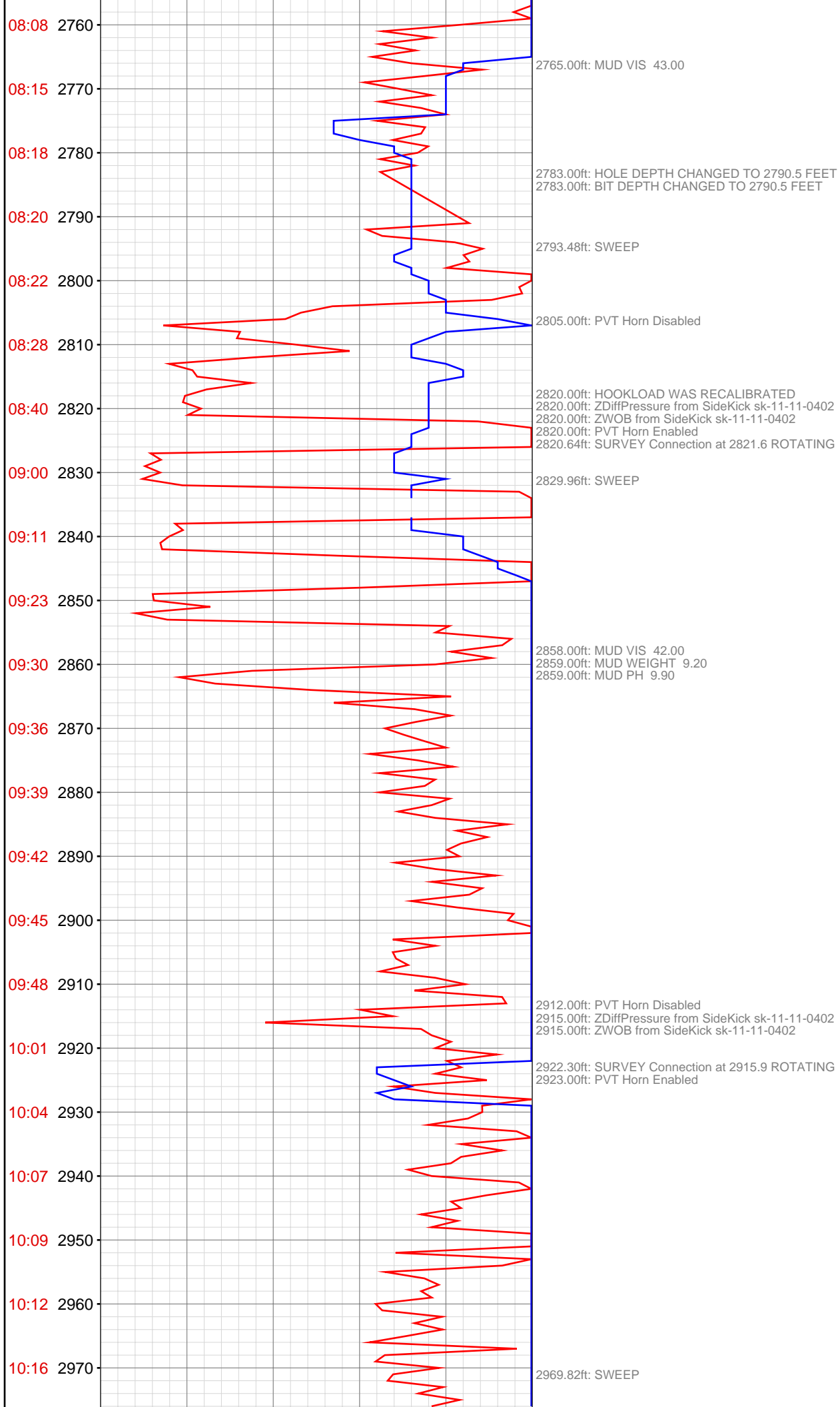


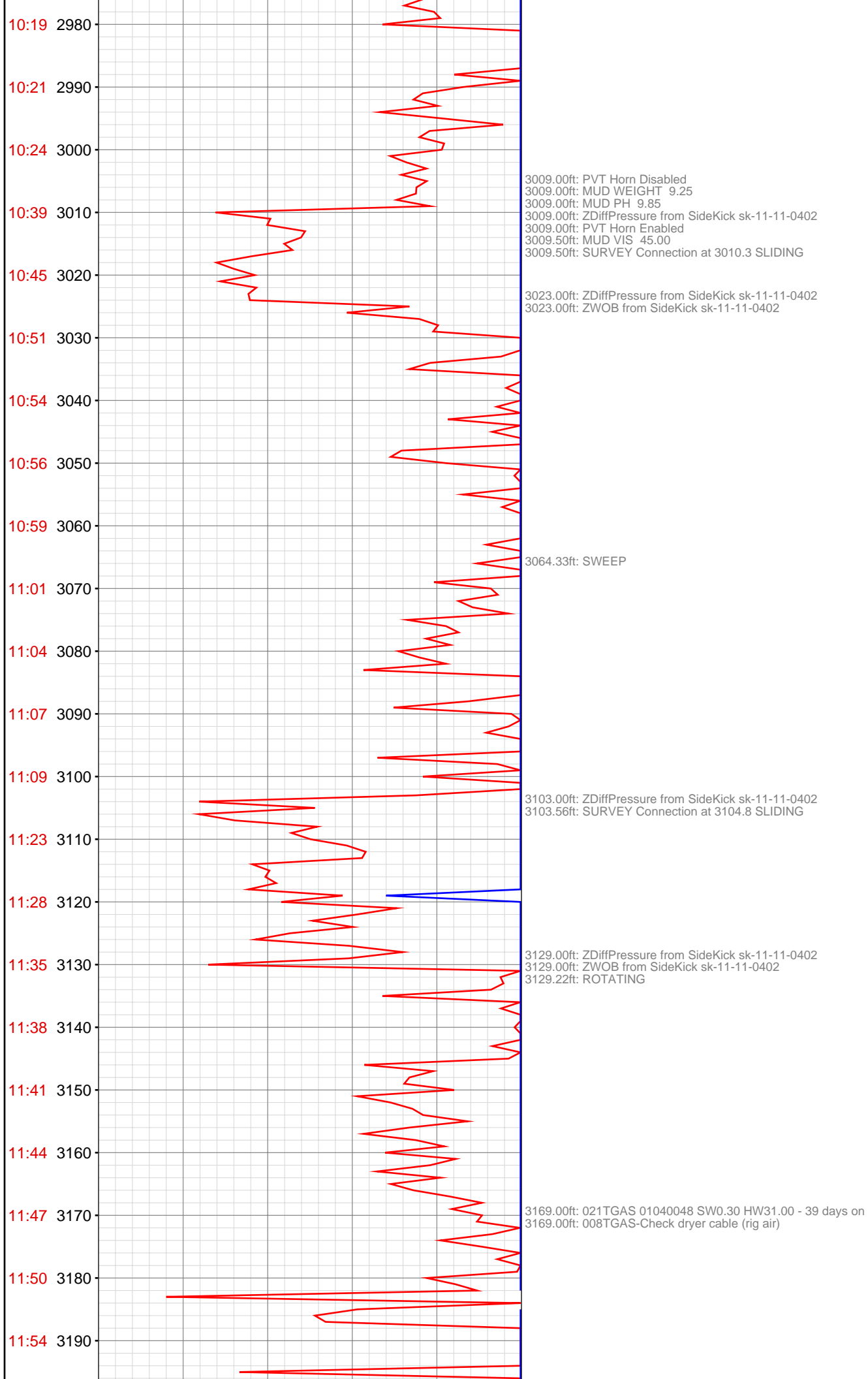


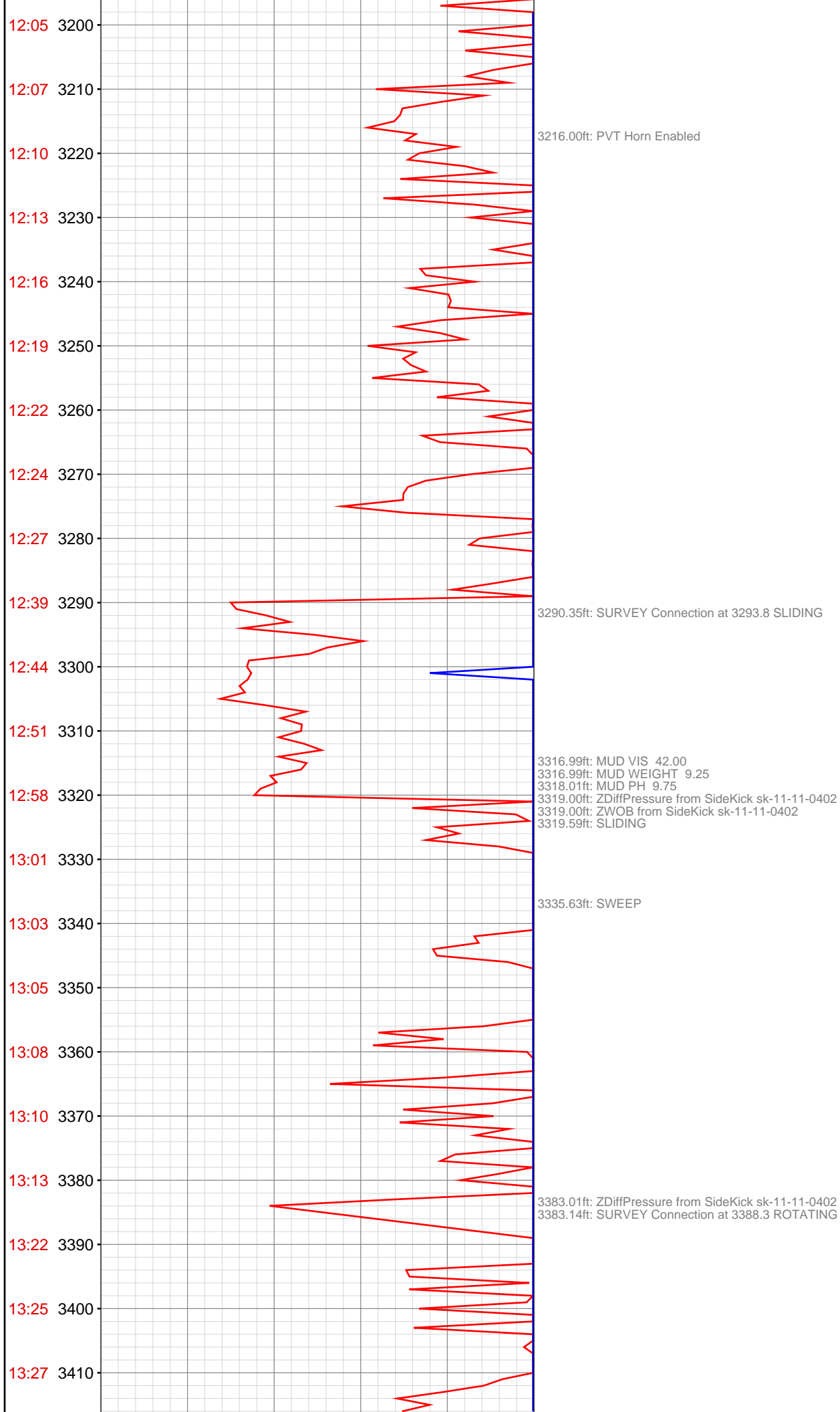


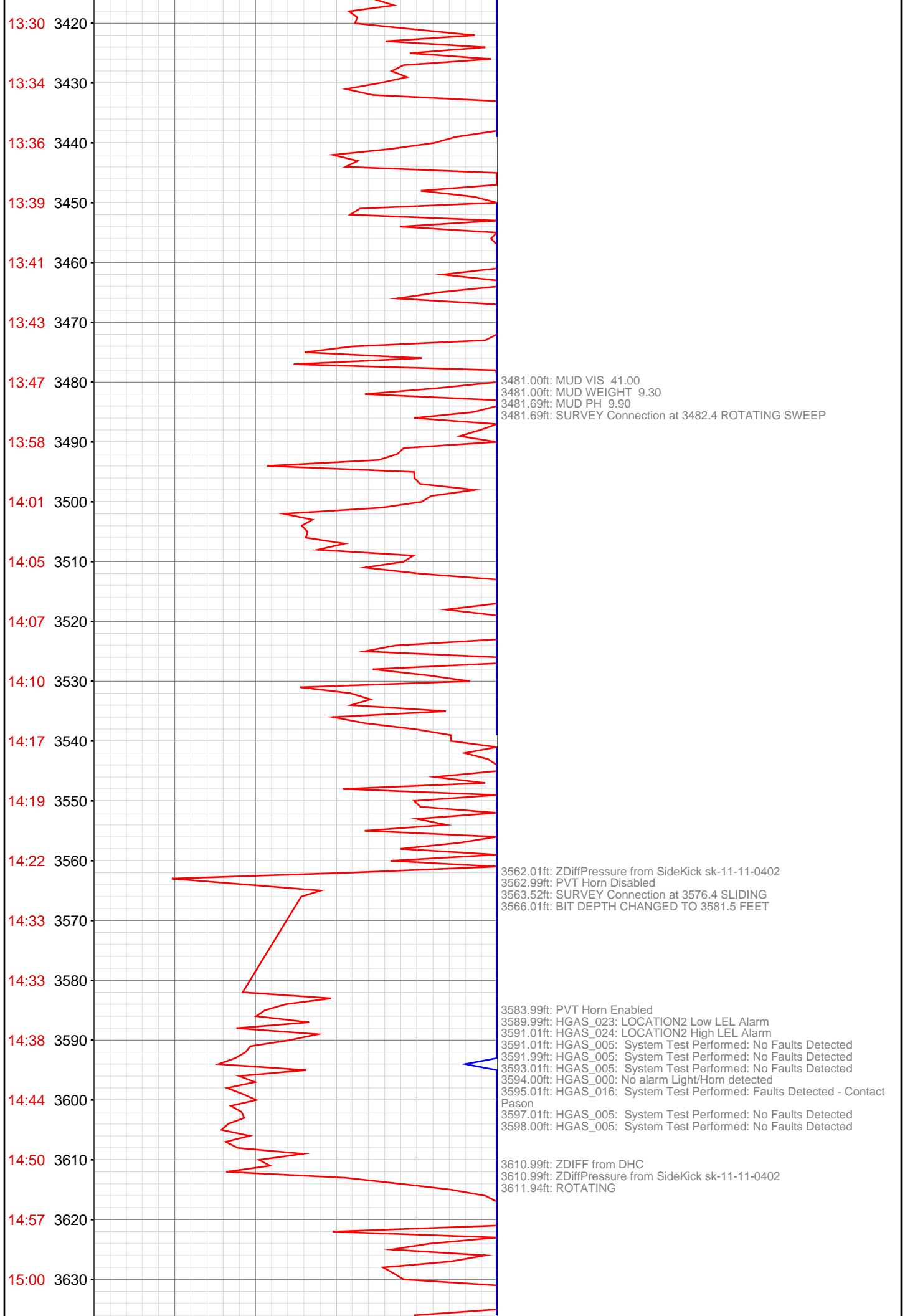


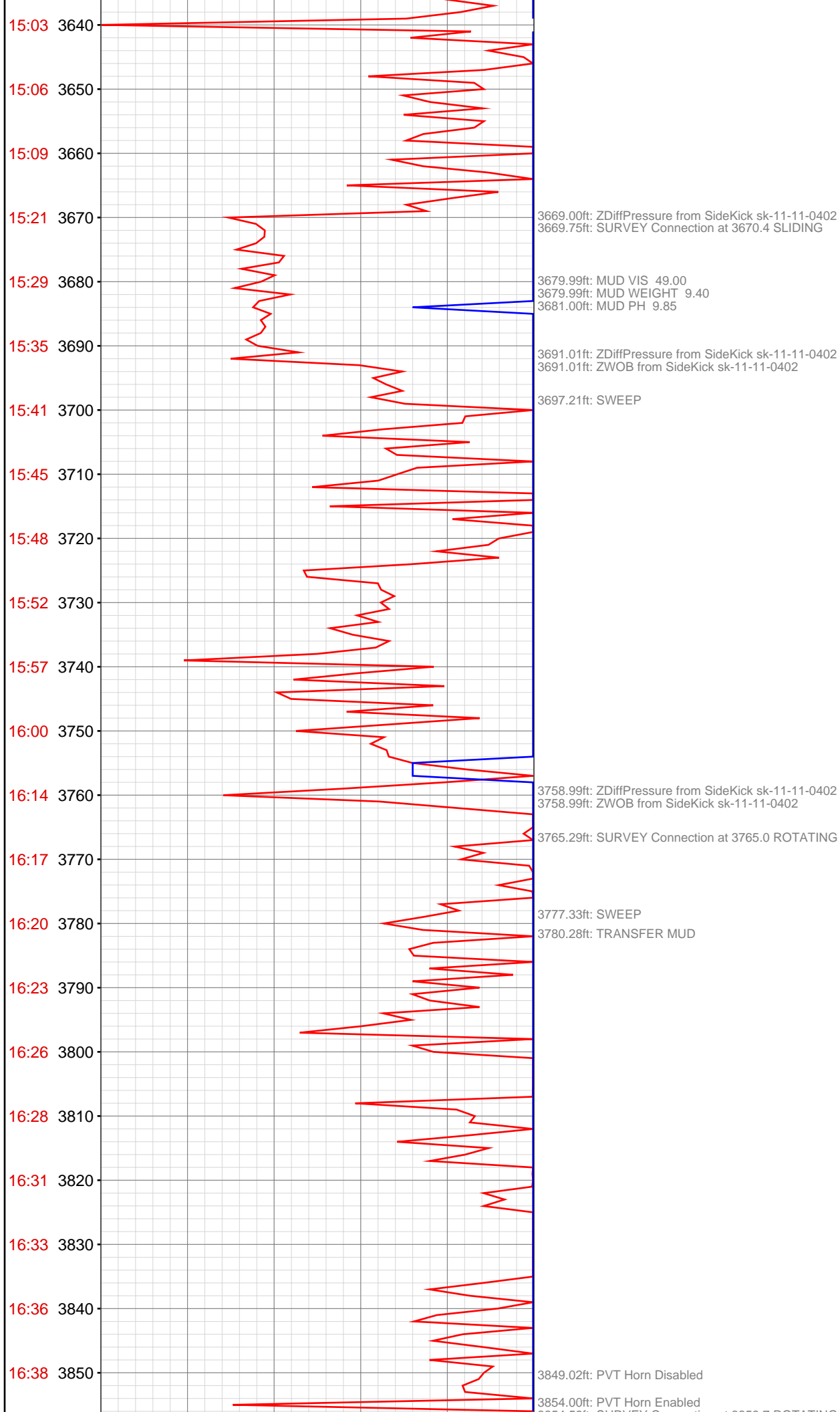












3854.59ft: SURVEY Connection at 3859.7 ROTATING

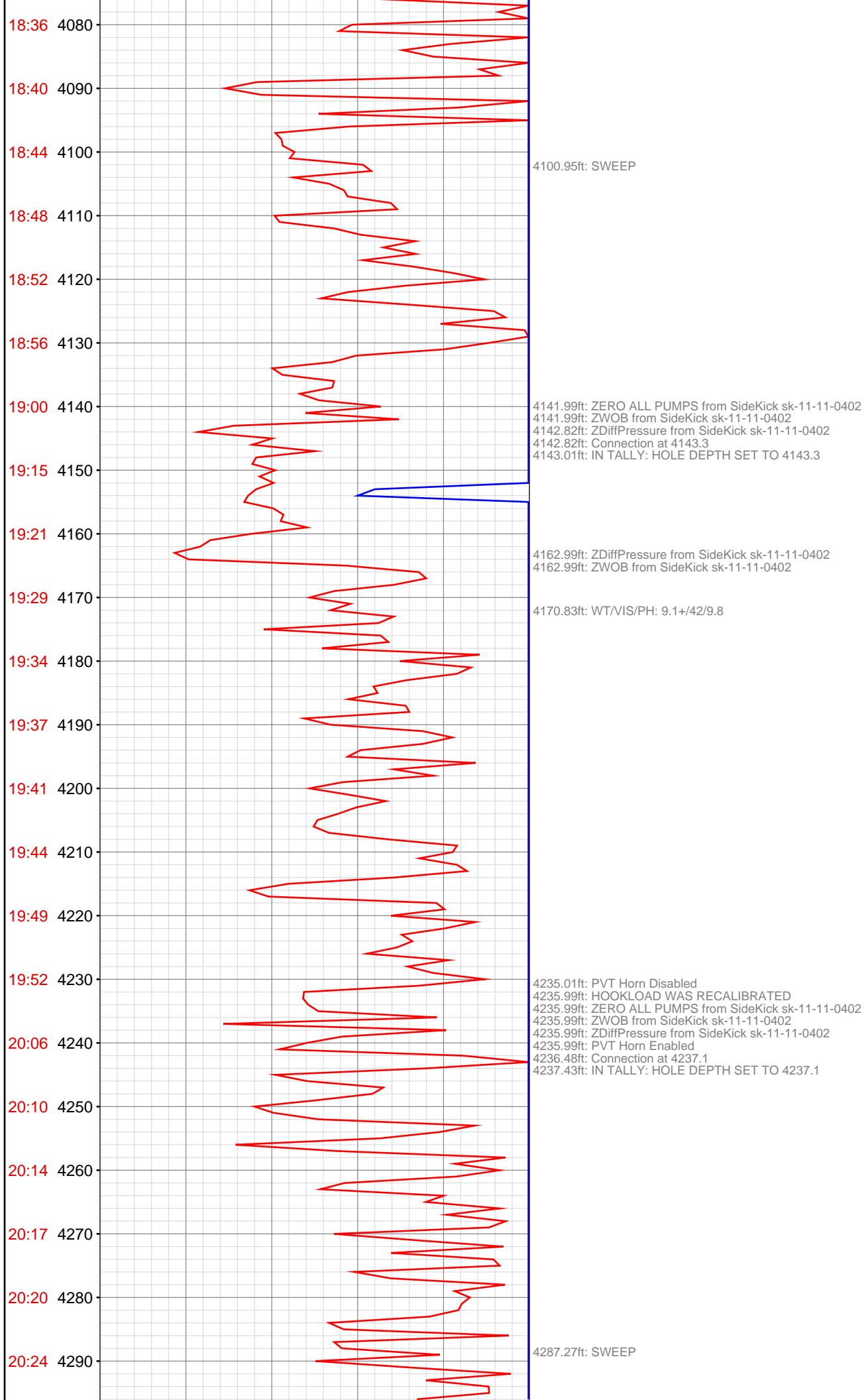
3863.16ft: SWEEP

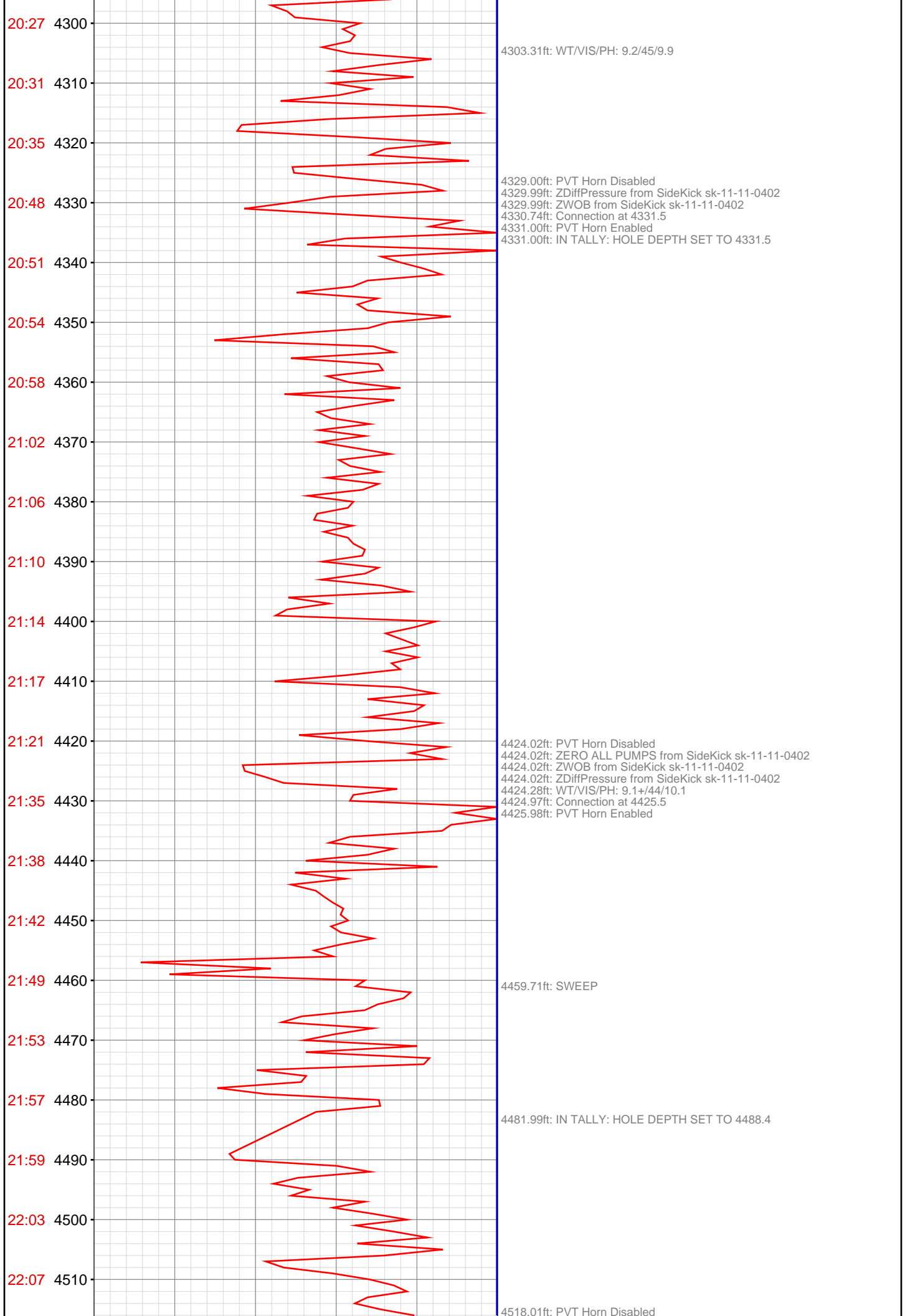
3947.15ft: SPR
3948.79ft: SURVEY Connection at 3954.8 SLIDING

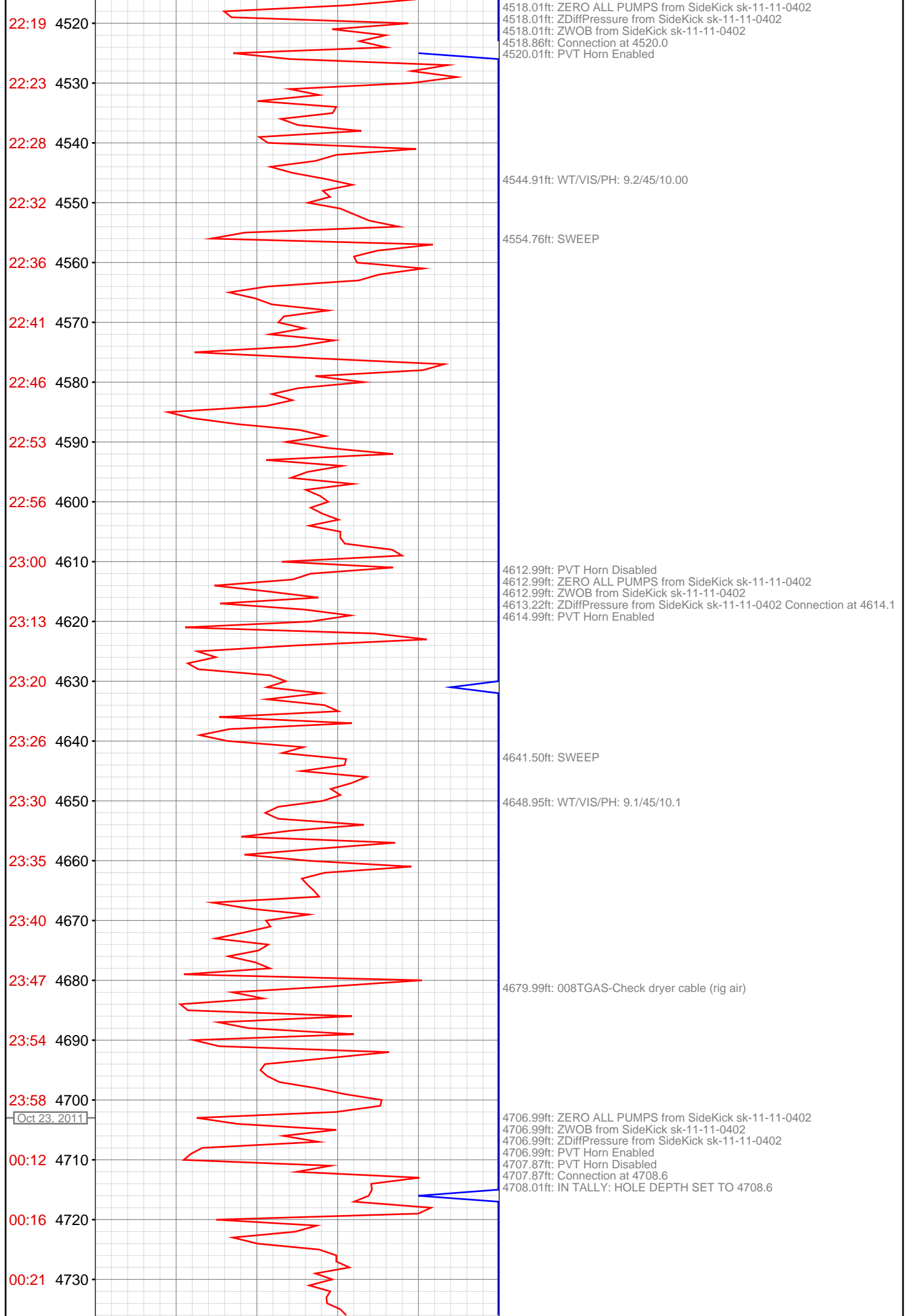
3977.00ft: 008TGAS-Check dryer cable (rig air)

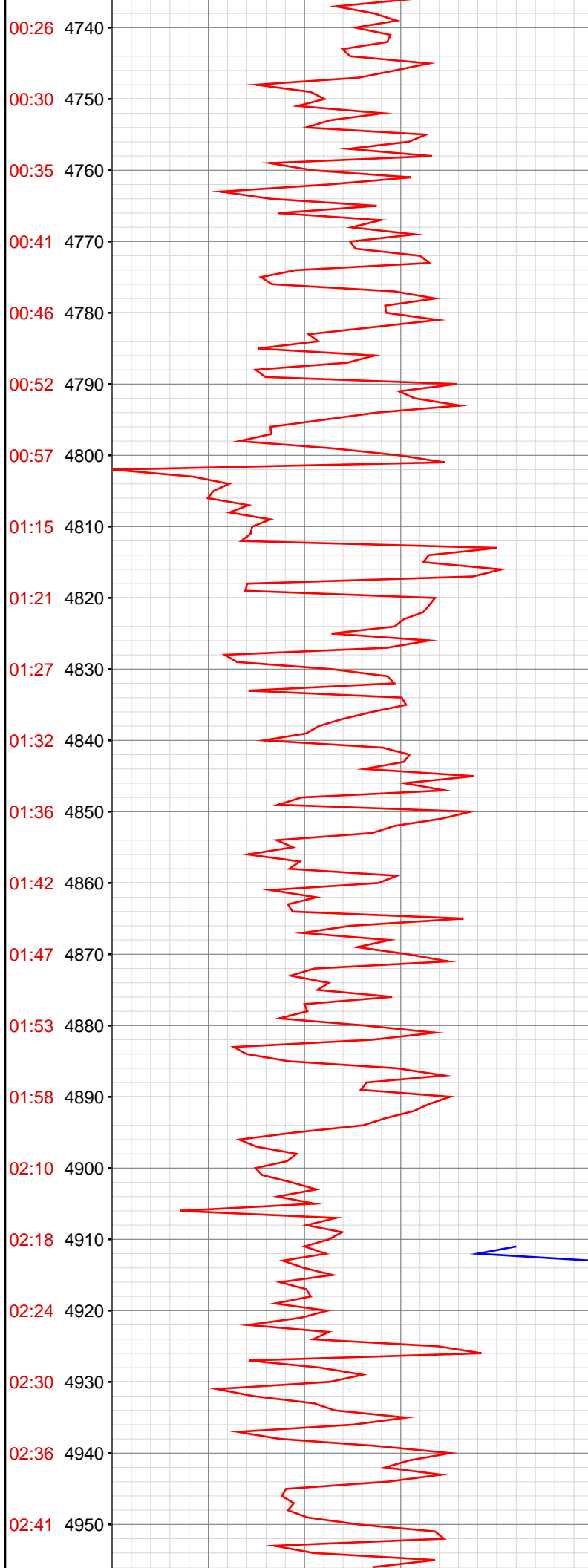
3983.89ft: PUMP CELLAR OUT
3985.01ft: ZDiffPressure from SideKick sk-11-11-0402
3985.37ft: ZWOB from SideKick sk-11-11-0402
3985.37ft: ROTATING

4048.00ft: PVT Horn Disabled
4048.00ft: ZERO ALL PUMPS from SideKick sk-11-11-0402
4048.00ft: ZWOB from SideKick sk-11-11-0402
4048.10ft: WT/VIS/PH: 9.2+/40/9.6
4048.10ft: Connection at 4049.3
4049.02ft: IN TALLY: HOLE DEPTH SET TO 4049.4
4050.10ft: PVT Horn Enabled









4745.14ft: WT/VIS/PH: 9.1/45/10.4

4800.98ft: ZERO ALL PUMPS from SideKick sk-11-11-0402
4800.98ft: PVT Horn Enabled
4802.00ft: PVT Horn Disabled
4802.00ft: SLIDING
4802.00ft: Connection at 4802.4
4802.40ft: IN TALLY: HOLE DEPTH SET TO 4802.4
4810.99ft: ZDiffPressure from SideKick sk-11-11-0402
4810.99ft: ZWOB from SideKick sk-11-11-0402
4811.35ft: SWEEP

4836.42ft: WT/VIS/PH: 9.2/43/10.2

4895.01ft: PVT Horn Disabled
4895.01ft: ZERO ALL PUMPS from SideKick sk-11-11-0402
4895.01ft: ZWOB from SideKick sk-11-11-0402
4895.01ft: ZDiffPressure from SideKick sk-11-11-0402
4895.01ft: PVT Horn Enabled
4895.51ft: Connection at 4896.5
4896.00ft: IN TALLY: HOLE DEPTH SET TO 4896.5

4915.06ft: SWEEP

4930.45ft: WT/VIS/PH: 9.2/44/10.3

