

## WELLBORE DIAGRAM

**Proposed P&A**  
483' FSL & 1792' FWL

Operator:	Koch Exploration Company
Well Name:	WRD Federal Unit 6M
Lease Number:	COC0127535
Location:	SESW Sec. 20-T2N-R96W
Field:	White River Dome
County, State:	Rio Blanco, CO
API Number:	05-103-08247
Diagram Date:	5/10/2012

KB 6021'

GL 6009'

13 3/8" 47# csg (8jts) @ 313'  
cmtd w/ 300sx thixotropic

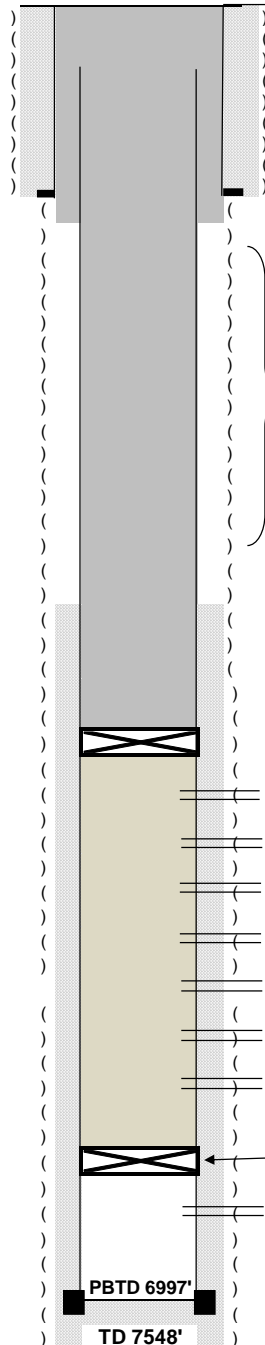
8-5/8" 24# csg set @ 1286'  
cmtd w/ 275 sx Howcolite  
w/ 3% CaCl<sub>2</sub> & 100 sx  
Class G w/ 2% CaCl<sub>2</sub>

5 1/2" TOC @ 6110'

Cameo: 6879'

Rollins: 7089'

5-1/2" 15.5# K55 csg set @ 7268'  
cmtd w/ 190sx 12.5# Halcolite



Bad Casing  
1680-5243"  
hole @ 2074'  
hole @ 2422'  
hole @ 5243'

6170-6178'

6245-6260'

6382-6393' (perfs squeezed 3/20/1979)

6455-6462'

6739-6744'

6744-6758'

6846-6852'

RBP @ 6997'

7092-7104'

PBTD 6997'

TD 7548'

## Proposed Procedure

- 1 MIRU
- 2 Release and POOH w/ 3 1/2" liner
- 3 Set CIBP @ 6120', with 5sks cmt bailed on top
- 4 Spot cmt plugs across bad casing from 5243' up to 1680'
- 5 Perforate @ 1336'. Attempt to circulate cmt
- 6 Spot cmt across 8 5/8" shoe from 1350 up to 1200'
- 7 Cut 5 1/2" csg @ 200' and POOH. Spot 60 sks cement in stub
- 8 Top job cmt at surface as needed
- 9 Cut off WH and install dryhole marker

**Note:** Plugs will be no greater than 700' in height  
Plugs will cover 50' above & below bad casing intervals  
All plugs will be tagged after an appropriate waiting period  
Plugs will be set w/ tbg, unless on a BP, which will be dump bailed