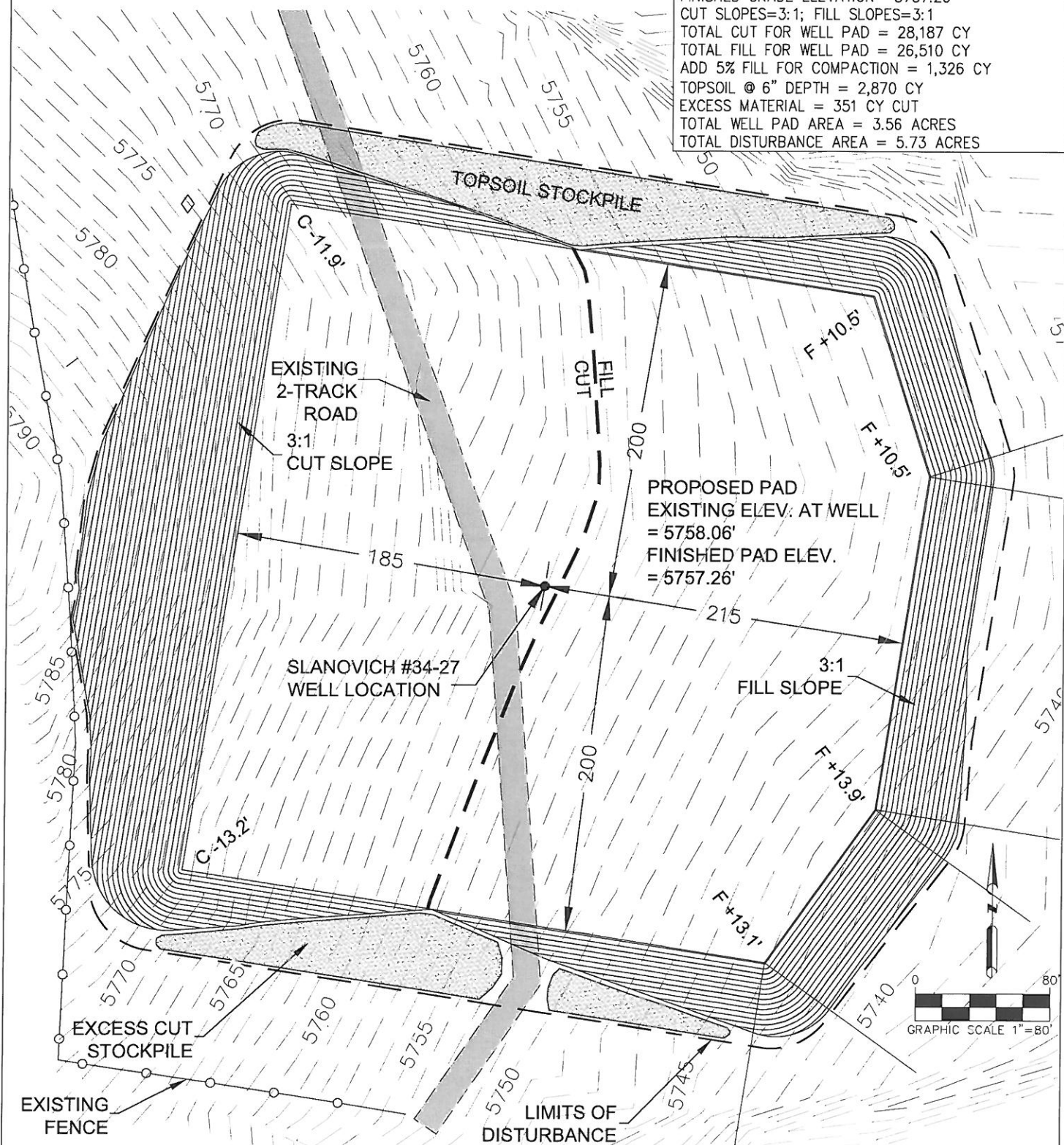


SLANOVICH #34-27 QUANTITIES

EXISTING GRADE @ SURFACE HOLE LOCATION=5758.06
 FINISHED GRADE ELEVATION= 5757.26
 CUT SLOPES=3:1; FILL SLOPES=3:1
 TOTAL CUT FOR WELL PAD = 28,187 CY
 TOTAL FILL FOR WELL PAD = 26,510 CY
 ADD 5% FILL FOR COMPACTION = 1,326 CY
 TOPSOIL @ 6" DEPTH = 2,870 CY
 EXCESS MATERIAL = 351 CY CUT
 TOTAL WELL PAD AREA = 3.56 ACRES
 TOTAL DISTURBANCE AREA = 5.73 ACRES



NOTE: A COMPLETE UTILITIES LOCATION IS RECOMMENDED BEFORE CONSTRUCTION.

PREPARED BY:



FIELD DATE:
 03-02-12

DRAWING DATE:
 05-10-12

BY:
 CLM

WELL NAME:

SLANOVICH #34-27H

SURFACE LOCATION:

NW 1/4, SE 1/4, SEC. 27, T19S, R70W
 FREEMONT COUNTY, COLORADO

PREPARED FOR:

WINN
 EXPLORATION