

ENSIGN

Directional

Well Name: Baldridge 1-1

Surface Location: Baldridge & Schneider Pad Sec.36-T7N-R67W
North American Datum 1983, US State Plane 1983Colorado Northern Zone
Ground Elevation: 4877.0

+N/-S
0.0

+E/-W
0.0

Northing
1434453.18

Easting
3183490.88

Latitude
40.524100

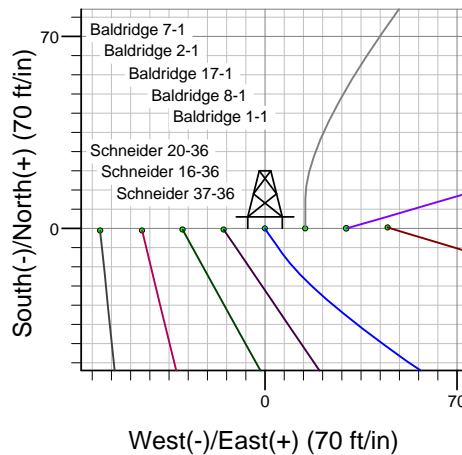
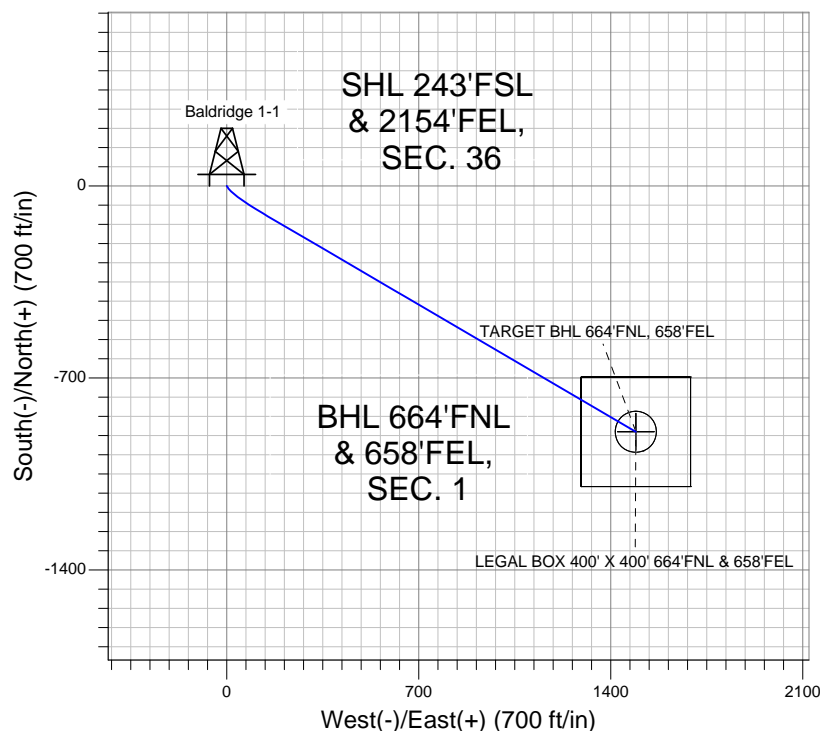
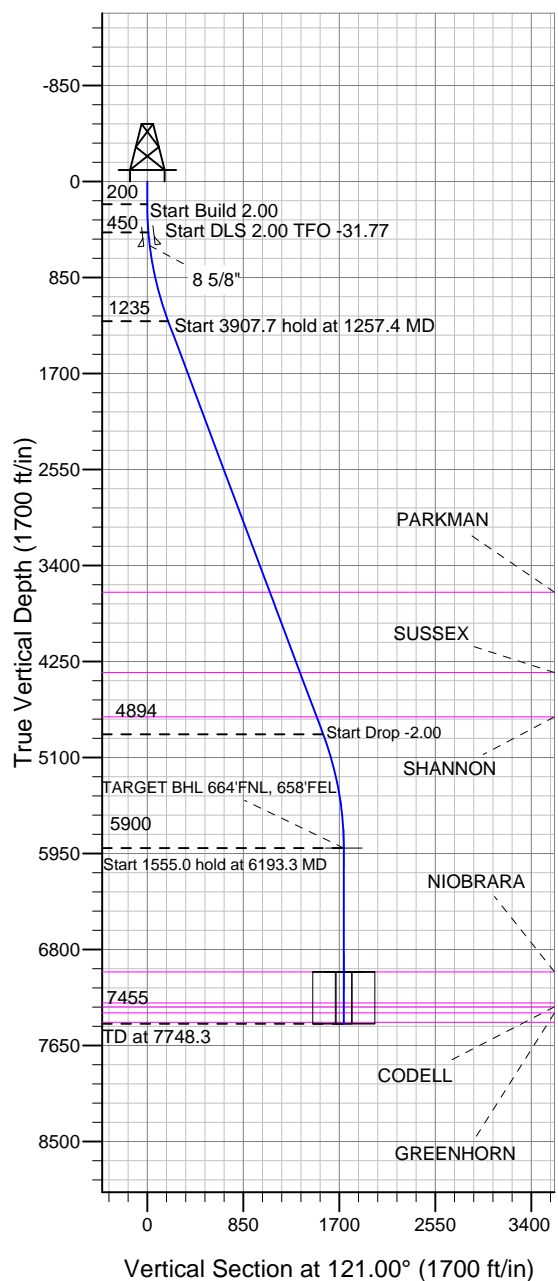
Longitude
-104.839956

Slot

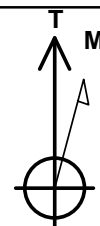
Original Well Elev

WELL @ 4893.0ft (Original Well Elev)

BAYSWATER EXPLORATION & PRODUCTION



Baldridge & Schneider Pad Sec.36-T7N-R67W
Baldridge 1-1
Plan #1 (4-12-12)
14:38, April 16 2012



Azimuths to True North
Magnetic North: 8.80°
Magnetic Field
Strength: 53100.7snT
Dip Angle: 67.11°
Date: 4/12/2012
Model: IGRF2010

WELLBORE TARGET DETAILS (LAT/LONG)

Name	TVD	+N/-S	+E/-W	Latitude	Longitude	Shape
TARGET BHL 664'FNL, 658'FEL	5900.0	-896.2	1491.6	40.521640	-104.834591	Point
LEGAL BOX 400' X 400' 664'FNL & 658'FEL	6996.0	-896.2	1491.6	40.521640	-104.834591	Rectangle (Sides: L400.0 W400.0)
TARGET CIRCLE 664'FNL & 658'FEL	6996.0	-896.2	1491.6	40.521640	-104.834591	Circle (Radius: 75.0)

SECTION DETAILS

Sec	MD	Inc	Azi	TVD	+N/-S	+E/-W	DLeg	TFace	VSec
1	0.0	0.00	0.00	0.0	0.0	0.0	0.00	0.00	0.0
2	200.0	0.00	0.00	200.0	0.0	0.0	0.00	0.00	0.0
3	450.0	5.00	145.00	449.7	-8.9	6.3	2.00	145.00	10.0
4	1257.4	20.56	120.36	1235.1	-110.1	149.7	2.00	-31.77	185.1
5	5165.1	20.56	120.36	4893.7	-803.9	1334.1	0.00	0.00	1557.6
6	6193.3	0.00	0.00	5900.0	-896.2	1491.6	2.00	180.00	1740.1
7	7748.3	0.00	0.00	7455.0	-896.2	1491.6	0.00	0.00	1740.1

TARGET BHL 664'FNL, 658'FEL



BAYSWATER EXPLORATION & PRODUCTION

SEC.36-T7N-R67W

Baldrige & Schneider Pad Sec.36-T7N-R67W

Baldrige 1-1

Wellbore #1

Plan: Plan #1 (4-12-12)

Standard Planning Report

16 April, 2012

Database:	Landmark	Local Co-ordinate Reference:	Well Baldridge 1-1
Company:	BAYSWATER EXPLORATION & PRODUCTION	TVD Reference:	WELL @ 4893.0ft (Original Well Elev)
Project:	SEC.36-T7N-R67W	MD Reference:	WELL @ 4893.0ft (Original Well Elev)
Site:	Baldridge & Schneider Pad Sec.36-T7N-R67W	North Reference:	True
Well:	Baldridge 1-1	Survey Calculation Method:	Minimum Curvature
Wellbore:	Wellbore #1		
Design:	Plan #1 (4-12-12)		

Project	SEC.36-T7N-R67W, Weld County, Colorado		
Map System:	US State Plane 1983	System Datum:	Mean Sea Level
Geo Datum:	North American Datum 1983		Using Well Reference Point
Map Zone:	Colorado Northern Zone		Using geodetic scale factor

Site						Baldridge & Schneider Pad Sec.36-T7N-R67W											
Site Position:						Northing:			1,434,452.01 ft			Latitude:			40.524098		
From:			Lat/Long			Easting:			3,183,430.84 ft			Longitude:			-104.840172		
Position Uncertainty:			0.0 ft			Slot Radius:			"			Grid Convergence:			0.43 °		

Well	Baldridge 1-1					
Well Position	+N/-S	0.7 ft	Northing:	1,434,453.18 ft	Latitude:	40.524100
	+E/-W	60.1 ft	Easting:	3,183,490.88 ft	Longitude:	-104.839956
Position Uncertainty		0.0 ft	Wellhead Elevation:	ft	Ground Level:	4,877.0 ft

Wellbore	Wellbore #1				
Magnetics	Model Name	Sample Date	Declination (°)	Dip Angle (°)	Field Strength (nT)
	IGRF2010	4/12/2012	8.80	67.11	53,101

Design	Plan #1 (4-12-12)			
Audit Notes:				
Version:	Phase:	PROTOTYPE	Tie On Depth:	0.0
Vertical Section:	Depth From (TVD) (ft)	+N/-S (ft)	+E/-W (ft)	Direction (°)
	0.0	0.0	0.0	121.00

Plan Sections										
Measured Depth (ft)	Inclination (°)	Azimuth (°)	Vertical Depth (ft)	+N/-S (ft)	+E/-W (ft)	Dogleg Rate (°/100ft)	Build Rate (°/100ft)	Turn Rate (°/100ft)	TFO (°)	Target
0.0	0.00	0.00	0.0	0.0	0.0	0.00	0.00	0.00	0.00	
200.0	0.00	0.00	200.0	0.0	0.0	0.00	0.00	0.00	0.00	
450.0	5.00	145.00	449.7	-8.9	6.3	2.00	2.00	0.00	145.00	
1,257.4	20.56	120.36	1,235.1	-110.1	149.7	2.00	1.93	-3.05	-31.77	
5,165.1	20.56	120.36	4,893.7	-803.9	1,334.1	0.00	0.00	0.00	0.00	
6,193.3	0.00	0.00	5,900.0	-896.2	1,491.6	2.00	-2.00	0.00	180.00	TARGET BHL 664'I
7,748.3	0.00	0.00	7,455.0	-896.2	1,491.6	0.00	0.00	0.00	0.00	

Database:	Landmark	Local Co-ordinate Reference:	Well Baldrige 1-1
Company:	BAYSWATER EXPLORATION & PRODUCTION	TVD Reference:	WELL @ 4893.0ft (Original Well Elev)
Project:	SEC.36-T7N-R67W	MD Reference:	WELL @ 4893.0ft (Original Well Elev)
Site:	Baldrige & Schneider Pad Sec.36-T7N-R67W	North Reference:	True
Well:	Baldrige 1-1	Survey Calculation Method:	Minimum Curvature
Wellbore:	Wellbore #1		
Design:	Plan #1 (4-12-12)		

Planned Survey									
Measured Depth (ft)	Inclination (°)	Azimuth (°)	Vertical Depth (ft)	+N/-S (ft)	+E/-W (ft)	Vertical Section (ft)	Dogleg Rate (°/100ft)	Build Rate (°/100ft)	Turn Rate (°/100ft)
0.0	0.00	0.00	0.0	0.0	0.0	0.0	0.00	0.00	0.00
40.0	0.00	0.00	40.0	0.0	0.0	0.0	0.00	0.00	0.00
80.0	0.00	0.00	80.0	0.0	0.0	0.0	0.00	0.00	0.00
120.0	0.00	0.00	120.0	0.0	0.0	0.0	0.00	0.00	0.00
160.0	0.00	0.00	160.0	0.0	0.0	0.0	0.00	0.00	0.00
200.0	0.00	0.00	200.0	0.0	0.0	0.0	0.00	0.00	0.00
240.0	0.80	145.00	240.0	-0.2	0.2	0.3	2.00	2.00	0.00
280.0	1.60	145.00	280.0	-0.9	0.6	1.0	2.00	2.00	0.00
320.0	2.40	145.00	320.0	-2.1	1.4	2.3	2.00	2.00	0.00
360.0	3.20	145.00	359.9	-3.7	2.6	4.1	2.00	2.00	0.00
400.0	4.00	145.00	399.8	-5.7	4.0	6.4	2.00	2.00	0.00
440.0	4.80	145.00	439.7	-8.2	5.8	9.2	2.00	2.00	0.00
450.0	5.00	145.00	449.7	-8.9	6.3	10.0	2.00	2.00	0.00
480.0	5.52	141.71	479.6	-11.1	7.9	12.5	2.00	1.73	-10.95
520.0	6.23	138.20	519.3	-14.3	10.5	16.4	2.00	1.79	-8.79
560.0	6.97	135.41	559.1	-17.6	13.7	20.8	2.00	1.83	-6.97
566.0	7.08	135.04	565.0	-18.1	14.2	21.5	2.00	1.85	-6.14
8 5/8"									
600.0	7.71	133.15	598.8	-21.2	17.3	25.8	2.00	1.87	-5.55
640.0	8.47	131.30	638.4	-25.0	21.5	31.3	2.00	1.89	-4.64
680.0	9.23	129.74	677.9	-28.9	26.2	37.4	2.00	1.91	-3.88
720.0	10.00	128.43	717.3	-33.2	31.4	44.0	2.00	1.92	-3.29
760.0	10.78	127.30	756.7	-37.6	37.1	51.1	2.00	1.93	-2.83
800.0	11.55	126.32	795.9	-42.2	43.3	58.9	2.00	1.94	-2.45
840.0	12.33	125.46	835.0	-47.1	50.0	67.1	2.00	1.95	-2.15
880.0	13.12	124.70	874.1	-52.1	57.2	75.9	2.00	1.96	-1.89
920.0	13.90	124.03	912.9	-57.4	64.9	85.2	2.00	1.96	-1.68
960.0	14.69	123.42	951.7	-62.9	73.1	95.1	2.00	1.97	-1.51
1,000.0	15.47	122.88	990.3	-68.6	81.8	105.5	2.00	1.97	-1.36
1,040.0	16.26	122.39	1,028.8	-74.5	91.1	116.4	2.00	1.97	-1.23
1,080.0	17.05	121.94	1,067.1	-80.6	100.8	127.9	2.00	1.97	-1.12
1,120.0	17.84	121.53	1,105.3	-86.9	111.0	139.9	2.00	1.98	-1.02
1,160.0	18.63	121.16	1,143.3	-93.4	121.7	152.4	2.00	1.98	-0.94
1,200.0	19.43	120.81	1,181.1	-100.1	132.8	165.4	2.00	1.98	-0.86
1,240.0	20.22	120.49	1,218.7	-107.0	144.5	179.0	2.00	1.98	-0.80
1,257.4	20.56	120.36	1,235.1	-110.1	149.7	185.1	2.00	1.98	-0.76
1,280.0	20.56	120.36	1,256.2	-114.1	156.6	193.0	0.00	0.00	0.00
1,320.0	20.56	120.36	1,293.6	-121.2	168.7	207.0	0.00	0.00	0.00
1,360.0	20.56	120.36	1,331.1	-128.3	180.8	221.1	0.00	0.00	0.00
1,400.0	20.56	120.36	1,368.5	-135.4	193.0	235.1	0.00	0.00	0.00
1,440.0	20.56	120.36	1,406.0	-142.5	205.1	249.2	0.00	0.00	0.00
1,480.0	20.56	120.36	1,443.4	-149.6	217.2	263.2	0.00	0.00	0.00
1,520.0	20.56	120.36	1,480.9	-156.7	229.3	277.3	0.00	0.00	0.00
1,560.0	20.56	120.36	1,518.3	-163.8	241.4	291.3	0.00	0.00	0.00
1,600.0	20.56	120.36	1,555.8	-170.9	253.6	305.4	0.00	0.00	0.00
1,640.0	20.56	120.36	1,593.3	-178.0	265.7	319.4	0.00	0.00	0.00
1,680.0	20.56	120.36	1,630.7	-185.1	277.8	333.5	0.00	0.00	0.00
1,720.0	20.56	120.36	1,668.2	-192.2	289.9	347.5	0.00	0.00	0.00
1,760.0	20.56	120.36	1,705.6	-199.3	302.1	361.6	0.00	0.00	0.00
1,800.0	20.56	120.36	1,743.1	-206.4	314.2	375.6	0.00	0.00	0.00
1,840.0	20.56	120.36	1,780.5	-213.5	326.3	389.7	0.00	0.00	0.00
1,880.0	20.56	120.36	1,818.0	-220.6	338.4	403.7	0.00	0.00	0.00

Database:	Landmark	Local Co-ordinate Reference:	Well Baldridge 1-1
Company:	BAYSWATER EXPLORATION & PRODUCTION	TVD Reference:	WELL @ 4893.0ft (Original Well Elev)
Project:	SEC.36-T7N-R67W	MD Reference:	WELL @ 4893.0ft (Original Well Elev)
Site:	Baldridge & Schneider Pad Sec.36-T7N-R67W	North Reference:	True
Well:	Baldridge 1-1	Survey Calculation Method:	Minimum Curvature
Wellbore:	Wellbore #1		
Design:	Plan #1 (4-12-12)		

Planned Survey									
Measured Depth (ft)	Inclination (°)	Azimuth (°)	Vertical Depth (ft)	+N/-S (ft)	+E/-W (ft)	Vertical Section (ft)	Dogleg Rate (°/100ft)	Build Rate (°/100ft)	Turn Rate (°/100ft)
1,920.0	20.56	120.36	1,855.4	-227.7	350.6	417.8	0.00	0.00	0.00
1,960.0	20.56	120.36	1,892.9	-234.8	362.7	431.8	0.00	0.00	0.00
2,000.0	20.56	120.36	1,930.3	-241.9	374.8	445.9	0.00	0.00	0.00
2,040.0	20.56	120.36	1,967.8	-249.0	386.9	459.9	0.00	0.00	0.00
2,080.0	20.56	120.36	2,005.2	-256.1	399.0	474.0	0.00	0.00	0.00
2,120.0	20.56	120.36	2,042.7	-263.2	411.2	488.0	0.00	0.00	0.00
2,160.0	20.56	120.36	2,080.1	-270.4	423.3	502.1	0.00	0.00	0.00
2,200.0	20.56	120.36	2,117.6	-277.5	435.4	516.1	0.00	0.00	0.00
2,240.0	20.56	120.36	2,155.0	-284.6	447.5	530.2	0.00	0.00	0.00
2,280.0	20.56	120.36	2,192.5	-291.7	459.7	544.2	0.00	0.00	0.00
2,320.0	20.56	120.36	2,229.9	-298.8	471.8	558.3	0.00	0.00	0.00
2,360.0	20.56	120.36	2,267.4	-305.9	483.9	572.3	0.00	0.00	0.00
2,400.0	20.56	120.36	2,304.8	-313.0	496.0	586.4	0.00	0.00	0.00
2,440.0	20.56	120.36	2,342.3	-320.1	508.2	600.4	0.00	0.00	0.00
2,480.0	20.56	120.36	2,379.7	-327.2	520.3	614.5	0.00	0.00	0.00
2,520.0	20.56	120.36	2,417.2	-334.3	532.4	628.5	0.00	0.00	0.00
2,560.0	20.56	120.36	2,454.6	-341.4	544.5	642.6	0.00	0.00	0.00
2,600.0	20.56	120.36	2,492.1	-348.5	556.6	656.6	0.00	0.00	0.00
2,640.0	20.56	120.36	2,529.5	-355.6	568.8	670.7	0.00	0.00	0.00
2,680.0	20.56	120.36	2,567.0	-362.7	580.9	684.7	0.00	0.00	0.00
2,720.0	20.56	120.36	2,604.4	-369.8	593.0	698.8	0.00	0.00	0.00
2,760.0	20.56	120.36	2,641.9	-376.9	605.1	712.8	0.00	0.00	0.00
2,800.0	20.56	120.36	2,679.3	-384.0	617.3	726.9	0.00	0.00	0.00
2,840.0	20.56	120.36	2,716.8	-391.1	629.4	740.9	0.00	0.00	0.00
2,880.0	20.56	120.36	2,754.2	-398.2	641.5	755.0	0.00	0.00	0.00
2,920.0	20.56	120.36	2,791.7	-405.3	653.6	769.0	0.00	0.00	0.00
2,960.0	20.56	120.36	2,829.1	-412.4	665.8	783.1	0.00	0.00	0.00
3,000.0	20.56	120.36	2,866.6	-419.5	677.9	797.1	0.00	0.00	0.00
3,040.0	20.56	120.36	2,904.0	-426.6	690.0	811.2	0.00	0.00	0.00
3,080.0	20.56	120.36	2,941.5	-433.7	702.1	825.2	0.00	0.00	0.00
3,120.0	20.56	120.36	2,978.9	-440.8	714.2	839.3	0.00	0.00	0.00
3,160.0	20.56	120.36	3,016.4	-447.9	726.4	853.3	0.00	0.00	0.00
3,200.0	20.56	120.36	3,053.8	-455.0	738.5	867.4	0.00	0.00	0.00
3,240.0	20.56	120.36	3,091.3	-462.1	750.6	881.4	0.00	0.00	0.00
3,280.0	20.56	120.36	3,128.7	-469.2	762.7	895.5	0.00	0.00	0.00
3,320.0	20.56	120.36	3,166.2	-476.3	774.9	909.5	0.00	0.00	0.00
3,360.0	20.56	120.36	3,203.7	-483.4	787.0	923.6	0.00	0.00	0.00
3,400.0	20.56	120.36	3,241.1	-490.5	799.1	937.6	0.00	0.00	0.00
3,440.0	20.56	120.36	3,278.6	-497.6	811.2	951.7	0.00	0.00	0.00
3,480.0	20.56	120.36	3,316.0	-504.7	823.4	965.7	0.00	0.00	0.00
3,520.0	20.56	120.36	3,353.5	-511.8	835.5	979.7	0.00	0.00	0.00
3,560.0	20.56	120.36	3,390.9	-518.9	847.6	993.8	0.00	0.00	0.00
3,600.0	20.56	120.36	3,428.4	-526.0	859.7	1,007.8	0.00	0.00	0.00
3,640.0	20.56	120.36	3,465.8	-533.1	871.8	1,021.9	0.00	0.00	0.00
3,680.0	20.56	120.36	3,503.3	-540.2	884.0	1,035.9	0.00	0.00	0.00
3,720.0	20.56	120.36	3,540.7	-547.3	896.1	1,050.0	0.00	0.00	0.00
3,760.0	20.56	120.36	3,578.2	-554.4	908.2	1,064.0	0.00	0.00	0.00
3,800.0	20.56	120.36	3,615.6	-561.5	920.3	1,078.1	0.00	0.00	0.00
3,821.8	20.56	120.36	3,636.0	-565.4	926.9	1,085.7	0.00	0.00	0.00
PARKMAN									
3,840.0	20.56	120.36	3,653.1	-568.6	932.5	1,092.1	0.00	0.00	0.00
3,880.0	20.56	120.36	3,690.5	-575.7	944.6	1,106.2	0.00	0.00	0.00

Database:	Landmark	Local Co-ordinate Reference:	Well Baldridge 1-1
Company:	BAYSWATER EXPLORATION & PRODUCTION	TVD Reference:	WELL @ 4893.0ft (Original Well Elev)
Project:	SEC.36-T7N-R67W	MD Reference:	WELL @ 4893.0ft (Original Well Elev)
Site:	Baldridge & Schneider Pad Sec.36-T7N-R67W	North Reference:	True
Well:	Baldridge 1-1	Survey Calculation Method:	Minimum Curvature
Wellbore:	Wellbore #1		
Design:	Plan #1 (4-12-12)		

Planned Survey									
Measured Depth (ft)	Inclination (°)	Azimuth (°)	Vertical Depth (ft)	+N/-S (ft)	+E/-W (ft)	Vertical Section (ft)	Dogleg Rate (°/100ft)	Build Rate (°/100ft)	Turn Rate (°/100ft)
3,920.0	20.56	120.36	3,728.0	-582.8	956.7	1,120.2	0.00	0.00	0.00
3,960.0	20.56	120.36	3,765.4	-589.9	968.8	1,134.3	0.00	0.00	0.00
4,000.0	20.56	120.36	3,802.9	-597.0	981.0	1,148.3	0.00	0.00	0.00
4,040.0	20.56	120.36	3,840.3	-604.1	993.1	1,162.4	0.00	0.00	0.00
4,080.0	20.56	120.36	3,877.8	-611.2	1,005.2	1,176.4	0.00	0.00	0.00
4,120.0	20.56	120.36	3,915.2	-618.3	1,017.3	1,190.5	0.00	0.00	0.00
4,160.0	20.56	120.36	3,952.7	-625.4	1,029.4	1,204.5	0.00	0.00	0.00
4,200.0	20.56	120.36	3,990.1	-632.5	1,041.6	1,218.6	0.00	0.00	0.00
4,240.0	20.56	120.36	4,027.6	-639.7	1,053.7	1,232.6	0.00	0.00	0.00
4,280.0	20.56	120.36	4,065.0	-646.8	1,065.8	1,246.7	0.00	0.00	0.00
4,320.0	20.56	120.36	4,102.5	-653.9	1,077.9	1,260.7	0.00	0.00	0.00
4,360.0	20.56	120.36	4,139.9	-661.0	1,090.1	1,274.8	0.00	0.00	0.00
4,400.0	20.56	120.36	4,177.4	-668.1	1,102.2	1,288.8	0.00	0.00	0.00
4,440.0	20.56	120.36	4,214.8	-675.2	1,114.3	1,302.9	0.00	0.00	0.00
4,480.0	20.56	120.36	4,252.3	-682.3	1,126.4	1,316.9	0.00	0.00	0.00
4,520.0	20.56	120.36	4,289.7	-689.4	1,138.6	1,331.0	0.00	0.00	0.00
4,560.0	20.56	120.36	4,327.2	-696.5	1,150.7	1,345.0	0.00	0.00	0.00
4,580.1	20.56	120.36	4,346.0	-700.0	1,156.8	1,352.1	0.00	0.00	0.00
SUSSEX									
4,600.0	20.56	120.36	4,364.6	-703.6	1,162.8	1,359.1	0.00	0.00	0.00
4,640.0	20.56	120.36	4,402.1	-710.7	1,174.9	1,373.1	0.00	0.00	0.00
4,680.0	20.56	120.36	4,439.5	-717.8	1,187.0	1,387.2	0.00	0.00	0.00
4,720.0	20.56	120.36	4,477.0	-724.9	1,199.2	1,401.2	0.00	0.00	0.00
4,760.0	20.56	120.36	4,514.4	-732.0	1,211.3	1,415.3	0.00	0.00	0.00
4,800.0	20.56	120.36	4,551.9	-739.1	1,223.4	1,429.3	0.00	0.00	0.00
4,840.0	20.56	120.36	4,589.3	-746.2	1,235.5	1,443.4	0.00	0.00	0.00
4,880.0	20.56	120.36	4,626.8	-753.3	1,247.7	1,457.4	0.00	0.00	0.00
4,920.0	20.56	120.36	4,664.2	-760.4	1,259.8	1,471.5	0.00	0.00	0.00
4,960.0	20.56	120.36	4,701.7	-767.5	1,271.9	1,485.5	0.00	0.00	0.00
4,999.8	20.56	120.36	4,739.0	-774.6	1,284.0	1,499.5	0.00	0.00	0.00
SHANNON									
5,000.0	20.56	120.36	4,739.2	-774.6	1,284.0	1,499.6	0.00	0.00	0.00
5,040.0	20.56	120.36	4,776.6	-781.7	1,296.2	1,513.6	0.00	0.00	0.00
5,080.0	20.56	120.36	4,814.1	-788.8	1,308.3	1,527.7	0.00	0.00	0.00
5,120.0	20.56	120.36	4,851.5	-795.9	1,320.4	1,541.7	0.00	0.00	0.00
5,160.0	20.56	120.36	4,889.0	-803.0	1,332.5	1,555.8	0.00	0.00	0.00
5,165.1	20.56	120.36	4,893.7	-803.9	1,334.1	1,557.6	0.00	0.00	0.00
5,200.0	19.87	120.36	4,926.5	-810.0	1,344.5	1,569.6	2.00	-2.00	0.00
5,240.0	19.07	120.36	4,964.2	-816.7	1,356.0	1,582.9	2.00	-2.00	0.00
5,280.0	18.27	120.36	5,002.1	-823.2	1,367.0	1,595.7	2.00	-2.00	0.00
5,320.0	17.47	120.36	5,040.2	-829.4	1,377.6	1,608.0	2.00	-2.00	0.00
5,360.0	16.67	120.36	5,078.4	-835.3	1,387.7	1,619.8	2.00	-2.00	0.00
5,400.0	15.87	120.36	5,116.8	-841.0	1,397.4	1,631.0	2.00	-2.00	0.00
5,440.0	15.07	120.36	5,155.3	-846.4	1,406.6	1,641.6	2.00	-2.00	0.00
5,480.0	14.27	120.36	5,194.0	-851.5	1,415.4	1,651.8	2.00	-2.00	0.00
5,520.0	13.47	120.36	5,232.9	-856.4	1,423.6	1,661.3	2.00	-2.00	0.00
5,560.0	12.67	120.36	5,271.8	-860.9	1,431.4	1,670.4	2.00	-2.00	0.00
5,600.0	11.87	120.36	5,310.9	-865.2	1,438.8	1,678.9	2.00	-2.00	0.00
5,640.0	11.07	120.36	5,350.1	-869.2	1,445.6	1,686.8	2.00	-2.00	0.00
5,680.0	10.27	120.36	5,389.4	-873.0	1,452.0	1,694.2	2.00	-2.00	0.00
5,720.0	9.47	120.36	5,428.8	-876.5	1,457.9	1,701.1	2.00	-2.00	0.00
5,760.0	8.67	120.36	5,468.3	-879.6	1,463.4	1,707.4	2.00	-2.00	0.00

Database:	Landmark	Local Co-ordinate Reference:	Well Baldridge 1-1
Company:	BAYSWATER EXPLORATION & PRODUCTION	TVD Reference:	WELL @ 4893.0ft (Original Well Elev)
Project:	SEC.36-T7N-R67W	MD Reference:	WELL @ 4893.0ft (Original Well Elev)
Site:	Baldridge & Schneider Pad Sec.36-T7N-R67W	North Reference:	True
Well:	Baldridge 1-1	Survey Calculation Method:	Minimum Curvature
Wellbore:	Wellbore #1		
Design:	Plan #1 (4-12-12)		

Planned Survey									
Measured Depth (ft)	Inclination (°)	Azimuth (°)	Vertical Depth (ft)	+N/-S (ft)	+E/-W (ft)	Vertical Section (ft)	Dogleg Rate (°/100ft)	Build Rate (°/100ft)	Turn Rate (°/100ft)
5,800.0	7.87	120.36	5,507.9	-882.5	1,468.3	1,713.1	2.00	-2.00	0.00
5,840.0	7.07	120.36	5,547.6	-885.2	1,472.8	1,718.3	2.00	-2.00	0.00
5,880.0	6.27	120.36	5,587.3	-887.5	1,476.8	1,723.0	2.00	-2.00	0.00
5,920.0	5.47	120.36	5,627.1	-889.6	1,480.3	1,727.1	2.00	-2.00	0.00
5,960.0	4.67	120.36	5,667.0	-891.4	1,483.4	1,730.6	2.00	-2.00	0.00
6,000.0	3.87	120.36	5,706.8	-892.9	1,486.0	1,733.6	2.00	-2.00	0.00
6,040.0	3.07	120.36	5,746.8	-894.1	1,488.0	1,736.0	2.00	-2.00	0.00
6,080.0	2.27	120.36	5,786.7	-895.0	1,489.6	1,737.9	2.00	-2.00	0.00
6,120.0	1.47	120.36	5,826.7	-895.7	1,490.8	1,739.2	2.00	-2.00	0.00
6,160.0	0.67	120.36	5,866.7	-896.1	1,491.4	1,739.9	2.00	-2.00	0.00
6,193.3	0.00	0.00	5,900.0	-896.2	1,491.6	1,740.1	2.00	-2.00	0.00
TARGET BHL 664'FNL, 658'FEL									
6,200.0	0.00	0.00	5,906.7	-896.2	1,491.6	1,740.1	0.00	0.00	0.00
6,240.0	0.00	0.00	5,946.7	-896.2	1,491.6	1,740.1	0.00	0.00	0.00
6,280.0	0.00	0.00	5,986.7	-896.2	1,491.6	1,740.1	0.00	0.00	0.00
6,320.0	0.00	0.00	6,026.7	-896.2	1,491.6	1,740.1	0.00	0.00	0.00
6,360.0	0.00	0.00	6,066.7	-896.2	1,491.6	1,740.1	0.00	0.00	0.00
6,400.0	0.00	0.00	6,106.7	-896.2	1,491.6	1,740.1	0.00	0.00	0.00
6,440.0	0.00	0.00	6,146.7	-896.2	1,491.6	1,740.1	0.00	0.00	0.00
6,480.0	0.00	0.00	6,186.7	-896.2	1,491.6	1,740.1	0.00	0.00	0.00
6,520.0	0.00	0.00	6,226.7	-896.2	1,491.6	1,740.1	0.00	0.00	0.00
6,560.0	0.00	0.00	6,266.7	-896.2	1,491.6	1,740.1	0.00	0.00	0.00
6,600.0	0.00	0.00	6,306.7	-896.2	1,491.6	1,740.1	0.00	0.00	0.00
6,640.0	0.00	0.00	6,346.7	-896.2	1,491.6	1,740.1	0.00	0.00	0.00
6,680.0	0.00	0.00	6,386.7	-896.2	1,491.6	1,740.1	0.00	0.00	0.00
6,720.0	0.00	0.00	6,426.7	-896.2	1,491.6	1,740.1	0.00	0.00	0.00
6,760.0	0.00	0.00	6,466.7	-896.2	1,491.6	1,740.1	0.00	0.00	0.00
6,800.0	0.00	0.00	6,506.7	-896.2	1,491.6	1,740.1	0.00	0.00	0.00
6,840.0	0.00	0.00	6,546.7	-896.2	1,491.6	1,740.1	0.00	0.00	0.00
6,880.0	0.00	0.00	6,586.7	-896.2	1,491.6	1,740.1	0.00	0.00	0.00
6,920.0	0.00	0.00	6,626.7	-896.2	1,491.6	1,740.1	0.00	0.00	0.00
6,960.0	0.00	0.00	6,666.7	-896.2	1,491.6	1,740.1	0.00	0.00	0.00
7,000.0	0.00	0.00	6,706.7	-896.2	1,491.6	1,740.1	0.00	0.00	0.00
7,040.0	0.00	0.00	6,746.7	-896.2	1,491.6	1,740.1	0.00	0.00	0.00
7,080.0	0.00	0.00	6,786.7	-896.2	1,491.6	1,740.1	0.00	0.00	0.00
7,120.0	0.00	0.00	6,826.7	-896.2	1,491.6	1,740.1	0.00	0.00	0.00
7,160.0	0.00	0.00	6,866.7	-896.2	1,491.6	1,740.1	0.00	0.00	0.00
7,200.0	0.00	0.00	6,906.7	-896.2	1,491.6	1,740.1	0.00	0.00	0.00
7,240.0	0.00	0.00	6,946.7	-896.2	1,491.6	1,740.1	0.00	0.00	0.00
7,280.0	0.00	0.00	6,986.7	-896.2	1,491.6	1,740.1	0.00	0.00	0.00
7,289.3	0.00	0.00	6,996.0	-896.2	1,491.6	1,740.1	0.00	0.00	0.00
NIOBRARA - LEGAL BOX 400' X 400' 664'FNL & 658'FEL - TARGET CIRCLE 664'FNL & 658'FEL									
7,320.0	0.00	0.00	7,026.7	-896.2	1,491.6	1,740.1	0.00	0.00	0.00
7,360.0	0.00	0.00	7,066.7	-896.2	1,491.6	1,740.1	0.00	0.00	0.00
7,400.0	0.00	0.00	7,106.7	-896.2	1,491.6	1,740.1	0.00	0.00	0.00
7,440.0	0.00	0.00	7,146.7	-896.2	1,491.6	1,740.1	0.00	0.00	0.00
7,480.0	0.00	0.00	7,186.7	-896.2	1,491.6	1,740.1	0.00	0.00	0.00
7,520.0	0.00	0.00	7,226.7	-896.2	1,491.6	1,740.1	0.00	0.00	0.00
7,560.0	0.00	0.00	7,266.7	-896.2	1,491.6	1,740.1	0.00	0.00	0.00
7,565.3	0.00	0.00	7,272.0	-896.2	1,491.6	1,740.1	0.00	0.00	0.00
FT. HAYS									
7,600.0	0.00	0.00	7,306.7	-896.2	1,491.6	1,740.1	0.00	0.00	0.00

Database:	Landmark	Local Co-ordinate Reference:	Well Baldrige 1-1
Company:	BAYSWATER EXPLORATION & PRODUCTION	TVD Reference:	WELL @ 4893.0ft (Original Well Elev)
Project:	SEC.36-T7N-R67W	MD Reference:	WELL @ 4893.0ft (Original Well Elev)
Site:	Baldrige & Schneider Pad Sec.36-T7N-R67W	North Reference:	True
Well:	Baldrige 1-1	Survey Calculation Method:	Minimum Curvature
Wellbore:	Wellbore #1		
Design:	Plan #1 (4-12-12)		

Planned Survey										
Measured Depth (ft)	Inclination (°)	Azimuth (°)	Vertical Depth (ft)	+N/-S (ft)	+E/-W (ft)	Vertical Section (ft)	Dogleg Rate (°/100ft)	Build Rate (°/100ft)	Turn Rate (°/100ft)	
7,601.3	0.00	0.00	7,308.0	-896.2	1,491.6	1,740.1	0.00	0.00	0.00	
CODELL										
7,640.0	0.00	0.00	7,346.7	-896.2	1,491.6	1,740.1	0.00	0.00	0.00	
7,653.3	0.00	0.00	7,360.0	-896.2	1,491.6	1,740.1	0.00	0.00	0.00	
GREENHORN										
7,680.0	0.00	0.00	7,386.7	-896.2	1,491.6	1,740.1	0.00	0.00	0.00	
7,720.0	0.00	0.00	7,426.7	-896.2	1,491.6	1,740.1	0.00	0.00	0.00	
7,737.3	0.00	0.00	7,444.0	-896.2	1,491.6	1,740.1	0.00	0.00	0.00	
GRANEROS										
7,748.3	0.00	0.00	7,455.0	-896.2	1,491.6	1,740.1	0.00	0.00	0.00	

Targets										
Target Name	Dip Angle (°)	Dip Dir. (°)	TVD (ft)	+N/-S (ft)	+E/-W (ft)	Northing (ft)	Easting (ft)	Latitude	Longitude	
- hit/miss target										
- Shape										
TARGET BHL 664'FN	0.00	0.00	5,900.0	-896.2	1,491.6	1,433,568.16	3,184,989.04	40.521640	-104.834591	
- plan hits target center										
- Point										
LEGAL BOX 400' X 400'	0.00	0.00	6,996.0	-896.2	1,491.6	1,433,568.16	3,184,989.04	40.521640	-104.834591	
- plan hits target center										
- Rectangle (sides W400.0 H400.0 D459.0)										
TARGET CIRCLE 66'	0.00	0.00	6,996.0	-896.2	1,491.6	1,433,568.16	3,184,989.04	40.521640	-104.834591	
- plan hits target center										
- Circle (radius 75.0)										

Casing Points						
Measured Depth (ft)	Vertical Depth (ft)	Name	Casing Diameter (")	Hole Diameter (")		
566.0	565.0	8 5/8"	8-5/8	12-1/4		

Formations						
Measured Depth (ft)	Vertical Depth (ft)	Name	Lithology	Dip (°)	Dip Direction (°)	
3,821.8	3,636.0	PARKMAN		0.00		
4,580.1	4,346.0	SUSSEX		0.00		
4,999.8	4,739.0	SHANNON		0.00		
7,289.3	6,996.0	NIOBRARA		0.00		
7,565.3	7,272.0	FT. HAYS		0.00		
7,601.3	7,308.0	CODELL		0.00		
7,653.3	7,360.0	GREENHORN		0.00		
7,737.3	7,444.0	GRANEROS		0.00		



BAYSWATER EXPLORATION & PRODUCTION

SEC.36-T7N-R67W

Baldrige & Schneider Pad Sec.36-T7N-R67W

Baldrige 1-1

Wellbore #1

Plan #1 (4-12-12)

Anticollision Report

19 April, 2012

Company:	BAYSWATER EXPLORATION & PRODUCTION	Local Co-ordinate Reference:	Well Baldridge 1-1
Project:	SEC.36-T7N-R67W	TVD Reference:	WELL @ 4893.0ft (Original Well Elev)
Reference Site:	Baldridge & Schneider Pad Sec.36-T7N-R67W	MD Reference:	WELL @ 4893.0ft (Original Well Elev)
Site Error:	0.0ft	North Reference:	True
Reference Well:	Baldridge 1-1	Survey Calculation Method:	Minimum Curvature
Well Error:	0.0ft	Output errors are at	2.00 sigma
Reference Wellbore	Wellbore #1	Database:	Landmark
Reference Design:	Plan #1 (4-12-12)	Offset TVD Reference:	Offset Datum

Reference	Plan #1 (4-12-12)		
Filter type:	NO GLOBAL FILTER: Using user defined selection & filtering criteria		
Interpolation Method:	MD Interval 100.0ft	Error Model:	ISCWSA
Depth Range:	Unlimited	Scan Method:	Closest Approach 3D
Results Limited by:	Maximum center-center distance of 10,000.0ft	Error Surface:	Elliptical Conic
Warning Levels Evaluated at:	2.00 Sigma		

Survey Tool Program	Date 4/12/2012			
From (ft)	To (ft)	Survey (Wellbore)	Tool Name	Description
0.0	7,748.3	Plan #1 (4-12-12) (Wellbore #1)	MWD	MWD - Standard

Summary						
Site Name	Reference Measured Depth (ft)	Offset Measured Depth (ft)	Distance Between Centres (ft)	Distance Between Ellipses (ft)	Separation Factor	Warning
Offset Well - Wellbore - Design						
Baldridge & Schneider Pad Sec.36-T7N-R67W						
Baldridge 8-1 - Wellbore #1 - Plan #1 (4-12-12)	200.0	200.0	15.0	14.3	22.271	CC
Baldridge 8-1 - Wellbore #1 - Plan #1 (4-12-12)	500.0	500.8	15.4	13.4	7.760	ES
Baldridge 8-1 - Wellbore #1 - Plan #1 (4-12-12)	700.0	701.3	20.0	16.8	6.270	SF
Schneider 16-36 - Wellbore #1 - Plan #1 (4-12-12)	546.3	545.4	23.8	21.5	10.609	CC, ES
Schneider 16-36 - Wellbore #1 - Plan #1 (4-12-12)	600.0	598.8	24.5	22.0	9.784	SF
Schneider 20-36 - Wellbore #1 - Plan #1 (4-12-12)	315.6	315.4	14.0	12.9	11.994	CC, ES
Schneider 20-36 - Wellbore #1 - Plan #1 (4-12-12)	400.0	399.1	16.6	15.0	10.685	SF
Schneider 37-36 - Wellbore #1 - Plan #1 (4-12-12)	646.1	644.4	34.4	31.6	12.407	CC, ES
Schneider 37-36 - Wellbore #1 - Plan #1 (4-12-12)	700.0	697.6	35.2	32.2	11.564	SF

Offset Design												
Baldridge & Schneider Pad Sec.36-T7N-R67W - Baldridge 8-1 - Wellbore #1 - Plan #1 (4-12-12)												
Survey Program: 0-MWD												
Reference												
Offset												
Semi Major Axis												
Distance												
Measured Depth (ft)	Vertical Depth (ft)	Measured Depth (ft)	Vertical Depth (ft)	Reference (ft)	Offset (ft)	Highside Toolface (°)	Offset Wellbore Centre +N/-S (ft)	+E/-W (ft)	Between Centres (ft)	Between Ellipses (ft)	Minimum Separation (ft)	Separation Factor
0.0	0.0	0.0	0.0	0.0	0.0	-91.41	-0.4	-15.0	15.0	15.0	0.00	N/A
100.0	100.0	100.0	100.0	0.1	0.1	-91.41	-0.4	-15.0	15.0	14.8	0.22	66.812
200.0	200.0	200.0	200.0	0.3	0.3	-91.41	-0.4	-15.0	15.0	14.3	0.67	22.271 CC
300.0	300.0	300.3	300.3	0.5	0.5	123.52	-1.8	-14.0	15.0	14.0	1.08	13.888
400.0	399.8	400.6	400.4	0.8	0.8	123.31	-6.2	-11.1	15.1	13.6	1.50	10.064
500.0	499.5	500.8	500.3	1.0	1.0	127.41	-13.4	-6.2	15.4	13.4	1.98	7.760 ES
600.0	598.8	601.1	599.8	1.3	1.3	128.75	-23.6	0.7	16.8	14.3	2.53	6.646
700.0	697.6	701.3	698.7	1.6	1.6	124.88	-36.6	9.5	20.0	16.8	3.19	6.270 SF
800.0	795.9	801.3	796.9	2.0	2.0	119.71	-52.4	20.3	25.2	21.2	3.97	6.348
900.0	893.5	901.1	894.1	2.4	2.5	115.18	-71.0	32.9	32.5	27.6	4.86	6.685
1,000.0	990.3	1,000.6	990.2	2.9	3.0	111.75	-92.4	47.4	41.9	36.0	5.87	7.141
1,100.0	1,086.2	1,099.8	1,085.1	3.5	3.6	109.28	-116.4	63.6	53.4	46.4	6.99	7.634
1,200.0	1,181.1	1,198.7	1,178.6	4.1	4.2	107.50	-143.0	81.7	66.8	58.6	8.23	8.116
1,300.0	1,274.9	1,297.2	1,270.6	4.8	4.9	105.84	-172.2	101.4	82.1	72.5	9.59	8.553
1,400.0	1,368.5	1,395.3	1,360.9	5.5	5.7	102.86	-203.8	122.9	98.2	87.2	11.04	8.895
1,500.0	1,462.2	1,492.7	1,449.3	6.3	6.5	99.11	-237.7	145.9	115.3	102.8	12.52	9.211

CC - Min centre to center distance or convergent point, SF - min separation factor, ES - min ellipse separation

Company:	BAYSWATER EXPLORATION & PRODUCTION	Local Co-ordinate Reference:	Well Baldridge 1-1
Project:	SEC.36-T7N-R67W	TVD Reference:	WELL @ 4893.0ft (Original Well Elev)
Reference Site:	Baldridge & Schneider Pad Sec.36-T7N-R67W	MD Reference:	WELL @ 4893.0ft (Original Well Elev)
Site Error:	0.0ft	North Reference:	True
Reference Well:	Baldridge 1-1	Survey Calculation Method:	Minimum Curvature
Well Error:	0.0ft	Output errors are at	2.00 sigma
Reference Wellbore	Wellbore #1	Database:	Landmark
Reference Design:	Plan #1 (4-12-12)	Offset TVD Reference:	Offset Datum

Offset Design		Baldridge & Schneider Pad Sec.36-T7N-R67W - Baldridge 8-1 - Wellbore #1 - Plan #1 (4-12-12)											Offset Site Error:	0.0 ft
Survey Program: 0-MWD													Offset Well Error:	0.0 ft
Reference		Offset		Semi Major Axis		Distance								Warning
Measured Depth (ft)	Vertical Depth (ft)	Measured Depth (ft)	Vertical Depth (ft)	Reference (ft)	Offset (ft)	Highside Toolface (°)	Offset Wellbore Centre +N/-S (ft)	+E/-W (ft)	Between Centres (ft)	Between Ellipses (ft)	Minimum Separation (ft)	Separation Factor		
1,600.0	1,555.8	1,590.6	1,537.2	7.0	7.4	95.45	-273.4	170.0	133.5	119.5	14.00	9.532		
1,700.0	1,649.4	1,688.6	1,625.2	7.7	8.2	92.66	-309.1	194.3	152.0	136.6	15.47	9.827		
1,800.0	1,743.1	1,786.7	1,713.3	8.5	9.1	90.47	-344.8	218.5	170.9	153.9	16.93	10.092		
1,900.0	1,836.7	1,884.7	1,801.3	9.2	10.0	88.72	-380.5	242.7	189.9	171.5	18.38	10.330		
2,000.0	1,930.3	1,982.7	1,889.3	10.0	10.9	87.29	-416.2	266.9	209.0	189.2	19.83	10.542		
2,100.0	2,023.9	2,080.7	1,977.3	10.7	11.8	86.10	-451.9	291.1	228.3	207.0	21.27	10.731		
2,200.0	2,117.6	2,178.8	2,065.3	11.5	12.7	85.10	-487.6	315.3	247.6	224.9	22.72	10.901		
2,300.0	2,211.2	2,276.8	2,153.4	12.2	13.6	84.24	-523.3	339.5	267.1	242.9	24.16	11.053		
2,400.0	2,304.8	2,374.8	2,241.4	13.0	14.5	83.49	-559.0	363.7	286.5	260.9	25.60	11.190		
2,500.0	2,398.5	2,472.8	2,329.4	13.7	15.4	82.84	-594.8	387.9	306.0	279.0	27.05	11.314		
2,600.0	2,492.1	2,570.9	2,417.4	14.5	16.3	82.27	-630.5	412.1	325.5	297.1	28.49	11.427		
2,700.0	2,585.7	2,668.9	2,505.4	15.2	17.2	81.77	-666.2	436.3	345.1	315.2	29.93	11.530		
2,800.0	2,679.3	2,766.9	2,593.5	16.0	18.1	81.32	-701.9	460.5	364.7	333.3	31.37	11.625		
2,900.0	2,773.0	2,864.9	2,681.5	16.7	19.0	80.91	-737.6	484.7	384.3	351.5	32.81	11.711		
3,000.0	2,866.6	2,963.0	2,769.5	17.5	19.9	80.54	-773.3	508.9	403.9	369.7	34.26	11.791		
3,100.0	2,960.2	3,061.0	2,857.5	18.2	20.8	80.21	-809.0	533.2	423.6	387.9	35.70	11.865		
3,200.0	3,053.8	3,159.0	2,945.5	19.0	21.7	79.91	-844.7	557.4	443.2	406.1	37.14	11.933		
3,300.0	3,147.5	3,257.0	3,033.6	19.7	22.6	79.63	-880.4	581.6	462.9	424.3	38.58	11.996		
3,400.0	3,241.1	3,355.1	3,121.6	20.5	23.5	79.37	-916.1	605.8	482.5	442.5	40.03	12.055		
3,500.0	3,334.7	3,453.1	3,209.6	21.2	24.4	79.14	-951.9	630.0	502.2	460.7	41.47	12.111		
3,600.0	3,428.4	3,551.1	3,297.6	22.0	25.3	78.92	-987.6	654.2	521.9	479.0	42.91	12.162		
3,700.0	3,522.0	3,649.1	3,385.7	22.7	26.2	78.72	-1,023.3	678.4	541.6	497.2	44.35	12.211		
3,800.0	3,615.6	3,747.2	3,473.7	23.5	27.1	78.53	-1,059.0	702.6	561.3	515.5	45.80	12.256		
3,900.0	3,709.2	3,845.2	3,561.7	24.2	28.0	78.36	-1,094.7	726.8	581.0	533.7	47.24	12.299		
4,000.0	3,802.9	3,943.2	3,649.7	25.0	29.0	78.20	-1,130.4	751.0	600.7	552.0	48.68	12.339		
4,100.0	3,896.5	4,041.2	3,737.7	25.8	29.9	78.04	-1,166.1	775.2	620.4	570.3	50.12	12.377		
4,200.0	3,990.1	4,139.3	3,825.8	26.5	30.8	77.90	-1,201.8	799.4	640.1	588.5	51.57	12.413		
4,300.0	4,083.8	4,237.3	3,913.8	27.3	31.7	77.77	-1,237.5	823.6	659.8	606.8	53.01	12.447		
4,400.0	4,177.4	4,335.3	4,001.8	28.0	32.6	77.64	-1,273.3	847.9	679.5	625.1	54.45	12.479		
4,500.0	4,271.0	4,433.3	4,089.8	28.8	33.5	77.52	-1,309.0	872.1	699.3	643.4	55.90	12.510		
4,600.0	4,364.6	4,531.4	4,177.8	29.5	34.4	77.41	-1,344.7	896.3	719.0	661.7	57.34	12.539		
4,700.0	4,458.3	4,629.4	4,265.9	30.3	35.3	77.30	-1,380.4	920.5	738.7	679.9	58.78	12.567		
4,800.0	4,551.9	4,727.4	4,353.9	31.0	36.2	77.20	-1,416.1	944.7	758.5	698.2	60.23	12.593		
4,900.0	4,645.5	4,825.4	4,441.9	31.8	37.1	77.10	-1,451.8	968.9	778.2	716.5	61.67	12.619		
5,000.0	4,739.2	4,923.5	4,529.9	32.5	38.0	77.01	-1,487.5	993.1	797.9	734.8	63.11	12.643		
5,100.0	4,832.8	5,021.5	4,618.0	33.3	38.9	76.92	-1,523.2	1,017.3	817.7	753.1	64.56	12.666		
5,200.0	4,926.5	5,119.5	4,706.0	34.0	39.8	76.96	-1,558.9	1,041.5	837.4	771.4	66.01	12.687		
5,300.0	5,021.1	5,217.3	4,793.8	34.6	40.7	77.09	-1,594.6	1,065.7	857.9	790.6	67.29	12.748		
5,400.0	5,116.8	5,314.8	4,881.3	35.0	41.6	77.03	-1,630.1	1,089.7	879.1	810.6	68.43	12.845		
5,500.0	5,213.4	5,411.7	4,968.4	35.5	42.5	76.79	-1,665.4	1,113.7	901.1	831.7	69.44	12.978		
5,600.0	5,310.9	5,508.1	5,054.9	35.9	43.4	76.39	-1,700.5	1,137.5	924.1	853.8	70.30	13.146		
5,700.0	5,409.1	5,603.8	5,140.8	36.2	44.3	75.85	-1,735.4	1,161.1	948.2	877.1	71.02	13.350		
5,800.0	5,507.9	5,698.6	5,226.0	36.5	45.2	75.19	-1,769.9	1,184.5	973.4	901.8	71.61	13.592		
5,900.0	5,607.2	5,792.5	5,310.3	36.7	46.0	74.44	-1,804.1	1,207.7	999.9	927.8	72.07	13.874		
6,000.0	5,706.8	5,885.4	5,393.7	36.8	46.9	73.60	-1,837.9	1,230.6	1,027.8	955.4	72.40	14.195		
6,100.0	5,806.7	5,977.0	5,476.0	37.0	47.8	72.71	-1,871.3	1,253.3	1,057.3	984.7	72.62	14.560		
6,200.0	5,906.7	6,067.4	5,557.1	37.1	48.6	-167.91	-1,904.2	1,275.6	1,088.6	1,015.9	72.71	14.972		
6,300.0	6,006.7	6,157.2	5,637.8	37.1	49.4	-169.45	-1,937.0	1,297.8	1,121.1	1,048.7	72.41	15.482		
6,400.0	6,106.7	6,247.0	5,718.4	37.2	50.2	-170.92	-1,969.7	1,319.9	1,154.4	1,082.3	72.12	16.007		
6,500.0	6,206.7	6,368.6	5,828.3	37.3	51.2	-172.73	-2,012.7	1,349.1	1,187.5	1,115.9	71.60	16.585		
6,600.0	6,306.7	6,506.2	5,955.1	37.3	52.0	-174.46	-2,056.8	1,379.0	1,217.9	1,146.8	71.06	17.140		

CC - Min centre to center distance or convergent point, SF - min separation factor, ES - min ellipse separation

Company:	BAYSWATER EXPLORATION & PRODUCTION	Local Co-ordinate Reference:	Well Baldrige 1-1
Project:	SEC.36-T7N-R67W	TVD Reference:	WELL @ 4893.0ft (Original Well Elev)
Reference Site:	Baldrige & Schneider Pad Sec.36-T7N-R67W	MD Reference:	WELL @ 4893.0ft (Original Well Elev)
Site Error:	0.0ft	North Reference:	True
Reference Well:	Baldrige 1-1	Survey Calculation Method:	Minimum Curvature
Well Error:	0.0ft	Output errors are at	2.00 sigma
Reference Wellbore	Wellbore #1	Database:	Landmark
Reference Design:	Plan #1 (4-12-12)	Offset TVD Reference:	Offset Datum

Offset Design												Baldridge & Schneider Pad Sec.36-T7N-R67W - Baldridge 8-1 - Wellbore #1 - Plan #1 (4-12-12)		Offset Site Error:		0.0 ft	
Survey Program: 0-MWD														Offset Well Error:		0.0 ft	
Reference		Offset		Semi Major Axis			Distance							Warning			
Measured Depth	Vertical Depth	Measured Depth	Vertical Depth	Reference	Offset	Highside Toolface	Offset Wellbore Centre		Between Centres	Between Ellipses	Minimum Separation	Separation Factor					
(ft)	(ft)	(ft)	(ft)	(ft)	(ft)	(°)	+N/-S (ft)	+E/-W (ft)	(ft)	(ft)	(ft)						
6,700.0	6,406.7	6,649.1	6,089.5	37.4	52.8	-175.94	-2,097.2	1,406.4	1,245.1	1,174.5	70.60	17.636					
6,800.0	6,506.7	6,797.0	6,230.9	37.5	53.5	-177.18	-2,133.1	1,430.7	1,268.7	1,198.5	70.25	18.059					
6,900.0	6,606.7	6,949.3	6,378.6	37.6	54.1	-178.19	-2,163.6	1,451.4	1,288.5	1,218.5	70.00	18.406					
7,000.0	6,706.7	7,105.3	6,531.7	37.7	54.6	-178.96	-2,188.2	1,468.1	1,304.1	1,234.2	69.86	18.665					
7,100.0	6,806.7	7,264.1	6,689.0	37.7	55.0	-179.50	-2,206.1	1,480.2	1,315.3	1,245.4	69.82	18.837					
7,200.0	6,906.7	7,424.8	6,849.2	37.8	55.2	-179.82	-2,216.8	1,487.5	1,321.9	1,252.0	69.89	18.914					
7,300.0	7,006.7	7,582.4	7,006.7	37.9	55.4	-179.92	-2,220.1	1,489.7	1,323.9	1,253.9	70.06	18.897					
7,400.0	7,106.7	7,682.4	7,106.7	38.0	55.4	-179.92	-2,220.1	1,489.7	1,323.9	1,253.7	70.23	18.850					
7,500.0	7,206.7	7,782.4	7,206.7	38.1	55.5	-179.92	-2,220.1	1,489.7	1,323.9	1,253.5	70.41	18.804					
7,600.0	7,306.7	7,882.4	7,306.7	38.1	55.5	-179.92	-2,220.1	1,489.7	1,323.9	1,253.4	70.59	18.757					
7,700.0	7,406.7	7,982.4	7,406.7	38.2	55.6	-179.92	-2,220.1	1,489.7	1,323.9	1,253.2	70.76	18.709					
7,748.3	7,455.0	8,030.7	7,455.0	38.3	55.6	-179.92	-2,220.1	1,489.7	1,323.9	1,253.1	70.85	18.686					

Company:	BAYSWATER EXPLORATION & PRODUCTION	Local Co-ordinate Reference:	Well Baldrige 1-1
Project:	SEC.36-T7N-R67W	TVD Reference:	WELL @ 4893.0ft (Original Well Elev)
Reference Site:	Baldrige & Schneider Pad Sec.36-T7N-R67W	MD Reference:	WELL @ 4893.0ft (Original Well Elev)
Site Error:	0.0ft	North Reference:	True
Reference Well:	Baldrige 1-1	Survey Calculation Method:	Minimum Curvature
Well Error:	0.0ft	Output errors are at	2.00 sigma
Reference Wellbore	Wellbore #1	Database:	Landmark
Reference Design:	Plan #1 (4-12-12)	Offset TVD Reference:	Offset Datum

Offset Design													Offset Site Error:	0.0ft
Survey Program: 0-MWD													Offset Well Error:	0.0ft
Reference														
Measured Depth (ft)	Vertical Depth (ft)	Measured Depth (ft)	Vertical Depth (ft)	Semi Major Axis Reference (ft)	Offset (ft)	Highside Toolface (°)	Offset Wellbore Centre +N/-S (ft)	+E/-W (ft)	Distance Between Centres (ft)	Between Ellipses (ft)	Minimum Separation (ft)	Separation Factor	Warning	
0.0	0.0	0.0	0.0	0.0	0.0	89.99	0.0	29.7	29.7					
100.0	100.0	100.0	100.0	0.1	0.1	89.99	0.0	29.7	29.7	29.5	0.22	132.347		
200.0	200.0	200.0	200.0	0.3	0.3	89.99	0.0	29.7	29.7	29.1	0.67	44.116		
300.0	300.0	300.0	300.0	0.5	0.6	-57.87	0.0	29.7	28.8	27.7	1.10	26.060		
400.0	399.8	399.8	399.8	0.8	0.8	-67.58	0.0	29.7	26.4	24.8	1.54	17.138		
500.0	499.5	499.5	499.5	1.0	1.0	-81.50	0.0	29.7	24.2	22.2	2.01	12.035		
546.3	545.4	545.4	545.4	1.1	1.1	-90.00	0.0	29.7	23.8	21.5	2.24	10.609 CC, ES		
600.0	598.8	598.8	598.8	1.3	1.2	-102.69	0.0	29.7	24.5	22.0	2.51	9.784 SF		
700.0	697.6	697.6	697.6	1.6	1.5	-126.79	0.0	29.7	31.0	28.1	2.98	10.404		
800.0	795.9	795.9	795.9	2.0	1.7	-143.54	0.0	29.7	44.3	40.9	3.43	12.917		
900.0	893.5	893.5	893.5	2.4	1.9	-153.44	0.0	29.7	63.0	59.2	3.88	16.240		
1,000.0	990.3	990.3	990.3	2.9	2.1	-159.42	0.0	29.7	86.1	81.8	4.34	19.858		
1,100.0	1,086.2	1,087.7	1,087.7	3.5	2.3	-162.69	0.4	31.0	112.5	107.7	4.80	23.466		
1,200.0	1,181.1	1,185.4	1,185.3	4.1	2.5	-163.81	1.7	35.5	140.9	135.6	5.26	26.776		
1,300.0	1,274.9	1,283.4	1,282.9	4.8	2.8	-164.15	3.9	43.2	170.6	164.9	5.76	29.609		
1,400.0	1,368.5	1,382.2	1,381.1	5.5	3.0	-163.97	7.1	54.2	199.3	193.0	6.31	31.568		
1,500.0	1,462.2	1,481.9	1,479.6	6.3	3.3	-163.04	11.3	68.6	226.5	219.5	6.92	32.721		
1,600.0	1,555.8	1,582.1	1,578.1	7.0	3.6	-161.57	16.5	86.3	252.2	244.6	7.60	33.183		
1,700.0	1,649.4	1,682.7	1,676.2	7.7	3.9	-159.71	22.6	107.5	276.6	268.2	8.37	33.054		
1,800.0	1,743.1	1,783.3	1,773.6	8.5	4.3	-157.51	29.8	131.9	299.9	290.6	9.24	32.444		
1,900.0	1,836.7	1,883.9	1,869.9	9.2	4.8	-155.05	37.8	159.6	322.4	312.1	10.25	31.462		
2,000.0	1,930.3	1,984.0	1,964.8	10.0	5.3	-152.36	46.8	190.4	344.3	332.9	11.38	30.243		
2,100.0	2,023.9	2,082.9	2,057.3	10.7	6.0	-149.51	56.5	223.9	366.0	353.3	12.66	28.913		
2,200.0	2,117.6	2,178.9	2,146.8	11.5	6.6	-146.88	66.3	257.4	388.2	374.2	14.00	27.734		
2,300.0	2,211.2	2,274.9	2,236.2	12.2	7.2	-144.54	76.0	290.9	411.1	395.7	15.37	26.744		
2,400.0	2,304.8	2,370.9	2,325.6	13.0	7.9	-142.45	85.8	324.4	434.6	417.8	16.77	25.914		
2,500.0	2,398.5	2,466.9	2,415.1	13.7	8.6	-140.56	95.5	357.9	458.6	440.4	18.19	25.217		
2,600.0	2,492.1	2,562.9	2,504.5	14.5	9.3	-138.86	105.3	391.4	483.1	463.5	19.61	24.629		
2,700.0	2,585.7	2,658.9	2,593.9	15.2	10.0	-137.32	115.1	424.9	507.9	486.8	21.05	24.132		
2,800.0	2,679.3	2,754.9	2,683.3	16.0	10.7	-135.93	124.8	458.4	533.0	510.5	22.48	23.708		
2,900.0	2,773.0	2,850.9	2,772.8	16.7	11.4	-134.66	134.6	491.9	558.4	534.5	23.92	23.345		
3,000.0	2,866.6	2,946.9	2,862.2	17.5	12.1	-133.49	144.3	525.4	584.1	558.7	25.36	23.033		
3,100.0	2,960.2	3,042.9	2,951.6	18.2	12.8	-132.43	154.1	558.9	609.9	583.1	26.80	22.762		
3,200.0	3,053.8	3,138.9	3,041.1	19.0	13.5	-131.45	163.8	592.4	636.0	607.7	28.23	22.527		
3,300.0	3,147.5	3,234.9	3,130.5	19.7	14.2	-130.55	173.6	625.9	662.2	632.5	29.67	22.320		
3,400.0	3,241.1	3,330.9	3,219.9	20.5	14.9	-129.71	183.3	659.4	688.5	657.4	31.10	22.139		
3,500.0	3,334.7	3,426.9	3,309.4	21.2	15.7	-128.94	193.1	693.0	715.0	682.4	32.53	21.979		
3,600.0	3,428.4	3,522.9	3,398.8	22.0	16.4	-128.22	202.8	726.5	741.5	707.6	33.96	21.837		
3,700.0	3,522.0	3,618.9	3,488.2	22.7	17.1	-127.55	212.6	760.0	768.2	732.8	35.38	21.711		
3,800.0	3,615.6	3,714.9	3,577.6	23.5	17.8	-126.93	222.4	793.5	795.0	758.2	36.81	21.598		
3,900.0	3,709.2	3,810.9	3,667.1	24.2	18.6	-126.34	232.1	827.0	821.8	783.6	38.23	21.496		
4,000.0	3,802.9	3,906.9	3,756.5	25.0	19.3	-125.80	241.9	860.5	848.8	809.1	39.65	21.405		
4,100.0	3,896.5	4,002.9	3,845.9	25.8	20.0	-125.28	251.6	894.0	875.8	834.7	41.07	21.323		
4,200.0	3,990.1	4,098.9	3,935.4	26.5	20.7	-124.80	261.4	927.5	902.8	860.3	42.49	21.248		
4,300.0	4,083.8	4,194.9	4,024.8	27.3	21.5	-124.34	271.1	961.0	930.0	886.0	43.91	21.181		
4,400.0	4,177.4	4,290.9	4,114.2	28.0	22.2	-123.92	280.9	994.5	957.1	911.8	45.32	21.119		
4,500.0	4,271.0	4,386.9	4,203.7	28.8	22.9	-123.51	290.6	1,028.0	984.3	937.6	46.73	21.063		
4,600.0	4,364.6	4,482.8	4,293.1	29.5	23.7	-123.13	300.4	1,061.5	1,011.6	963.4	48.14	21.012		
4,700.0	4,458.3	4,578.8	4,382.5	30.3	24.4	-122.76	310.1	1,095.0	1,038.9	989.3	49.55	20.965		
4,800.0	4,551.9	4,674.8	4,471.9	31.0	25.1	-122.42	319.9	1,128.5	1,066.2	1,015.3	50.96	20.922		
4,900.0	4,645.5	4,770.8	4,561.4	31.8	25.9	-122.09	329.7	1,162.0	1,093.6	1,041.2	52.37	20.882		

CC - Min centre to center distance or convergent point, SF - min separation factor, ES - min ellipse separation

Company:	BAYSWATER EXPLORATION & PRODUCTION	Local Co-ordinate Reference:	Well Baldridge 1-1
Project:	SEC.36-T7N-R67W	TVD Reference:	WELL @ 4893.0ft (Original Well Elev)
Reference Site:	Baldridge & Schneider Pad Sec.36-T7N-R67W	MD Reference:	WELL @ 4893.0ft (Original Well Elev)
Site Error:	0.0ft	North Reference:	True
Reference Well:	Baldridge 1-1	Survey Calculation Method:	Minimum Curvature
Well Error:	0.0ft	Output errors are at	2.00 sigma
Reference Wellbore	Wellbore #1	Database:	Landmark
Reference Design:	Plan #1 (4-12-12)	Offset TVD Reference:	Offset Datum

Baldridge & Schneider Pad Sec.36-T7N-R67W - Schneider 16-36 - Wellbore #1 - Plan #1 (4-12-12)													Offset Site Error:		0.0 ft
Survey Program: 0-MWD													Offset Well Error:		0.0 ft
Reference		Offset		Semi Major Axis			Distance							Warning	
Measured Depth (ft)	Vertical Depth (ft)	Measured Depth (ft)	Vertical Depth (ft)	Reference (ft)	Offset (ft)	Highside Toolface (°)	Offset Wellbore Centre		Between Centres (ft)	Between Ellipses (ft)	Minimum Separation (ft)	Separation Factor			
							+N/-S (ft)	+E/-W (ft)							
5,000.0	4,739.2	4,866.8	4,650.8	32.5	26.6	-121.78	339.4	1,195.5	1,121.0	1,067.2	53.78	20.845			
5,100.0	4,832.8	4,962.8	4,740.2	33.3	27.3	-121.48	349.2	1,229.0	1,148.4	1,093.2	55.18	20.811			
5,200.0	4,926.5	5,058.8	4,829.7	34.0	28.1	-121.35	358.9	1,262.5	1,175.8	1,119.2	56.58	20.781			
5,300.0	5,021.1	5,155.1	4,919.3	34.6	28.8	-121.42	368.7	1,296.1	1,201.8	1,143.9	57.87	20.765			
5,400.0	5,116.8	5,257.7	5,015.2	35.0	29.5	-121.32	379.0	1,331.4	1,226.0	1,166.9	59.08	20.749			
5,500.0	5,213.4	5,366.3	5,117.8	35.5	30.1	-121.18	388.9	1,365.4	1,247.7	1,187.5	60.17	20.737			
5,600.0	5,310.9	5,476.2	5,223.0	35.9	30.6	-121.04	397.8	1,395.9	1,266.8	1,205.6	61.14	20.719			
5,700.0	5,409.1	5,587.3	5,330.5	36.2	31.1	-120.90	405.6	1,422.8	1,283.2	1,221.2	62.00	20.696			
5,800.0	5,507.9	5,699.5	5,440.1	36.5	31.5	-120.76	412.3	1,446.0	1,296.8	1,234.1	62.75	20.668			
5,900.0	5,607.2	5,812.6	5,551.4	36.7	31.9	-120.61	417.9	1,465.1	1,307.7	1,244.4	63.37	20.637			
6,000.0	5,706.8	5,926.4	5,664.1	36.8	32.2	-120.45	422.2	1,480.0	1,315.8	1,251.9	63.88	20.600			
6,100.0	5,806.7	6,040.8	5,778.0	37.0	32.4	-120.29	425.4	1,490.7	1,321.1	1,256.8	64.27	20.556			
6,200.0	5,906.7	6,155.7	5,892.6	37.1	32.6	0.24	427.2	1,497.1	1,323.5	1,258.9	64.55	20.503			
6,300.0	6,006.7	6,269.7	6,006.7	37.1	32.7	0.32	427.8	1,499.0	1,324.0	1,259.2	64.76	20.445			
6,400.0	6,106.7	6,369.7	6,106.7	37.2	32.8	0.32	427.8	1,499.0	1,324.0	1,259.0	64.93	20.391			
6,500.0	6,206.7	6,469.7	6,206.7	37.3	32.9	0.32	427.8	1,499.0	1,324.0	1,258.9	65.10	20.337			
6,600.0	6,306.7	6,569.7	6,306.7	37.3	33.0	0.32	427.8	1,499.0	1,324.0	1,258.7	65.28	20.282			
6,700.0	6,406.7	6,669.7	6,406.7	37.4	33.0	0.32	427.8	1,499.0	1,324.0	1,258.5	65.46	20.226			
6,800.0	6,506.7	6,769.7	6,506.7	37.5	33.1	0.32	427.8	1,499.0	1,324.0	1,258.3	65.64	20.170			
6,900.0	6,606.7	6,869.7	6,606.7	37.6	33.2	0.32	427.8	1,499.0	1,324.0	1,258.1	65.82	20.113			
7,000.0	6,706.7	6,969.7	6,706.7	37.7	33.3	0.32	427.8	1,499.0	1,324.0	1,257.9	66.01	20.056			
7,100.0	6,806.7	7,069.7	6,806.7	37.7	33.4	0.32	427.8	1,499.0	1,324.0	1,257.8	66.20	19.999			
7,200.0	6,906.7	7,169.7	6,906.7	37.8	33.5	0.32	427.8	1,499.0	1,324.0	1,257.6	66.39	19.941			
7,300.0	7,006.7	7,269.7	7,006.7	37.9	33.6	0.32	427.8	1,499.0	1,324.0	1,257.4	66.59	19.883			
7,400.0	7,106.7	7,369.7	7,106.7	38.0	33.7	0.32	427.8	1,499.0	1,324.0	1,257.2	66.79	19.824			
7,500.0	7,206.7	7,469.7	7,206.7	38.1	33.8	0.32	427.8	1,499.0	1,324.0	1,257.0	66.99	19.765			
7,600.0	7,306.7	7,569.7	7,306.7	38.1	33.9	0.32	427.8	1,499.0	1,324.0	1,256.8	67.19	19.705			
7,700.0	7,406.7	7,669.7	7,406.7	38.2	34.0	0.32	427.8	1,499.0	1,324.0	1,256.6	67.39	19.646			
7,748.3	7,455.0	7,718.0	7,455.0	38.3	34.1	0.32	427.8	1,499.0	1,324.0	1,256.5	67.49	19.617			

Company:	BAYSWATER EXPLORATION & PRODUCTION	Local Co-ordinate Reference:	Well Baldridge 1-1
Project:	SEC.36-T7N-R67W	TVD Reference:	WELL @ 4893.0ft (Original Well Elev)
Reference Site:	Baldridge & Schneider Pad Sec.36-T7N-R67W	MD Reference:	WELL @ 4893.0ft (Original Well Elev)
Site Error:	0.0ft	North Reference:	True
Reference Well:	Baldridge 1-1	Survey Calculation Method:	Minimum Curvature
Well Error:	0.0ft	Output errors are at	2.00 sigma
Reference Wellbore	Wellbore #1	Database:	Landmark
Reference Design:	Plan #1 (4-12-12)	Offset TVD Reference:	Offset Datum

Offset Design													Offset Site Error:	0.0ft
Survey Program: 0-MWD													Offset Well Error:	0.0ft
Reference		Offset		Semi Major Axis			Distance							Warning
Measured Depth (ft)	Vertical Depth (ft)	Measured Depth (ft)	Vertical Depth (ft)	Reference (ft)	Offset (ft)	Highside Toolface (°)	Offset Wellbore Centre +N/-S (ft)	+E/-W (ft)	Between Centres (ft)	Between Ellipses (ft)	Minimum Separation (ft)	Separation Factor		
0.0	0.0	0.0	0.0	0.0	0.0	90.03	0.0	14.7	14.7	14.7	0.00	N/A		
100.0	100.0	100.0	100.0	0.1	0.1	90.03	0.0	14.7	14.7	14.5	0.22	65.555		
200.0	200.0	200.0	200.0	0.3	0.3	90.03	0.0	14.7	14.7	14.1	0.67	21.852		
300.0	300.0	299.9	299.9	0.5	0.6	-67.97	1.7	14.7	14.1	13.0	1.10	12.780		
315.6	315.6	315.4	315.4	0.6	0.6	-72.50	2.3	14.7	14.0	12.9	1.17	11.994 CC, ES		
400.0	399.8	399.1	399.0	0.8	0.8	-104.40	6.9	14.7	16.6	15.0	1.55	10.685 SF		
500.0	499.5	497.2	496.7	1.0	1.0	-127.33	15.2	15.0	28.7	26.6	2.05	13.972		
600.0	598.8	594.3	593.2	1.3	1.3	-131.88	25.7	17.6	47.2	44.6	2.53	18.646		
700.0	697.6	690.5	688.4	1.6	1.6	-132.67	37.9	22.7	69.8	66.8	3.04	22.979		
800.0	795.9	785.5	782.1	2.0	1.9	-132.33	51.9	30.3	96.1	92.5	3.59	26.732		
900.0	893.5	879.2	873.9	2.4	2.3	-131.59	67.6	40.2	125.6	121.4	4.21	29.865		
1,000.0	990.3	971.5	963.8	2.9	2.7	-130.72	84.7	52.3	158.4	153.5	4.89	32.404		
1,100.0	1,086.2	1,062.3	1,051.6	3.5	3.1	-129.81	103.3	66.5	194.2	188.6	5.64	34.419		
1,200.0	1,181.1	1,154.2	1,139.8	4.1	3.6	-129.15	123.2	82.3	232.6	226.1	6.47	35.933		
1,300.0	1,274.9	1,245.7	1,227.8	4.8	4.0	-129.58	143.0	98.1	272.6	265.3	7.35	37.071		
1,400.0	1,368.5	1,337.0	1,315.6	5.5	4.5	-130.62	162.8	113.9	313.0	304.7	8.27	37.854		
1,500.0	1,462.2	1,428.4	1,403.3	6.3	5.0	-131.43	182.5	129.6	353.5	344.3	9.19	38.441		
1,600.0	1,555.8	1,519.7	1,491.1	7.0	5.5	-132.07	202.3	145.4	394.0	383.8	10.13	38.874		
1,700.0	1,649.4	1,611.1	1,578.9	7.7	6.0	-132.59	222.1	161.1	434.5	423.4	11.08	39.205		
1,800.0	1,743.1	1,702.4	1,666.7	8.5	6.5	-133.02	241.9	176.9	475.0	463.0	12.04	39.464		
1,900.0	1,836.7	1,793.8	1,754.5	9.2	7.1	-133.39	261.7	192.6	515.6	502.6	13.00	39.670		
2,000.0	1,930.3	1,885.1	1,842.3	10.0	7.6	-133.70	281.4	208.4	556.2	542.2	13.96	39.837		
2,100.0	2,023.9	1,976.5	1,930.0	10.7	8.1	-133.97	301.2	224.2	596.8	581.9	14.93	39.974		
2,200.0	2,117.6	2,067.8	2,017.8	11.5	8.6	-134.20	321.0	239.9	637.4	621.5	15.90	40.089		
2,300.0	2,211.2	2,159.2	2,105.6	12.2	9.1	-134.41	340.8	255.7	678.0	661.2	16.87	40.185		
2,400.0	2,304.8	2,250.5	2,193.4	13.0	9.6	-134.60	360.6	271.4	718.7	700.8	17.85	40.267		
2,500.0	2,398.5	2,341.9	2,281.2	13.7	10.1	-134.76	380.3	287.2	759.3	740.5	18.82	40.338		
2,600.0	2,492.1	2,433.2	2,369.0	14.5	10.6	-134.91	400.1	302.9	799.9	780.1	19.80	40.399		
2,700.0	2,585.7	2,524.6	2,456.7	15.2	11.2	-135.04	419.9	318.7	840.6	819.8	20.78	40.452		
2,800.0	2,679.3	2,616.0	2,544.5	16.0	11.7	-135.16	439.7	334.5	881.2	859.5	21.76	40.499		
2,900.0	2,773.0	2,707.3	2,632.3	16.7	12.2	-135.27	459.4	350.2	921.9	899.1	22.74	40.540		
3,000.0	2,866.6	2,798.7	2,720.1	17.5	12.7	-135.37	479.2	366.0	962.5	938.8	23.72	40.576		
3,100.0	2,960.2	2,890.0	2,807.9	18.2	13.2	-135.46	499.0	381.7	1,003.2	978.5	24.70	40.609		
3,200.0	3,053.8	2,981.4	2,895.7	19.0	13.7	-135.55	518.8	397.5	1,043.8	1,018.1	25.69	40.638		
3,300.0	3,147.5	3,072.7	2,983.4	19.7	14.3	-135.63	538.6	413.2	1,084.5	1,057.8	26.67	40.664		
3,400.0	3,241.1	3,164.1	3,071.2	20.5	14.8	-135.70	558.3	429.0	1,125.1	1,097.5	27.65	40.688		
3,500.0	3,334.7	3,255.4	3,159.0	21.2	15.3	-135.77	578.1	444.8	1,165.8	1,137.2	28.64	40.709		
3,600.0	3,428.4	3,346.8	3,246.8	22.0	15.8	-135.83	597.9	460.5	1,206.5	1,176.8	29.62	40.729		
3,700.0	3,522.0	3,438.1	3,334.6	22.7	16.3	-135.89	617.7	476.3	1,247.1	1,216.5	30.61	40.747		
3,800.0	3,615.6	3,529.5	3,422.3	23.5	16.9	-135.95	637.5	492.0	1,287.8	1,256.2	31.59	40.763		
3,900.0	3,709.2	3,620.8	3,510.1	24.2	17.4	-136.00	657.2	507.8	1,328.4	1,295.9	32.58	40.778		
4,000.0	3,802.9	3,712.2	3,597.9	25.0	17.9	-136.05	677.0	523.5	1,369.1	1,335.5	33.56	40.791		
4,100.0	3,896.5	3,803.5	3,685.7	25.8	18.4	-136.10	696.8	539.3	1,409.8	1,375.2	34.55	40.804		
4,200.0	3,990.1	3,894.9	3,773.5	26.5	18.9	-136.14	716.6	555.1	1,450.4	1,414.9	35.54	40.815		
4,300.0	4,083.8	3,986.2	3,861.3	27.3	19.4	-136.18	736.3	570.8	1,491.1	1,454.6	36.52	40.826		
4,400.0	4,177.4	4,077.6	3,949.0	28.0	20.0	-136.22	756.1	586.6	1,531.8	1,494.3	37.51	40.836		
4,500.0	4,271.0	4,169.0	4,036.8	28.8	20.5	-136.26	775.9	602.3	1,572.4	1,533.9	38.50	40.845		
4,600.0	4,364.6	4,260.3	4,124.6	29.5	21.0	-136.29	795.7	618.1	1,613.1	1,573.6	39.48	40.854		
4,700.0	4,458.3	4,351.7	4,212.4	30.3	21.5	-136.33	815.5	633.8	1,653.8	1,613.3	40.47	40.861		
4,800.0	4,551.9	4,443.0	4,300.2	31.0	22.0	-136.36	835.2	649.6	1,694.4	1,653.0	41.46	40.869		
4,900.0	4,645.5	4,534.4	4,388.0	31.8	22.6	-136.39	855.0	665.4	1,735.1	1,692.7	42.45	40.876		

CC - Min centre to center distance or convergent point, SF - min separation factor, ES - min ellipse separation

Company:	BAYSWATER EXPLORATION & PRODUCTION	Local Co-ordinate Reference:	Well Baldridge 1-1
Project:	SEC.36-T7N-R67W	TVD Reference:	WELL @ 4893.0ft (Original Well Elev)
Reference Site:	Baldridge & Schneider Pad Sec.36-T7N-R67W	MD Reference:	WELL @ 4893.0ft (Original Well Elev)
Site Error:	0.0ft	North Reference:	True
Reference Well:	Baldridge 1-1	Survey Calculation Method:	Minimum Curvature
Well Error:	0.0ft	Output errors are at	2.00 sigma
Reference Wellbore	Wellbore #1	Database:	Landmark
Reference Design:	Plan #1 (4-12-12)	Offset TVD Reference:	Offset Datum

Offset Design													Offset Site Error:	0.0 ft
Survey Program: 0-MWD													Offset Well Error:	0.0 ft
Reference														
Measured Depth (ft)	Vertical Depth (ft)	Measured Depth (ft)	Vertical Depth (ft)	Semi Major Axis Reference (ft)	Offset (ft)	Highside Toolface (°)	Offset Wellbore Centre +N/-S (ft)	+E/-W (ft)	Between Centres (ft)	Between Ellipses (ft)	Minimum Separation (ft)	Separation Factor	Warning	
5,000.0	4,739.2	4,625.7	4,475.7	32.5	23.1	-136.42	874.8	681.1	1,775.8	1,732.3	43.44	40.882		
5,100.0	4,832.8	4,717.1	4,563.5	33.3	23.6	-136.44	894.6	696.9	1,816.4	1,772.0	44.43	40.888		
5,200.0	4,926.5	4,808.5	4,651.4	34.0	24.1	-136.68	914.4	712.6	1,857.0	1,811.5	45.43	40.871		
5,300.0	5,021.1	4,900.7	4,740.0	34.6	24.6	-137.21	934.3	728.5	1,895.7	1,849.2	46.41	40.842		
5,400.0	5,116.8	4,993.8	4,829.4	35.0	25.2	-137.62	954.5	744.6	1,932.0	1,884.6	47.37	40.788		
5,500.0	5,213.4	5,087.7	4,919.6	35.5	25.7	-137.92	974.8	760.8	1,965.9	1,917.6	48.29	40.714		
5,600.0	5,310.9	5,184.4	5,012.6	35.9	26.2	-138.11	995.8	777.5	1,997.4	1,948.2	49.18	40.616		
5,700.0	5,409.1	5,339.6	5,162.9	36.2	26.9	-138.10	1,025.9	801.5	2,024.9	1,974.8	50.12	40.399		
5,800.0	5,507.9	5,499.1	5,319.3	36.5	27.4	-138.13	1,050.3	820.9	2,047.1	1,996.1	50.93	40.193		
5,900.0	5,607.2	5,661.8	5,480.4	36.7	27.9	-138.18	1,068.1	835.1	2,063.7	2,012.1	51.58	40.007		
6,000.0	5,706.8	5,826.9	5,645.0	36.8	28.2	-138.27	1,078.8	843.6	2,074.6	2,022.5	52.08	39.838		
6,100.0	5,806.7	5,988.8	5,806.7	37.0	28.4	-138.39	1,082.1	846.2	2,079.7	2,027.3	52.40	39.689		
6,200.0	5,906.7	6,088.8	5,906.7	37.1	28.5	-18.07	1,082.1	846.2	2,080.8	2,028.2	52.59	39.566		
6,300.0	6,006.7	6,188.8	6,006.7	37.1	28.6	-18.07	1,082.1	846.2	2,080.8	2,028.0	52.80	39.412		
6,400.0	6,106.7	6,288.8	6,106.7	37.2	28.7	-18.07	1,082.1	846.2	2,080.8	2,027.8	53.00	39.258		
6,500.0	6,206.7	6,388.8	6,206.7	37.3	28.8	-18.07	1,082.1	846.2	2,080.8	2,027.6	53.21	39.103		
6,600.0	6,306.7	6,488.8	6,306.7	37.3	28.9	-18.07	1,082.1	846.2	2,080.8	2,027.4	53.43	38.946		
6,700.0	6,406.7	6,588.8	6,406.7	37.4	29.0	-18.07	1,082.1	846.2	2,080.8	2,027.2	53.64	38.789		
6,800.0	6,506.7	6,688.8	6,506.7	37.5	29.1	-18.07	1,082.1	846.2	2,080.8	2,027.0	53.86	38.631		
6,900.0	6,606.7	6,788.8	6,606.7	37.6	29.2	-18.07	1,082.1	846.2	2,080.8	2,026.7	54.09	38.472		
7,000.0	6,706.7	6,888.8	6,706.7	37.7	29.3	-18.07	1,082.1	846.2	2,080.8	2,026.5	54.31	38.313		
7,100.0	6,806.7	6,988.8	6,806.7	37.7	29.4	-18.07	1,082.1	846.2	2,080.8	2,026.3	54.54	38.153		
7,200.0	6,906.7	7,088.8	6,906.7	37.8	29.5	-18.07	1,082.1	846.2	2,080.8	2,026.1	54.77	37.992		
7,300.0	7,006.7	7,188.8	7,006.7	37.9	29.6	-18.07	1,082.1	846.2	2,080.8	2,025.8	55.00	37.831		
7,400.0	7,106.7	7,288.8	7,106.7	38.0	29.7	-18.07	1,082.1	846.2	2,080.8	2,025.6	55.24	37.669		
7,500.0	7,206.7	7,388.8	7,206.7	38.1	29.8	-18.07	1,082.1	846.2	2,080.8	2,025.3	55.48	37.507		
7,600.0	7,306.7	7,488.8	7,306.7	38.1	29.9	-18.07	1,082.1	846.2	2,080.8	2,025.1	55.72	37.345		
7,700.0	7,406.7	7,588.8	7,406.7	38.2	30.1	-18.07	1,082.1	846.2	2,080.8	2,024.9	55.96	37.182		
7,748.3	7,455.0	7,637.1	7,455.0	38.3	30.1	-18.07	1,082.1	846.2	2,080.8	2,024.7	56.08	37.104		

Company:	BAYSWATER EXPLORATION & PRODUCTION	Local Co-ordinate Reference:	Well Baldridge 1-1
Project:	SEC.36-T7N-R67W	TVD Reference:	WELL @ 4893.0ft (Original Well Elev)
Reference Site:	Baldridge & Schneider Pad Sec.36-T7N-R67W	MD Reference:	WELL @ 4893.0ft (Original Well Elev)
Site Error:	0.0ft	North Reference:	True
Reference Well:	Baldridge 1-1	Survey Calculation Method:	Minimum Curvature
Well Error:	0.0ft	Output errors are at	2.00 sigma
Reference Wellbore	Wellbore #1	Database:	Landmark
Reference Design:	Plan #1 (4-12-12)	Offset TVD Reference:	Offset Datum

Offset Design													Offset Site Error:	0.0 ft
Survey Program: 0-MWD													Offset Well Error:	0.0 ft
Reference														
Measured Depth (ft)	Vertical Depth (ft)	Measured Depth (ft)	Vertical Depth (ft)	Semi Major Axis Reference (ft)	Semi Major Axis Offset (ft)	Highside Toolface (°)	Offset Wellbore Centre +N/-S (ft)	Offset Wellbore Centre +E/-W (ft)	Distance Between Centres (ft)	Distance Between Ellipses (ft)	Minimum Separation (ft)	Separation Factor	Warning	
0.0	0.0	0.0	0.0	0.0	0.0	89.53	0.4	44.8	44.8					
100.0	100.0	100.0	100.0	0.1	0.1	89.53	0.4	44.8	44.8	44.5	0.22	199.145		
200.0	200.0	200.0	200.0	0.3	0.3	89.53	0.4	44.8	44.8	44.1	0.67	66.382		
300.0	300.0	300.0	300.0	0.5	0.6	-57.37	0.4	44.8	43.8	42.7	1.10	39.652		
400.0	399.8	399.8	399.8	0.8	0.8	-63.55	0.4	44.8	41.2	39.7	1.54	26.773		
500.0	499.5	499.5	499.5	1.0	1.0	-70.06	0.4	44.8	37.9	35.9	2.01	18.876		
600.0	598.8	598.8	598.8	1.3	1.2	-81.39	0.4	44.8	34.9	32.3	2.52	13.836		
646.1	644.4	644.4	644.4	1.4	1.3	-90.00	0.4	44.8	34.4	31.6	2.77	12.407 CC, ES		
700.0	697.6	697.6	697.6	1.6	1.5	-101.85	0.4	44.8	35.2	32.2	3.05	11.564 SF		
800.0	795.9	796.1	796.1	2.0	1.7	-121.70	0.0	46.3	42.4	38.8	3.53	12.004		
900.0	893.5	895.1	894.9	2.4	1.9	-134.06	-1.0	51.3	54.7	50.7	3.99	13.712		
1,000.0	990.3	994.5	993.9	2.9	2.1	-141.03	-2.7	59.6	69.7	65.2	4.47	15.594		
1,100.0	1,086.2	1,094.3	1,093.1	3.5	2.3	-144.97	-5.1	71.3	86.1	81.1	4.99	17.269		
1,200.0	1,181.1	1,194.7	1,192.2	4.1	2.6	-147.20	-8.2	86.5	103.5	98.0	5.56	18.623		
1,300.0	1,274.9	1,293.5	1,289.5	4.8	2.9	-149.00	-11.8	103.9	121.9	115.8	6.18	19.737		
1,400.0	1,368.5	1,391.6	1,385.9	5.5	3.3	-150.84	-15.4	121.4	140.8	134.0	6.82	20.649		
1,500.0	1,462.2	1,489.7	1,482.4	6.3	3.6	-152.24	-19.0	138.8	159.9	152.4	7.47	21.391		
1,600.0	1,555.8	1,587.9	1,578.9	7.0	4.0	-153.34	-22.5	156.2	179.0	170.8	8.13	22.003		
1,700.0	1,649.4	1,686.0	1,675.4	7.7	4.4	-154.23	-26.1	173.7	198.1	189.3	8.80	22.520		
1,800.0	1,743.1	1,784.1	1,771.9	8.5	4.7	-154.96	-29.7	191.1	217.3	207.8	9.47	22.951		
1,900.0	1,836.7	1,882.2	1,868.3	9.2	5.1	-155.57	-33.3	208.5	236.5	226.4	10.14	23.323		
2,000.0	1,930.3	1,980.3	1,964.8	10.0	5.5	-156.09	-36.9	226.0	255.7	244.9	10.82	23.645		
2,100.0	2,023.9	2,078.4	2,061.3	10.7	5.9	-156.54	-40.5	243.4	275.0	263.5	11.49	23.926		
2,200.0	2,117.6	2,176.5	2,157.8	11.5	6.3	-156.93	-44.0	260.8	294.3	282.1	12.17	24.174		
2,300.0	2,211.2	2,274.6	2,254.3	12.2	6.7	-157.27	-47.6	278.2	313.5	300.7	12.85	24.393		
2,400.0	2,304.8	2,372.7	2,350.7	13.0	7.1	-157.57	-51.2	295.7	332.8	319.3	13.54	24.588		
2,500.0	2,398.5	2,470.8	2,447.2	13.7	7.5	-157.84	-54.8	313.1	352.1	337.9	14.22	24.764		
2,600.0	2,492.1	2,568.9	2,543.7	14.5	7.9	-158.08	-58.4	330.5	371.4	356.5	14.90	24.922		
2,700.0	2,585.7	2,667.0	2,640.2	15.2	8.3	-158.30	-61.9	348.0	390.7	375.1	15.59	25.065		
2,800.0	2,679.3	2,765.2	2,736.7	16.0	8.7	-158.50	-65.5	365.4	410.0	393.8	16.27	25.195		
2,900.0	2,773.0	2,863.3	2,833.1	16.7	9.1	-158.68	-69.1	382.8	429.3	412.4	16.96	25.315		
3,000.0	2,866.6	2,961.4	2,929.6	17.5	9.5	-158.84	-72.7	400.3	448.7	431.0	17.65	25.424		
3,100.0	2,960.2	3,059.5	3,026.1	18.2	9.9	-158.99	-76.3	417.7	468.0	449.7	18.33	25.524		
3,200.0	3,053.8	3,157.6	3,122.6	19.0	10.3	-159.13	-79.9	435.1	487.3	468.3	19.02	25.617		
3,300.0	3,147.5	3,255.7	3,219.1	19.7	10.7	-159.26	-83.4	452.6	506.6	486.9	19.71	25.703		
3,400.0	3,241.1	3,353.8	3,315.6	20.5	11.1	-159.37	-87.0	470.0	526.0	505.6	20.40	25.783		
3,500.0	3,334.7	3,451.9	3,412.0	21.2	11.5	-159.48	-90.6	487.4	545.3	524.2	21.09	25.857		
3,600.0	3,428.4	3,550.0	3,508.5	22.0	11.9	-159.59	-94.2	504.9	564.6	542.9	21.78	25.927		
3,700.0	3,522.0	3,648.1	3,605.0	22.7	12.3	-159.68	-97.8	522.3	584.0	561.5	22.47	25.991		
3,800.0	3,615.6	3,746.2	3,701.5	23.5	12.7	-159.77	-101.4	539.7	603.3	580.2	23.16	26.052		
3,900.0	3,709.2	3,844.3	3,798.0	24.2	13.1	-159.85	-104.9	557.2	622.7	598.8	23.85	26.109		
4,000.0	3,802.9	3,942.5	3,894.4	25.0	13.5	-159.93	-108.5	574.6	642.0	617.5	24.54	26.163		
4,100.0	3,896.5	4,040.6	3,990.9	25.8	13.9	-160.01	-112.1	592.0	661.3	636.1	25.23	26.213		
4,200.0	3,990.1	4,138.7	4,087.4	26.5	14.3	-160.08	-115.7	609.5	680.7	654.8	25.92	26.261		
4,300.0	4,083.8	4,236.8	4,183.9	27.3	14.7	-160.14	-119.3	626.9	700.0	673.4	26.61	26.306		
4,400.0	4,177.4	4,334.9	4,280.4	28.0	15.2	-160.21	-122.9	644.3	719.4	692.1	27.30	26.348		
4,500.0	4,271.0	4,433.0	4,376.8	28.8	15.6	-160.27	-126.4	661.8	738.7	710.7	27.99	26.389		
4,600.0	4,364.6	4,531.1	4,473.3	29.5	16.0	-160.32	-130.0	679.2	758.1	729.4	28.68	26.427		
4,700.0	4,458.3	4,629.2	4,569.8	30.3	16.4	-160.38	-133.6	696.6	777.4	748.0	29.38	26.464		
4,800.0	4,551.9	4,727.3	4,666.3	31.0	16.8	-160.43	-137.2	714.1	796.7	766.7	30.07	26.498		
4,900.0	4,645.5	4,825.4	4,762.8	31.8	17.2	-160.48	-140.8	731.5	816.1	785.3	30.76	26.531		

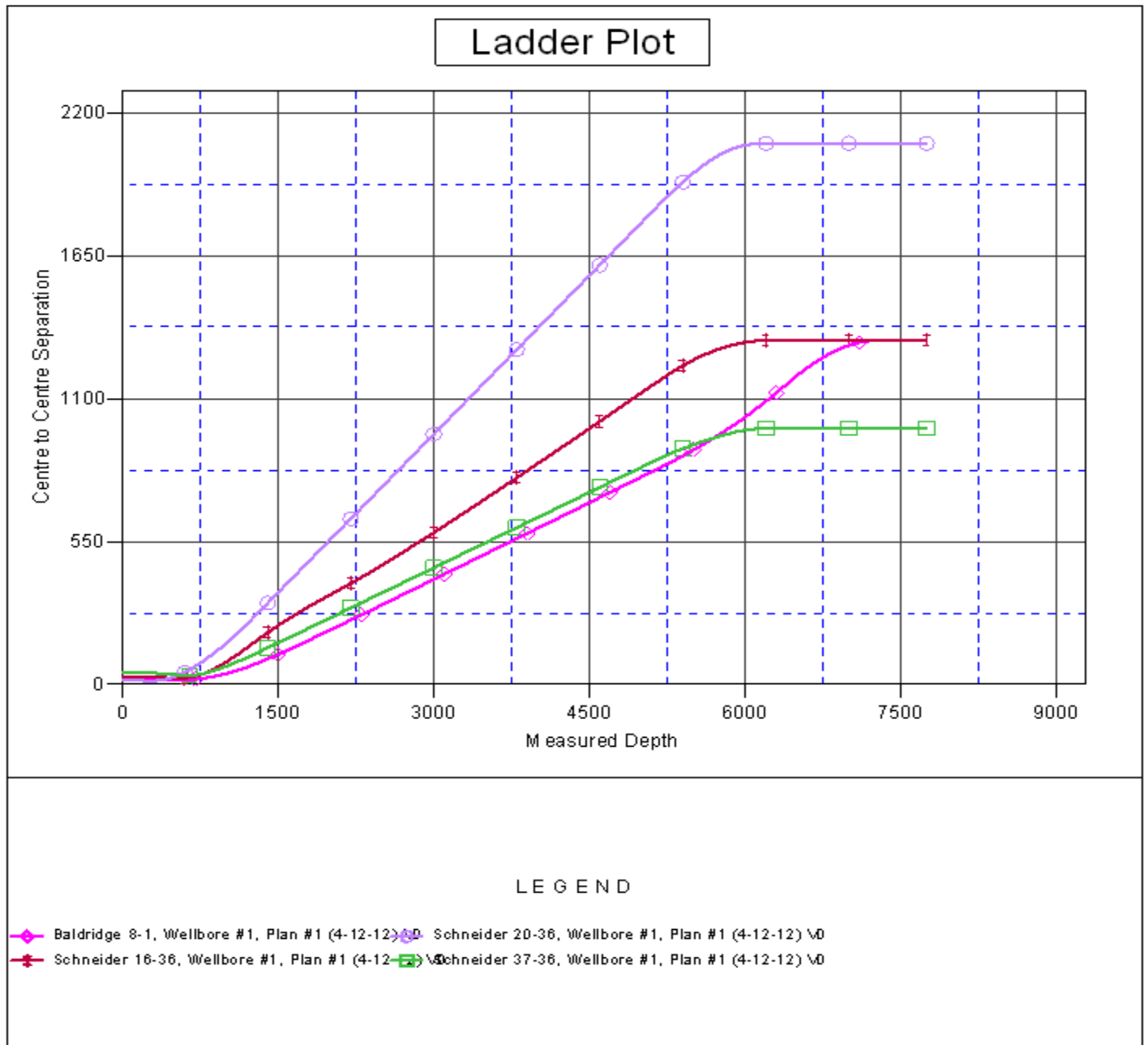
CC - Min centre to center distance or convergent point, SF - min separation factor, ES - min ellipse separation

Company:	BAYSWATER EXPLORATION & PRODUCTION	Local Co-ordinate Reference:	Well Baldridge 1-1
Project:	SEC.36-T7N-R67W	TVD Reference:	WELL @ 4893.0ft (Original Well Elev)
Reference Site:	Baldrige & Schneider Pad Sec.36-T7N-R67W	MD Reference:	WELL @ 4893.0ft (Original Well Elev)
Site Error:	0.0ft	North Reference:	True
Reference Well:	Baldrige 1-1	Survey Calculation Method:	Minimum Curvature
Well Error:	0.0ft	Output errors are at	2.00 sigma
Reference Wellbore	Wellbore #1	Database:	Landmark
Reference Design:	Plan #1 (4-12-12)	Offset TVD Reference:	Offset Datum

Offset Design														Offset Site Error:	0.0 ft
Baldrige & Schneider Pad Sec.36-T7N-R67W - Schneider 37-36 - Wellbore #1 - Plan #1 (4-12-12)														Offset Well Error:	0.0 ft
Survey Program: 0-MWD															
Reference		Offset		Semi Major Axis			Distance								
Measured Depth (ft)	Vertical Depth (ft)	Measured Depth (ft)	Vertical Depth (ft)	Reference (ft)	Offset (ft)	Highside Toolface (°)	Offset Wellbore Centre +N/-S (ft)	+E/-W (ft)	Between Centres (ft)	Between Ellipses (ft)	Minimum Separation (ft)	Separation Factor	Warning		
5,000.0	4,739.2	4,923.5	4,859.2	32.5	17.6	-160.52	-144.4	748.9	835.4	804.0	31.45	26.563			
5,100.0	4,832.8	5,021.6	4,955.7	33.3	18.0	-160.57	-147.9	766.4	854.8	822.6	32.14	26.593			
5,200.0	4,926.5	5,119.8	5,052.2	34.0	18.4	-160.65	-151.5	783.8	873.9	841.1	32.84	26.608			
5,300.0	5,021.1	5,200.0	5,131.2	34.6	18.7	-160.77	-154.4	797.6	891.1	857.6	33.45	26.642			
5,400.0	5,116.8	5,283.6	5,213.8	35.0	18.9	-160.90	-156.9	809.8	907.0	873.1	33.96	26.710			
5,500.0	5,213.4	5,362.5	5,292.1	35.5	19.1	-161.05	-158.8	819.2	921.9	887.5	34.39	26.808			
5,600.0	5,310.9	5,441.2	5,370.5	35.9	19.3	-161.21	-160.3	826.4	935.7	900.9	34.75	26.925			
5,700.0	5,409.1	5,519.8	5,449.0	36.2	19.4	-161.39	-161.3	831.5	948.3	913.3	35.04	27.062			
5,800.0	5,507.9	5,600.0	5,529.1	36.5	19.6	-161.59	-162.0	834.6	959.9	924.6	35.27	27.218			
5,900.0	5,607.2	5,678.1	5,607.2	36.7	19.7	-161.80	-162.1	835.4	970.3	934.9	35.42	27.394			
6,000.0	5,706.8	5,777.8	5,706.8	36.8	19.8	-162.00	-162.1	835.4	978.3	942.8	35.56	27.512			
6,100.0	5,806.7	5,877.6	5,806.7	37.0	19.9	-162.12	-162.1	835.4	983.1	947.4	35.69	27.548			
6,200.0	5,906.7	5,977.6	5,906.7	37.1	20.1	-41.79	-162.1	835.4	984.6	948.7	35.81	27.490			
6,300.0	6,006.7	6,077.6	6,006.7	37.1	20.2	-41.79	-162.1	835.4	984.6	948.5	36.10	27.273			
6,400.0	6,106.7	6,177.6	6,106.7	37.2	20.3	-41.79	-162.1	835.4	984.6	948.2	36.39	27.056			
6,500.0	6,206.7	6,277.6	6,206.7	37.3	20.5	-41.79	-162.1	835.4	984.6	947.9	36.68	26.840			
6,600.0	6,306.7	6,377.6	6,306.7	37.3	20.6	-41.79	-162.1	835.4	984.6	947.6	36.98	26.625			
6,700.0	6,406.7	6,477.6	6,406.7	37.4	20.7	-41.79	-162.1	835.4	984.6	947.3	37.28	26.412			
6,800.0	6,506.7	6,577.6	6,506.7	37.5	20.9	-41.79	-162.1	835.4	984.6	947.0	37.58	26.200			
6,900.0	6,606.7	6,677.6	6,606.7	37.6	21.0	-41.79	-162.1	835.4	984.6	946.7	37.88	25.990			
7,000.0	6,706.7	6,777.6	6,706.7	37.7	21.2	-41.79	-162.1	835.4	984.6	946.4	38.19	25.781			
7,100.0	6,806.7	6,877.6	6,806.7	37.7	21.3	-41.79	-162.1	835.4	984.6	946.1	38.50	25.573			
7,200.0	6,906.7	6,977.6	6,906.7	37.8	21.5	-41.79	-162.1	835.4	984.6	945.7	38.81	25.367			
7,300.0	7,006.7	7,077.6	7,006.7	37.9	21.6	-41.79	-162.1	835.4	984.6	945.4	39.13	25.163			
7,400.0	7,106.7	7,177.6	7,106.7	38.0	21.8	-41.79	-162.1	835.4	984.6	945.1	39.44	24.960			
7,500.0	7,206.7	7,277.6	7,206.7	38.1	21.9	-41.79	-162.1	835.4	984.6	944.8	39.77	24.759			
7,600.0	7,306.7	7,377.6	7,306.7	38.1	22.1	-41.79	-162.1	835.4	984.6	944.5	40.09	24.560			
7,700.0	7,406.7	7,477.6	7,406.7	38.2	22.2	-41.79	-162.1	835.4	984.6	944.1	40.41	24.362			
7,748.3	7,455.0	7,525.9	7,455.0	38.3	22.3	-41.79	-162.1	835.4	984.6	944.0	40.57	24.268			

Company:	BAYSWATER EXPLORATION & PRODUCTION	Local Co-ordinate Reference:	Well Baldridge 1-1
Project:	SEC.36-T7N-R67W	TVD Reference:	WELL @ 4893.0ft (Original Well Elev)
Reference Site:	Baldridge & Schneider Pad Sec.36-T7N-R67W	MD Reference:	WELL @ 4893.0ft (Original Well Elev)
Site Error:	0.0ft	North Reference:	True
Reference Well:	Baldridge 1-1	Survey Calculation Method:	Minimum Curvature
Well Error:	0.0ft	Output errors are at	2.00 sigma
Reference Wellbore	Wellbore #1	Database:	Landmark
Reference Design:	Plan #1 (4-12-12)	Offset TVD Reference:	Offset Datum

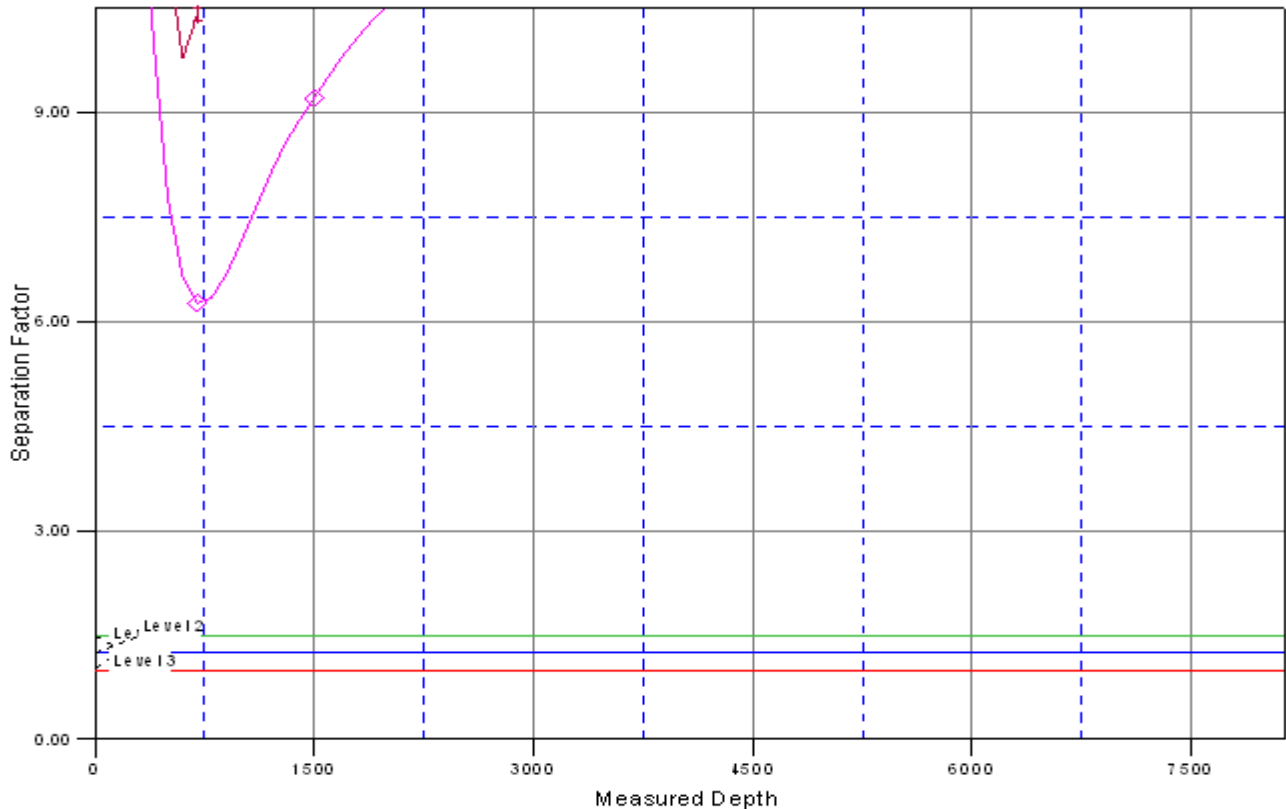
Reference Depths are relative to WELL @ 4893.0ft (Original Well Elev) Coordinates are relative to: Baldridge 1-1
 Offset Depths are relative to Offset Datum Coordinate System is US State Plane 1983, Colorado Northern Zone
 Central Meridian is -105.500000 ° Grid Convergence at Surface is: 0.43°



Company:	BAYSWATER EXPLORATION & PRODUCTION	Local Co-ordinate Reference:	Well Baldridge 1-1
Project:	SEC.36-T7N-R67W	TVD Reference:	WELL @ 4893.0ft (Original Well Elev)
Reference Site:	Baldridge & Schneider Pad Sec.36-T7N-R67W	MD Reference:	WELL @ 4893.0ft (Original Well Elev)
Site Error:	0.0ft	North Reference:	True
Reference Well:	Baldridge 1-1	Survey Calculation Method:	Minimum Curvature
Well Error:	0.0ft	Output errors are at	2.00 sigma
Reference Wellbore	Wellbore #1	Database:	Landmark
Reference Design:	Plan #1 (4-12-12)	Offset TVD Reference:	Offset Datum

Reference Depths are relative to WELL @ 4893.0ft (Original Well Elev) Coordinates are relative to: Baldridge 1-1
 Offset Depths are relative to Offset Datum Coordinate System is US State Plane 1983, Colorado Northern Zone
 Central Meridian is -105.500000 ° Grid Convergence at Surface is: 0.43°

Separation Factor Plot



LEGEND

- ◆ Baldridge 8-1, Wellbore #1, Plan #1 (4-12-12) \0
- ◆ Schneider 20-36, Wellbore #1, Plan #1 (4-12-12) \0
- ◆ Schneider 16-36, Wellbore #1, Plan #1 (4-12-12) \0
- ◆ Schneider 37-36, Wellbore #1, Plan #1 (4-12-12) \0