

HALLIBURTON

Cementing Job Summary

The Road to Excellence Starts with Safety

Sold To #: 304535	Ship To #: 2313102	Quote #:	Sales Order #: 9346515
Customer: PDC ENERGY EBUS		Customer Rep:	
Well Name: Kreps Trust	Well #: 44-6	API/UWI #: 05-123-21722	
Field: Wattenberg	City (SAP): KERSEY	County/Parish: Weld	State: Colorado
Job Purpose: Recement Service			
Well Type: Development Well	Job Type: Recement Service		
Sales Person: FLING, MATTHEW	Svc Supervisor: ROSALES, MATTHEW	MBU ID Emp #: 392095	

Job Personnel							
HES Emp Name	Exp Hrs	Emp #	HES Emp Name	Exp Hrs	Emp #	HES Emp Name	Exp Hrs
BANUELOS, GUADALUPE	4.0	372277	CHAVEZ, JEROME	4.0	458298	JEWELL, WILLIAM	4.0
ROSALES, MATTHEW, John	4.0	392095				Uriis	503358

Equipment							
HES Unit #	Distance-1 way	HES Unit #	Distance-1 way	HES Unit #	Distance-1 way	HES Unit #	Distance-1 way
10246780C	45 mile	11019824C	45 mile	11360865C	45 mile	11542778	45 mile

Job Hours							
Date	On Location Hours	Operating Hours	Date	On Location Hours	Operating Hours	Date	On Location Hours
3/09/12	4	2.5					
TOTAL			Total is the sum of each column separately				

Job Times							
Formation Name	Top	Bottom	Called Out	Date	Time	Time Zone	
Formation Depth (MD)				09 - Mar - 2012	04:00	MST	
Form Type		BHST	On Location	09 - Mar - 2012	07:30	MST	
Job depth MD	3150. ft	Job Depth TVD	Job Started	09 - Mar - 2012	08:37	MST	
Water Depth		Wk Ht Above Floor	Job Completed	09 - Mar - 2012	10:30	MST	
Perforation Depth (MD)	From	To	Departed Loc	09 - Mar - 2012	11:30	MST	

Well Data									
Description	New / Used	Max pressure psig	Size in	ID in	Weight lbn/ft	Thread	Grade	Top MD ft	Bottom MD ft
Open Hole				12.			J-55	449.	2500.
Production Casing	Used		4.5	4.052	10.5		J-55		8450.
Surface Casing	Used		8.625	8.097	24.		J-55		449.
TUBING	Unknown		1.25	.671	3.02				3150.

Tools and Accessories									
Type	Size	Qty	Make	Depth	Type	Size	Qty	Make	Depth
Guide Shoe					Packer			Top Plug	
Float Shoe					Bridge Plug			Bottom Plug	
Float Collar					Retainer			SSR plug set	
Insert Float								Plug Container	
Stage Tool								Centralizers	

Miscellaneous Materials									
Gelling Agt		Conc		Surfactant		Conc		Acid Type	
Treatment Fld		Conc		Inhibitor		Conc		Sand Type	

Fluid Data									
Stage/Plug #: 1									

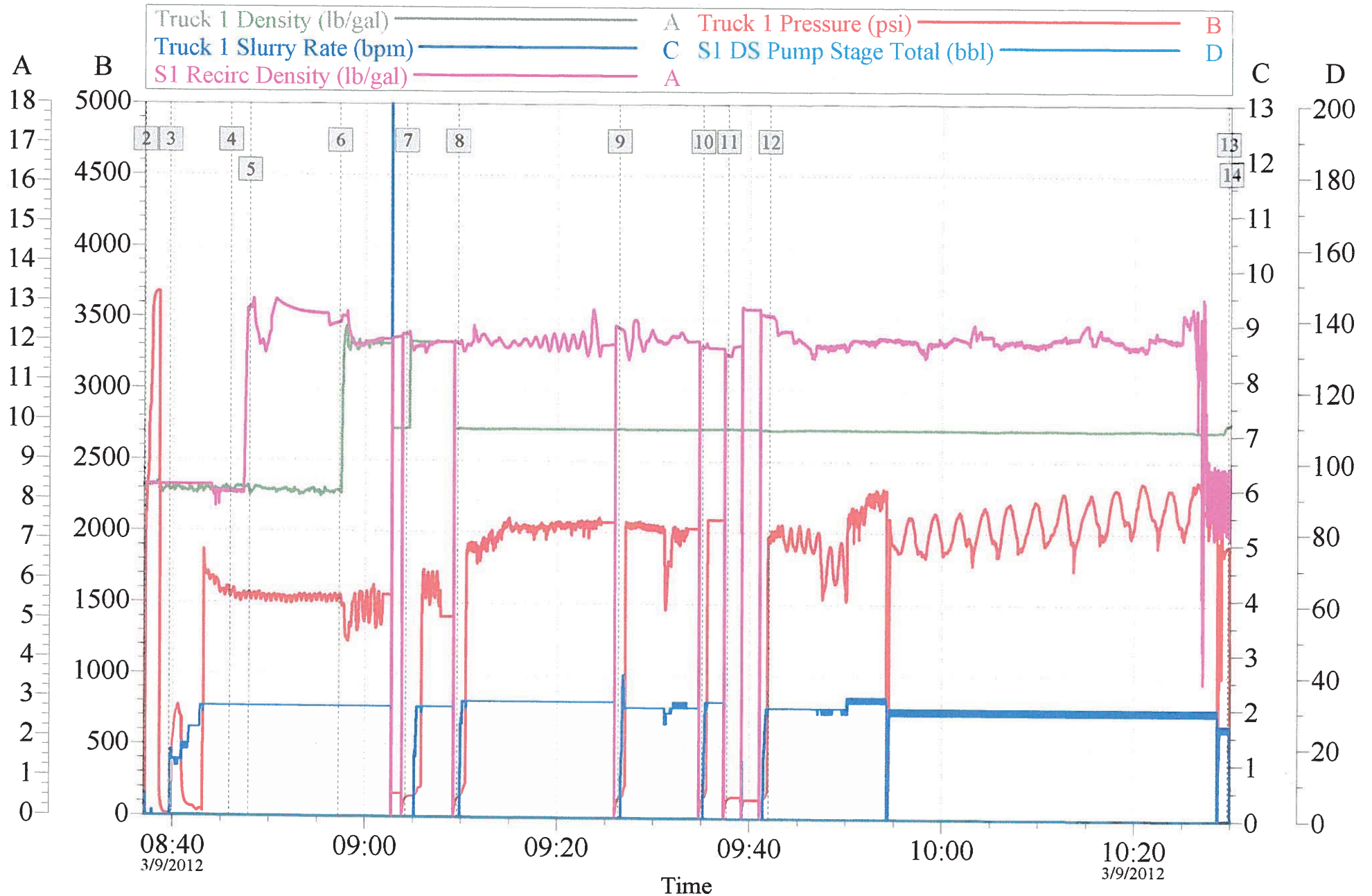
HALLIBURTON

Cementing Job Summary

Fluid #	Stage Type	Fluid Name	Qty	Qty uom	Mixing Density lbm/gal	Yield ft ³ /sk	Mix Fluid Gal/sk	Rate bbl/min	Total Mix Fluid Gal/sk
1	ClayWeb Water Spacer		10.00	bbl	8.33	.0	.0	2.0	
2	MUD FLUSH III	MUD FLUSH III - SBM (528788)	12.00	bbl	8.4	.0	.0	2.0	
3	ClayWeb Water Spacer		10.00	bbl	8.33	.0	.0	2.0	
		59.525 gal/Mgal							
		CLA-WEB - TOTE (101985045)							
4	Varicem 12#	VARICEM (TM) CEMENT (452009)	460.0	sacks	12.	2.18	12.34	2.0	12.34
		12.34 Gal							
		FRESH WATER							
Calculated Values		Pressures	Volumes						
Displacement		Shut In: Instant	Lost Returns		Cement Slurry	179	Pad		34
Top Of Cement		5 Min	Cement Returns	12BBL	Actual Displacement	1.5	Treatment		
Frac Gradient		15 Min	Spacers		Load and Breakdown		Total Job		214.5
Rates									
Circulating		Mixing		Displacement		Avg. Job			
Cement Left In Pipe	Amount	0 ft	Reason	Shoe Joint					
Frac Ring # 1 @	ID	Frac ring # 2 @	ID	Frac Ring # 3 @	ID	Frac Ring # 4 @	ID	ID	ID
The Information Stated Herein Is Correct				Customer Representative Signature					

PDC - Kreps Trust 44-6

Annular Fill



Customer: PDC
 Well Description: Kreps Trust 44-6
 Halliburton Service Supervisor: Matthew J. Rosales

Job Date: 09-Mar-2012
 UWI: 05-123-21722-00
 Halliburton Operator: Jerome Chavez

Sales Order #: 9346515
 PDC Customer Rep. Chad Sailors

OptiCem v6.4.10
 09-Mar-12 10:44