

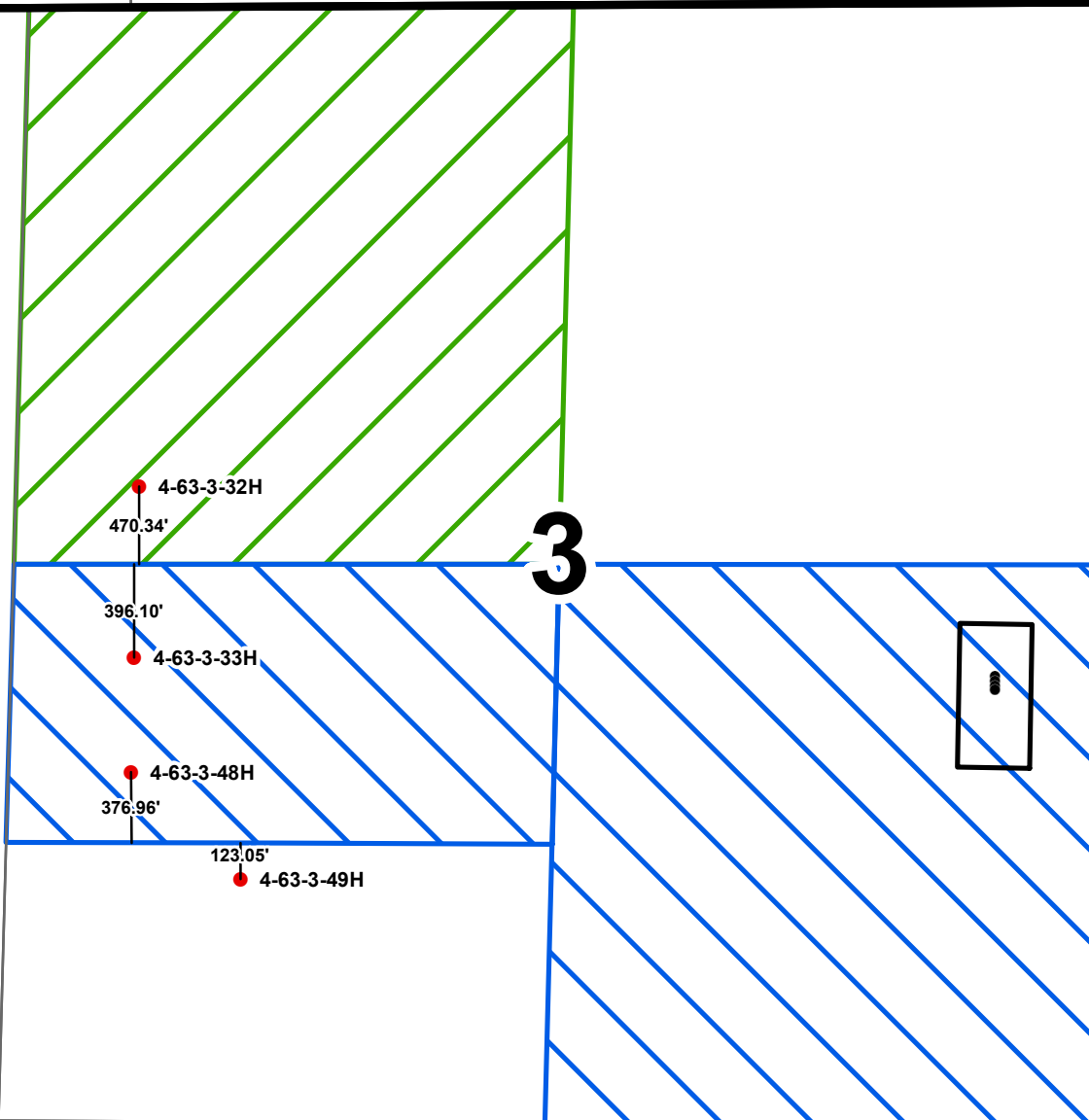
5N/63W

4N/63W

**70 Ranch 5-63-22-58H  
Lease Boundary Map**

CARRUTHERS, ALEEN M. (CO13536)  
T.4N., R.63 W. 6th P.M  
Sec 3; NW  
168.16 Acres

CHAMPLIN PETROLEUM CO. (CO13597)  
T.4N., R.63 W. 6th P.M  
Sec 3; SE, N/2SW  
T.5N., R.63 W. 6th P.M  
Sec 33; SW  
400 Acres



CO13536 70 RANCH 4-63-3 PAD  
 CO13597 70 RANCH 4-63-3 BHLs



**Lease Bondary Map**

70 Ranch 6-63-3 Pad  
NESE, Section 3, T4N R63W  
Weld County, Colorado