

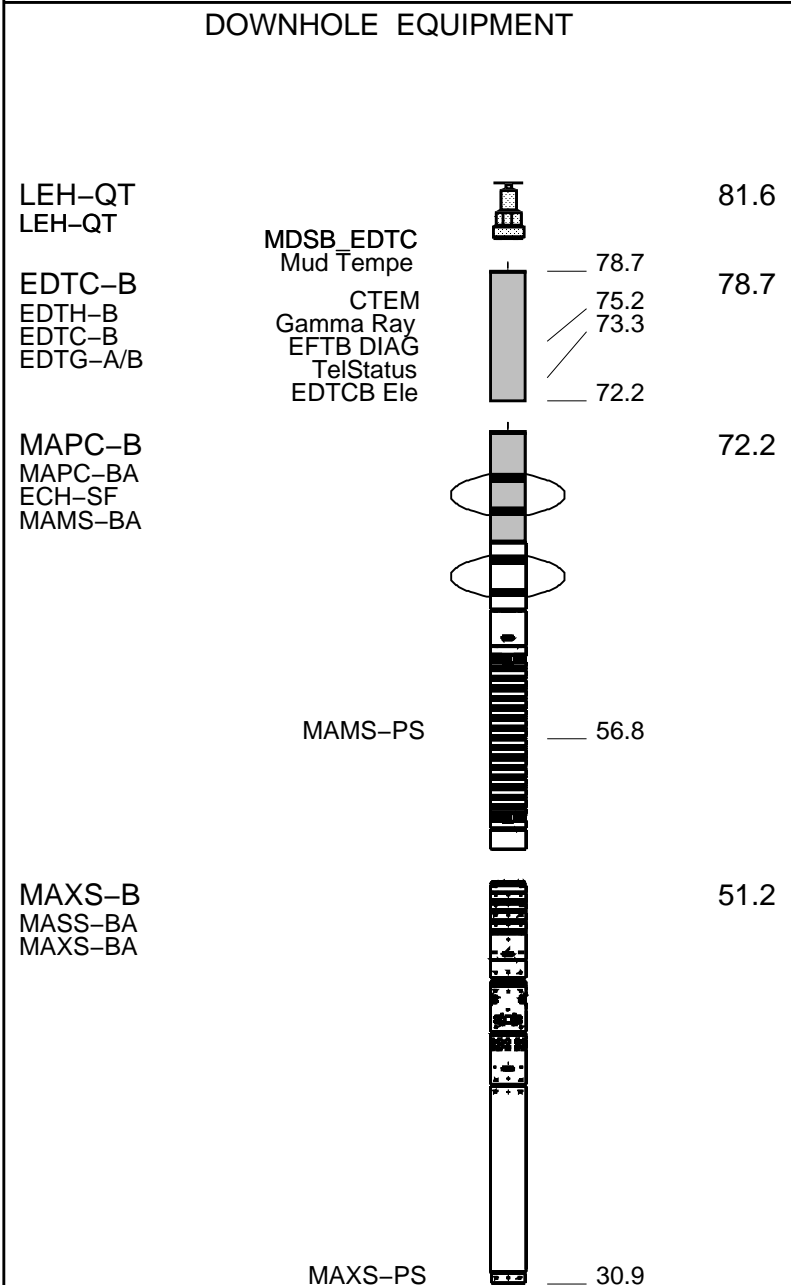
OTHER SERVICES1	OTHER SERVICES2
OS1: MSIP	OS1:
OS2: FMI	OS2:
OS3:	OS3:
OS4:	OS4:
OS5:	OS5:
REMARKS: RUN NUMBER 1	REMARKS: RUN NUMBER 2
This is the first run in hole	
Toolstring run as per tool sketch	
Matrix: Sandstone (2.65 g/cc) run over the repeat pass	
Limestone (2.71 g/cc) run over a second repeat pass and the main pass	

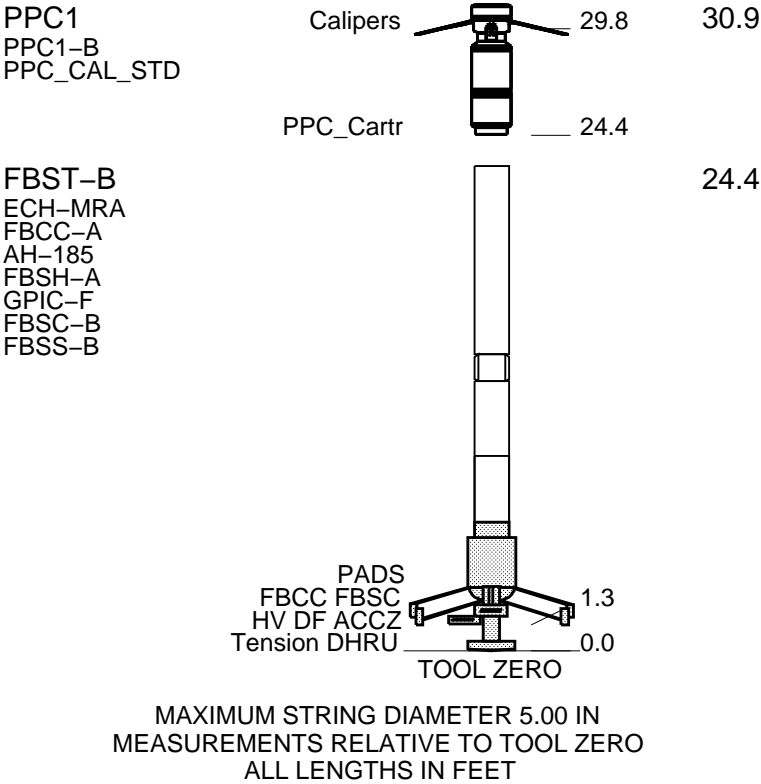
Rig: Black Gold 69	
Crew: Derrick Hunter, Matt Roche	

RUN 1			RUN 2		
SERVICE ORDER #:		BFN8-00'61	SERVICE ORDER #:		
PROGRAM VERSION:		19C0-187	PROGRAM VERSION:		
FLUID LEVEL:		300 ft	FLUID LEVEL:		
LOGGED INTERVAL	START	STOP	LOGGED INTERVAL	START	STOP

EQUIPMENT DESCRIPTION					
RUN 1			RUN 2		

SURFACE EQUIPMENT
 WITM (EDTS)-A





Output DLIS Files

DEFAULT AIT_TLD_MCFL_CNL_016LUP FN:15 PRODUCER 20-Mar-2012 06:47 5928.0 FT 338.5 FT

Integrated Hole/Cement Volume Summary

Hole Volume = 2350.66 F3
Cement Volume = 1447.82 F3 (assuming 5.50 IN casing O.D.)
Computed from 5907.0 FT to 435.0 FT using data channel(s) HCAL

OP System Version: 19C0-187

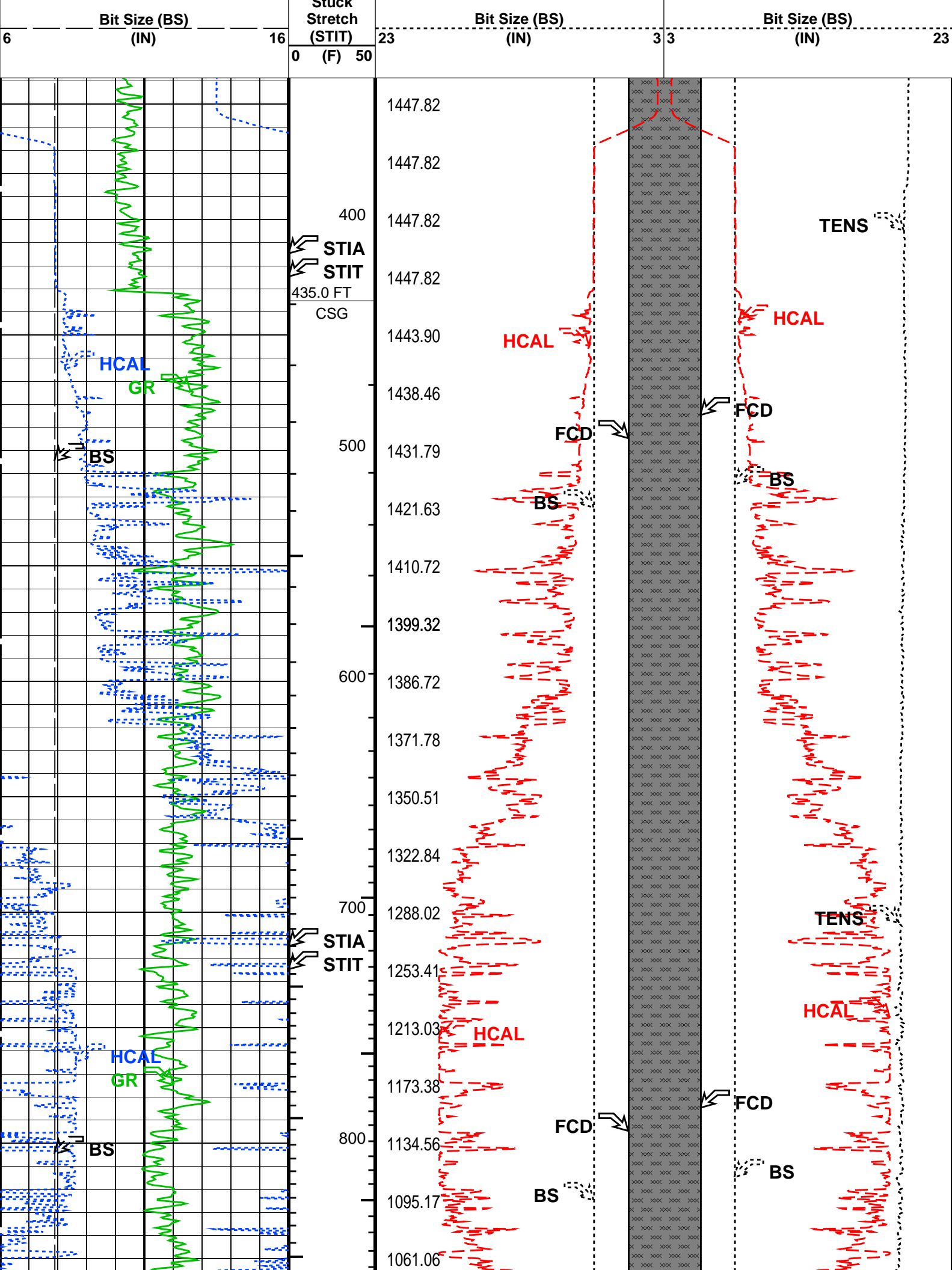
AIT-M 19C0-187 HILTH-FTB 19C0-187
DTC-H 19C0-187

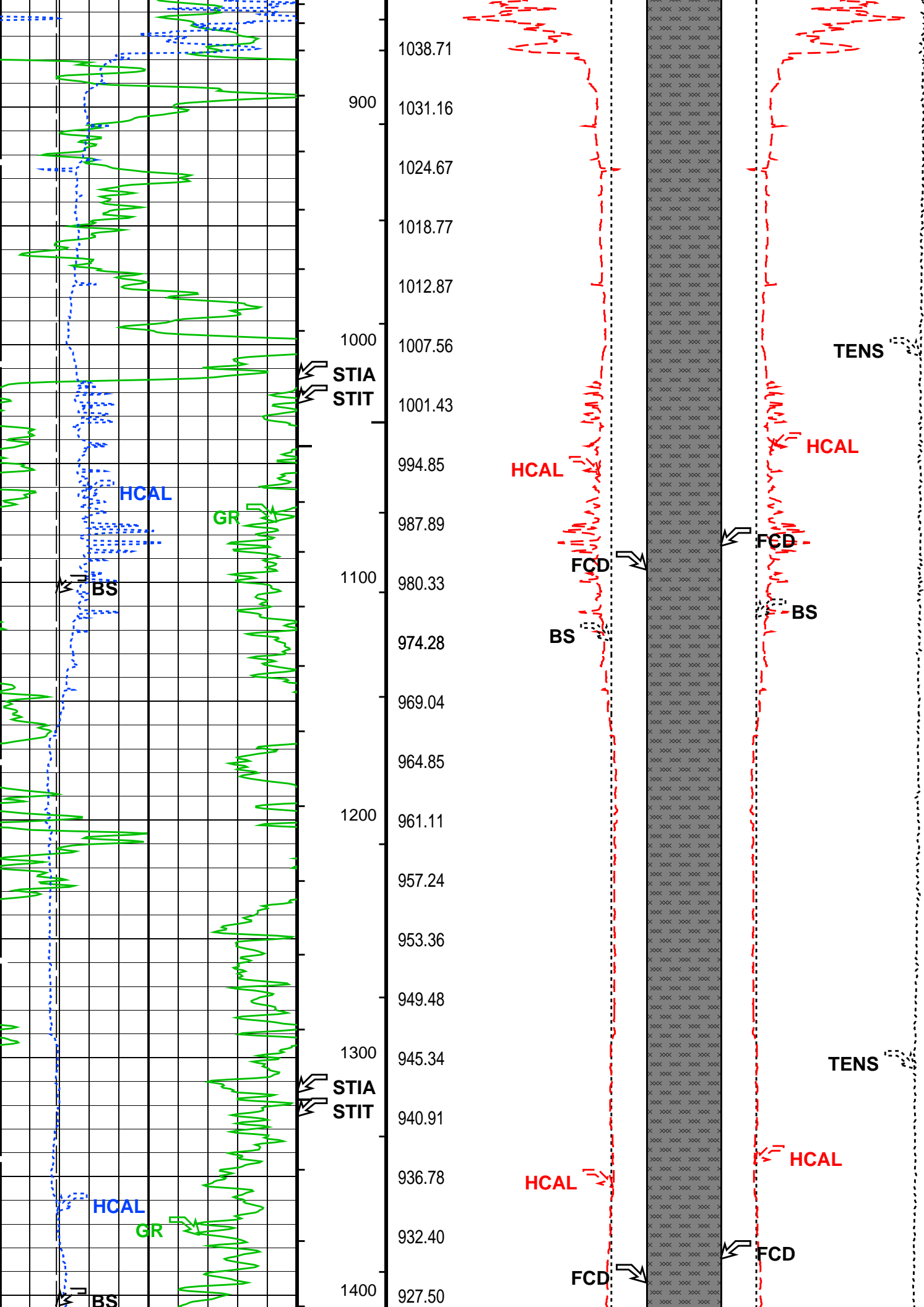
PIP SUMMARY

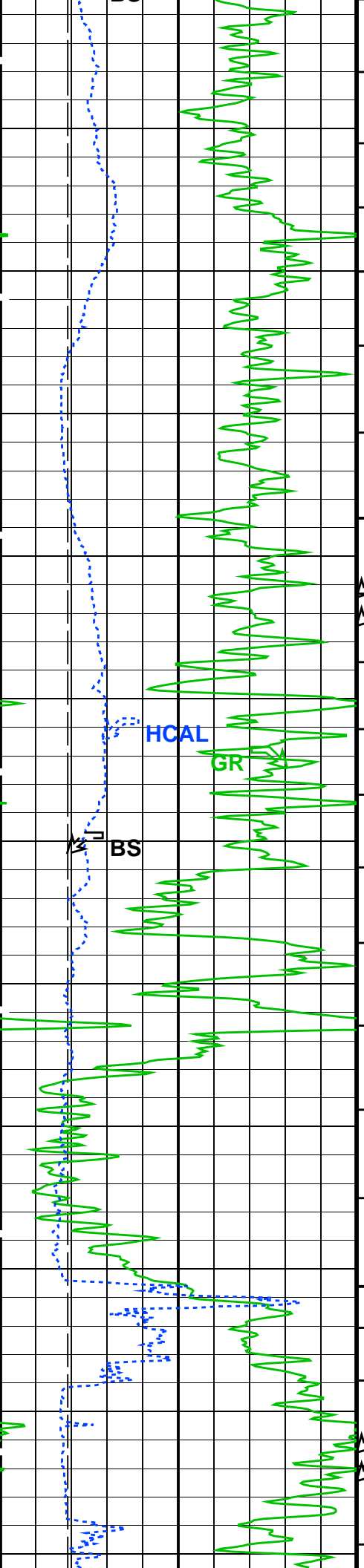
- └ Integrated Hole Volume Minor Pip Every 10 F3
- └ Integrated Hole Volume Major Pip Every 100 F3
 - └ Integrated Cement Volume Minor Pip Every 10 F3
 - └ Integrated Cement Volume Major Pip Every 100 F3

Time Mark Every 60 S

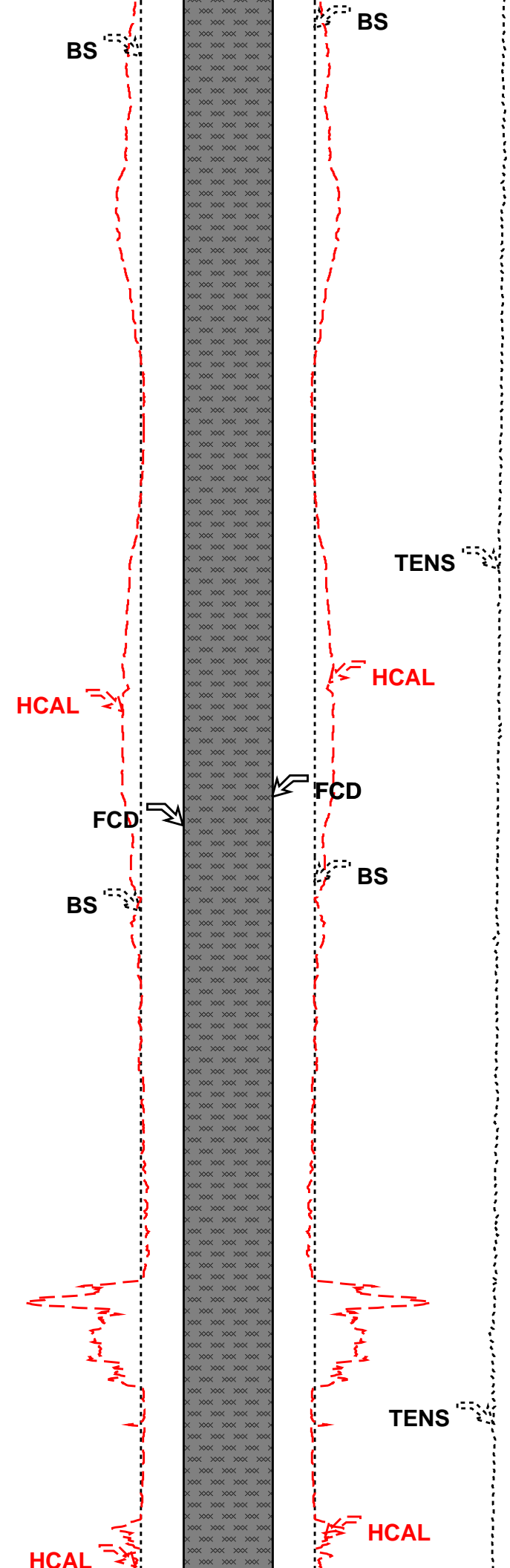
		FCD2 – FCD3 From FCD2 to FCD3			
		Cement Volume (ICV) (F3)		Tension (TENS) (LBF)	0
HILT Caliper (HCAL) (IN)		23	3 3	HILT Caliper (HCAL) (IN)	23
Gamma Ray (GR) (GAPI)		23	FCD2 (FCD) (IN)	FCD3 (FCD) (IN)	23

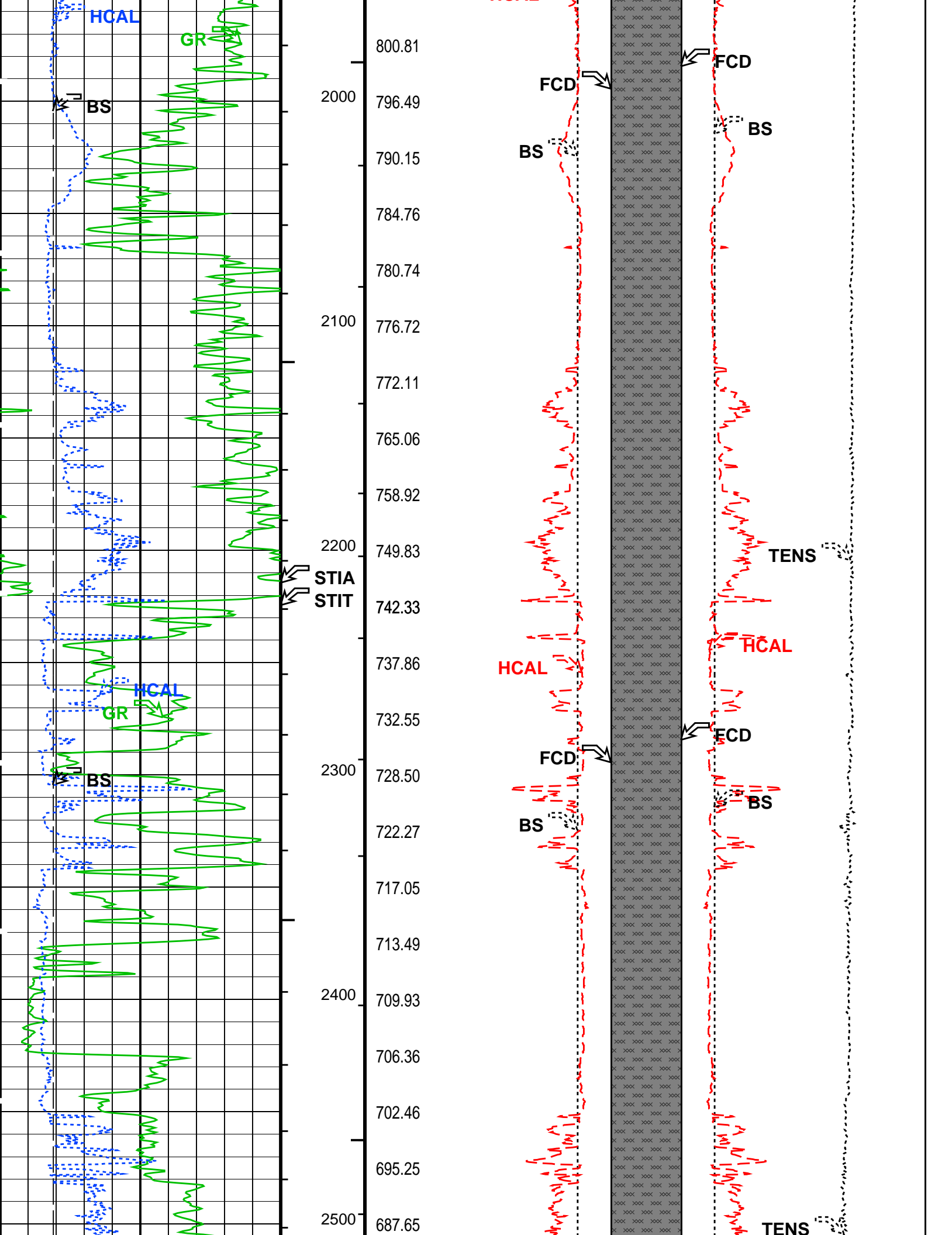


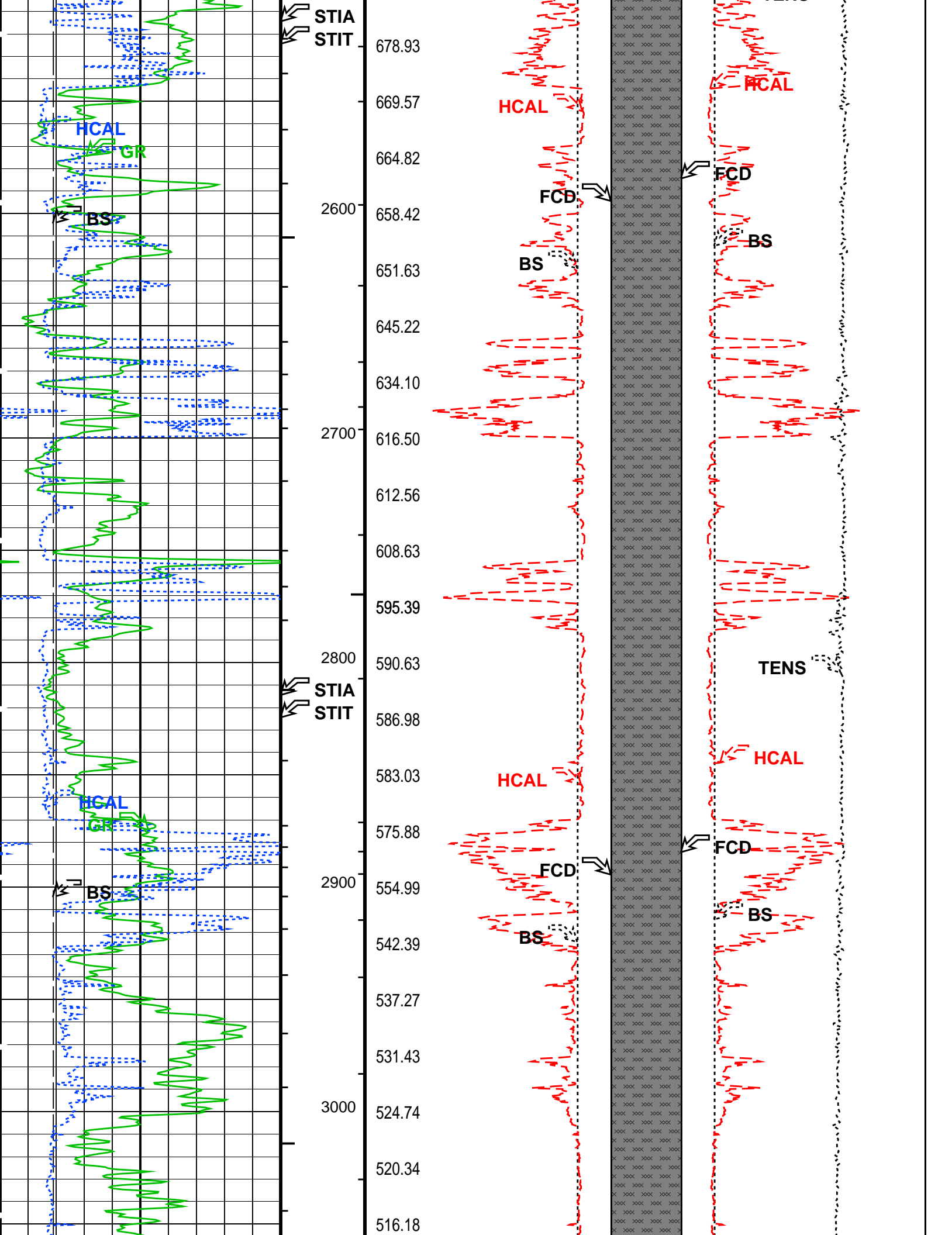


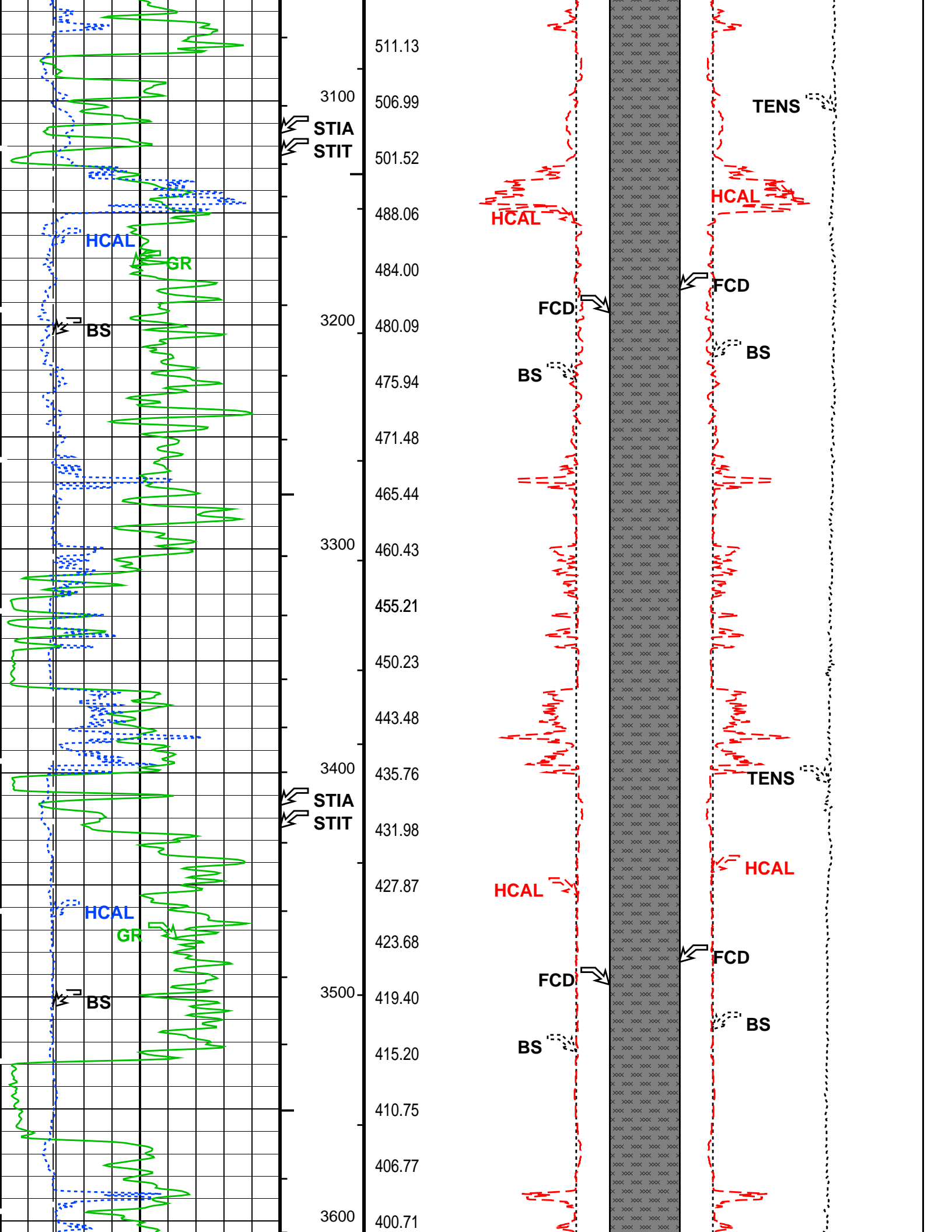


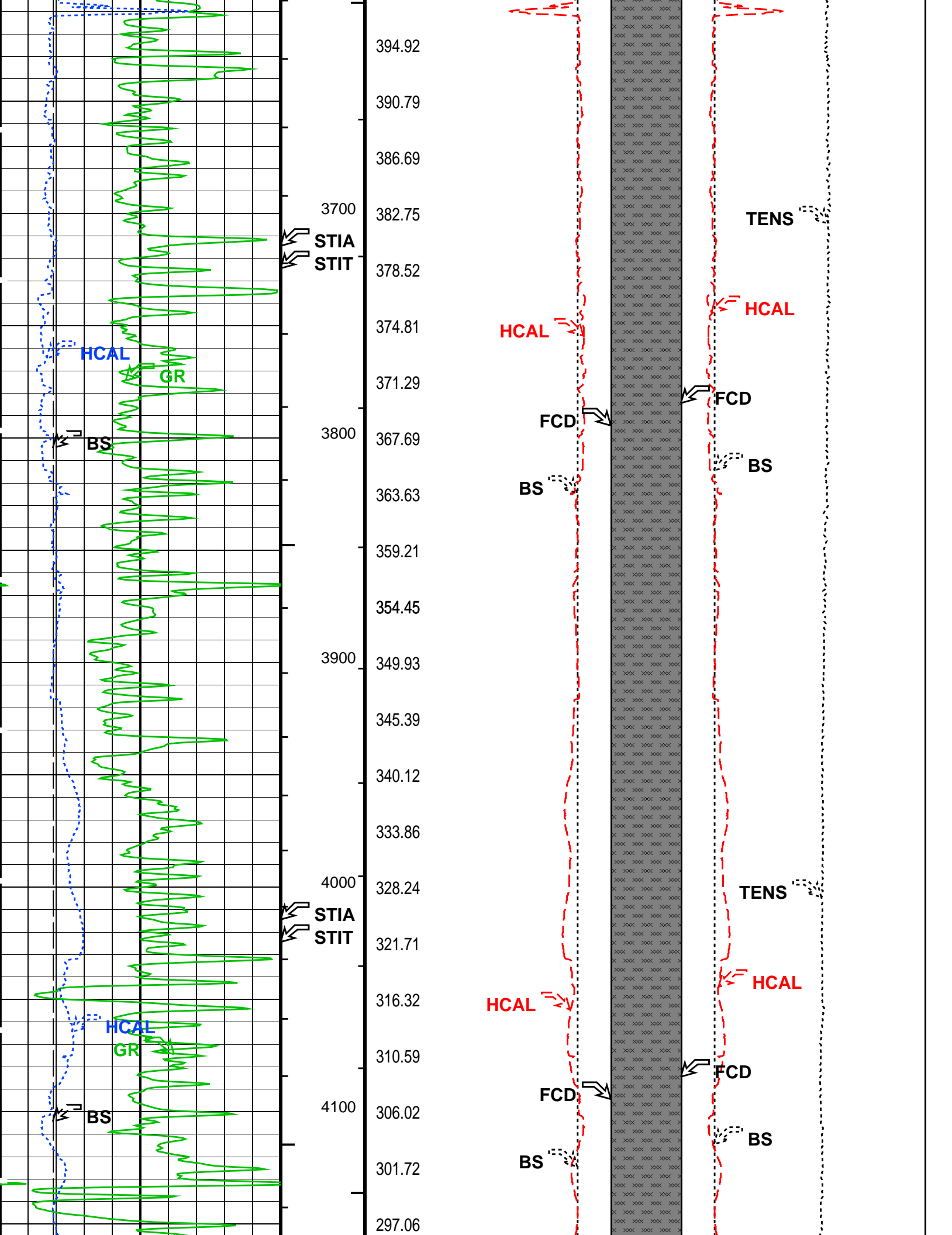
921.95
916.01
909.22
1500 902.21
896.91
892.83
888.72
1600 883.83
STIA
STIT 877.89
871.44
864.74
1700 858.69
853.46
848.58
844.18
1800 840.03
836.12
832.39
821.01
1900 814.69
STIA
STIT 810.55
805.34

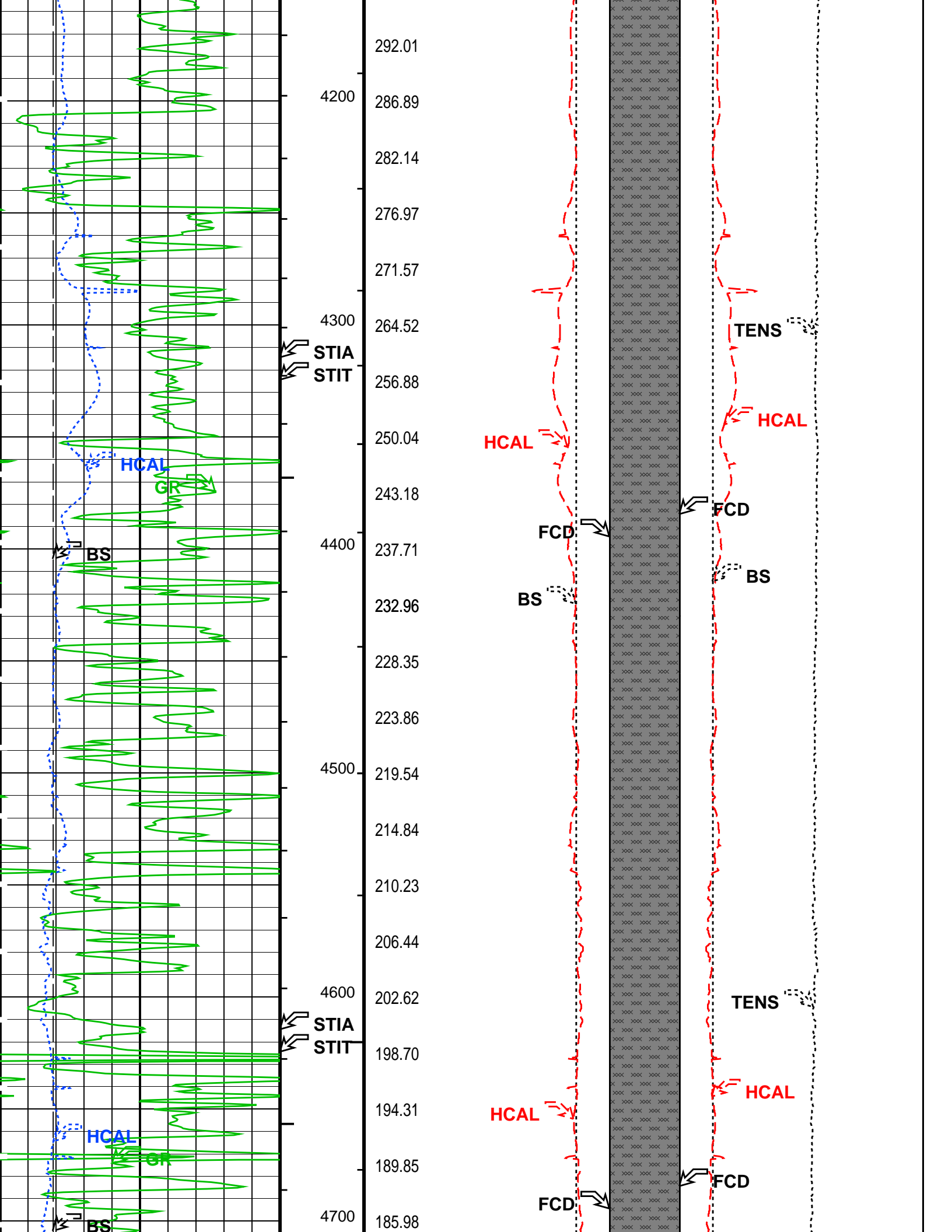


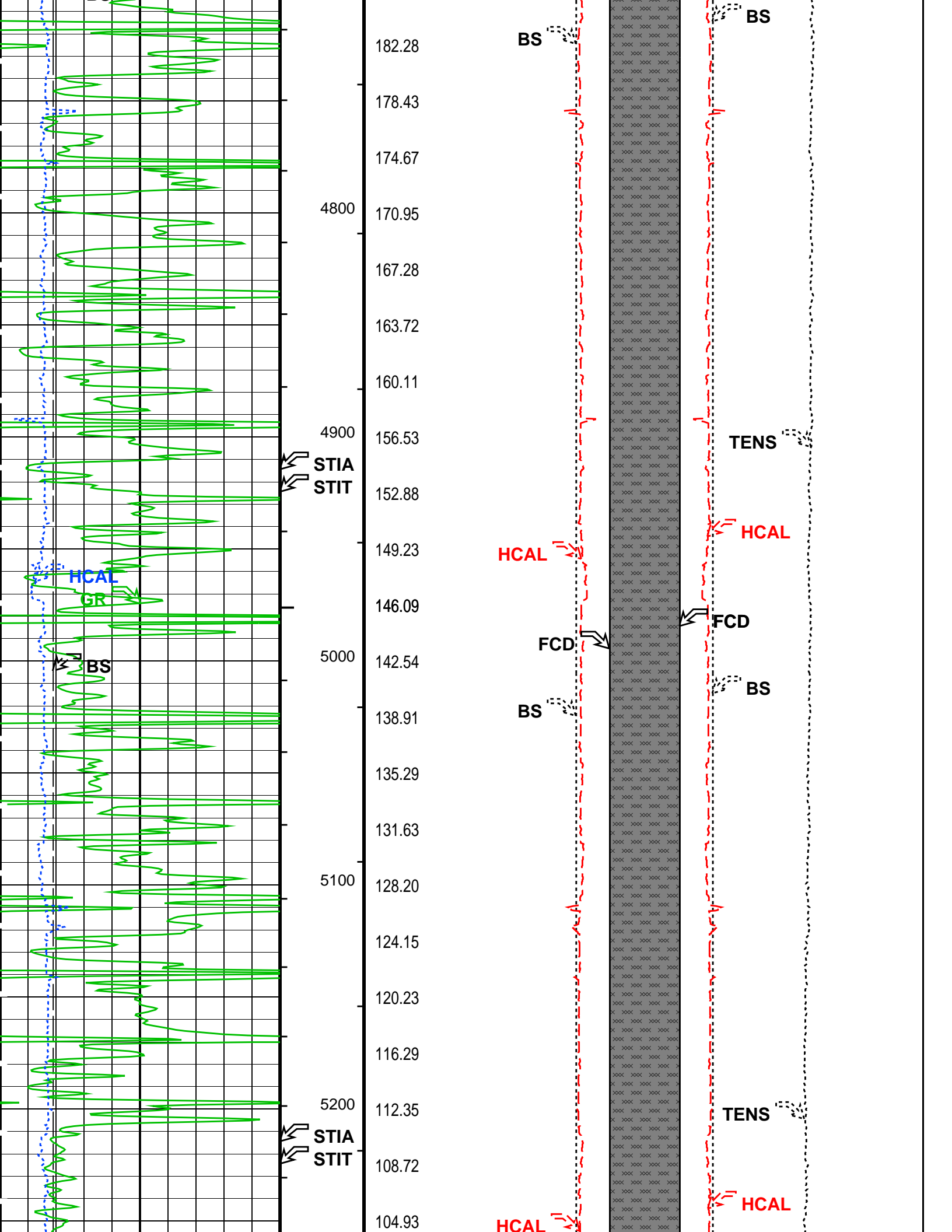


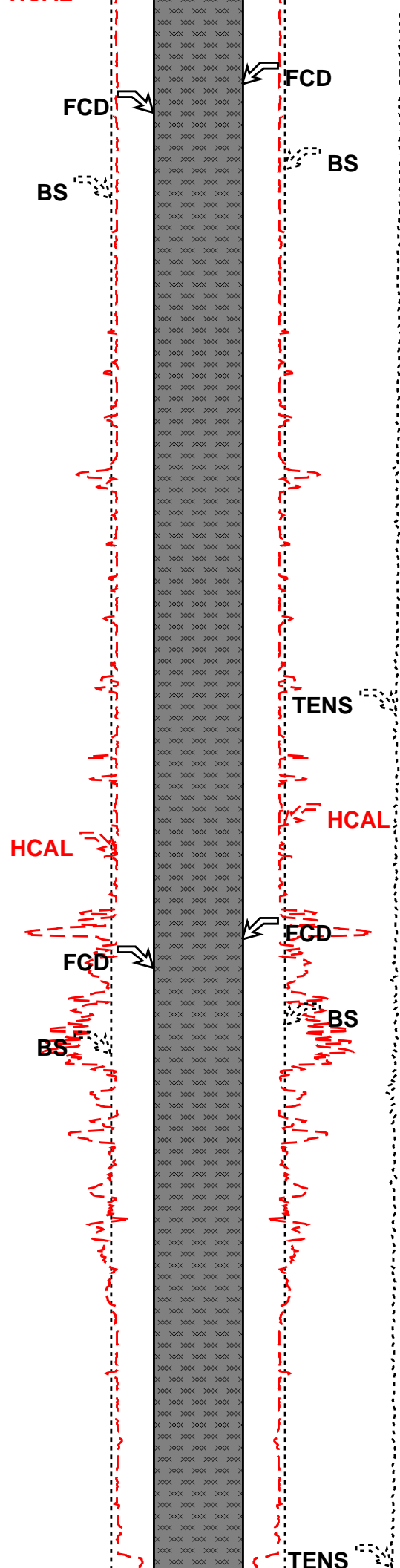
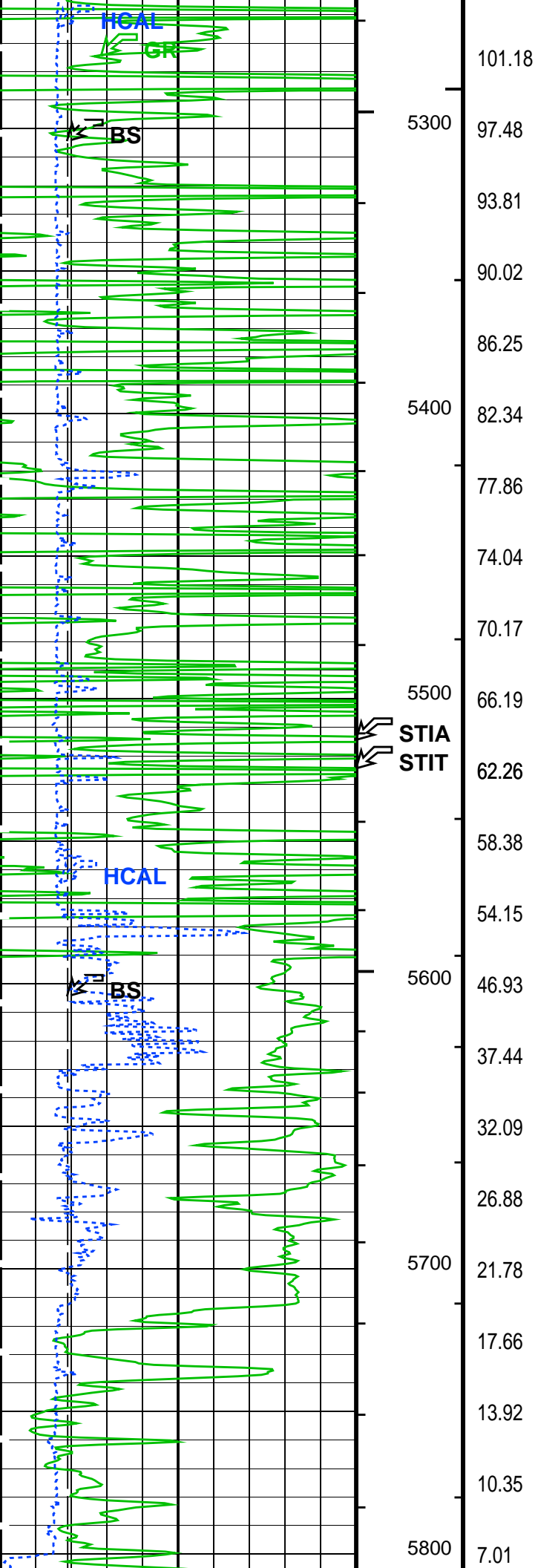


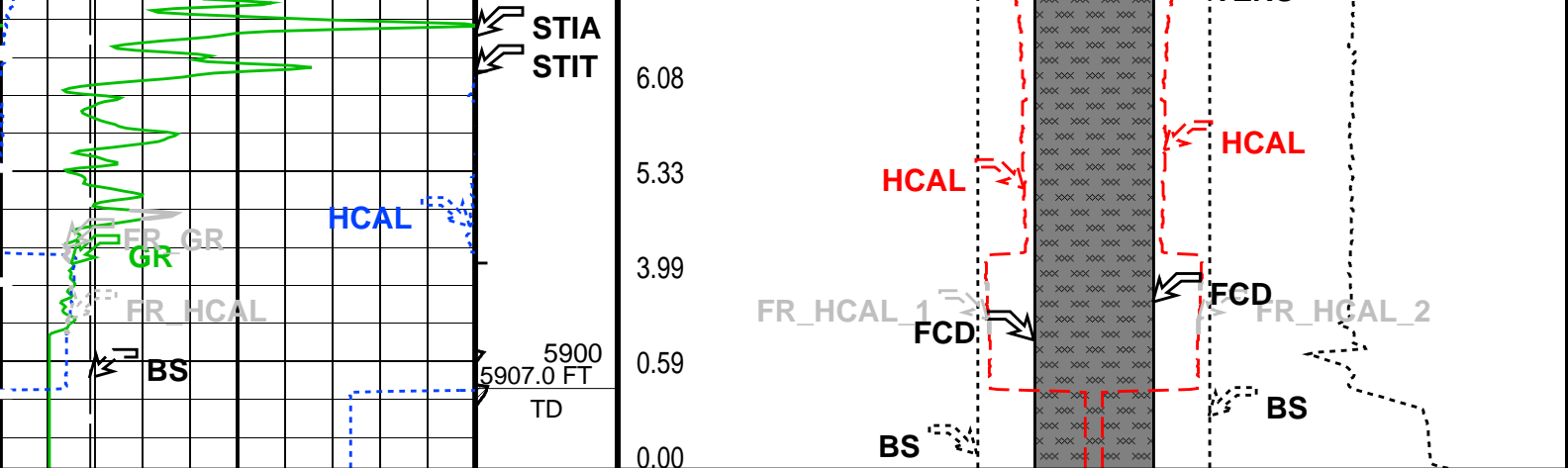












Bit Size (BS) (IN)		Stuck Stretch (STIT) (F)	23	3	3	23
Gamma Ray (GR) (GAPI)		Cable Drag From STIA to STIT	23	3	3	23
HILT Caliper (HCAL) (IN)		Tool/Tot. Drag From D3T to STIA	23	3	3	23
Cement Volume (ICV) (F3)		Tension (TENS) (LBF)				
		6000				
		0				
		FCD2 – FCD3 From FCD2 to FCD3				

PIP SUMMARY

- Integrated Hole Volume Minor Pip Every 10 F3
- Integrated Hole Volume Major Pip Every 100 F3
- Integrated Cement Volume Minor Pip Every 10 F3
- Integrated Cement Volume Major Pip Every 100 F3

Time Mark Every 60 S

Parameters

DLIS Name	Description	Value
FCD	HOLEV: Integrated Hole/Cement Volume	5.5 IN
HVCS	Future Casing (Outer) Diameter	AUTOMATIC
STI	Integrated Hole Volume Caliper Selection	
LBFR	STI: Stuck Tool Indicator	TDL
STKT	Trigger for MAXIS First Reading Label	2.5 FT
TDD	STI Stuck Threshold	5910.00 FT
TDL	Total Depth – Driller	5907.00 FT
	Total Depth – Logger	
	System and Miscellaneous	
BS	Bit Size	7.875 IN
DORL	Depth Offset for Repeat Analysis	0.0 FT
TD	Total Depth	5907 FT

Format: G_DCAL_FORMAT Vertical Scale: 2" per 100' Graphics File Created: 20-Mar-2012 06:47

OP System Version: 19C0-187

AIT-M 19C0-187 HILTH-FTB 19C0-187
DTC-H 19C0-187

Output DLIS Files

DEFAULT AIT_TLD_MCFL_CNL_016LUP FN:15 PRODUCER 20-Mar-2012 06:47

Platform Express

Cement Volume