

The Road to Excellence Starts with Safety

Sold To #: 304535	Ship To #: 2320748	Quote #:	Sales Order #: 9224638
Customer: PDC ENERGY EBUS	Customer Rep:		
Well Name: National Hog Farm	Well #: 24-9	API/UWI #: 05-123-20923	
Field: Wattenberg	City (SAP): KERSEY	County/Parish: Weld	State: Colorado
Job Purpose: Recement Service			
Well Type: Development Well	Job Type: Recement Service		
Sales Person: FLING, MATTHEW	Srv Supervisor: SIPNEFSKI, ROBERT	MBU ID Emp #: 419391	

Job Personnel

HES Emp Name	Exp Hrs	Emp #	HES Emp Name	Exp Hrs	Emp #	HES Emp Name	Exp Hrs	Emp #
BOETTIGER, MARK	3.5	500519	HALE, ROBERT E	3.5	470588	MEADOWS, DANIEL Graham	3.5	500668
SIPNEFSKI, ROBERT Anthony	3.5	419391						

Equipment

HES Unit #	Distance-1 way	HES Unit #	Distance-1 way	HES Unit #	Distance-1 way	HES Unit #	Distance-1 way
10248053C	53 mile	10857080C	53 mile	10951208	53 mile	11341988C	53 mile
5707C	53 mile						

Job Hours

Date	On Location Hours	Operating Hours	Date	On Location Hours	Operating Hours	Date	On Location Hours	Operating Hours
1/24/12	3.5	1.5						
TOTAL			Total is the sum of each column separately					

Job

Job Times

Formation Name	Formation Depth (MD)	Top	Bottom	Called Out	Date	Time	Time Zone
Form Type			BHST	On Location	24 - Jan - 2012	06:15	MST
Job depth MD	3100. ft		Job Depth TVD	3100. ft	Job Started	24 - Jan - 2012	00:00
Water Depth			Wk Ht Above Floor	4. ft	Job Completed	24 - Jan - 2012	00:00
Perforation Depth (MD)	From		To	Departed Loc	24 - Jan - 2012	00:00	MST

Well Data

Description	New / Used	Max pressure psig	Size in	ID in	Weight lbm/ft	Thread	Grade	Top MD ft	Bottom MD ft	Top TVD ft	Bottom TVD ft
Open Hole				9.				415.	3100.		
Production Casing	Used		4.5	4.052	10.5		J-55		8450.		
Surface Casing	Used		8.625	8.097	24.		J-55		415.		
TUBING	Unknown		1.25	.671	3.02				3200.		

Tools and Accessories

Type	Size	Qty	Make	Depth	Type	Size	Qty	Make	Depth	Type	Size	Qty	Make
Guide Shoe					Packer					Top Plug			
Float Shoe					Bridge Plug					Bottom Plug			
Float Collar					Retainer					SSR plug set			
Insert Float										Plug Container			
Stage Tool										Centralizers			

Miscellaneous Materials

Gelling Agt		Conc		Surfactant		Conc		Acid Type		Qty		Conc	%
Treatment Fld		Conc		Inhibitor		Conc		Sand Type		Size		Qty	

Fluid Data

Stage/Plug #: 1

Fluid #	Stage Type	Fluid Name	Qty	Qty uom	Mixing Density lbm/gal	Yield ft ³ /sk	Mix Fluid Gal/sk	Rate bbl/min	Total Mix Fluid Gal/sk
1	ClayWeb Water Spacer		10.00	bbl	8.33	.0	.0	2.0	
2	MUD FLUSH III	MUD FLUSH III - SBM (528788)	12.00	bbl	8.4	.0	.0	2.0	
3	ClayWeb Water Spacer		10.00	bbl	8.33	.0	.0	2.0	
59.525 gal/Mgal		CLA-WEB - TOTE (101985045)							
4	Varicem 12#	VARICEM (TM) CEMENT (452009)	500.0	sacks	12.	2.18	12.34	2.0	12.34
12.34 Gal		FRESH WATER							
Calculated Values		Pressures		Volumes					
Displacement		Shut In: Instant		Lost Returns		Cement Slurry		Pad	
Top Of Cement		5 Min		Cement Returns	28BBL	Actual Displacement		Treatment	
Frac Gradient		15 Min		Spacers		Load and Breakdown		Total Job	
Rates									
Circulating		Mixing	2BPM	Displacement	2BPM	Avg. Job			
Cement Left In Pipe	Amount	0 ft	Reason	Shoe Joint					
Frac Ring # 1 @	ID	Frac ring # 2 @	ID	Frac Ring # 3 @	ID	Frac Ring # 4 @	ID		
The Information Stated Herein Is Correct				Customer Representative Signature					

The Road to Excellence Starts with Safety

Sold To #: 304535	Ship To #: 2320748	Quote #:	Sales Order #: 9224638
Customer: PDC ENERGY EBUS		Customer Rep:	
Well Name: National Hog Farm	Well #: 24-9	API/UWI #: 05-123-20923	
Field: Wattenberg	City (SAP): KERSEY	County/Parish: Weld	State: Colorado
Legal Description:			
Lat: N 0 deg. OR N 0 deg. 0 min. 0 secs.		Long: E 0 deg. OR E 0 deg. 0 min. 0 secs.	
Contractor:		Rig/Platform Name/Num:	
Job Purpose: Recement Service			
Well Type: Development Well		Ticket Amount:	
Sales Person: FLING, MATTHEW		Job Type: Recement Service	
Srv Supervisor: SIPNEFSKI, ROBERT		MBU ID Emp #: 419391	

Activity Description	Date/Time	Cht #	Rate bbl/ min	Volume bbl		Pressure psig		Comments
				Stage	Total	Tubing	Casing	
Arrive at Location from Service Center	01/24/2012 06:15							
Rig-Up Equipment	01/24/2012 06:30							PERFORMED LOCATION ASSESSMENT PRIOR TO RIG UP.
Safety Meeting	01/24/2012 07:30							HELD SAFETY MEETING WITH ALL 3RD PARTY PERSONNEL.
Start Job	01/24/2012 07:42							
Test Lines	01/24/2012 07:44						3644.0	
Pump Spacer 1	01/24/2012 07:46		2	10			1763.0	10BBL OF CLAYWEB WATER, SUPPLIED BY RIG.
Pump Spacer 2	01/24/2012 07:52		2	12			1740.0	12BBL OF MUDFLUSH III MIXED WITH WATER, SUPPLIED BY RIG.
Pump Spacer 1	01/24/2012 07:57		2	10			1559.0	10BBL OF CLAYWEB WATER, SUPPLIED BY RIG.
Pump Cement	01/24/2012 08:03		2	97			1717.0	250SKS OF VARICEM B1 CMT. @ 12PPG MIXED WITH WATER, SUPPLIED BY RIG.
Pump Displacement	01/24/2012 08:53		2	1.5			2152.0	PUMPED 1.5BBL OF WATER TO CLEAN TUBING.
Shutdown	01/24/2012 08:54							WAIT ON RIG TO LAY DOWN 50 STANDS.
Activity Description	Date/Time	Cht	Rate bbl/ min	Volume bbl		Pressure psig		Comments

Sold To #: 304535

Ship To #: 2320748

Quote #:

Sales Order #: 9224638

SUMMIT Version: 7.20.130

Tuesday, January 24, 2012 10:17:00

Cementing Job Log

		#		Stage	Total	Tubing	Casing	
Pump Cement	01/24/2012 09:27		2	68			1265. 0	170SKS OF VARICEM B1 CMT.@12PPG MIXED WITH WATER, SUPPLIED BY RIG.
Pump Displacement	01/24/2012 10:01		2	1.5			1021. 0	PUMPED 1.5BBL OF WATER TO CLEAN TUBING. 28BBL OF CEMENT RETURNED TO PIT.
End Job	01/24/2012 10:03							HELD PRE-RIG DOWN SAFETY MEETING, PREPARE FOR DEPARTURE.

Sold To # : 304535

Ship To # :2320748

Quote # :

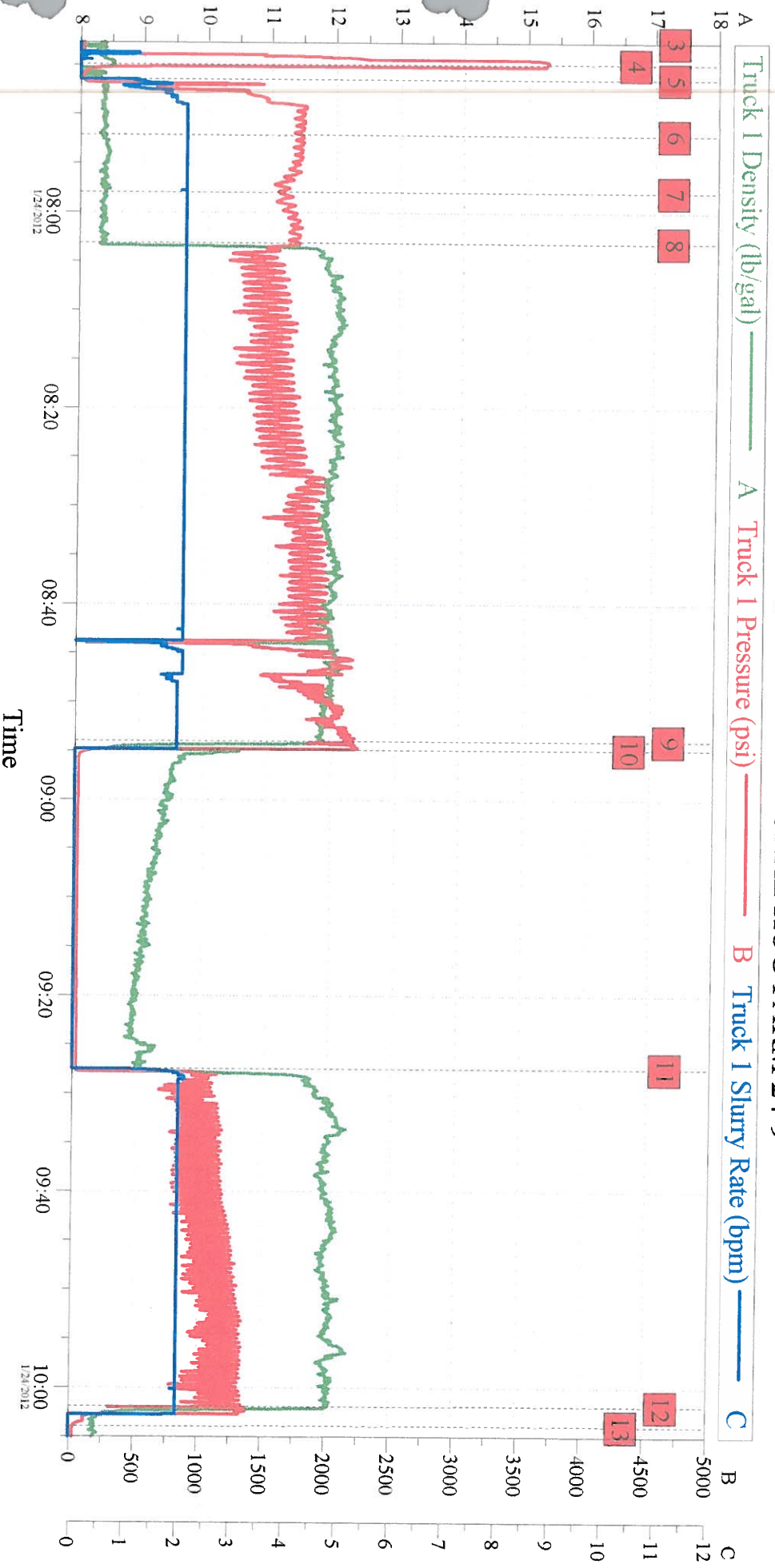
Sales Order # :

9224638

SUMMIT Version: 7.20.130

Tuesday, January 24, 2012 10:17:00

PDC ENERGY RECEMENT NATIONAL HOG FARM 24-9



Global Event Log

Intersection	T1P	Intersection	T1P	Intersection	T1P
Start Job	07:42:38 25.00	4	Test Lines	07:44:54 3644	5
Pump Spacer 2	07:52:08 1740	7	Pump Spacer 1	07:57:58 1559	8
Pump Displacement	08:53:58 2152	10	Shutdown	08:54:52 155.3	11
Pump Displacement	10:01:55 1021	13	End Job	10:03:58 34.22	

Customer:
Well Description:

Job Date: 24-Jan-2012
UWI:

Sales Order #: 9224638