

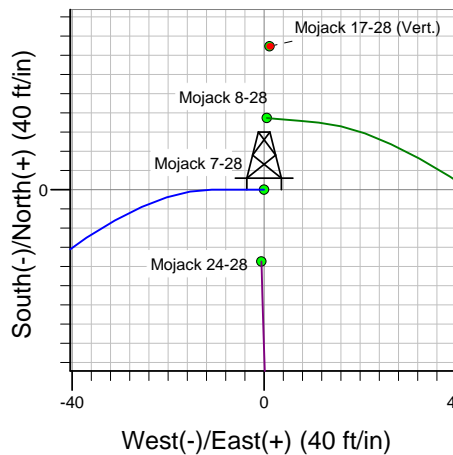
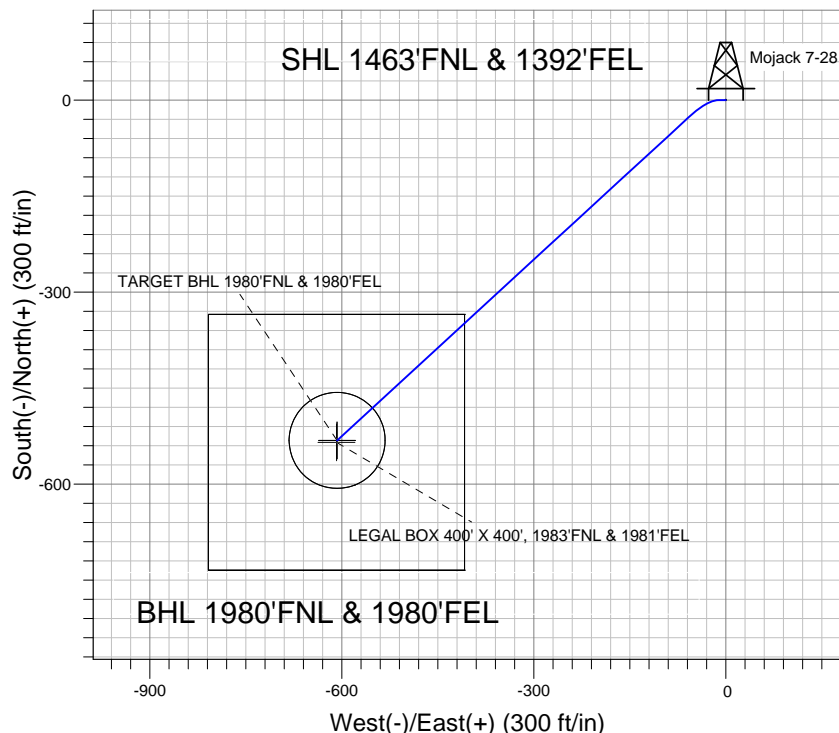
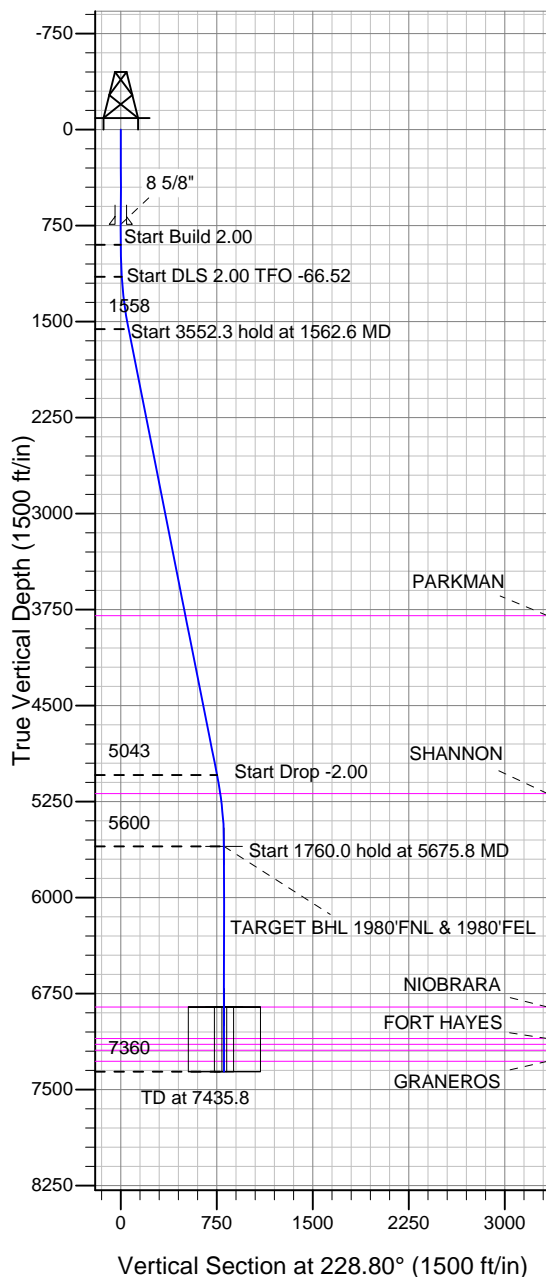
Well Name: Mojack 7-28

Surface Location: Mojack 24-28 Pad Sec.28-T7N-R64W
North American Datum 1983 , US State Plane 1983 , Colorado Northern Zone

Ground Elevation: 4896.0

+N/-S	+E/-W	Northing	Easting	Latitude	Longitude	Slot
0.0	0.0	1443641.91	3263903.95	40.547318	-104.550363	
Original Well Elev WELL @ 4908.0ft (Original Well Elev)						

BAYSWATER EXPLORATION & PRODUCTION



Azimuths to True North
Magnetic North: 8.65°
Magnetic Field
Strength: 53146.4snT
Dip Angle: 67.18°
Date: 4/2/2012
Model: IGRF2010

WELLBORE TARGET DETAILS (LAT/LONG)

Name	TVD	+N/-S	+E/-W	Latitude	Longitude	Shape
TARGET BHL 1980'FNL & 1980'FEL	5600.0	-531.9	-607.5	40.545858	-104.552549	Point
LEGAL BOX 400' X 400', 1983'FNL & 1981'FEL	6856.0	-534.9	-608.5	40.545850	-104.552552	Rectangle (Sides: L400.0 W400.0)
TARGET CIRCLE 1980'FNL & 1980'FEL	6856.0	-531.9	-607.5	40.545858	-104.552549	Circle (Radius: 75.0)

SECTION DETAILS

Sec	MD	Inc	Azi	TVD	+N/-S	+E/-W	DLeg	TFace	VSec	Target
1	0.0	0.00	0.00	0.0	0.0	0.0	0.00	0.00	0.0	
2	900.0	0.00	0.00	900.0	0.0	0.0	0.00	0.00	0.0	
3	1150.0	5.00	270.00	1149.7	0.0	-10.9	2.00	270.00	8.2	
4	1562.6	11.22	227.41	1558.3	-27.2	-58.5	2.00	-66.52	61.9	
5	5114.9	11.22	227.41	5042.7	-494.9	-567.2	0.00	0.00	752.8	
6	5675.8	0.00	0.00	5600.0	-531.9	-607.5	2.00	180.00	807.5	TARGET BHL 1980'FNL & 1980'FEL
7	7435.8	0.00	0.00	7360.0	-531.9	-607.5	0.00	0.00	807.5	



BAYSWATER EXPLORATION & PRODUCTION

SEC.28-T7N-R64W

Mojack 24-28 Pad Sec.28-T7N-R64W

Mojack 7-28

Wellbore #1

Plan: Plan #1 (3-28-12)

Standard Planning Report

03 April, 2012

Plan Sections										
Measured Depth (ft)	Inclination (°)	Azimuth (°)	Vertical Depth (ft)	+N/-S (ft)	+E/-W (ft)	Dogleg Rate (°/100ft)	Build Rate (°/100ft)	Turn Rate (°/100ft)	TFO (°)	Target
0.0	0.00	0.00	0.0	0.0	0.0	0.00	0.00	0.00	0.00	
900.0	0.00	0.00	900.0	0.0	0.0	0.00	0.00	0.00	0.00	
1,150.0	5.00	270.00	1,149.7	0.0	-10.9	2.00	2.00	0.00	270.00	
1,562.6	11.22	227.41	1,558.3	-27.2	-58.5	2.00	1.51	-10.32	-66.52	
5,114.9	11.22	227.41	5,042.7	-494.9	-567.2	0.00	0.00	0.00	0.00	
5,675.8	0.00	0.00	5,600.0	-531.9	-607.5	2.00	-2.00	0.00	180.00	TARGET BHL 1980
7,435.8	0.00	0.00	7,360.0	-531.9	-607.5	0.00	0.00	0.00	0.00	

Database:	Landmark	Local Co-ordinate Reference:	Well Mojack 7-28
Company:	BAYSWATER EXPLORATION & PRODUCTION	TVD Reference:	WELL @ 4908.0ft (Original Well Elev)
Project:	SEC.28-T7N-R64W	MD Reference:	WELL @ 4908.0ft (Original Well Elev)
Site:	Mojack 24-28 Pad Sec.28-T7N-R64W	North Reference:	True
Well:	Mojack 7-28	Survey Calculation Method:	Minimum Curvature
Wellbore:	Wellbore #1		
Design:	Plan #1 (3-28-12)		

Planned Survey

Measured Depth (ft)	Inclination (°)	Azimuth (°)	Vertical Depth (ft)	+N/-S (ft)	+E/-W (ft)	Vertical Section (ft)	Dogleg Rate (°/100ft)	Build Rate (°/100ft)	Turn Rate (°/100ft)
0.0	0.00	0.00	0.0	0.0	0.0	0.0	0.00	0.00	0.00
40.0	0.00	0.00	40.0	0.0	0.0	0.0	0.00	0.00	0.00
80.0	0.00	0.00	80.0	0.0	0.0	0.0	0.00	0.00	0.00
120.0	0.00	0.00	120.0	0.0	0.0	0.0	0.00	0.00	0.00
160.0	0.00	0.00	160.0	0.0	0.0	0.0	0.00	0.00	0.00
200.0	0.00	0.00	200.0	0.0	0.0	0.0	0.00	0.00	0.00
240.0	0.00	0.00	240.0	0.0	0.0	0.0	0.00	0.00	0.00
280.0	0.00	0.00	280.0	0.0	0.0	0.0	0.00	0.00	0.00
320.0	0.00	0.00	320.0	0.0	0.0	0.0	0.00	0.00	0.00
360.0	0.00	0.00	360.0	0.0	0.0	0.0	0.00	0.00	0.00
400.0	0.00	0.00	400.0	0.0	0.0	0.0	0.00	0.00	0.00
440.0	0.00	0.00	440.0	0.0	0.0	0.0	0.00	0.00	0.00
480.0	0.00	0.00	480.0	0.0	0.0	0.0	0.00	0.00	0.00
520.0	0.00	0.00	520.0	0.0	0.0	0.0	0.00	0.00	0.00
560.0	0.00	0.00	560.0	0.0	0.0	0.0	0.00	0.00	0.00
600.0	0.00	0.00	600.0	0.0	0.0	0.0	0.00	0.00	0.00
640.0	0.00	0.00	640.0	0.0	0.0	0.0	0.00	0.00	0.00
680.0	0.00	0.00	680.0	0.0	0.0	0.0	0.00	0.00	0.00
720.0	0.00	0.00	720.0	0.0	0.0	0.0	0.00	0.00	0.00
740.0	0.00	0.00	740.0	0.0	0.0	0.0	0.00	0.00	0.00
8 5/8"									
760.0	0.00	0.00	760.0	0.0	0.0	0.0	0.00	0.00	0.00
800.0	0.00	0.00	800.0	0.0	0.0	0.0	0.00	0.00	0.00
840.0	0.00	0.00	840.0	0.0	0.0	0.0	0.00	0.00	0.00
880.0	0.00	0.00	880.0	0.0	0.0	0.0	0.00	0.00	0.00
900.0	0.00	0.00	900.0	0.0	0.0	0.0	0.00	0.00	0.00
920.0	0.40	270.00	920.0	0.0	-0.1	0.1	2.00	2.00	0.00
960.0	1.20	270.00	960.0	0.0	-0.6	0.5	2.00	2.00	0.00
1,000.0	2.00	270.00	1,000.0	0.0	-1.7	1.3	2.00	2.00	0.00
1,040.0	2.80	270.00	1,039.9	0.0	-3.4	2.6	2.00	2.00	0.00
1,080.0	3.60	270.00	1,079.9	0.0	-5.7	4.3	2.00	2.00	0.00
1,120.0	4.40	270.00	1,119.8	0.0	-8.4	6.4	2.00	2.00	0.00
1,150.0	5.00	270.00	1,149.7	0.0	-10.9	8.2	2.00	2.00	0.00
1,160.0	5.08	267.93	1,159.6	0.0	-11.8	8.9	2.00	0.83	-20.71
1,200.0	5.48	260.34	1,199.5	-0.4	-15.4	11.9	2.00	0.98	-18.97
1,240.0	5.95	253.86	1,239.3	-1.3	-19.3	15.4	2.00	1.19	-16.20
1,280.0	6.49	248.40	1,279.0	-2.7	-23.4	19.4	2.00	1.35	-13.67
1,320.0	7.08	243.80	1,318.8	-4.6	-27.7	23.9	2.00	1.47	-11.50
1,360.0	7.70	239.92	1,358.4	-7.1	-32.2	28.9	2.00	1.57	-9.69
1,400.0	8.36	236.64	1,398.0	-10.0	-37.0	34.4	2.00	1.64	-8.21
1,440.0	9.04	233.84	1,437.6	-13.5	-42.0	40.4	2.00	1.70	-7.00
1,480.0	9.73	231.43	1,477.0	-17.4	-47.1	46.9	2.00	1.74	-6.02
1,520.0	10.45	229.34	1,516.4	-21.9	-52.5	53.9	2.00	1.78	-5.22
1,560.0	11.17	227.52	1,555.7	-26.9	-58.1	61.4	2.00	1.81	-4.55
1,562.6	11.22	227.41	1,558.3	-27.2	-58.5	61.9	2.00	1.82	-4.24
1,600.0	11.22	227.41	1,594.9	-32.1	-63.9	69.2	0.00	0.00	0.00
1,640.0	11.22	227.41	1,634.2	-37.4	-69.6	77.0	0.00	0.00	0.00
1,680.0	11.22	227.41	1,673.4	-42.7	-75.3	84.8	0.00	0.00	0.00
1,720.0	11.22	227.41	1,712.7	-47.9	-81.1	92.6	0.00	0.00	0.00
1,760.0	11.22	227.41	1,751.9	-53.2	-86.8	100.3	0.00	0.00	0.00
1,800.0	11.22	227.41	1,791.1	-58.5	-92.5	108.1	0.00	0.00	0.00
1,840.0	11.22	227.41	1,830.4	-63.7	-98.2	115.9	0.00	0.00	0.00
1,880.0	11.22	227.41	1,869.6	-69.0	-104.0	123.7	0.00	0.00	0.00

Database:	Landmark	Local Co-ordinate Reference:	Well Mojack 7-28
Company:	BAYSWATER EXPLORATION & PRODUCTION	TVD Reference:	WELL @ 4908.0ft (Original Well Elev)
Project:	SEC.28-T7N-R64W	MD Reference:	WELL @ 4908.0ft (Original Well Elev)
Site:	Mojack 24-28 Pad Sec.28-T7N-R64W	North Reference:	True
Well:	Mojack 7-28	Survey Calculation Method:	Minimum Curvature
Wellbore:	Wellbore #1		
Design:	Plan #1 (3-28-12)		

Planned Survey									
Measured Depth (ft)	Inclination (°)	Azimuth (°)	Vertical Depth (ft)	+N/-S (ft)	+E/-W (ft)	Vertical Section (ft)	Dogleg Rate (°/100ft)	Build Rate (°/100ft)	Turn Rate (°/100ft)
1,920.0	11.22	227.41	1,908.8	-74.3	-109.7	131.4	0.00	0.00	0.00
1,960.0	11.22	227.41	1,948.1	-79.5	-115.4	139.2	0.00	0.00	0.00
2,000.0	11.22	227.41	1,987.3	-84.8	-121.1	147.0	0.00	0.00	0.00
2,040.0	11.22	227.41	2,026.5	-90.1	-126.9	154.8	0.00	0.00	0.00
2,080.0	11.22	227.41	2,065.8	-95.3	-132.6	162.6	0.00	0.00	0.00
2,120.0	11.22	227.41	2,105.0	-100.6	-138.3	170.3	0.00	0.00	0.00
2,160.0	11.22	227.41	2,144.3	-105.9	-144.1	178.1	0.00	0.00	0.00
2,200.0	11.22	227.41	2,183.5	-111.1	-149.8	185.9	0.00	0.00	0.00
2,240.0	11.22	227.41	2,222.7	-116.4	-155.5	193.7	0.00	0.00	0.00
2,280.0	11.22	227.41	2,262.0	-121.6	-161.2	201.5	0.00	0.00	0.00
2,320.0	11.22	227.41	2,301.2	-126.9	-167.0	209.2	0.00	0.00	0.00
2,360.0	11.22	227.41	2,340.4	-132.2	-172.7	217.0	0.00	0.00	0.00
2,400.0	11.22	227.41	2,379.7	-137.4	-178.4	224.8	0.00	0.00	0.00
2,440.0	11.22	227.41	2,418.9	-142.7	-184.2	232.6	0.00	0.00	0.00
2,480.0	11.22	227.41	2,458.1	-148.0	-189.9	240.3	0.00	0.00	0.00
2,520.0	11.22	227.41	2,497.4	-153.2	-195.6	248.1	0.00	0.00	0.00
2,560.0	11.22	227.41	2,536.6	-158.5	-201.3	255.9	0.00	0.00	0.00
2,600.0	11.22	227.41	2,575.8	-163.8	-207.1	263.7	0.00	0.00	0.00
2,640.0	11.22	227.41	2,615.1	-169.0	-212.8	271.5	0.00	0.00	0.00
2,680.0	11.22	227.41	2,654.3	-174.3	-218.5	279.2	0.00	0.00	0.00
2,720.0	11.22	227.41	2,693.6	-179.6	-224.3	287.0	0.00	0.00	0.00
2,760.0	11.22	227.41	2,732.8	-184.8	-230.0	294.8	0.00	0.00	0.00
2,800.0	11.22	227.41	2,772.0	-190.1	-235.7	302.6	0.00	0.00	0.00
2,840.0	11.22	227.41	2,811.3	-195.4	-241.4	310.4	0.00	0.00	0.00
2,880.0	11.22	227.41	2,850.5	-200.6	-247.2	318.1	0.00	0.00	0.00
2,920.0	11.22	227.41	2,889.7	-205.9	-252.9	325.9	0.00	0.00	0.00
2,960.0	11.22	227.41	2,929.0	-211.2	-258.6	333.7	0.00	0.00	0.00
3,000.0	11.22	227.41	2,968.2	-216.4	-264.4	341.5	0.00	0.00	0.00
3,040.0	11.22	227.41	3,007.4	-221.7	-270.1	349.3	0.00	0.00	0.00
3,080.0	11.22	227.41	3,046.7	-227.0	-275.8	357.0	0.00	0.00	0.00
3,120.0	11.22	227.41	3,085.9	-232.2	-281.5	364.8	0.00	0.00	0.00
3,160.0	11.22	227.41	3,125.1	-237.5	-287.3	372.6	0.00	0.00	0.00
3,200.0	11.22	227.41	3,164.4	-242.8	-293.0	380.4	0.00	0.00	0.00
3,240.0	11.22	227.41	3,203.6	-248.0	-298.7	388.1	0.00	0.00	0.00
3,280.0	11.22	227.41	3,242.9	-253.3	-304.5	395.9	0.00	0.00	0.00
3,320.0	11.22	227.41	3,282.1	-258.6	-310.2	403.7	0.00	0.00	0.00
3,360.0	11.22	227.41	3,321.3	-263.8	-315.9	411.5	0.00	0.00	0.00
3,400.0	11.22	227.41	3,360.6	-269.1	-321.6	419.3	0.00	0.00	0.00
3,440.0	11.22	227.41	3,399.8	-274.4	-327.4	427.0	0.00	0.00	0.00
3,480.0	11.22	227.41	3,439.0	-279.6	-333.1	434.8	0.00	0.00	0.00
3,520.0	11.22	227.41	3,478.3	-284.9	-338.8	442.6	0.00	0.00	0.00
3,560.0	11.22	227.41	3,517.5	-290.2	-344.6	450.4	0.00	0.00	0.00
3,600.0	11.22	227.41	3,556.7	-295.4	-350.3	458.2	0.00	0.00	0.00
3,640.0	11.22	227.41	3,596.0	-300.7	-356.0	465.9	0.00	0.00	0.00
3,680.0	11.22	227.41	3,635.2	-306.0	-361.7	473.7	0.00	0.00	0.00
3,720.0	11.22	227.41	3,674.5	-311.2	-367.5	481.5	0.00	0.00	0.00
3,760.0	11.22	227.41	3,713.7	-316.5	-373.2	489.3	0.00	0.00	0.00
3,800.0	11.22	227.41	3,752.9	-321.8	-378.9	497.0	0.00	0.00	0.00
3,840.0	11.22	227.41	3,792.2	-327.0	-384.7	504.8	0.00	0.00	0.00
3,844.9	11.22	227.41	3,797.0	-327.7	-385.4	505.8	0.00	0.00	0.00
PARKMAN									
3,880.0	11.22	227.41	3,831.4	-332.3	-390.4	512.6	0.00	0.00	0.00
3,920.0	11.22	227.41	3,870.6	-337.5	-396.1	520.4	0.00	0.00	0.00

Database:	Landmark	Local Co-ordinate Reference:	Well Mojack 7-28
Company:	BAYSWATER EXPLORATION & PRODUCTION	TVD Reference:	WELL @ 4908.0ft (Original Well Elev)
Project:	SEC.28-T7N-R64W	MD Reference:	WELL @ 4908.0ft (Original Well Elev)
Site:	Mojack 24-28 Pad Sec.28-T7N-R64W	North Reference:	True
Well:	Mojack 7-28	Survey Calculation Method:	Minimum Curvature
Wellbore:	Wellbore #1		
Design:	Plan #1 (3-28-12)		

Planned Survey									
Measured Depth (ft)	Inclination (°)	Azimuth (°)	Vertical Depth (ft)	+N/-S (ft)	+E/-W (ft)	Vertical Section (ft)	Dogleg Rate (°/100ft)	Build Rate (°/100ft)	Turn Rate (°/100ft)
3,960.0	11.22	227.41	3,909.9	-342.8	-401.8	528.2	0.00	0.00	0.00
4,000.0	11.22	227.41	3,949.1	-348.1	-407.6	535.9	0.00	0.00	0.00
4,040.0	11.22	227.41	3,988.3	-353.3	-413.3	543.7	0.00	0.00	0.00
4,080.0	11.22	227.41	4,027.6	-358.6	-419.0	551.5	0.00	0.00	0.00
4,120.0	11.22	227.41	4,066.8	-363.9	-424.8	559.3	0.00	0.00	0.00
4,160.0	11.22	227.41	4,106.0	-369.1	-430.5	567.1	0.00	0.00	0.00
4,200.0	11.22	227.41	4,145.3	-374.4	-436.2	574.8	0.00	0.00	0.00
4,240.0	11.22	227.41	4,184.5	-379.7	-441.9	582.6	0.00	0.00	0.00
4,280.0	11.22	227.41	4,223.8	-384.9	-447.7	590.4	0.00	0.00	0.00
4,320.0	11.22	227.41	4,263.0	-390.2	-453.4	598.2	0.00	0.00	0.00
4,360.0	11.22	227.41	4,302.2	-395.5	-459.1	605.9	0.00	0.00	0.00
4,400.0	11.22	227.41	4,341.5	-400.7	-464.9	613.7	0.00	0.00	0.00
4,440.0	11.22	227.41	4,380.7	-406.0	-470.6	621.5	0.00	0.00	0.00
4,480.0	11.22	227.41	4,419.9	-411.3	-476.3	629.3	0.00	0.00	0.00
4,520.0	11.22	227.41	4,459.2	-416.5	-482.0	637.1	0.00	0.00	0.00
4,560.0	11.22	227.41	4,498.4	-421.8	-487.8	644.8	0.00	0.00	0.00
4,600.0	11.22	227.41	4,537.6	-427.1	-493.5	652.6	0.00	0.00	0.00
4,640.0	11.22	227.41	4,576.9	-432.3	-499.2	660.4	0.00	0.00	0.00
4,680.0	11.22	227.41	4,616.1	-437.6	-505.0	668.2	0.00	0.00	0.00
4,720.0	11.22	227.41	4,655.3	-442.9	-510.7	676.0	0.00	0.00	0.00
4,760.0	11.22	227.41	4,694.6	-448.1	-516.4	683.7	0.00	0.00	0.00
4,800.0	11.22	227.41	4,733.8	-453.4	-522.1	691.5	0.00	0.00	0.00
4,840.0	11.22	227.41	4,773.1	-458.7	-527.9	699.3	0.00	0.00	0.00
4,880.0	11.22	227.41	4,812.3	-463.9	-533.6	707.1	0.00	0.00	0.00
4,920.0	11.22	227.41	4,851.5	-469.2	-539.3	714.9	0.00	0.00	0.00
4,960.0	11.22	227.41	4,890.8	-474.5	-545.1	722.6	0.00	0.00	0.00
5,000.0	11.22	227.41	4,930.0	-479.7	-550.8	730.4	0.00	0.00	0.00
5,040.0	11.22	227.41	4,969.2	-485.0	-556.5	738.2	0.00	0.00	0.00
5,080.0	11.22	227.41	5,008.5	-490.3	-562.2	746.0	0.00	0.00	0.00
5,114.9	11.22	227.41	5,042.7	-494.9	-567.2	752.8	0.00	0.00	0.00
5,120.0	11.12	227.41	5,047.7	-495.5	-568.0	753.7	2.00	-2.00	0.00
5,160.0	10.32	227.41	5,087.0	-500.6	-573.4	761.2	2.00	-2.00	0.00
5,200.0	9.52	227.41	5,126.4	-505.2	-578.5	768.1	2.00	-2.00	0.00
5,240.0	8.72	227.41	5,165.9	-509.5	-583.2	774.4	2.00	-2.00	0.00
5,262.3	8.27	227.41	5,188.0	-511.7	-585.6	777.7	2.00	-2.00	0.00
SHANNON									
5,280.0	7.92	227.41	5,205.5	-513.4	-587.4	780.2	2.00	-2.00	0.00
5,320.0	7.12	227.41	5,245.1	-517.0	-591.3	785.4	2.00	-2.00	0.00
5,360.0	6.32	227.41	5,284.9	-520.1	-594.7	790.1	2.00	-2.00	0.00
5,400.0	5.52	227.41	5,324.7	-522.9	-597.8	794.2	2.00	-2.00	0.00
5,440.0	4.72	227.41	5,364.5	-525.3	-600.4	797.8	2.00	-2.00	0.00
5,480.0	3.92	227.41	5,404.4	-527.4	-602.6	800.8	2.00	-2.00	0.00
5,520.0	3.12	227.41	5,444.3	-529.0	-604.4	803.2	2.00	-2.00	0.00
5,560.0	2.32	227.41	5,484.3	-530.3	-605.8	805.1	2.00	-2.00	0.00
5,600.0	1.52	227.41	5,524.2	-531.2	-606.8	806.5	2.00	-2.00	0.00
5,640.0	0.72	227.41	5,564.2	-531.7	-607.4	807.2	2.00	-2.00	0.00
5,675.8	0.00	0.00	5,600.0	-531.9	-607.5	807.5	2.00	-2.00	0.00
TARGET BHL 1980°FNL & 1980°FEL									
5,680.0	0.00	0.00	5,604.2	-531.9	-607.5	807.5	0.00	0.00	0.00
5,720.0	0.00	0.00	5,644.2	-531.9	-607.5	807.5	0.00	0.00	0.00
5,760.0	0.00	0.00	5,684.2	-531.9	-607.5	807.5	0.00	0.00	0.00
5,800.0	0.00	0.00	5,724.2	-531.9	-607.5	807.5	0.00	0.00	0.00
5,840.0	0.00	0.00	5,764.2	-531.9	-607.5	807.5	0.00	0.00	0.00

Database:	Landmark	Local Co-ordinate Reference:	Well Mojack 7-28
Company:	BAYSWATER EXPLORATION & PRODUCTION	TVD Reference:	WELL @ 4908.0ft (Original Well Elev)
Project:	SEC.28-T7N-R64W	MD Reference:	WELL @ 4908.0ft (Original Well Elev)
Site:	Mojack 24-28 Pad Sec.28-T7N-R64W	North Reference:	True
Well:	Mojack 7-28	Survey Calculation Method:	Minimum Curvature
Wellbore:	Wellbore #1		
Design:	Plan #1 (3-28-12)		

Planned Survey									
Measured Depth (ft)	Inclination (°)	Azimuth (°)	Vertical Depth (ft)	+N/-S (ft)	+E/-W (ft)	Vertical Section (ft)	Dogleg Rate (°/100ft)	Build Rate (°/100ft)	Turn Rate (°/100ft)
5,880.0	0.00	0.00	5,804.2	-531.9	-607.5	807.5	0.00	0.00	0.00
5,920.0	0.00	0.00	5,844.2	-531.9	-607.5	807.5	0.00	0.00	0.00
5,960.0	0.00	0.00	5,884.2	-531.9	-607.5	807.5	0.00	0.00	0.00
6,000.0	0.00	0.00	5,924.2	-531.9	-607.5	807.5	0.00	0.00	0.00
6,040.0	0.00	0.00	5,964.2	-531.9	-607.5	807.5	0.00	0.00	0.00
6,080.0	0.00	0.00	6,004.2	-531.9	-607.5	807.5	0.00	0.00	0.00
6,120.0	0.00	0.00	6,044.2	-531.9	-607.5	807.5	0.00	0.00	0.00
6,160.0	0.00	0.00	6,084.2	-531.9	-607.5	807.5	0.00	0.00	0.00
6,200.0	0.00	0.00	6,124.2	-531.9	-607.5	807.5	0.00	0.00	0.00
6,240.0	0.00	0.00	6,164.2	-531.9	-607.5	807.5	0.00	0.00	0.00
6,280.0	0.00	0.00	6,204.2	-531.9	-607.5	807.5	0.00	0.00	0.00
6,320.0	0.00	0.00	6,244.2	-531.9	-607.5	807.5	0.00	0.00	0.00
6,360.0	0.00	0.00	6,284.2	-531.9	-607.5	807.5	0.00	0.00	0.00
6,400.0	0.00	0.00	6,324.2	-531.9	-607.5	807.5	0.00	0.00	0.00
6,440.0	0.00	0.00	6,364.2	-531.9	-607.5	807.5	0.00	0.00	0.00
6,480.0	0.00	0.00	6,404.2	-531.9	-607.5	807.5	0.00	0.00	0.00
6,520.0	0.00	0.00	6,444.2	-531.9	-607.5	807.5	0.00	0.00	0.00
6,560.0	0.00	0.00	6,484.2	-531.9	-607.5	807.5	0.00	0.00	0.00
6,600.0	0.00	0.00	6,524.2	-531.9	-607.5	807.5	0.00	0.00	0.00
6,640.0	0.00	0.00	6,564.2	-531.9	-607.5	807.5	0.00	0.00	0.00
6,680.0	0.00	0.00	6,604.2	-531.9	-607.5	807.5	0.00	0.00	0.00
6,720.0	0.00	0.00	6,644.2	-531.9	-607.5	807.5	0.00	0.00	0.00
6,760.0	0.00	0.00	6,684.2	-531.9	-607.5	807.5	0.00	0.00	0.00
6,800.0	0.00	0.00	6,724.2	-531.9	-607.5	807.5	0.00	0.00	0.00
6,840.0	0.00	0.00	6,764.2	-531.9	-607.5	807.5	0.00	0.00	0.00
6,880.0	0.00	0.00	6,804.2	-531.9	-607.5	807.5	0.00	0.00	0.00
6,920.0	0.00	0.00	6,844.2	-531.9	-607.5	807.5	0.00	0.00	0.00
6,931.8	0.00	0.00	6,856.0	-531.9	-607.5	807.5	0.00	0.00	0.00
NIORARA - TARGET CIRCLE 1980'FNL & 1980'FEL - LEGAL BOX 400' X 400', 1983'FNL & 1981'FEL									
6,960.0	0.00	0.00	6,884.2	-531.9	-607.5	807.5	0.00	0.00	0.00
7,000.0	0.00	0.00	6,924.2	-531.9	-607.5	807.5	0.00	0.00	0.00
7,040.0	0.00	0.00	6,964.2	-531.9	-607.5	807.5	0.00	0.00	0.00
7,080.0	0.00	0.00	7,004.2	-531.9	-607.5	807.5	0.00	0.00	0.00
7,120.0	0.00	0.00	7,044.2	-531.9	-607.5	807.5	0.00	0.00	0.00
7,160.0	0.00	0.00	7,084.2	-531.9	-607.5	807.5	0.00	0.00	0.00
7,177.8	0.00	0.00	7,102.0	-531.9	-607.5	807.5	0.00	0.00	0.00
FORT HAYES									
7,200.0	0.00	0.00	7,124.2	-531.9	-607.5	807.5	0.00	0.00	0.00
7,221.8	0.00	0.00	7,146.0	-531.9	-607.5	807.5	0.00	0.00	0.00
CODELL									
7,240.0	0.00	0.00	7,164.2	-531.9	-607.5	807.5	0.00	0.00	0.00
7,268.8	0.00	0.00	7,193.0	-531.9	-607.5	807.5	0.00	0.00	0.00
GREENHORN									
7,280.0	0.00	0.00	7,204.2	-531.9	-607.5	807.5	0.00	0.00	0.00
7,320.0	0.00	0.00	7,244.2	-531.9	-607.5	807.5	0.00	0.00	0.00
7,354.8	0.00	0.00	7,279.0	-531.9	-607.5	807.5	0.00	0.00	0.00
GRANEROS									
7,360.0	0.00	0.00	7,284.2	-531.9	-607.5	807.5	0.00	0.00	0.00
7,400.0	0.00	0.00	7,324.2	-531.9	-607.5	807.5	0.00	0.00	0.00
7,435.8	0.00	0.00	7,360.0	-531.9	-607.5	807.5	0.00	0.00	0.00

Formations						
	Measured Depth (ft)	Vertical Depth (ft)	Name	Lithology	Dip (°)	Dip Direction (°)
	3,844.9	3,797.0	PARKMAN		0.00	
	5,262.3	5,188.0	SHANNON		0.00	
	6,931.8	6,856.0	NIOBRARA		0.00	
	7,177.8	7,102.0	FORT HAYES		0.00	
	7,221.8	7,146.0	CODELL		0.00	
	7,268.8	7,193.0	GREENHORN		0.00	
	7,354.8	7,279.0	GRANEROS		0.00	



BAYSWATER EXPLORATION & PRODUCTION

SEC.28-T7N-R64W

Mojack 24-28 Pad Sec.28-T7N-R64W

Mojack 7-28

Wellbore #1

Plan #1 (3-28-12)

Anticollision Report

03 April, 2012

Company:	BAYSWATER EXPLORATION & PRODUCTION	Local Co-ordinate Reference:	Well Mojack 7-28
Project:	SEC.28-T7N-R64W	TVD Reference:	WELL @ 4908.0ft (Original Well Elev)
Reference Site:	Mojack 24-28 Pad Sec.28-T7N-R64W	MD Reference:	WELL @ 4908.0ft (Original Well Elev)
Site Error:	0.0ft	North Reference:	True
Reference Well:	Mojack 7-28	Survey Calculation Method:	Minimum Curvature
Well Error:	0.0ft	Output errors are at	2.00 sigma
Reference Wellbore	Wellbore #1	Database:	Landmark
Reference Design:	Plan #1 (3-28-12)	Offset TVD Reference:	Offset Datum

Reference	Plan #1 (3-28-12)		
Filter type:	NO GLOBAL FILTER: Using user defined selection & filtering criteria		
Interpolation Method:	Stations	Error Model:	ISCWSA
Depth Range:	Unlimited	Scan Method:	Closest Approach 3D
Results Limited by:	Maximum center-center distance of 10,000.0ft	Error Surface:	Elliptical Conic
Warning Levels Evaluated at:	2.00 Sigma		

Survey Tool Program	Date 4/3/2012			
From (ft)	To (ft)	Survey (Wellbore)	Tool Name	Description
0.0	7,435.8	Plan #1 (3-28-12) (Wellbore #1)	MWD	MWD - Standard

Summary						
Site Name	Reference Measured Depth (ft)	Offset Measured Depth (ft)	Distance Between Centres (ft)	Separation Factor	Warning	
Offset Well - Wellbore - Design						
Mojack 24-28 Pad Sec.28-T7N-R64W						
Mojack 24-28 - Wellbore #1 - Plan #1 (3-27-12)	400.0	400.0	15.0	13.4	9.505	CC, ES
Mojack 24-28 - Wellbore #1 - Plan #1 (3-27-12)	500.0	499.4	16.7	14.7	8.366	SF
Mojack 8-28 - Wellbore #1 - Plan #1 (3-28-12)	262.5	262.5	14.9	14.0	15.720	CC
Mojack 8-28 - Wellbore #1 - Plan #1 (3-28-12)	300.0	300.0	15.0	13.8	13.423	ES
Mojack 8-28 - Wellbore #1 - Plan #1 (3-28-12)	500.0	499.3	20.7	18.7	10.267	SF

Offset Design	Mojack 24-28 Pad Sec.28-T7N-R64W - Mojack 24-28 - Wellbore #1 - Plan #1 (3-27-12)												Offset Site Error:	0.0 ft
Survey Program:	0-MWD												Offset Well Error:	0.0 ft
Reference	Offset	Semi Major Axis	Distance	Warning										
Measured Depth (ft)	Vertical Depth (ft)	Measured Depth (ft)	Vertical Depth (ft)	Reference (ft)	Offset (ft)	Highside Toolface (°)	Offset Wellbore Centre +N/-S (ft)	+E/-W (ft)	Between Centres (ft)	Between Ellipses (ft)	Minimum Separation (ft)	Separation Factor		
0.0	0.0	0.0	0.0	0.0	0.0	-177.87	-14.9	-0.6	15.0	15.0	0.00	N/A		
100.0	100.0	100.0	100.0	0.1	0.1	-177.87	-14.9	-0.6	15.0	14.7	0.22	66.538		
200.0	200.0	200.0	200.0	0.3	0.3	-177.87	-14.9	-0.6	15.0	14.3	0.67	22.179		
300.0	300.0	300.0	300.0	0.6	0.6	-177.87	-14.9	-0.6	15.0	13.8	1.12	13.308		
400.0	400.0	400.0	400.0	0.8	0.8	-177.87	-14.9	-0.6	15.0	13.4	1.57	9.505	CC, ES	
500.0	500.0	499.4	499.4	1.0	1.0	-178.26	-16.7	-0.5	16.7	14.7	1.99	8.366	SF	
600.0	600.0	598.6	598.5	1.2	1.2	-179.06	-21.8	-0.4	21.9	19.5	2.41	9.086		
700.0	700.0	697.4	696.8	1.5	1.4	-179.78	-30.4	-0.1	30.5	27.7	2.85	10.708		
800.0	800.0	795.4	794.1	1.7	1.6	179.70	-42.2	0.2	42.6	39.3	3.33	12.795		
900.0	900.0	892.5	890.1	1.9	1.9	179.35	-57.2	0.6	58.0	54.2	3.85	15.078		
1,000.0	1,000.0	988.4	984.3	2.1	2.3	-91.80	-75.1	1.2	76.8	72.6	4.18	18.385		
1,100.0	1,099.8	1,083.7	1,077.2	2.3	2.7	-94.25	-96.0	1.8	99.0	94.4	4.63	21.407		
1,150.0	1,149.7	1,132.1	1,124.4	2.4	2.9	-95.72	-107.1	2.1	110.8	106.0	4.86	22.826		
1,200.0	1,199.5	1,180.7	1,171.6	2.5	3.1	-87.67	-118.2	2.4	122.4	117.3	5.08	24.104		
1,300.0	1,298.9	1,278.1	1,266.5	2.8	3.5	-76.34	-140.5	3.0	143.6	138.0	5.54	25.938		
1,400.0	1,398.0	1,376.0	1,361.8	3.0	4.0	-69.91	-162.9	3.7	162.4	156.3	6.04	26.881		
1,500.0	1,496.7	1,474.2	1,457.4	3.3	4.4	-66.64	-185.4	4.3	178.8	172.2	6.60	27.112		
1,562.6	1,558.3	1,535.8	1,517.3	3.4	4.7	-65.67	-199.5	4.7	188.1	181.1	6.98	26.947		
1,600.0	1,594.9	1,572.6	1,553.1	3.6	4.9	-66.88	-207.9	5.0	193.4	186.2	7.22	26.775		
1,700.0	1,693.0	1,671.0	1,648.9	3.9	5.4	-69.80	-230.5	5.6	208.0	200.1	7.90	26.312		
1,800.0	1,791.1	1,769.4	1,744.7	4.3	5.9	-72.34	-253.0	6.2	223.0	214.4	8.62	25.875		

CC - Min centre to center distance or convergent point, SF - min separation factor, ES - min ellipse separation

Mojack 24-28 Pad Sec.28-T7N-R64W - Mojack 24-28 - Wellbore #1 - Plan #1 (3-27-12)														Offset Site Error: 0.0 ft	
Survey Program: 0-MWD														Offset Well Error: 0.0 ft	
Reference		Offset		Semi Major Axis			Distance							Warning	
Measured Depth	Vertical Depth	Measured Depth	Vertical Depth	Reference	Offset	Highside Toolface	Offset Wellbore Centre		Between Centres	Between Ellipses	Minimum Separation	Separation Factor			
(ft)	(ft)	(ft)	(ft)	(ft)	(ft)	(°)	+N/-S (ft)	+E/-W (ft)	(ft)	(ft)	(ft)				
1,900.0	1,889.2	1,867.8	1,840.5	4.6	6.3	-74.56	-275.5	6.9	238.5	229.1	9.36	25.472			
2,000.0	1,987.3	1,966.2	1,936.3	5.0	6.8	-76.51	-298.0	7.5	254.2	244.1	10.13	25.105			
2,100.0	2,085.4	2,064.6	2,032.1	5.4	7.3	-78.23	-320.6	8.2	270.2	259.3	10.91	24.775			
2,200.0	2,183.5	2,163.0	2,127.9	5.8	7.8	-79.75	-343.1	8.8	286.5	274.8	11.70	24.479			
2,300.0	2,281.6	2,261.4	2,223.7	6.2	8.2	-81.12	-365.6	9.4	302.9	290.3	12.51	24.214			
2,400.0	2,379.7	2,359.8	2,319.4	6.6	8.7	-82.34	-388.1	10.1	319.4	306.1	13.32	23.976			
2,500.0	2,477.8	2,458.2	2,415.2	7.0	9.2	-83.44	-410.7	10.7	336.1	321.9	14.14	23.764			
2,600.0	2,575.8	2,556.6	2,511.0	7.5	9.7	-84.44	-433.2	11.4	352.9	337.9	14.97	23.573			
2,700.0	2,673.9	2,655.0	2,606.8	7.9	10.2	-85.35	-455.7	12.0	369.7	353.9	15.80	23.401			
2,800.0	2,772.0	2,753.4	2,702.6	8.3	10.7	-86.18	-478.2	12.7	386.7	370.1	16.64	23.245			
2,900.0	2,870.1	2,851.8	2,798.4	8.7	11.1	-86.94	-500.8	13.3	403.7	386.3	17.47	23.105			
3,000.0	2,968.2	2,950.2	2,894.2	9.1	11.6	-87.63	-523.3	13.9	420.8	402.5	18.32	22.977			
3,100.0	3,066.3	3,048.6	2,990.0	9.6	12.1	-88.28	-545.8	14.6	438.0	418.8	19.16	22.861			
3,200.0	3,164.4	3,147.0	3,085.8	10.0	12.6	-88.87	-568.3	15.2	455.2	435.2	20.00	22.755			
3,300.0	3,262.5	3,245.4	3,181.5	10.4	13.1	-89.42	-590.9	15.9	472.4	451.6	20.85	22.658			
3,400.0	3,360.6	3,343.8	3,277.3	10.9	13.6	-89.94	-613.4	16.5	489.7	468.0	21.70	22.568			
3,500.0	3,458.7	3,442.2	3,373.1	11.3	14.0	-90.41	-635.9	17.2	507.0	484.5	22.55	22.486			
3,600.0	3,556.7	3,540.6	3,468.9	11.7	14.5	-90.86	-658.5	17.8	524.4	501.0	23.40	22.410			
3,700.0	3,654.8	3,639.1	3,564.7	12.2	15.0	-91.28	-681.0	18.4	541.8	517.5	24.25	22.340			
3,800.0	3,752.9	3,737.5	3,660.5	12.6	15.5	-91.67	-703.5	19.1	559.2	534.1	25.10	22.275			
3,900.0	3,851.0	3,835.9	3,756.3	13.0	16.0	-92.04	-726.0	19.7	576.6	550.7	25.96	22.214			
4,000.0	3,949.1	3,934.3	3,852.1	13.5	16.5	-92.38	-748.6	20.4	594.1	567.3	26.81	22.158			
4,100.0	4,047.2	4,032.7	3,947.8	13.9	17.0	-92.71	-771.1	21.0	611.6	583.9	27.67	22.105			
4,200.0	4,145.3	4,131.1	4,043.6	14.3	17.4	-93.02	-793.6	21.7	629.1	600.5	28.52	22.056			
4,300.0	4,243.4	4,229.5	4,139.4	14.8	17.9	-93.31	-816.1	22.3	646.6	617.2	29.38	22.010			
4,400.0	4,341.5	4,327.9	4,235.2	15.2	18.4	-93.59	-838.7	22.9	664.1	633.9	30.23	21.967			
4,500.0	4,439.6	4,426.3	4,331.0	15.6	18.9	-93.85	-861.2	23.6	681.6	650.5	31.09	21.926			
4,600.0	4,537.6	4,524.7	4,426.8	16.1	19.4	-94.10	-883.7	24.2	699.2	667.2	31.94	21.888			
4,700.0	4,635.7	4,623.1	4,522.6	16.5	19.9	-94.33	-906.2	24.9	716.7	683.9	32.80	21.852			
4,800.0	4,733.8	4,721.5	4,618.4	17.0	20.3	-94.56	-928.8	25.5	734.3	700.7	33.66	21.818			
4,900.0	4,831.9	4,819.9	4,714.1	17.4	20.8	-94.78	-951.3	26.2	751.9	717.4	34.51	21.785			
5,000.0	4,930.0	4,918.3	4,809.9	17.8	21.3	-94.98	-973.8	26.8	769.5	734.1	35.37	21.755			
5,100.0	5,028.1	5,016.7	4,905.7	18.3	21.8	-95.18	-996.3	27.4	787.1	750.9	36.23	21.726			
5,114.9	5,042.7	5,031.4	4,920.0	18.3	21.9	-95.21	-999.7	27.5	789.7	753.4	36.36	21.722			
5,200.0	5,126.4	5,115.1	5,001.6	18.6	22.3	-95.57	-1,018.9	28.1	804.6	767.6	37.06	21.713			
5,300.0	5,225.3	5,226.9	5,110.5	18.9	22.8	-95.78	-1,043.7	28.8	821.3	783.6	37.75	21.759			
5,400.0	5,324.7	5,350.2	5,231.7	19.1	23.1	-95.86	-1,066.4	29.4	835.1	796.8	38.31	21.798			
5,500.0	5,424.3	5,474.5	5,354.7	19.3	23.4	-95.85	-1,084.1	29.9	845.6	806.9	38.79	21.801			
5,600.0	5,524.2	5,599.5	5,479.1	19.5	23.7	-95.75	-1,096.4	30.3	852.9	813.7	39.18	21.770			
5,675.8	5,600.0	5,694.7	5,574.1	19.6	23.8	131.79	-1,102.2	30.5	856.1	816.7	39.41	21.722			
5,700.0	5,624.2	5,725.2	5,604.6	19.6	23.9	131.85	-1,103.3	30.5	856.8	817.3	39.47	21.704			
5,800.0	5,724.2	5,844.8	5,724.2	19.7	24.0	131.93	-1,104.9	30.5	857.6	817.9	39.73	21.585			
5,900.0	5,824.2	5,944.8	5,824.2	19.9	24.1	131.93	-1,104.9	30.5	857.6	817.7	39.97	21.456			
6,000.0	5,924.2	6,044.8	5,924.2	20.0	24.2	131.93	-1,104.9	30.5	857.6	817.4	40.20	21.332			
6,100.0	6,024.2	6,144.8	6,024.2	20.1	24.3	131.93	-1,104.9	30.5	857.6	817.2	40.44	21.208			
6,200.0	6,124.2	6,244.8	6,124.2	20.2	24.4	131.93	-1,104.9	30.5	857.6	816.9	40.68	21.083			
6,300.0	6,224.2	6,344.8	6,224.2	20.4	24.5	131.93	-1,104.9	30.5	857.6	816.7	40.92	20.958			
6,400.0	6,324.2	6,444.8	6,324.2	20.5	24.6	131.93	-1,104.9	30.5	857.6	816.5	41.17	20.832			
6,500.0	6,424.2	6,544.8	6,424.2	20.6	24.7	131.93	-1,104.9	30.5	857.6	816.2	41.42	20.706			
6,600.0	6,524.2	6,644.8	6,524.2	20.8	24.8	131.93	-1,104.9	30.5	857.6	816.0	41.67	20.581			
6,700.0	6,624.2	6,744.8	6,624.2	20.9	24.9	131.93	-1,104.9	30.5	857.6	815.7	41.93	20.455			

Company:	BAYSWATER EXPLORATION & PRODUCTION	Local Co-ordinate Reference:	Well Mojack 7-28
Project:	SEC.28-T7N-R64W	TVD Reference:	WELL @ 4908.0ft (Original Well Elev)
Reference Site:	Mojack 24-28 Pad Sec.28-T7N-R64W	MD Reference:	WELL @ 4908.0ft (Original Well Elev)
Site Error:	0.0ft	North Reference:	True
Reference Well:	Mojack 7-28	Survey Calculation Method:	Minimum Curvature
Well Error:	0.0ft	Output errors are at	2.00 sigma
Reference Wellbore	Wellbore #1	Database:	Landmark
Reference Design:	Plan #1 (3-28-12)	Offset TVD Reference:	Offset Datum

Offset Design Mojack 24-28 Pad Sec.28-T7N-R64W - Mojack 24-28 - Wellbore #1 - Plan #1 (3-27-12)												Offset Site Error:	0.0 ft
Survey Program: 0-MWD												Offset Well Error:	0.0 ft
Reference	Offset	Semi Major Axis		Distance									
Measured Depth (ft)	Vertical Depth (ft)	Measured Depth (ft)	Vertical Depth (ft)	Reference (ft)	Offset (ft)	Highside Toolface (°)	Offset Wellbore Centre +N/-S (ft)	+E/-W (ft)	Between Centres (ft)	Between Ellipses (ft)	Minimum Separation (ft)	Separation Factor	Warning
6,800.0	6,724.2	6,844.8	6,724.2	21.0	25.0	131.93	-1,104.9	30.5	857.6	815.4	42.19	20.329	
6,900.0	6,824.2	6,944.8	6,824.2	21.2	25.1	131.93	-1,104.9	30.5	857.6	815.2	42.45	20.203	
7,000.0	6,924.2	7,044.8	6,924.2	21.3	25.2	131.93	-1,104.9	30.5	857.6	814.9	42.72	20.077	
7,100.0	7,024.2	7,144.8	7,024.2	21.5	25.3	131.93	-1,104.9	30.5	857.6	814.6	42.99	19.951	
7,200.0	7,124.2	7,244.8	7,124.2	21.6	25.4	131.93	-1,104.9	30.5	857.6	814.4	43.26	19.826	
7,300.0	7,224.2	7,344.8	7,224.2	21.7	25.5	131.93	-1,104.9	30.5	857.6	814.1	43.53	19.700	
7,400.0	7,324.2	7,444.8	7,324.2	21.9	25.6	131.93	-1,104.9	30.5	857.6	813.8	43.81	19.575	
7,419.2	7,343.4	7,464.1	7,343.4	21.9	25.6	131.93	-1,104.9	30.5	857.6	813.8	43.87	19.551	
7,435.8	7,360.0	7,470.6	7,350.0	21.9	25.7	131.93	-1,104.9	30.5	857.7	813.8	43.90	19.538	

Company:	BAYSWATER EXPLORATION & PRODUCTION	Local Co-ordinate Reference:	Well Mojack 7-28
Project:	SEC.28-T7N-R64W	TVD Reference:	WELL @ 4908.0ft (Original Well Elev)
Reference Site:	Mojack 24-28 Pad Sec.28-T7N-R64W	MD Reference:	WELL @ 4908.0ft (Original Well Elev)
Site Error:	0.0ft	North Reference:	True
Reference Well:	Mojack 7-28	Survey Calculation Method:	Minimum Curvature
Well Error:	0.0ft	Output errors are at	2.00 sigma
Reference Wellbore	Wellbore #1	Database:	Landmark
Reference Design:	Plan #1 (3-28-12)	Offset TVD Reference:	Offset Datum

Offset Design Mojack 24-28 Pad Sec.28-T7N-R64W - Mojack 8-28 - Wellbore #1 - Plan #1 (3-28-12)													Offset Site Error:	0.0 ft
Survey Program: 0-MWD													Offset Well Error:	0.0 ft
Measured Depth (ft)	Vertical Depth (ft)	Measured Depth (ft)	Vertical Depth (ft)	Reference	Offset	Semi Major Axis	Highside Toolface (°)	Offset Wellbore Centre +N/-S (ft)	+E/-W (ft)	Between Centres (ft)	Between Ellipses (ft)	Minimum Separation (ft)	Separation Factor	Warning
0.0	0.0	0.0	0.0	0.0	0.0	2.13	2.13	14.9	0.6	14.9	14.9	0.00	N/A	
100.0	100.0	100.0	100.0	0.1	0.1	2.13	2.13	14.9	0.6	14.9	14.7	0.22	66.449	
200.0	200.0	200.0	200.0	0.3	0.3	2.13	2.13	14.9	0.6	14.9	14.3	0.67	22.150	
262.5	262.5	262.5	262.5	0.5	0.5	4.75	4.75	14.9	1.2	14.9	14.0	0.95	15.720 CC	
300.0	300.0	300.0	300.0	0.6	0.6	8.83	8.83	14.8	2.3	15.0	13.8	1.11	13.423 ES	
400.0	400.0	399.7	399.6	0.8	0.8	27.61	27.61	14.3	7.5	16.2	14.6	1.56	10.366	
500.0	500.0	499.3	498.8	1.0	1.0	50.25	50.25	13.2	15.9	20.7	18.7	2.02	10.267 SF	
600.0	600.0	598.6	597.5	1.2	1.3	70.05	70.05	9.5	26.3	28.1	25.6	2.50	11.232	
700.0	700.0	697.3	695.2	1.5	1.6	85.59	85.59	3.0	38.3	38.7	35.7	3.03	12.802	
800.0	800.0	795.1	791.5	1.7	1.9	97.05	97.05	-6.4	51.9	53.0	49.4	3.60	14.742	
900.0	900.0	893.4	888.2	1.9	2.3	104.45	104.45	-17.1	66.3	69.5	65.3	4.20	16.570	
1,000.0	1,000.0	991.4	984.6	2.1	2.7	-161.29	-161.29	-27.7	80.7	88.3	84.0	4.30	20.537	
1,100.0	1,099.8	1,088.9	1,080.4	2.3	3.1	-159.11	-159.11	-38.3	95.0	110.6	105.9	4.74	23.336	
1,150.0	1,149.7	1,137.3	1,128.0	2.4	3.3	-158.52	-158.52	-43.6	102.1	123.0	118.1	4.96	24.794	
1,200.0	1,199.5	1,185.6	1,175.6	2.5	3.5	-148.49	-148.49	-48.8	109.2	135.8	130.6	5.18	26.228	
1,300.0	1,298.9	1,282.3	1,270.6	2.8	3.9	-134.42	-134.42	-59.3	123.3	161.4	155.8	5.61	28.755	
1,400.0	1,398.0	1,378.7	1,365.4	3.0	4.3	-126.24	-126.24	-69.8	137.5	187.3	181.2	6.08	30.809	
1,500.0	1,496.7	1,475.0	1,460.0	3.3	4.7	-121.69	-121.69	-80.2	151.6	213.5	206.9	6.58	32.449	
1,562.6	1,558.3	1,535.0	1,519.1	3.4	4.9	-120.03	-120.03	-86.7	160.4	230.2	223.3	6.91	33.297	
1,600.0	1,594.9	1,570.8	1,554.3	3.6	5.1	-120.96	-120.96	-90.6	165.6	240.3	233.2	7.12	33.728	
1,700.0	1,693.0	1,666.6	1,648.5	3.9	5.5	-123.12	-123.12	-101.0	179.7	267.5	259.8	7.71	34.714	
1,800.0	1,791.1	1,762.4	1,742.6	4.3	5.9	-124.87	-124.87	-111.4	193.7	295.1	286.8	8.31	35.523	
1,900.0	1,889.2	1,858.1	1,836.8	4.6	6.3	-126.33	-126.33	-121.8	207.7	322.8	313.9	8.92	36.196	
2,000.0	1,987.3	1,953.9	1,931.0	5.0	6.7	-127.55	-127.55	-132.2	221.8	350.7	341.2	9.54	36.764	
2,100.0	2,085.4	2,049.7	2,025.1	5.4	7.1	-128.60	-128.60	-142.5	235.8	378.8	368.6	10.17	37.248	
2,200.0	2,183.5	2,145.5	2,119.3	5.8	7.5	-129.50	-129.50	-152.9	249.9	406.9	396.1	10.80	37.667	
2,300.0	2,281.6	2,241.2	2,213.5	6.2	7.9	-130.29	-130.29	-163.3	263.9	435.1	423.7	11.44	38.031	
2,400.0	2,379.7	2,337.0	2,307.6	6.6	8.3	-130.98	-130.98	-173.7	277.9	463.4	451.4	12.08	38.352	
2,500.0	2,477.8	2,432.8	2,401.8	7.0	8.7	-131.59	-131.59	-184.1	292.0	491.8	479.1	12.73	38.635	
2,600.0	2,575.8	2,528.6	2,496.0	7.5	9.1	-132.13	-132.13	-194.5	306.0	520.2	506.8	13.38	38.888	
2,700.0	2,673.9	2,624.3	2,590.1	7.9	9.5	-132.62	-132.62	-204.9	320.0	548.6	534.6	14.03	39.115	
2,800.0	2,772.0	2,720.1	2,684.3	8.3	9.9	-133.06	-133.06	-215.3	334.1	577.1	562.4	14.68	39.319	
2,900.0	2,870.1	2,815.9	2,778.5	8.7	10.3	-133.46	-133.46	-225.7	348.1	605.5	590.2	15.33	39.504	
3,000.0	2,968.2	2,911.7	2,872.6	9.1	10.7	-133.82	-133.82	-236.1	362.2	634.1	618.1	15.98	39.673	
3,100.0	3,066.3	3,007.4	2,966.8	9.6	11.1	-134.16	-134.16	-246.5	376.2	662.6	646.0	16.64	39.827	
3,200.0	3,164.4	3,103.2	3,061.0	10.0	11.5	-134.46	-134.46	-256.8	390.2	691.2	673.9	17.29	39.969	
3,300.0	3,262.5	3,199.0	3,155.2	10.4	11.9	-134.74	-134.74	-267.2	404.3	719.7	701.8	17.95	40.099	
3,400.0	3,360.6	3,294.8	3,249.3	10.9	12.3	-135.00	-135.00	-277.6	418.3	748.3	729.7	18.61	40.219	
3,500.0	3,458.7	3,390.5	3,343.5	11.3	12.7	-135.24	-135.24	-288.0	432.3	776.9	757.6	19.26	40.331	
3,600.0	3,556.7	3,486.3	3,437.7	11.7	13.1	-135.46	-135.46	-298.4	446.4	805.5	785.6	19.92	40.434	
3,700.0	3,654.8	3,582.1	3,531.8	12.2	13.5	-135.67	-135.67	-308.8	460.4	834.1	813.6	20.58	40.531	
3,800.0	3,752.9	3,677.9	3,626.0	12.6	13.9	-135.86	-135.86	-319.2	474.4	862.8	841.5	21.24	40.621	
3,900.0	3,851.0	3,773.6	3,720.2	13.0	14.3	-136.05	-136.05	-329.6	488.5	891.4	869.5	21.90	40.705	
4,000.0	3,949.1	3,869.4	3,814.3	13.5	14.7	-136.22	-136.22	-340.0	502.5	920.1	897.5	22.56	40.784	
4,100.0	4,047.2	3,965.2	3,908.5	13.9	15.1	-136.38	-136.38	-350.4	516.6	948.7	925.5	23.22	40.858	
4,200.0	4,145.3	4,061.0	4,002.7	14.3	15.5	-136.53	-136.53	-360.8	530.6	977.4	953.5	23.88	40.927	
4,300.0	4,243.4	4,156.7	4,096.8	14.8	15.9	-136.67	-136.67	-371.1	544.6	1,006.0	981.5	24.54	40.993	
4,400.0	4,341.5	4,252.5	4,191.0	15.2	16.3	-136.80	-136.80	-381.5	558.7	1,034.7	1,009.5	25.20	41.055	
4,500.0	4,439.6	4,348.3	4,285.2	15.6	16.7	-136.93	-136.93	-391.9	572.7	1,063.4	1,037.5	25.86	41.113	
4,600.0	4,537.6	4,444.0	4,379.3	16.1	17.1	-137.05	-137.05	-402.3	586.7	1,092.1	1,065.5	26.53	41.169	
4,700.0	4,635.7	4,539.8	4,473.5	16.5	17.5	-137.16	-137.16	-412.7	600.8	1,120.7	1,093.6	27.19	41.221	

CC - Min centre to center distance or convergent point, SF - min separation factor, ES - min ellipse separation

Offset Design													Offset Site Error:	
Survey Program: 0-MWD													Offset Well Error:	
Reference		Offset		Semi Major Axis			Distance							
Measured Depth	Vertical Depth	Measured Depth	Vertical Depth	Reference	Offset	Highside Toolface	Offset Wellbore Centre		Between Centres	Between Ellipses	Minimum Separation	Separation Factor	Warning	
Depth (ft)	Depth (ft)	Depth (ft)	Depth (ft)	(ft)	(ft)	(°)	+N/-S (ft)	+E/-W (ft)	(ft)	(ft)	(ft)			
4,800.0	4,733.8	4,635.6	4,567.7	17.0	17.9	-137.27	-423.1	614.8	1,149.4	1,121.6	27.85	41.271		
4,900.0	4,831.9	4,731.4	4,661.9	17.4	18.3	-137.37	-433.5	628.9	1,178.1	1,149.6	28.51	41.318		
5,000.0	4,930.0	4,827.1	4,756.0	17.8	18.8	-137.47	-443.9	642.9	1,206.8	1,177.6	29.18	41.363		
5,100.0	5,028.1	4,922.9	4,850.2	18.3	19.2	-137.57	-454.3	656.9	1,235.5	1,205.7	29.84	41.406		
5,114.9	5,042.7	4,937.2	4,864.2	18.3	19.2	-137.58	-455.8	659.0	1,239.8	1,209.9	29.94	41.413		
5,200.0	5,126.4	5,019.0	4,944.6	18.6	19.6	-137.94	-464.7	671.0	1,263.3	1,232.8	30.55	41.357		
5,300.0	5,225.3	5,150.5	5,074.2	18.9	20.0	-138.24	-478.0	689.0	1,287.8	1,256.6	31.22	41.252		
5,400.0	5,324.7	5,303.5	5,226.1	19.1	20.4	-138.49	-489.1	704.0	1,305.9	1,274.1	31.81	41.057		
5,500.0	5,424.3	5,459.1	5,381.3	19.3	20.6	-138.71	-495.4	712.6	1,317.2	1,284.9	32.30	40.779		
5,600.0	5,524.2	5,602.1	5,524.2	19.5	20.8	-138.89	-496.9	714.5	1,321.8	1,289.1	32.71	40.412		
5,675.8	5,600.0	5,677.8	5,600.0	19.6	20.9	88.48	-496.9	714.5	1,322.5	1,289.6	32.94	40.156		
5,700.0	5,624.2	5,702.1	5,624.2	19.6	20.9	88.48	-496.9	714.5	1,322.5	1,289.5	33.00	40.073		
5,800.0	5,724.2	5,802.1	5,724.2	19.7	21.0	88.48	-496.9	714.5	1,322.5	1,289.2	33.28	39.741		
5,900.0	5,824.2	5,902.1	5,824.2	19.9	21.2	88.48	-496.9	714.5	1,322.5	1,289.0	33.56	39.411		
6,000.0	5,924.2	6,002.1	5,924.2	20.0	21.3	88.48	-496.9	714.5	1,322.5	1,288.7	33.84	39.082		
6,100.0	6,024.2	6,102.1	6,024.2	20.1	21.4	88.48	-496.9	714.5	1,322.5	1,288.4	34.13	38.755		
6,200.0	6,124.2	6,202.1	6,124.2	20.2	21.5	88.48	-496.9	714.5	1,322.5	1,288.1	34.41	38.429		
6,300.0	6,224.2	6,302.1	6,224.2	20.4	21.6	88.48	-496.9	714.5	1,322.5	1,287.8	34.71	38.104		
6,400.0	6,324.2	6,402.1	6,324.2	20.5	21.8	88.48	-496.9	714.5	1,322.5	1,287.5	35.00	37.782		
6,500.0	6,424.2	6,502.1	6,424.2	20.6	21.9	88.48	-496.9	714.5	1,322.5	1,287.2	35.30	37.462		
6,600.0	6,524.2	6,602.1	6,524.2	20.8	22.0	88.48	-496.9	714.5	1,322.5	1,286.9	35.61	37.143		
6,700.0	6,624.2	6,702.1	6,624.2	20.9	22.1	88.48	-496.9	714.5	1,322.5	1,286.6	35.91	36.827		
6,800.0	6,724.2	6,802.1	6,724.2	21.0	22.3	88.48	-496.9	714.5	1,322.5	1,286.3	36.22	36.513		
6,900.0	6,824.2	6,902.1	6,824.2	21.2	22.4	88.48	-496.9	714.5	1,322.5	1,286.0	36.53	36.202		
7,000.0	6,924.2	7,002.1	6,924.2	21.3	22.5	88.48	-496.9	714.5	1,322.5	1,285.7	36.85	35.893		
7,100.0	7,024.2	7,102.1	7,024.2	21.5	22.7	88.48	-496.9	714.5	1,322.5	1,285.4	37.16	35.586		
7,200.0	7,124.2	7,202.1	7,124.2	21.6	22.8	88.48	-496.9	714.5	1,322.5	1,285.0	37.48	35.283		
7,300.0	7,224.2	7,302.1	7,224.2	21.7	22.9	88.48	-496.9	714.5	1,322.5	1,284.7	37.81	34.982		
7,400.0	7,324.2	7,402.1	7,324.2	21.9	23.1	88.48	-496.9	714.5	1,322.5	1,284.4	38.13	34.683		
7,419.2	7,343.4	7,421.3	7,343.4	21.9	23.1	88.48	-496.9	714.5	1,322.5	1,284.3	38.19	34.626		
7,435.8	7,360.0	7,427.8	7,350.0	21.9	23.1	88.48	-496.9	714.5	1,322.6	1,284.3	38.23	34.593		

Company:	BAYSWATER EXPLORATION & PRODUCTION	Local Co-ordinate Reference:	Well Mojack 7-28
Project:	SEC.28-T7N-R64W	TVD Reference:	WELL @ 4908.0ft (Original Well Elev)
Reference Site:	Mojack 24-28 Pad Sec.28-T7N-R64W	MD Reference:	WELL @ 4908.0ft (Original Well Elev)
Site Error:	0.0ft	North Reference:	True
Reference Well:	Mojack 7-28	Survey Calculation Method:	Minimum Curvature
Well Error:	0.0ft	Output errors are at	2.00 sigma
Reference Wellbore	Wellbore #1	Database:	Landmark
Reference Design:	Plan #1 (3-28-12)	Offset TVD Reference:	Offset Datum

Reference Depths are relative to WELL @ 4908.0ft (Original Well Elev) Coordinates are relative to: Mojack 7-28
Offset Depths are relative to Offset Datum Coordinate System is US State Plane 1983, Colorado Northern Zone
Central Meridian is -105.500000 ° Grid Convergence at Surface is: 0.61°



Company:	BAYSWATER EXPLORATION & PRODUCTION	Local Co-ordinate Reference:	Well Mojack 7-28
Project:	SEC.28-T7N-R64W	TVD Reference:	WELL @ 4908.0ft (Original Well Elev)
Reference Site:	Mojack 24-28 Pad Sec.28-T7N-R64W	MD Reference:	WELL @ 4908.0ft (Original Well Elev)
Site Error:	0.0ft	North Reference:	True
Reference Well:	Mojack 7-28	Survey Calculation Method:	Minimum Curvature
Well Error:	0.0ft	Output errors are at	2.00 sigma
Reference Wellbore	Wellbore #1	Database:	Landmark
Reference Design:	Plan #1 (3-28-12)	Offset TVD Reference:	Offset Datum

Reference Depths are relative to WELL @ 4908.0ft (Original Well Elev) Coordinates are relative to: Mojack 7-28
Offset Depths are relative to Offset Datum Coordinate System is US State Plane 1983, Colorado Northern Zone
Central Meridian is -105.500000 ° Grid Convergence at Surface is: 0.61°

