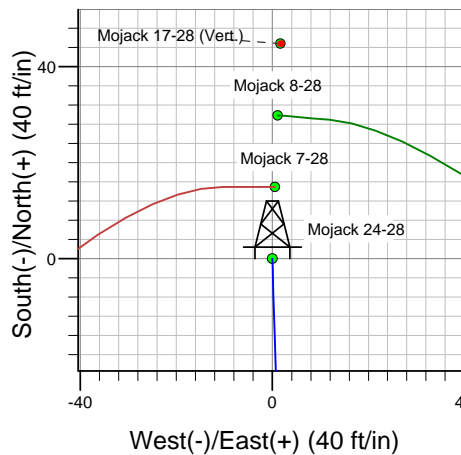
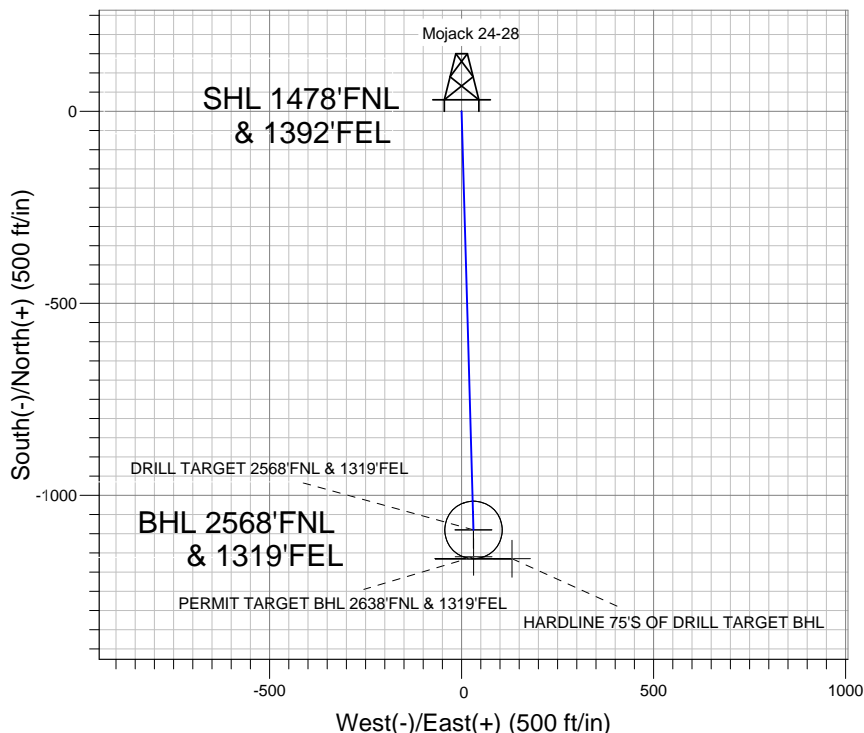
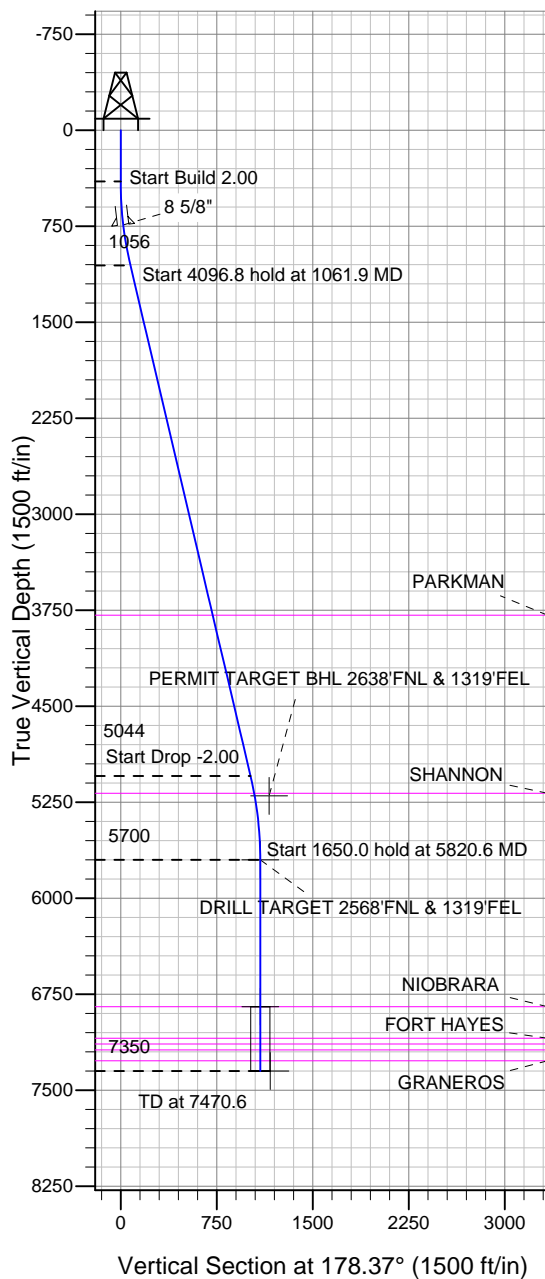


### Well Name: Mojack 24-28

Surface Location: Mojack 24-28 Pad Sec.28-T7N-R64W  
 North American Datum 1983 , US State Plane 1983 , Colorado Northern Zone  
 Ground Elevation: 4896.0  
 +N/-S 0.0 +E/-W 0.0 Northing 1443626.96 Easting 3263903.55 Latitude 40.547277 Longitude -104.550365 Slot  
 Original Well Elev WELL @ 4908.0ft (Original Well Elev)

## BAYSWATER EXPLORATION & PRODUCTION



Mojack 24-28 Pad Sec.28-T7N-R64W  
 Mojack 24-28  
 Plan #1 (3-27-12)  
 14:04, April 03 2012



Azimuths to True North  
 Magnetic North: 8.65°  
 Magnetic Field  
 Strength: 53146.4snT  
 Dip Angle: 67.18°  
 Date: 4/2/2012  
 Model: IGRF2010

### WELLBORE TARGET DETAILS (LAT/LONG)

Name	TVD	+N/-S	+E/-W	Latitude	Longitude	Shape
PERMIT TARGET BHL 2638'FNL & 1319'FEL	5200.0	-1160.0	31.1	40.544093	-104.550253	Point
DRILL TARGET 2568'FNL & 1319'FEL	5700.0	-1090.0	31.1	40.544285	-104.550253	Point
TARGET CIRCLE 2568'FNL & 1319'FEL	6848.0	-1090.0	31.1	40.544285	-104.550253	Circle (Radius: 75.0)
HARDLINE 75'S OF DRILL TARGET BHL	7350.0	-1165.0	131.1	40.544079	-104.549893	Polygon

### SECTION DETAILS

Sec	MD	Inc	Azi	TVD	+N/-S	+E/-W	DLeg	TFace	VSec	Target
1	0.0	0.00	0.00	0.0	0.0	0.0	0.00	0.00	0.0	
2	400.0	0.00	0.00	400.0	0.0	0.0	0.00	0.00	0.0	
3	1061.9	13.24	178.37	1056.0	-76.1	2.2	2.00	178.37	76.1	
4	5158.7	13.24	178.37	5044.0	-1013.9	28.9	0.00	0.00	1014.3	
5	5820.6	0.00	0.00	5700.0	-1090.0	31.1	2.00	180.00	1090.4	DRILL TARGET 2568'FNL & 1319'FEL
6	7470.6	0.00	0.00	7350.0	-1090.0	31.1	0.00	0.00	1090.4	



# **BAYSWATER EXPLORATION & PRODUCTION**

**SEC.28-T7N-R64W**

**Mojack 24-28 Pad Sec.28-T7N-R64W**

**Mojack 24-28**

**Wellbore #1**

**Plan: Plan #1 (3-27-12)**

## **Standard Planning Report**

**03 April, 2012**

Plan Sections										
Measured Depth (ft)	Inclination (°)	Azimuth (°)	Vertical Depth (ft)	+N/-S (ft)	+E/-W (ft)	Dogleg Rate (°/100ft)	Build Rate (°/100ft)	Turn Rate (°/100ft)	TFO (°)	Target
0.0	0.00	0.00	0.0	0.0	0.0	0.00	0.00	0.00	0.00	
400.0	0.00	0.00	400.0	0.0	0.0	0.00	0.00	0.00	0.00	
1,061.9	13.24	178.37	1,056.0	-76.1	2.2	2.00	2.00	0.00	178.37	
5,158.7	13.24	178.37	5,044.0	-1,013.9	28.9	0.00	0.00	0.00	0.00	
5,820.6	0.00	0.00	5,700.0	-1,090.0	31.1	2.00	-2.00	0.00	180.00	DRILL TARGET 25
7,470.6	0.00	0.00	7,350.0	-1,090.0	31.1	0.00	0.00	0.00	0.00	

<b>Database:</b>	Landmark	<b>Local Co-ordinate Reference:</b>	Well Mojack 24-28
<b>Company:</b>	BAYSWATER EXPLORATION & PRODUCTION	<b>TVD Reference:</b>	WELL @ 4908.0ft (Original Well Elev)
<b>Project:</b>	SEC.28-T7N-R64W	<b>MD Reference:</b>	WELL @ 4908.0ft (Original Well Elev)
<b>Site:</b>	Mojack 24-28 Pad Sec.28-T7N-R64W	<b>North Reference:</b>	True
<b>Well:</b>	Mojack 24-28	<b>Survey Calculation Method:</b>	Minimum Curvature
<b>Wellbore:</b>	Wellbore #1		
<b>Design:</b>	Plan #1 (3-27-12)		

#### Planned Survey

Measured Depth (ft)	Inclination (°)	Azimuth (°)	Vertical Depth (ft)	+N/-S (ft)	+E/-W (ft)	Vertical Section (ft)	Dogleg Rate (°/100ft)	Build Rate (°/100ft)	Turn Rate (°/100ft)
0.0	0.00	0.00	0.0	0.0	0.0	0.0	0.00	0.00	0.00
40.0	0.00	0.00	40.0	0.0	0.0	0.0	0.00	0.00	0.00
80.0	0.00	0.00	80.0	0.0	0.0	0.0	0.00	0.00	0.00
120.0	0.00	0.00	120.0	0.0	0.0	0.0	0.00	0.00	0.00
160.0	0.00	0.00	160.0	0.0	0.0	0.0	0.00	0.00	0.00
200.0	0.00	0.00	200.0	0.0	0.0	0.0	0.00	0.00	0.00
240.0	0.00	0.00	240.0	0.0	0.0	0.0	0.00	0.00	0.00
280.0	0.00	0.00	280.0	0.0	0.0	0.0	0.00	0.00	0.00
320.0	0.00	0.00	320.0	0.0	0.0	0.0	0.00	0.00	0.00
360.0	0.00	0.00	360.0	0.0	0.0	0.0	0.00	0.00	0.00
400.0	0.00	0.00	400.0	0.0	0.0	0.0	0.00	0.00	0.00
440.0	0.80	178.37	440.0	-0.3	0.0	0.3	2.00	2.00	0.00
480.0	1.60	178.37	480.0	-1.1	0.0	1.1	2.00	2.00	0.00
520.0	2.40	178.37	520.0	-2.5	0.1	2.5	2.00	2.00	0.00
560.0	3.20	178.37	559.9	-4.5	0.1	4.5	2.00	2.00	0.00
600.0	4.00	178.37	599.8	-7.0	0.2	7.0	2.00	2.00	0.00
640.0	4.80	178.37	639.7	-10.0	0.3	10.0	2.00	2.00	0.00
680.0	5.60	178.37	679.6	-13.7	0.4	13.7	2.00	2.00	0.00
720.0	6.40	178.37	719.3	-17.8	0.5	17.9	2.00	2.00	0.00
740.8	6.82	178.37	740.0	-20.2	0.6	20.2	2.00	2.00	0.00
8 5/8"									
760.0	7.20	178.37	759.1	-22.6	0.6	22.6	2.00	2.00	0.00
800.0	8.00	178.37	798.7	-27.9	0.8	27.9	2.00	2.00	0.00
840.0	8.80	178.37	838.3	-33.7	1.0	33.7	2.00	2.00	0.00
880.0	9.60	178.37	877.8	-40.1	1.1	40.1	2.00	2.00	0.00
920.0	10.40	178.37	917.1	-47.0	1.3	47.1	2.00	2.00	0.00
960.0	11.20	178.37	956.4	-54.5	1.6	54.6	2.00	2.00	0.00
1,000.0	12.00	178.37	995.6	-62.6	1.8	62.6	2.00	2.00	0.00
1,040.0	12.80	178.37	1,034.7	-71.2	2.0	71.2	2.00	2.00	0.00
1,061.9	13.24	178.37	1,056.0	-76.1	2.2	76.1	2.00	2.00	0.00
1,080.0	13.24	178.37	1,073.6	-80.2	2.3	80.3	0.00	0.00	0.00
1,120.0	13.24	178.37	1,112.6	-89.4	2.6	89.4	0.00	0.00	0.00
1,160.0	13.24	178.37	1,151.5	-98.6	2.8	98.6	0.00	0.00	0.00
1,200.0	13.24	178.37	1,190.5	-107.7	3.1	107.8	0.00	0.00	0.00
1,240.0	13.24	178.37	1,229.4	-116.9	3.3	116.9	0.00	0.00	0.00
1,280.0	13.24	178.37	1,268.3	-126.0	3.6	126.1	0.00	0.00	0.00
1,320.0	13.24	178.37	1,307.3	-135.2	3.9	135.2	0.00	0.00	0.00
1,360.0	13.24	178.37	1,346.2	-144.3	4.1	144.4	0.00	0.00	0.00
1,400.0	13.24	178.37	1,385.1	-153.5	4.4	153.6	0.00	0.00	0.00
1,440.0	13.24	178.37	1,424.1	-162.6	4.6	162.7	0.00	0.00	0.00
1,480.0	13.24	178.37	1,463.0	-171.8	4.9	171.9	0.00	0.00	0.00
1,520.0	13.24	178.37	1,502.0	-181.0	5.2	181.0	0.00	0.00	0.00
1,560.0	13.24	178.37	1,540.9	-190.1	5.4	190.2	0.00	0.00	0.00
1,600.0	13.24	178.37	1,579.8	-199.3	5.7	199.4	0.00	0.00	0.00
1,640.0	13.24	178.37	1,618.8	-208.4	5.9	208.5	0.00	0.00	0.00
1,680.0	13.24	178.37	1,657.7	-217.6	6.2	217.7	0.00	0.00	0.00
1,720.0	13.24	178.37	1,696.6	-226.7	6.5	226.8	0.00	0.00	0.00
1,760.0	13.24	178.37	1,735.6	-235.9	6.7	236.0	0.00	0.00	0.00
1,800.0	13.24	178.37	1,774.5	-245.1	7.0	245.2	0.00	0.00	0.00
1,840.0	13.24	178.37	1,813.4	-254.2	7.3	254.3	0.00	0.00	0.00
1,880.0	13.24	178.37	1,852.4	-263.4	7.5	263.5	0.00	0.00	0.00
1,920.0	13.24	178.37	1,891.3	-272.5	7.8	272.6	0.00	0.00	0.00
1,960.0	13.24	178.37	1,930.3	-281.7	8.0	281.8	0.00	0.00	0.00

<b>Database:</b>	Landmark	<b>Local Co-ordinate Reference:</b>	Well Mojack 24-28
<b>Company:</b>	BAYSWATER EXPLORATION & PRODUCTION	<b>TVD Reference:</b>	WELL @ 4908.0ft (Original Well Elev)
<b>Project:</b>	SEC.28-T7N-R64W	<b>MD Reference:</b>	WELL @ 4908.0ft (Original Well Elev)
<b>Site:</b>	Mojack 24-28 Pad Sec.28-T7N-R64W	<b>North Reference:</b>	True
<b>Well:</b>	Mojack 24-28	<b>Survey Calculation Method:</b>	Minimum Curvature
<b>Wellbore:</b>	Wellbore #1		
<b>Design:</b>	Plan #1 (3-27-12)		

Planned Survey									
Measured Depth (ft)	Inclination (°)	Azimuth (°)	Vertical Depth (ft)	+N/-S (ft)	+E/-W (ft)	Vertical Section (ft)	Dogleg Rate (°/100ft)	Build Rate (°/100ft)	Turn Rate (°/100ft)
2,000.0	13.24	178.37	1,969.2	-290.8	8.3	291.0	0.00	0.00	0.00
2,040.0	13.24	178.37	2,008.1	-300.0	8.6	300.1	0.00	0.00	0.00
2,080.0	13.24	178.37	2,047.1	-309.1	8.8	309.3	0.00	0.00	0.00
2,120.0	13.24	178.37	2,086.0	-318.3	9.1	318.4	0.00	0.00	0.00
2,160.0	13.24	178.37	2,124.9	-327.5	9.3	327.6	0.00	0.00	0.00
2,200.0	13.24	178.37	2,163.9	-336.6	9.6	336.8	0.00	0.00	0.00
2,240.0	13.24	178.37	2,202.8	-345.8	9.9	345.9	0.00	0.00	0.00
2,280.0	13.24	178.37	2,241.8	-354.9	10.1	355.1	0.00	0.00	0.00
2,320.0	13.24	178.37	2,280.7	-364.1	10.4	364.2	0.00	0.00	0.00
2,360.0	13.24	178.37	2,319.6	-373.2	10.6	373.4	0.00	0.00	0.00
2,400.0	13.24	178.37	2,358.6	-382.4	10.9	382.6	0.00	0.00	0.00
2,440.0	13.24	178.37	2,397.5	-391.6	11.2	391.7	0.00	0.00	0.00
2,480.0	13.24	178.37	2,436.4	-400.7	11.4	400.9	0.00	0.00	0.00
2,520.0	13.24	178.37	2,475.4	-409.9	11.7	410.0	0.00	0.00	0.00
2,560.0	13.24	178.37	2,514.3	-419.0	12.0	419.2	0.00	0.00	0.00
2,600.0	13.24	178.37	2,553.3	-428.2	12.2	428.4	0.00	0.00	0.00
2,640.0	13.24	178.37	2,592.2	-437.3	12.5	437.5	0.00	0.00	0.00
2,680.0	13.24	178.37	2,631.1	-446.5	12.7	446.7	0.00	0.00	0.00
2,720.0	13.24	178.37	2,670.1	-455.7	13.0	455.8	0.00	0.00	0.00
2,760.0	13.24	178.37	2,709.0	-464.8	13.3	465.0	0.00	0.00	0.00
2,800.0	13.24	178.37	2,747.9	-474.0	13.5	474.2	0.00	0.00	0.00
2,840.0	13.24	178.37	2,786.9	-483.1	13.8	483.3	0.00	0.00	0.00
2,880.0	13.24	178.37	2,825.8	-492.3	14.0	492.5	0.00	0.00	0.00
2,920.0	13.24	178.37	2,864.7	-501.4	14.3	501.6	0.00	0.00	0.00
2,960.0	13.24	178.37	2,903.7	-510.6	14.6	510.8	0.00	0.00	0.00
3,000.0	13.24	178.37	2,942.6	-519.7	14.8	520.0	0.00	0.00	0.00
3,040.0	13.24	178.37	2,981.6	-528.9	15.1	529.1	0.00	0.00	0.00
3,080.0	13.24	178.37	3,020.5	-538.1	15.4	538.3	0.00	0.00	0.00
3,120.0	13.24	178.37	3,059.4	-547.2	15.6	547.4	0.00	0.00	0.00
3,160.0	13.24	178.37	3,098.4	-556.4	15.9	556.6	0.00	0.00	0.00
3,200.0	13.24	178.37	3,137.3	-565.5	16.1	565.8	0.00	0.00	0.00
3,240.0	13.24	178.37	3,176.2	-574.7	16.4	574.9	0.00	0.00	0.00
3,280.0	13.24	178.37	3,215.2	-583.8	16.7	584.1	0.00	0.00	0.00
3,320.0	13.24	178.37	3,254.1	-593.0	16.9	593.2	0.00	0.00	0.00
3,360.0	13.24	178.37	3,293.1	-602.2	17.2	602.4	0.00	0.00	0.00
3,400.0	13.24	178.37	3,332.0	-611.3	17.4	611.6	0.00	0.00	0.00
3,440.0	13.24	178.37	3,370.9	-620.5	17.7	620.7	0.00	0.00	0.00
3,480.0	13.24	178.37	3,409.9	-629.6	18.0	629.9	0.00	0.00	0.00
3,520.0	13.24	178.37	3,448.8	-638.8	18.2	639.0	0.00	0.00	0.00
3,560.0	13.24	178.37	3,487.7	-647.9	18.5	648.2	0.00	0.00	0.00
3,600.0	13.24	178.37	3,526.7	-657.1	18.7	657.4	0.00	0.00	0.00
3,640.0	13.24	178.37	3,565.6	-666.2	19.0	666.5	0.00	0.00	0.00
3,680.0	13.24	178.37	3,604.6	-675.4	19.3	675.7	0.00	0.00	0.00
3,720.0	13.24	178.37	3,643.5	-684.6	19.5	684.8	0.00	0.00	0.00
3,760.0	13.24	178.37	3,682.4	-693.7	19.8	694.0	0.00	0.00	0.00
3,800.0	13.24	178.37	3,721.4	-702.9	20.1	703.2	0.00	0.00	0.00
3,840.0	13.24	178.37	3,760.3	-712.0	20.3	712.3	0.00	0.00	0.00
3,869.5	13.24	178.37	3,789.0	-718.8	20.5	719.1	0.00	0.00	0.00
<b>PARKMAN</b>									
3,880.0	13.24	178.37	3,799.2	-721.2	20.6	721.5	0.00	0.00	0.00
3,920.0	13.24	178.37	3,838.2	-730.3	20.8	730.6	0.00	0.00	0.00
3,960.0	13.24	178.37	3,877.1	-739.5	21.1	739.8	0.00	0.00	0.00
4,000.0	13.24	178.37	3,916.0	-748.7	21.4	749.0	0.00	0.00	0.00

<b>Database:</b>	Landmark	<b>Local Co-ordinate Reference:</b>	Well Mojack 24-28
<b>Company:</b>	BAYSWATER EXPLORATION & PRODUCTION	<b>TVD Reference:</b>	WELL @ 4908.0ft (Original Well Elev)
<b>Project:</b>	SEC.28-T7N-R64W	<b>MD Reference:</b>	WELL @ 4908.0ft (Original Well Elev)
<b>Site:</b>	Mojack 24-28 Pad Sec.28-T7N-R64W	<b>North Reference:</b>	True
<b>Well:</b>	Mojack 24-28	<b>Survey Calculation Method:</b>	Minimum Curvature
<b>Wellbore:</b>	Wellbore #1		
<b>Design:</b>	Plan #1 (3-27-12)		

Planned Survey									
Measured Depth (ft)	Inclination (°)	Azimuth (°)	Vertical Depth (ft)	+N/-S (ft)	+E/-W (ft)	Vertical Section (ft)	Dogleg Rate (°/100ft)	Build Rate (°/100ft)	Turn Rate (°/100ft)
4,040.0	13.24	178.37	3,955.0	-757.8	21.6	758.1	0.00	0.00	0.00
4,080.0	13.24	178.37	3,993.9	-767.0	21.9	767.3	0.00	0.00	0.00
4,120.0	13.24	178.37	4,032.9	-776.1	22.1	776.4	0.00	0.00	0.00
4,160.0	13.24	178.37	4,071.8	-785.3	22.4	785.6	0.00	0.00	0.00
4,200.0	13.24	178.37	4,110.7	-794.4	22.7	794.8	0.00	0.00	0.00
4,240.0	13.24	178.37	4,149.7	-803.6	22.9	803.9	0.00	0.00	0.00
4,280.0	13.24	178.37	4,188.6	-812.8	23.2	813.1	0.00	0.00	0.00
4,320.0	13.24	178.37	4,227.5	-821.9	23.5	822.2	0.00	0.00	0.00
4,360.0	13.24	178.37	4,266.5	-831.1	23.7	831.4	0.00	0.00	0.00
4,400.0	13.24	178.37	4,305.4	-840.2	24.0	840.6	0.00	0.00	0.00
4,440.0	13.24	178.37	4,344.4	-849.4	24.2	849.7	0.00	0.00	0.00
4,480.0	13.24	178.37	4,383.3	-858.5	24.5	858.9	0.00	0.00	0.00
4,520.0	13.24	178.37	4,422.2	-867.7	24.8	868.0	0.00	0.00	0.00
4,560.0	13.24	178.37	4,461.2	-876.8	25.0	877.2	0.00	0.00	0.00
4,600.0	13.24	178.37	4,500.1	-886.0	25.3	886.4	0.00	0.00	0.00
4,640.0	13.24	178.37	4,539.0	-895.2	25.5	895.5	0.00	0.00	0.00
4,680.0	13.24	178.37	4,578.0	-904.3	25.8	904.7	0.00	0.00	0.00
4,720.0	13.24	178.37	4,616.9	-913.5	26.1	913.8	0.00	0.00	0.00
4,760.0	13.24	178.37	4,655.9	-922.6	26.3	923.0	0.00	0.00	0.00
4,800.0	13.24	178.37	4,694.8	-931.8	26.6	932.2	0.00	0.00	0.00
4,840.0	13.24	178.37	4,733.7	-940.9	26.8	941.3	0.00	0.00	0.00
4,880.0	13.24	178.37	4,772.7	-950.1	27.1	950.5	0.00	0.00	0.00
4,920.0	13.24	178.37	4,811.6	-959.3	27.4	959.6	0.00	0.00	0.00
4,960.0	13.24	178.37	4,850.5	-968.4	27.6	968.8	0.00	0.00	0.00
5,000.0	13.24	178.37	4,889.5	-977.6	27.9	978.0	0.00	0.00	0.00
5,040.0	13.24	178.37	4,928.4	-986.7	28.2	987.1	0.00	0.00	0.00
5,080.0	13.24	178.37	4,967.3	-995.9	28.4	996.3	0.00	0.00	0.00
5,120.0	13.24	178.37	5,006.3	-1,005.0	28.7	1,005.4	0.00	0.00	0.00
5,158.7	13.24	178.37	5,044.0	-1,013.9	28.9	1,014.3	0.00	0.00	0.00
5,160.0	13.21	178.37	5,045.2	-1,014.2	28.9	1,014.6	2.00	-2.00	0.00
5,200.0	12.41	178.37	5,084.2	-1,023.1	29.2	1,023.5	2.00	-2.00	0.00
5,240.0	11.61	178.37	5,123.3	-1,031.4	29.4	1,031.8	2.00	-2.00	0.00
5,280.0	10.81	178.37	5,162.6	-1,039.2	29.6	1,039.6	2.00	-2.00	0.00
5,297.7	10.46	178.37	5,180.0	-1,042.4	29.7	1,042.8	2.00	-2.00	0.00
SHANNON									
5,320.0	10.01	178.37	5,201.9	-1,046.4	29.9	1,046.8	2.00	-2.00	0.00
5,337.1	9.67	178.37	5,218.7	-1,049.3	29.9	1,049.7	2.00	-2.00	0.00
PERMIT TARGET BHL 2638'FNL & 1319'FEL									
5,360.0	9.21	178.37	5,241.4	-1,053.1	30.0	1,053.5	2.00	-2.00	0.00
5,400.0	8.41	178.37	5,280.9	-1,059.2	30.2	1,059.6	2.00	-2.00	0.00
5,440.0	7.61	178.37	5,320.5	-1,064.8	30.4	1,065.2	2.00	-2.00	0.00
5,480.0	6.81	178.37	5,360.2	-1,069.8	30.5	1,070.2	2.00	-2.00	0.00
5,520.0	6.01	178.37	5,399.9	-1,074.2	30.7	1,074.7	2.00	-2.00	0.00
5,560.0	5.21	178.37	5,439.7	-1,078.2	30.8	1,078.6	2.00	-2.00	0.00
5,600.0	4.41	178.37	5,479.6	-1,081.5	30.9	1,081.9	2.00	-2.00	0.00
5,640.0	3.61	178.37	5,519.5	-1,084.3	30.9	1,084.7	2.00	-2.00	0.00
5,680.0	2.81	178.37	5,559.4	-1,086.5	31.0	1,087.0	2.00	-2.00	0.00
5,720.0	2.01	178.37	5,599.4	-1,088.2	31.0	1,088.7	2.00	-2.00	0.00
5,760.0	1.21	178.37	5,639.4	-1,089.4	31.1	1,089.8	2.00	-2.00	0.00
5,800.0	0.41	178.37	5,679.4	-1,089.9	31.1	1,090.4	2.00	-2.00	0.00
5,820.6	0.00	0.00	5,700.0	-1,090.0	31.1	1,090.4	2.00	-2.00	-865.14
DRILL TARGET 2568'FNL & 1319'FEL									
5,840.0	0.00	0.00	5,719.4	-1,090.0	31.1	1,090.4	0.00	0.00	0.00

<b>Database:</b>	Landmark	<b>Local Co-ordinate Reference:</b>	Well Mojack 24-28
<b>Company:</b>	BAYSWATER EXPLORATION & PRODUCTION	<b>TVD Reference:</b>	WELL @ 4908.0ft (Original Well Elev)
<b>Project:</b>	SEC.28-T7N-R64W	<b>MD Reference:</b>	WELL @ 4908.0ft (Original Well Elev)
<b>Site:</b>	Mojack 24-28 Pad Sec.28-T7N-R64W	<b>North Reference:</b>	True
<b>Well:</b>	Mojack 24-28	<b>Survey Calculation Method:</b>	Minimum Curvature
<b>Wellbore:</b>	Wellbore #1		
<b>Design:</b>	Plan #1 (3-27-12)		

Planned Survey									
Measured Depth (ft)	Inclination (°)	Azimuth (°)	Vertical Depth (ft)	+N/-S (ft)	+E/-W (ft)	Vertical Section (ft)	Dogleg Rate (°/100ft)	Build Rate (°/100ft)	Turn Rate (°/100ft)
5,880.0	0.00	0.00	5,759.4	-1,090.0	31.1	1,090.4	0.00	0.00	0.00
5,920.0	0.00	0.00	5,799.4	-1,090.0	31.1	1,090.4	0.00	0.00	0.00
5,960.0	0.00	0.00	5,839.4	-1,090.0	31.1	1,090.4	0.00	0.00	0.00
6,000.0	0.00	0.00	5,879.4	-1,090.0	31.1	1,090.4	0.00	0.00	0.00
6,040.0	0.00	0.00	5,919.4	-1,090.0	31.1	1,090.4	0.00	0.00	0.00
6,080.0	0.00	0.00	5,959.4	-1,090.0	31.1	1,090.4	0.00	0.00	0.00
6,120.0	0.00	0.00	5,999.4	-1,090.0	31.1	1,090.4	0.00	0.00	0.00
6,160.0	0.00	0.00	6,039.4	-1,090.0	31.1	1,090.4	0.00	0.00	0.00
6,200.0	0.00	0.00	6,079.4	-1,090.0	31.1	1,090.4	0.00	0.00	0.00
6,240.0	0.00	0.00	6,119.4	-1,090.0	31.1	1,090.4	0.00	0.00	0.00
6,280.0	0.00	0.00	6,159.4	-1,090.0	31.1	1,090.4	0.00	0.00	0.00
6,320.0	0.00	0.00	6,199.4	-1,090.0	31.1	1,090.4	0.00	0.00	0.00
6,360.0	0.00	0.00	6,239.4	-1,090.0	31.1	1,090.4	0.00	0.00	0.00
6,400.0	0.00	0.00	6,279.4	-1,090.0	31.1	1,090.4	0.00	0.00	0.00
6,440.0	0.00	0.00	6,319.4	-1,090.0	31.1	1,090.4	0.00	0.00	0.00
6,480.0	0.00	0.00	6,359.4	-1,090.0	31.1	1,090.4	0.00	0.00	0.00
6,520.0	0.00	0.00	6,399.4	-1,090.0	31.1	1,090.4	0.00	0.00	0.00
6,560.0	0.00	0.00	6,439.4	-1,090.0	31.1	1,090.4	0.00	0.00	0.00
6,600.0	0.00	0.00	6,479.4	-1,090.0	31.1	1,090.4	0.00	0.00	0.00
6,640.0	0.00	0.00	6,519.4	-1,090.0	31.1	1,090.4	0.00	0.00	0.00
6,680.0	0.00	0.00	6,559.4	-1,090.0	31.1	1,090.4	0.00	0.00	0.00
6,720.0	0.00	0.00	6,599.4	-1,090.0	31.1	1,090.4	0.00	0.00	0.00
6,760.0	0.00	0.00	6,639.4	-1,090.0	31.1	1,090.4	0.00	0.00	0.00
6,800.0	0.00	0.00	6,679.4	-1,090.0	31.1	1,090.4	0.00	0.00	0.00
6,840.0	0.00	0.00	6,719.4	-1,090.0	31.1	1,090.4	0.00	0.00	0.00
6,880.0	0.00	0.00	6,759.4	-1,090.0	31.1	1,090.4	0.00	0.00	0.00
6,920.0	0.00	0.00	6,799.4	-1,090.0	31.1	1,090.4	0.00	0.00	0.00
6,960.0	0.00	0.00	6,839.4	-1,090.0	31.1	1,090.4	0.00	0.00	0.00
6,968.6	0.00	0.00	6,848.0	-1,090.0	31.1	1,090.4	0.00	0.00	0.00
<b>NIOBRARA - TARGET CIRCLE 2568'FNL &amp; 1319'FEL</b>									
7,000.0	0.00	0.00	6,879.4	-1,090.0	31.1	1,090.4	0.00	0.00	0.00
7,040.0	0.00	0.00	6,919.4	-1,090.0	31.1	1,090.4	0.00	0.00	0.00
7,080.0	0.00	0.00	6,959.4	-1,090.0	31.1	1,090.4	0.00	0.00	0.00
7,120.0	0.00	0.00	6,999.4	-1,090.0	31.1	1,090.4	0.00	0.00	0.00
7,160.0	0.00	0.00	7,039.4	-1,090.0	31.1	1,090.4	0.00	0.00	0.00
7,200.0	0.00	0.00	7,079.4	-1,090.0	31.1	1,090.4	0.00	0.00	0.00
7,214.6	0.00	0.00	7,094.0	-1,090.0	31.1	1,090.4	0.00	0.00	0.00
<b>FORT HAYES</b>									
7,240.0	0.00	0.00	7,119.4	-1,090.0	31.1	1,090.4	0.00	0.00	0.00
7,258.6	0.00	0.00	7,138.0	-1,090.0	31.1	1,090.4	0.00	0.00	0.00
<b>CODELL</b>									
7,280.0	0.00	0.00	7,159.4	-1,090.0	31.1	1,090.4	0.00	0.00	0.00
7,305.6	0.00	0.00	7,185.0	-1,090.0	31.1	1,090.4	0.00	0.00	0.00
<b>GREENHORN</b>									
7,320.0	0.00	0.00	7,199.4	-1,090.0	31.1	1,090.4	0.00	0.00	0.00
7,360.0	0.00	0.00	7,239.4	-1,090.0	31.1	1,090.4	0.00	0.00	0.00
7,391.6	0.00	0.00	7,271.0	-1,090.0	31.1	1,090.4	0.00	0.00	0.00
<b>GRANEROS</b>									
7,400.0	0.00	0.00	7,279.4	-1,090.0	31.1	1,090.4	0.00	0.00	0.00
7,440.0	0.00	0.00	7,319.4	-1,090.0	31.1	1,090.4	0.00	0.00	0.00
7,470.6	0.00	0.00	7,350.0	-1,090.0	31.1	1,090.4	0.00	0.00	0.00
<b>HARDLINE 75'S OF DRILL TARGET BHL</b>									

Formations						
	Measured Depth (ft)	Vertical Depth (ft)	Name	Lithology	Dip (°)	Dip Direction (°)
	3,869.5	3,789.0	PARKMAN		0.00	
	5,297.7	5,180.0	SHANNON		0.00	
	6,968.6	6,848.0	NIOBRARA		0.00	
	7,214.6	7,094.0	FORT HAYES		0.00	
	7,258.6	7,138.0	CODELL		0.00	
	7,305.6	7,185.0	GREENHORN		0.00	
	7,391.6	7,271.0	GRANEROS		0.00	



# **BAYSWATER EXPLORATION & PRODUCTION**

**SEC.28-T7N-R64W**

**Mojack 24-28 Pad Sec.28-T7N-R64W**

**Mojack 24-28**

**Wellbore #1**

**Plan #1 (3-27-12)**

## **Anticollision Report**

**03 April, 2012**

<b>Company:</b>	BAYSWATER EXPLORATION & PRODUCTION	<b>Local Co-ordinate Reference:</b>	Well Mojack 24-28
<b>Project:</b>	SEC.28-T7N-R64W	<b>TVD Reference:</b>	WELL @ 4908.0ft (Original Well Elev)
<b>Reference Site:</b>	Mojack 24-28 Pad Sec.28-T7N-R64W	<b>MD Reference:</b>	WELL @ 4908.0ft (Original Well Elev)
<b>Site Error:</b>	0.0ft	<b>North Reference:</b>	True
<b>Reference Well:</b>	Mojack 24-28	<b>Survey Calculation Method:</b>	Minimum Curvature
<b>Well Error:</b>	0.0ft	<b>Output errors are at</b>	2.00 sigma
<b>Reference Wellbore</b>	Wellbore #1	<b>Database:</b>	Landmark
<b>Reference Design:</b>	Plan #1 (3-27-12)	<b>Offset TVD Reference:</b>	Offset Datum

<b>Reference</b>	Plan #1 (3-27-12)		
<b>Filter type:</b>	NO GLOBAL FILTER: Using user defined selection & filtering criteria		
<b>Interpolation Method:</b>	Stations	<b>Error Model:</b>	ISCWSA
<b>Depth Range:</b>	Unlimited	<b>Scan Method:</b>	Closest Approach 3D
<b>Results Limited by:</b>	Maximum center-center distance of 10,000.0ft	<b>Error Surface:</b>	Elliptical Conic
<b>Warning Levels Evaluated at:</b>	2.00 Sigma		

<b>Survey Tool Program</b>	<b>Date</b> 4/3/2012			
<b>From (ft)</b>	<b>To (ft)</b>	<b>Survey (Wellbore)</b>	<b>Tool Name</b>	<b>Description</b>
0.0	7,470.6	Plan #1 (3-27-12) (Wellbore #1)	MWD	MWD - Standard

<b>Summary</b>						
<b>Site Name</b>	<b>Reference Measured Depth (ft)</b>	<b>Offset Measured Depth (ft)</b>	<b>Distance Between Centres (ft)</b>	<b>Separation Factor</b>	<b>Warning</b>	
<b>Offset Well - Wellbore - Design</b>						
Mojack 24-28 Pad Sec.28-T7N-R64W						
Mojack 7-28 - Wellbore #1 - Plan #1 (3-28-12)	400.0	400.0	15.0	13.4	9.505	CC, ES
Mojack 7-28 - Wellbore #1 - Plan #1 (3-28-12)	500.0	500.0	16.7	14.7	8.349	SF
Mojack 8-28 - Wellbore #1 - Plan #1 (3-28-12)	292.6	292.6	29.9	28.8	27.637	CC
Mojack 8-28 - Wellbore #1 - Plan #1 (3-28-12)	300.0	300.0	29.9	28.7	26.829	ES
Mojack 8-28 - Wellbore #1 - Plan #1 (3-28-12)	600.0	599.6	41.3	38.8	16.833	SF

<b>Offset Design</b>	Mojack 24-28 Pad Sec.28-T7N-R64W - Mojack 7-28 - Wellbore #1 - Plan #1 (3-28-12)												<b>Offset Site Error:</b>	0.0 ft
<b>Survey Program:</b>	0-MWD												<b>Offset Well Error:</b>	0.0 ft
<b>Reference</b>	<b>Offset</b>	<b>Semi Major Axis</b>		<b>Distance</b>		<b>Minimum Separation</b>		<b>Separation Factor</b>		<b>Warning</b>				
<b>Measured Depth (ft)</b>	<b>Vertical Depth (ft)</b>	<b>Measured Depth (ft)</b>	<b>Vertical Depth (ft)</b>	<b>Reference (ft)</b>	<b>Offset (ft)</b>	<b>Highside Toolface (°)</b>	<b>Offset Wellbore Centre +N/-S (ft)</b>	<b>+E/-W (ft)</b>	<b>Between Centres (ft)</b>	<b>Between Ellipses (ft)</b>	<b>Minimum Separation (ft)</b>	<b>Separation Factor</b>		
0.0	0.0	0.0	0.0	0.0	0.0	2.13	14.9	0.6	15.0	15.0	0.00	N/A		
100.0	100.0	100.0	100.0	0.1	0.1	2.13	14.9	0.6	15.0	14.7	0.22	66.538		
200.0	200.0	200.0	200.0	0.3	0.3	2.13	14.9	0.6	15.0	14.3	0.67	22.179		
300.0	300.0	300.0	300.0	0.6	0.6	2.13	14.9	0.6	15.0	13.8	1.12	13.308		
400.0	400.0	400.0	400.0	0.8	0.8	2.13	14.9	0.6	15.0	13.4	1.57	9.505	CC, ES	
500.0	500.0	500.0	500.0	1.0	1.0	-176.63	14.9	0.6	16.7	14.7	2.00	8.349	SF	
600.0	599.8	599.8	599.8	1.2	1.2	-177.43	14.9	0.6	21.9	19.5	2.42	9.074		
700.0	699.5	699.5	699.5	1.4	1.5	-178.15	14.9	0.6	30.6	27.8	2.84	10.773		
800.0	798.7	798.7	798.7	1.7	1.7	-178.67	14.9	0.6	42.8	39.5	3.28	13.062		
900.0	897.5	897.5	897.5	2.0	1.9	-179.02	14.9	0.6	58.5	54.7	3.72	15.728		
1,000.0	995.6	995.5	995.5	2.3	2.1	179.54	14.9	-1.0	77.6	73.4	4.15	18.703		
1,061.9	1,056.0	1,055.8	1,055.7	2.6	2.2	177.90	14.9	-3.7	91.2	86.8	4.41	20.670		
1,100.0	1,093.1	1,092.7	1,092.6	2.7	2.3	176.76	14.9	-5.9	100.1	95.5	4.58	21.847		
1,200.0	1,190.5	1,191.0	1,190.5	3.2	2.5	173.51	14.7	-14.0	123.6	118.5	5.04	24.508		
1,300.0	1,287.8	1,292.4	1,291.3	3.6	2.7	170.35	11.7	-24.2	145.0	139.5	5.51	26.302		
1,400.0	1,385.1	1,394.7	1,392.8	4.1	3.0	167.25	5.4	-35.8	164.0	158.0	6.03	27.198		
1,500.0	1,482.5	1,497.7	1,494.5	4.6	3.3	164.05	-4.4	-48.9	180.7	174.1	6.61	27.345		
1,600.0	1,579.8	1,599.3	1,594.2	5.0	3.6	160.77	-17.1	-63.2	195.3	188.1	7.25	26.951		
1,700.0	1,677.2	1,697.7	1,690.7	5.5	3.9	157.90	-30.0	-77.3	210.0	202.0	7.94	26.460		
1,800.0	1,774.5	1,796.1	1,787.3	6.0	4.2	155.41	-43.0	-91.4	225.1	216.4	8.66	26.000		
1,900.0	1,871.9	1,894.5	1,883.8	6.5	4.6	153.23	-55.9	-105.5	240.6	231.2	9.41	25.579		

CC - Min centre to center distance or convergent point, SF - min separation factor, ES - min ellipse separation

<b>Company:</b>	BAYSWATER EXPLORATION & PRODUCTION	<b>Local Co-ordinate Reference:</b>	Well Mojack 24-28
<b>Project:</b>	SEC.28-T7N-R64W	<b>TVD Reference:</b>	WELL @ 4908.0ft (Original Well Elev)
<b>Reference Site:</b>	Mojack 24-28 Pad Sec.28-T7N-R64W	<b>MD Reference:</b>	WELL @ 4908.0ft (Original Well Elev)
<b>Site Error:</b>	0.0ft	<b>North Reference:</b>	True
<b>Reference Well:</b>	Mojack 24-28	<b>Survey Calculation Method:</b>	Minimum Curvature
<b>Well Error:</b>	0.0ft	<b>Output errors are at</b>	2.00 sigma
<b>Reference Wellbore</b>	Wellbore #1	<b>Database:</b>	Landmark
<b>Reference Design:</b>	Plan #1 (3-27-12)	<b>Offset TVD Reference:</b>	Offset Datum

Offset Design Mojack 24-28 Pad Sec.28-T7N-R64W - Mojack 7-28 - Wellbore #1 - Plan #1 (3-28-12)													Offset Site Error:	0.0 ft
Survey Program: 0-MWD													Offset Well Error:	0.0 ft
Measured Depth (ft)	Vertical Depth (ft)	Measured Depth (ft)	Vertical Depth (ft)	Reference	Offset	Highside Toolface (°)	Offset Wellbore Centre +N/-S (ft)	Offset Wellbore Centre +E/-W (ft)	Between Centres (ft)	Between Ellipses (ft)	Minimum Separation (ft)	Separation Factor	Warning	
2,000.0	1,969.2	1,992.9	1,980.3	7.0	5.0	151.31	-68.9	-119.6	256.4	246.2	10.17	25.198		
2,100.0	2,066.5	2,091.3	2,076.8	7.5	5.4	149.62	-81.9	-133.7	272.4	261.5	10.96	24.857		
2,200.0	2,163.9	2,189.7	2,173.4	7.9	5.8	148.12	-94.8	-147.8	288.7	276.9	11.76	24.551		
2,300.0	2,261.2	2,288.1	2,269.9	8.4	6.2	146.78	-107.8	-161.9	305.1	292.5	12.57	24.278		
2,400.0	2,358.6	2,386.5	2,366.4	8.9	6.6	145.57	-120.7	-175.9	321.6	308.3	13.38	24.034		
2,500.0	2,455.9	2,484.9	2,462.9	9.4	7.0	144.48	-133.7	-190.0	338.3	324.1	14.21	23.816		
2,600.0	2,553.3	2,583.3	2,559.5	9.9	7.4	143.50	-146.6	-204.1	355.1	340.1	15.03	23.620		
2,700.0	2,650.6	2,681.7	2,656.0	10.4	7.8	142.60	-159.6	-218.2	372.0	356.1	15.87	23.444		
2,800.0	2,747.9	2,780.1	2,752.5	10.9	8.2	141.78	-172.5	-232.3	389.0	372.3	16.70	23.286		
2,900.0	2,845.3	2,878.5	2,849.0	11.4	8.6	141.03	-185.5	-246.4	406.0	388.5	17.54	23.142		
3,000.0	2,942.6	2,976.9	2,945.5	11.9	9.0	140.34	-198.4	-260.5	423.1	404.8	18.39	23.012		
3,100.0	3,040.0	3,075.3	3,042.1	12.4	9.5	139.71	-211.4	-274.6	440.3	421.1	19.23	22.894		
3,200.0	3,137.3	3,173.7	3,138.6	12.8	9.9	139.12	-224.4	-288.7	457.5	437.4	20.08	22.786		
3,300.0	3,234.7	3,272.1	3,235.1	13.3	10.3	138.57	-237.3	-302.8	474.8	453.8	20.93	22.687		
3,400.0	3,332.0	3,370.5	3,331.6	13.8	10.7	138.06	-250.3	-316.9	492.1	470.3	21.78	22.596		
3,500.0	3,429.3	3,468.9	3,428.2	14.3	11.2	137.59	-263.2	-331.0	509.4	486.8	22.63	22.512		
3,600.0	3,526.7	3,567.3	3,524.7	14.8	11.6	137.15	-276.2	-345.1	526.7	503.3	23.48	22.435		
3,700.0	3,624.0	3,665.7	3,621.2	15.3	12.0	136.73	-289.1	-359.1	544.1	519.8	24.33	22.363		
3,800.0	3,721.4	3,764.1	3,717.7	15.8	12.4	136.35	-302.1	-373.2	561.5	536.4	25.18	22.297		
3,900.0	3,818.7	3,862.5	3,814.3	16.3	12.9	135.98	-315.0	-387.3	579.0	552.9	26.04	22.236		
4,000.0	3,916.0	3,960.9	3,910.8	16.8	13.3	135.64	-328.0	-401.4	596.4	569.5	26.89	22.178		
4,100.0	4,013.4	4,059.3	4,007.3	17.3	13.7	135.31	-340.9	-415.5	613.9	586.2	27.75	22.125		
4,200.0	4,110.7	4,157.7	4,103.8	17.8	14.1	135.01	-353.9	-429.6	631.4	602.8	28.60	22.075		
4,300.0	4,208.1	4,256.1	4,200.3	18.3	14.6	134.72	-366.9	-443.7	648.9	619.5	29.46	22.028		
4,400.0	4,305.4	4,354.5	4,296.9	18.8	15.0	134.44	-379.8	-457.8	666.4	636.1	30.32	21.984		
4,500.0	4,402.8	4,452.9	4,393.4	19.3	15.4	134.18	-392.8	-471.9	684.0	652.8	31.17	21.943		
4,600.0	4,500.1	4,551.3	4,489.9	19.7	15.9	133.93	-405.7	-486.0	701.5	669.5	32.03	21.904		
4,700.0	4,597.4	4,649.8	4,586.4	20.2	16.3	133.70	-418.7	-500.1	719.1	686.2	32.89	21.867		
4,800.0	4,694.8	4,748.2	4,683.0	20.7	16.7	133.48	-431.6	-514.2	736.7	702.9	33.74	21.832		
4,900.0	4,792.1	4,846.6	4,779.5	21.2	17.2	133.26	-444.6	-528.3	754.3	719.7	34.60	21.799		
5,000.0	4,889.5	4,945.0	4,876.0	21.7	17.6	133.06	-457.5	-542.3	771.9	736.4	35.46	21.768		
5,100.0	4,986.8	5,043.4	4,972.5	22.2	18.0	132.86	-470.5	-556.4	789.5	753.2	36.32	21.739		
5,158.7	5,044.0	5,101.1	5,029.2	22.5	18.3	132.75	-478.1	-564.7	799.8	763.0	36.82	21.722		
5,200.0	5,084.2	5,142.5	5,069.8	22.7	18.4	132.77	-483.5	-570.5	806.9	769.7	37.15	21.721		
5,300.0	5,182.2	5,244.2	5,170.0	23.0	18.8	132.84	-495.0	-583.1	822.1	784.3	37.79	21.753		
5,400.0	5,280.9	5,346.3	5,271.3	23.3	19.0	132.94	-504.1	-593.0	834.6	796.3	38.32	21.779		
5,500.0	5,380.1	5,448.9	5,373.3	23.5	19.2	133.07	-510.9	-600.4	844.5	805.7	38.77	21.781		
5,600.0	5,479.6	5,551.7	5,475.9	23.7	19.4	133.23	-515.1	-605.0	851.5	812.4	39.13	21.761		
5,700.0	5,579.4	5,654.6	5,578.8	23.8	19.6	133.42	-516.9	-606.9	855.9	816.5	39.41	21.716		
5,800.0	5,679.4	5,755.2	5,679.4	24.0	19.7	133.56	-516.9	-607.0	857.6	817.9	39.63	21.640		
5,820.6	5,700.0	5,775.8	5,700.0	24.0	19.7	-48.07	-516.9	-607.0	857.6	818.0	39.67	21.617		
5,900.0	5,779.4	5,855.2	5,779.4	24.1	19.8	-48.07	-516.9	-607.0	857.6	817.8	39.87	21.512		
6,000.0	5,879.4	5,955.2	5,879.4	24.1	19.9	-48.07	-516.9	-607.0	857.6	817.5	40.10	21.388		
6,100.0	5,979.4	6,055.2	5,979.4	24.2	20.1	-48.07	-516.9	-607.0	857.6	817.3	40.33	21.264		
6,200.0	6,079.4	6,155.2	6,079.4	24.3	20.2	-48.07	-516.9	-607.0	857.6	817.1	40.57	21.139		
6,300.0	6,179.4	6,255.2	6,179.4	24.4	20.3	-48.07	-516.9	-607.0	857.6	816.8	40.81	21.014		
6,400.0	6,279.4	6,355.2	6,279.4	24.5	20.4	-48.07	-516.9	-607.0	857.6	816.6	41.06	20.888		
6,500.0	6,379.4	6,455.2	6,379.4	24.6	20.6	-48.07	-516.9	-607.0	857.6	816.3	41.31	20.763		
6,600.0	6,479.4	6,555.2	6,479.4	24.7	20.7	-48.07	-516.9	-607.0	857.6	816.1	41.56	20.637		
6,700.0	6,579.4	6,655.2	6,579.4	24.8	20.8	-48.07	-516.9	-607.0	857.6	815.8	41.81	20.511		
6,800.0	6,679.4	6,755.2	6,679.4	24.9	21.0	-48.07	-516.9	-607.0	857.6	815.6	42.07	20.385		

CC - Min centre to center distance or convergent point, SF - min separation factor, ES - min ellipse separation

<b>Company:</b>	BAYSWATER EXPLORATION & PRODUCTION	<b>Local Co-ordinate Reference:</b>	Well Mojack 24-28
<b>Project:</b>	SEC.28-T7N-R64W	<b>TVD Reference:</b>	WELL @ 4908.0ft (Original Well Elev)
<b>Reference Site:</b>	Mojack 24-28 Pad Sec.28-T7N-R64W	<b>MD Reference:</b>	WELL @ 4908.0ft (Original Well Elev)
<b>Site Error:</b>	0.0ft	<b>North Reference:</b>	True
<b>Reference Well:</b>	Mojack 24-28	<b>Survey Calculation Method:</b>	Minimum Curvature
<b>Well Error:</b>	0.0ft	<b>Output errors are at</b>	2.00 sigma
<b>Reference Wellbore</b>	Wellbore #1	<b>Database:</b>	Landmark
<b>Reference Design:</b>	Plan #1 (3-27-12)	<b>Offset TVD Reference:</b>	Offset Datum

<b>Offset Design</b> Mojack 24-28 Pad Sec.28-T7N-R64W - Mojack 7-28 - Wellbore #1 - Plan #1 (3-28-12)												<b>Offset Site Error:</b>	0.0 ft
Survey Program: 0-MWD												<b>Offset Well Error:</b>	0.0 ft
Reference	Offset	Semi Major Axis		Distance									
Measured Depth (ft)	Vertical Depth (ft)	Measured Depth (ft)	Vertical Depth (ft)	Reference (ft)	Offset (ft)	Highside Toolface (°)	Offset Wellbore Centre +N/-S (ft)	Offset Wellbore Centre +E/-W (ft)	Between Centres (ft)	Between Ellipses (ft)	Minimum Separation (ft)	Separation Factor	Warning
6,900.0	6,779.4	6,855.2	6,779.4	25.0	21.1	-48.07	-516.9	-607.0	857.6	815.3	42.33	20.259	
7,000.0	6,879.4	6,955.2	6,879.4	25.1	21.2	-48.07	-516.9	-607.0	857.6	815.0	42.60	20.133	
7,100.0	6,979.4	7,055.2	6,979.4	25.2	21.4	-48.07	-516.9	-607.0	857.6	814.8	42.87	20.007	
7,200.0	7,079.4	7,155.2	7,079.4	25.4	21.5	-48.07	-516.9	-607.0	857.6	814.5	43.14	19.882	
7,300.0	7,179.4	7,255.2	7,179.4	25.5	21.7	-48.07	-516.9	-607.0	857.6	814.2	43.41	19.757	
7,400.0	7,279.4	7,355.2	7,279.4	25.6	21.8	-48.07	-516.9	-607.0	857.6	813.9	43.69	19.631	
7,470.6	7,350.0	7,425.8	7,350.0	25.7	21.9	-48.07	-516.9	-607.0	857.6	813.7	43.88	19.543	

<b>Company:</b>	BAYSWATER EXPLORATION & PRODUCTION	<b>Local Co-ordinate Reference:</b>	Well Mojack 24-28
<b>Project:</b>	SEC.28-T7N-R64W	<b>TVD Reference:</b>	WELL @ 4908.0ft (Original Well Elev)
<b>Reference Site:</b>	Mojack 24-28 Pad Sec.28-T7N-R64W	<b>MD Reference:</b>	WELL @ 4908.0ft (Original Well Elev)
<b>Site Error:</b>	0.0ft	<b>North Reference:</b>	True
<b>Reference Well:</b>	Mojack 24-28	<b>Survey Calculation Method:</b>	Minimum Curvature
<b>Well Error:</b>	0.0ft	<b>Output errors are at</b>	2.00 sigma
<b>Reference Wellbore</b>	Wellbore #1	<b>Database:</b>	Landmark
<b>Reference Design:</b>	Plan #1 (3-27-12)	<b>Offset TVD Reference:</b>	Offset Datum

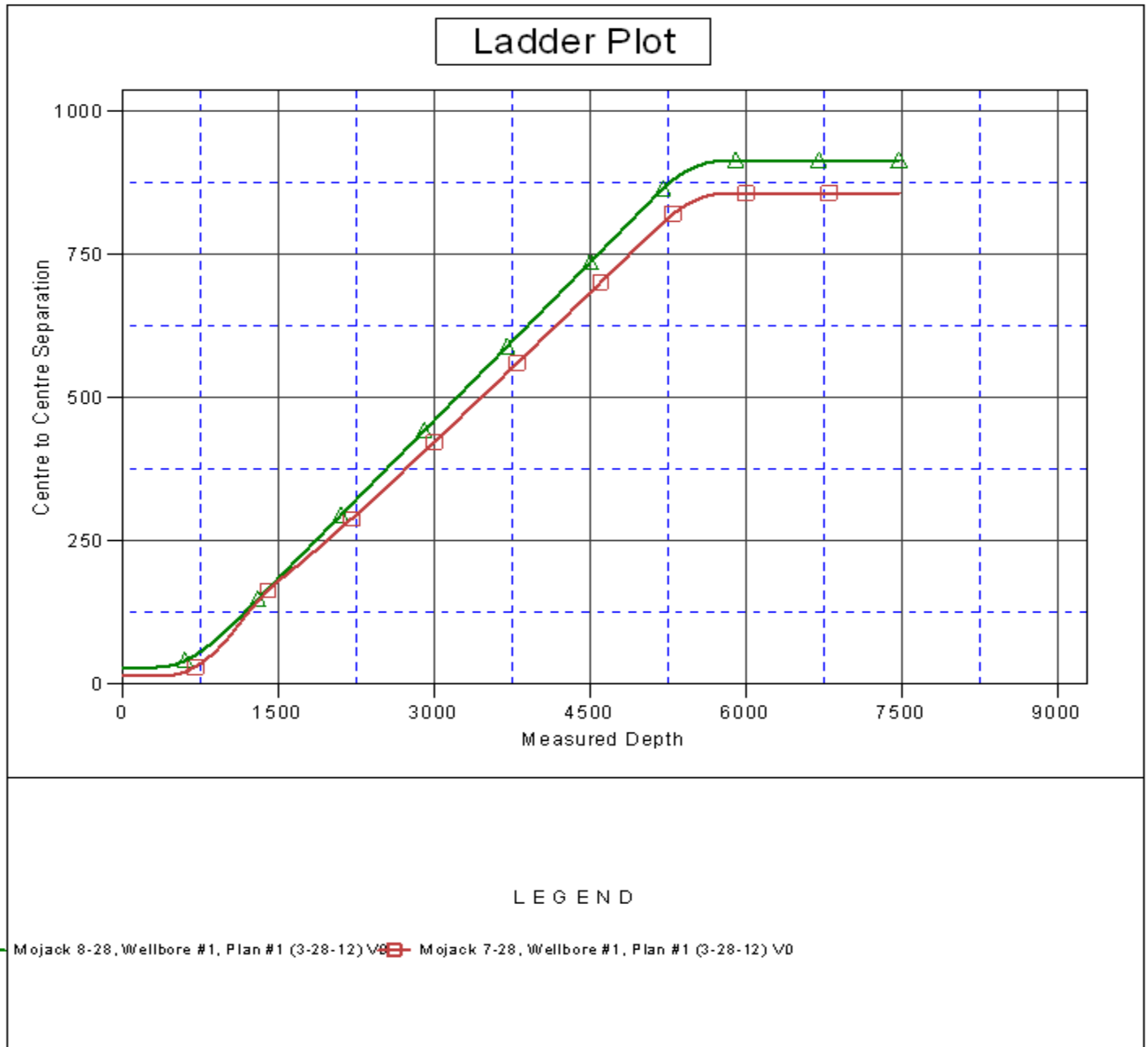
Offset Design Mojack 24-28 Pad Sec.28-T7N-R64W - Mojack 8-28 - Wellbore #1 - Plan #1 (3-28-12)													Offset Site Error:	0.0 ft
Survey Program: 0-MWD													Offset Well Error:	0.0 ft
Measured Depth (ft)	Vertical Depth (ft)	Measured Depth (ft)	Vertical Depth (ft)	Reference	Offset	Semi Major Axis	Highside Toolface (°)	Offset Wellbore Centre +N/-S (ft)	+E/-W (ft)	Between Centres (ft)	Between Ellipses (ft)	Minimum Separation (ft)	Separation Factor	Warning
0.0	0.0	0.0	0.0	0.0	0.0	2.13	2.13	29.9	1.1	29.9				
100.0	100.0	100.0	100.0	0.1	0.1	2.13	2.13	29.9	1.1	29.9	29.7	0.22	132.987	
200.0	200.0	200.0	200.0	0.3	0.3	2.13	2.13	29.9	1.1	29.9	29.2	0.67	44.329	
292.6	292.6	292.6	292.6	0.5	0.5	5.00	5.00	29.7	2.6	29.9	28.8	1.08	27.637 CC	
300.0	300.0	300.0	300.0	0.6	0.6	5.48	5.48	29.7	2.9	29.9	28.7	1.11	26.829 ES	
400.0	400.0	399.8	399.6	0.8	0.8	15.38	15.38	29.3	8.0	30.4	28.8	1.56	19.468	
500.0	500.0	499.6	499.1	1.0	1.0	-149.52	-149.52	28.2	16.5	34.2	32.1	2.01	17.015	
600.0	599.8	599.6	598.4	1.2	1.3	-137.78	-137.78	24.4	27.0	41.3	38.8	2.45	16.833 SF	
700.0	699.5	699.2	697.1	1.4	1.6	-128.83	-128.83	17.7	39.1	51.2	48.2	2.95	17.366	
800.0	798.7	798.5	794.9	1.7	1.9	-122.31	-122.31	8.1	53.0	63.5	60.0	3.51	18.112	
900.0	897.5	897.3	892.1	2.0	2.3	-119.10	-119.10	-2.6	67.5	78.0	73.9	4.14	18.859	
1,000.0	995.6	996.0	989.1	2.3	2.7	-118.69	-118.69	-13.3	81.9	94.3	89.5	4.83	19.533	
1,061.9	1,056.0	1,056.9	1,049.0	2.6	2.9	-119.28	-119.28	-19.9	90.9	105.2	100.0	5.29	19.912	
1,100.0	1,093.1	1,094.4	1,085.8	2.7	3.1	-119.88	-119.88	-24.0	96.4	112.2	106.6	5.58	20.118	
1,200.0	1,190.5	1,192.7	1,182.5	3.2	3.5	-121.14	-121.14	-34.6	110.8	130.4	124.0	6.35	20.535	
1,300.0	1,287.8	1,290.9	1,279.1	3.6	3.9	-122.09	-122.09	-45.3	125.2	148.7	141.5	7.14	20.828	
1,400.0	1,385.1	1,389.2	1,375.8	4.1	4.3	-122.84	-122.84	-55.9	139.6	167.0	159.0	7.93	21.047	
1,500.0	1,482.5	1,487.5	1,472.4	4.6	4.7	-123.43	-123.43	-66.6	154.0	185.3	176.6	8.74	21.213	
1,600.0	1,579.8	1,585.8	1,569.0	5.0	5.1	-123.92	-123.92	-77.3	168.4	203.6	194.1	9.54	21.343	
1,700.0	1,677.2	1,684.1	1,665.7	5.5	5.5	-124.33	-124.33	-87.9	182.8	222.0	211.7	10.35	21.448	
1,800.0	1,774.5	1,782.4	1,762.3	6.0	5.9	-124.68	-124.68	-98.6	197.2	240.4	229.2	11.16	21.533	
1,900.0	1,871.9	1,880.7	1,859.0	6.5	6.4	-124.97	-124.97	-109.3	211.6	258.7	246.8	11.98	21.603	
2,000.0	1,969.2	1,979.0	1,955.6	7.0	6.8	-125.23	-125.23	-119.9	226.0	277.1	264.3	12.79	21.663	
2,100.0	2,066.5	2,077.3	2,052.2	7.5	7.2	-125.46	-125.46	-130.6	240.4	295.5	281.9	13.61	21.713	
2,200.0	2,163.9	2,175.6	2,148.9	7.9	7.6	-125.66	-125.66	-141.3	254.8	313.9	299.5	14.43	21.757	
2,300.0	2,261.2	2,273.8	2,245.5	8.4	8.0	-125.83	-125.83	-151.9	269.2	332.3	317.0	15.25	21.795	
2,400.0	2,358.6	2,372.1	2,342.2	8.9	8.4	-125.99	-125.99	-162.6	283.6	350.7	334.6	16.07	21.828	
2,500.0	2,455.9	2,470.4	2,438.8	9.4	8.8	-126.13	-126.13	-173.2	298.0	369.1	352.2	16.89	21.857	
2,600.0	2,553.3	2,568.7	2,535.5	9.9	9.2	-126.26	-126.26	-183.9	312.4	387.5	369.7	17.71	21.883	
2,700.0	2,650.6	2,667.0	2,632.1	10.4	9.7	-126.38	-126.38	-194.6	326.9	405.9	387.3	18.53	21.906	
2,800.0	2,747.9	2,765.3	2,728.7	10.9	10.1	-126.49	-126.49	-205.2	341.3	424.3	404.9	19.35	21.927	
2,900.0	2,845.3	2,863.6	2,825.4	11.4	10.5	-126.59	-126.59	-215.9	355.7	442.7	422.5	20.17	21.946	
3,000.0	2,942.6	2,961.9	2,922.0	11.9	10.9	-126.68	-126.68	-226.6	370.1	461.1	440.1	20.99	21.963	
3,100.0	3,040.0	3,060.2	3,018.7	12.4	11.3	-126.76	-126.76	-237.2	384.5	479.5	457.6	21.81	21.979	
3,200.0	3,137.3	3,158.5	3,115.3	12.8	11.7	-126.84	-126.84	-247.9	398.9	497.9	475.2	22.64	21.993	
3,300.0	3,234.7	3,256.7	3,211.9	13.3	12.1	-126.91	-126.91	-258.6	413.3	516.3	492.8	23.46	22.006	
3,400.0	3,332.0	3,355.0	3,308.6	13.8	12.5	-126.98	-126.98	-269.2	427.7	534.7	510.4	24.28	22.018	
3,500.0	3,429.3	3,453.3	3,405.2	14.3	13.0	-127.04	-127.04	-279.9	442.1	553.1	528.0	25.11	22.029	
3,600.0	3,526.7	3,551.6	3,501.9	14.8	13.4	-127.10	-127.10	-290.5	456.5	571.5	545.6	25.93	22.039	
3,700.0	3,624.0	3,649.9	3,598.5	15.3	13.8	-127.15	-127.15	-301.2	470.9	589.9	563.1	26.75	22.049	
3,800.0	3,721.4	3,748.2	3,695.2	15.8	14.2	-127.20	-127.20	-311.9	485.3	608.3	580.7	27.58	22.057	
3,900.0	3,818.7	3,846.5	3,791.8	16.3	14.6	-127.25	-127.25	-322.5	499.7	626.7	598.3	28.40	22.066	
4,000.0	3,916.0	3,944.8	3,888.4	16.8	15.0	-127.30	-127.30	-333.2	514.1	645.1	615.9	29.23	22.073	
4,100.0	4,013.4	4,043.1	3,985.1	17.3	15.4	-127.34	-127.34	-343.9	528.5	663.5	633.5	30.05	22.081	
4,200.0	4,110.7	4,141.3	4,081.7	17.8	15.9	-127.38	-127.38	-354.5	542.9	681.9	651.1	30.87	22.087	
4,300.0	4,208.1	4,239.6	4,178.4	18.3	16.3	-127.42	-127.42	-365.2	557.3	700.3	668.6	31.70	22.094	
4,400.0	4,305.4	4,337.9	4,275.0	18.8	16.7	-127.46	-127.46	-375.9	571.7	718.8	686.2	32.52	22.100	
4,500.0	4,402.8	4,436.2	4,371.6	19.3	17.1	-127.49	-127.49	-386.5	586.2	737.2	703.8	33.35	22.105	
4,600.0	4,500.1	4,534.5	4,468.3	19.7	17.5	-127.53	-127.53	-397.2	600.6	755.6	721.4	34.17	22.111	
4,700.0	4,597.4	4,632.8	4,564.9	20.2	17.9	-127.56	-127.56	-407.9	615.0	774.0	739.0	35.00	22.116	
4,800.0	4,694.8	4,731.1	4,661.6	20.7	18.3	-127.59	-127.59	-418.5	629.4	792.4	756.6	35.82	22.120	

CC - Min centre to center distance or convergent point, SF - min separation factor, ES - min ellipse separation

Mojack 24-28 Pad Sec.28-T7N-R64W - Mojack 8-28 - Wellbore #1 - Plan #1 (3-28-12)													Offset Site Error: 0.0 ft	
Survey Program: 0-MWD													Offset Well Error: 0.0 ft	
Reference		Offset		Semi Major Axis			Distance							Warning
Measured Depth	Vertical Depth	Measured Depth	Vertical Depth	Reference	Offset	Highside Toolface	Offset Wellbore Centre		Between Centres	Between Ellipses	Minimum Separation	Separation Factor		
(ft)	(ft)	(ft)	(ft)	(ft)	(ft)	(°)	+N/-S (ft)	+E/-W (ft)	(ft)	(ft)	(ft)			
4,900.0	4,792.1	4,829.4	4,758.2	21.2	18.8	-127.62	-429.2	643.8	810.8	774.2	36.65	22.125		
5,000.0	4,889.5	4,927.7	4,854.9	21.7	19.2	-127.64	-439.8	658.2	829.2	791.8	37.47	22.129		
5,100.0	4,986.8	5,026.0	4,951.5	22.2	19.6	-127.67	-450.5	672.6	847.6	809.3	38.30	22.133		
5,158.7	5,044.0	5,085.9	5,010.5	22.5	19.8	-127.70	-456.9	681.2	858.4	819.6	38.77	22.143		
5,200.0	5,084.2	5,129.6	5,053.6	22.7	19.9	-127.86	-461.1	687.0	865.6	826.6	39.05	22.166		
5,300.0	5,182.2	5,235.7	5,158.6	23.0	20.2	-128.27	-469.8	698.7	881.1	841.5	39.62	22.242		
5,400.0	5,280.9	5,342.2	5,264.6	23.3	20.4	-128.67	-476.2	707.3	893.6	853.5	40.10	22.288		
5,500.0	5,380.1	5,449.0	5,371.2	23.5	20.6	-129.08	-480.2	712.8	903.2	862.7	40.49	22.307		
5,600.0	5,479.6	5,556.0	5,478.1	23.7	20.8	-129.51	-481.9	715.0	909.7	868.9	40.80	22.298		
5,700.0	5,579.4	5,657.3	5,579.4	23.8	20.9	-129.85	-482.0	715.1	913.5	872.5	41.04	22.258		
5,800.0	5,679.4	5,757.2	5,679.4	24.0	21.0	-130.00	-482.0	715.1	915.1	873.9	41.26	22.180		
5,820.6	5,700.0	5,777.8	5,700.0	24.0	21.0	48.36	-482.0	715.1	915.2	873.9	41.30	22.157		
5,900.0	5,779.4	5,857.2	5,779.4	24.1	21.1	48.36	-482.0	715.1	915.2	873.7	41.49	22.058		
6,000.0	5,879.4	5,957.2	5,879.4	24.1	21.2	48.36	-482.0	715.1	915.2	873.5	41.71	21.940		
6,100.0	5,979.4	6,057.2	5,979.4	24.2	21.3	48.36	-482.0	715.1	915.2	873.2	41.94	21.821		
6,200.0	6,079.4	6,157.2	6,079.4	24.3	21.5	48.36	-482.0	715.1	915.2	873.0	42.17	21.703		
6,300.0	6,179.4	6,257.2	6,179.4	24.4	21.6	48.36	-482.0	715.1	915.2	872.8	42.40	21.583		
6,400.0	6,279.4	6,357.2	6,279.4	24.5	21.7	48.36	-482.0	715.1	915.2	872.5	42.64	21.463		
6,500.0	6,379.4	6,457.2	6,379.4	24.6	21.8	48.36	-482.0	715.1	915.2	872.3	42.88	21.343		
6,600.0	6,479.4	6,557.2	6,479.4	24.7	22.0	48.36	-482.0	715.1	915.2	872.0	43.12	21.222		
6,700.0	6,579.4	6,657.2	6,579.4	24.8	22.1	48.36	-482.0	715.1	915.2	871.8	43.37	21.102		
6,800.0	6,679.4	6,757.2	6,679.4	24.9	22.2	48.36	-482.0	715.1	915.2	871.5	43.62	20.981		
6,900.0	6,779.4	6,857.2	6,779.4	25.0	22.3	48.36	-482.0	715.1	915.2	871.3	43.87	20.860		
7,000.0	6,879.4	6,957.2	6,879.4	25.1	22.5	48.36	-482.0	715.1	915.2	871.0	44.13	20.738		
7,100.0	6,979.4	7,057.2	6,979.4	25.2	22.6	48.36	-482.0	715.1	915.2	870.8	44.39	20.617		
7,200.0	7,079.4	7,157.2	7,079.4	25.4	22.7	48.36	-482.0	715.1	915.2	870.5	44.65	20.496		
7,300.0	7,179.4	7,257.2	7,179.4	25.5	22.9	48.36	-482.0	715.1	915.2	870.3	44.92	20.375		
7,400.0	7,279.4	7,357.2	7,279.4	25.6	23.0	48.36	-482.0	715.1	915.2	870.0	45.19	20.254		
7,470.6	7,350.0	7,427.8	7,350.0	25.7	23.1	48.36	-482.0	715.1	915.2	869.8	45.38	20.168		

<b>Company:</b>	BAYSWATER EXPLORATION & PRODUCTION	<b>Local Co-ordinate Reference:</b>	Well Mojack 24-28
<b>Project:</b>	SEC.28-T7N-R64W	<b>TVD Reference:</b>	WELL @ 4908.0ft (Original Well Elev)
<b>Reference Site:</b>	Mojack 24-28 Pad Sec.28-T7N-R64W	<b>MD Reference:</b>	WELL @ 4908.0ft (Original Well Elev)
<b>Site Error:</b>	0.0ft	<b>North Reference:</b>	True
<b>Reference Well:</b>	Mojack 24-28	<b>Survey Calculation Method:</b>	Minimum Curvature
<b>Well Error:</b>	0.0ft	<b>Output errors are at</b>	2.00 sigma
<b>Reference Wellbore</b>	Wellbore #1	<b>Database:</b>	Landmark
<b>Reference Design:</b>	Plan #1 (3-27-12)	<b>Offset TVD Reference:</b>	Offset Datum

Reference Depths are relative to WELL @ 4908.0ft (Original Well Elev) Coordinates are relative to: Mojack 24-28  
Offset Depths are relative to Offset Datum  
Central Meridian is -105.500000 °  
Coordinate System is US State Plane 1983, Colorado Northern Zone  
Grid Convergence at Surface is: 0.61°



<b>Company:</b>	BAYSWATER EXPLORATION & PRODUCTION	<b>Local Co-ordinate Reference:</b>	Well Mojack 24-28
<b>Project:</b>	SEC.28-T7N-R64W	<b>TVD Reference:</b>	WELL @ 4908.0ft (Original Well Elev)
<b>Reference Site:</b>	Mojack 24-28 Pad Sec.28-T7N-R64W	<b>MD Reference:</b>	WELL @ 4908.0ft (Original Well Elev)
<b>Site Error:</b>	0.0ft	<b>North Reference:</b>	True
<b>Reference Well:</b>	Mojack 24-28	<b>Survey Calculation Method:</b>	Minimum Curvature
<b>Well Error:</b>	0.0ft	<b>Output errors are at</b>	2.00 sigma
<b>Reference Wellbore</b>	Wellbore #1	<b>Database:</b>	Landmark
<b>Reference Design:</b>	Plan #1 (3-27-12)	<b>Offset TVD Reference:</b>	Offset Datum

Reference Depths are relative to WELL @ 4908.0ft (Original Well Elev) Coordinates are relative to: Mojack 24-28  
Offset Depths are relative to Offset Datum Coordinate System is US State Plane 1983, Colorado Northern Zone  
Central Meridian is -105.500000 ° Grid Convergence at Surface is: 0.61°

