

# HALLIBURTON

## Cementing Job Summary

*The Road to Excellence Starts with Safety*

Sold To #: 300721	Ship To #: 2850154	Quote #:	Sales Order #: 8123306
Customer: WILLIAMS PRODUCTION RMT INC - EBUS	Customer Rep: DUNIHOO, AL		
Well Name: RWF	Well #: 323-14	API/UWI #: 05-045-20148	
Field: RULISON	City (SAP): RIFLE	County/Parish: Garfield	State: Colorado
Lat: N 39.527 deg. OR N 39 deg. 31 min. 38.762 secs.	Long: W 107.857 deg. OR W -108 deg. 8 min. 35.83 secs.		
Contractor: CYCLONE 30	Rig/Platform Name/Num: CYCLONE 30		
Job Purpose: Cement Surface Casing			
Well Type: Development Well	Job Type: Cement Surface Casing		
Sales Person: KOHL, KYLE	Srv Supervisor: SMITH, DUSTIN	MBU ID Emp #: 418015	

### Job Personnel

HES Emp Name	Exp Hrs	Emp #	HES Emp Name	Exp Hrs	Emp #	HES Emp Name	Exp Hrs	Emp #
DOUT, JACOB J	12.5	430298	SMITH, DUSTIN Michael	12.5	418015	YOUNG, JEREMY R	12.5	418013

### Equipment

HES Unit #	Distance-1 way	HES Unit #	Distance-1 way	HES Unit #	Distance-1 way	HES Unit #	Distance-1 way
10867425	60 mile	10897891	60 mile	10951248	60 mile	11560046	60 mile
11562538	60 mile						

### Job Hours

Date	On Location Hours	Operating Hours	Date	On Location Hours	Operating Hours	Date	On Location Hours	Operating Hours
05/16/11	1.5	0	05/17/11	11	3			

**TOTAL** Total is the sum of each column separately

### Job

### Job Times

Formation Name	Formation Depth (MD)	Top	Bottom	Called Out	Date	Time	Time Zone
Form Type	1155. ft	BHST	1155. ft	On Location	16 - May - 2011	19:00	MST
Job depth MD	1155. ft	Job Depth TVD	1155. ft	Job Started	16 - May - 2011	22:30	MST
Water Depth	5. ft	Wk Ht Above Floor	5. ft	Job Completed	17 - May - 2011	08:41	MST
Perforation Depth (MD)	From	To	Departed Loc	17 - May - 2011	09:37	11:00	MST

### Well Data

Description	New / Used	Max pressure psig	Size in	ID in	Weight lbm/ft	Thread	Grade	Top MD ft	Bottom MD ft	Top TVD ft	Bottom TVD ft
OPEN HOLE				13.5				.	1155.		
SURFACE CASING	Unknown		9.625	9.001	32.3			.	1139.6		

### Sales/Rental/3<sup>rd</sup> Party (HES)

Description	Qty	Qty uom	Depth	Supplier
PLUG,CMTG,TOP,9 5/8,HWE,8.16 MIN/9.06 MA	1	EA		

### Tools and Accessories

Type	Size	Qty	Make	Depth	Type	Size	Qty	Make	Depth	Type	Size	Qty	Make
Guide Shoe					Packer					Top Plug	9 5/8	1	
Float Shoe					Bridge Plug					Bottom Plug			
Float Collar					Retainer					SSR plug set			
Insert Float										Plug Container	9 5/8	1	
Stage Tool										Centralizers			

### Miscellaneous Materials

Gelling Agt	Conc	Surfactant	Conc	Acid Type	Qty	Conc	%
Treatment Fld	Conc	Inhibitor	Conc	Sand Type	Size	Qty	

### Fluid Data

Stage/Plug #: 1	Fluid #	Stage Type	Fluid Name	Qty	Qty uom	Mixing Density lbm/gal	Yield ft <sup>3</sup> /sk	Mix Fluid Gal/sk	Rate bbl/min	Total Mix Fluid Gal/sk
-----------------	---------	------------	------------	-----	---------	------------------------	---------------------------	------------------	--------------	------------------------

# HALLIBURTON

## Cementing Job Summary

1	Water Spacer		20.00	bbl	.	.0	.0	6.0	
2	Lead Cement	VERSACEM (TM) SYSTEM (452010)	160.0	sacks	12.3	2.37	13.75	8.0	13.75
	13.75 Gal	FRESH WATER							
3	Tail Cement	VERSACEM (TM) SYSTEM (452010)	160.0	sacks	12.8	2.11	11.75	8.0	11.75
	11.75 Gal	FRESH WATER							
4	Displacement Fluid		86.00	bbl	8.34	.0	.0	10.0	
Calculated Values		Pressures		Volumes					
Displacement	86.1	Shut In: Instant		Lost Returns	0	Cement Slurry	127.9	Pad	
Top Of Cement	SURFACE	5 Min		Cement Returns	26	Actual Displacement	86.1	Treatment	
Frac Gradient		15 Min		Spacers	20	Load and Breakdown		Total Job	234
Rates									
Circulating		Mixing	8	DISPLACEMENT	10	Avg. Job			9
Cement Left In Pipe	Amount	45.07 ft	Reason	Shoe Joint					
Frac Ring # 1 @	ID	Frac ring # 2 @	ID	Frac Ring # 3 @	ID	Frac Ring # 4 @	ID		
The Information Stated Herein Is Correct				Customer Representative Signature					

EVENT #	EVENT	VOLUME	SACKS	WEIGHT	YIELD	GAL/ SK
1	Start Job		0 <u>Max Psi</u>			
6	Test Lines	3000.0				
9	H2O Spacer	20.0				
	Lead Cement	67.8	160	12.3	2.38	13.75
15	Tail Cement	60.1	160	12.8	2.11	11.75
	Drop Plug					
22	Displace with H2O	86.1				
23	Slow rate	76.1				
26	Land Plug	242.0				
2	500 over	742.0				
	Release Psi / Job Over					
			Do Not Overdisplace			
DISPLACEMENT	TOTAL PIPE	SHOE JOINT LENGTH	FLOAT COLLAR	BBL/FT	H2O REQ.	
86.14	1139.64	45.07	1094.57	0.0787	210	
PSI to Lift Pipe	424	*****Use Mud Scales on Each Tier*****				
Total Displacement	86.14					
CALCULATED DIFFERENTIAL PSI		242	TOTAL FLUID PUMPED		234	
Collapse		Burst		SO#	8123306	

# HALLIBURTON

## Cementing Job Log

*The Road to Excellence Starts with Safety*

Sold To #: 300721	Ship To #: 2850154	Quote #:	Sales Order #: 8123306
Customer: WILLIAMS PRODUCTION RMT INC - EBUS	Customer Rep: DUNIHO, AL		
Well Name: RWF	Well #: 323-14	API/UWI #: 05-045-20148	
Field: RULISON	City (SAP): RIFLE	County/Parish: Garfield	State: Colorado
Legal Description:			
Lat: N 39.527 deg. OR N 39 deg. 31 min. 38.762 secs.		Long: W 107.857 deg. OR W -108 deg. 8 min. 35.83 secs.	
Contractor: CYCLONE 30	Rig/Platform Name/Num: CYCLONE 30		
Job Purpose: Cement Surface Casing	Ticket Amount:		
Well Type: Development Well	Job Type: Cement Surface Casing		
Sales Person: KOHL, KYLE	Srv Supervisor: SMITH, DUSTIN	MBU ID Emp #: 418015	

Activity Description	Date/Time	Cht #	Rate bbl/min	Volume bbl		Pressure psig		Comments
				Stage	Total	Tubing	Casing	
Call Out	05/16/2011 19:00							ELITE # 5
Depart Yard Safety Meeting	05/16/2011 21:00							ALL HES EMPLOYEES
Arrive At Loc	05/16/2011 22:30							ARRIVED ON LOCATION 2 1/2 HOURS EARLY DIDNT START CHARGING TIME UNTIL REQUESTED ON LOCATION TIME RIG STILL DRILLING
Assessment Of Location Safety Meeting	05/17/2011 05:30							ALL HES EMPLOYEES
Pre-Rig Up Safety Meeting	05/17/2011 05:45							ALL HES EMPLOYEES
Rig-Up Equipment	05/17/2011 06:00							1 F-450 PICKUP 1 HT-400 PUMP TRUCK 1 660 BULK TRUCK
Pre-Job Safety Meeting	05/17/2011 08:30							ALL HES EMPLOYEES AND RIG CREW
Rig-Up Completed	05/17/2011 08:40							RIG CIRCULATED FOR 1 HOUR PRIOR TO JOB
Start Job	05/17/2011 08:41							TD:1155 TP: 1139.64 SJ: 45.07 MUD WT: 10.5 PPG 9 5/8 32.3#/FT CSG 13 1/2 OH
Test Lines	05/17/2011 08:42					3780.0		1ST PRESSURE TEST FOUND LEAK ON IRON FIXED LEAK 2ND PRESSURE TEST OK
Pump Spacer	05/17/2011 08:48		6	20	20		132.0	FRESH WATER
Pump Lead Cement	05/17/2011 08:58		8	67.8	67.8		243.0	160 SKS 12.3 PPG 2.38 YIELD 13.75 GAL/SK

Sold To #: 300721

Ship To #: 2850154

Quote #:

Sales Order #: 8123306

SUMMIT Version: 7.20.130

Tuesday, May 17, 2011 10:07:00

# HALLIBURTON

## Cementing Job Log

Activity Description	Date/Time	Cht #	Rate bbl/ min	Volume bbl		Pressure psig		Comments
				Stage	Total	Tubing	Casing	
Pump Tail Cement	05/17/2011 09:07		8	60.1	60.1		224.0	160 SKS 12.8 2.11 YIELD 11.75 GAL/SK
Shutdown	05/17/2011 09:15							
Drop Plug	05/17/2011 09:15							PLUG AWAY NO PROBLEMS
Pump Displacement	05/17/2011 09:20		10	86.1	86.1		454.0	FRESH WATER WASHED UP ON TOP OF PLUG
Slow Rate	05/17/2011 09:31		2	76.1	76.1		279.0	
Bump Plug	05/17/2011 09:35		2	86.1	86.1		770.0	26 BBLS CEMENT TO SURFACE
Check Floats	05/17/2011 09:37							FLOATS HELD 1/2 BBL BACK INTO DISPLACEMENT TANK
End Job	05/17/2011 09:37							GOOD CIRCULATION THROUGHOUT JOB NO PIPE MOVEMENT DURING JOB
Pre-Rig Down Safety Meeting	05/17/2011 09:40							ALL HES EMPLOYEES
Rig-Down Equipment	05/17/2011 10:00							
Pre-Convoy Safety Meeting	05/17/2011 10:45							ALL HES EMPLOYEES
Crew Leave Location	05/17/2011 11:00							THANK YOU FOR USING HALLIBURTON CEMENT DUSTIN SMITH AND CREW

Sold To # : 300721

Ship To # :2850154

Quote # :

Sales Order # :

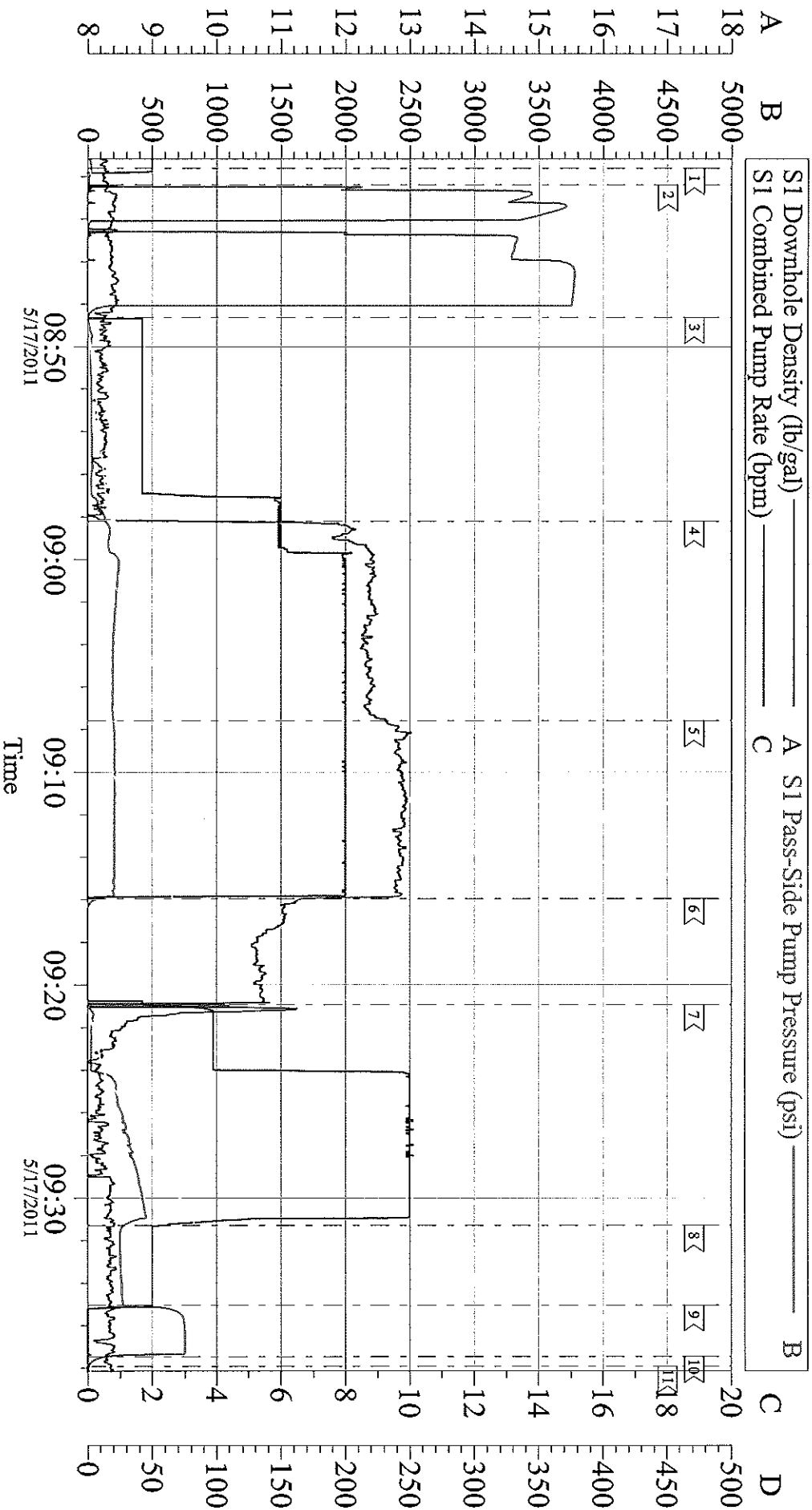
8123306

SUMMIT Version: 7.20.130

Tuesday, May 17, 2011 10:07:00

# WILLIAMS PRODUCTION

## RWF 323-14 9 5/8 SURFACE



Local Event Log			
1 START JOB	08:41:36	2 TEST LINES	08:42:23
4 PUMP LEAD CEMENT	08:58:12	5 PUMP TAIL CEMENT	09:07:36
7 PUMP DISPLACEMENT	09:20:56	8 SLOW RATE	09:31:18
10 CHECK FLOATS	09:37:28	11 END JOB	09:37:56
		3 PUMP SPACER	08:48:37
		6 SHUTDOWN/ DROP PLUG	09:15:56
		9 BUMP PLUG	09:35:02

Customer: WILLIAMS PRODUCTION	Job Date: 17-May-2011	Sales Order #: 8123306
Well Description: RWF 323-14	Job Type: 9 5/8 SURFACE	ADC Used: YES
Company Rep: AL DUNIHOO	Cement Supervisor: DUSTIN SMITH	Elite #: 5 JEREMY YOUNG

S1 Downhole Density (lb/gal) \_\_\_\_\_  
 S1 Pass-Side Pump Pressure (psi) \_\_\_\_\_  
 S1 Combined Pump Rate (bpm) \_\_\_\_\_  
 S1 Pump Stage Total (bbl) \_\_\_\_\_

A  
 B  
 C  
 D

