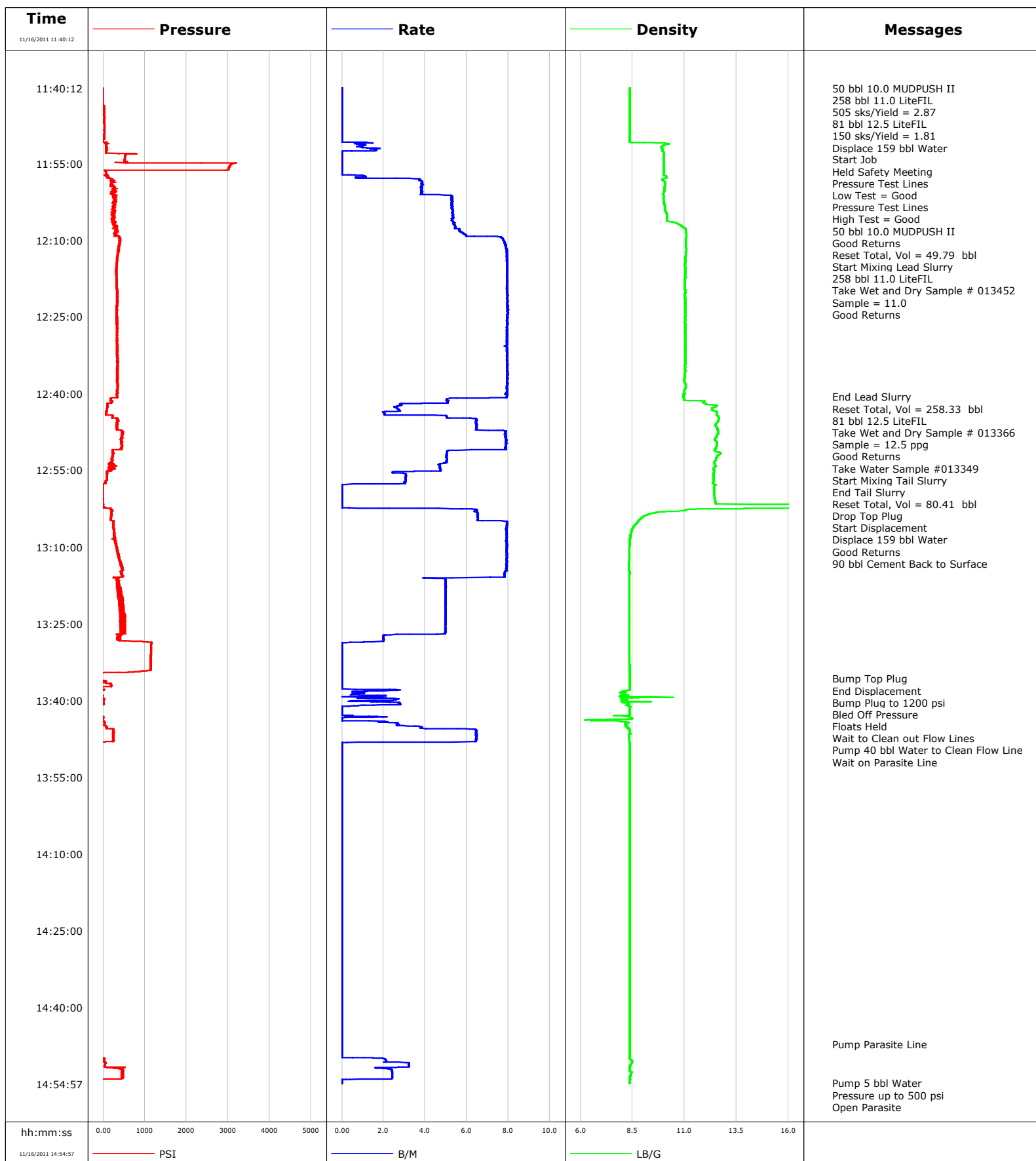


Well SGU 8506B
Field N Parachute
Engineer Tom Leduc
Country United States

Client Encana
SIR No.
Job Type 9 5/8 Surface
Job Date 11-16-2011





Cementing Service Report

				Customer Encana		Job Number BQMF-00342	
Well SGU 8506B 8506B			Location (legal) N Parachute		Schlumberger Location Grand Junction		Job Start Nov/16/2011
Field N Parachute		Formation Name/Type Shale		Deviation 0 deg	Bit Size 14.8 in	Well MD 2101.0 ft	Well TVD 2101.0 ft
County Garfield		State/Province Colorado		BHP	BHST 110 degF	BHCT 91 degF	Pore Press. Gradient
Well Master 0631277949		API/UWI					
Rig Name Patterson 306		Drilled For Gas	Service Via Land	Casing/Liner			
				Depth, ft	Size, in	Weight, lb/ft	Grade
Offshore Zone		Well Class New	Well Type Development	2101.0	9.630	36.0	K55
				0.0	0.000	0.0	
Drilling Fluid Type Bentonite		Max. Density 9.00 lb/gal	Plastic Viscosity 30.000 cP	Tubing/Drill Pipe			
				Depth,	Size,	Weight,	Grade
Service Line Cementing		Job Type 9 5/8 Surface					
Max. Allowed Tub. Press 3000 psi		Max. Allowed Ann. Press 500 psi	WH Connection Single Cement head	Perforations/Open Hole			
				Top,	Bottom,	No. of Shots	Total Interval
							Diameter
				Treat Down Casing	Displacement 158.0 bbl	Packer Type	Packer Depth
				Tubing Vol.	Casing Vol. 161.0 bbl	Annular Vol. 272.0 bbl	Openhole Vol. 451.0 bbl
Casing/Tubing Secured <input checked="" type="checkbox"/>		1 Hole Vol. Circulated prior to Cement <input checked="" type="checkbox"/>		Casing Tools		Squeeze Job	
Lift Pressure 1040 psi				Shoe Type Float		Squeeze Type	
Pipe Rotated <input type="checkbox"/>		Pipe Reciprocated <input type="checkbox"/>		Shoe Depth 2101.0 ft		Tool Type	
No. Centralizers		Top Plugs	Bottom Plugs	Stage Tool Type		Tool Depth	
Cement Head Type Single				Stage Tool Depth		Tail Pipe Size	
Job Scheduled For Nov/16/2011 07:00		Arrived on Location Nov/16/2011 07:00	Leave Location Nov/16/2011 15:00	Collar Type Float		Tail Pipe Depth	
				Collar Depth 2054.0 ft		Sqz. Total Vol.	
Date	Time 24-hr clock	Treating Pressure PSI	Flow Rate B/M	Density LB/G	Volume BBL	Message	
11/16/2011	09:51:05					Started Acquisition	
11/16/2011	11:40:11					Pump 9 5/8 Casing @ 2101'	
11/16/2011	11:40:12					50 bbl 10.0 MUDPUSH II	
11/16/2011	11:40:12					258 bbl 11.0 LiteFIL	
11/16/2011	11:40:12					505 sks/Yield = 2.87	
11/16/2011	11:40:12					81 bbl 12.5 LiteFIL	
11/16/2011	11:40:12					150 sks/Yield = 1.81	
11/16/2011	11:40:12	-15	0.0	8.37	0.0		
11/16/2011	11:40:13					Displace 159 bbl Water	
11/16/2011	11:40:13	-15	0.0	8.37	0.0		
11/16/2011	11:40:14					Start Job	
11/16/2011	11:40:14	-15	0.0	8.37	0.0		
11/16/2011	11:40:15					Held Safety Meeting	
11/16/2011	11:40:15	-15	0.0	8.37	0.0		
11/16/2011	11:40:16					Pressure Test Lines	
11/16/2011	11:40:16	-15	0.0	8.37	0.0		
11/16/2011	11:40:17					Low Test = Good	
11/16/2011	11:40:17	-15	0.0	8.37	0.0		
11/16/2011	11:40:19					Pressure Test Lines	
11/16/2011	11:40:19	-15	0.0	8.38	0.0		
11/16/2011	11:40:20					High Test = Good	

Well			Field		Job Start	Customer	Job Number
SGU 8506B 8506B			N Parachute		Nov/16/2011	Encana	BQMF-00342
Date	Time 24-hr clock	Treating Pressure PSI	Flow Rate B/M	Density LB/G	Volume BBL	Message	
11/16/2011	11:40:21					50 bbl 10.0 MUDPUSH II	
11/16/2011	11:40:21					Good Returns	
11/16/2011	11:40:21	-15	0.0	8.38	0.0		
11/16/2011	11:41:05	-15	0.0	8.38	0.0		
11/16/2011	11:42:45	-15	0.0	8.38	0.0		
11/16/2011	11:44:25	19	0.0	8.38	0.0		
11/16/2011	11:46:05	25	0.0	8.38	0.0		
11/16/2011	11:47:45	25	0.0	8.37	0.0		
11/16/2011	11:49:25	19	0.0	8.37	0.0		
11/16/2011	11:51:05	135	0.8	10.17	0.3		
11/16/2011	11:52:45	65	0.0	9.98	2.1		
11/16/2011	11:54:25	509	0.0	10.02	2.1		
11/16/2011	11:56:05	3011	0.0	10.02	2.1		
11/16/2011	11:57:45	135	0.8	10.13	2.6		
11/16/2011	11:59:25	220	3.9	10.06	8.4		
11/16/2011	12:01:05	222	3.8	9.97	14.8		
11/16/2011	12:02:45	279	5.3	10.02	23.5		
11/16/2011	12:04:25	279	5.3	10.10	32.4		
11/16/2011	12:06:05	223	5.3	10.15	41.2		
11/16/2011	12:07:40					Reset Total, Vol = 49.79 bbl	
11/16/2011	12:07:40	304	5.5	11.02	49.8		
11/16/2011	12:07:42					Start Mixing Lead Slurry	
11/16/2011	12:07:42					258 bbl 11.0 LiteFIL	
11/16/2011	12:07:42					Take Wet and Dry Sample # 013452	
11/16/2011	12:07:42	294	5.4	11.02	50.0		
11/16/2011	12:07:43					Sample = 11.0	
11/16/2011	12:07:43					Good Returns	
11/16/2011	12:07:43	294	5.5	11.03	50.1		
11/16/2011	12:07:45	308	5.5	11.04	50.2		
11/16/2011	12:09:25	385	7.7	11.08	60.2		
11/16/2011	12:11:05	378	7.9	11.07	73.2		
11/16/2011	12:12:45	355	7.9	11.07	86.3		
11/16/2011	12:14:25	326	7.9	11.03	99.6		
11/16/2011	12:16:05	307	7.9	11.05	112.8		
11/16/2011	12:17:45	313	7.9	11.01	126.1		
11/16/2011	12:19:25	332	7.9	11.02	139.3		
11/16/2011	12:21:05	333	8.0	11.02	152.6		
11/16/2011	12:22:45	342	8.0	11.03	165.8		
11/16/2011	12:24:25	326	8.0	11.03	179.1		
11/16/2011	12:26:05	334	8.0	11.02	192.4		
11/16/2011	12:27:45	338	7.9	11.03	205.6		
11/16/2011	12:29:25	330	7.9	11.03	218.8		
11/16/2011	12:31:05	331	8.0	11.05	232.1		
11/16/2011	12:32:45	331	8.0	11.04	245.3		
11/16/2011	12:34:25	345	8.0	11.03	258.6		
11/16/2011	12:36:05	341	8.0	11.01	271.8		
11/16/2011	12:37:45	332	8.0	11.00	285.1		
11/16/2011	12:39:25	330	7.9	10.99	298.3		
11/16/2011	12:40:38					End Lead Slurry	
11/16/2011	12:40:38	336	7.9	10.95	308.0		
11/16/2011	12:40:39					Reset Total, Vol = 258.33 bbl	
11/16/2011	12:40:39	336	7.9	10.95	308.1		
11/16/2011	12:40:40					81 bbl 12.5 LiteFIL	
11/16/2011	12:40:40					Take Wet and Dry Sample # 013366	

Well			Field		Job Start		Customer		Job Number	
SGU 8506B 8506B			N Parachute		Nov/16/2011		Encana		BQMF-00342	
Date	Time 24-hr clock	Treating Pressure PSI	Flow Rate B/M	Density LB/G	Volume BBL	Message				
11/16/2011	12:40:40	331	7.9	10.95	308.3					
11/16/2011	12:40:41					Good Returns				
11/16/2011	12:40:41					Take Water Sample #013349				
11/16/2011	12:40:41	343	7.9	10.95	308.4					
11/16/2011	12:41:05	186	5.0	10.96	310.9					
11/16/2011	12:42:45	99	2.6	12.41	317.4					
11/16/2011	12:43:09					Start Mixing Tail Slurry				
11/16/2011	12:43:09	93	2.7	12.31	318.5					
11/16/2011	12:44:25	223	5.0	12.62	322.0					
11/16/2011	12:46:05	320	6.5	12.49	332.2					
11/16/2011	12:47:45	470	7.9	12.61	343.8					
11/16/2011	12:49:25	423	7.9	12.55	356.9					
11/16/2011	12:51:05	227	5.2	12.43	369.9					
11/16/2011	12:52:45	221	5.0	12.51	378.3					
11/16/2011	12:54:25	202	4.7	12.44	386.4					
11/16/2011	12:54:50					End Tail Slurry				
11/16/2011	12:54:50	125	4.7	12.41	388.4					
11/16/2011	12:54:52					Reset Total, Vol = 80.41 bbl				
11/16/2011	12:54:52	209	4.7	12.41	388.5					
11/16/2011	12:54:53					Drop Top Plug				
11/16/2011	12:54:53					Start Displacement				
11/16/2011	12:54:53	209	4.7	12.41	388.6					
11/16/2011	12:54:54					Displace 159 bbl Water				
11/16/2011	12:54:54					Good Returns				
11/16/2011	12:54:54	126	4.7	12.41	388.7					
11/16/2011	12:56:05	92	3.1	12.39	392.6					
11/16/2011	12:57:45	-19	0.2	12.46	397.5					
11/16/2011	12:59:25	-22	0.0	12.42	397.5					
11/16/2011	13:01:05	-12	0.0	12.48	397.5					
11/16/2011	13:02:45	210	6.5	11.05	399.5					
11/16/2011	13:04:25	175	6.5	8.90	410.3					
11/16/2011	13:06:05	243	7.9	8.55	422.9					
11/16/2011	13:07:45	267	7.9	8.40	436.1					
11/16/2011	13:09:25	300	7.9	8.36	449.3					
11/16/2011	13:10:37					90 bbl Cement Back to Surface				
11/16/2011	13:10:37	336	7.9	8.35	458.8					
11/16/2011	13:11:05	347	7.9	8.35	462.5					
11/16/2011	13:12:45	393	7.9	8.34	475.7					
11/16/2011	13:14:25	457	7.9	8.32	488.9					
11/16/2011	13:16:05	328	4.5	8.35	501.6					
11/16/2011	13:17:45	376	5.0	8.35	509.9					
11/16/2011	13:19:25	407	5.0	8.35	518.2					
11/16/2011	13:21:05	437	5.0	8.35	526.5					
11/16/2011	13:22:45	410	5.0	8.35	534.8					
11/16/2011	13:24:25	505	5.0	8.35	543.1					
11/16/2011	13:26:05	421	5.0	8.35	551.4					
11/16/2011	13:27:45	404	2.0	8.35	557.7					
11/16/2011	13:29:25	1148	0.0	8.35	559.4					
11/16/2011	13:31:05	1143	0.0	8.35	559.4					
11/16/2011	13:32:45	1142	0.0	8.36	559.4					
11/16/2011	13:34:25	751	0.0	8.36	559.4					
11/16/2011	13:35:46					Bump Top Plug				
11/16/2011	13:35:46	-48	0.0	8.36	559.4					
11/16/2011	13:35:47					End Displacement				

Well			Field		Job Start		Customer		Job Number	
SGU 8506B 8506B			N Parachute		Nov/16/2011		Encana		BQMF-00342	
Date	Time 24-hr clock	Treating Pressure PSI		Flow Rate B/M	Density LB/G		Volume BBL		Message	
11/16/2011	13:35:49								Bump Plug to 1200 psi	
11/16/2011	13:35:49	-48		0.0	8.36		559.4			
11/16/2011	13:35:50								Bled Off Pressure	
11/16/2011	13:35:50								Floats Held	
11/16/2011	13:35:50	-48		0.0	8.36		559.4			
11/16/2011	13:35:51								Wait to Clean out Flow Lines	
11/16/2011	13:35:51	-48		0.0	8.36		559.4			
11/16/2011	13:36:05	-42		0.0	8.36		559.4			
11/16/2011	13:37:45	-41		0.0	8.36		559.4			
11/16/2011	13:39:25	-11		1.7	9.50		561.3			
11/16/2011	13:41:05	-43		0.6	8.32		564.8			
11/16/2011	13:42:45	-45		0.0	8.36		564.8			
11/16/2011	13:43:13								Pump 40 bbl Water to Clean Flow Line	
11/16/2011	13:43:13	13		2.0	8.34		565.1			
11/16/2011	13:44:25	35		2.7	8.26		566.1			
11/16/2011	13:46:05	243		6.5	8.37		573.2			
11/16/2011	13:47:45	240		6.5	8.35		584.0			
11/16/2011	13:49:25								Wait on Parasite Line	
11/16/2011	13:49:25	-39		0.0	8.36		586.5			
11/16/2011	13:51:05	-40		0.0	8.36		586.5			
11/16/2011	13:52:45	-40		0.0	8.36		586.5			
11/16/2011	13:54:25	-39		0.0	8.36		586.5			
11/16/2011	13:56:05	-39		0.0	8.36		586.5			
11/16/2011	13:57:45	-39		0.0	8.36		586.5			
11/16/2011	13:59:25	-39		0.0	8.36		586.5			
11/16/2011	14:01:05	-39		0.0	8.36		586.5			
11/16/2011	14:02:45	-38		0.0	8.36		586.5			
11/16/2011	14:04:25	-39		0.0	8.36		586.5			
11/16/2011	14:06:05	-38		0.0	8.36		586.5			
11/16/2011	14:07:45	-38		0.0	8.36		586.5			
11/16/2011	14:09:25	-39		0.0	8.36		586.5			
11/16/2011	14:11:05	-38		0.0	8.36		586.5			
11/16/2011	14:12:45	-38		0.0	8.36		586.5			
11/16/2011	14:14:25	-38		0.0	8.36		586.5			
11/16/2011	14:16:05	-37		0.0	8.37		586.5			
11/16/2011	14:17:45	-38		0.0	8.37		586.5			
11/16/2011	14:19:25	-38		0.0	8.37		586.5			
11/16/2011	14:21:05	-38		0.0	8.37		586.5			
11/16/2011	14:22:45	-38		0.0	8.37		586.5			
11/16/2011	14:24:25	-38		0.0	8.37		586.5			
11/16/2011	14:26:05	-37		0.0	8.37		586.5			
11/16/2011	14:27:45	-34		0.0	8.37		586.5			
11/16/2011	14:29:25	-34		0.0	8.37		586.5			
11/16/2011	14:31:05	-33		0.0	8.37		586.5			
11/16/2011	14:32:45	-32		0.0	8.37		586.5			
11/16/2011	14:34:25	-32		0.0	8.37		586.5			
11/16/2011	14:36:05	-31		0.0	8.37		586.5			
11/16/2011	14:37:45	-30		0.0	8.37		586.5			
11/16/2011	14:39:25	-30		0.0	8.37		586.5			
11/16/2011	14:41:05	-29		0.0	8.37		586.5			
11/16/2011	14:42:45	-29		0.0	8.37		586.5			
11/16/2011	14:44:25	-29		0.0	8.37		586.5			
11/16/2011	14:46:05	-29		0.0	8.37		586.5			
11/16/2011	14:47:10								Pump Parasite Line	

Well			Field		Job Start	Customer	Job Number
SGU 8506B 8506B			N Parachute		Nov/16/2011	Encana	BQMF-00342
Date	Time 24-hr clock	Treating Pressure PSI	Flow Rate B/M	Density LB/G	Volume BBL	Message	
11/16/2011	14:47:45	-27	0.0	8.37	586.5		
11/16/2011	14:49:25	-26	0.0	8.37	586.5		
11/16/2011	14:51:05	42	3.2	8.43	589.3		
11/16/2011	14:52:45	476	2.4	8.46	593.7		
11/16/2011	14:54:25	-31	0.0	8.36	596.9		
11/16/2011	14:54:51					Pump 5 bbl Water	
11/16/2011	14:54:51	-40	0.0	8.36	596.9		
11/16/2011	14:54:52					Pressure up to 500 psi	
11/16/2011	14:54:52					Open Parasite	
11/16/2011	14:54:52					Pump 5 bbl Water	
11/16/2011	14:54:52	-40	0.0	8.36	596.9		
11/16/2011	14:54:54					Rig Down	
11/16/2011	14:54:54					End Job	

Post Job Summary

Average Pump Rates, bbl/min					Volume of Fluid Injected, bbl			
Slurry 5.9	N2	Mud 0.0	Maximum Rate 8.0	Total Slurry 596.9	Mud 0.0	Spacer 49.9	N2	
Treating Pressure Summary, psi					Breakdown Fluid			
Maximum 3194	Final 0	Average 359	Bump Plug to 1200	Breakdown	Type FreshWater	Volume 527.0 bbl	Density 8.34 lb/gal	
Avg. N2 Percent		Designed Slurry Volume 339.0 bbl	Displacement 170.8 bbl	Mix Water Temp 75 degF	Cement Circulated to Surface? <input type="checkbox"/>		Volume	
					Washed Thru Perfs <input type="checkbox"/>		To	
Customer or Authorized Representative Mike Quintana			Schlumberger Supervisor Tom Leduc			Circulation Lost <input type="checkbox"/>	Job Completed <input type="checkbox"/>	
						-		-