

KERR-MCGEE OIL & GAS ONSHORE LP

Location: COLORADO Slot: SLOT#01 CANNON 1N-11HZ (502'FSL & 548'FEL, SEC.11)
Field: WELD COUNTY (KERR MCGEE) Well: CANNON 1N-11HZ
Facility: SEC.11-T2N-R66W Wellbore: CANNON 1N-11HZ PWB

Plot reference wellpath is CANNON 1N-11HZ (REV-D.0) PWP

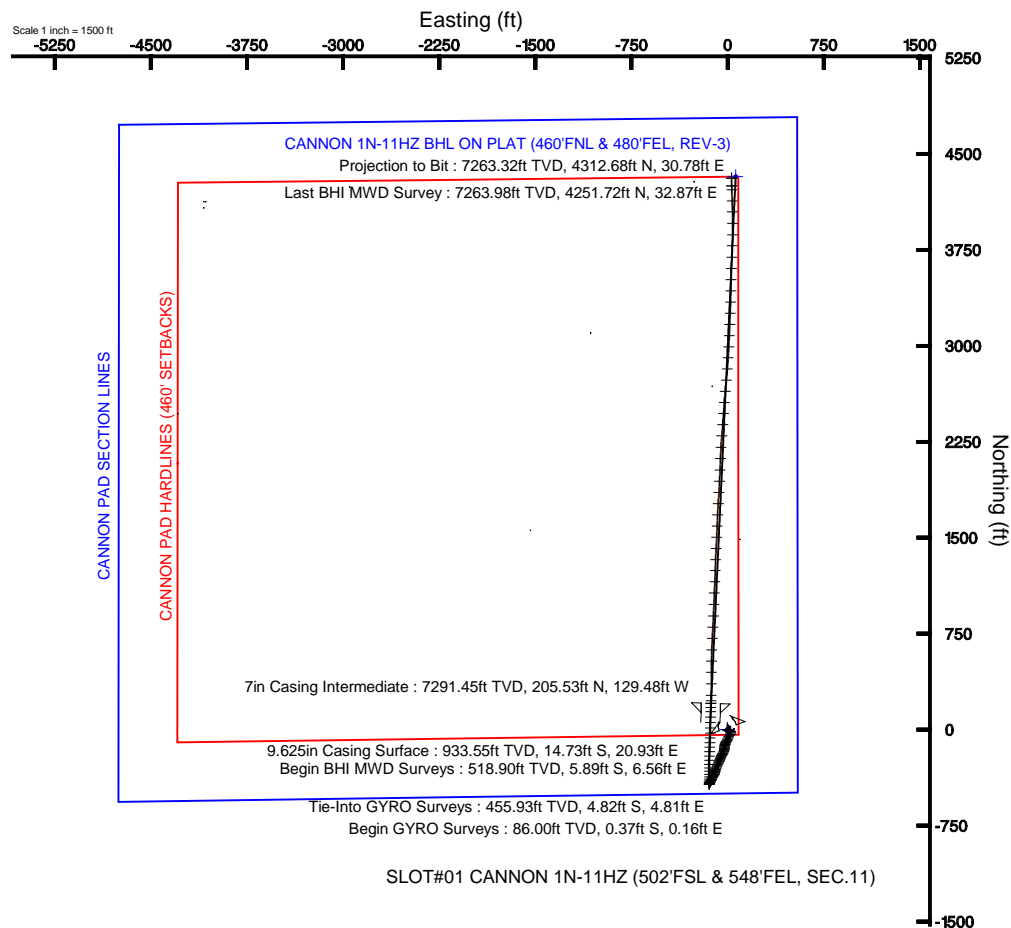
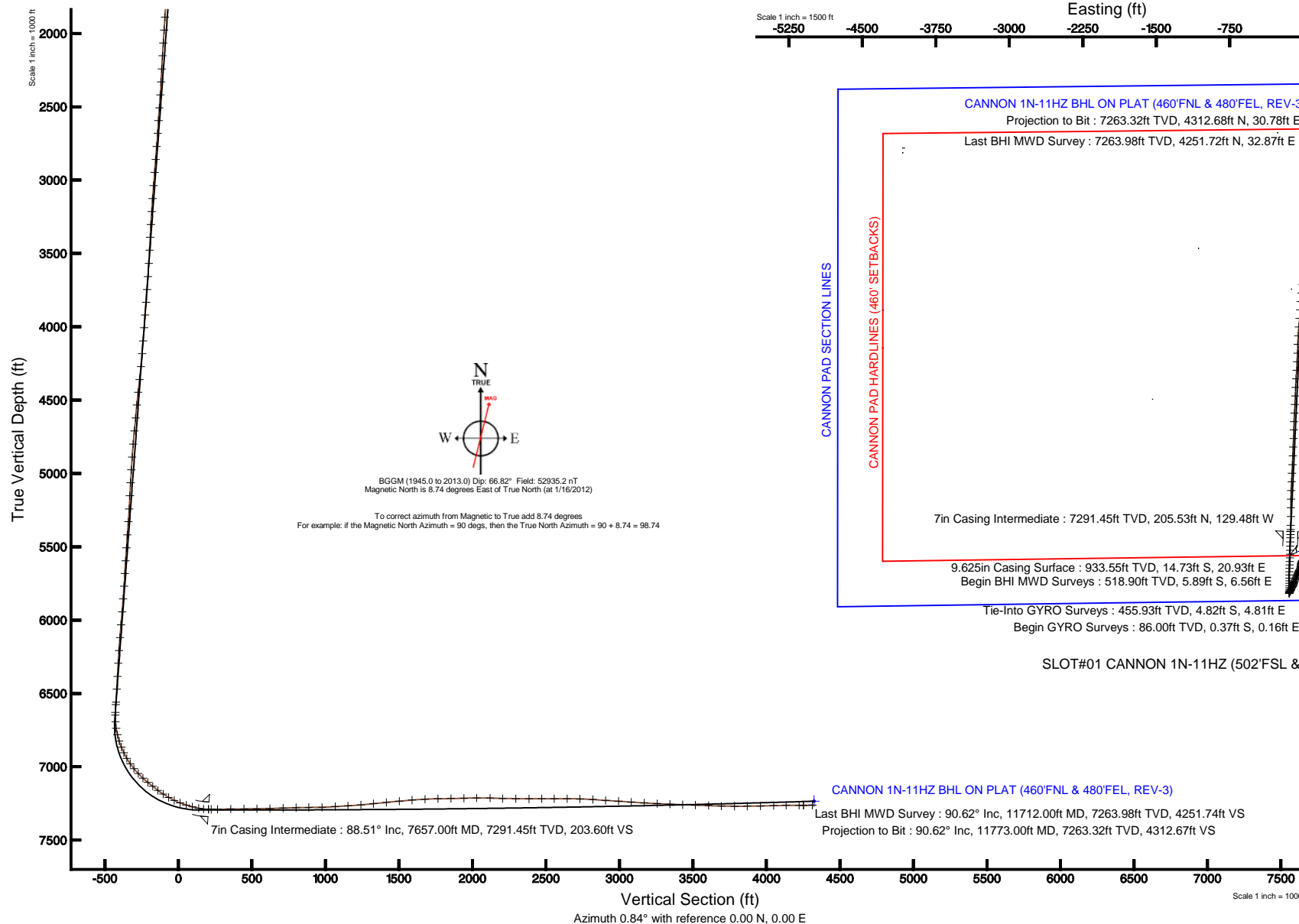
True vertical depths are referenced to XTREME 8 (RKB) Grid System: NAD83 / Lambert Colorado SP, Northern Zone (501), US feet

Measured depths are referenced to XTREME 8 (RKB) North Reference: True north

XTREME 8 (RKB) to Mean Sea Level: 5074 feet Scale: True distance

Mean Sea Level to Mud line (At Slot: SLOT#01 CANNON 1N-11HZ (502'FSL & 548'FEL, SEC.11)): 0 feet Depths are in feet

Coordinates are in feet referenced to Slot Created by: wilsje02 on 2/27/2012





Actual Wellpath Report

CANNON 1N-11HZ AWP

Page 1 of 6



REFERENCE WELLPATH IDENTIFICATION			
Operator	KERR-MCGEE OIL & GAS ONSHORE LP	Slot	SLOT#01 CANNON 1N-11HZ (502'FSL & 548'FEL, SEC.11)
Area	COLORADO	Well	CANNON 1N-11HZ
Field	WELD COUNTY (KERR MCGEE)	Wellbore	CANNON 1N-11HZ AWB
Facility	SEC.11-T2N-R66W		

REPORT SETUP INFORMATION			
Projection System	NAD83 / Lambert Colorado SP, Northern Zone (501), US feet	Software System	WellArchitect® 3.0.2
North Reference	True	User	Wilsjef02
Scale	0.999958	Report Generated	2/27/2012 at 09:08:51
Convergence at slot	0.49° East	Database/Source file	WellArchitectDB/CANNON_1N-11HZ_AWB.xml

WELLPATH LOCATION						
	Local coordinates		Grid coordinates		Geographic coordinates	
	North[ft]	East[ft]	Easting[US ft]	Northing[US ft]	Latitude	Longitude
Slot Location	0.10	-0.00	3213348.65	1297310.41	40°08'49.168"N	104°44'12.494"W
Facility Reference Pt			3213348.65	1297310.31	40°08'49.167"N	104°44'12.494"W
Field Reference Pt			3197771.84	1268891.29	40°04'09.600"N	104°47'36.000"W

WELLPATH DATUM			
Calculation method	Minimum curvature	XTREME 8 (RKB) to Facility Vertical Datum	5074.00ft
Horizontal Reference Pt	Slot	XTREME 8 (RKB) to Mean Sea Level	5074.00ft
Vertical Reference Pt	XTREME 8 (RKB)	XTREME 8 (RKB) to Mud Line at Slot (SLOT#01 CANNON 1N-11HZ (502'FSL & 548'FEL, SEC.11))	5074.00ft
MD Reference Pt	XTREME 8 (RKB)	Section Origin	N 0.00, E 0.00 ft
Field Vertical Reference	Mean Sea Level	Section Azimuth	0.84°



Actual Wellpath Report

CANNON 1N-11HZ AWP

Page 2 of 6



REFERENCE WELLPATH IDENTIFICATION

Operator	KERR-MCGEE OIL & GAS ONSHORE LP	Slot	SLOT#01 CANNON 1N-11HZ (502'FSL & 548'FEL, SEC.11)
Area	COLORADO	Well	CANNON 1N-11HZ
Field	WELD COUNTY (KERR MCGEE)	Wellbore	CANNON 1N-11HZ AWB
Facility	SEC.11-T2N-R66W		

WELLPATH DATA (151 stations) † = interpolated/extrapolated station

MD [ft]	Inclination [°]	Azimuth [°]	TVD [ft]	Vert Sect [ft]	North [ft]	East [ft]	Latitude	Longitude	DLS [°/100ft]	Comments
0.00†	0.000	157.019	0.00	0.00	0.00	0.00	40°08'49.168"N	104°44'12.494"W	0.00	
17.00	0.000	157.019	17.00	0.00	0.00	0.00	40°08'49.168"N	104°44'12.494"W	0.00	
86.00	0.676	157.019	86.00	-0.37	-0.37	0.16	40°08'49.164"N	104°44'12.492"W	0.98	Begin GYRO Surveys
179.00	0.512	152.965	178.99	-1.24	-1.25	0.56	40°08'49.156"N	104°44'12.487"W	0.18	
272.00	1.139	142.518	271.98	-2.33	-2.35	1.31	40°08'49.145"N	104°44'12.477"W	0.69	
365.00	1.290	128.670	364.96	-3.70	-3.74	2.69	40°08'49.131"N	104°44'12.459"W	0.35	
456.00	1.752	108.449	455.93	-4.75	-4.82	4.81	40°08'49.120"N	104°44'12.432"W	0.77	Tie-Into GYRO Surveys
519.00	2.060	132.300	518.90	-5.79	-5.89	6.56	40°08'49.110"N	104°44'12.409"W	1.34	Begin BHI MWD Surveys
609.00	2.440	114.510	608.83	-7.63	-7.77	9.50	40°08'49.091"N	104°44'12.372"W	0.88	
700.00	2.190	119.600	699.75	-9.24	-9.43	12.78	40°08'49.075"N	104°44'12.329"W	0.36	
791.00	2.270	123.310	790.69	-11.05	-11.28	15.80	40°08'49.057"N	104°44'12.291"W	0.18	
882.00	2.580	124.170	881.60	-13.14	-13.42	19.00	40°08'49.035"N	104°44'12.249"W	0.34	
995.00	2.570	123.780	994.49	-15.92	-16.26	23.21	40°08'49.007"N	104°44'12.195"W	0.02	
1085.00	4.250	171.910	1084.34	-20.31	-20.68	25.35	40°08'48.964"N	104°44'12.168"W	3.53	
1176.00	5.820	191.800	1175.00	-28.17	-28.54	24.88	40°08'48.886"N	104°44'12.174"W	2.56	
1267.00	6.420	210.040	1265.49	-37.14	-37.46	21.39	40°08'48.798"N	104°44'12.219"W	2.23	
1358.00	7.080	209.750	1355.85	-46.49	-46.74	16.06	40°08'48.706"N	104°44'12.287"W	0.73	
1450.00	7.380	209.940	1447.12	-56.62	-56.78	10.30	40°08'48.607"N	104°44'12.361"W	0.33	
1540.00	6.530	201.370	1536.46	-66.46	-66.55	5.55	40°08'48.510"N	104°44'12.423"W	1.49	
1632.00	5.410	204.820	1627.96	-75.33	-75.36	1.82	40°08'48.423"N	104°44'12.471"W	1.28	
1719.00	4.330	207.410	1714.65	-82.01	-82.00	-1.41	40°08'48.358"N	104°44'12.512"W	1.27	
1806.00	4.390	210.070	1801.40	-87.85	-87.80	-4.59	40°08'48.300"N	104°44'12.553"W	0.24	
1892.00	4.350	214.550	1887.15	-93.44	-93.33	-8.09	40°08'48.246"N	104°44'12.598"W	0.40	
1981.00	4.030	216.250	1975.91	-98.80	-98.63	-11.85	40°08'48.193"N	104°44'12.647"W	0.39	
2069.00	4.090	199.140	2063.69	-104.30	-104.09	-14.71	40°08'48.139"N	104°44'12.683"W	1.37	
2157.00	3.630	196.720	2151.49	-109.96	-109.72	-16.54	40°08'48.084"N	104°44'12.707"W	0.55	
2246.00	3.240	194.280	2240.33	-115.11	-114.86	-17.97	40°08'48.033"N	104°44'12.725"W	0.47	
2335.00	2.910	191.580	2329.20	-119.78	-119.51	-19.04	40°08'47.987"N	104°44'12.739"W	0.40	
2424.00	4.150	198.940	2418.03	-125.06	-124.77	-20.54	40°08'47.935"N	104°44'12.759"W	1.48	
2512.00	4.320	191.080	2505.79	-131.35	-131.03	-22.21	40°08'47.873"N	104°44'12.780"W	0.69	
2599.00	3.530	186.730	2592.59	-137.24	-136.91	-23.16	40°08'47.815"N	104°44'12.792"W	0.97	
2687.00	4.130	184.210	2680.39	-143.09	-142.76	-23.71	40°08'47.757"N	104°44'12.799"W	0.71	
2776.00	4.650	183.810	2769.13	-149.90	-149.56	-24.18	40°08'47.690"N	104°44'12.805"W	0.59	
2865.00	4.470	192.490	2857.85	-156.90	-156.54	-25.17	40°08'47.621"N	104°44'12.818"W	0.80	
2954.00	4.280	187.070	2946.59	-163.59	-163.22	-26.33	40°08'47.555"N	104°44'12.833"W	0.51	
3044.00	4.760	198.260	3036.31	-170.50	-170.10	-27.91	40°08'47.487"N	104°44'12.853"W	1.11	
3133.00	4.320	199.270	3125.03	-177.20	-176.78	-30.18	40°08'47.421"N	104°44'12.883"W	0.50	
3221.00	4.630	214.410	3212.77	-183.30	-182.83	-33.28	40°08'47.361"N	104°44'12.923"W	1.38	
3310.00	3.870	210.480	3301.52	-188.91	-188.39	-36.83	40°08'47.306"N	104°44'12.968"W	0.91	
3398.00	3.210	206.620	3389.35	-193.71	-193.15	-39.44	40°08'47.259"N	104°44'13.002"W	0.80	
3486.00	3.790	211.730	3477.19	-198.42	-197.82	-42.08	40°08'47.213"N	104°44'13.036"W	0.75	
3576.00	3.460	208.860	3567.01	-203.37	-202.73	-44.95	40°08'47.165"N	104°44'13.073"W	0.42	
3666.00	3.830	203.740	3656.83	-208.54	-207.86	-47.47	40°08'47.114"N	104°44'13.105"W	0.55	
3755.00	4.590	201.370	3745.59	-214.61	-213.90	-49.97	40°08'47.054"N	104°44'13.137"W	0.88	
3843.00	4.700	200.070	3833.30	-221.31	-220.57	-52.49	40°08'46.988"N	104°44'13.170"W	0.17	
3930.00	4.630	206.140	3920.01	-227.85	-227.07	-55.26	40°08'46.924"N	104°44'13.206"W	0.57	
4016.00	4.860	200.840	4005.72	-234.42	-233.59	-58.08	40°08'46.860"N	104°44'13.242"W	0.58	
4106.00	4.860	203.870	4095.39	-241.51	-240.64	-60.98	40°08'46.790"N	104°44'13.279"W	0.29	
4194.00	5.020	202.740	4183.06	-248.51	-247.60	-63.98	40°08'46.721"N	104°44'13.318"W	0.21	
4283.00	6.200	204.850	4271.64	-256.51	-255.55	-67.50	40°08'46.643"N	104°44'13.363"W	1.35	
4371.00	7.100	204.520	4359.04	-265.84	-264.81	-71.76	40°08'46.551"N	104°44'13.418"W	1.02	
4459.00	6.970	205.010	4446.38	-275.69	-274.60	-76.27	40°08'46.454"N	104°44'13.476"W	0.16	
4546.00	5.810	201.930	4532.84	-284.61	-283.46	-80.15	40°08'46.367"N	104°44'13.526"W	1.39	
4635.00	5.660	198.780	4621.39	-292.99	-291.80	-83.24	40°08'46.284"N	104°44'13.566"W	0.39	
4724.00	5.690	203.620	4709.96	-301.24	-300.00	-86.42	40°08'46.203"N	104°44'13.607"W	0.54	
4814.00	4.920	204.460	4799.57	-308.89	-307.60	-89.81	40°08'46.128"N	104°44'13.650"W	0.86	
4903.00	4.530	202.140	4888.27	-315.66	-314.33	-92.71	40°08'46.062"N	104°44'13.688"W	0.49	
4991.00	4.060	199.390	4976.02	-321.85	-320.48	-95.06	40°08'46.001"N	104°44'13.718"W	0.58	
5079.00	3.080	192.410	5063.85	-327.12	-325.73	-96.60	40°08'45.949"N	104°44'13.738"W	1.22	
5168.00	3.350	193.900	5152.71	-331.99	-330.59	-97.74	40°08'45.901"N	104°44'13.753"W	0.32	



Actual Wellpath Report

CANNON 1N-11HZ AWP

Page 3 of 6



REFERENCE WELLPATH IDENTIFICATION

Operator	KERR-MCGEE OIL & GAS ONSHORE LP	Slot	SLOT#01 CANNON 1N-11HZ (502'FSL & 548'FEL, SEC.11)
Area	COLORADO	Well	CANNON 1N-11HZ
Field	WELD COUNTY (KERR MCGEE)	Wellbore	CANNON 1N-11HZ AWB
Facility	SEC.11-T2N-R66W		

WELLPATH DATA (151 stations) † = interpolated/extrapolated station

MD [ft]	Inclination [°]	Azimuth [°]	TVD [ft]	Vert Sect [ft]	North [ft]	East [ft]	Latitude	Longitude	DLS [°/100ft]	Comments
5258.00	2.930	199.080	5242.58	-336.74	-335.32	-99.12	40°08'45.854"N	104°44'13.770"W	0.56	
5345.00	4.540	189.070	5329.39	-342.26	-340.82	-100.39	40°08'45.800"N	104°44'13.787"W	1.99	
5435.00	4.350	196.830	5419.12	-349.07	-347.60	-101.94	40°08'45.733"N	104°44'13.807"W	0.70	
5524.00	3.950	205.580	5507.89	-355.10	-353.60	-104.24	40°08'45.674"N	104°44'13.836"W	0.84	
5612.00	4.420	212.130	5595.65	-360.75	-359.21	-107.36	40°08'45.618"N	104°44'13.876"W	0.76	
5700.00	4.010	211.740	5683.41	-366.29	-364.69	-110.78	40°08'45.564"N	104°44'13.921"W	0.47	
5786.00	4.280	211.780	5769.19	-371.62	-369.98	-114.05	40°08'45.512"N	104°44'13.963"W	0.31	
5874.00	4.470	207.130	5856.93	-377.51	-375.82	-117.34	40°08'45.454"N	104°44'14.005"W	0.46	
5962.00	5.020	201.880	5944.63	-384.18	-382.45	-120.34	40°08'45.389"N	104°44'14.044"W	0.80	
6050.00	5.920	200.120	6032.23	-392.05	-390.28	-123.34	40°08'45.311"N	104°44'14.082"W	1.04	
6138.00	5.290	206.950	6119.81	-399.98	-398.16	-126.74	40°08'45.233"N	104°44'14.126"W	1.04	
6227.00	4.190	212.400	6208.50	-406.44	-404.56	-130.34	40°08'45.170"N	104°44'14.172"W	1.33	
6314.00	3.390	206.320	6295.31	-411.47	-409.55	-133.18	40°08'45.121"N	104°44'14.209"W	1.03	
6404.00	3.640	204.680	6385.14	-416.48	-414.53	-135.56	40°08'45.072"N	104°44'14.240"W	0.30	
6490.00	3.550	206.340	6470.98	-421.38	-419.40	-137.88	40°08'45.023"N	104°44'14.269"W	0.16	
6580.00	3.680	206.870	6560.80	-426.49	-424.47	-140.42	40°08'44.973"N	104°44'14.341"W	0.15	
6596.00	3.940	205.930	6576.76	-427.45	-425.42	-140.89	40°08'44.964"N	104°44'14.308"W	1.67	
6650.00	3.030	224.220	6630.66	-430.17	-428.12	-142.70	40°08'44.937"N	104°44'14.332"W	2.64	
6668.00	1.900	235.620	6648.65	-430.69	-428.62	-143.28	40°08'44.932"N	104°44'14.339"W	6.81	
6713.00	3.390	4.930	6693.62	-429.79	-427.72	-143.78	40°08'44.941"N	104°44'14.345"W	10.72	
6758.00	8.310	4.180	6738.37	-425.21	-423.15	-143.43	40°08'44.986"N	104°44'14.341"W	10.93	
6803.00	13.300	4.930	6782.56	-416.80	-414.74	-142.74	40°08'45.069"N	104°44'14.332"W	11.09	
6847.00	17.600	4.110	6824.96	-405.10	-403.06	-141.83	40°08'45.185"N	104°44'14.320"W	9.79	
6891.00	22.060	4.830	6866.34	-390.21	-388.18	-140.66	40°08'45.332"N	104°44'14.305"W	10.15	
6934.00	26.490	2.360	6905.53	-372.56	-370.55	-139.58	40°08'45.506"N	104°44'14.291"W	10.57	
6977.00	29.970	359.200	6943.41	-352.23	-350.22	-139.34	40°08'45.707"N	104°44'14.288"W	8.81	
7020.00	34.330	357.860	6979.81	-329.38	-327.35	-139.94	40°08'45.933"N	104°44'14.296"W	10.27	
7063.00	38.970	358.750	7014.30	-303.74	-301.70	-140.69	40°08'46.187"N	104°44'14.306"W	10.86	
7107.00	43.490	0.290	7047.38	-274.76	-272.71	-140.91	40°08'46.473"N	104°44'14.309"W	10.53	
7152.00	47.580	1.080	7078.90	-242.65	-240.61	-140.52	40°08'46.790"N	104°44'14.304"W	9.17	
7195.00	50.720	1.230	7107.02	-210.13	-208.09	-139.87	40°08'47.112"N	104°44'14.295"W	7.31	
7238.00	51.250	1.650	7134.09	-176.72	-174.69	-139.03	40°08'47.442"N	104°44'14.284"W	1.45	
7283.00	52.450	2.140	7161.89	-141.34	-139.32	-137.85	40°08'47.791"N	104°44'14.269"W	2.80	
7328.00	57.220	2.160	7187.80	-104.57	-102.57	-136.47	40°08'48.154"N	104°44'14.251"W	10.60	
7371.00	60.430	2.700	7210.05	-67.80	-65.82	-134.91	40°08'48.518"N	104°44'14.231"W	7.54	
7414.00	63.290	1.670	7230.33	-29.90	-27.94	-133.47	40°08'48.892"N	104°44'14.213"W	6.98	
7458.00	69.190	0.850	7248.05	10.35	12.31	-132.59	40°08'49.290"N	104°44'14.201"W	13.52	
7502.00	73.150	0.370	7262.25	51.99	53.94	-132.15	40°08'49.701"N	104°44'14.196"W	9.06	
7546.00	74.080	0.700	7274.66	94.20	96.15	-131.76	40°08'50.118"N	104°44'14.191"W	2.23	
7590.00	79.450	1.010	7284.73	137.02	138.96	-131.12	40°08'50.541"N	104°44'14.182"W	12.22	
7623.00	84.420	1.330	7289.36	169.68	171.62	-130.45	40°08'50.864"N	104°44'14.174"W	15.09	
7657.00†	88.513	1.932	7291.45	203.60	205.53	-129.48	40°08'51.199"N	104°44'14.161"W	12.17	7" Casing Point
7675.00	90.680	2.250	7291.58	221.60	223.52	-128.83	40°08'51.377"N	104°44'14.153"W	12.17	
7719.00	91.010	1.690	7290.93	265.59	267.49	-127.31	40°08'51.811"N	104°44'14.133"W	1.48	
7808.00	90.650	0.570	7289.64	354.57	356.46	-125.56	40°08'52.691"N	104°44'14.111"W	1.32	
7898.00	90.650	0.310	7288.62	444.56	446.45	-124.87	40°08'53.580"N	104°44'14.102"W	0.29	
7986.00	90.740	0.170	7287.55	532.55	534.44	-124.50	40°08'54.449"N	104°44'14.097"W	0.19	
8074.00	91.510	2.290	7285.83	620.53	622.40	-122.61	40°08'55.319"N	104°44'14.073"W	2.56	
8164.00	92.140	2.520	7282.96	710.45	712.28	-118.84	40°08'56.207"N	104°44'14.024"W	0.75	
8253.00	91.480	3.500	7280.15	799.34	801.11	-114.17	40°08'57.085"N	104°44'13.964"W	1.33	
8340.00	90.740	2.570	7278.46	886.26	887.97	-109.56	40°08'57.943"N	104°44'13.905"W	1.37	
8430.00	91.110	1.970	7277.01	976.22	977.88	-106.00	40°08'58.832"N	104°44'13.859"W	0.78	
8519.00	94.010	2.760	7273.04	1065.09	1066.71	-102.33	40°08'59.709"N	104°44'13.812"W	3.38	
8607.00	93.700	2.430	7267.12	1152.85	1154.42	-98.35	40°09'00.576"N	104°44'13.761"W	0.51	
8695.00	94.650	1.770	7260.71	1240.59	1242.13	-95.14	40°09'01.443"N	104°44'13.719"W	1.31	
8781.00	95.430	1.900	7253.16	1326.25	1327.75	-92.39	40°09'02.289"N	104°44'13.684"W	0.92	
8869.00	96.320	2.930	7244.15	1413.75	1415.21	-88.71	40°09'03.153"N	104°44'13.636"W	1.54	
8957.00	95.090	3.000	7235.40	1501.25	1502.65	-84.18	40°09'04.017"N	104°44'13.578"W	1.40	
9045.00	94.290	2.010	7228.21	1588.92	1590.27	-80.34	40°09'04.883"N	104°44'13.529"W	1.44	
9133.00	93.110	2.440	7222.53	1676.71	1678.02	-76.93	40°09'05.750"N	104°44'13.485"W	1.43	



Actual Wellpath Report

CANNON 1N-11HZ AWP

Page 4 of 6



REFERENCE WELLPATH IDENTIFICATION

Operator	KERR-MCGEE OIL & GAS ONSHORE LP	Slot	SLOT#01 CANNON 1N-11HZ (502'FSL & 548'FEL, SEC.11)
Area	COLORADO	Well	CANNON 1N-11HZ
Field	WELD COUNTY (KERR MCGEE)	Wellbore	CANNON 1N-11HZ AWB
Facility	SEC.11-T2N-R66W		

WELLPATH DATA (151 stations)

MD [ft]	Inclination [°]	Azimuth [°]	TVD [ft]	Vert Sect [ft]	North [ft]	East [ft]	Latitude	Longitude	DLS [°/100ft]	Comments
9222.00	90.890	3.870	7219.42	1765.57	1766.82	-72.04	40°09'06.628"N	104°44'13.422"W	2.97	
9309.00	91.200	3.110	7217.84	1852.46	1853.65	-66.74	40°09'07.486"N	104°44'13.354"W	0.94	
9398.00	91.450	3.030	7215.78	1941.37	1942.50	-61.98	40°09'08.364"N	104°44'13.292"W	0.29	
9485.00	90.740	2.220	7214.12	2028.31	2029.39	-57.99	40°09'09.223"N	104°44'13.241"W	1.24	
9576.00	88.550	2.270	7214.68	2119.28	2120.31	-54.43	40°09'10.121"N	104°44'13.195"W	2.41	
9662.00	88.460	3.170	7216.92	2205.20	2206.18	-50.35	40°09'10.970"N	104°44'13.142"W	1.05	
9752.00	88.920	4.660	7218.98	2295.05	2295.95	-44.21	40°09'11.857"N	104°44'13.063"W	1.73	
9842.00	89.850	4.380	7219.95	2384.86	2385.66	-37.11	40°09'12.743"N	104°44'12.972"W	1.08	
9928.00	90.680	3.620	7219.55	2470.72	2471.45	-31.12	40°09'13.591"N	104°44'12.895"W	1.31	
10014.00	89.780	4.710	7219.20	2556.58	2557.22	-24.87	40°09'14.439"N	104°44'12.814"W	1.64	
10101.00	90.120	5.850	7219.28	2643.31	2643.85	-16.86	40°09'15.295"N	104°44'12.711"W	1.37	
10189.00	88.430	5.450	7220.39	2730.99	2731.41	-8.20	40°09'16.160"N	104°44'12.600"W	1.97	
10277.00	85.990	4.330	7224.68	2818.66	2818.98	-0.71	40°09'17.025"N	104°44'12.503"W	3.05	
10365.00	86.210	3.480	7230.66	2906.33	2906.57	5.27	40°09'17.891"N	104°44'12.426"W	1.00	
10452.00	86.180	3.300	7236.43	2993.05	2993.23	10.40	40°09'18.747"N	104°44'12.360"W	0.21	
10540.00	86.270	2.490	7242.23	3080.81	3080.92	14.84	40°09'19.614"N	104°44'12.303"W	0.92	
10628.00	86.520	1.520	7247.76	3168.61	3168.69	17.91	40°09'20.481"N	104°44'12.263"W	1.14	
10716.00	87.410	2.780	7252.42	3256.46	3256.51	21.21	40°09'21.349"N	104°44'12.221"W	1.75	
10803.00	87.540	1.320	7256.25	3343.36	3343.36	24.32	40°09'22.207"N	104°44'12.181"W	1.68	
10890.00	87.750	1.560	7259.83	3430.28	3430.26	26.50	40°09'23.066"N	104°44'12.153"W	0.37	
10977.00	88.090	0.750	7262.99	3517.22	3517.19	28.25	40°09'23.925"N	104°44'12.130"W	1.01	
11066.00	88.030	2.160	7266.00	3606.16	3606.10	30.51	40°09'24.804"N	104°44'12.101"W	1.58	
11153.00	88.300	2.340	7268.79	3693.09	3692.99	33.93	40°09'25.662"N	104°44'12.057"W	0.37	
11243.00	89.910	2.130	7270.19	3783.05	3782.91	37.44	40°09'26.551"N	104°44'12.012"W	1.80	
11330.00	90.310	0.810	7270.02	3870.04	3869.88	39.67	40°09'27.410"N	104°44'11.983"W	1.59	
11419.00	91.390	359.470	7268.70	3959.02	3958.87	39.89	40°09'28.290"N	104°44'11.980"W	1.93	
11509.00	91.760	358.660	7266.23	4048.95	4048.82	38.42	40°09'29.179"N	104°44'11.999"W	0.99	
11595.00	90.430	358.850	7264.59	4134.87	4134.78	36.55	40°09'30.028"N	104°44'12.023"W	1.56	
11682.00	90.120	357.750	7264.17	4221.78	4221.74	33.97	40°09'30.887"N	104°44'12.057"W	1.31	
11712.00	90.620	358.040	7263.98	4251.74	4251.72	32.87	40°09'31.184"N	104°44'12.071"W	1.93	Last BHI MWD Survey
11773.00	90.620	358.040	7263.32	4312.67	4312.68	30.78	40°09'31.786"N	104°44'12.098"W	0.00	Projection to Bit

HOLE & CASING SECTIONS - Ref Wellbore: CANNON 1N-11HZ AWB Ref Wellpath: CANNON 1N-11HZ AWP

String/Diameter	Start MD [ft]	End MD [ft]	Interval [ft]	Start TVD [ft]	End TVD [ft]	Start N/S [ft]	Start E/W [ft]	End N/S [ft]	End E/W [ft]
13.5in Open Hole	17.00	934.00	917.00	17.00	933.55	0.00	0.00	-14.73	20.93
9.625in Casing Surface	17.00	934.00	917.00	17.00	933.55	0.00	0.00	-14.73	20.93
8.75in Open Hole	934.00	7657.00	6723.00	933.55	7291.45	-14.73	20.93	205.53	-129.48
7in Casing Intermediate	17.00	7657.00	7640.00	17.00	7291.45	0.00	0.00	205.53	-129.48
6.125in Open Hole	7657.00	11773.00	4116.00	7291.45	7263.32	205.53	-129.48	4312.68	30.78



Actual Wellpath Report

CANNON 1N-11HZ AWP

Page 5 of 6



REFERENCE WELLPATH IDENTIFICATION			
Operator	KERR-MCGEE OIL & GAS ONSHORE LP	Slot	SLOT#01 CANNON 1N-11HZ (502'FSL & 548'FEL, SEC.11)
Area	COLORADO	Well	CANNON 1N-11HZ
Field	WELD COUNTY (KERR MCGEE)	Wellbore	CANNON 1N-11HZ AWB
Facility	SEC.11-T2N-R66W		

TARGETS									
Name	MD [ft]	TVD [ft]	North [ft]	East [ft]	Grid East [US ft]	Grid North [US ft]	Latitude	Longitude	Shape
CANNON PAD SECTION LINES		0.00	0.00	0.00	3213348.65	1297310.41	40°08'49.168"N	104°44'12.494"W	polygon
CANNON 1N-11HZ BHL ON PLAT (460'FNL & 480'FEL, REV-3)		7236.00	4323.39	63.67	3213375.10	1301634.00	40°09'31.892"N	104°44'11.674"W	point
CANNON PAD HARDLINES (460' SETBACKS)		7325.00	0.00	0.00	3213348.65	1297310.41	40°08'49.168"N	104°44'12.494"W	polygon

WELLPATH COMPOSITION - Ref Wellbore: CANNON 1N-11HZ AWB					Ref Wellpath: CANNON 1N-11HZ AWP	
Start MD [ft]	End MD [ft]	Positional Uncertainty Model	Log Name/Comment		Wellbore	
17.00	456.00	Gyrodata standard - Drop gyro or Multi-shot	GYRODATA SURVEYS 13 1/2" HOLE <86-456>		CANNON 1N-11HZ AWB	
456.00	882.00	NaviTrak (Standard)	BHI MWD SURVEYS 13 1/2" HOLE <519-882>		CANNON 1N-11HZ AWB	
882.00	7623.00	NaviTrak (Standard)	BHI MWD SURVEYS 8 3/4" HOLE <995-7623>		CANNON 1N-11HZ AWB	
7623.00	11712.00	OnTrak (Standard)	BHI MWD SURVEYS 6 1/8" HOLE <7675-7986>		CANNON 1N-11HZ AWB	
11712.00	11773.00	Blind Drilling (std)	Projection to bit		CANNON 1N-11HZ AWB	



Actual Wellpath Report

CANNON 1N-11HZ AWP

Page 6 of 6



REFERENCE WELLPATH IDENTIFICATION

Operator	KERR-MCGEE OIL & GAS ONSHORE LP	Slot	SLOT#01 CANNON 1N-11HZ (502'FSL & 548'FEL, SEC.11)
Area	COLORADO	Well	CANNON 1N-11HZ
Field	WELD COUNTY (KERR MCGEE)	Wellbore	CANNON 1N-11HZ AWB
Facility	SEC.11-T2N-R66W		

WELLPATH COMMENTS

MD [ft]	Inclination [°]	Azimuth [°]	TVD [ft]	Comment
86.00	0.676	157.019	86.00	Begin GYRO Surveys
456.00	1.752	108.449	455.93	Tie-Into GYRO Surveys
519.00	2.060	132.300	518.90	Begin BHI MWD Surveys
7657.00	88.513	1.932	7291.45	7" Casing Point
11712.00	90.620	358.040	7263.98	Last BHI MWD Survey
11773.00	90.620	358.040	7263.32	Projection to Bit