

# LOCATION DRAWING

VEGETATION:  
PASTURE

SURFACE USE:  
GRAZING

## REFERENCE POINT

LATITUDE: 40.61080

LONGITUDE: -104.08326

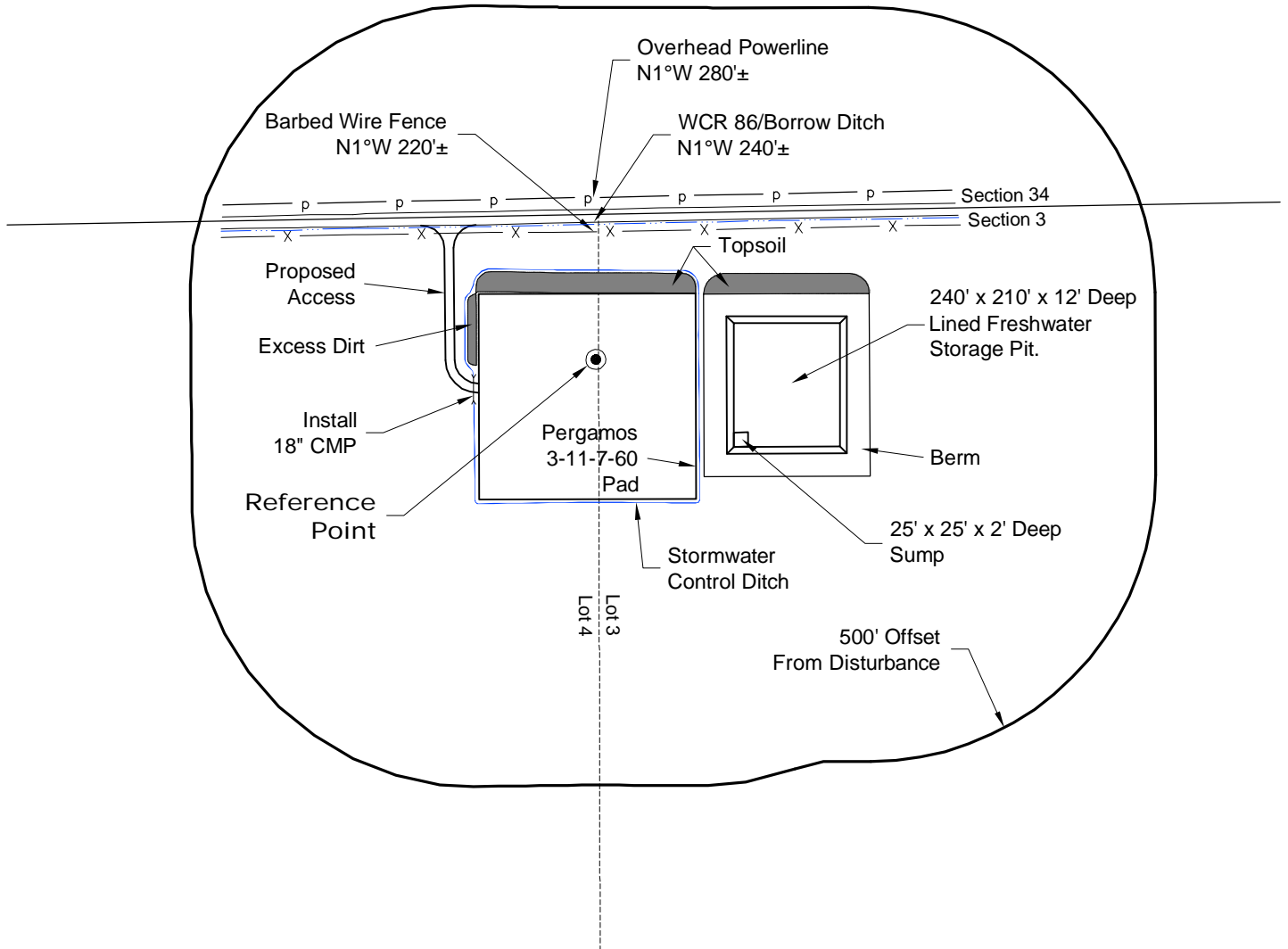
FOOTAGE: 254 FNL 1321 FWL

GROUND ELEVATION: 4921.7

PDOP: 1.8 DATE: 3/19/2012

INSTRUMENT OPERATOR:

MARC WOODARD



## NOTE:

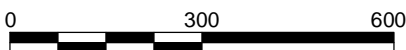
ALL PRODUCTION FACILITIES WILL BE ON PAD.

DISTURBANCE ACREAGE:  
4.1± DRILLING OPERATIONS  
2.3± FRESHWATER PIT  
1.0± INTERIM RECLAIM

3/28/12



North



Graphic Scale in Feet  
1" = 300'



LAND SURVEYING AND MAPPING  
LAFAYETTE - WINTER PARK  
Ph 303 666 0379 Fx 303 665 6320

**CARRIZO OIL & GAS, INC**  
**PERGAMOS 3-11-7-60 PAD**

**LOT 4 SECTION 3 T7N R60W**  
**6th PM WELD COUNTY COLORADO**