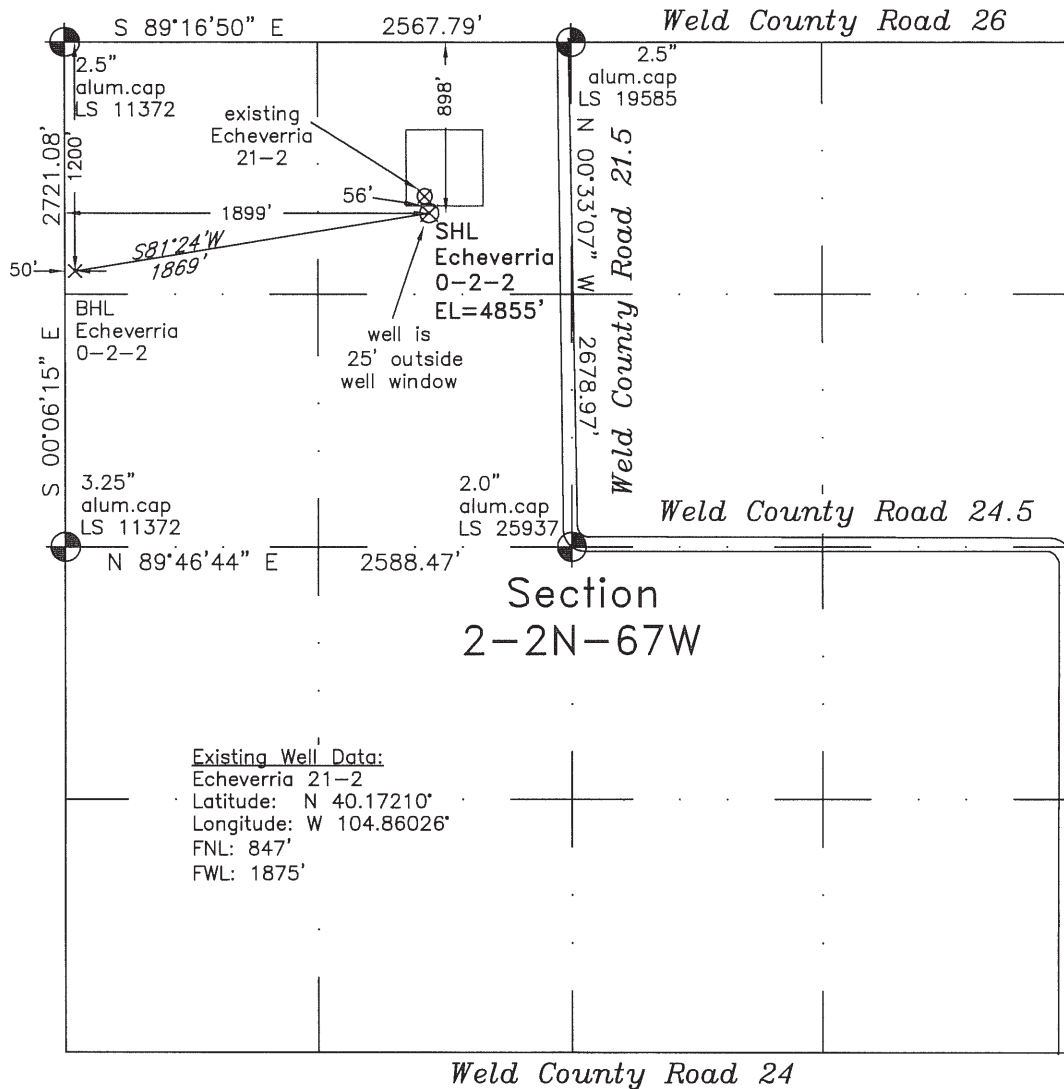


WELL LOCATION CERTIFICATE

THIS MAP DOES NOT REPRESENT A BOUNDARY SURVEY



Existing Well Data:
Echeverria 21-2
Latitude: N 40.17210°
Longitude: W 104.86026°
FNL: 847'
FWL: 1875'

In accordance with a request from Dave Bale of EnCana Oil & Gas (USA) Inc., Frederick Land Surveying, Inc. has determined the location of the **Echeverria 0-2-2** well site to be 898' FNL and 1899' FWL, (BHL 1200' FNL and 50' FWL), as measured at ninety (90) degrees from the section lines of Section 2, Township 2 North, Range 67 West of the 6th Principal Meridian, Weld County, Colorado.

Proposed Surface Hole Data:

Latitude: N 40.17196° BHL(40.17123°)
Longitude: W 104.86018° BHL(104.86680°)
Nearest: Building 894' northeast
Public Road 651' east
Property Line 443' south

Above Ground Utility 923' north
Railroad 12,000' east

PDOP: 2.2

Notes:

- 1) Bearings and distances based on NAD 83 Colorado North State Plane Coordinates using RTK GPS observations taken 3/17/10 by operator Tom Winans.
- 2) Conversion factor to ground (1.000271870).
- 3) Elevations based on NAVD 88 GPS heights and Geoid 2003 corrections.
- 4) See improvement map for visible improvements within 400 feet.
- 5) The location falls on agricultural land.

NOTICE: According to Colorado law you MUST commence any legal action based upon any defect in this W.L.C. within three years after you first discover such defect. In no event may any action based upon any defect in this W.L.C. be commenced more than ten years from this said date of the certification shown hereon.

I hereby certify that this Well Location Certificate was prepared by me or under my direct supervision on 3/23/10 for and on behalf of EnCana Oil & Gas (USA) Inc. and that it is a true and correct copy of the original Survey Plat and that it is not to be relied upon for establishment of fences, buildings, or other future improvement lines.

Alex Ronald Perkins LS#34176
Job #: 10020.001 3-23-2010