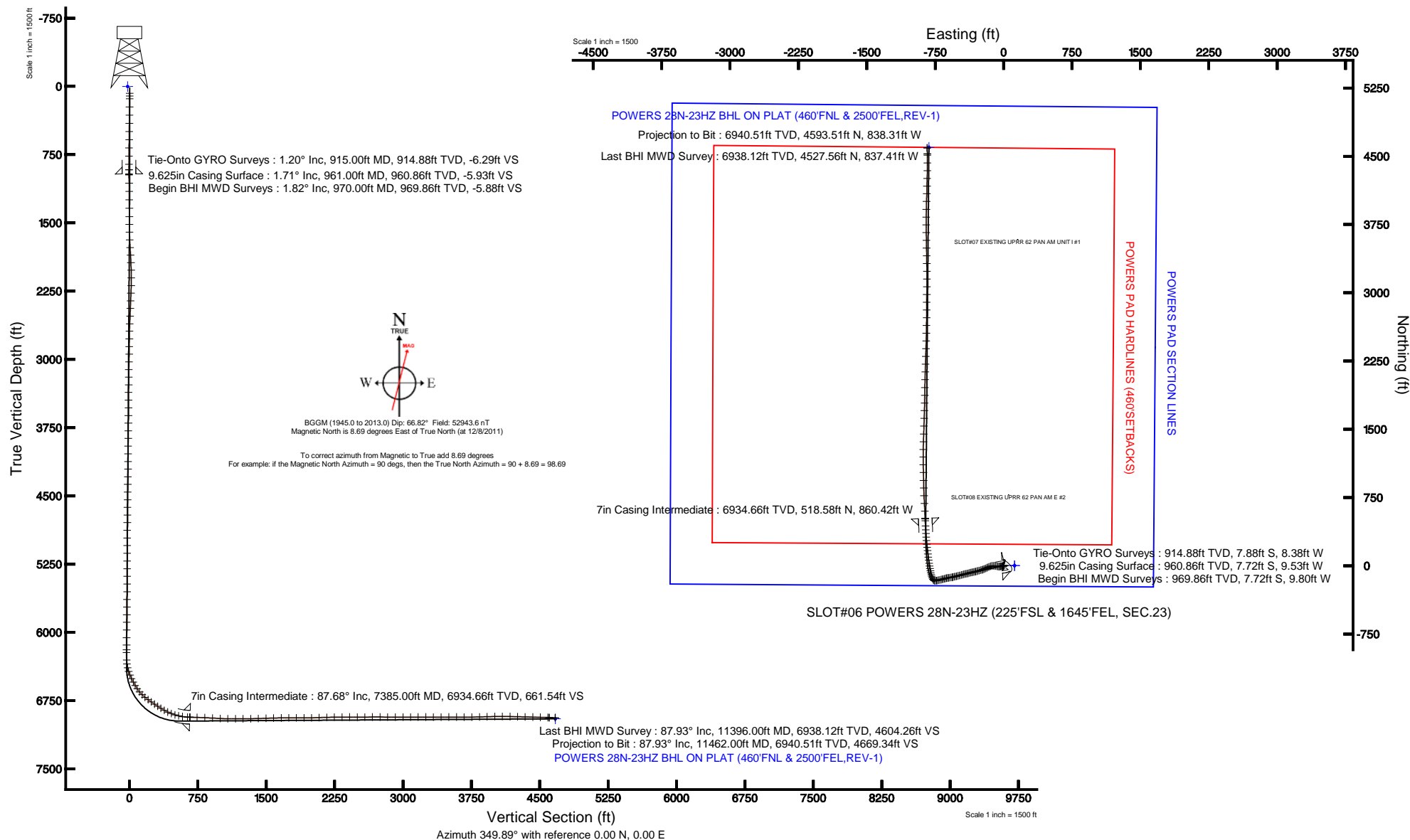


ANADARKO E&P COMPANY LP

Location: COLORADO Slot: SLOT#06 POWERS 28N-23HZ (225°FSL & 1645°FEL, SEC.23)
Field: WELD COUNTY (KERR MCGEE) Well: POWERS 28N-23HZ
Facility: SEC.23-T2N-R65W Wellbore: POWERS 28N-23HZ PWB



Plot reference wellpath is POWERS 28N-23HZ (REV-A.0) PWP	
True vertical depths are referenced to XTREME 6 (RKB)	Grid System: NAD83 / Lambert Colorado SP, Northern Zone (501), US feet
Measured depths are referenced to XTREME 6 (RKB)	North Reference: True north
XTREME 6 (RKB) to Mean Sea Level: 4924 feet	Scale: True distance
Mean Sea Level to Mud line (At Slot: SLOT#06 POWERS 28N-23HZ (225°FSL & 1645°FEL, SEC.23)): 0 feet	Depths are in feet
Coordinates are in feet referenced to Slot	Created by: wilsje02 on 1/31/2012





Actual Wellpath Report

POWERS 28N-23HZ AWP

Page 1 of 5



REFERENCE WELLPATH IDENTIFICATION

Operator	ANADARKO E&P COMPANY LP	Slot	SLOT#06 POWERS 28N-23HZ (225'FSL & 1645'FEL, SEC.23)
Area	COLORADO	Well	POWERS 28N-23HZ
Field	WELD COUNTY (KERR MCGEE)	Wellbore	POWERS 28N-23HZ AWB
Facility	SEC.23-T2N-R65W		

REPORT SETUP INFORMATION

Projection System	NAD83 / Lambert Colorado SP, Northern Zone (501), US feet	Software System	WellArchitect@ 3.0.2
North Reference	True	User	Wilsjef02
Scale	0.99996	Report Generated	1/31/2012 at 11:53:11 AM
Convergence at slot	0.56° East	Database/Source file	WA_ANADARKO/POWERS_28N-23HZ__AWB.xml

WELLPATH LOCATION

	Local coordinates		Grid coordinates		Geographic coordinates	
	North[ft]	East[ft]	Easting[US ft]	Northing[US ft]	Latitude	Longitude
Slot Location	0.61	-120.03	3243972.01	1286819.52	40°07'02.705"N	104°37'39.479"W
Facility Reference Pt			3244092.03	1286820.09	40°07'02.699"N	104°37'37.934"W
Field Reference Pt			3197771.84	1268891.29	40°04'09.600"N	104°47'36.000"W

WELLPATH DATUM

Calculation method	Minimum curvature	XTREME 6 (RKB) to Facility Vertical Datum	4924.00ft
Horizontal Reference Pt	Slot	XTREME 6 (RKB) to Mean Sea Level	4924.00ft
Vertical Reference Pt	XTREME 6 (RKB)	XTREME 6 (RKB) to Mud Line at Slot (SLOT#06 POWERS 28N-23HZ (225'FSL & 1645'FEL, SEC.23))	4924.00ft
MD Reference Pt	XTREME 6 (RKB)	Section Origin	N 0.00, E 0.00 ft
Field Vertical Reference	Mean Sea Level	Section Azimuth	349.89°



Actual Wellpath Report

POWERS 28N-23HZ AWP

Page 2 of 5



REFERENCE WELLPATH IDENTIFICATION			
Operator	ANADARKO E&P COMPANY LP	Slot	SLOT#06 POWERS 28N-23HZ (225'FSL & 1645'FEL, SEC.23)
Area	COLORADO	Well	POWERS 28N-23HZ
Field	WELD COUNTY (KERR MCGEE)	Wellbore	POWERS 28N-23HZ AWB
Facility	SEC.23-T2N-R65W		

WELLPATH DATA (140 stations)										
MD [ft]	Inclination [°]	Azimuth [°]	TVD [ft]	Vert Sect [ft]	North [ft]	East [ft]	Latitude	Longitude	DLS [°/100ft]	Comments
915.00	1.200	288.300	914.88	-6.29	-7.88	-8.38	40°07'02.627"N	104°37'39.587"W	1.00	Tie-onto GYRO Surveys
970.00	1.820	268.990	969.86	-5.88	-7.72	-9.80	40°07'02.629"N	104°37'39.605"W	1.44	Begin BHI MWD Surveys
1062.00	1.420	279.230	1061.82	-5.27	-7.56	-12.39	40°07'02.630"N	104°37'39.638"W	0.54	
1154.00	2.520	265.820	1153.77	-4.68	-7.53	-15.53	40°07'02.631"N	104°37'39.679"W	1.29	
1247.00	3.080	271.670	1246.66	-3.96	-7.60	-20.07	40°07'02.630"N	104°37'39.737"W	0.68	
1339.00	4.720	266.060	1338.44	-3.05	-7.79	-26.31	40°07'02.628"N	104°37'39.818"W	1.83	
1431.00	4.780	257.050	1430.12	-2.83	-8.91	-33.83	40°07'02.617"N	104°37'39.914"W	0.81	
1518.00	6.110	261.780	1516.73	-2.86	-10.38	-41.94	40°07'02.602"N	104°37'40.019"W	1.61	
1603.00	6.810	271.300	1601.19	-1.72	-10.92	-51.46	40°07'02.597"N	104°37'40.141"W	1.50	
1688.00	8.380	277.670	1685.45	1.17	-9.98	-62.64	40°07'02.606"N	104°37'40.285"W	2.09	
1774.00	8.740	281.690	1770.49	5.51	-7.81	-75.24	40°07'02.628"N	104°37'40.448"W	0.81	
1859.00	9.380	278.850	1854.43	10.16	-5.44	-88.41	40°07'02.651"N	104°37'40.617"W	0.92	
1942.00	9.530	278.140	1936.30	14.51	-3.43	-101.90	40°07'02.671"N	104°37'40.791"W	0.23	
2026.00	9.550	270.370	2019.14	17.95	-2.40	-115.75	40°07'02.681"N	104°37'40.969"W	1.53	
2112.00	9.180	258.360	2104.00	19.07	-3.74	-129.60	40°07'02.668"N	104°37'41.147"W	2.31	
2197.00	9.490	249.620	2187.88	17.64	-7.54	-142.81	40°07'02.630"N	104°37'41.317"W	1.71	
2282.00	9.700	247.430	2271.69	14.84	-12.73	-156.00	40°07'02.579"N	104°37'41.487"W	0.50	
2367.00	9.390	246.310	2355.52	11.67	-18.27	-168.96	40°07'02.524"N	104°37'41.654"W	0.43	
2452.00	9.410	246.830	2439.38	8.47	-23.79	-181.70	40°07'02.470"N	104°37'41.818"W	0.10	
2538.00	9.250	244.090	2524.24	5.00	-29.57	-194.38	40°07'02.413"N	104°37'41.981"W	0.55	
2623.00	8.430	246.110	2608.23	1.66	-35.08	-206.22	40°07'02.358"N	104°37'42.133"W	1.03	
2706.00	8.520	248.900	2690.32	-0.97	-39.76	-217.52	40°07'02.312"N	104°37'42.279"W	0.51	
2791.00	7.810	254.670	2774.46	-2.69	-43.55	-228.96	40°07'02.275"N	104°37'42.426"W	1.27	
2876.00	7.880	254.970	2858.67	-3.72	-46.59	-240.16	40°07'02.245"N	104°37'42.570"W	0.10	
2961.00	9.350	253.930	2942.70	-4.94	-50.01	-252.42	40°07'02.211"N	104°37'42.728"W	1.74	
3047.00	9.500	251.860	3027.54	-6.65	-54.16	-265.88	40°07'02.170"N	104°37'42.901"W	0.43	
3132.00	8.870	254.120	3111.45	-8.29	-58.13	-278.85	40°07'02.130"N	104°37'43.068"W	0.85	
3217.00	8.780	256.240	3195.45	-9.36	-61.47	-291.45	40°07'02.098"N	104°37'43.230"W	0.40	
3302.00	7.930	257.510	3279.54	-10.02	-64.28	-303.48	40°07'02.070"N	104°37'43.385"W	1.02	
3387.00	7.950	253.280	3363.73	-10.94	-67.24	-314.83	40°07'02.040"N	104°37'43.531"W	0.69	
3472.00	8.290	256.770	3447.88	-11.95	-70.33	-326.43	40°07'02.010"N	104°37'43.681"W	0.70	
3557.00	8.190	258.190	3532.00	-12.47	-72.98	-338.32	40°07'01.984"N	104°37'43.834"W	0.27	
3643.00	8.460	258.460	3617.10	-12.81	-75.50	-350.51	40°07'01.959"N	104°37'43.991"W	0.32	
3728.00	8.540	258.770	3701.16	-13.08	-77.98	-362.83	40°07'01.934"N	104°37'44.149"W	0.11	
3813.00	8.640	255.350	3785.21	-13.71	-80.82	-375.20	40°07'01.906"N	104°37'44.308"W	0.61	
3898.00	9.160	254.610	3869.18	-14.84	-84.23	-387.90	40°07'01.873"N	104°37'44.472"W	0.63	
3983.00	8.030	253.150	3953.23	-16.16	-87.75	-400.10	40°07'01.838"N	104°37'44.629"W	1.35	
4069.00	8.530	261.160	4038.34	-16.73	-90.47	-412.15	40°07'01.811"N	104°37'44.784"W	1.46	
4154.00	8.060	259.650	4122.45	-16.61	-92.51	-424.25	40°07'01.791"N	104°37'44.940"W	0.61	
4239.00	8.710	254.350	4206.54	-17.26	-95.31	-436.31	40°07'01.763"N	104°37'45.095"W	1.19	
4324.00	8.750	250.800	4290.55	-18.90	-99.18	-448.61	40°07'01.725"N	104°37'45.253"W	0.64	
4409.00	10.350	255.890	4374.37	-20.46	-103.16	-462.12	40°07'01.685"N	104°37'45.427"W	2.13	
4495.00	9.770	255.790	4459.05	-21.52	-106.84	-476.69	40°07'01.649"N	104°37'45.615"W	0.67	
4580.00	9.380	256.240	4542.87	-22.47	-110.26	-490.41	40°07'01.615"N	104°37'45.791"W	0.47	
4665.00	9.110	253.790	4626.76	-23.63	-113.78	-503.60	40°07'01.581"N	104°37'45.961"W	0.56	
4750.00	9.620	257.860	4710.63	-24.60	-117.15	-517.00	40°07'01.547"N	104°37'46.134"W	0.98	
4835.00	8.680	257.200	4794.55	-25.15	-120.07	-530.20	40°07'01.518"N	104°37'46.304"W	1.11	
4921.00	7.810	252.640	4879.66	-26.19	-123.25	-542.10	40°07'01.487"N	104°37'46.457"W	1.26	
5006.00	8.180	257.620	4963.84	-27.16	-126.27	-553.52	40°07'01.457"N	104°37'46.604"W	0.92	
5091.00	8.260	259.600	5047.96	-27.43	-128.67	-565.44	40°07'01.433"N	104°37'46.757"W	0.35	
5176.00	8.250	259.790	5132.08	-27.47	-130.85	-577.44	40°07'01.412"N	104°37'46.912"W	0.03	
5261.00	10.080	261.900	5215.99	-27.22	-132.98	-590.81	40°07'01.391"N	104°37'47.084"W	2.19	
5347.00	7.920	263.190	5300.93	-26.62	-134.74	-604.15	40°07'01.373"N	104°37'47.255"W	2.52	
5432.00	7.230	262.050	5385.19	-26.08	-136.18	-615.26	40°07'01.359"N	104°37'47.398"W	0.83	
5517.00	7.850	257.670	5469.45	-26.11	-138.16	-626.23	40°07'01.340"N	104°37'47.540"W	0.99	
5602.00	7.810	251.730	5553.66	-27.15	-141.21	-637.38	40°07'01.309"N	104°37'47.683"W	0.95	
5688.00	8.710	254.590	5638.77	-28.58	-144.77	-649.21	40°07'01.274"N	104°37'47.835"W	1.15	
5773.00	8.070	256.750	5722.86	-29.50	-147.85	-661.22	40°07'01.244"N	104°37'47.990"W	0.84	
5858.00	8.260	257.250	5807.00	-30.11	-150.56	-672.98	40°07'01.217"N	104°37'48.141"W	0.24	
5943.00	8.780	255.410	5891.06	-30.90	-153.54	-685.22	40°07'01.188"N	104°37'48.299"W	0.69	



Actual Wellpath Report

POWERS 28N-23HZ AWP

Page 3 of 5



REFERENCE WELLPATH IDENTIFICATION

Operator	ANADARKO E&P COMPANY LP	Slot	SLOT#06 POWERS 28N-23HZ (225'FSL & 1645'FEL, SEC.23)
Area	COLORADO	Well	POWERS 28N-23HZ
Field	WELD COUNTY (KERR MCGEE)	Wellbore	POWERS 28N-23HZ AWB
Facility	SEC.23-T2N-R65W		

WELLPATH DATA (140 stations) † = interpolated/extrapolated station

MD [ft]	Inclination [°]	Azimuth [°]	TVD [ft]	Vert Sect [ft]	North [ft]	East [ft]	Latitude	Longitude	DLS [°/100ft]	Comments
6028.00	9.360	253.250	5975.00	-32.21	-157.17	-698.11	40°07'01.152"N	104°37'48.465"W	0.79	
6114.00	9.640	259.160	6059.82	-33.11	-160.54	-711.88	40°07'01.118"N	104°37'48.642"W	1.18	
6197.00	9.630	261.200	6141.65	-33.04	-162.91	-725.57	40°07'01.095"N	104°37'48.818"W	0.41	
6250.00	9.410	258.070	6193.92	-33.07	-164.48	-734.19	40°07'01.079"N	104°37'48.929"W	1.06	
6279.00	9.660	255.480	6222.52	-33.34	-165.58	-738.86	40°07'01.069"N	104°37'48.989"W	1.71	
6364.00	10.000	271.480	6306.29	-32.40	-167.18	-753.15	40°07'01.053"N	104°37'49.173"W	3.23	
6407.00	12.530	296.820	6348.48	-28.85	-164.98	-761.05	40°07'01.075"N	104°37'49.275"W	12.78	
6450.00	15.250	314.670	6390.24	-21.42	-158.89	-769.24	40°07'01.135"N	104°37'49.380"W	11.73	
6492.00	18.990	329.600	6430.39	-10.49	-149.11	-776.63	40°07'01.231"N	104°37'49.475"W	13.67	
6535.00	23.080	335.990	6470.52	4.26	-135.37	-783.60	40°07'01.367"N	104°37'49.565"W	10.89	
6578.00	25.650	342.960	6509.69	21.69	-118.76	-789.76	40°07'01.531"N	104°37'49.645"W	8.96	
6620.00	27.380	345.640	6547.28	40.35	-100.72	-794.82	40°07'01.710"N	104°37'49.710"W	5.01	
6663.00	30.710	349.660	6584.87	61.19	-80.33	-799.25	40°07'01.911"N	104°37'49.767"W	8.97	
6705.00	33.860	350.300	6620.37	83.62	-58.24	-803.14	40°07'02.129"N	104°37'49.817"W	7.54	
6748.00	39.210	349.580	6654.91	109.21	-33.04	-807.62	40°07'02.378"N	104°37'49.874"W	12.48	
6791.00	44.310	350.320	6686.97	137.84	-4.85	-812.61	40°07'02.657"N	104°37'49.939"W	11.92	
6833.00	49.710	351.180	6715.60	168.55	25.46	-817.54	40°07'02.956"N	104°37'50.002"W	12.94	
6876.00	54.900	353.450	6741.89	202.53	59.17	-822.06	40°07'03.290"N	104°37'50.060"W	12.77	
6918.00	55.620	353.310	6765.82	236.98	93.45	-826.04	40°07'03.628"N	104°37'50.112"W	1.74	
6961.00	55.900	353.120	6790.02	272.46	128.75	-830.24	40°07'03.977"N	104°37'50.166"W	0.75	
7004.00	56.590	352.980	6813.91	308.16	164.24	-834.57	40°07'04.328"N	104°37'50.221"W	1.63	
7046.00	57.960	353.540	6836.61	343.43	199.32	-838.71	40°07'04.675"N	104°37'50.275"W	3.45	
7089.00	61.420	354.360	6858.31	380.45	236.23	-842.62	40°07'05.039"N	104°37'50.325"W	8.21	
7132.00	65.050	354.430	6877.67	418.72	274.44	-846.37	40°07'05.417"N	104°37'50.373"W	8.44	
7174.00	68.530	355.770	6894.22	457.16	312.89	-849.66	40°07'05.797"N	104°37'50.416"W	8.79	
7217.00	73.280	356.220	6908.29	497.55	353.41	-852.49	40°07'06.197"N	104°37'50.452"W	11.09	
7259.00	76.210	357.690	6919.34	537.75	393.87	-854.64	40°07'06.597"N	104°37'50.480"W	7.75	
7302.00	81.720	357.230	6927.56	579.58	436.02	-856.51	40°07'07.014"N	104°37'50.504"W	12.86	
7359.00	86.550	357.340	6933.39	635.79	492.64	-859.20	40°07'07.573"N	104°37'50.539"W	8.48	
7380.00	87.620	357.270	6934.45	656.59	513.59	-860.18	40°07'07.780"N	104°37'50.551"W	5.11	
7385.00†	87.680	357.245	6934.66	661.54	518.58	-860.42	40°07'07.830"N	104°37'50.554"W	1.30	7" Casing Point
7465.00	88.640	356.840	6937.23	740.88	598.43	-864.55	40°07'08.619"N	104°37'50.608"W	1.30	
7551.00	87.810	357.040	6939.89	826.18	684.26	-869.14	40°07'09.467"N	104°37'50.667"W	0.99	
7636.00	86.800	357.800	6943.89	910.36	769.08	-872.96	40°07'10.305"N	104°37'50.716"W	1.49	
7721.00	86.920	358.580	6948.54	994.34	853.91	-875.64	40°07'11.143"N	104°37'50.750"W	0.93	
7804.00	88.980	358.580	6951.51	1076.33	936.83	-877.70	40°07'11.963"N	104°37'50.777"W	2.48	
7890.00	90.360	358.650	6952.01	1161.33	1022.80	-879.78	40°07'12.812"N	104°37'50.804"W	1.61	
7975.00	90.650	359.510	6951.26	1245.24	1107.79	-881.14	40°07'13.652"N	104°37'50.821"W	1.07	
8060.00	90.520	0.310	6950.39	1328.94	1192.78	-881.27	40°07'14.492"N	104°37'50.823"W	0.95	
8145.00	91.690	0.070	6948.75	1412.55	1277.76	-880.99	40°07'15.332"N	104°37'50.819"W	1.41	
8230.00	91.840	1.600	6946.13	1495.96	1362.71	-879.75	40°07'16.171"N	104°37'50.804"W	1.81	
8315.00	91.510	2.250	6943.65	1579.06	1447.63	-876.90	40°07'17.010"N	104°37'50.767"W	0.86	
8401.00	90.460	2.170	6942.17	1663.07	1533.55	-873.58	40°07'17.860"N	104°37'50.724"W	1.22	
8486.00	90.580	1.650	6941.40	1746.20	1618.50	-870.75	40°07'18.699"N	104°37'50.688"W	0.63	
8571.00	89.660	1.300	6941.22	1829.47	1703.47	-868.56	40°07'19.539"N	104°37'50.660"W	1.16	
8656.00	89.720	1.080	6941.68	1912.82	1788.45	-866.80	40°07'20.379"N	104°37'50.637"W	0.27	
8741.00	91.410	1.380	6940.84	1996.15	1873.42	-864.97	40°07'21.218"N	104°37'50.614"W	2.02	
8826.00	91.910	0.820	6938.38	2079.49	1958.37	-863.34	40°07'22.058"N	104°37'50.593"W	0.88	
8912.00	91.750	1.170	6935.63	2163.84	2044.31	-861.85	40°07'22.907"N	104°37'50.573"W	0.45	
8997.00	90.830	1.550	6933.72	2247.12	2129.27	-859.83	40°07'23.747"N	104°37'50.547"W	1.17	
9082.00	90.360	2.030	6932.84	2330.29	2214.22	-857.18	40°07'24.586"N	104°37'50.513"W	0.79	
9167.00	89.690	1.710	6932.80	2413.44	2299.17	-854.40	40°07'25.426"N	104°37'50.478"W	0.87	
9253.00	89.930	1.530	6933.09	2497.64	2385.14	-851.97	40°07'26.275"N	104°37'50.446"W	0.35	
9338.00	90.150	1.560	6933.03	2580.89	2470.11	-849.68	40°07'27.115"N	104°37'50.417"W	0.26	
9423.00	90.610	1.270	6932.46	2664.18	2555.08	-847.58	40°07'27.954"N	104°37'50.390"W	0.64	
9508.00	89.530	0.940	6932.36	2747.55	2640.06	-845.94	40°07'28.794"N	104°37'50.369"W	1.33	
9593.00	89.500	0.450	6933.08	2831.04	2725.05	-844.91	40°07'29.634"N	104°37'50.356"W	0.58	
9678.00	89.750	359.860	6933.63	2914.68	2810.05	-844.68	40°07'30.474"N	104°37'50.353"W	0.75	
9764.00	90.270	1.000	6933.62	2999.23	2896.05	-844.04	40°07'31.324"N	104°37'50.344"W	1.46	
9849.00	90.460	0.670	6933.08	3082.68	2981.03	-842.80	40°07'32.164"N	104°37'50.329"W	0.45	



Actual Wellpath Report

POWERS 28N-23HZ AWP

Page 4 of 5



REFERENCE WELLPATH IDENTIFICATION			
Operator	ANADARKO E&P COMPANY LP	Slot	SLOT#06 POWERS 28N-23HZ (225'FSL & 1645'FEL, SEC.23)
Area	COLORADO	Well	POWERS 28N-23HZ
Field	WELD COUNTY (KERR MCGEE)	Wellbore	POWERS 28N-23HZ AWB
Facility	SEC.23-T2N-R65W		

WELLPATH DATA (140 stations)

MD [ft]	Inclination [°]	Azimuth [°]	TVD [ft]	Vert Sect [ft]	North [ft]	East [ft]	Latitude	Longitude	DLS [°/100ft]	Comments
9934.00	90.210	0.180	6932.58	3166.25	3066.03	-842.17	40°07'33.004"N	104°37'50.320"W	0.65	
10019.00	89.840	0.010	6932.54	3249.90	3151.03	-842.03	40°07'33.844"N	104°37'50.319"W	0.48	
10104.00	89.410	359.660	6933.10	3333.62	3236.03	-842.27	40°07'34.684"N	104°37'50.322"W	0.65	
10189.00	90.300	359.320	6933.32	3417.43	3321.02	-843.03	40°07'35.524"N	104°37'50.332"W	1.12	
10275.00	90.430	359.090	6932.77	3502.30	3407.01	-844.22	40°07'36.373"N	104°37'50.347"W	0.31	
10360.00	89.810	358.960	6932.59	3586.22	3492.00	-845.67	40°07'37.213"N	104°37'50.366"W	0.75	
10445.00	89.530	358.920	6933.08	3670.16	3576.98	-847.24	40°07'38.053"N	104°37'50.386"W	0.33	
10530.00	90.800	359.190	6932.83	3754.07	3661.97	-848.64	40°07'38.893"N	104°37'50.404"W	1.53	
10616.00	91.420	359.820	6931.17	3838.85	3747.95	-849.38	40°07'39.743"N	104°37'50.414"W	1.03	
10701.00	91.600	0.670	6928.93	3922.43	3832.92	-849.02	40°07'40.582"N	104°37'50.409"W	1.02	
10786.00	91.380	0.960	6926.72	4005.87	3917.88	-847.81	40°07'41.422"N	104°37'50.394"W	0.43	
10872.00	89.630	2.250	6925.96	4090.07	4003.84	-845.40	40°07'42.271"N	104°37'50.363"W	2.53	
10957.00	88.420	1.440	6927.41	4173.21	4088.78	-842.67	40°07'43.111"N	104°37'50.327"W	1.71	
11042.00	89.160	1.460	6929.20	4256.47	4173.73	-840.52	40°07'43.950"N	104°37'50.300"W	0.87	
11127.00	88.980	1.470	6930.58	4339.73	4258.69	-838.34	40°07'44.790"N	104°37'50.272"W	0.21	
11212.00	88.390	0.750	6932.53	4423.08	4343.66	-836.70	40°07'45.629"N	104°37'50.251"W	1.09	
11296.00	88.270	359.770	6934.98	4505.67	4427.62	-836.32	40°07'46.459"N	104°37'50.246"W	1.17	
11381.00	88.180	359.060	6937.61	4589.46	4512.57	-837.18	40°07'47.299"N	104°37'50.257"W	0.84	
11396.00	87.930	359.220	6938.12	4604.26	4527.56	-837.41	40°07'47.447"N	104°37'50.260"W	1.98	Last BHI MWD Survey
11462.00	87.930	359.220	6940.51	4669.34	4593.51	-838.31	40°07'48.098"N	104°37'50.271"W	0.00	Projection to Bit

HOLE & CASING SECTIONS - Ref Wellbore: POWERS 28N-23HZ AWB Ref Wellpath: POWERS 28N-23HZ AWP

String/Diameter	Start MD [ft]	End MD [ft]	Interval [ft]	Start TVD [ft]	End TVD [ft]	Start N/S [ft]	Start E/W [ft]	End N/S [ft]	End E/W [ft]
13.5in Open Hole	75.00	961.00	886.00	75.00	960.86	0.09	0.09	-7.72	-9.53
9.625in Casing Surface	75.00	961.00	886.00	75.00	960.86	0.09	0.09	-7.72	-9.53
8.75in Open Hole	961.00	7412.00	6451.00	960.86	6935.68	-7.72	-9.53	545.53	-861.75
7in Casing Intermediate	75.00	7385.00	7310.00	75.00	6934.66	0.09	0.09	518.58	-860.42
6.125in Open Hole	7385.00	11462.00	4077.00	6934.66	6940.51	518.58	-860.42	4593.51	-838.31

TARGETS

Name	MD [ft]	TVD [ft]	North [ft]	East [ft]	Grid East [US ft]	Grid North [US ft]	Latitude	Longitude	Shape
POWERS PAD SECTION LINES		0.00	-0.71	120.03	3244092.03	1286819.99	40°07'02.698"N	104°37'37.934"W	polygon
POWERS 28N-23HZ BHL ON PLAT (460'FNL & 2500'FEL,REV-1)		6952.00	4598.83	-819.86	3243106.98	1291409.86	40°07'48.151"N	104°37'50.034"W	point
POWERS PAD HARDLINES (460'SETBACKS)		7172.00	-0.71	120.03	3244092.03	1286819.99	40°07'02.698"N	104°37'37.934"W	polygon

WELLPATH COMPOSITION - Ref Wellbore: POWERS 28N-23HZ AWB Ref Wellpath: POWERS 28N-23HZ AWP

Start MD [ft]	End MD [ft]	Positional Uncertainty Model	Log Name/Comment	Wellbore
75.00	915.00	Gyrodata standard - Drop gyro or Multi-shot	GYRO SURVEYS <105-915>	POWERS 28N-23HZ AWB
915.00	7380.00	NaviTrak (Standard)	BHI MWD SURVEYS 8 3/4" HOLE <970-7380>	POWERS 28N-23HZ AWB
7380.00	11396.00	NaviTrak (Standard)	BHI MWD SURVEYS 6 1/8" HOLE <7465-11396>	POWERS 28N-23HZ AWB
11396.00	11462.00	Blind Drilling (std)	Projection to bit	POWERS 28N-23HZ AWB



Actual Wellpath Report

POWERS 28N-23HZ AWP

Page 5 of 5



REFERENCE WELLPATH IDENTIFICATION

Operator	ANADARKO E&P COMPANY LP	Slot	SLOT#06 POWERS 28N-23HZ (225'FSL & 1645'FEL, SEC.23)
Area	COLORADO	Well	POWERS 28N-23HZ
Field	WELD COUNTY (KERR MCGEE)	Wellbore	POWERS 28N-23HZ AWB
Facility	SEC.23-T2N-R65W		

WELLPATH COMMENTS

MD [ft]	Inclination [°]	Azimuth [°]	TVD [ft]	Comment
915.00	1.200	288.300	914.88	Tie-Onto GYRO Surveys
970.00	1.820	268.990	969.86	Begin BHI MWD Surveys
7385.00	87.680	357.245	6934.66	7" Casing Point
11396.00	87.930	359.220	6938.12	Last BHI MWD Survey
11462.00	87.930	359.220	6940.51	Projection to Bit