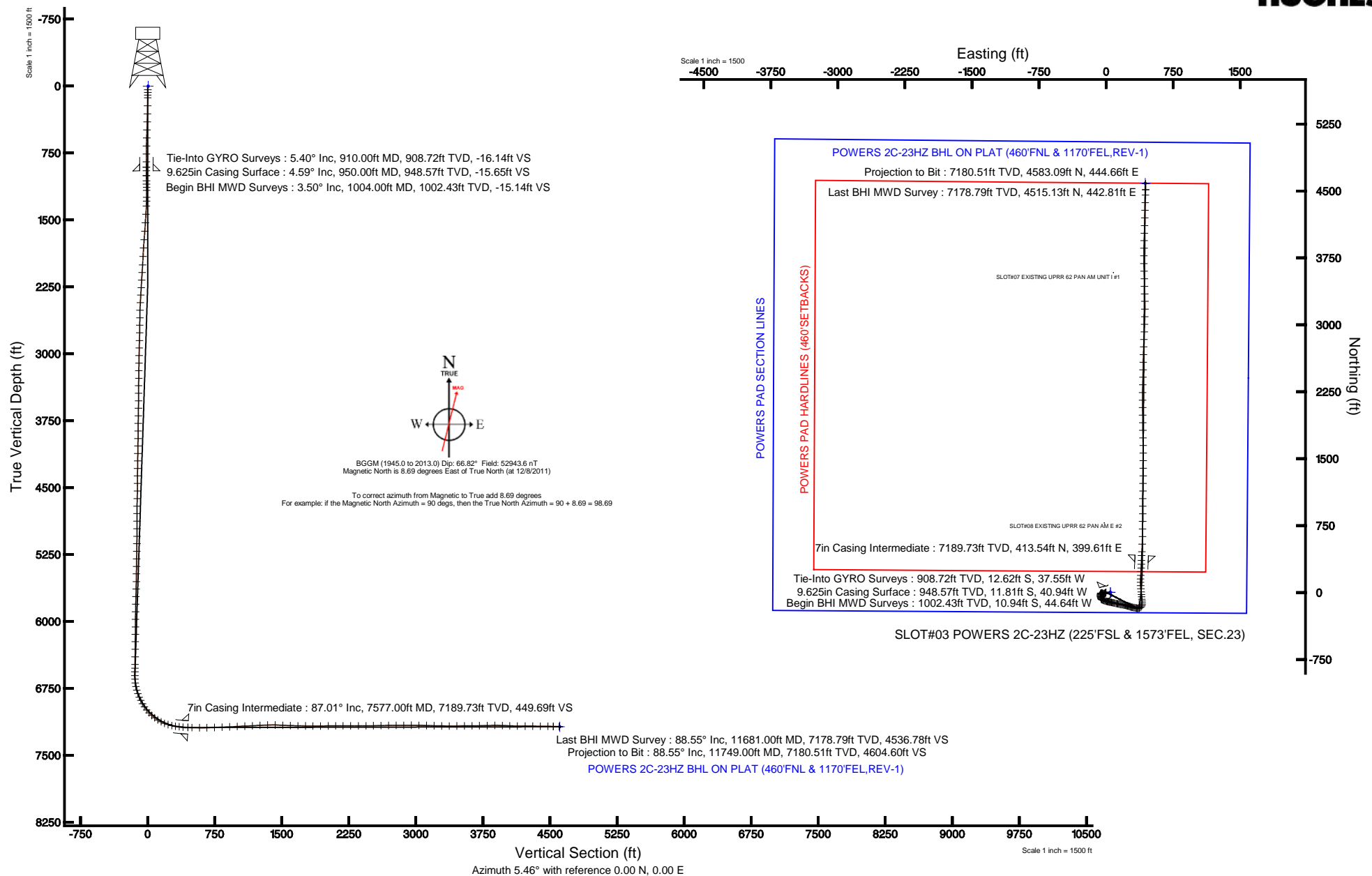


Location:	COLORADO	Slot:	SLOT#03 POWERS 2C-23HZ (225'FSL & 1573'FEL, SEC.23)
Field:	WELD COUNTY (KERR MCGEE)	Well:	POWERS 2C-23HZ
Facility:	SEC.23-T2N-R65W	Wellbore:	POWERS 2C-23HZ PWB

Plot reference wellpath is POWERS 2C-23HZ (REV-A.0) PWP	
True vertical depths are referenced to XTREME 6 (RKB)	Grid System: NAD83 / Lambert Colorado SP, Northern Zone (501), US feet
Measured depths are referenced to XTREME 6 (RKB)	North Reference: True north
XTREME 6 (RKB) to Mean Sea Level: 4924 feet	Scale: True distance
Mean Sea Level to Mud line (At Slot: SLOT#03 POWERS 2C-23HZ (225'FSL & 1573'FEL, SEC.23)): 0 feet	Depths are in feet
Coordinates are in feet referenced to Slot	Created by: wiljaef02 on 1/31/2012





# Actual Wellpath Report

POWERS 2C-23HZ AWP

Page 1 of 5



## REFERENCE WELLPATH IDENTIFICATION

Operator	ANADARKO E&P COMPANY LP	Slot	SLOT#03 POWERS 2C-23HZ (225'FSL & 1573'FEL, SEC.23)
Area	COLORADO	Well	POWERS 2C-23HZ
Field	WELD COUNTY (KERR MCGEE)	Wellbore	POWERS 2C-23HZ AWB
Facility	SEC.23-T2N-R65W		

## REPORT SETUP INFORMATION

Projection System	NAD83 / Lambert Colorado SP, Northern Zone (501), US feet	Software System	WellArchitect® 3.0.2
North Reference	True	User	Wilsjef02
Scale	0.99996	Report Generated	1/31/2012 at 9:51:06 AM
Convergence at slot	0.56° East	Database/Source file	WA_ANADARKO/POWERS_2C-23HZ_AWB.xml

## WELLPATH LOCATION

	Local coordinates		Grid coordinates		Geographic coordinates	
	North[ft]	East[ft]	Easting[US ft]	Northing[US ft]	Latitude	Longitude
Slot Location	0.20	-48.17	3244043.87	1286819.82	40°07'02.701"N	104°37'38.554"W
Facility Reference Pt			3244092.03	1286820.09	40°07'02.699"N	104°37'37.934"W
Field Reference Pt			3197771.84	1268891.29	40°04'09.600"N	104°47'36.000"W

## WELLPATH DATUM

Calculation method	Minimum curvature	XTREME 6 (RKB) to Facility Vertical Datum	4924.00ft
Horizontal Reference Pt	Slot	XTREME 6 (RKB) to Mean Sea Level	4924.00ft
Vertical Reference Pt	XTREME 6 (RKB)	XTREME 6 (RKB) to Mud Line at Slot (SLOT#03 POWERS 2C-23HZ (225'FSL & 1573'FEL, SEC.23))	4924.00ft
MD Reference Pt	XTREME 6 (RKB)	Section Origin	N 0.00, E 0.00 ft
Field Vertical Reference	Mean Sea Level	Section Azimuth	5.46°



# Actual Wellpath Report

POWERS 2C-23HZ AWP

Page 2 of 5



## REFERENCE WELLPATH IDENTIFICATION

Operator	ANADARKO E&P COMPANY LP	Slot	SLOT#03 POWERS 2C-23HZ (225'FSL & 1573'FEL, SEC.23)
Area	COLORADO	Well	POWERS 2C-23HZ
Field	WELD COUNTY (KERR MCGEE)	Wellbore	POWERS 2C-23HZ AWB
Facility	SEC.23-T2N-R65W		

## WELLPATH DATA (143 stations)

MD [ft]	Inclination [°]	Azimuth [°]	TVD [ft]	Vert Sect [ft]	North [ft]	East [ft]	Latitude	Longitude	DLS [°/100ft]	Comments
910.00	5.400	283.600	908.72	-16.14	-12.62	-37.55	40°07'02.576"N	104°37'39.037"W	0.73	Tie-Into GYRO Surveys
1004.00	3.500	283.000	1002.43	-15.14	-10.94	-44.64	40°07'02.593"N	104°37'39.129"W	2.02	Begin BHI MWD Surveys
1062.00	2.000	285.000	1060.36	-14.74	-10.28	-47.35	40°07'02.599"N	104°37'39.163"W	2.59	
1100.00	2.400	294.000	1098.34	-14.37	-9.78	-48.72	40°07'02.604"N	104°37'39.181"W	1.39	
1135.00	2.800	283.000	1133.30	-14.03	-9.29	-50.22	40°07'02.609"N	104°37'39.200"W	1.82	
1170.00	3.300	293.000	1168.25	-13.61	-8.71	-51.98	40°07'02.615"N	104°37'39.223"W	2.08	
1249.00	2.200	254.340	1247.16	-13.47	-8.23	-55.53	40°07'02.620"N	104°37'39.269"W	2.65	
1290.00	2.200	239.000	1288.13	-14.22	-8.85	-56.96	40°07'02.614"N	104°37'39.287"W	1.43	
1345.00	2.690	204.900	1343.09	-16.07	-10.56	-58.41	40°07'02.597"N	104°37'39.306"W	2.74	
1439.00	3.600	191.250	1436.95	-21.09	-15.46	-59.92	40°07'02.548"N	104°37'39.325"W	1.25	
1534.00	3.960	189.370	1531.74	-27.33	-21.62	-61.03	40°07'02.487"N	104°37'39.340"W	0.40	
1629.00	4.450	188.900	1626.48	-34.28	-28.49	-62.14	40°07'02.419"N	104°37'39.354"W	0.52	
1723.00	4.140	177.580	1720.22	-41.28	-35.49	-62.56	40°07'02.350"N	104°37'39.359"W	0.96	
1818.00	3.420	173.610	1815.01	-47.45	-41.73	-62.10	40°07'02.289"N	104°37'39.353"W	0.81	
1912.00	3.200	174.950	1908.86	-52.77	-47.13	-61.55	40°07'02.235"N	104°37'39.346"W	0.25	
2007.00	3.520	161.640	2003.69	-58.05	-52.54	-60.40	40°07'02.182"N	104°37'39.331"W	0.88	
2092.00	3.710	165.330	2088.53	-63.02	-57.68	-58.88	40°07'02.131"N	104°37'39.312"W	0.35	
2177.00	4.260	156.330	2173.32	-68.36	-63.23	-56.92	40°07'02.076"N	104°37'39.287"W	0.98	
2263.00	3.730	166.890	2259.11	-73.80	-68.88	-55.00	40°07'02.020"N	104°37'39.262"W	1.05	
2346.00	4.070	156.840	2341.92	-78.94	-74.22	-53.23	40°07'01.968"N	104°37'39.239"W	0.92	
2431.00	4.350	137.610	2426.70	-83.75	-79.37	-49.87	40°07'01.917"N	104°37'39.196"W	1.68	
2516.00	4.480	118.760	2511.45	-87.23	-83.35	-44.79	40°07'01.877"N	104°37'39.131"W	1.71	
2601.00	3.740	106.900	2596.23	-89.09	-85.75	-39.23	40°07'01.854"N	104°37'39.059"W	1.32	
2686.00	3.920	102.830	2681.04	-90.02	-87.20	-33.74	40°07'01.839"N	104°37'38.988"W	0.38	
2771.00	4.500	116.120	2765.81	-91.57	-89.32	-27.91	40°07'01.818"N	104°37'38.913"W	1.33	
2857.00	5.410	109.580	2851.49	-93.75	-92.16	-21.06	40°07'01.790"N	104°37'38.825"W	1.24	
2942.00	6.150	105.190	2936.06	-95.49	-94.70	-12.89	40°07'01.765"N	104°37'38.720"W	1.01	
3027.00	6.080	108.000	3020.58	-97.24	-97.28	-4.22	40°07'01.740"N	104°37'38.608"W	0.36	
3112.00	6.250	105.960	3105.08	-99.06	-99.94	4.51	40°07'01.713"N	104°37'38.496"W	0.33	
3198.00	6.370	103.530	3190.56	-100.58	-102.35	13.65	40°07'01.690"N	104°37'38.378"W	0.34	
3283.00	5.720	102.440	3275.09	-101.76	-104.36	22.37	40°07'01.670"N	104°37'38.266"W	0.78	
3366.00	5.490	103.890	3357.69	-102.85	-106.21	30.26	40°07'01.651"N	104°37'38.164"W	0.33	
3451.00	4.830	100.280	3442.35	-103.74	-107.82	37.73	40°07'01.636"N	104°37'38.068"W	0.86	
3536.00	5.280	98.270	3527.02	-104.23	-109.02	45.12	40°07'01.624"N	104°37'37.973"W	0.57	
3621.00	5.900	98.320	3611.61	-104.64	-110.22	53.32	40°07'01.612"N	104°37'37.868"W	0.73	
3706.00	5.960	106.620	3696.16	-105.72	-112.11	61.87	40°07'01.593"N	104°37'37.758"W	1.01	
3792.00	5.270	107.220	3781.75	-107.39	-114.56	69.92	40°07'01.569"N	104°37'37.654"W	0.81	
3877.00	5.880	102.920	3866.34	-108.75	-116.69	77.89	40°07'01.548"N	104°37'37.551"W	0.87	
3962.00	5.960	97.270	3950.89	-109.45	-118.22	86.51	40°07'01.533"N	104°37'37.440"W	0.69	
4045.00	6.200	104.390	4033.43	-110.28	-119.88	95.13	40°07'01.516"N	104°37'37.330"W	0.95	
4130.00	6.520	105.520	4117.90	-111.84	-122.31	104.22	40°07'01.492"N	104°37'37.212"W	0.40	
4215.00	6.860	104.210	4202.32	-113.45	-124.85	113.80	40°07'01.467"N	104°37'37.089"W	0.44	
4300.00	5.820	99.260	4286.80	-114.51	-126.79	122.97	40°07'01.448"N	104°37'36.971"W	1.38	
4383.00	6.050	96.030	4369.36	-114.84	-127.92	131.47	40°07'01.437"N	104°37'36.862"W	0.49	
4468.00	6.260	99.310	4453.87	-115.19	-129.14	140.50	40°07'01.425"N	104°37'36.746"W	0.48	
4554.00	5.870	107.350	4539.39	-116.41	-131.21	149.33	40°07'01.404"N	104°37'36.632"W	1.09	
4639.00	6.010	110.350	4623.93	-118.45	-134.06	157.65	40°07'01.376"N	104°37'36.525"W	0.40	
4724.00	5.920	98.550	4708.48	-119.83	-136.26	166.15	40°07'01.354"N	104°37'36.415"W	1.44	
4809.00	5.690	91.770	4793.04	-119.80	-137.04	174.70	40°07'01.347"N	104°37'36.305"W	0.85	
4893.00	5.300	100.710	4876.66	-119.88	-137.89	182.67	40°07'01.338"N	104°37'36.203"W	1.12	
4978.00	5.170	102.260	4961.30	-120.70	-139.43	190.27	40°07'01.323"N	104°37'36.105"W	0.23	
5063.00	6.220	100.060	5045.88	-121.52	-141.05	198.55	40°07'01.307"N	104°37'35.998"W	1.26	
5148.00	6.340	101.940	5130.37	-122.42	-142.82	207.68	40°07'01.290"N	104°37'35.881"W	0.28	
5233.00	6.410	103.100	5214.85	-123.58	-144.87	216.89	40°07'01.269"N	104°37'35.762"W	0.17	
5318.00	5.940	103.740	5299.35	-124.84	-146.99	225.78	40°07'01.248"N	104°37'35.648"W	0.56	
5403.00	5.210	105.810	5383.95	-126.17	-149.09	233.77	40°07'01.228"N	104°37'35.545"W	0.89	
5488.00	5.430	107.330	5468.58	-127.69	-151.34	241.32	40°07'01.205"N	104°37'35.448"W	0.31	
5574.00	6.110	103.660	5554.15	-129.18	-153.63	249.65	40°07'01.183"N	104°37'35.341"W	0.90	
5659.00	5.650	107.500	5638.70	-130.70	-155.96	258.04	40°07'01.160"N	104°37'35.233"W	0.71	
5744.00	5.170	111.800	5723.32	-132.65	-158.64	265.59	40°07'01.133"N	104°37'35.135"W	0.74	



# Actual Wellpath Report

POWERS 2C-23HZ AWP

Page 3 of 5



## REFERENCE WELLPATH IDENTIFICATION

Operator	ANADARKO E&P COMPANY LP	Slot	SLOT#03 POWERS 2C-23HZ (225'FSL & 1573'FEL, SEC.23)
Area	COLORADO	Well	POWERS 2C-23HZ
Field	WELD COUNTY (KERR MCGEE)	Wellbore	POWERS 2C-23HZ AWB
Facility	SEC.23-T2N-R65W		

## WELLPATH DATA (143 stations) † = interpolated/extrapolated station

MD [ft]	Inclination [°]	Azimuth [°]	TVD [ft]	Vert Sect [ft]	North [ft]	East [ft]	Latitude	Longitude	DLS [°/100ft]	Comments
5829.00	5.530	112.570	5807.95	-134.93	-161.63	272.92	40°07'01.104"N	104°37'35.041"W	0.43	
5914.00	5.220	106.540	5892.58	-136.88	-164.30	280.41	40°07'01.077"N	104°37'34.945"W	0.76	
5999.00	5.790	101.040	5977.19	-138.04	-166.22	288.33	40°07'01.058"N	104°37'34.843"W	0.91	
6085.00	5.990	100.340	6062.73	-138.84	-167.86	297.00	40°07'01.042"N	104°37'34.731"W	0.25	
6168.00	6.320	99.830	6145.25	-139.56	-169.42	305.76	40°07'01.027"N	104°37'34.618"W	0.40	
6252.00	5.820	98.220	6228.78	-140.12	-170.82	314.53	40°07'01.013"N	104°37'34.505"W	0.63	
6337.00	5.930	103.190	6313.34	-140.92	-172.43	323.07	40°07'00.997"N	104°37'34.396"W	0.61	
6422.00	6.580	102.880	6397.83	-142.14	-174.52	332.10	40°07'00.976"N	104°37'34.279"W	0.77	
6507.00	6.240	103.110	6482.30	-143.38	-176.66	341.34	40°07'00.955"N	104°37'34.160"W	0.40	
6550.00	5.720	104.800	6525.06	-144.04	-177.73	345.69	40°07'00.945"N	104°37'34.104"W	1.28	
6590.00	5.850	104.280	6564.86	-144.67	-178.74	349.59	40°07'00.935"N	104°37'34.054"W	0.35	
6633.00	8.630	90.980	6607.52	-144.76	-179.34	354.94	40°07'00.929"N	104°37'33.985"W	7.51	
6675.00	13.030	82.980	6648.76	-143.49	-178.82	362.80	40°07'00.934"N	104°37'33.884"W	11.05	
6718.00	16.580	71.390	6690.34	-139.94	-176.26	373.43	40°07'00.959"N	104°37'33.747"W	10.71	
6761.00	16.780	54.350	6731.55	-133.35	-170.68	384.29	40°07'01.014"N	104°37'33.608"W	11.35	
6803.00	18.880	36.730	6771.56	-123.55	-161.70	393.29	40°07'01.103"N	104°37'33.492"W	13.72	
6846.00	20.340	20.640	6812.10	-110.38	-149.12	400.09	40°07'01.227"N	104°37'33.404"W	12.97	
6887.00	22.780	6.790	6850.25	-95.55	-134.56	403.54	40°07'01.371"N	104°37'33.360"W	13.73	
6927.00	25.650	358.050	6886.74	-79.22	-118.21	404.17	40°07'01.533"N	104°37'33.352"W	11.46	
6969.00	29.920	354.800	6923.89	-59.90	-98.68	402.91	40°07'01.726"N	104°37'33.368"W	10.78	
7011.00	34.300	353.870	6959.46	-38.00	-76.47	400.69	40°07'01.945"N	104°37'33.396"W	10.49	
7054.00	38.640	354.300	6994.03	-12.95	-51.05	398.06	40°07'02.196"N	104°37'33.430"W	10.11	
7096.00	43.090	354.880	7025.78	14.03	-23.70	395.48	40°07'02.467"N	104°37'33.464"W	10.63	
7138.00	48.480	355.080	7055.06	43.62	6.27	392.85	40°07'02.763"N	104°37'33.497"W	12.84	
7181.00	53.220	355.000	7082.20	76.41	39.49	389.97	40°07'03.091"N	104°37'33.534"W	11.02	
7223.00	59.050	356.470	7105.59	110.77	74.25	387.39	40°07'03.435"N	104°37'33.568"W	14.18	
7266.00	63.520	359.360	7126.25	148.14	111.92	386.04	40°07'03.807"N	104°37'33.585"W	11.95	
7309.00	68.440	3.370	7143.76	187.30	151.16	387.00	40°07'04.195"N	104°37'33.573"W	14.26	
7351.00	72.630	3.730	7157.75	226.86	190.68	389.45	40°07'04.585"N	104°37'33.541"W	10.01	
7394.00	77.220	1.680	7168.93	268.32	232.14	391.40	40°07'04.995"N	104°37'33.516"W	11.62	
7436.00	81.010	2.540	7176.86	309.49	273.35	392.92	40°07'05.402"N	104°37'33.496"W	9.25	
7479.00	84.390	2.930	7182.32	352.09	315.94	394.96	40°07'05.823"N	104°37'33.470"W	7.91	
7521.00	85.440	2.690	7186.05	393.87	357.73	397.01	40°07'06.236"N	104°37'33.444"W	2.56	
7577.00†	87.013	2.639	7189.73	449.69	413.54	399.61	40°07'06.788"N	104°37'33.410"W	2.81	7" Casing Point
7620.00	88.220	2.600	7191.52	492.59	456.46	401.57	40°07'07.212"N	104°37'33.385"W	2.81	
7705.00	89.750	2.200	7193.03	577.46	541.37	405.13	40°07'08.051"N	104°37'33.339"W	1.86	
7789.00	90.550	1.760	7192.81	661.30	625.32	408.03	40°07'08.880"N	104°37'33.302"W	1.09	
7874.00	92.440	0.100	7190.59	746.00	710.27	409.41	40°07'09.720"N	104°37'33.284"W	2.96	
7959.00	92.500	0.800	7186.93	830.60	795.19	410.08	40°07'10.559"N	104°37'33.275"W	0.83	
8045.00	92.500	0.200	7183.17	916.19	881.10	410.83	40°07'11.408"N	104°37'33.266"W	0.70	
8130.00	92.710	0.290	7179.31	1000.75	966.02	411.19	40°07'12.247"N	104°37'33.261"W	0.27	
8215.00	92.770	0.680	7175.25	1085.34	1050.92	411.91	40°07'13.086"N	104°37'33.252"W	0.46	
8300.00	92.950	0.710	7171.01	1169.94	1135.80	412.94	40°07'13.925"N	104°37'33.239"W	0.21	
8386.00	93.230	0.800	7166.37	1255.52	1221.67	414.07	40°07'14.774"N	104°37'33.224"W	0.34	
8471.00	91.380	0.830	7162.95	1340.17	1306.59	415.28	40°07'15.613"N	104°37'33.208"W	2.18	
8556.00	88.950	0.580	7162.71	1424.87	1391.58	416.32	40°07'16.453"N	104°37'33.195"W	2.87	
8642.00	86.850	0.250	7165.86	1510.48	1477.51	416.95	40°07'17.302"N	104°37'33.187"W	2.47	
8727.00	88.300	359.760	7169.45	1595.01	1562.43	416.95	40°07'18.141"N	104°37'33.187"W	1.80	
8812.00	88.950	358.640	7171.49	1679.48	1647.40	415.77	40°07'18.981"N	104°37'33.202"W	1.52	
8897.00	88.760	359.090	7173.19	1732.36	1732.36	414.08	40°07'19.820"N	104°37'33.224"W	0.57	
8982.00	89.630	358.660	7174.39	1848.33	1817.34	412.42	40°07'20.660"N	104°37'33.245"W	1.14	
9067.00	91.040	359.320	7173.89	1932.79	1902.32	410.92	40°07'21.500"N	104°37'33.264"W	1.83	
9153.00	90.640	359.440	7172.63	2018.29	1988.31	409.99	40°07'22.350"N	104°37'33.276"W	0.49	
9236.00	90.300	0.080	7171.95	2100.88	2071.30	409.64	40°07'23.170"N	104°37'33.281"W	0.87	
9321.00	89.750	359.650	7171.91	2185.47	2156.30	409.44	40°07'24.010"N	104°37'33.283"W	0.82	
9406.00	89.910	359.950	7172.16	2270.06	2241.30	409.14	40°07'24.850"N	104°37'33.287"W	0.40	
9492.00	90.770	2.060	7171.65	2355.79	2327.28	410.65	40°07'25.699"N	104°37'33.268"W	2.65	
9577.00	89.880	1.300	7171.17	2440.60	2412.24	413.14	40°07'26.539"N	104°37'33.236"W	1.38	
9661.00	91.080	1.290	7170.47	2524.38	2496.21	415.04	40°07'27.369"N	104°37'33.211"W	1.43	
9746.00	90.990	0.840	7168.93	2609.11	2581.19	416.62	40°07'28.209"N	104°37'33.191"W	0.54	



# Actual Wellpath Report

POWERS 2C-23HZ AWP

Page 4 of 5



## REFERENCE WELLPATH IDENTIFICATION

Operator	ANADARKO E&P COMPANY LP	Slot	SLOT#03 POWERS 2C-23HZ (225'FSL & 1573'FEL, SEC.23)
Area	COLORADO	Well	POWERS 2C-23HZ
Field	WELD COUNTY (KERR MCGEE)	Wellbore	POWERS 2C-23HZ AWB
Facility	SEC.23-T2N-R65W		

## WELLPATH DATA (143 stations)

MD [ft]	Inclination [°]	Azimuth [°]	TVD [ft]	Vert Sect [ft]	North [ft]	East [ft]	Latitude	Longitude	DLS [°/100ft]	Comments
9831.00	90.620	1.720	7167.74	2693.88	2666.16	418.52	40°07'29.048"N	104°37'33.166"W	1.12	
9917.00	90.620	2.050	7166.81	2779.71	2752.10	421.35	40°07'29.898"N	104°37'33.130"W	0.38	
10002.00	90.400	2.280	7166.05	2864.56	2837.04	424.56	40°07'30.737"N	104°37'33.089"W	0.37	
10087.00	90.180	2.630	7165.62	2949.44	2921.96	428.20	40°07'31.576"N	104°37'33.042"W	0.49	
10172.00	88.920	1.850	7166.29	3034.31	3006.89	431.52	40°07'32.415"N	104°37'32.999"W	1.74	
10257.00	88.490	1.260	7168.21	3119.09	3091.84	433.83	40°07'33.255"N	104°37'32.969"W	0.86	
10342.00	88.150	0.490	7170.70	3203.78	3176.79	435.13	40°07'34.094"N	104°37'32.952"W	0.99	
10428.00	89.260	359.220	7172.64	3289.34	3262.76	434.91	40°07'34.944"N	104°37'32.955"W	1.96	
10513.00	89.690	357.710	7173.42	3373.70	3347.73	432.63	40°07'35.784"N	104°37'32.985"W	1.85	
10598.00	90.800	358.920	7173.06	3458.04	3432.69	430.13	40°07'36.623"N	104°37'33.017"W	1.93	
10683.00	90.210	358.110	7172.31	3542.41	3517.65	427.93	40°07'37.463"N	104°37'33.045"W	1.18	
10768.00	90.550	358.510	7171.75	3626.75	3602.62	425.42	40°07'38.302"N	104°37'33.077"W	0.62	
10853.00	91.130	359.190	7170.50	3711.17	3687.59	423.72	40°07'39.142"N	104°37'33.099"W	1.05	
10939.00	91.260	0.550	7168.71	3796.74	3773.57	423.52	40°07'39.992"N	104°37'33.102"W	1.59	
11024.00	90.390	1.210	7167.48	3881.46	3858.55	424.83	40°07'40.832"N	104°37'33.085"W	1.28	
11109.00	88.460	1.500	7168.34	3966.24	3943.51	426.84	40°07'41.671"N	104°37'33.059"W	2.30	
11194.00	87.600	1.820	7171.26	4051.00	4028.43	429.30	40°07'42.510"N	104°37'33.027"W	1.08	
11279.00	88.370	0.900	7174.25	4135.73	4113.35	431.31	40°07'43.350"N	104°37'33.001"W	1.41	
11365.00	90.060	1.150	7175.43	4221.46	4199.32	432.85	40°07'44.199"N	104°37'32.982"W	1.99	
11450.00	89.940	2.170	7175.43	4306.27	4284.29	435.31	40°07'45.039"N	104°37'32.950"W	1.21	
11535.00	89.260	2.270	7176.02	4391.13	4369.22	438.61	40°07'45.878"N	104°37'32.907"W	0.81	
11620.00	88.860	1.330	7177.41	4475.95	4454.17	441.28	40°07'46.718"N	104°37'32.873"W	1.20	
11681.00	88.550	1.560	7178.79	4536.78	4515.13	442.81	40°07'47.320"N	104°37'32.853"W	0.63	Last BHI MWD Survey

## HOLE & CASING SECTIONS - Ref Wellbore: POWERS 2C-23HZ AWB Ref Wellpath: POWERS 2C-23HZ AWP

String/Diameter	Start MD [ft]	End MD [ft]	Interval [ft]	Start TVD [ft]	End TVD [ft]	Start N/S [ft]	Start E/W [ft]	End N/S [ft]	End E/W [ft]
13.5in Open Hole	16.00	950.00	934.00	16.00	948.57	0.21	0.13	-11.81	-40.94
9.625in Casing Surface	16.00	950.00	934.00	16.00	948.57	0.21	0.13	-11.81	-40.94
8.75in Open Hole	950.00	7582.00	6632.00	948.57	7189.99	-11.81	-40.94	418.53	399.84
7in Casing Intermediate	16.00	7577.00	7561.00	16.00	7189.73	0.21	0.13	413.54	399.61
6.125in Open Hole	7577.00	11749.00	4172.00	7189.73	7180.51	413.54	399.61	4583.09	444.66

## TARGETS

Name	MD [ft]	TVD [ft]	North [ft]	East [ft]	Grid East [US ft]	Grid North [US ft]	Latitude	Longitude	Shape
POWERS PAD SECTION LINES		0.00	-0.30	48.17	3244092.03	1286819.99	40°07'02.698"N	104°37'37.934"W	polygon
POWERS PAD HARDLINES (460'SETBACKS)		7172.00	-0.30	48.17	3244092.03	1286819.99	40°07'02.698"N	104°37'37.934"W	polygon
POWERS 2C-23HZ BHL ON PLAT (460'FNL & 1170'FEL,REV-1)		7182.00	4587.99	438.48	3244437.16	1291411.71	40°07'48.040"N	104°37'32.909"W	point

## WELLPATH COMPOSITION - Ref Wellbore: POWERS 2C-23HZ AWB Ref Wellpath: POWERS 2C-23HZ AWP

Start MD [ft]	End MD [ft]	Positional Uncertainty Model	Log Name/Comment	Wellbore
40.00	910.00	Gyrodata standard - Drop gyro or Multi-shot	GYRO SURVEYS <40-910>	POWERS 2C-23HZ AWB
910.00	7521.00	NaviTrak (Standard)	BHI MWD SURVEYS 8 3/4" HOLE <1004-7521>	POWERS 2C-23HZ AWB
7521.00	11681.00	NaviTrak (Standard)	BHI MWD SURVEYS 6 1/8" HOLE <7620-11681>	POWERS 2C-23HZ AWB
11681.00	11749.00	Blind Drilling (std)	Projection to bit	POWERS 2C-23HZ AWB



# Actual Wellpath Report

POWERS 2C-23HZ AWP

Page 5 of 5



## REFERENCE WELLPATH IDENTIFICATION

Operator	ANADARKO E&P COMPANY LP	Slot	SLOT#03 POWERS 2C-23HZ (225'FSL & 1573'FEL, SEC.23)
Area	COLORADO	Well	POWERS 2C-23HZ
Field	WELD COUNTY (KERR MCGEE)	Wellbore	POWERS 2C-23HZ AWB
Facility	SEC.23-T2N-R65W		

## WELLPATH COMMENTS

MD [ft]	Inclination [°]	Azimuth [°]	TVD [ft]	Comment
910.00	5.400	283.600	908.72	Tie-Into GYRO Surveys
1004.00	3.500	283.000	1002.43	Begin BHI MWD Surveys
7577.00	87.013	2.639	7189.73	7" Casing Point
11681.00	88.550	1.560	7178.79	Last BHI MWD Survey
11749.00	88.550	1.560	7180.51	Projection to Bit