

S 1/4 Cor. Sec. 32  
1970 Brass Cap, 0.2' High  
E-W Fenceline  
Lat: 39.651225°  
Long: 108.192233°

**T5S, R96W, 6th P.M.**

SE Cor. Sec. 33  
1953 Brass Cap  
0.2' High, Pile  
of Stones, Fence  
Lat: 39.651322°  
Long: 108.164147°

SW Cor. Sec. 33  
1970 Brass Cap, 0.2' High  
Steel Post, Fenceline  
Lat: 39.651258°  
Long: 108.182847°

**Sec. 33**

S89°35'21"W - 2638.68' (Meas.)  
C.C. 1917 Brass Cap  
0.5' High, Pile of Stones, Fence  
Lat: 39.651322°  
Long: 108.164839°

**COC065556**

S89°40'56"W - 2629.55' (Meas.)

**PROPERTY  
LINE**

C.C. 1917 Brass Cap  
Lat: 39.651256°  
Long: 108.183561°

**T4S**

S 1/4 Cor. Sec. 33  
1970 Brass Cap  
0.3' High, Fence Cor.  
Lat: 39.651286°  
Long: 108.173514°

**T5S**

True Position

(C.C.)

N00°11'23"W

2654.26' (Meas. To C.C.)

N00°11'23"W

2653.24' (Meas. To True)

1911'

34'

2634.55' (Meas.)

N00°18'20"W

2634.55' (Meas.)

N00°18'20"W

2634.55' (Meas.)

N00°18'20"W

2634.55' (Meas.)

N00°18'20"W

2634.55' (Meas.)

N00°18'20"W

2634.55' (Meas.)

N00°18'20"W

2634.55' (Meas.)

N00°18'20"W

2634.55' (Meas.)

N00°18'20"W

2634.55' (Meas.)

N00°18'20"W

2634.55' (Meas.)

N00°18'20"W

2634.55' (Meas.)

N00°18'20"W

2634.55' (Meas.)

N00°18'20"W

2634.55' (Meas.)

N00°18'20"W

2634.55' (Meas.)

N00°18'20"W

2634.55' (Meas.)

N00°18'20"W

2634.55' (Meas.)

N00°18'20"W

2634.55' (Meas.)

N00°18'20"W

2634.55' (Meas.)

N00°18'20"W

2634.55' (Meas.)

N00°18'20"W

2634.55' (Meas.)

N00°18'20"W

2634.55' (Meas.)

N00°18'20"W

2634.55' (Meas.)

N00°18'20"W

2634.55' (Meas.)

N00°18'20"W

2634.55' (Meas.)

**Encana OIL & GAS (USA) INC.**

Well location, N. PARACHUTE UWF07B-03 H04 596 (SURFACE LOCATION), located as shown in the SE 1/4 NE 1/4 of Section 4, T5S, R96W, 6th P.M., Garfield County, Colorado.

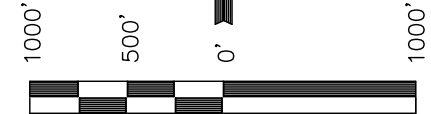
**BASIS OF ELEVATION**

BENCH MARK (H79) LOCATED IN THE NE 1/4 OF SECTION 35, T4S, R98W, 6th P.M. TAKEN FROM THE BULL FORK QUADRANGLE, COLORADO, 7.5 MINUTE SERIES (TOPO GRAPHICAL MAP) PUBLISHED BY THE UNITED STATES DEPARTMENT OF THE INTERIOR, GEOLOGICAL SURVEY. SAID ELEVATION IS MARKED AS BEING 8535 FEET.

**BASIS OF BEARINGS**

BASIS OF BEARINGS IS A G.P.S. OBSERVATION.

*Sheet 1s of 9*



**SCALE**

**CERTIFICATE**

THIS IS TO CERTIFY THAT THE ABOVE PLAT WAS PREPARED AND LOCATION AS SHOWN WAS STAKED ON THE GROUND FROM FIELD NOTES OF ACTUAL SURVEYS MADE BY ME OR UNDER MY SUPERVISION AND THAT THE SAME ARE TRUE AND CORRECT TO THE BEST OF MY KNOWLEDGE AND BELIEF.

*[Signature]*  
17492  
REGISTERED LAND SURVEYOR  
REGISTRATION NO. 17492  
STATE OF COLORADO  
04-20-12

**UINTAH ENGINEERING & LAND SURVEYING**  
85 SOUTH 200 EAST - VERNAL, UTAH 84078  
(435) 789-1017

S 1/4 Cor. Sec. 32  
1970 Brass Cap, 0.2' High  
E-W Fenceline  
Lat: 39.651225°  
Long: 108.192233°

**T5S, R96W, 6th P.M.**

SE Cor. Sec. 33  
1953 Brass Cap  
0.2' High, Pile  
of Stones, Fence  
Lat: 39.651322°  
Long: 108.164147°

SW Cor. Sec. 33  
1970 Brass Cap, 0.2' High  
Steel Post, Fenceline  
Lat: 39.651258°  
Long: 108.182847°

**Sec. 33**

S89°35'21"W - 2638.68' (Meas.)  
C.C. 1917 Brass Cap  
0.5' High, Pile of Stones, Fence  
Lat: 39.651322°  
Long: 108.164839°

**COC065556**

S89°40'56"W - 2629.55' (Meas.)

**PROPERTY  
LINE**

C.C. 1917 Brass Cap  
Lat: 39.651256°  
Long: 108.183561°

**T4S**

S 1/4 Cor. Sec. 33  
1970 Brass Cap  
0.3' High, Fence Cor.  
Lat: 39.651286°  
Long: 108.173514°

**T5S**

True Position

(C.C.)

N00°11'23"W

2654.26' (Meas. To C.C.)

N00°11'23"W

2653.24' (Meas. To True)

1911'

34'

2634.55' (Meas.)

N00°18'20"W

2634.55' (Meas.)

N00°18'20"W

2634.55' (Meas.)

N00°18'20"W

2634.55' (Meas.)

N00°18'20"W

2634.55' (Meas.)

N00°18'20"W

2634.55' (Meas.)

N00°18'20"W

2634.55' (Meas.)

N00°18'20"W

2634.55' (Meas.)

N00°18'20"W

2634.55' (Meas.)

N00°18'20"W

2634.55' (Meas.)

N00°18'20"W

2634.55' (Meas.)

N00°18'20"W

2634.55' (Meas.)

N00°18'20"W

2634.55' (Meas.)

N00°18'20"W

2634.55' (Meas.)

N00°18'20"W

2634.55' (Meas.)

N00°18'20"W

2634.55' (Meas.)

N00°18'20"W

2634.55' (Meas.)

N00°18'20"W

2634.55' (Meas.)

N00°18'20"W

2634.55' (Meas.)

N00°18'20"W

2634.55' (Meas.)

N00°18'20"W

2634.55' (Meas.)

N00°18'20"W

2634.55' (Meas.)

N00°18'20"W

2634.55' (Meas.)

N00°18'20"W

2634.55' (Meas.)

**LEGEND:**

└─┘ = 90° SYMBOL

● = PROPOSED WELL HEAD.

▲ = SECTION CORNERS LOCATED.

△ = SECTION CORNERS  
RE-ESTABLISHED.  
(Not Set on Ground.)

**LINE TABLE**

LINE	DIRECTION	LENGTH
L1	N89°35'21"E	195.03'
L2	S89°37'21"W	200.90'

PDOP = 1.3

<b>NAD 83 (SURFACE LOCATION)</b>	
LATITUDE	= 39°38'45.87" (39.646075)
LONGITUDE	= 108°09'53.82" (108.164950)
<b>NAD 27 (SURFACE LOCATION)</b>	
LATITUDE	= 39°38'45.96" (39.646100)
LONGITUDE	= 108°09'51.53" (108.164314)

SCALE 1" = 1000'	DATE SURVEYED: 04-11-12	DATE DRAWN: 04-17-12
PARTY B.B. C.C. T.B.	REFERENCES G.L.O. PLAT	
WEATHER COLD	FILE Encana OIL & GAS (USA) INC.	

T5S, R96W, 6th P.M.

Encana OIL & GAS (USA) INC.

Well location, N. PARACHUTE UWF07B-03 H04 596 (TARGET BOTTOM HOLE), located as shown in the SE 1/4 NE 1/4 of Section 3, T5S, R96W, 6th P.M., Garfield County, Colorado.

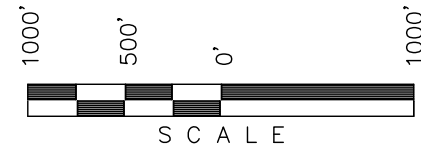
### BASIS OF ELEVATION

BENCH MARK (H79) LOCATED IN THE NE 1/4 OF SECTION 35, T4S, R98W, 6th P.M. TAKEN FROM THE BULL FORK QUADRANGLE, COLORADO, 7.5 MINUTE SERIES (TOPO GRAPHICAL MAP) PUBLISHED BY THE UNITED STATES DEPARTMENT OF THE INTERIOR, GEOLOGICAL SURVEY. SAID ELEVATION IS MARKED AS BEING 8535 FEET.

### BASIS OF BEARINGS

BASIS OF BEARINGS IS A G.P.S. OBSERVATION.

Sheet 1t of 9



### CERTIFICATE

THIS IS TO CERTIFY THAT THE ABOVE PLAT WAS PREPARED AND LOCATION AS SHOWN WAS STAKED ON THE GROUND FROM FIELD NOTES OF ACTUAL SURVEYS MADE BY ME OR UNDER MY SUPERVISION AND THAT THE SAME ARE TRUE AND CORRECT TO THE BEST OF MY KNOWLEDGE AND BELIEF.

REGISTERED LAND SURVEYOR  
REGISTRATION NO. 17492  
STATE OF COLORADO  
04-20-12

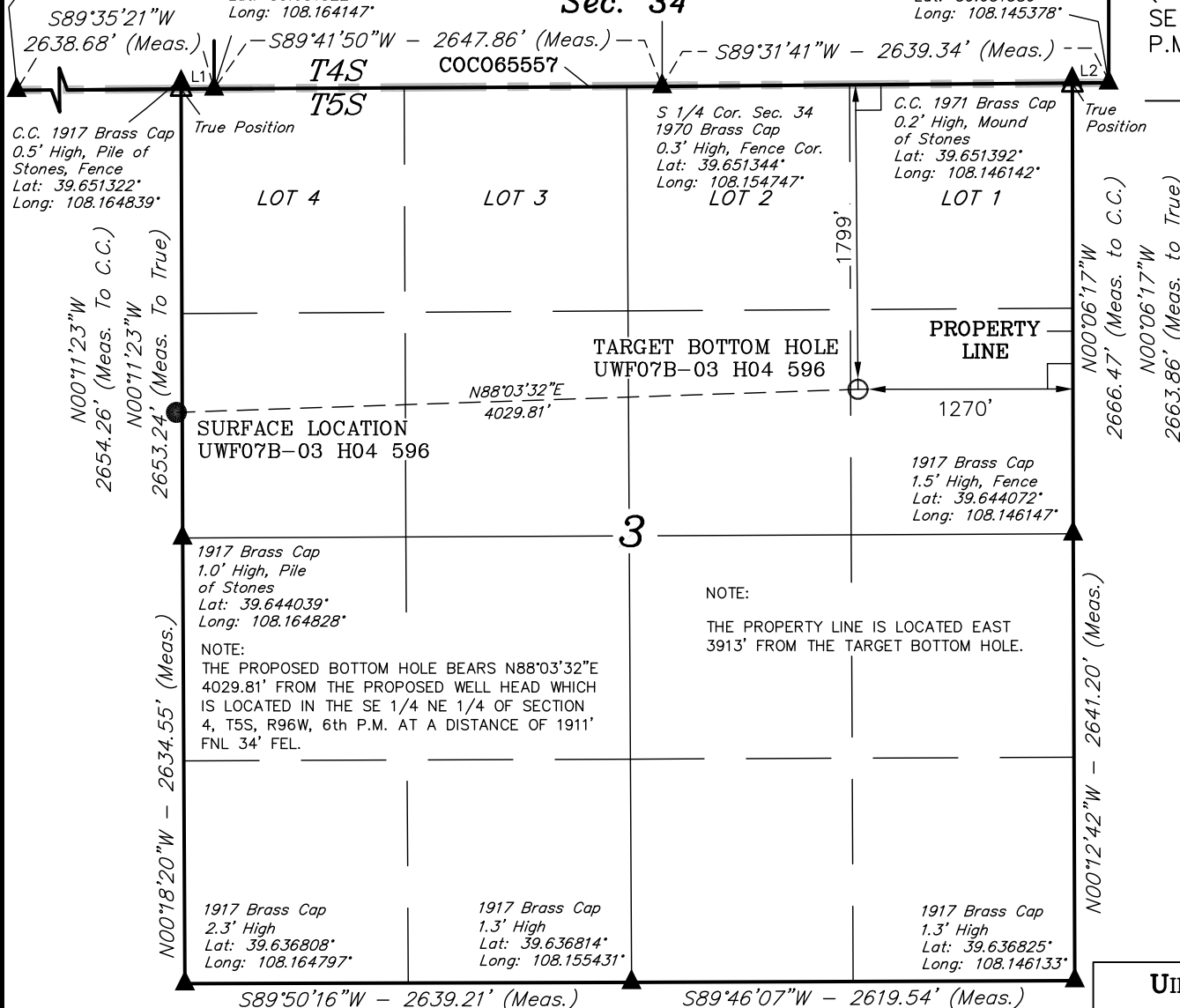
**UINTAH ENGINEERING & LAND SURVEYING**  
85 SOUTH 200 EAST - VERNAL, UTAH 84078  
(435) 789-1017

SCALE 1" = 1000'	DATE SURVEYED: 04-11-12	DATE DRAWN: 04-17-12
PARTY B.B. C.C. T.B.	REFERENCES G.L.O. PLAT	
WEATHER COLD	FILE Encana OIL & GAS (USA) INC.	

S 1/4 Cor. Sec. 33  
1970 Brass Cap  
0.3' High, Fence Cor.  
Lat: 39.651286°  
Long: 108.173514°

SW Cor. Sec. 34  
1953 Brass Cap  
0.2' High, Pile  
of Stones, Fence  
Lat: 39.651322°  
Long: 108.164147°

SE Cor. Sec. 34  
1953 Brass Cap  
0.2' High, E-W  
Fenceline, Mound  
of Stones, Steel Post  
Lat: 39.651386°  
Long: 108.145378°



### LEGEND:

- └─ = 90° SYMBOL
- = PROPOSED WELL HEAD.
- ▲ = SECTION CORNERS LOCATED.
- △ = SECTION CORNERS RE-ESTABLISHED.  
(Not Set on Ground.)

LINE TABLE		
LINE	DIRECTION	LENGTH
L1	N89°35'21"E	195.03'
L2	S89°31'41"W	215.17'

**NAD 83 (TARGET BOTTOM HOLE)**  
LATITUDE = 39°38'47.13" (39.646425)  
LONGITUDE = 108°09'02.35" (108.150653)  
**NAD 27 (TARGET BOTTOM HOLE)**  
LATITUDE = 39°38'47.22" (39.646450)  
LONGITUDE = 108°09'00.06" (108.150017)