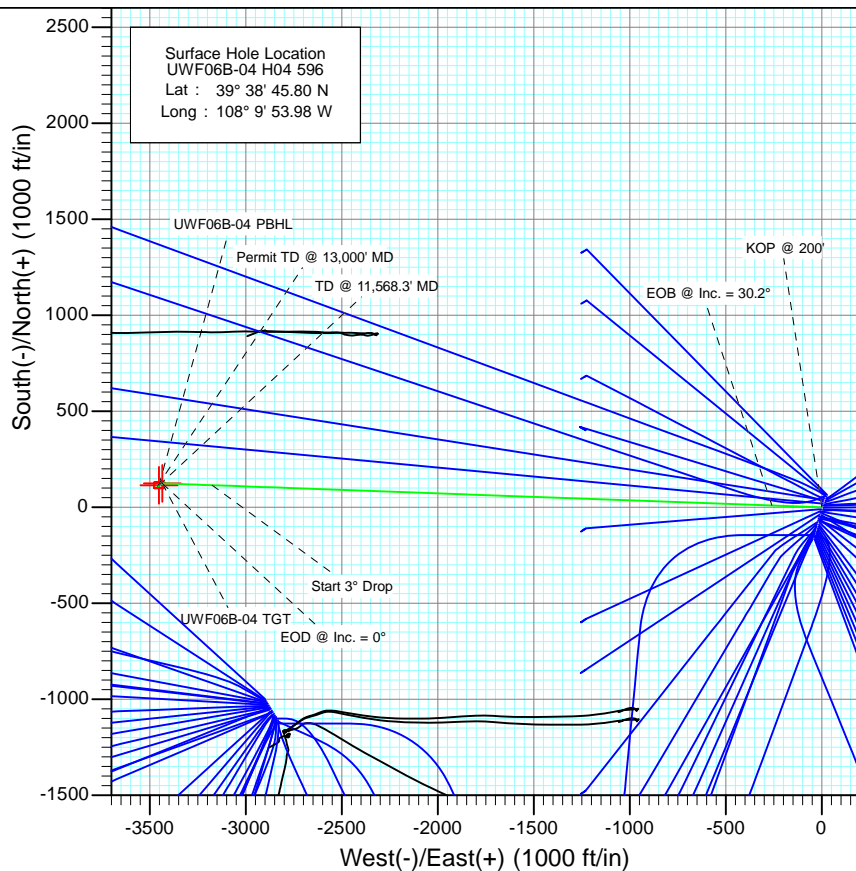


SECTION DETAILS

Sec	MD	Inc	Azi	TVD	+N/-S	+E/-W	Dleg	TFace	VSec	Target
1	0.0	0.00	0.00	0.0	0.0	0.0	0.00	0.00	0.0	
2	200.0	0.00	0.00	200.0	0.0	0.0	0.00	0.00	0.0	
3	1206.6	30.20	272.08	1160.7	9.4	-259.0	3.00	272.08	259.2	
4	7007.6	30.20	272.08	6174.3	115.2	-3175.1	0.00	0.00	3177.1	UWF06B-04 TGT
5	8014.2	0.00	0.00	7135.0	124.6	-3434.1	3.00	180.00	3436.3	
6	9819.5	0.43	239.54	8940.3	121.2	-3439.9	0.02	239.54	3442.0	UWF06B-04 PBHL
7	11568.3	0.43	239.54	10689.0	114.6	-3451.1	0.00	0.00	3453.0	
8	13000.0	0.43	239.54	12120.7	109.2	-3460.3	0.00	0.00	3462.1	



Azimuths to True North
Magnetic North: 10.34°

Magnetic Field
Strength: 52206.1snT
Dip Angle: 65.81°
Date: 4/18/2012
Model: IGRF2010

FORMATION TOP DETAILS

TVDPath	MDPath	Formation
1073.0	1106.7	A GROOVE
1231.0	1288.0	B GROOVE
1271.0	1334.3	B GROOVE BASE
2064.0	2251.8	GARDEN GULCH
3130.0	3485.2	WASATCH FM
5141.0	5812.0	WASATCH G
7135.0	8014.2	WILLIAMS FORK
10689.0	11568.3	ROLLINS
10925.0	11804.3	COZZETTE
11093.0	11972.3	CORCORAN
11397.0	12276.3	UPPER SEGO

Plan #1 UWF06B-04 H04 596 125XXX; SC KBE @ 8293.0ft (Original Well Elev) North American Datum 1983 Well UWF06B-04 H04 596, True North						
Type	Target	Azimuth	Origin	Type	N/S	E/W
TD	No Target (Freehand)	271.81	Slot		0.0	0.0
Name	TVD	+N/-S	+E/-W	Latitude	Longitude	
UWF06B-04 TGT	7135.0	124.6	-3434.1	39° 38' 47.03 N	108° 10' 37.88 W	
UWF06B-04 PBHL	10689.0	114.6	-3451.1	39° 38' 46.93 N	108° 10' 38.10 W	

Cathedral Energy Services

Planning Report

Database:	USA EDM 5000 Multi Users DB	Local Co-ordinate Reference:	Well UWF06B-04 H04 596
Company:	EnCana Oil & Gas (USA) Inc	TVD Reference:	KBE @ 8293.0ft (Original Well Elev)
Project:	North Piceance	MD Reference:	KBE @ 8293.0ft (Original Well Elev)
Site:	H04 Pad	North Reference:	True
Well:	UWF06B-04 H04 596	Survey Calculation Method:	Minimum Curvature
Wellbore:	DD		
Design:	Plan #1		

Project	North Piceance		
Map System:	US State Plane 1983	System Datum:	Mean Sea Level
Geo Datum:	North American Datum 1983		
Map Zone:	Colorado Central Zone		

Site		H04 Pad			
Site Position:		Northing:	1,671,070.85 ft	Latitude:	39° 38' 44.37 N
From:	Lat/Long	Easting:	2,249,607.93 ft	Longitude:	108° 9' 54.50 W
Position Uncertainty:	0.0 ft	Slot Radius:	13.200 in	Grid Convergence:	-1.68 °

Well	UWF06B-04 H04 596					
Well Position	+N/-S	0.0 ft	Northing:	1,671,214.28 ft	Latitude:	39° 38' 45.80 N
	+E/-W	0.0 ft	Easting:	2,249,652.83 ft	Longitude:	108° 9' 53.98 W
Position Uncertainty		0.0 ft	Wellhead Elevation:	ft	Ground Level:	8,260.0 ft

Wellbore	DD				
Magnetics	Model Name	Sample Date	Declination (°)	Dip Angle (°)	Field Strength (nT)
	IGRF2010	4/18/2012	10.34	65.81	52,206

Design	Plan #1				
Audit Notes:					
Version:	Phase:	PLAN		Tie On Depth:	0.0
Vertical Section:	Depth From (TVD) (ft)	+N/-S (ft)	+E/-W (ft)	Direction (°)	
	0.0	0.0	0.0	271.81	

Plan Sections										
Measured Depth (ft)	Inclination (°)	Azimuth (°)	Vertical Depth (ft)	+N/-S (ft)	+E/-W (ft)	Dogleg Rate (°/100ft)	Build Rate (°/100ft)	Turn Rate (°/100ft)	TFO (°)	Target
0.0	0.00	0.00	0.0	0.0	0.0	0.00	0.00	0.00	0.00	
200.0	0.00	0.00	200.0	0.0	0.0	0.00	0.00	0.00	0.00	
1,206.6	30.20	272.08	1,160.7	9.4	-259.0	3.00	3.00	0.00	272.08	
7,007.6	30.20	272.08	6,174.3	115.2	-3,175.1	0.00	0.00	0.00	0.00	
8,014.2	0.00	0.00	7,135.0	124.6	-3,434.1	3.00	-3.00	0.00	180.00	UWF06B-04 TGT
9,819.5	0.43	239.54	8,940.3	121.2	-3,439.9	0.02	0.02	-6.67	239.54	
11,568.3	0.43	239.54	10,689.0	114.6	-3,451.1	0.00	0.00	0.00	0.00	UWF06B-04 PBHL
13,000.0	0.43	239.54	12,120.7	109.2	-3,460.3	0.00	0.00	0.00	0.00	

Cathedral Energy Services

Planning Report

Database:	USA EDM 5000 Multi Users DB	Local Co-ordinate Reference:	Well UWF06B-04 H04 596
Company:	EnCana Oil & Gas (USA) Inc	TVD Reference:	KBE @ 8293.0ft (Original Well Elev)
Project:	North Piceance	MD Reference:	KBE @ 8293.0ft (Original Well Elev)
Site:	H04 Pad	North Reference:	True
Well:	UWF06B-04 H04 596	Survey Calculation Method:	Minimum Curvature
Wellbore:	DD		
Design:	Plan #1		

Planned Survey

Measured Depth (ft)	Inclination (°)	Azimuth (°)	Vertical Depth (ft)	+N/-S (ft)	+E/-W (ft)	Vertical Section (ft)	Dogleg Rate (°/100ft)	Build Rate (°/100ft)	Comments / Formations
0.0	0.00	0.00	0.0	0.0	0.0	0.0	0.00	0.00	
100.0	0.00	0.00	100.0	0.0	0.0	0.0	0.00	0.00	
200.0	0.00	0.00	200.0	0.0	0.0	0.0	0.00	0.00	KOP @ 200'
300.0	3.00	272.08	300.0	0.1	-2.6	2.6	3.00	3.00	
400.0	6.00	272.08	399.6	0.4	-10.5	10.5	3.00	3.00	
500.0	9.00	272.08	498.8	0.9	-23.5	23.5	3.00	3.00	
600.0	12.00	272.08	597.1	1.5	-41.7	41.7	3.00	3.00	
700.0	15.00	272.08	694.3	2.4	-65.0	65.1	3.00	3.00	
800.0	18.00	272.08	790.2	3.4	-93.4	93.5	3.00	3.00	
900.0	21.00	272.08	884.4	4.6	-126.8	126.9	3.00	3.00	
1,000.0	24.00	272.08	976.8	6.0	-165.0	165.1	3.00	3.00	
1,100.0	27.00	272.08	1,067.1	7.5	-208.0	208.2	3.00	3.00	
1,106.7	27.20	272.08	1,073.0	7.7	-211.1	211.2	3.00	3.00	A GROOVE
1,206.6	30.20	272.08	1,160.7	9.4	-259.0	259.2	3.00	3.00	EOB @ Inc. = 30.2°
1,288.0	30.20	272.08	1,231.0	10.9	-299.9	300.1	0.00	0.00	B GROOVE
1,300.0	30.20	272.08	1,241.4	11.1	-306.0	306.2	0.00	0.00	
1,334.3	30.20	272.08	1,271.0	11.7	-323.2	323.4	0.00	0.00	B GROOVE BASE
1,400.0	30.20	272.08	1,327.8	12.9	-356.2	356.5	0.00	0.00	
1,500.0	30.20	272.08	1,414.2	14.7	-406.5	406.8	0.00	0.00	
1,600.0	30.20	272.08	1,500.6	16.6	-456.8	457.1	0.00	0.00	
1,700.0	30.20	272.08	1,587.1	18.4	-507.0	507.4	0.00	0.00	
1,800.0	30.20	272.08	1,673.5	20.2	-557.3	557.7	0.00	0.00	
1,900.0	30.20	272.08	1,759.9	22.0	-607.6	608.0	0.00	0.00	
2,000.0	30.20	272.08	1,846.4	23.9	-657.8	658.3	0.00	0.00	
2,100.0	30.20	272.08	1,932.8	25.7	-708.1	708.6	0.00	0.00	
2,200.0	30.20	272.08	2,019.2	27.5	-758.4	758.9	0.00	0.00	
2,251.8	30.20	272.08	2,064.0	28.5	-784.4	784.9	0.00	0.00	GARDEN GULCH
2,300.0	30.20	272.08	2,105.6	29.3	-808.6	809.2	0.00	0.00	
2,400.0	30.20	272.08	2,192.1	31.2	-858.9	859.5	0.00	0.00	
2,500.0	30.20	272.08	2,278.5	33.0	-909.2	909.8	0.00	0.00	
2,600.0	30.20	272.08	2,364.9	34.8	-959.4	960.1	0.00	0.00	
2,700.0	30.20	272.08	2,451.4	36.6	-1,009.7	1,010.4	0.00	0.00	
2,800.0	30.20	272.08	2,537.8	38.5	-1,060.0	1,060.7	0.00	0.00	
2,900.0	30.20	272.08	2,624.2	40.3	-1,110.3	1,111.0	0.00	0.00	
3,000.0	30.20	272.08	2,710.6	42.1	-1,160.5	1,161.3	0.00	0.00	
3,100.0	30.20	272.08	2,797.1	43.9	-1,210.8	1,211.6	0.00	0.00	
3,200.0	30.20	272.08	2,883.5	45.8	-1,261.1	1,261.9	0.00	0.00	
3,300.0	30.20	272.08	2,969.9	47.6	-1,311.3	1,312.2	0.00	0.00	
3,400.0	30.20	272.08	3,056.3	49.4	-1,361.6	1,362.5	0.00	0.00	
3,485.2	30.20	272.08	3,130.0	51.0	-1,404.4	1,405.3	0.00	0.00	WASATCH FM
3,500.0	30.20	272.08	3,142.8	51.2	-1,411.9	1,412.8	0.00	0.00	
3,600.0	30.20	272.08	3,229.2	53.1	-1,462.1	1,463.1	0.00	0.00	
3,700.0	30.20	272.08	3,315.6	54.9	-1,512.4	1,513.4	0.00	0.00	
3,800.0	30.20	272.08	3,402.1	56.7	-1,562.7	1,563.7	0.00	0.00	
3,900.0	30.20	272.08	3,488.5	58.5	-1,612.9	1,614.0	0.00	0.00	
4,000.0	30.20	272.08	3,574.9	60.3	-1,663.2	1,664.3	0.00	0.00	
4,100.0	30.20	272.08	3,661.3	62.2	-1,713.5	1,714.6	0.00	0.00	
4,200.0	30.20	272.08	3,747.8	64.0	-1,763.7	1,764.9	0.00	0.00	
4,300.0	30.20	272.08	3,834.2	65.8	-1,814.0	1,815.2	0.00	0.00	
4,400.0	30.20	272.08	3,920.6	67.6	-1,864.3	1,865.5	0.00	0.00	
4,500.0	30.20	272.08	4,007.1	69.5	-1,914.5	1,915.8	0.00	0.00	
4,600.0	30.20	272.08	4,093.5	71.3	-1,964.8	1,966.1	0.00	0.00	

Cathedral Energy Services

Planning Report

Database:	USA EDM 5000 Multi Users DB	Local Co-ordinate Reference:	Well UWF06B-04 H04 596
Company:	EnCana Oil & Gas (USA) Inc	TVD Reference:	KBE @ 8293.0ft (Original Well Elev)
Project:	North Piceance	MD Reference:	KBE @ 8293.0ft (Original Well Elev)
Site:	H04 Pad	North Reference:	True
Well:	UWF06B-04 H04 596	Survey Calculation Method:	Minimum Curvature
Wellbore:	DD		
Design:	Plan #1		

Planned Survey

Measured Depth (ft)	Inclination (°)	Azimuth (°)	Vertical Depth (ft)	+N/-S (ft)	+E/-W (ft)	Vertical Section (ft)	Dogleg Rate (°/100ft)	Build Rate (°/100ft)	Comments / Formations
4,700.0	30.20	272.08	4,179.9	73.1	-2,015.1	2,016.4	0.00	0.00	
4,800.0	30.20	272.08	4,266.3	74.9	-2,065.3	2,066.7	0.00	0.00	
4,900.0	30.20	272.08	4,352.8	76.8	-2,115.6	2,117.0	0.00	0.00	
5,000.0	30.20	272.08	4,439.2	78.6	-2,165.9	2,167.3	0.00	0.00	
5,100.0	30.20	272.08	4,525.6	80.4	-2,216.2	2,217.6	0.00	0.00	
5,200.0	30.20	272.08	4,612.1	82.2	-2,266.4	2,267.9	0.00	0.00	
5,300.0	30.20	272.08	4,698.5	84.1	-2,316.7	2,318.2	0.00	0.00	
5,400.0	30.20	272.08	4,784.9	85.9	-2,367.0	2,368.5	0.00	0.00	
5,500.0	30.20	272.08	4,871.3	87.7	-2,417.2	2,418.8	0.00	0.00	
5,600.0	30.20	272.08	4,957.8	89.5	-2,467.5	2,469.1	0.00	0.00	
5,700.0	30.20	272.08	5,044.2	91.4	-2,517.8	2,519.4	0.00	0.00	
5,800.0	30.20	272.08	5,130.6	93.2	-2,568.0	2,569.7	0.00	0.00	
5,812.0	30.20	272.08	5,141.0	93.4	-2,574.1	2,575.7	0.00	0.00	WASATCH G
5,900.0	30.20	272.08	5,217.0	95.0	-2,618.3	2,620.0	0.00	0.00	
6,000.0	30.20	272.08	5,303.5	96.8	-2,668.6	2,670.3	0.00	0.00	
6,100.0	30.20	272.08	5,389.9	98.6	-2,718.8	2,720.6	0.00	0.00	
6,200.0	30.20	272.08	5,476.3	100.5	-2,769.1	2,770.9	0.00	0.00	
6,300.0	30.20	272.08	5,562.8	102.3	-2,819.4	2,821.2	0.00	0.00	
6,400.0	30.20	272.08	5,649.2	104.1	-2,869.6	2,871.5	0.00	0.00	
6,500.0	30.20	272.08	5,735.6	105.9	-2,919.9	2,921.8	0.00	0.00	
6,600.0	30.20	272.08	5,822.0	107.8	-2,970.2	2,972.1	0.00	0.00	
6,700.0	30.20	272.08	5,908.5	109.6	-3,020.4	3,022.4	0.00	0.00	
6,800.0	30.20	272.08	5,994.9	111.4	-3,070.7	3,072.7	0.00	0.00	
6,900.0	30.20	272.08	6,081.3	113.2	-3,121.0	3,123.0	0.00	0.00	
7,007.6	30.20	272.08	6,174.3	115.2	-3,175.1	3,177.1	0.00	0.00	Start 3° Drop
7,100.0	27.43	272.08	6,255.3	116.8	-3,219.6	3,221.6	3.00	-3.00	
7,200.0	24.43	272.08	6,345.2	118.4	-3,263.3	3,265.4	3.00	-3.00	
7,300.0	21.43	272.08	6,437.3	119.8	-3,302.2	3,304.3	3.00	-3.00	
7,400.0	18.43	272.08	6,531.3	121.0	-3,336.2	3,338.4	3.00	-3.00	
7,500.0	15.43	272.08	6,626.9	122.1	-3,365.3	3,367.5	3.00	-3.00	
7,600.0	12.43	272.08	6,724.0	123.0	-3,389.4	3,391.6	3.00	-3.00	
7,700.0	9.43	272.08	6,822.2	123.7	-3,408.3	3,410.5	3.00	-3.00	
7,800.0	6.43	272.08	6,921.2	124.2	-3,422.1	3,424.3	3.00	-3.00	
7,900.0	3.43	272.08	7,020.8	124.5	-3,430.7	3,432.9	3.00	-3.00	
8,000.0	0.43	272.08	7,120.8	124.6	-3,434.0	3,436.3	3.00	-3.00	
8,014.2	0.00	0.00	7,135.0	124.6	-3,434.1	3,436.3	3.00	-3.00	EOD @ Inc. = 0° - WILLIAMS FORK
8,100.0	0.02	239.54	7,220.8	124.6	-3,434.1	3,436.3	0.02	0.02	
8,200.0	0.04	239.54	7,320.8	124.6	-3,434.2	3,436.4	0.02	0.02	
8,300.0	0.07	239.54	7,420.8	124.5	-3,434.2	3,436.5	0.02	0.02	
8,400.0	0.09	239.54	7,520.8	124.4	-3,434.4	3,436.6	0.02	0.02	
8,500.0	0.11	239.54	7,620.8	124.4	-3,434.5	3,436.7	0.02	0.02	
8,600.0	0.14	239.54	7,720.8	124.2	-3,434.7	3,436.9	0.02	0.02	
8,700.0	0.16	239.54	7,820.8	124.1	-3,434.9	3,437.1	0.02	0.02	
8,800.0	0.19	239.54	7,920.8	124.0	-3,435.2	3,437.4	0.02	0.02	
8,900.0	0.21	239.54	8,020.8	123.8	-3,435.5	3,437.7	0.02	0.02	
9,000.0	0.23	239.54	8,120.8	123.6	-3,435.8	3,438.0	0.02	0.02	
9,100.0	0.26	239.54	8,220.8	123.4	-3,436.2	3,438.4	0.02	0.02	
9,200.0	0.28	239.54	8,320.8	123.1	-3,436.6	3,438.8	0.02	0.02	
9,300.0	0.30	239.54	8,420.8	122.9	-3,437.0	3,439.2	0.02	0.02	
9,400.0	0.33	239.54	8,520.8	122.6	-3,437.5	3,439.7	0.02	0.02	
9,500.0	0.35	239.54	8,620.7	122.3	-3,438.0	3,440.2	0.02	0.02	
9,600.0	0.38	239.54	8,720.7	122.0	-3,438.6	3,440.7	0.02	0.02	

Cathedral Energy Services

Planning Report

Database:	USA EDM 5000 Multi Users DB	Local Co-ordinate Reference:	Well UWF06B-04 H04 596
Company:	EnCana Oil & Gas (USA) Inc	TVD Reference:	KBE @ 8293.0ft (Original Well Elev)
Project:	North Piceance	MD Reference:	KBE @ 8293.0ft (Original Well Elev)
Site:	H04 Pad	North Reference:	True
Well:	UWF06B-04 H04 596	Survey Calculation Method:	Minimum Curvature
Wellbore:	DD		
Design:	Plan #1		

Planned Survey									
Measured Depth (ft)	Inclination (°)	Azimuth (°)	Vertical Depth (ft)	+N/-S (ft)	+E/-W (ft)	Vertical Section (ft)	Dogleg Rate (°/100ft)	Build Rate (°/100ft)	Comments / Formations
9,700.0	0.40	239.54	8,820.7	121.6	-3,439.2	3,441.3	0.02	0.02	
9,800.0	0.42	239.54	8,920.7	121.3	-3,439.8	3,441.9	0.02	0.02	
9,819.5	0.43	239.54	8,940.3	121.2	-3,439.9	3,442.0	0.02	0.02	
9,900.0	0.43	239.54	9,020.7	120.9	-3,440.4	3,442.5	0.00	0.00	
10,000.0	0.43	239.54	9,120.7	120.5	-3,441.1	3,443.2	0.00	0.00	
10,100.0	0.43	239.54	9,220.7	120.1	-3,441.7	3,443.8	0.00	0.00	
10,200.0	0.43	239.54	9,320.7	119.7	-3,442.3	3,444.4	0.00	0.00	
10,300.0	0.43	239.54	9,420.7	119.4	-3,443.0	3,445.0	0.00	0.00	
10,400.0	0.43	239.54	9,520.7	119.0	-3,443.6	3,445.7	0.00	0.00	
10,500.0	0.43	239.54	9,620.7	118.6	-3,444.3	3,446.3	0.00	0.00	
10,600.0	0.43	239.54	9,720.7	118.2	-3,444.9	3,446.9	0.00	0.00	
10,700.0	0.43	239.54	9,820.7	117.9	-3,445.6	3,447.6	0.00	0.00	
10,800.0	0.43	239.54	9,920.7	117.5	-3,446.2	3,448.2	0.00	0.00	
10,900.0	0.43	239.54	10,020.7	117.1	-3,446.8	3,448.8	0.00	0.00	
11,000.0	0.43	239.54	10,120.7	116.7	-3,447.5	3,449.5	0.00	0.00	
11,100.0	0.43	239.54	10,220.7	116.3	-3,448.1	3,450.1	0.00	0.00	
11,200.0	0.43	239.54	10,320.7	116.0	-3,448.8	3,450.7	0.00	0.00	
11,300.0	0.43	239.54	10,420.7	115.6	-3,449.4	3,451.3	0.00	0.00	
11,400.0	0.43	239.54	10,520.7	115.2	-3,450.1	3,452.0	0.00	0.00	
11,500.0	0.43	239.54	10,620.7	114.8	-3,450.7	3,452.6	0.00	0.00	
11,568.3	0.43	239.54	10,689.0	114.6	-3,451.1	3,453.0	0.00	0.00	TD @ 11,568.3' MD - ROLLINS
11,600.0	0.43	239.54	10,720.7	114.5	-3,451.3	3,453.2	0.00	0.00	
11,700.0	0.43	239.54	10,820.7	114.1	-3,452.0	3,453.9	0.00	0.00	
11,800.0	0.43	239.54	10,920.7	113.7	-3,452.6	3,454.5	0.00	0.00	
11,804.3	0.43	239.54	10,925.0	113.7	-3,452.7	3,454.5	0.00	0.00	COZZETTE
11,900.0	0.43	239.54	11,020.7	113.3	-3,453.3	3,455.1	0.00	0.00	
11,972.3	0.43	239.54	11,093.0	113.1	-3,453.7	3,455.6	0.00	0.00	CORCORAN
12,000.0	0.43	239.54	11,120.7	112.9	-3,453.9	3,455.8	0.00	0.00	
12,100.0	0.43	239.54	11,220.7	112.6	-3,454.6	3,456.4	0.00	0.00	
12,200.0	0.43	239.54	11,320.7	112.2	-3,455.2	3,457.0	0.00	0.00	
12,276.3	0.43	239.54	11,397.0	111.9	-3,455.7	3,457.5	0.00	0.00	UPPER SEGO
12,300.0	0.43	239.54	11,420.7	111.8	-3,455.8	3,457.7	0.00	0.00	
12,400.0	0.43	239.54	11,520.7	111.4	-3,456.5	3,458.3	0.00	0.00	
12,500.0	0.43	239.54	11,620.7	111.1	-3,457.1	3,458.9	0.00	0.00	
12,600.0	0.43	239.54	11,720.7	110.7	-3,457.8	3,459.5	0.00	0.00	
12,700.0	0.43	239.54	11,820.7	110.3	-3,458.4	3,460.2	0.00	0.00	
12,800.0	0.43	239.54	11,920.7	109.9	-3,459.1	3,460.8	0.00	0.00	
12,900.0	0.43	239.54	12,020.7	109.5	-3,459.7	3,461.4	0.00	0.00	
13,000.0	0.43	239.54	12,120.7	109.2	-3,460.3	3,462.1	0.00	0.00	Permit TD @ 13,000' MD

Cathedral Energy Services

Planning Report

Database:	USA EDM 5000 Multi Users DB	Local Co-ordinate Reference:	Well UWF06B-04 H04 596
Company:	EnCana Oil & Gas (USA) Inc	TVD Reference:	KBE @ 8293.0ft (Original Well Elev)
Project:	North Piceance	MD Reference:	KBE @ 8293.0ft (Original Well Elev)
Site:	H04 Pad	North Reference:	True
Well:	UWF06B-04 H04 596	Survey Calculation Method:	Minimum Curvature
Wellbore:	DD		
Design:	Plan #1		

Targets									
Target Name									
- hit/miss target	Dip Angle	Dip Dir.	TVD	+N/-S	+E/-W	Northing	Easting	Latitude	Longitude
- Shape	(°)	(°)	(ft)	(ft)	(ft)	(ft)	(ft)		
UWF06B-04 PBHL	0.00	0.00	10,689.0	114.6	-3,451.1	1,671,430.03	2,246,206.53	39° 38' 46.93 N	108° 10' 38.10 W
- plan hits target center									
- Rectangle (sides W30.0 H50.0 D0.0)									
UWF06B-04 TGT	0.00	0.00	7,135.0	124.6	-3,434.1	1,671,439.55	2,246,223.86	39° 38' 47.03 N	108° 10' 37.88 W
- plan hits target center									
- Point									

Formations						
Measured Depth	Vertical Depth	Name	Lithology	Dip	Dip Direction	
(ft)	(ft)			(°)	(°)	
1,106.7	1,073.0	A GROOVE				
1,288.0	1,231.0	B GROOVE				
1,334.3	1,271.0	B GROOVE BASE				
2,251.8	2,064.0	GARDEN GULCH				
3,485.2	3,130.0	WASATCH FM				
5,812.0	5,141.0	WASATCH G				
8,014.2	7,135.0	WILLIAMS FORK				
11,568.3	10,689.0	ROLLINS				
11,804.3	10,925.0	COZZETTE				
11,972.3	11,093.0	CORCORAN				
12,276.3	11,397.0	UPPER SEGO				

Plan Annotations				
Measured Depth	Vertical Depth	Local Coordinates		Comment
(ft)	(ft)	+N/-S (ft)	+E/-W (ft)	
200.0	200.0	0.0	0.0	KOP @ 200'
1,206.6	1,160.7	9.4	-259.0	EOB @ Inc. = 30.2°
7,007.6	6,174.3	115.2	-3,175.1	Start 3° Drop
8,014.2	7,135.0	124.6	-3,434.1	EOD @ Inc. = 0°
11,568.3	10,689.0	114.6	-3,451.1	TD @ 11,568.3' MD
13,000.0	12,120.7	109.2	-3,460.3	Permit TD @ 13,000' MD