

# PETROLEUM DEVELOPMENT CORP Weld County CO

Well Name: **Riteaway 32M-243**

Surface Location: Riteaway NW-32 Pad Sec.32-T5N-R67W  
North American Datum 1983 , US State Plane 1983 , Colorado Northern Zone

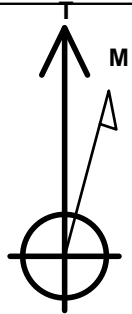
Ground Elevation: 4795.0

+N/-S	+E/-W	Northing	Easting	Latitude	Longitude	Slot
0.0	0.0	1375449.59	3161601.77	40.362560	-104.920080	

Original Well Elev WELL @ 4810.0ft (Original Well Elev)

## WELLBORE TARGET DETAILS

Name	TVD	+N/-S	+E/-W	Shape
HARDLINE BHL 460'FSL	1.0	-4462.7	372.0	Polygon
HARDLINES SHL 460'FNL & 2166'FWL	1.0	-143.0	372.0	Polygon
SECTION LINE 317'N OF SHL	1.0	317.0	372.0	Polygon
BHL 500'FSL, 2129'FWL	6759.0	-4422.7	306.6	Point



Azimuths to True North  
Magnetic North: 8.84°

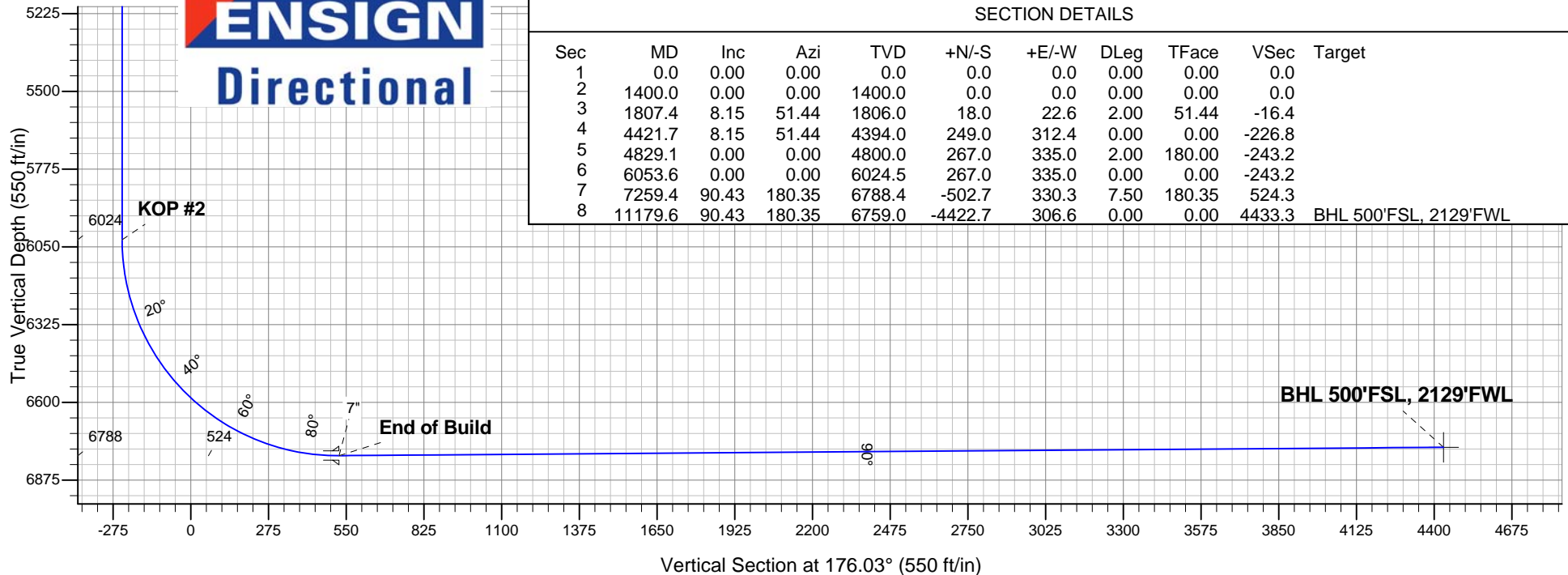
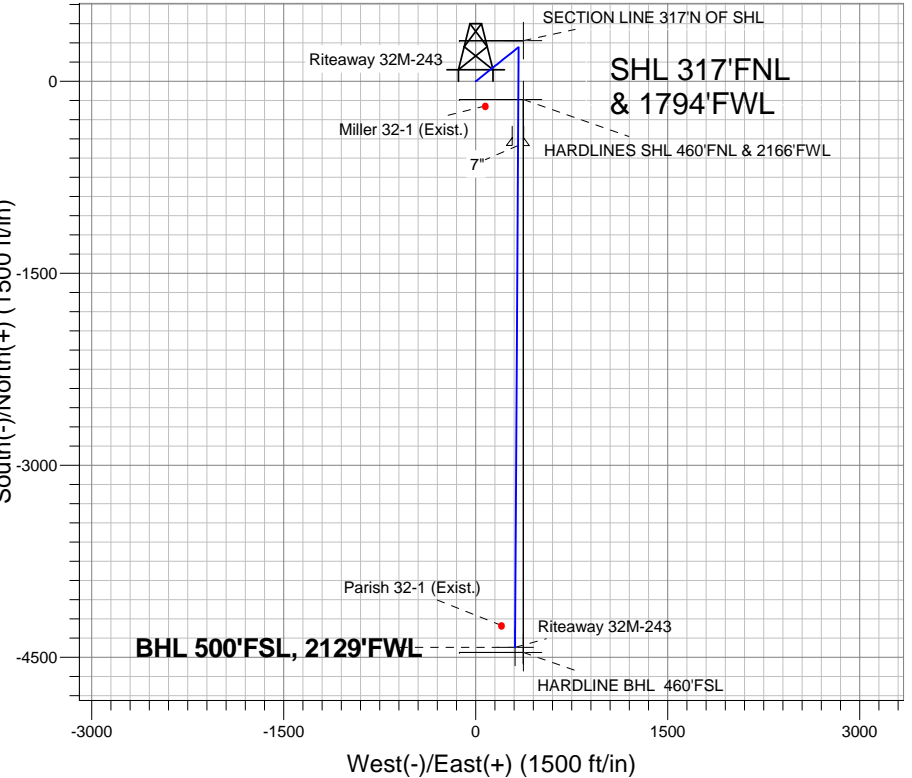
Magnetic Field  
Strength: 53012.7nT  
Dip Angle: 66.97°  
Date: 3/27/2012  
Model: IGRF2010

Riteaway NW-32 Pad Sec.32-T5N-R67W  
Riteaway 32M-243  
Plan #1 (3-27-12)  
16:15, April 10 2012

## ANNOTATIONS

TVD	MD	Annotation
1400.0	1400.0	KOP #1
6024.5	6053.6	KOP #2
6788.4	7259.4	End of Build

South(-)/North(+) (1500 ft/in)



## SECTION DETAILS

Sec	MD	Inc	Azi	TVD	+N/-S	+E/-W	DLeg	TFace	VSec	Target
1	0.0	0.00	0.00	0.0	0.0	0.0	0.00	0.00	0.0	
2	1400.0	0.00	0.00	1400.0	0.0	0.0	0.00	0.00	0.0	
3	1807.4	8.15	51.44	1806.0	18.0	22.6	2.00	51.44	-16.4	
4	4421.7	8.15	51.44	4394.0	249.0	312.4	0.00	0.00	-226.8	
5	4829.1	0.00	0.00	4800.0	267.0	335.0	2.00	180.00	-243.2	
6	6053.6	0.00	0.00	6024.5	267.0	335.0	0.00	0.00	-243.2	
7	7259.4	90.43	180.35	6788.4	-502.7	330.3	7.50	180.35	524.3	
8	11179.6	90.43	180.35	6759.0	-4422.7	306.6	0.00	0.00	4433.3	BHL 500'FSL, 2129'FWL