

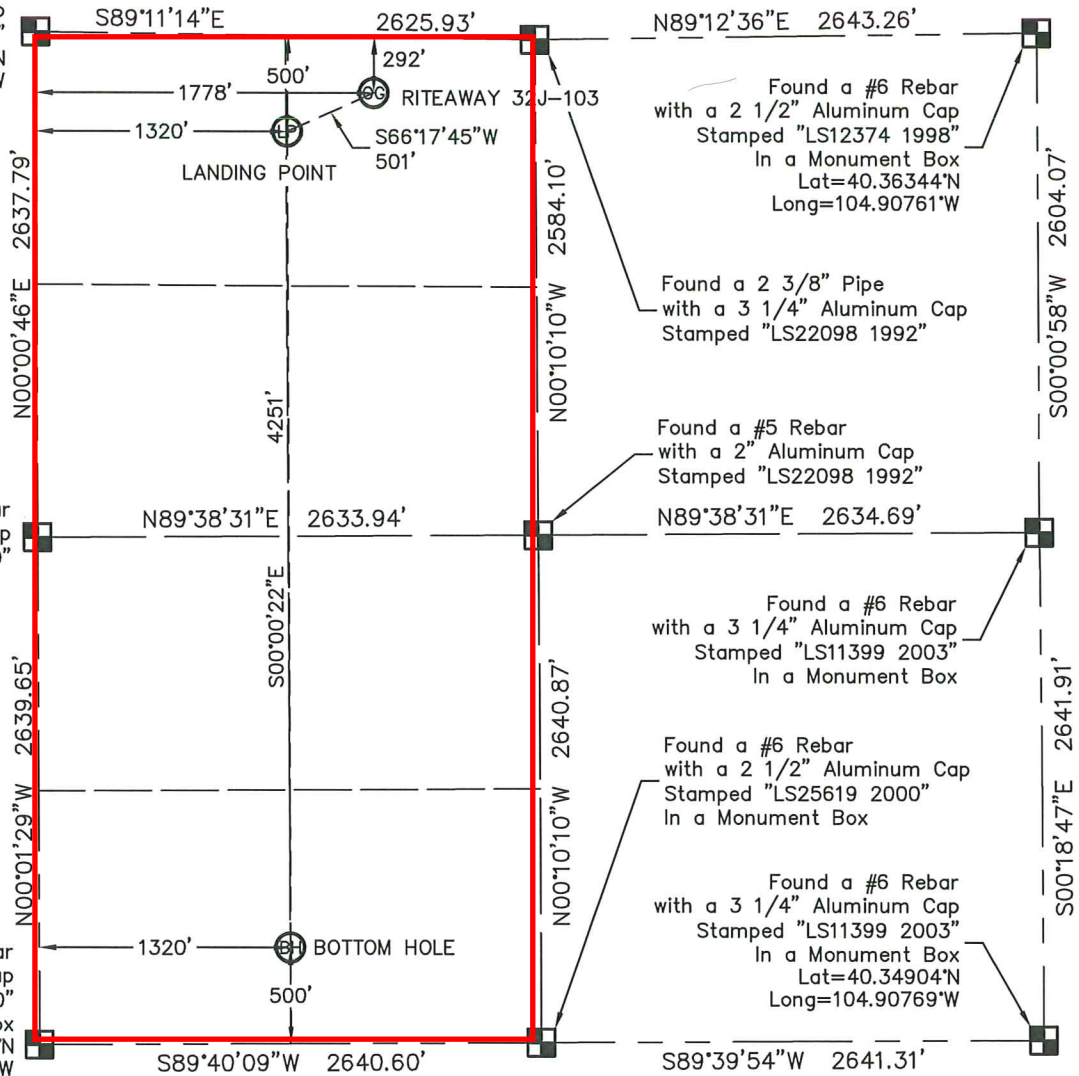
## WELL LOCATION CERTIFICATE

RITEAWAY 32J-103

THIS MAP DOES NOT REPRESENT A BOUNDARY SURVEY

SECTION: 32  
TOWNSHIP: 5N  
RANGE: 67W

Found a #6 Rebar  
with a 3 1/4" Aluminum Cap  
Stamped "LS22098 2003"  
Lat=40.36353°N  
Long=104.92651°W



In accordance with a request from MAC NEUMANN with PETROLEUM DEVELOPMENT CORPORATION

King Surveyors Inc. has determined the surface location of the RITEAWAY 32J-103 to be 292' from the NORTH line and 1778' from the WEST line, the landing point to be 500' from the NORTH line and 1320' from the WEST line and the bottom hole to be 500' from the SOUTH line and 1320' from the WEST line, as measured at right angles, from the section lines of Section 32, Township 5 North, Range 67 West of the Sixth Principal Meridian, County of Weld, State of Colorado.

I hereby state that this Well Location Certificate was prepared by me, or under my direct supervision, that the fieldwork was completed on 3-1-2012, for and on behalf of PETROLEUM DEVELOPMENT CORPORATION, that this is not a Land Survey Plat or an Improvement Survey Plat, and that it is not to be relied upon for establishment of fence, building, or other future improvement lines.

SURFACE LOCATION  
LATITUDE: 40.36263°N  
LONGITUDE: 104.92014°W  
PDOP: 1.7  
ELEV: 4795'  
1/4, 1/4: NE1/4 NW1/4  
NEAREST PROPERTY LINE: 292' NORTH

LANDING POINT  
LATITUDE: 40.36209°N  
LONGITUDE: 104.92179°W  
BOTTOM HOLE  
LATITUDE: 40.35042°N  
LONGITUDE: 104.92189°W

## NOTES:

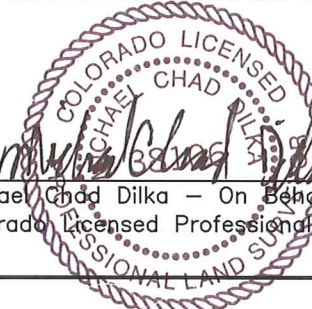
- 1) Bearings shown are Grid Bearings of the Colorado State Plane Coordinate System, North Zone, North American Datum 1983/2007. The lineal dimensions as contained herein are based upon the "U.S. Survey Foot."
- 2) Ground elevations are based on an observed GPS elevation (NAVD 1988 DATUM).
- 3) NEAREST EXISTING WELL: MILLER 32-1 237' SOUTHEAST
- 4) IMPROVEMENTS: See LOCATION DRAWING for all visible improvements within 400' of the disturbed area.
- 5) SURFACE USE: CROP FIELD & PROD. EQUIP.
- 6) FIELD OPERATOR: BEN ADSIT

## NOTE

According to Colorado law, you must commence any legal action based upon any defect in this W.L.C. within three years after you discover such defect. In no event, may any action based upon any defect in this survey be commenced more than ten years after the date of the certificate shown hereon. (13-80-105 C.R.S.)

## LEGEND

- = FOUND ALIQUOT MONUMENT AS DESCRIBED
- = CALCULATED POSITION
- = SET ALIQUOT MONUMENT AS DESCRIBED



Michael Chad Dilka - On Behalf Of King Surveyors, Inc.  
Colorado Licensed Professional Land Surveyor #38106

PROJECT#: 2010482