

WELL LOCATION CERTIFICATE

RITEAWAY 32J-103

THIS MAP DOES NOT REPRESENT A BOUNDARY SURVEY

SECTION: 32
TOWNSHIP: 5N
RANGE: 67W

Found a #6 Rebar
with a 3 1/4" Aluminum Cap
Stamped "LS22098 2003"
Lat=40.36353°N
Long=104.92651°W

Found a #6 Rebar
with a 2 1/2" Aluminum Cap
Stamped "LS12374 1998"
In a Monument Box
Lat=40.36344°N
Long=104.90761°W

Found a 2 3/8" Pipe
with a 3 1/4" Aluminum Cap
Stamped "LS22098 1992"

Found a #5 Rebar
with a 2" Aluminum Cap
Stamped "LS22098 1992"

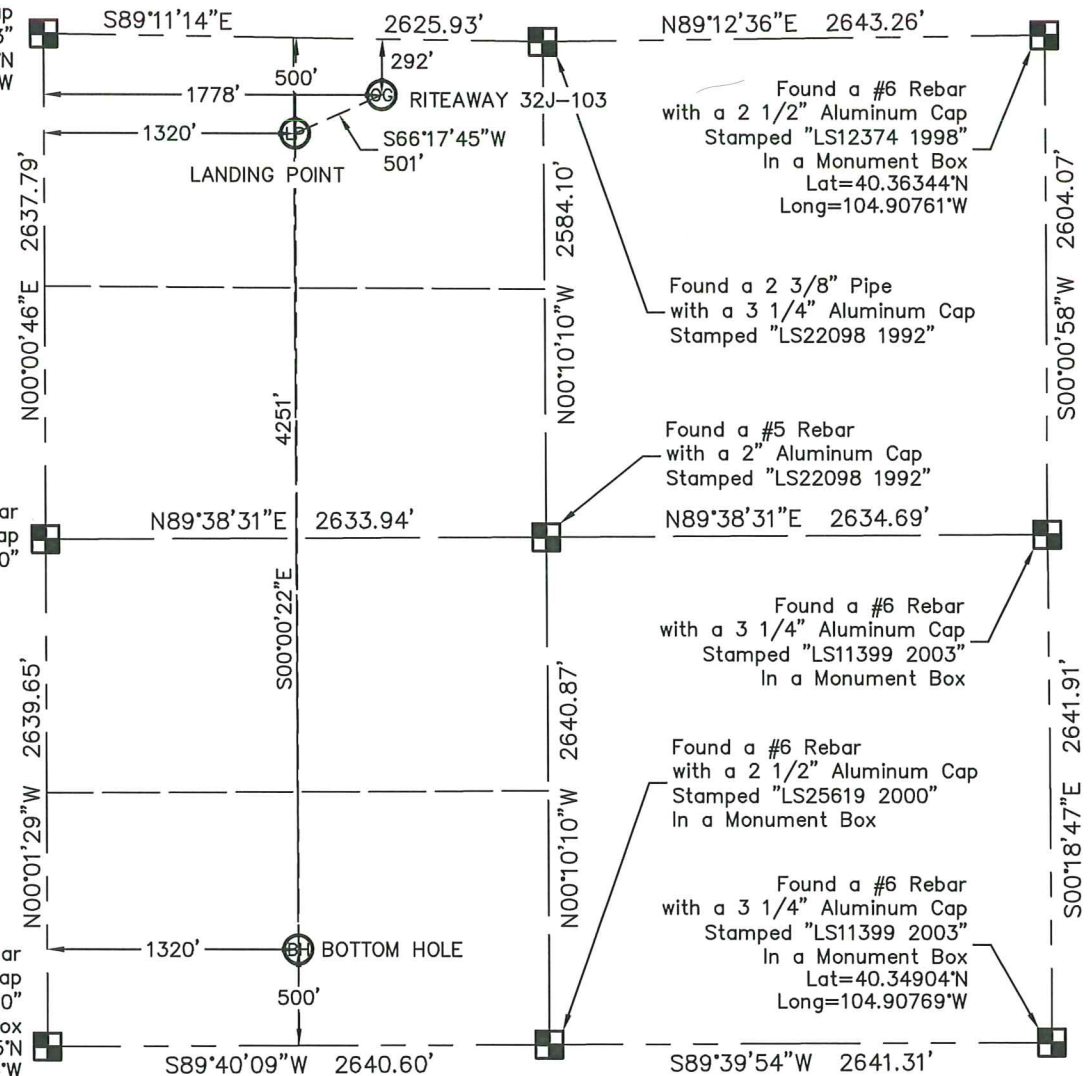
Found a #6 Rebar
with a 3 1/4" Aluminum Cap
Stamped "LS11399 2003"
In a Monument Box

Found a #6 Rebar
with a 2 1/2" Aluminum Cap
Stamped "LS25619 2000"
In a Monument Box

Found a #6 Rebar
with a 3 1/4" Aluminum Cap
Stamped "LS11399 2003"
In a Monument Box
Lat=40.34904°N
Long=104.90769°W

Found a #6 Rebar
with a 3 1/4" Aluminum Cap
Stamped "LS38106 2010"

Found a #6 Rebar
with a 2 1/2" Aluminum Cap
Stamped "LS30462 2000"
In a Monument Box
Lat=40.34905°N
Long=104.92663°W



In accordance with a request from MAC NEUMANN with PETROLEUM DEVELOPMENT CORPORATION

King Surveyors Inc. has determined the surface location of the RITEAWAY 32J-103 to be 292' from the NORTH line and 1778' from the WEST line, the landing point to be 500' from the NORTH line and 1320' from the WEST line and the bottom hole to be 500' from the SOUTH line and 1320' from the WEST line, as measured at right angles, from the section lines of Section 32, Township 5 North, Range 67 West of the Sixth Principal Meridian, County of Weld, State of Colorado.

I hereby state that this Well Location Certificate was prepared by me, or under my direct supervision, that the fieldwork was completed on 3-1-2012, for and on behalf of PETROLEUM DEVELOPMENT CORPORATION, that this is not a Land Survey Plat or an Improvement Survey Plat, and that it is not to be relied upon for establishment of fence, building, or other future improvement lines.

SURFACE LOCATION
LATITUDE: 40.36263°N
LONGITUDE: 104.92014°W
PDOP: 1.7
ELEV: 4795'
1/4,1/4: NE1/4 NW1/4
NEAREST PROPERTY LINE: 292' NORTH

LANDING POINT
LATITUDE: 40.36209°N
LONGITUDE: 104.92179°W
BOTTOM HOLE
LATITUDE: 40.35042°N
LONGITUDE: 104.92189°W

NOTES:

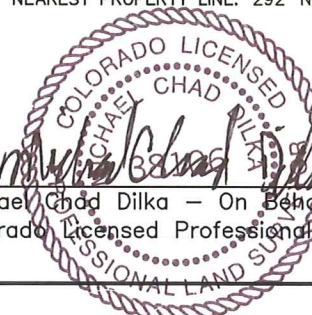
- 1) Bearings shown are Grid Bearings of the Colorado State Plane Coordinate System, North Zone, North American Datum 1983/2007. The lineal dimensions as contained herein are based upon the "U.S. Survey Foot."
- 2) Ground elevations are based on an observed GPS elevation (NAVD 1988 DATUM).
- 3) NEAREST EXISTING WELL: MILLER 32-1 237' SOUTHEAST
- 4) IMPROVEMENTS: See LOCATION DRAWING for all visible improvements within 400' of the disturbed area.
- 5) SURFACE USE: CROP FIELD & PROD. EQUIP.
- 6) FIELD OPERATOR: BEN ADSIT

NOTE

According to Colorado law, you must commence any legal action based upon any defect in this W.L.C. within three years after you discover such defect. In no event, may any action based upon any defect in this survey be commenced more than ten years after the date of the certificate shown hereon. (13-80-105 C.R.S.)

LEGEND

- = FOUND ALIQUOT MONUMENT AS DESCRIBED
- = CALCULATED POSITION
- = SET ALIQUOT MONUMENT AS DESCRIBED

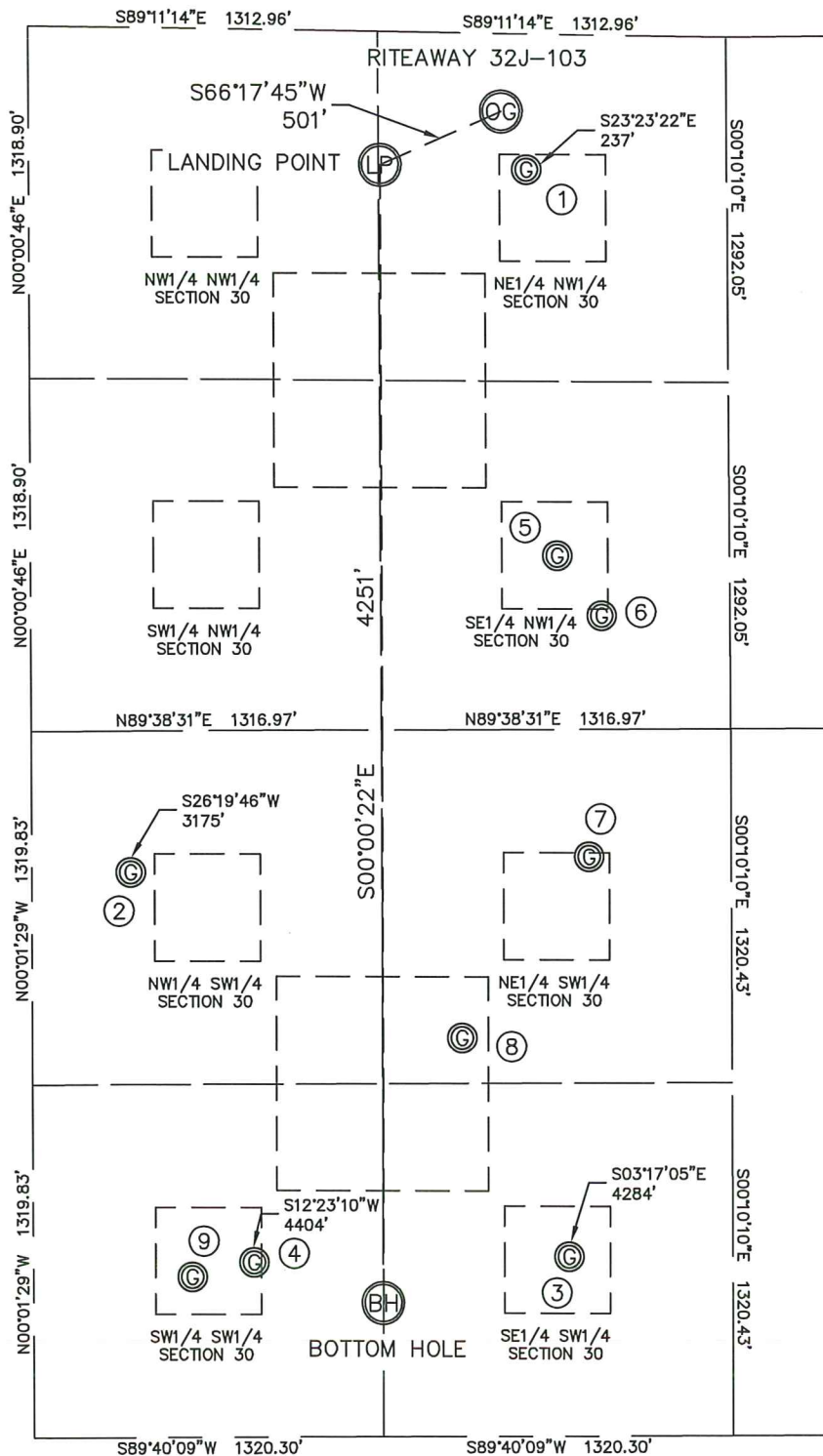


Michael Chad Dilka - On Behalf Of King Surveyors, Inc.
Colorado Licensed Professional Land Surveyor #38106

PROJECT#: 2010482

SITE SKETCH

RITEAWAY 32J-103

SECTION: 32
TOWNSHIP: 5N
RANGE: 67W

①

MILLER 32-1
NE1/4 NW1/4
S00°48'46"W 508' FNL
S89°59'14"E 1872' FWL
LAT-40.36203°N
LONG-104.91981°W
PDOP: 5.0
ELEV: 4794'

⑤

GETZ #1
(ABANDONED LOCATION
PER COGCC MAP)
SE1/4 NW1/4
1949' FNL (PER PLAT)
1983' FWL (PER PLAT)

②

RIEDER 32-1
NW1/4 SW1/4
N00°19'51"W 2112' FSL
N89°58'31"E 370' FWL
LAT-40.35485°N
LONG-104.92526°W
PDOP: 2.1
ELEV: 4839'

⑥

MILLER 22-32
(ABANDONED LOCATION
PER COGCC MAP)
SE1/4 NW1/4
2170' FNL (PER PLAT)
2150' FWL (PER PLAT)

③

PARISH 32-1
SE1/4 SW1/4
N00°19'51"W 671' FSL
N89°58'31"E 2023' FWL
LAT-40.35089°N
LONG-104.91936°W
PDOP: 3.0
ELEV: 4830'

⑦

RIEDER 23-32
(ABANDONED LOCATION
PER COGCC MAP)
NE1/4 SW1/4
2165' FSL (PER PLAT)
2100' FWL (PER PLAT)

④

PARISH 32-2
SW1/4 SW1/4
N00°19'51"W 654' FSL
N89°58'31"E 833' FWL
LAT-40.35084°N
LONG-104.92363°W
PDOP: 2.3
ELEV: 4850'

⑧

RIEDER 32B
(ABANDONED LOCATION
PER COGCC MAP)
NE1/4 SW1/4
1490' FSL (PER PLAT)
1620' FWL (PER PLAT)

⑨

NO. 1 PARISH
(ABANDONED LOCATION
PER COGCC MAP)
SW1/4 SW1/4
600' FSL (PER PLAT)
600' FWL (PER PLAT)

NOTE
BEARINGS AND DISTANCES AT EXISTING
WELLS ARE CALCULATED FROM THE
PROPOSED LOCATION TO THE EXISTING WELL.

