



Corporate Office

1775 Sherman Street, #3000
Denver, Colorado 80203
303.860.5800
www.petd.com

4/11/2012

Department of Natural Resources
Oil and Gas Conservation Commission
The Chancery Building
1120 Lincoln St., Suite 801
Denver, CO 80203

Re: **Rule 318Ae – Proposed Spacing Unit**
Riteaway 32J-103
Section 32 Township 5 North, Range 67 West
Weld County, Colorado

Dear Director,

Petroleum Development Corporation doing business as PDC Energy ("PDC") hereby certifies to the Director that PDC holds all minerals in the proposed 320 acre wellbore spacing unit consisting of the W2 of Section 32, Township 5N, Range 67W; therefore, no 30-day notice is needed to owners in the proposed wellbore spacing unit. This horizontal well location crosses existing unit boundaries and requires the formation of the proposed unit. PDC hereby requests the Director to approve the well.

If you should have any questions or concerns regarding this permit, please contact the undersigned at (303) 860-5800.

Sincerely,

A handwritten signature in blue ink, appearing to read "Liz Lindow".

Liz Lindow
Permit Analyst
PDC Energy

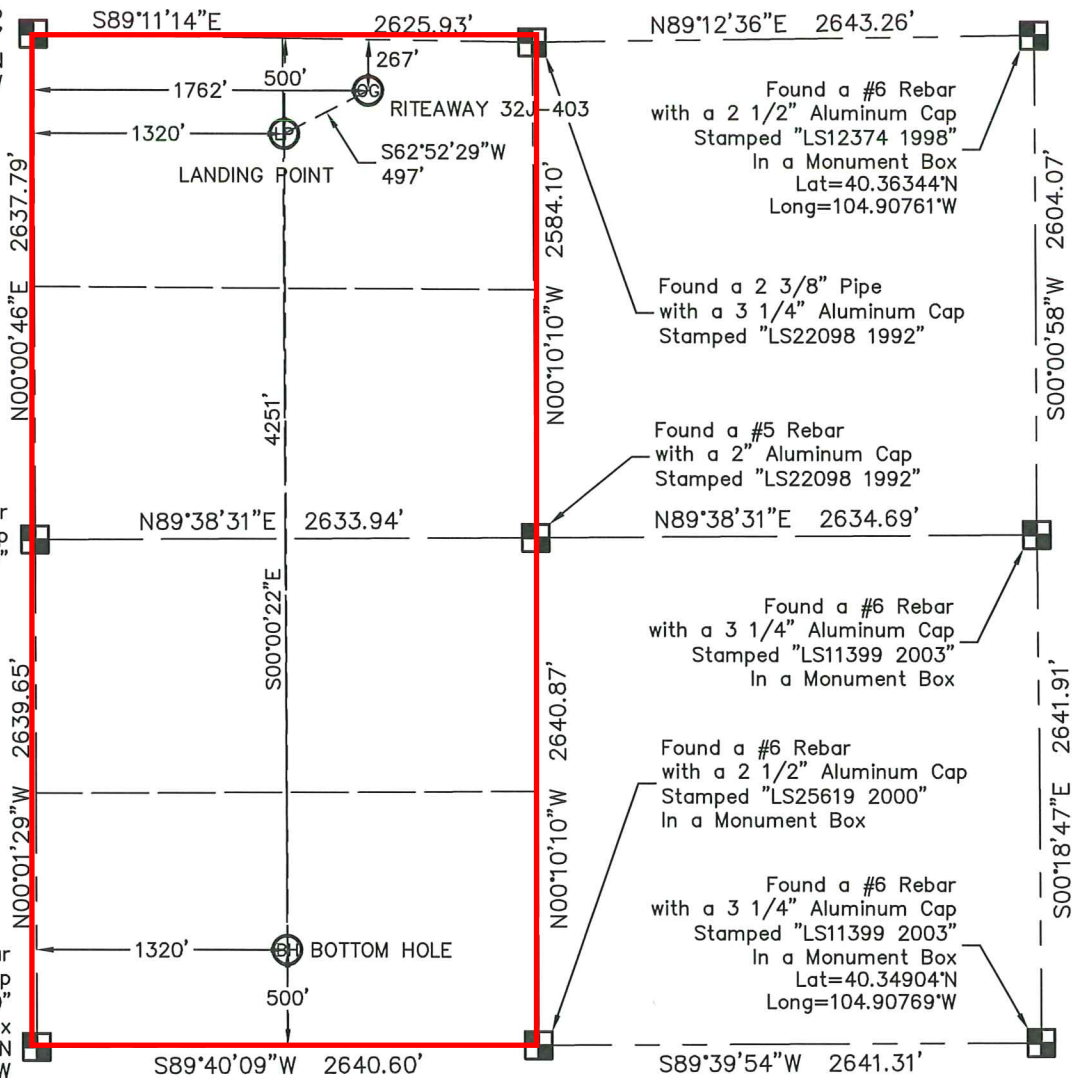
WELL LOCATION CERTIFICATE

RITEAWAY 32J-403

THIS MAP DOES NOT REPRESENT A BOUNDARY SURVEY

SECTION: 32
TOWNSHIP: 5N
RANGE: 67W

Found a #6 Rebar
with a 3 1/4" Aluminum Cap
Stamped "LS22098 2003"
Lat=40.36353°N
Long=104.92651°W



Found a #6 Rebar
with a 3 1/4" Aluminum Cap
Stamped "LS38106 2010"

Found a #6 Rebar
with a 2 1/2" Aluminum Cap
Stamped "LS30462 2000"
In a Monument Box
Lat=40.34905°N
Long=104.92663°W

Found a #6 Rebar
with a 2 1/2" Aluminum Cap
Stamped "LS12374 1998"
In a Monument Box
Lat=40.36344°N
Long=104.90761°W

Found a 2 3/8" Pipe
with a 3 1/4" Aluminum Cap
Stamped "LS22098 1992"

Found a #5 Rebar
with a 2" Aluminum Cap
Stamped "LS22098 1992"

Found a #6 Rebar
with a 3 1/4" Aluminum Cap
Stamped "LS11399 2003"
In a Monument Box

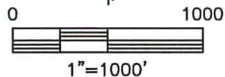
Found a #6 Rebar
with a 2 1/2" Aluminum Cap
Stamped "LS25619 2000"
In a Monument Box

Found a #6 Rebar
with a 3 1/4" Aluminum Cap
Stamped "LS11399 2003"
In a Monument Box
Lat=40.34904°N
Long=104.90769°W

In accordance with a request from MAC NEUMANN with PETROLEUM DEVELOPMENT CORPORATION

King Surveyors Inc. has determined the surface location of the RITEAWAY 32J-403 to be 267' from the NORTH line and 1762' from the WEST line, the landing point to be 500' from the NORTH line and 1320' from the WEST line and the bottom hole to be 500' from the SOUTH line and 1320' from the WEST line, as measured at right angles, from the section lines of Section 32, Township 5 North, Range 67 West of the Sixth Principal Meridian, County of Weld, State of Colorado.

I hereby state that this Well Location Certificate was prepared by me, or under my direct supervision, that the fieldwork was completed on 3-1-2012, for and on behalf of PETROLEUM DEVELOPMENT CORPORATION, that this is not a Land Survey Plat or an Improvement Survey Plat, and that it is not to be relied upon for establishment of fence, building, or other future improvement lines.



NOTES:

- 1) Bearings shown are Grid Bearings of the Colorado State Plane Coordinate System, North Zone, North American Datum 1983/2007. The lineal dimensions as contained herein are based upon the "U.S. Survey Foot."
- 2) Ground elevations are based on an observed GPS elevation (NAVD 1988 DATUM).
- 3) NEAREST EXISTING WELL: MILLER 32-1 267' SOUTHEAST
- 4) IMPROVEMENTS: See LOCATION DRAWING for all visible improvements within 400' of the disturbed area.
- 5) SURFACE USE: CROP FIELD & PROD. EQUIP.
- 6) FIELD OPERATOR: BEN ADSIT

NOTE

According to Colorado law, you must commence any legal action based upon any defect in this W.L.C. within three years after you discover such defect. In no event, may any action based upon any defect in this survey be commenced more than ten years after the date of the certificate shown hereon. (13-80-105 C.R.S.)

LEGEND

- = FOUND ALIQUOT MONUMENT AS DESCRIBED
- = CALCULATED POSITION
- = SET ALIQUOT MONUMENT AS DESCRIBED

SURFACE LOCATION
LATITUDE: 40.36270°N
LONGITUDE: 104.92020°W
PDOP: 2.5
ELEV: 4794'
1/4, 1/4: NE1/4 NW1/4
NEAREST PROPERTY LINE: 267' NORTH

LANDING POINT
LATITUDE: 40.36209°N
LONGITUDE: 104.92179°W

BOTTOM HOLE
LATITUDE: 40.35042°N
LONGITUDE: 104.92189°W

Michael Chad Dilka - On Behalf Of King Surveyors, Inc.
Colorado Licensed Professional Land Surveyor #38106

PROJECT#: 2010482