

PETROLEUM DEVELOPMENT CORP Weld County CO

Well Name: **Riteaway 32E-323**

Surface Location: Riteaway NW-32 Pad Sec.32-T5N-R67W
North American Datum 1983 , US State Plane 1983 , Colorado Northern Zone

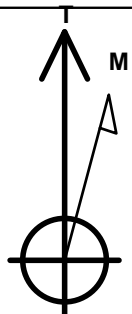
Ground Elevation: 4794.0

+N/-S	+E/-W	Northing	Easting	Latitude	Longitude	Slot
0.0	0.0	1375525.78	3161553.90	40.362770	-104.920250	

Original Well Elev WELL @ 4809.0ft (Original Well Elev)

WELLBORE TARGET DETAILS

Name	TVD	+N/-S	+E/-W	Shape
HARDLINE BHL 460'FSL, 460'FWL	1.0	-4539.2	-1316.6	Polygon
HARDLINE SHL 460'FNL	1.0	-218.0	-1286.0	Polygon
SECTION LINE 242'N OF SHL	1.0	242.0	-1286.0	Polygon
BHL 500'FSL, 500'FWL	6830.0	-4499.2	-1276.6	Point



Azimuths to True North
Magnetic North: 8.84°

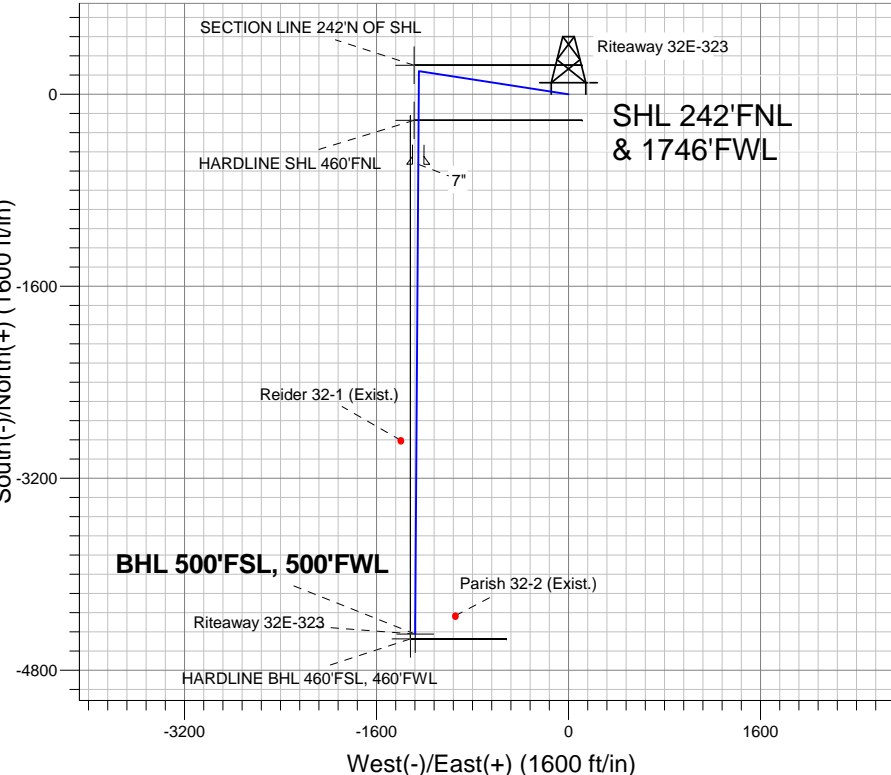
Magnetic Field
Strength: 53013.1srT
Dip Angle: 66.97°
Date: 3/26/2012
Model: IGRF2010

Riteaway NW-32 Pad Sec.32-T5N-R67W
Riteaway 32E-323
Plan #1 (3-26-12)
14:44, April 10 2012

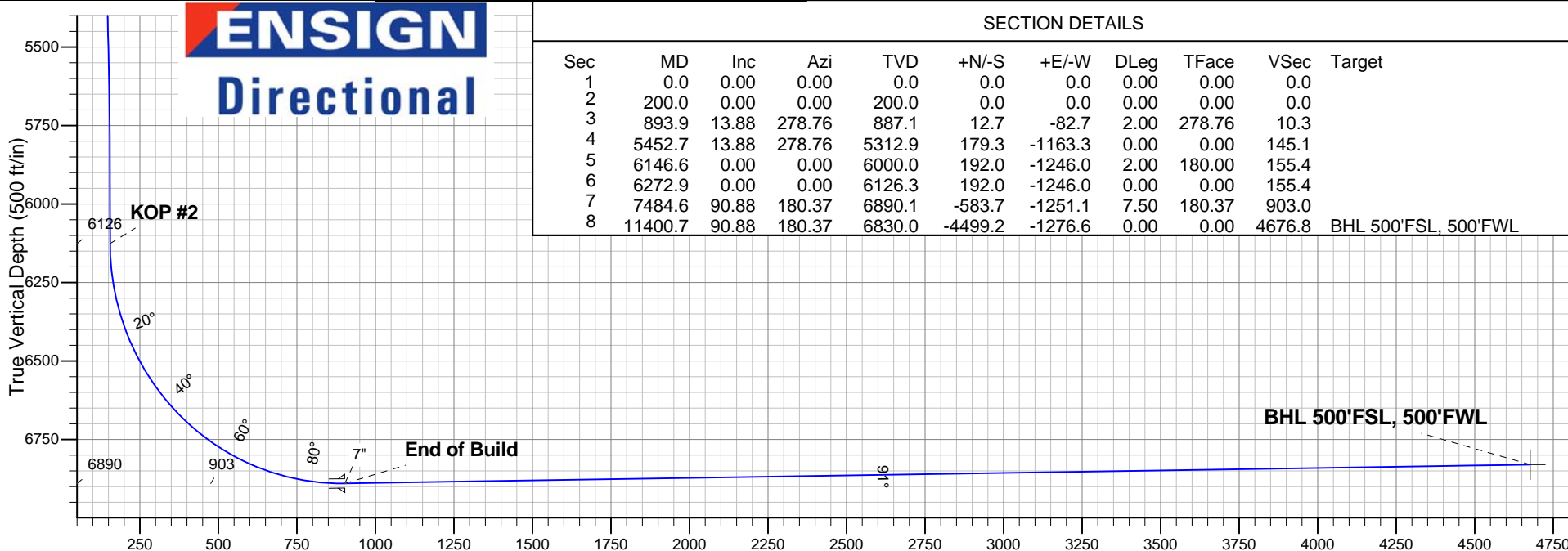
ANNOTATIONS

TVD	MD	Annotation
200.0	200.0	KOP #1
6126.3	6272.9	KOP #2
6890.1	7484.6	End of Build

South(-)/North(+) (1600 ft/in)



ENSIGN
Directional



SECTION DETAILS

Sec	MD	Inc	Azi	TVD	+N/-S	+E/-W	DLeg	TFace	VSec	Target
1	0.0	0.00	0.00	0.0	0.0	0.0	0.00	0.00	0.0	
2	200.0	0.00	0.00	200.0	0.0	0.0	0.00	0.00	0.0	
3	893.9	13.88	278.76	887.1	12.7	-82.7	2.00	278.76	10.3	
4	5452.7	13.88	278.76	5312.9	179.3	-1163.3	0.00	0.00	145.1	
5	6146.6	0.00	0.00	6000.0	192.0	-1246.0	2.00	180.00	155.4	
6	6272.9	0.00	0.00	6126.3	192.0	-1246.0	0.00	0.00	155.4	
7	7484.6	90.88	180.37	6890.1	-583.7	-1251.1	7.50	180.37	903.0	
8	11400.7	90.88	180.37	6830.0	-4499.2	-1276.6	0.00	0.00	4676.8	BHL 500'FSL, 500'FWL

Vertical Section at 195.84° (500 ft/in)