

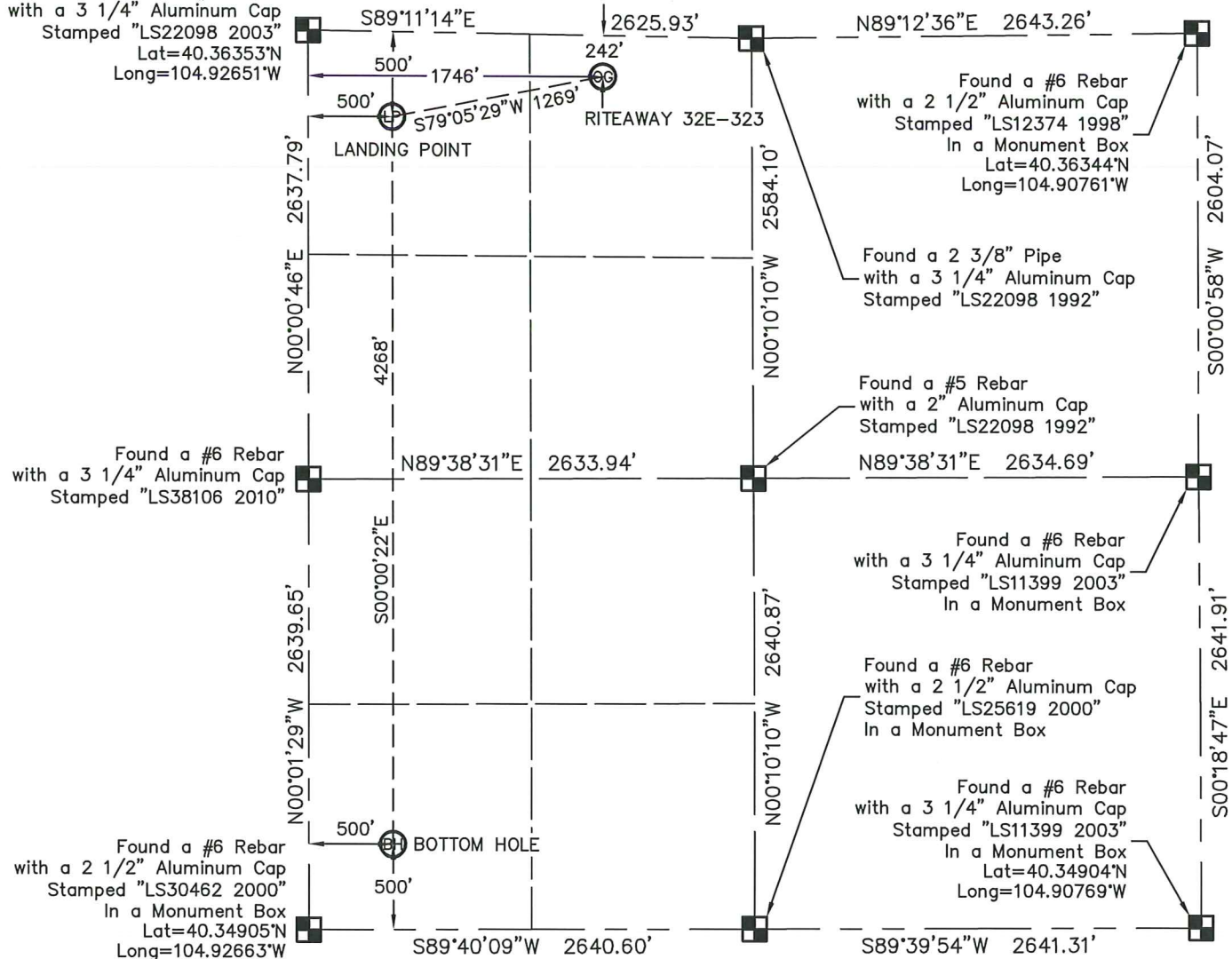
## WELL LOCATION CERTIFICATE

RITEAWAY 32E-323

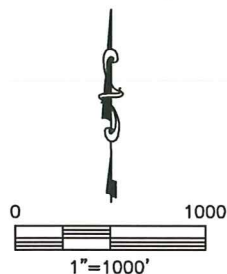
THIS MAP DOES NOT REPRESENT A BOUNDARY SURVEY

SECTION: 32  
TOWNSHIP: 5N  
RANGE: 67W

Found a #6 Rebar  
with a 3 1/4" Aluminum Cap  
Stamped "LS22098 2003"  
Lat=40.36353°N  
Long=104.92651°W



Found a #6 Rebar  
with a 2 1/2" Aluminum Cap  
Stamped "LS30462 2000"  
In a Monument Box  
Lat=40.34905°N  
Long=104.92663°W



In accordance with a request from MAC NEUMANN with PETROLEUM DEVELOPMENT CORPORATION King Surveyors Inc. has determined the surface location of the RITEAWAY 32E-323 to be 242' from the NORTH line and 1746' from the WEST line, the landing point to be 500' from the NORTH line and 500' from the WEST line and the bottom hole to be 500' from the SOUTH line and 500' from the WEST line, as measured at right angles, from the section lines of Section 32, Township 5 North, Range 67 West of the Sixth Principal Meridian, County of Weld, State of Colorado.

I hereby state that this Well Location Certificate was prepared by me, or under my direct supervision, that the fieldwork was completed on 3-1-2012, for and on behalf of PETROLEUM DEVELOPMENT CORPORATION, that this is not a Land Survey Plat or an Improvement Survey Plat, and that it is not to be relied upon for establishment of fence, building, or other future improvement lines.

## NOTES:

- 1) Bearings shown are Grid Bearings of the Colorado State Plane Coordinate System, North Zone, North American Datum 1983/2007. The lined dimensions as contained herein are based upon the "U.S. Survey Foot."
- 2) Ground elevations are based on an observed GPS elevation (NAVD 1988 DATUM).
- 3) NEAREST EXISTING WELL: MILLER 32-1 296' SOUTHEAST
- 4) IMPROVEMENTS: See LOCATION DRAWING for all visible improvements within 400' of the disturbed area.
- 5) SURFACE USE: CROP FIELD & PROD. EQUIP.
- 6) FIELD OPERATOR: BEN ADSIT

**LEGEND**

- = FOUND ALIQUOT MONUMENT AS DESCRIBED
- = CALCULATED POSITION
- = SET ALIQUOT MONUMENT AS DESCRIBED

## NOTE

According to Colorado law, you must commence any legal action based upon any defect in this W.L.C. within three years after you discover such defect. In no event, may any action based upon any defect in this survey be commenced more than ten years after the date of the certificate shown hereon. (13-80-105 C.R.S.)

SURFACE LOCATION  
LATITUDE: 40.36277°N  
LONGITUDE: 104.92025°W  
PDOP: 1.5  
ELEV: 4794'  
1/4, 1/4: NE1/4 NW1/4  
NEAREST PROPERTY LINE: 242' NORTH

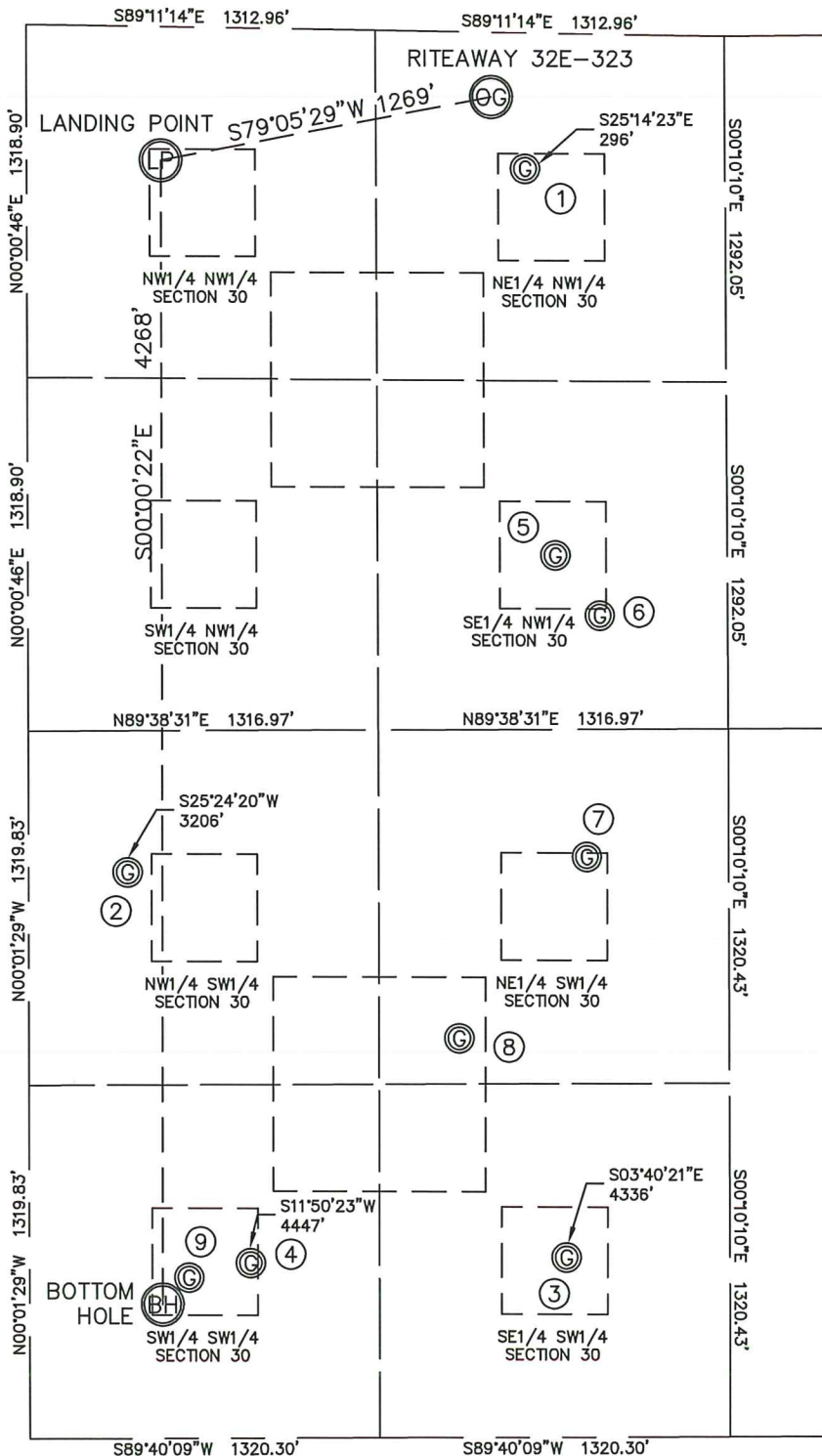
LANDING POINT  
LATITUDE: 40.36213°N  
LONGITUDE: 104.92473°W  
BOTTOM HOLE  
LATITUDE: 40.35042°N  
LONGITUDE: 104.92483°W

Michael Chad Dilka - On Behalf Of King Surveyors, Inc.  
Colorado Licensed Professional Land Surveyor #38106  
3/23/2012  
PROJECT#: 2010482

# SITE SKETCH

RITEAWAY 32E-323

SECTION: 32  
TOWNSHIP: 5N  
RANGE: 67W



①

MILLER 32-1  
NE1/4 NW1/4  
S00°48'46"W 508' FNL  
S89°59'14"E 1872' FWL  
LAT-40.36203N  
LONG-104.91981W  
PDOP:5.0  
ELEV: 4794'

⑤

GETZ #1  
(ABANDONED LOCATION  
PER COGCC MAP)  
SE1/4 NW1/4  
1949' FNL (PER PLAT)  
1983' FWL (PER PLAT)

②

RIEDER 32-1  
NW1/4 SW1/4  
N00°19'51"W 2112' FSL  
N89°58'31"E 370' FWL  
LAT-40.35485N  
LONG-104.92526W  
PDOP:2.1  
ELEV: 4839'

⑥

MILLER 22-32  
(ABANDONED LOCATION  
PER COGCC MAP)  
SE1/4 NW1/4  
2170' FNL (PER PLAT)  
2150' FWL (PER PLAT)

③

PARISH 32-1  
SE1/4 SW1/4  
N00°19'51"W 671' FSL  
N89°58'31"E 2023' FWL  
LAT-40.35089N  
LONG-104.91936W  
PDOP:3.0  
ELEV: 4830'

⑦

RIEDER 23-32  
(ABANDONED LOCATION  
PER COGCC MAP)  
NE1/4 SW1/4  
2165' FSL (PER PLAT)  
2100' FWL (PER PLAT)

④

PARISH 32-2  
SW1/4 SW1/4  
N00°19'51"W 654' FSL  
N89°58'31"E 833' FWL  
LAT-40.35084N  
LONG-104.92363W  
PDOP:2.3  
ELEV: 4850'

⑧

RIEDER 32B  
(ABANDONED LOCATION  
PER COGCC MAP)  
NE1/4 SW1/4  
1490' FSL (PER PLAT)  
1620' FWL (PER PLAT)

⑨

NO. 1 PARISH  
(ABANDONED LOCATION  
PER COGCC MAP)  
SW1/4 SW1/4  
600' FSL (PER PLAT)  
600' FWL (PER PLAT)

NOTE  
BEARINGS AND DISTANCES AT EXISTING  
WELLS ARE CALCULATED FROM THE  
PROPOSED LOCATION TO THE EXISTING WELL.

