

HALLIBURTON

Cementing Job Summary

The Road to Excellence Starts with Safety

Sold To #: 300721		Ship To #: 2847468		Quote #:		Sales Order #: 8088796	
Customer: WILLIAMS PRODUCTION RMT INC - EBUS				Customer Rep: Duniho, Al			
Well Name: RWF		Well #: 413-14		API/UWI #: 05-045-20149			
Field: Rulison		City (SAP): RIFLE		County/Parish: Garfield		State: Colorado	
Lat: N 39.527 deg. OR N 39 deg. 31 min. 38.532 secs.				Long: W 107.857 deg. OR W -108 deg. 8 min. 35.945 secs.			
Contractor: CYCLONE 30		Rig/Platform Name/Num: CYCLONE 30					
Job Purpose: Cement Surface Casing							
Well Type: Development Well				Job Type: Cement Surface Casing			
Sales Person: KOHL, KYLE				Srv Supervisor: MAGERS, MICHAEL		MBU ID Emp #: 339439	
Job Personnel							
HES Emp Name		Exp Hrs	Emp #	HES Emp Name		Exp Hrs	Emp #
BORSZICH, STEPHEN A		5	412388	MAGERS, MICHAEL Gerard		5	339439
YUTZY, BRIAN Matthew		5	478510				
ROSE, BENJAMIN Keith		5	487022				
Equipment							
HES Unit #	Distance-1 way	HES Unit #	Distance-1 way	HES Unit #	Distance-1 way	HES Unit #	Distance-1 way
10025118	60 mile	10783493	60 mile	10822007	60 mile	10872429	60 mile
11071463	60 mile	11259886	60 mile	11360883	60 mile		
Job Hours							
Date	On Location Hours	Operating Hours	Date	On Location Hours	Operating Hours	Date	On Location Hours
04/26/2011	2	0	4/27/2011	3	1.15		
TOTAL		Total is the sum of each column separately					
Job				Job Times			
Formation Name				Date	Time	Time Zone	
Formation Depth (MD)		Top	Bottom	Called Out	26 - Apr - 2011	16:15	MST
Form Type		BHST		On Location	26 - Apr - 2011	22:00	MST
Job depth MD		2145. ft	Job Depth TVD	2145. ft	Job Started	27 - Apr - 2011	01:44
Water Depth		Wk Ht Above Floor		3. ft	Job Completed	27 - Apr - 2011	02:58
Perforation Depth (MD)		From	To	Departed Loc	27 - Apr - 2011	04:00	MST
Well Data							
Description	New / Used	Max pressure psig	Size in	ID in	Weight lbm/ft	Thread	Grade
							Top MD ft
							Bottom MD ft
							Top TVD ft
							Bottom TVD ft
Sales/Rental/3 rd Party (HES)							
Description				Qty	Qty uom	Depth	Supplier
PLUG,CMTG,TOP,9 5/8,HWE,8.16 MIN/9.06 MA				1	EA		
Tools and Accessories							
Type	Size	Qty	Make	Depth	Type	Size	Qty
Guide Shoe					Packer		
Float Shoe					Bridge Plug		
Float Collar					Retainer		
Insert Float							
Stage Tool							
Miscellaneous Materials							
Gelling Agt		Conc		Surfactant		Conc	
Treatment Fld		Conc		Inhibitor		Conc	
Acid Type			Qty	Conc		%	
Sand Type			Size	Qty			

Fluid Data										
Stage/Plug #: 1										
Fluid #	Stage Type	Fluid Name	Qty	Qty uom	Mixing Density lbm/gal	Yield ft ³ /sk	Mix Fluid Gal/sk	Rate bbl/min	Total Mix Fluid Gal/sk	
1	Water Spacer		20.00	bbl	8.4	.0	.0	.0		
2	Lead Cement	VERSACEM (TM) SYSTEM (452010)	370.0	sacks	12.3	2.38	13.75		13.75	
3	Tail Cement	VERSACEM (TM) SYSTEM (452010)	160.0	sacks	12.8	2.11	11.76		11.76	
		11.76 Gal	FRESH WATER							
4	Displacement Fluid		164.00	bbl	8.4	.0	.0	.0		
Calculated Values		Pressures		Volumes						
Displacement	163.5	Shut In: Instant		Lost Returns	0	Cement Slurry	217	Pad		
Top Of Cement	SURFACE	5 Min		Cement Returns	40	Actual Displacement	163.5	Treatment		
Frac Gradient		15 Min		Spacers	20	Load and Breakdown		Total Job	400.5	
Rates										
Circulating	RIG	Mixing	8	Displacement	10/2	Avg. Job	9			
Cement Left In Pipe	Amount	46.9 ft	Reason	Shoe Joint						
Frac Ring # 1 @	ID	Frac ring # 2 @	ID	Frac Ring # 3 @	ID	Frac Ring # 4 @	ID			
The Information Stated Herein Is Correct				Customer Representative Signature						

HALLIBURTON

Cementing Job Log

The Road to Excellence Starts with Safety

Sold To #: 300721		Ship To #: 2847468		Quote #:		Sales Order #: 8088796	
Customer: WILLIAMS PRODUCTION RMT INC - EBUS				Customer Rep: Duniho, Al			
Well Name: RWF			Well #: 413-14		API/UWI #: 05-045-20149		
Field: Rulison		City (SAP): RIFLE		County/Parish: Garfield		State: Colorado	
Legal Description:							
Lat: N 39.527 deg. OR N 39 deg. 31 min. 38.532 secs.				Long: W 107.857 deg. OR W -108 deg. 8 min. 35.945 secs.			
Contractor: CYCLONE 30			Rig/Platform Name/Num: CYCLONE 30				
Job Purpose: Cement Surface Casing						Ticket Amount:	
Well Type: Development Well			Job Type: Cement Surface Casing				
Sales Person: KOHL, KYLE			Srvc Supervisor: MAGERS, MICHAEL			MBU ID Emp #: 339439	

Activity Description	Date/Time	Cht #	Rate bbl/min	Volume bbl		Pressure psig		Comments
				Stage	Total	Tubing	Casing	
Crew Leave Yard	04/26/2011 18:30							HES ALL PRESENT
Arrive At Loc	04/26/2011 22:00							RIG WAS PULLING DRILL PIPE WHEN HES ARRIVED/RIG CIRCULATED FOR 1 HR. WHILE CASERS RIGGED DOWN AND HES RIGGED UP AND PRIMED PUMPS/RIG CIRCULATED THROUGH PLUG CONTAINER/SWAGE NOT USED
Assessment Of Location Safety Meeting	04/26/2011 22:10							LOCATION IN GOOD CONDITION
Pre-Rig Up Safety Meeting	04/27/2011 00:20							JSA ON RIGGING UP
Rig-Up Equipment	04/27/2011 00:30							TD-2145 TP-2125 SJ-46.88 MW-10.5 CSG- 9 5/8" 32.3# H-40 OH-13.5" CONDUCTOR SET AT 67'
Safety Huddle	04/27/2011 01:30							RIG CREW AND HES ALL PRESENT
Start Job	04/27/2011 01:44							
Other	04/27/2011 01:45		2	2			60.0	FILL LINES
Pressure Test	04/27/2011 01:47		0.5	0.5			5019.0	PRESSURE TEST OK
Pump Spacer 1	04/27/2011 01:51		3	20			48.0	FRESH WATER
Pump Lead Cement	04/27/2011 02:01		8	156.8			384.0	VERSACEM 370 SKS 12.3 PPG 2.38 FT3/SK 13.75 GAL/SK

Sold To #: 300721

Ship To #: 2847468

Quote #:

Sales Order #:

8088796

SUMMIT Version: 7.20.130

Friday, April 29, 2011 10:35:00

HALLIBURTON

Cementing Job Log

Activity Description	Date/Time	Cht #	Rate bbl/ min	Volume bbl		Pressure psig		Comments
				Stage	Total	Tubing	Casing	
Pump Tail Cement	04/27/2011 02:20		8	60.1			325.0	VERSACEM 160 SKS 12.8 FT3/SK 11.75 GAL/SK
Shutdown	04/27/2011 02:27							PER COMPANY REP WASH UP ON TOP OF PLUG
Drop Plug	04/27/2011 02:32							PLUG AWAY NO PROBLEMS
Pump Displacement	04/27/2011 02:34		10	163.5			655.0	FRESH WATER
Slow Rate	04/27/2011 02:52		2	153			510.0	GOT 40 BBLS CEMENT TO SURFACE
Bump Plug	04/27/2011 02:55			163.5			453.0	BUMPED PLUG
Check Floats	04/27/2011 02:57			163.5			950.0	FLOATS HELD/GOT 1/2 BBL BACK INTO DISPLACEMENT TANK
End Job	04/27/2011 02:58							HAD GOOD CIRCULATION THROUGHOUT JOB/THANKS FOR USING HES AND THE CREW OF MIKE MAGERS

Sold To # : 300721

Ship To # :2847468

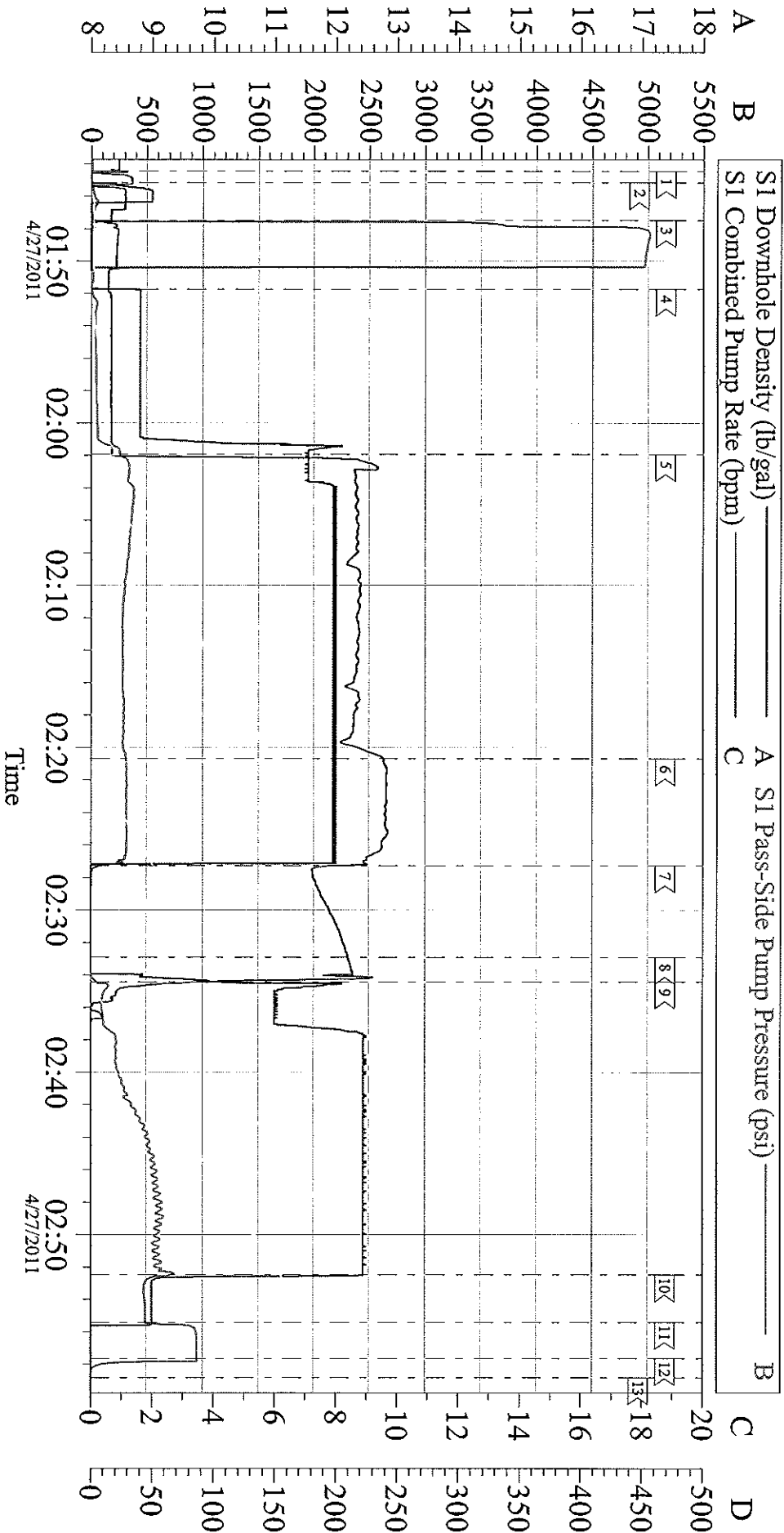
Quote # :

Sales Order # : 8088796

SUMMIT Version: 7.20.130

Friday, April 29, 2011 10:35:00

WILLIAMS CYCLONE 30 SURFACE



Local Event Log

1< START JOB	01:44:27	2< FILL LINES	01:45:09	3< PRESSURE TEST	01:47:30
4< PUMP SPACER	01:51:43	5< PUMP LEAD CEMENT	02:01:56	6< PUMP TAIL CEMENT	02:20:42
7< SHUT DOWN/WASH UP	02:27:16	8< DROP PLUG	02:32:55	9< PUMP FRSH WTR DISPLACEMENT	02:34:25
10< SLOW RATE	02:52:30	11< BUMP PLUG	02:55:26	12< CHECK FLOATS	02:57:40
13< END JOB	02:58:51				

Customer: WILLIAMS CYCLONE 30
 Well Description: RWF 413-14
 Company Rep: AL DUNIHOO

Job Date: 27-Apr-2011
 Job Type: SURFACE
 Cement Supervisor: MIKE MAGERS

Sales Order #: 8088796
 ADC Used: YES
 Elite #: 7 STEVE BORSZICH