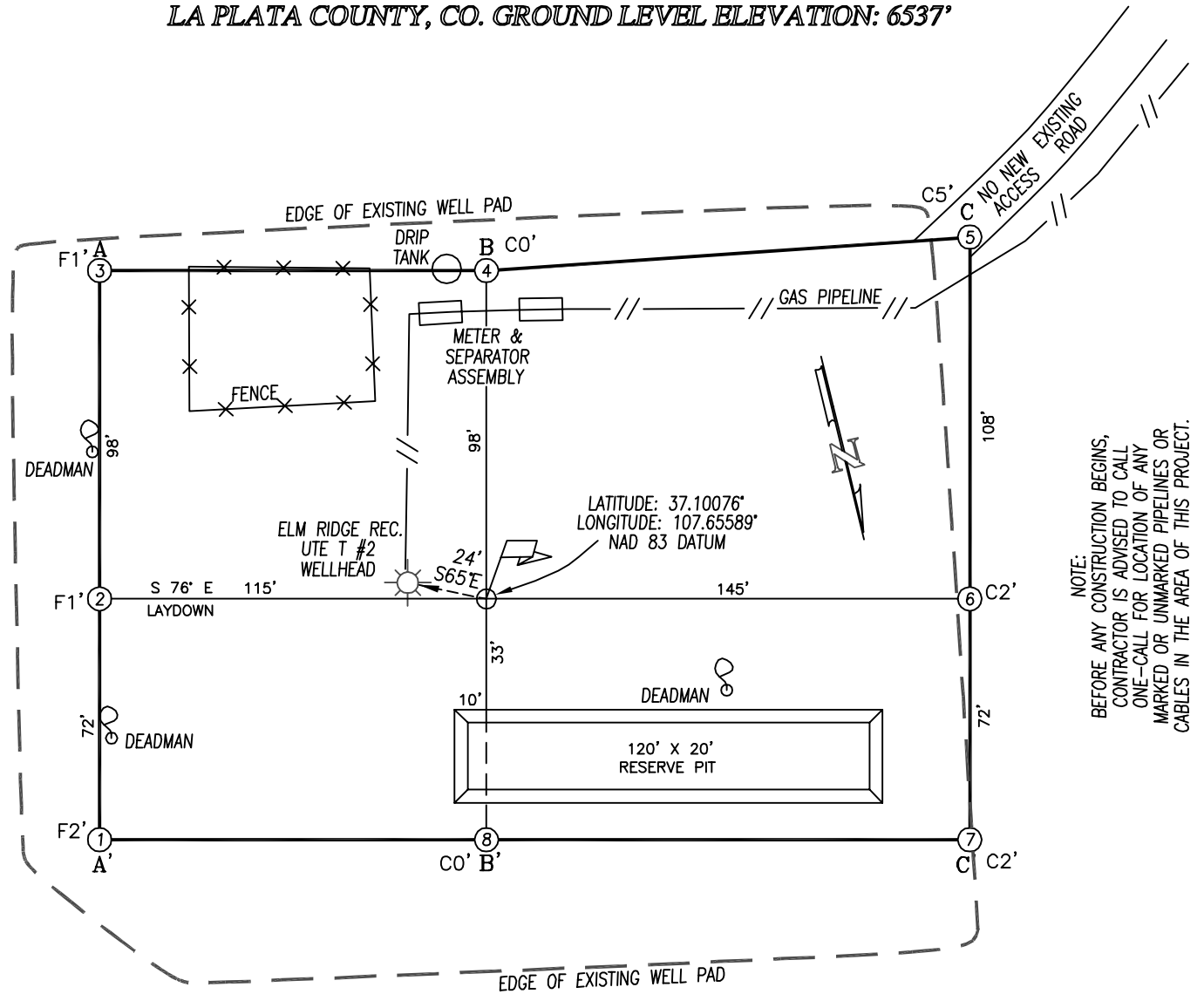


ELM RIDGE EXPLORATION COMPANY, LLC: IGE 114
 1415' FSL, 997' FWL, SECTION 18, T-33-N, R-7-W, N.M.P.M.,
 LA PLATA COUNTY, CO. GROUND LEVEL ELEVATION: 6537'



A-A' ELEV.

C/L

6547				
6537				
6527				

B-B'

6547				
6537				
6527				

C-C'

6547				
6537				
6527				

SCALE: 1" = 50'