

S 1/4 Cor. Sec. 33
1970 Brass Cap, 0.2' High
E-W Fenceline
Lat: 39.651225°
Long: 108.192233°

T5S, R96W, 6th P.M.

SE Cor. Sec. 33
1953 Brass Cap
0.2' High, Pile
of Stones, Fence
Lat: 39.651322°
Long: 108.164147°

Encana OIL & GAS (USA) INC.

Well location, N. PARACHUTE UWF07A-09 K04 596 (SURFACE LOCATION), located as shown in the NE 1/4 SW 1/4 of Section 4, T5S, R96W, 6th P.M., Garfield County, Colorado.

BASIS OF ELEVATION

BENCH MARK (H79) LOCATED IN THE NE 1/4 OF SECTION 35, T4S, R98W, 6th P.M. TAKEN FROM THE BULL FORK QUADRANGLE, COLORADO, 7.5 MINUTE SERIES (TOPO GRAPHICAL MAP) PUBLISHED BY THE UNITED STATES DEPARTMENT OF THE INTERIOR, GEOLOGICAL SURVEY. SAID ELEVATION IS MARKED AS BEING 8535 FEET.

BASIS OF BEARINGS

BASIS OF BEARINGS IS A G.P.S. OBSERVATION.

Sheet 1a of 9

LINE TABLE		
LINE	DIRECTION	LENGTH
L1	N89°35'21"E	195.03'
L2	S89°37'21"W	200.90'



CERTIFICATE

THIS IS TO CERTIFY THAT THE ABOVE PLAT WAS PREPARED AND LOCATION AS SHOWN WAS STAKED ON THE GROUND FROM FIELD NOTES OF ACTUAL SURVEYS MADE BY ME OR UNDER MY SUPERVISION AND THAT THE SAME ARE TRUE AND CORRECT TO THE BEST OF MY KNOWLEDGE AND BELIEF.

REGISTERED LAND SURVEYOR
REGISTRATION NO. 17492
STATE OF COLORADO
04-20-12

UINTAH ENGINEERING & LAND SURVEYING
85 SOUTH 200 EAST - VERNAL, UTAH 84078
(435) 789-0917

LEGEND:

- = 90° SYMBOL
- = PROPOSED WELL HEAD.
- = SECTION CORNERS LOCATED.
- = SECTION CORNERS RE-ESTABLISHED.
(Not Set on Ground.)

1917 Brass Cap
2.0' High
Lat: 39.636814°
Long: 108.174164°

PDOP = 1.2

NAD 83 (SURFACE LOCATION)	
LATITUDE	= 39°38'34.67" (39.642964)
LONGITUDE	= 108°10'30.05" (108.175014)
NAD 27 (SURFACE LOCATION)	
LATITUDE	= 39°38'34.76" (39.642989)
LONGITUDE	= 108°10'27.76" (108.174378)

SCALE 1" = 1000'	DATE SURVEYED: 04-11-12	DATE DRAWN: 04-17-12
PARTY B.B. C.C. M.D.	REFERENCES G.L.O. PLAT	
WEATHER COLD	FILE Encana OIL & GAS (USA) INC.	

S89°50'59"W
 2640.58' (Meas.)

SURFACE LOCATION
UWF07A-09 K04 596

$N89^{\circ}55'26''E - 2638.66'$ (Meas.)

S00°09'25"E - 2634.15' (Meas.)

$S00^{\circ}10'57''E - 2642.84' (Meas.)$

1917 Brass Cap
2.5' High
Lat: 39.636808°
Long: 108.183536°

1917 Brass Cap
2.0' High
Lat: 39.636814°
Long: 108.174164°

1917 Brass Cap
2.3' High
Lat: 39.636808°
Long: 108.164797°

NOTE:
THE PROPOSED BOTTOM HOLE BEARS S22°55'25"E
4047.53' FROM THE PROPOSED WELL HEAD WHICH
IS LOCATED IN THE NE 1/4 SW 1/4 OF SECTION
4, T5S, R96W, 6th P.M. AT A DISTANCE OF 2241'
E SL 2402' FWL.

TARGET BOTTOM HOLE
UWF07A-09 K04 596

1.311'

1917 Brass Cap
1.5' High, Wooden
Post, Pile of Stones
Lat: 39.629581°
Long: 108.183528°

1917 Brass Cap
2.5' High, Pile
of Stones
Lat: 39.629583°
Long: 108.164786°

NOTE:
THE PROPERTY LINE IS LOCATED N10°W
6860' FROM THE TARGET BOTTOM HOLE.

1917 Brass Cap
1.7' High, 5/8"
Rebar
Lat: 39.622329°
Long: 108.183516°

1917 Brass Cap
1.7' High,
Lat: 39.622329°
Long: 108.174151°

1917 Brass Cap
2.0' High, Pine Post
Lat: 39.622332°
Long: 108.164769°

$N89^{\circ}53'09''E - 2638.95'$ (Meas.)

$N89^{\circ}51'22''E - 2644.09'$ (Meas.)

N00°11'59"W - 2633.21' (Meas.)

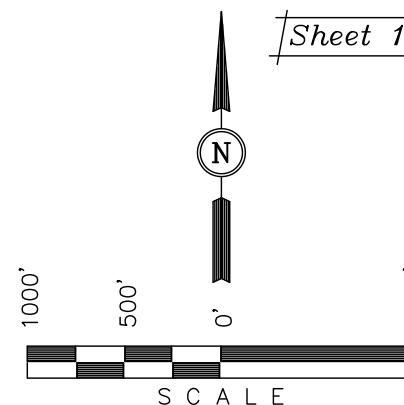
N00°13'19"W - 2642.33' (Meas.)

Well location, N. PARACHUTE UWF07A-09 K04 596 (TARGET BOTTOM HOLE), located as shown in the SE 1/4 NE 1/4 of Section 9, T5S, R96W, 6th P.M., Garfield County, Colorado.

BENCH MARK (H79) LOCATED IN THE NE 1/4 OF SECTION 35, T4S, R98W, 6th P.M. TAKEN FROM THE BULL FORK QUADRANGLE, COLORADO, 7.5 MINUTE SERIES (TOPOGRAPHICAL MAP) PUBLISHED BY THE UNITED STATES DEPARTMENT OF THE INTERIOR, GEOLOGICAL SURVEY. SAID ELEVATION IS MARKED AS BEING 8535 FEET.

BASIS OF BEARINGS IS A G.P.S. OBSERVATION.

Sheet 1b of 9



THIS IS TO CERTIFY THAT THE ABOVE PLAT WAS PREPARED AND LOCATION AS SHOWN WAS STAKED ON THE GROUND FROM FIELD NOTES OF ACTUAL SURVEYS MADE BY ME OR UNDER MY SUPERVISION AND THAT THE SAME ARE TRUE AND CORRECT TO THE BEST OF MY KNOWLEDGE AND BELIEF.

REGISTERED LAND SURVEYOR
REGISTRATION NO. 17492
STATE OF COLORADO

| = 90° SYMBOL

● = PROPOSED WELL HEAD.

▲ = SECTION CORNERS LOCATED.

Δ = SECTION CORNERS
RE-ESTABLISHED.
(Not Set on Ground.)

NAD 83 (TARGET BOTTOM HOLE)
LATITUDE = 39°37'57.81" (39.632725)
LONGITUDE = 108°10'10.00" (108.169444)
NAD 27 (TARGET BOTTOM HOLE)
LATITUDE = 39°37'57.90" (39.632750)
LONGITUDE = 108°10'07.71" (108.168808)

UINTAH ENGINEERING & LAND SURVEYING
85 SOUTH 200 EAST - VERNAL, UTAH 84078
(435) 789-0917

SCALE 1" = 1000'	DATE SURVEYED: 04-11-12	DATE DRAWN: 04-17-12
PARTY B.B. C.C. M.D.	REFERENCES G.L.O. PLAT	
WEATHER COLD	FILE Encana OIL & GAS (USA) INC.	