

S 1/4 Cor. Sec. 32
1970 Brass Cap, 0.2' High
E-W Fenceline
Lat: 39.651225°
Long: 108.192233°

T5S, R96W, 6th P.M.

SE Cor. Sec. 33
1953 Brass Cap
0.2' High, Pile
of Stones, Fence
Lat: 39.651322°
Long: 108.164147°

SW Cor. Sec. 33
1970 Brass Cap, 0.2' High
Steel Post, Fenceline
Lat: 39.651258°
Long: 108.182847°

Sec. 33

S89°35'21"W - 2638.68' (Meas.)
C.C. 1917 Brass Cap
0.5' High, Pile of Stones, Fence
Lat: 39.651322°
Long: 108.164839°

COC065556

T4S

S 1/4 Cor. Sec. 33
1970 Brass Cap
0.3' High, Fence Cor.
Lat: 39.651286°
Long: 108.173514°

**PROPERTY
LINE**

C.C. 1917 Brass Cap
Lat: 39.651256°
Long: 108.183561°

LOT 4

LOT 3

LOT 2

LOT 1

N. PARACHUTE UWF04B-10 H04 596
Elev. Graded Ground = 8270.3'

1917 Brass Cap
2.0' High
Lat: 39.644039°
Long: 108.183539°

NOTE:
THE PROPOSED BOTTOM HOLE FOR THIS WELL
IS LOCATED IN THE NE 1/4 NW 1/4 OF SECTION
10, T5S, R96W, 6th P.M. AT A DISTANCE OF 443'
FNL 1334' FWL. IT BEARS S21°24'16"E 3922.77'
FROM THE PROPOSED WELL HEAD.

NOTE:
THE PROPERTY LINE IS LOCATED N49°W
3139' FROM THE PROPOSED WELL HEAD.

NOTE:
SEE SHEET 6A FOR EXISTING IMPROVEMENTS
WITHIN 400' OF THE PROPOSED WELL
DISTURBANCE.

1917 Brass Cap
2.5' High
Lat: 39.636808°
Long: 108.183536°

1917 Brass Cap
2.0' High
Lat: 39.636814°
Long: 108.174164°

1917 Brass Cap
2.3' High
Lat: 39.636808°
Long: 108.164797°

S89°50'59"W - 2640.58' (Meas.)

S89°55'26"W - 2638.66' (Meas.)

N00°14'57"W
2630.20' (Meas. to C.C.)
N00°14'57"W
2630.20' (Meas. to True)
N00°08'02"W - 2634.58' (Meas.)

True Position
N00°11'23"W
2654.26' (Meas. To C.C.)
N00°11'23"W
2653.24' (Meas. To True)
2074'
80'
N00°18'20"W - 2634.55' (Meas.)

Encana OIL & GAS (USA) INC.

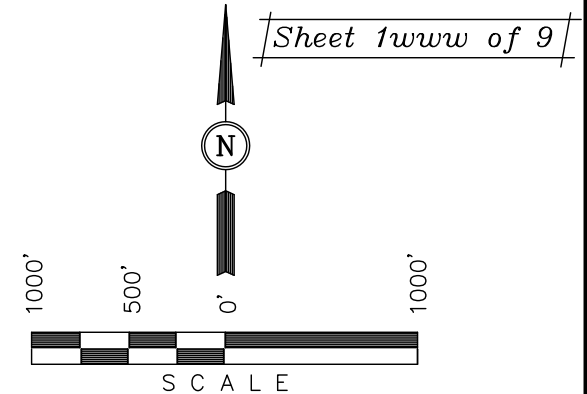
Well location, N. PARACHUTE UWF04B-10 H04 596
(SURFACE LOCATION), located as shown in the SE
1/4 NE 1/4 of Section 4, T5S, R96W, 6th P.M.,
Garfield County, Colorado.

BASIS OF ELEVATION

BENCH MARK (H79) LOCATED IN THE NE 1/4 OF SECTION
35, T4S, R98W, 6th P.M. TAKEN FROM THE BULL FORK
QUADRANGLE, COLORADO, 7.5 MINUTE SERIES (TOPO
GRAPHICAL MAP) PUBLISHED BY THE UNITED STATES
DEPARTMENT OF THE INTERIOR, GEOLOGICAL SURVEY.
SAID ELEVATION IS MARKED AS BEING 8535 FEET.

BASIS OF BEARINGS

BASIS OF BEARINGS IS A G.P.S. OBSERVATION.



CERTIFICATE

THIS IS TO CERTIFY THAT THE ABOVE PLAT WAS PREPARED AND
LOCATION AS SHOWN WAS STAKED ON THE GROUND FROM FIELD
NOTES OF ACTUAL SURVEYS MADE BY ME OR UNDER MY
SUPERVISION AND THAT THE SAME ARE TRUE AND CORRECT TO
THE BEST OF MY KNOWLEDGE AND BELIEF.

REGISTERED LAND SURVEYOR
REGISTRATION NO. 17492
STATE OF COLORADO
04-20-12

LEGEND:

- └─ = 90° SYMBOL
● = PROPOSED WELL HEAD.
▲ = SECTION CORNERS LOCATED.
△ = SECTION CORNERS
RE-ESTABLISHED.
(Not Set on Ground.)

LINE TABLE

LINE	DIRECTION	LENGTH
L1	N89°35'21"E	195.03'
L2	S89°37'21"W	200.90'

PDOP = 1.4

NAD 83 (SURFACE LOCATION)

LATITUDE = 39°38'44.25" (39.645625)
LONGITUDE = 108°09'54.41" (108.165114)

NAD 27 (SURFACE LOCATION)

LATITUDE = 39°38'44.34" (39.645650)
LONGITUDE = 108°09'52.12" (108.164478)

UINTAH ENGINEERING & LAND SURVEYING
85 SOUTH 200 EAST - VERNAL, UTAH 84078
(435) 789-1017

SCALE 1" = 1000'	DATE SURVEYED: 04-11-12	DATE DRAWN: 04-17-12
PARTY B.B. C.C. T.B.	REFERENCES G.L.O. PLAT	
WEATHER COLD	FILE Encana OIL & GAS (USA) INC.	

Encana OIL & GAS (USA) INC.

Well location, UWF04B-10 H04 596 (TARGET BOTTOM HOLE), located as shown in the NE 1/4 NW 1/4 of Section 10, T5S, R96W, 6th P.M., Garfield County, Colorado.

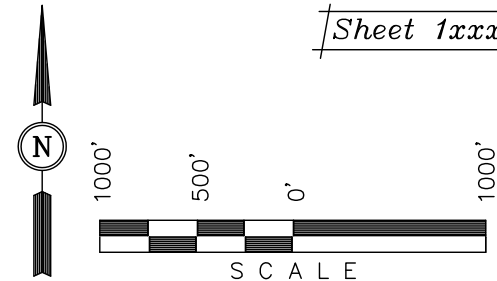
BASIS OF ELEVATION

BENCH MARK (H79) LOCATED IN THE NE 1/4 OF SECTION 35, T4S, R98W, 6th P.M. TAKEN FROM THE BULL FORK QUADRANGLE, COLORADO, 7.5 MINUTE SERIES (TOPO GRAPHICAL MAP) PUBLISHED BY THE UNITED STATES DEPARTMENT OF THE INTERIOR, GEOLOGICAL SURVEY. SAID ELEVATION IS MARKED AS BEING 8535 FEET.

BASIS OF BEARINGS

BASIS OF BEARINGS IS A G.P.S. OBSERVATION.

Sheet 1xxx of 9



CERTIFICATE

THIS IS TO CERTIFY THAT THE ABOVE PLAT WAS PREPARED AND LOCATION AS SHOWN WAS STAKED ON THE GROUND FROM FIELD NOTES OF ACTUAL SURVEYS MADE BY ME OR UNDER MY SUPERVISION AND THAT THE SAME ARE TRUE AND CORRECT TO THE BEST OF MY KNOWLEDGE AND BELIEF.

REGISTERED LAND SURVEYOR
REGISTRATION NO. 17492
STATE OF COLORADO
04-20-12

S 1/4 Cor Sec 10
1917 Brass Cap
2.3' High
Lat: 39.622325°
Long: 108.136786°

UINTAH ENGINEERING & LAND SURVEYING
85 SOUTH 200 EAST - VERNAL, UTAH 84078
(435) 789-1017

SCALE 1" = 1000'	DATE SURVEYED: 04-11-12	DATE DRAWN: 04-17-12
PARTY B.B. C.C. T.B.	REFERENCES G.L.O. PLAT	
WEATHER COLD	FILE Encana OIL & GAS (USA) INC.	

SURFACE LOCATION
UWF04B-10 H04 596

T5S, R96W, 6th P.M.

1917 Brass Cap
2.3' High
Lat: 39.636808°
Long: 108.164797°

N89°50'16"E

2639.21' (Meas.)

N89°46'07"E - 2619.54' (Meas.)

1917 Brass Cap
1.3' High
Lat: 39.636814°
Long: 108.155431°

1917 Brass Cap
1.3' High
Lat: 39.636825°
Long: 108.146133°

TARGET BOTTOM HOLE
UWF04B-10 H04 596

NOTE:
THE PROPERTY LINE IS LOCATED N60°E
4516' FROM THE TARGET BOTTOM HOLE.

1917 Brass Cap
2.5' High, Pile
of Stones
Lat: 39.629583°
Long: 108.164786°

1917 Brass Cap
2.0' High
Lat: 39.629600°
Long: 108.146103°

NOTE:
THE PROPOSED BOTTOM HOLE BEARS S21°24'16"E
3922.77' FROM THE PROPOSED WELL HEAD WHICH
IS LOCATED IN THE SE 1/4 NE 1/4 OF SECTION
4, T5S, R96W, 6th P.M. AT A DISTANCE OF 2074'
FNL 80' FEL.

1917 Brass Cap
2.0' High, Pine Post
Lat: 39.622332°
Long: 108.164769°

W.C.
1917 Brass Cap
Lat: 39.622331°
Long: 108.157622°

L1

True Position

True Position

L2

N89°55'47"E - 2630.72' (Meas.)

S89°53'03"W - 2637.38' (Meas.)

S89°50'29"W - 2616.84' (Meas.)

WC
1917 Brass Cap
2.0' High
Lat: 39.622328°
Long: 108.142167°

LEGEND:

- └─ = 90° SYMBOL
- = PROPOSED WELL HEAD.
- ▲ = SECTION CORNERS LOCATED.
- △ = SECTION CORNERS RE-ESTABLISHED.
(Not Set on Ground.)

LINE TABLE

LINE	DIRECTION	LENGTH
L1	N89°53'03"E	623.70'
L2	N89°55'47"E	1114.74'
L3	S21°24'16"E	3922.77'

NAD 83 (TARGET BOTTOM HOLE)

LATITUDE = 39°38'08.14" (39.635594)
LONGITUDE = 108°09'36.22" (108.160061)

NAD 27 (TARGET BOTTOM HOLE)

LATITUDE = 39°38'08.23" (39.635619)
LONGITUDE = 108°09'33.93" (108.159425)