

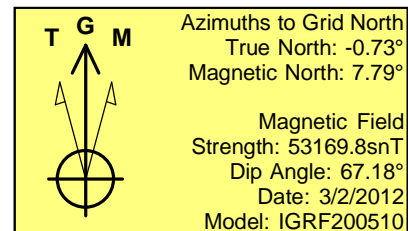
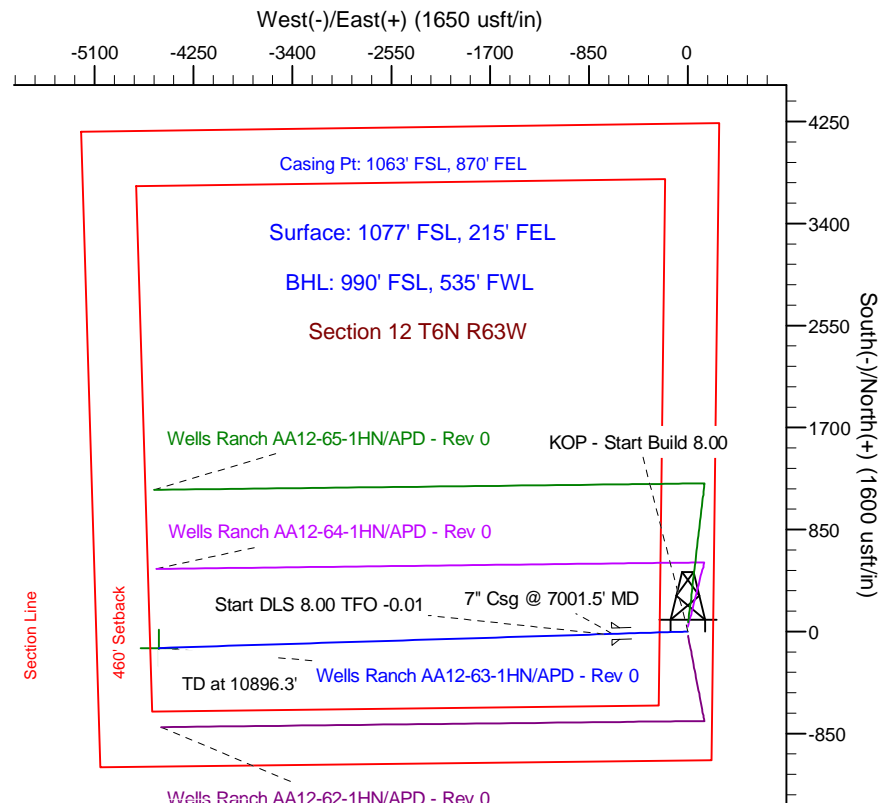
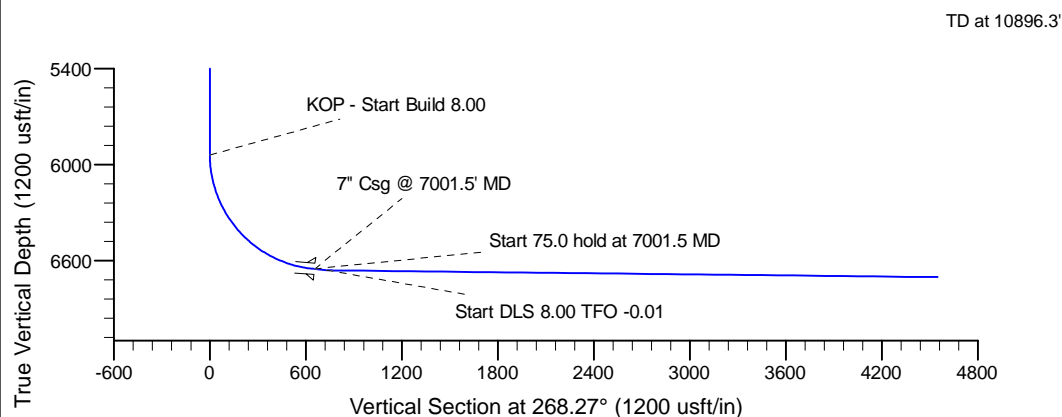
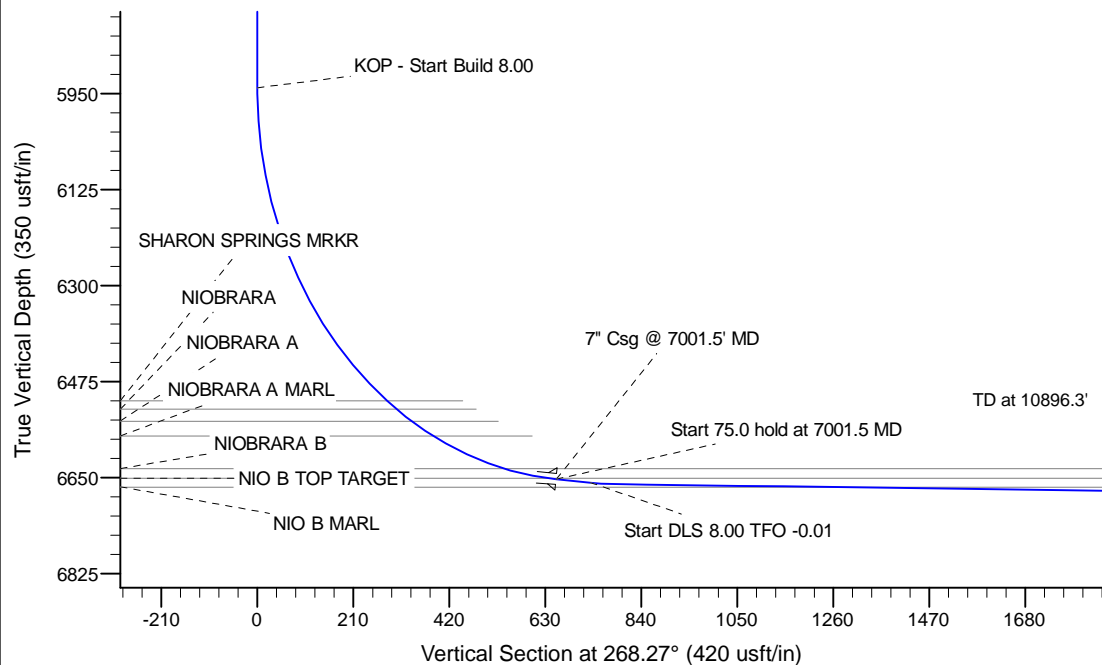
Project: Wattenberg Field  
 Site: AA (Sec.12-T06N-R63W) Weld County, CO  
 Well: Wells Ranch AA12-63-1HN  
 Wellbore: Original Drilling  
 Design: APD - Rev 0

# Northern Region Drilling

Geodetic System: US State Plane 1983  
 Datum: North American Datum 1983  
 Ellipsoid: GRS 1980  
 Zone: Colorado Northern Zone  
 System Datum: Mean Sea Level

## SECTION DETAILS

Sec	MD	Inc	Azi	TVD	+N/-S	+E/-W	Dleg	TFace	VSect	Target
1	0.0	0.00	0.00	0.0	0.0	0.0	0.00	0.00	0.0	
2	5939.0	0.00	0.00	5939.0	0.0	0.0	0.00	0.00	0.0	
3	7001.5	85.00	268.27	6652.5	-19.7	-653.5	8.00	268.27	653.8	
4	7076.5	85.00	268.27	6659.0	-22.0	-728.2	0.00	0.00	728.5	
5	7131.1	89.37	268.27	6661.7	-23.6	-782.7	8.00	-0.01	783.1	
6	10896.3	89.37	268.27	6703.0	-137.4	-4545.9	0.00	0.00	4548.0	Wells Ranch AA12-63-1HN BHL 990'FSL, 535'FWL



## WELL DETAILS: Wells Ranch AA12-63-1HN

Ground Level: 4857.0		
Northing	Easting	Latitude
1425798.61	3312593.15	40.496780
		Longitude
		-104.375990

Plan: APD - Rev 0 (Wells Ranch AA12-63-1HN/Original Drilling)

Created By: Carrie Willers Date: 9:35, March 05 2012

**OK to submit with 2A as per Noble Drilling**  
**3/5/2012 16:04**