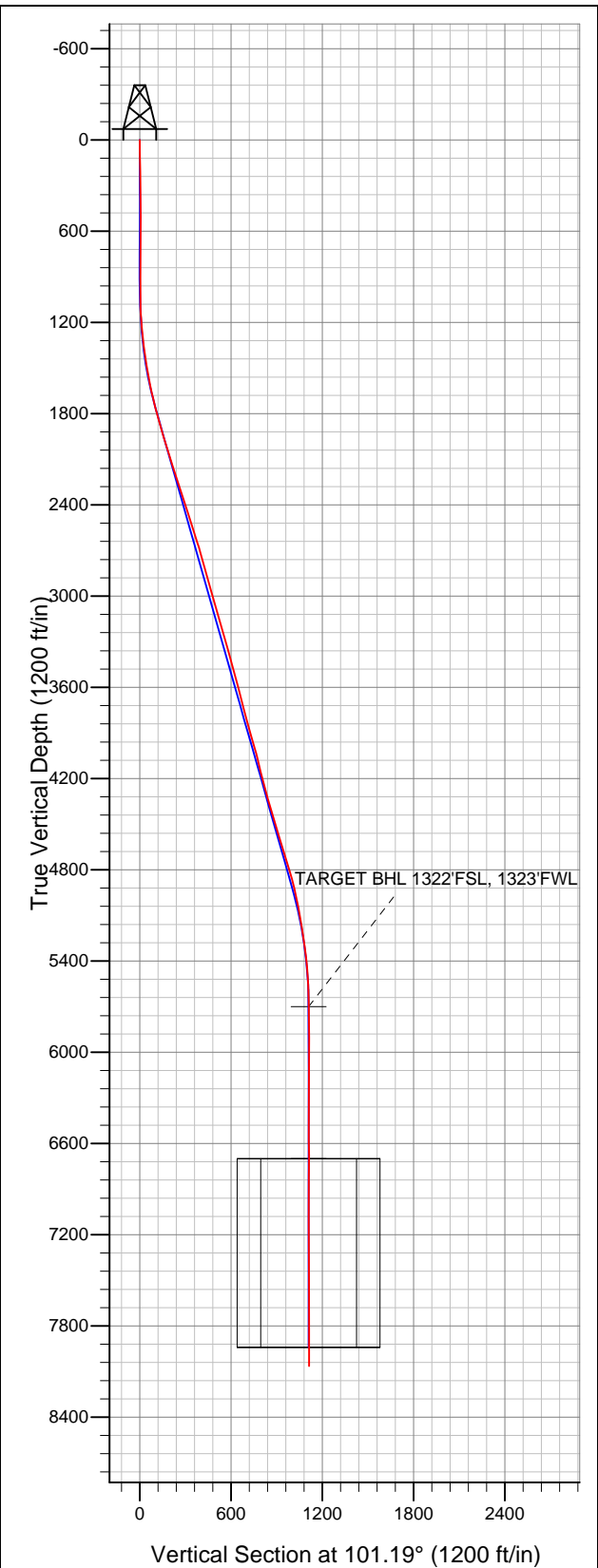


Well Name: SRC Margil 34BD

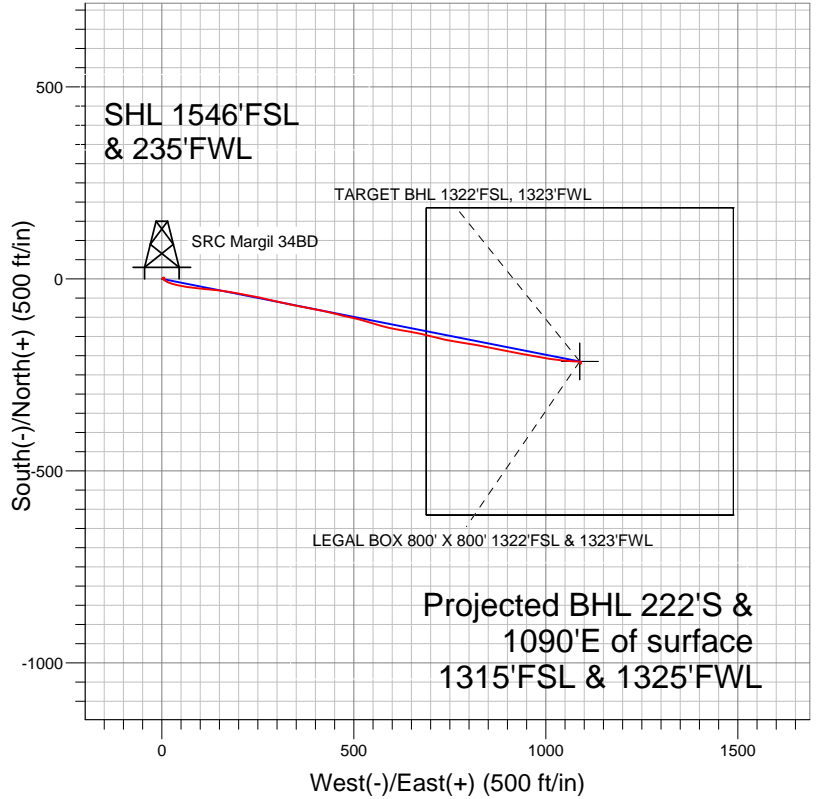
Surface Location: SRC Margil 13-34D Pad Sec.34-T4N-R68W
 North American Datum 1983 US State Plane 1983 Colorado Northern Zone
 Ground Elevation: 5133.0

+N/-S	+E/-W	Northing	Easting	Latitude	Longitude	Slot
0.0	0.0	1340428.74	3140130.55	40.266787	-104.997841	

 Original Well Elev WELL @ 5146.0ft (Original Well Elev)



Synergy Resources



LEGEND

- ✕ SRC Margil 34BD, Wellbore #1, Plan #1 (12-13-11) R V0
- Wellbore #1

Final Survey Plot

Projected Final Survey -
 8210'MD & 8064'TVD @ 1112'VS
 0.4 deg Inc 202.5 deg AZ

Project: SEC.34-T4N-R68W
 Site: SRC Margil 13-34D Pad Sec.34-T4N-R68W
 Well: SRC Margil 34BD
 Plan: Wellbore #1



Synergy Resources

SEC.34-T4N-R68W

SRC Margil 13-34D Pad Sec.34-T4N-R68W

SRC Margil 34BD

Wellbore #1

Design: Wellbore #1

Standard Survey Report

21 December, 2011

Survey	Wellbore Data									
	Measured Depth (ft)	Inclination (°)	Azimuth (°)	Vertical Depth (ft)	+N/-S (ft)	+E/-W (ft)	Vertical Section (ft)	Dogleg Rate (°/100ft)	Build Rate (°/100ft)	Turn Rate (°/100ft)
Survey A	0.0	0.00	0.00	0.0	0.0	0.0	0.0	0.00	0.00	0.00
	121.0	1.10	68.50	121.0	0.4	1.1	1.0	0.91	0.91	0.00
	210.0	0.70	61.80	210.0	1.0	2.4	2.1	0.46	-0.45	-7.53
	301.0	0.40	75.70	301.0	1.3	3.2	2.8	0.36	-0.33	15.27
	393.0	0.70	92.10	393.0	1.4	4.0	3.7	0.37	0.33	17.83
	484.0	1.00	72.00	484.0	1.6	5.3	4.9	0.46	0.33	-22.09
	574.0	0.40	13.80	574.0	2.2	6.2	5.6	0.95	-0.67	-64.67
	666.0	0.50	343.40	666.0	2.9	6.1	5.4	0.28	0.11	-33.04
	734.0	0.50	313.00	734.0	3.4	5.8	5.1	0.39	0.00	-44.71
	828.0	0.90	304.60	827.9	4.1	4.9	4.0	0.44	0.43	-8.94
	921.0	1.10	218.80	920.9	3.8	3.7	2.9	1.47	0.22	-92.26
	1,015.0	1.70	185.90	1,014.9	1.7	3.0	2.7	1.04	0.64	-35.00
	1,109.0	2.80	140.60	1,108.8	-1.5	4.4	4.6	2.14	1.17	-48.19

Company:	Synergy Resources	Local Co-ordinate Reference:	Well SRC Margil 34BD
Project:	SEC.34-T4N-R68W	TVD Reference:	WELL @ 5146.0ft (Original Well Elev)
Site:	SRC Margil 13-34D Pad Sec.34-T4N-R68W	MD Reference:	WELL @ 5146.0ft (Original Well Elev)
Well:	SRC Margil 34BD	North Reference:	True
Wellbore:	Wellbore #1	Survey Calculation Method:	Minimum Curvature
Design:	Wellbore #1	Database:	Landmark

Survey										
Measured Depth (ft)	Inclination (°)	Azimuth (°)	Vertical Depth (ft)	+N/-S (ft)	+E/-W (ft)	Vertical Section (ft)	Dogleg Rate (°/100ft)	Build Rate (°/100ft)	Turn Rate (°/100ft)	
1,202.0	4.80	123.20	1,201.6	-5.4	9.1	9.9	2.46	2.15	-18.71	
1,296.0	6.90	113.30	1,295.1	-9.8	17.5	19.1	2.47	2.23	-10.53	
1,390.0	7.90	104.40	1,388.4	-13.6	29.0	31.1	1.62	1.06	-9.47	
1,483.0	8.70	100.00	1,480.4	-16.4	42.1	44.5	1.10	0.86	-4.73	
1,577.0	10.50	100.30	1,573.1	-19.2	57.5	60.1	1.92	1.91	0.32	
1,670.0	12.70	99.80	1,664.2	-22.4	75.9	78.8	2.37	2.37	-0.54	
1,764.0	14.80	94.70	1,755.5	-25.2	98.1	101.1	2.58	2.23	-5.43	
1,858.0	15.30	95.80	1,846.2	-27.4	122.4	125.4	0.61	0.53	1.17	
1,952.0	16.40	95.40	1,936.7	-29.9	147.9	150.9	1.18	1.17	-0.43	
2,045.0	17.90	100.30	2,025.5	-33.7	175.1	178.3	2.24	1.61	5.27	
2,139.0	17.90	101.00	2,115.0	-39.0	203.5	207.2	0.23	0.00	0.74	
2,233.0	17.50	100.00	2,204.5	-44.3	231.6	235.8	0.53	-0.43	-1.06	
2,327.0	17.50	102.60	2,294.2	-49.8	259.3	264.0	0.83	0.00	2.77	
2,420.0	17.60	103.70	2,382.9	-56.2	286.6	292.0	0.37	0.11	1.18	
2,514.0	18.30	102.10	2,472.3	-62.6	314.8	321.0	0.91	0.74	-1.70	
2,608.0	18.20	101.00	2,561.6	-68.5	343.7	350.4	0.38	-0.11	-1.17	
2,701.0	17.70	101.40	2,650.0	-74.1	371.8	379.1	0.55	-0.54	0.43	
2,795.0	15.70	100.30	2,740.1	-79.2	398.3	406.1	2.15	-2.13	-1.17	
2,889.0	15.30	102.40	2,830.6	-84.1	422.9	431.2	0.73	-0.43	2.23	
2,982.0	15.30	105.10	2,920.3	-90.0	446.8	455.7	0.77	0.00	2.90	
3,076.0	15.90	102.40	3,010.9	-96.0	471.3	481.0	1.00	0.64	-2.87	
3,170.0	16.20	102.10	3,101.2	-101.5	496.7	507.0	0.33	0.32	-0.32	
3,263.0	16.60	106.70	3,190.4	-108.0	522.1	533.2	1.46	0.43	4.95	
3,357.0	15.90	105.80	3,280.7	-115.4	547.4	559.4	0.79	-0.74	-0.96	
3,450.0	15.20	107.00	3,370.3	-122.4	571.3	584.2	0.83	-0.75	1.29	
3,544.0	15.50	101.70	3,460.9	-128.6	595.4	609.0	1.53	0.32	-5.64	
3,638.0	15.10	98.90	3,551.6	-133.0	619.8	633.8	0.89	-0.43	-2.98	
3,731.0	14.60	100.50	3,641.5	-137.0	643.3	657.6	0.70	-0.54	1.72	
3,825.0	13.70	101.40	3,732.6	-141.4	665.8	680.6	0.99	-0.96	0.96	
3,918.0	15.50	103.70	3,822.6	-146.5	688.7	704.0	2.03	1.94	2.47	
4,012.0	15.70	104.20	3,913.2	-152.6	713.2	729.3	0.26	0.21	0.53	
4,106.0	16.40	102.30	4,003.5	-158.5	738.5	755.2	0.93	0.74	-2.02	
4,200.0	14.30	98.90	4,094.1	-163.1	763.0	780.1	2.43	-2.23	-3.62	
4,293.0	13.60	98.90	4,184.4	-166.6	785.1	802.5	0.75	-0.75	0.00	
4,387.0	14.90	100.20	4,275.5	-170.5	807.9	825.6	1.42	1.38	1.38	
4,481.0	15.90	101.40	4,366.1	-175.2	832.4	850.6	1.12	1.06	1.28	
4,574.0	17.30	100.70	4,455.3	-180.2	858.5	877.2	1.52	1.51	-0.75	
4,668.0	16.80	102.40	4,545.1	-185.7	885.5	904.7	0.75	-0.53	1.81	
4,762.0	17.20	98.90	4,635.0	-190.8	912.5	932.2	1.17	0.43	-3.72	
4,855.0	17.30	101.00	4,723.8	-195.6	939.7	959.8	0.68	0.11	2.26	
4,949.0	16.10	100.70	4,813.9	-200.7	966.2	986.8	1.28	-1.28	-0.32	
5,043.0	14.20	99.30	4,904.6	-205.0	990.4	1,011.3	2.06	-2.02	-1.49	
5,137.0	11.20	100.00	4,996.3	-208.4	1,010.8	1,032.0	3.20	-3.19	0.74	
5,230.0	9.90	96.60	5,087.7	-210.9	1,027.6	1,049.0	1.55	-1.40	-3.66	
5,324.0	9.50	95.60	5,180.4	-212.6	1,043.3	1,064.8	0.46	-0.43	-1.06	
5,418.0	8.70	93.30	5,273.2	-213.7	1,058.2	1,079.5	0.93	-0.85	-2.45	
5,512.0	6.10	94.90	5,366.4	-214.6	1,070.2	1,091.5	2.77	-2.77	1.70	
5,605.0	4.70	93.30	5,459.0	-215.2	1,079.0	1,100.2	1.51	-1.51	-1.72	
5,699.0	3.20	92.80	5,552.8	-215.6	1,085.4	1,106.6	1.60	-1.60	-0.53	
5,793.0	1.10	92.40	5,646.7	-215.7	1,089.0	1,110.1	2.23	-2.23	-0.43	
5,846.3	0.75	96.45	5,700.0	-215.8	1,089.8	1,111.0	0.66	-0.65	7.60	
TARGET BHL 1322'FSL, 1323'FWL										
5,886.0	0.50	103.10	5,739.7	-215.9	1,090.2	1,111.4	0.66	-0.64	16.75	
5,980.0	0.40	155.30	5,833.7	-216.3	1,090.8	1,112.0	0.43	-0.11	55.53	

Company:	Synergy Resources	Local Co-ordinate Reference:	Well SRC Margil 34BD
Project:	SEC.34-T4N-R68W	TVD Reference:	WELL @ 5146.0ft (Original Well Elev)
Site:	SRC Margil 13-34D Pad Sec.34-T4N-R68W	MD Reference:	WELL @ 5146.0ft (Original Well Elev)
Well:	SRC Margil 34BD	North Reference:	True
Wellbore:	Wellbore #1	Survey Calculation Method:	Minimum Curvature
Design:	Wellbore #1	Database:	Landmark

Survey									
Measured Depth (ft)	Inclination (°)	Azimuth (°)	Vertical Depth (ft)	+N/-S (ft)	+E/-W (ft)	Vertical Section (ft)	Dogleg Rate (°/100ft)	Build Rate (°/100ft)	Turn Rate (°/100ft)
6,074.0	0.40	160.40	5,927.7	-216.9	1,091.0	1,112.4	0.04	0.00	5.43
6,168.0	0.20	226.90	6,021.7	-217.3	1,091.0	1,112.4	0.39	-0.21	70.74
6,261.0	0.30	205.60	6,114.7	-217.6	1,090.8	1,112.3	0.15	0.11	-22.90
6,355.0	0.40	245.00	6,208.7	-218.0	1,090.4	1,112.0	0.27	0.11	41.91
6,449.0	0.30	272.80	6,302.7	-218.1	1,089.8	1,111.5	0.21	-0.11	29.57
6,543.0	0.30	188.00	6,396.7	-218.3	1,089.6	1,111.2	0.43	0.00	-90.21
6,636.0	0.20	190.90	6,489.7	-218.7	1,089.5	1,111.2	0.11	-0.11	3.12
6,730.0	0.40	153.60	6,583.7	-219.2	1,089.6	1,111.4	0.29	0.21	-39.68
6,824.0	0.20	197.40	6,677.7	-219.6	1,089.7	1,111.6	0.31	-0.21	46.60
6,846.3	0.16	214.29	6,700.0	-219.7	1,089.7	1,111.6	0.29	-0.17	75.63
LEGAL BOX 800' X 800' 1322'FSL & 1323'FWL									
6,918.0	0.20	283.10	6,771.7	-219.8	1,089.5	1,111.4	0.29	0.05	96.01
7,011.0	0.30	52.70	6,864.7	-219.6	1,089.5	1,111.4	0.49	0.11	139.36
7,105.0	0.20	351.00	6,958.7	-219.3	1,089.7	1,111.5	0.29	-0.11	-65.64
7,199.0	0.40	302.10	7,052.7	-218.9	1,089.4	1,111.2	0.33	0.21	-52.02
7,293.0	0.20	283.00	7,146.7	-218.7	1,089.0	1,110.7	0.24	-0.21	-20.32
7,386.0	0.20	164.70	7,239.7	-218.8	1,088.9	1,110.6	0.37	0.00	-127.20
7,480.0	0.40	149.00	7,333.7	-219.3	1,089.1	1,110.9	0.23	0.21	-16.70
7,574.0	0.20	114.60	7,427.7	-219.6	1,089.4	1,111.3	0.28	-0.21	-36.60
7,668.0	0.20	112.30	7,521.7	-219.8	1,089.7	1,111.6	0.01	0.00	-2.45
7,764.0	0.50	89.10	7,617.7	-219.8	1,090.3	1,112.2	0.34	0.31	-24.17
7,857.0	0.30	194.70	7,710.7	-220.0	1,090.6	1,112.6	0.70	-0.22	113.55
7,951.0	0.20	146.20	7,804.7	-220.4	1,090.6	1,112.7	0.24	-0.11	-51.60
8,045.0	0.40	216.00	7,898.7	-220.8	1,090.5	1,112.7	0.40	0.21	74.26
8,139.0	0.50	204.60	7,992.6	-221.5	1,090.2	1,112.4	0.14	0.11	-12.13
8,167.0	0.40	202.50	8,020.6	-221.7	1,090.1	1,112.4	0.36	-0.36	-7.50
8,210.0	0.40	202.50	8,063.6	-221.9	1,090.0	1,112.3	0.00	0.00	0.00

Checked By: _____ Approved By: _____ Date: _____