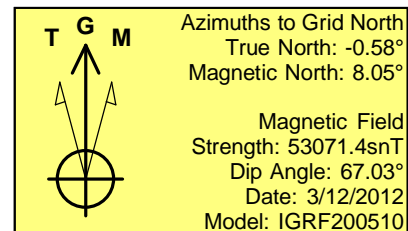
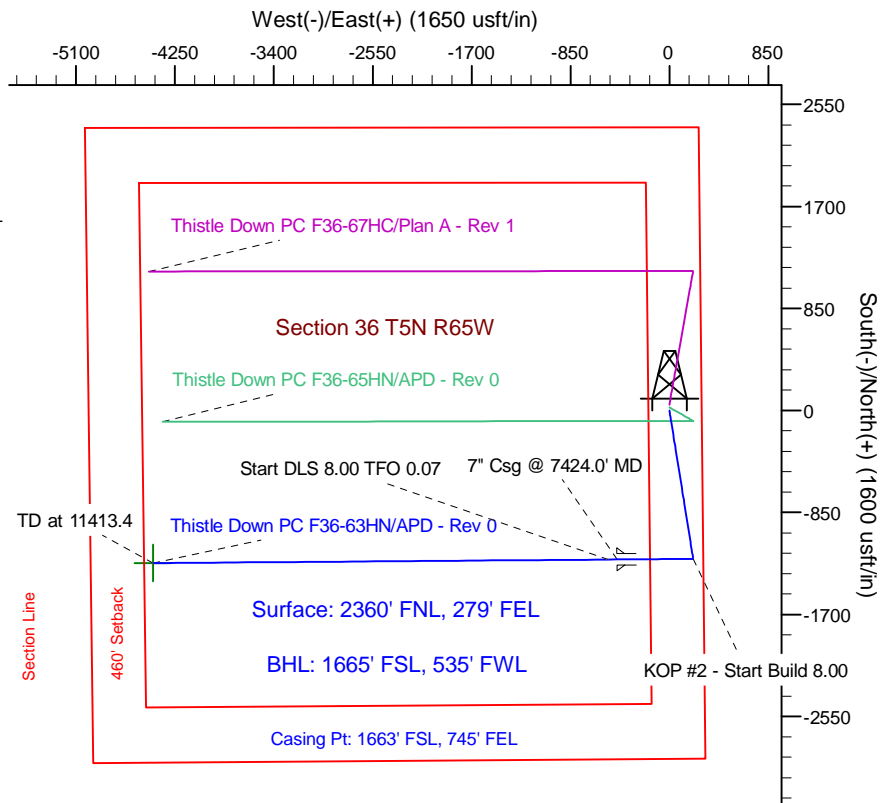
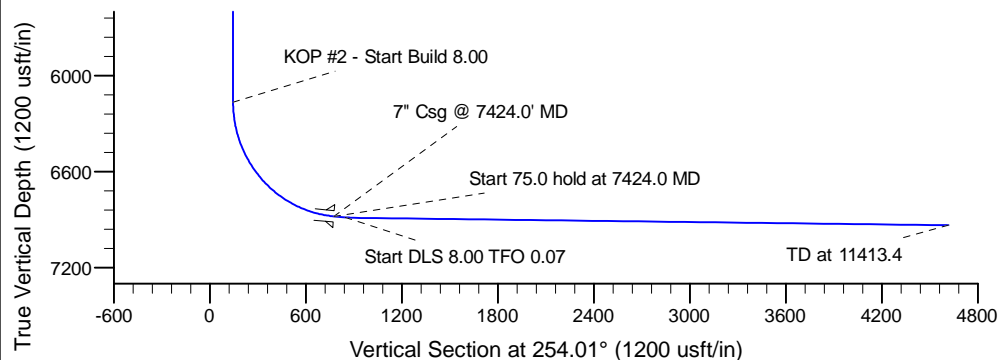
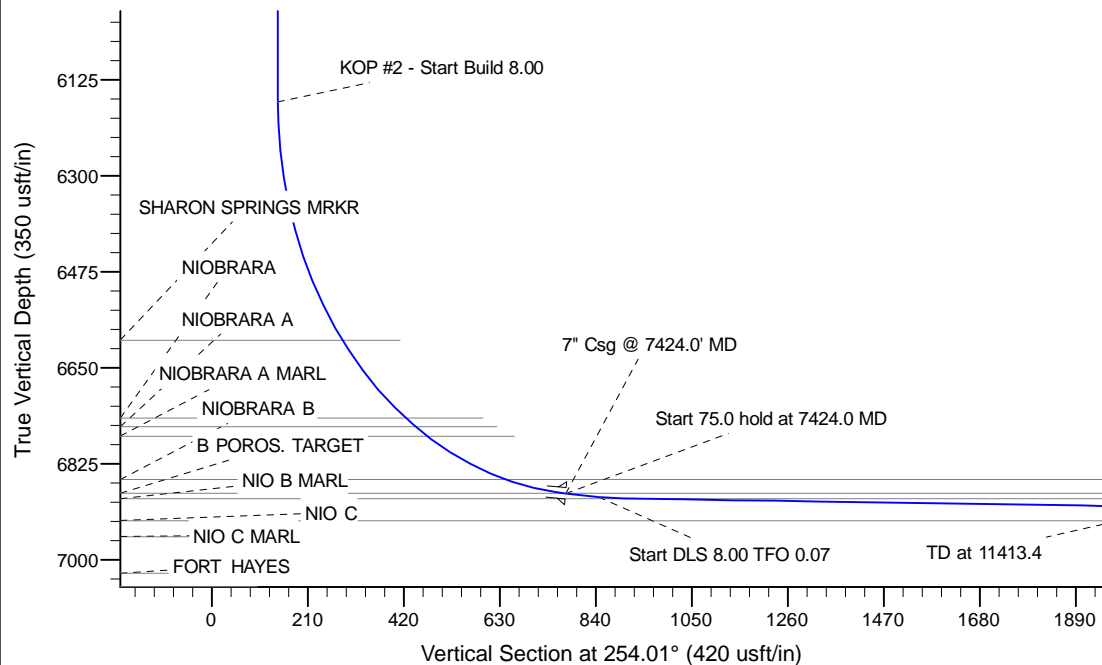


Project: Wattenberg Field  
 Site: F (Sec.36-T05N-R65W) Weld County, CO  
 Well: Thistle Down PC F36-63HN  
 Wellbore: Original Drilling  
 Design: APD - Rev 0

# Northern Region Drilling

Geodetic System: US State Plane 1983  
 Datum: North American Datum 1983  
 Ellipsoid: GRS 1980  
 Zone: Colorado Northern Zone  
 System Datum: Mean Sea Level

SECTION DETAILS										
Sec	MD	Inc	Azi	TVD	+N/-S	+E/-W	Dleg	TFace	VSec	Target
1	0.0	0.00	0.00	0.0	0.0	0.0	0.00	0.00	0.0	
2	1000.0	0.00	0.00	1000.0	0.0	0.0	0.00	0.00	0.0	
3	1759.5	18.99	170.64	1745.7	-123.0	20.3	2.50	170.64	14.4	
4	4846.1	18.99	170.64	4664.3	-1114.0	183.7	0.00	0.00	130.4	
5	5605.6	0.00	0.00	5410.0	-1237.0	204.0	2.50	180.00	144.8	
6	6361.5	0.00	0.00	6165.9	-1237.0	204.0	0.00	0.00	144.8	
7	7424.0	85.00	269.56	6879.4	-1242.0	-449.8	8.00	269.56	774.6	
8	7499.0	85.00	269.56	6885.9	-1242.6	-524.5	0.00	0.00	846.6	
9	7552.8	89.30	269.57	6888.6	-1243.0	-578.2	8.00	0.07	898.3	
0	11413.4	89.30	269.57	6935.4	-1272.3	-4438.4	0.00	0.00	4617.2	Thistle Down PC F36-63HN BHL 1665'FSL, 535'FWL



WELL DETAILS: Thistle Down PC F36-63HN			
Ground Level: 4770.0			
Northing	Easting	Latitude	Longitude
1373934.08	3249969.12	40.356380	-104.603040
Plan: APD - Rev 0 (Thistle Down PC F36-63HN/Original Drilling)			
Created By: Carrie Willers		Date: 11:12, March 14 2012	
OK to submit with 2A as per Noble Drilling 3/14/2012 1:52			