

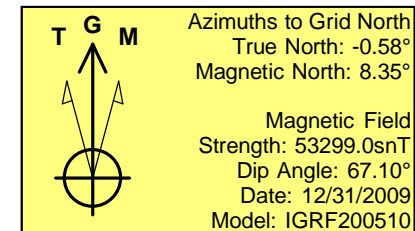
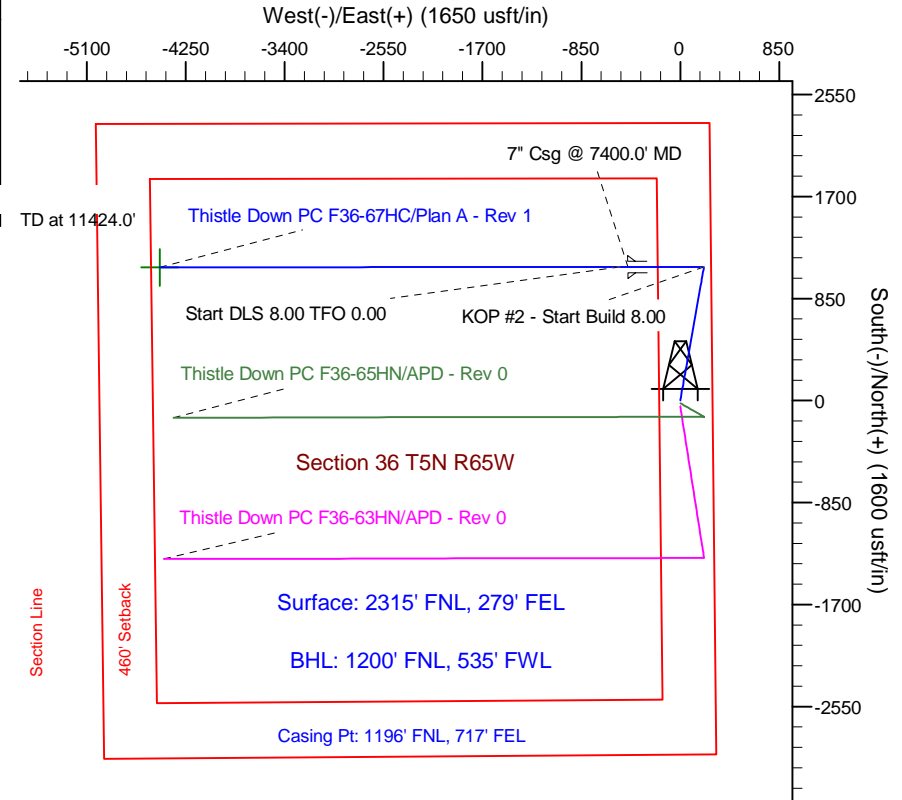
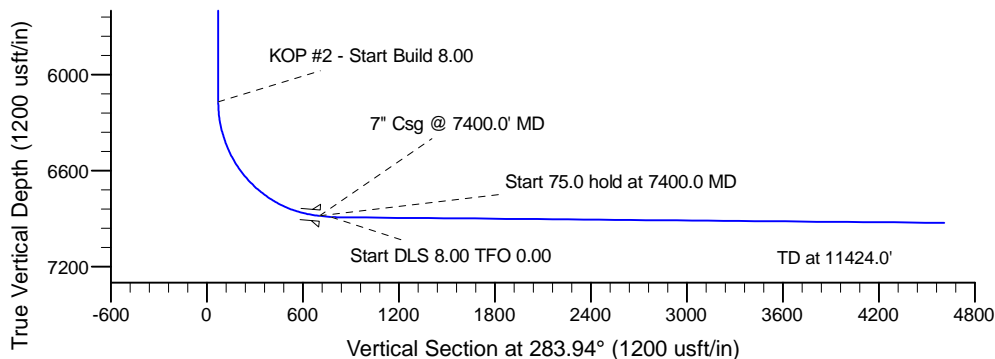
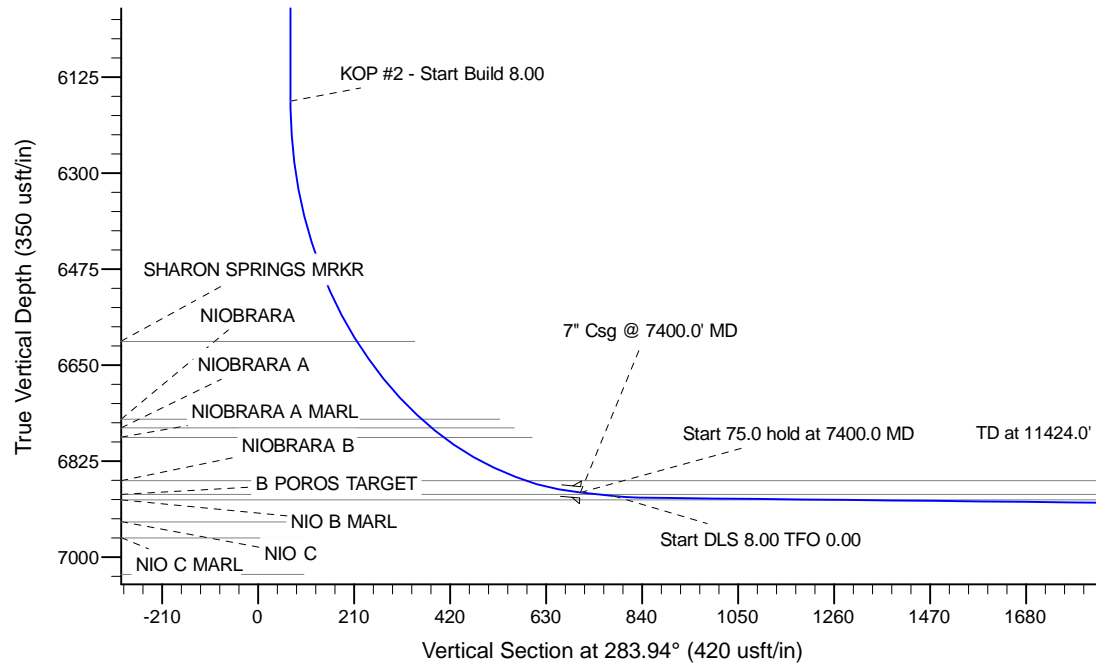
Project: Wattenberg Field
 Site: F (Sec.36-T05N-R65W) Weld County, CO
 Well: Thistle Down PC F36-67HC
 Wellbore: Original Drilling
 Design: Plan A - Rev 1

Northern Region Drilling

Geodetic System: US State Plane 1983
 Datum: North American Datum 1983
 Ellipsoid: GRS 1980
 Zone: Colorado Northern Zone
 System Datum: Mean Sea Level

SECTION DETAILS

Sec	MD	Inc	Azi	TVD	+N/-S	+E/-W	Dleg	TFace	Vsect	Target
1	0.0	0.00	0.00	0.0	0.0	0.0	0.00	0.00	0.0	
2	1200.0	0.00	0.00	1200.0	0.0	0.0	0.00	0.00	0.0	
3	1923.5	18.09	10.37	1911.6	111.4	20.4	2.50	10.37	7.1	
4	4844.8	18.09	10.37	4688.4	1003.6	183.6	0.00	0.00	63.5	
5	5568.3	0.00	0.00	5400.0	1115.0	204.0	2.50	180.00	70.6	
6	6337.5	0.00	0.00	6169.2	1115.0	204.0	0.00	0.00	70.6	
7	7400.0	85.00	269.94	6882.7	1114.3	-449.8	8.00	269.94	704.9	
8	7475.0	85.00	269.94	6889.2	1114.2	-524.5	0.00	0.00	777.4	
9	7531.2	89.50	269.94	6891.9	1114.2	-580.6	8.00	0.00	831.9	
10	11424.0	89.50	269.94	6926.2	1110.1	-4473.2	0.00	0.00	4608.9	



WELL DETAILS: Thistle Down PC F36-67HC			
Ground Level: 4770.0			
Northing	Easting	Latitude	Longitude
1373981.43	3249968.64	40.356510	-104.603040
Plan: Plan A - Rev 1 (Thistle Down PC F36-67HC/Original Drilling)			
Created By: Carrie Willers		Date: 17:34, March 13 2012	
OK to submit with 2A as per Noble Drilling 3/14/2012 1:56			