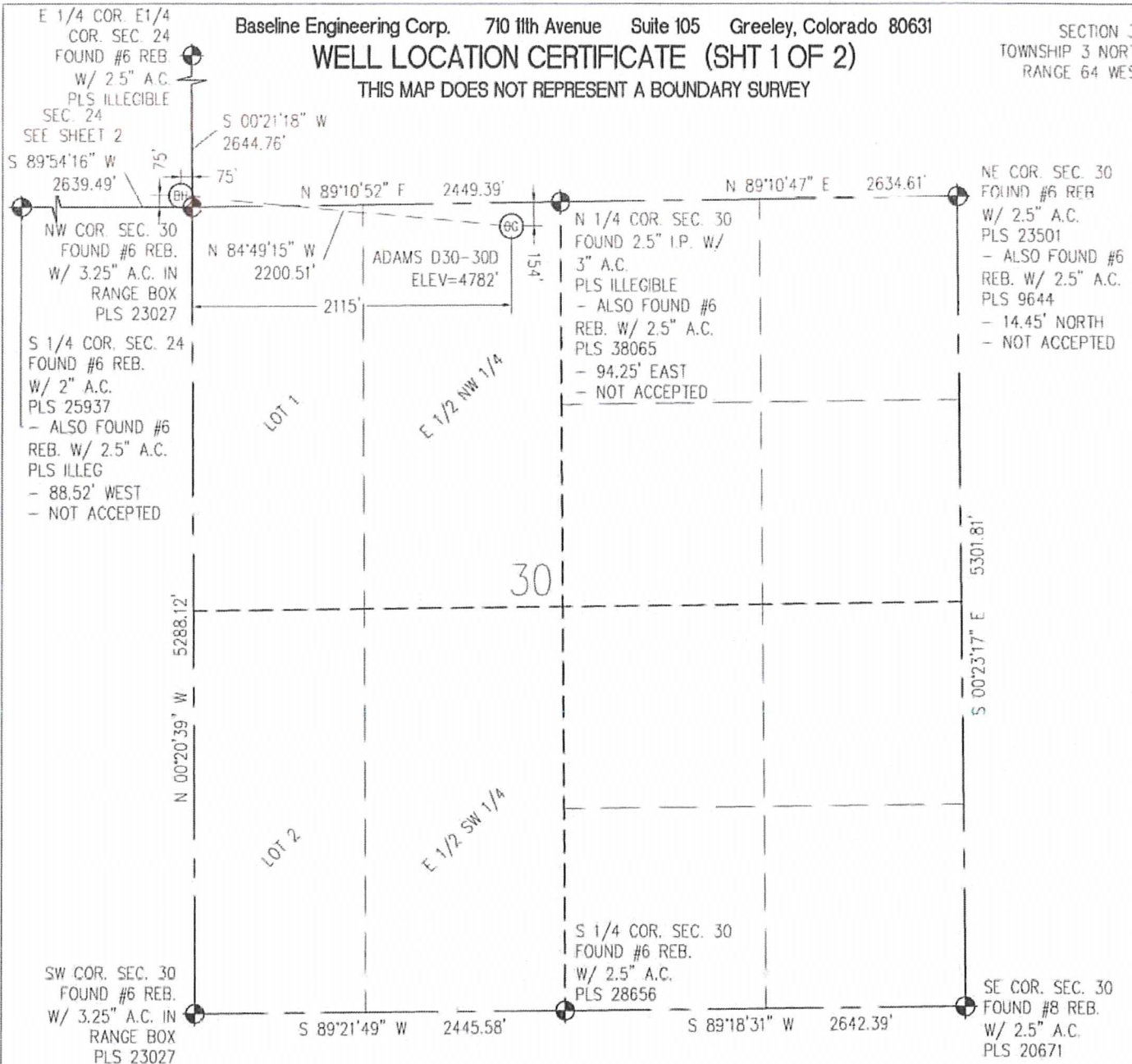


WELL LOCATION CERTIFICATE (SHT 1 OF 2)

THIS MAP DOES NOT REPRESENT A BOUNDARY SURVEY



IN ACCORDANCE WITH A REQUEST FROM CJ PIETRI - NOBLE ENERGY, BASELINE ENGINEERING CORP. HAS DETERMINED THE LOCATION OF THE ADAMS D30-30D TO BE 154' FNL AND 2,115' FWL, AS MEASURED AT NINETY (90) DEGREES FROM THE SECTION LINE OF SECTION 30, TOWNSHIP 3 NORTH, RANGE 64 WEST AND THE BOTTOM HOLE LOCATION TO BE 75' FSL AND 75' FEL OF SECTION 24, TOWNSHIP 3 NORTH, RANGE 65 WEST, 6TH PRINCIPAL MERIDIAN, WELD COUNTY, COLORADO.

I HEREBY CERTIFY THAT THIS WELL LOCATION CERTIFICATE WAS PREPARED BY ME, OR UNDER MY DIRECT SUPERVISION, THAT THE FIELD WORK WAS COMPLETED ON 2/7/2012, THAT IT IS NOT A LAND SURVEY PLAT OR AN IMPROVEMENT SURVEY PLAT, AND THAT IT IS NOT TO BE RELIED UPON FOR ESTABLISHMENT OF FENCE, BUILDING, OR OTHER FUTURE IMPROVEMENT LINES.

Scale 1" = 1000 ft

NOTES:

- 1) LAT/LONG SHOWN ARE BASED ON A GPS OBSERVATION (NAD83).
- 2) BEARINGS SHOWN ARE GRID BEARINGS OF THE COLORADO STATE PLANE COORDINATE SYSTEM, NORTH ZONE, NORTH AMERICAN DATUM 1983/2007.
- 3) GROUND ELEVATIONS ARE BASED ON A GPS OBSERVATION (NAVD 88 DATUM).
- 4) ALL DISTANCES SHOWN ARE FIELD MEASURED UNLESS OTHERWISE NOTED.
- 5) THE NEAREST EXISTING WELL IS: HETTINGER D30-3 453' SOUTHWEST.
- 6) IMPROVEMENTS: SEE LOCATION DRAWING EXHIBIT FOR ALL VISIBLE IMPROVEMENTS WITHIN 600' OF WELL HEAD.
- 7) SURFACE USE: SEASONAL AGRICULTURAL FIELD.
- 8) OPERATOR NAME: B. BIRCH.

NOTICE: According to Colorado law you MUST commence any legal action based upon any defect in this W.L.C. within three years after you first discover such defect. In no event may any action based upon any defect in this W.L.C. be commenced more than ten years from this said date of the certification show herein.

SURFACE HOLE:
LATITUDE: 40.202993° N
LONGITUDE: 104.595168° W
PDOP: 1.1
1/4, 1/4: NE1/4NW1/4
NEAREST PROPERTY LINE: 154' N

BOTTOM HOLE:
LATITUDE: 40.203599° N
LONGITUDE: 104.603004° W

LEGEND

- - FOUND/SET SURVEY MONUMENT PER MONUMENT RECORD EXCEPTIONS NOTED.
- - CALCULATED SURVEY MONUMENT POSITION
- (C) - CALCULATED DIMENSION



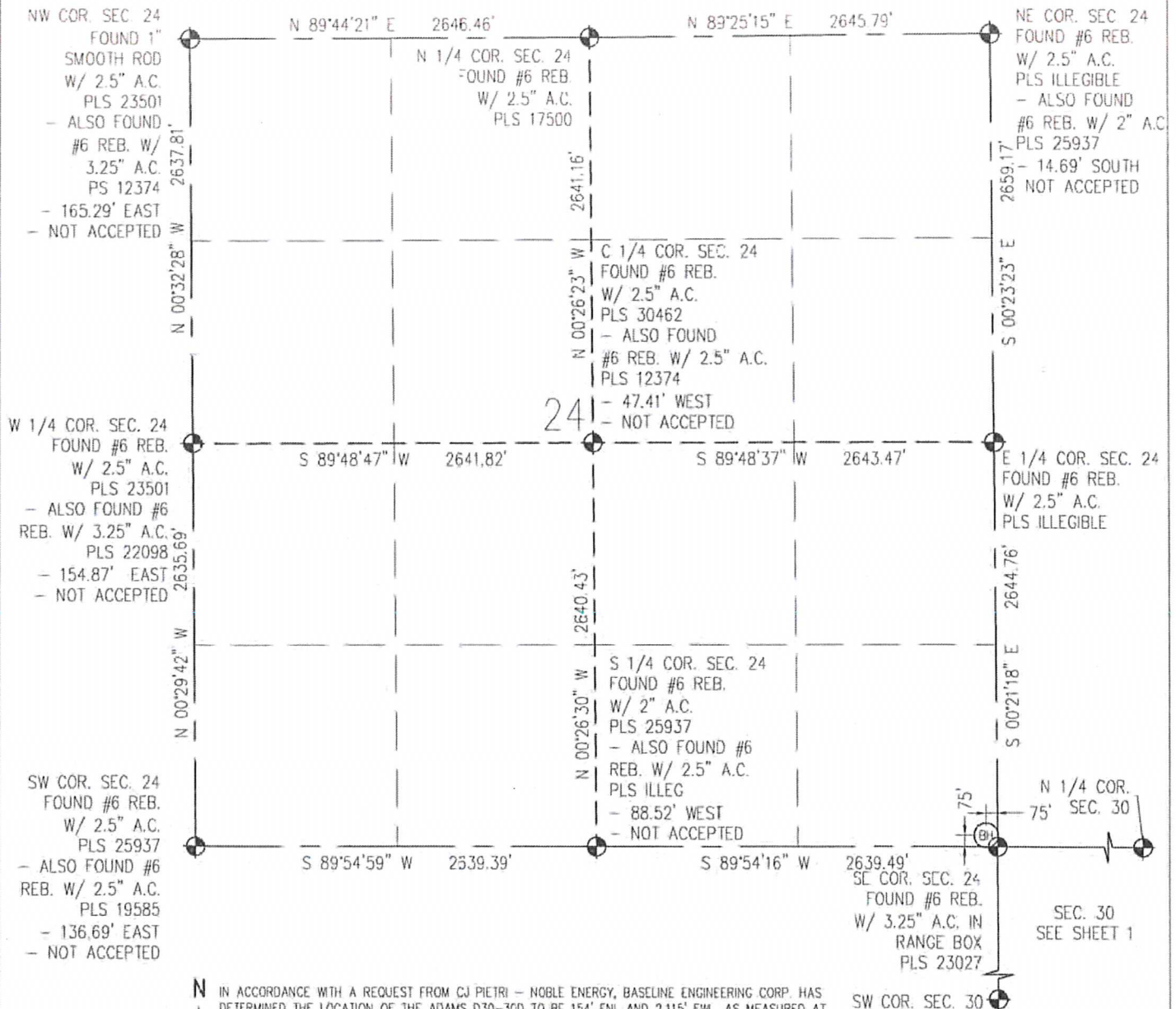
Steven A. Lund
Professional Land Surveyor Registration No. 34995
State of Colorado
FOR AND ON BEHALF OF BASELINE ENGINEERING CORP.

Completed
2/10/2012

JOB : NOB03N64W30-02

WELL LOCATION CERTIFICATE (SHT 2 OF 2)

THIS MAP DOES NOT REPRESENT A BOUNDARY SURVEY



N IN ACCORDANCE WITH A REQUEST FROM CJ PIETRI - NOBLE ENERGY, BASELINE ENGINEERING CORP. HAS DETERMINED THE LOCATION OF THE ADAMS D30-30D TO BE 154' FNL AND 2,115' FWL, AS MEASURED AT NINETY (90) DEGREES FROM THE SECTION LINE OF SECTION 30, TOWNSHIP 3 NORTH, RANGE 64 WEST AND THE BOTTOM HOLE LOCATION TO BE 75' FSL AND 75' FEL OF SECTION 24, TOWNSHIP 3 NORTH, RANGE 65 WEST, 6TH PRINCIPAL MERIDIAN, WELD COUNTY, COLORADO.

I HEREBY CERTIFY THAT THIS WELL LOCATION CERTIFICATE WAS PREPARED BY ME, OR UNDER MY DIRECT SUPERVISION, THAT THE FIELD WORK WAS COMPLETED ON 2/7/2012, THAT IT IS NOT A LAND SURVEY PLAT OR AN IMPROVEMENT SURVEY PLAT, AND THAT IT IS NOT TO BE RELIED UPON FOR ESTABLISHMENT OF FENCE, BUILDING, OR OTHER FUTURE IMPROVEMENT LINES.

NOTES:

- 1) LAT/LONG SHOWN ARE BASED ON A GPS OBSERVATION (NAD83).
- 2) BEARINGS SHOWN ARE GRID BEARINGS OF THE COLORADO STATE PLANE COORDINATE SYSTEM, NORTH ZONE, NORTH AMERICAN DATUM 1983/2007.
- 3) GROUND ELEVATIONS ARE BASED ON A GPS OBSERVATION (NAVD 88 DATUM).
- 4) ALL DISTANCES SHOWN ARE FIELD MEASURED UNLESS OTHERWISE NOTED.
- 5) THE NEAREST EXISTING WELL IS: HETTINGER D30-3 453' SOUTHWEST.
- 6) IMPROVEMENTS: SEE LOCATION DRAWING EXHIBIT FOR ALL VISIBLE IMPROVEMENTS WITHIN 600' OF WELL HEAD.
- 7) SURFACE USE: SEASONAL AGRICULTURAL FIELD.
- 8) OPERATOR NAME: B. BIRCH.

NOTICE: According to Colorado law you MUST commence any legal action based upon any defect in this WLC within three years after you first discover such defect. In no event may any action based upon any defect in this WLC be commenced more than ten years from this said date of the certification show hereon.

SURFACE HOLE:
LATITUDE: 40.202993° N
LONGITUDE: 104.595168° W
PDOP: 1.1
1/4, 1/4: NE1/4NW1/4
NEAREST PROPERTY LINE: 154' N

BOTTOM HOLE:
LATITUDE: 40.203599° N
LONGITUDE: 104.603004° W

LEGEND

- - FOUND/SET SURVEY MONUMENT PER MONUMENT RECORD EXCEPTIONS NOTED
- - CALCULATED SURVEY MONUMENT POSITION
- (C) - CALCULATED DIMENSION

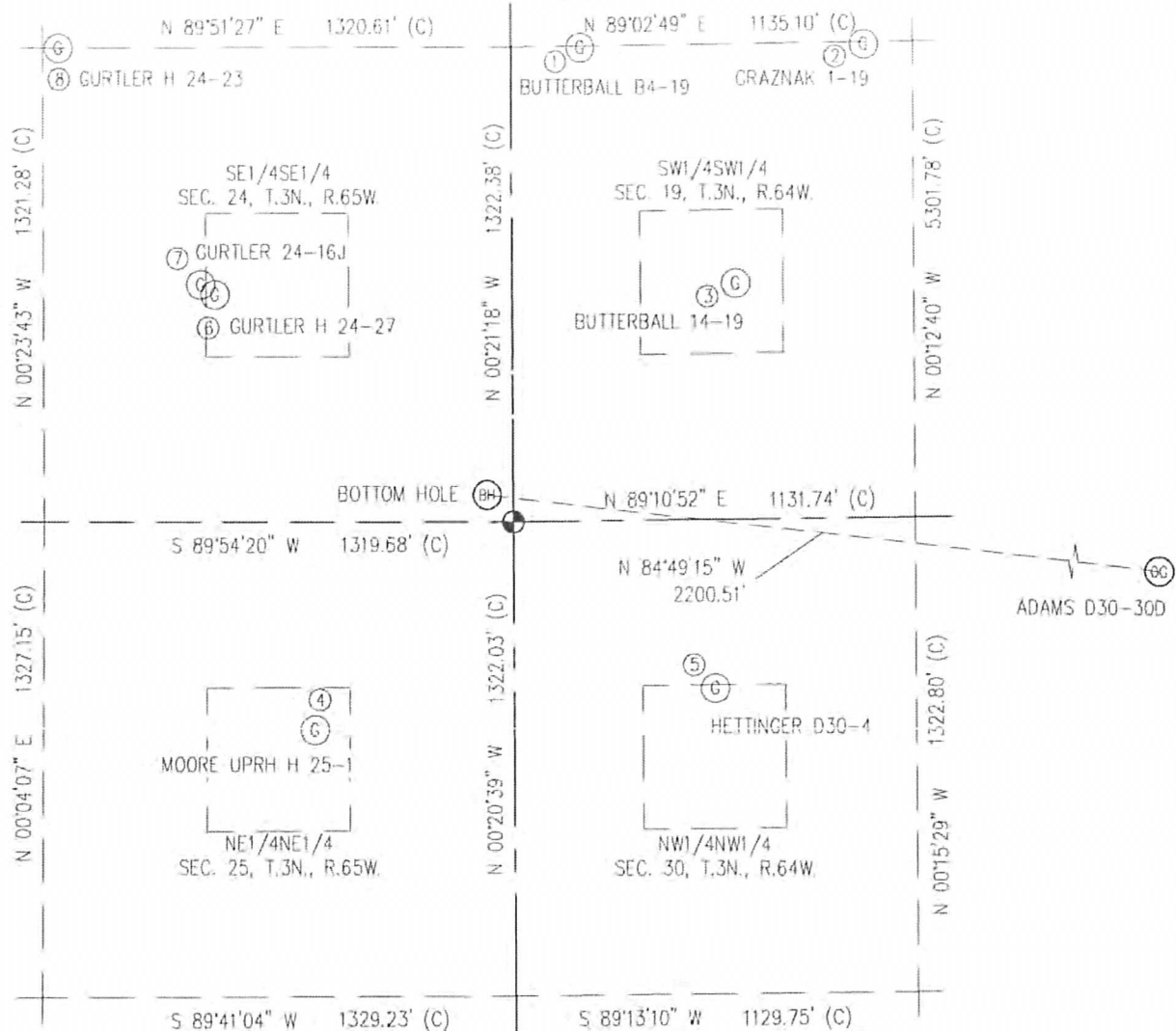


Steven A. Lund
Professional Land Surveyor Registration No. 34995
State of Colorado
FOR AND ON BEHALF OF BASELINE ENGINEERING CORP.

Completed
2/10/2012

SITE SKETCH

ADAMS D30-30D

SECTION 30
TOWNSHIP 3 NORTH
RANGE 64 WEST

① BUTTERBALL B4-19
SW1/4SW1/4
1318' FSL
200' FWL
EL=4783'
LATITUDE: 40.207012° N
LONGITUDE: 104.602004° W
PDOP: 5.3

② GRAZNAK 1-19
SW1/4SW1/4
1318' FSL
996' FWL
EL=4781'
LATITUDE: 40.207020° N
LONGITUDE: 104.599152° W
PDOP: 7.5

③ BUTTERBALL 14-19
SW1/4SW1/4
658' FSL
635' FWL
EL=4783'
LATITUDE: 40.205204° N
LONGITUDE: 104.600455° W
PDOP: 1.5

④ MOORE UPRH H 25-1
NE1/4NE1/4
580' FNL
560' FEL
EL=4787'
LATITUDE: 40.201813° N
LONGITUDE: 104.604751° W
PDOP: 1.3

⑤ HETTINGER D30-4
NW1/4NW1/4
470' FNL
570' FWL
EL=4785'
LATITUDE: 40.202107° N
LONGITUDE: 104.600704° W
PDOP: 1.9

⑥ GURTLER H 24-27
SE1/4SE1/4
634' FSL
835' FEL
EL=4796'
LATITUDE: 40.205152° N
LONGITUDE: 104.605717° W
PDOP: 1.3

⑦ GURTLER 24-16J
SE1/4SE1/4
662' FNL
874' FWL
EL=4796'
LATITUDE: 40.205229° N
LONGITUDE: 104.605858° W
PDOP: 1.3

⑧ GURTLER H 24-23
SE1/4SE1/4
1321' FNL
1276' FWL
EL=4800'
LATITUDE: 40.207045° N
LONGITUDE: 104.607286° W
PDOP: 1.3

NOTES:

- THIS SKETCH DOES NOT REPRESENT A BOUNDARY SURVEY.
- THE DATUM FOR THE LATITUDES AND LONGITUDES ON THIS SKETCH IS NAD83.

0 500
Scale 1" = 500 ft

