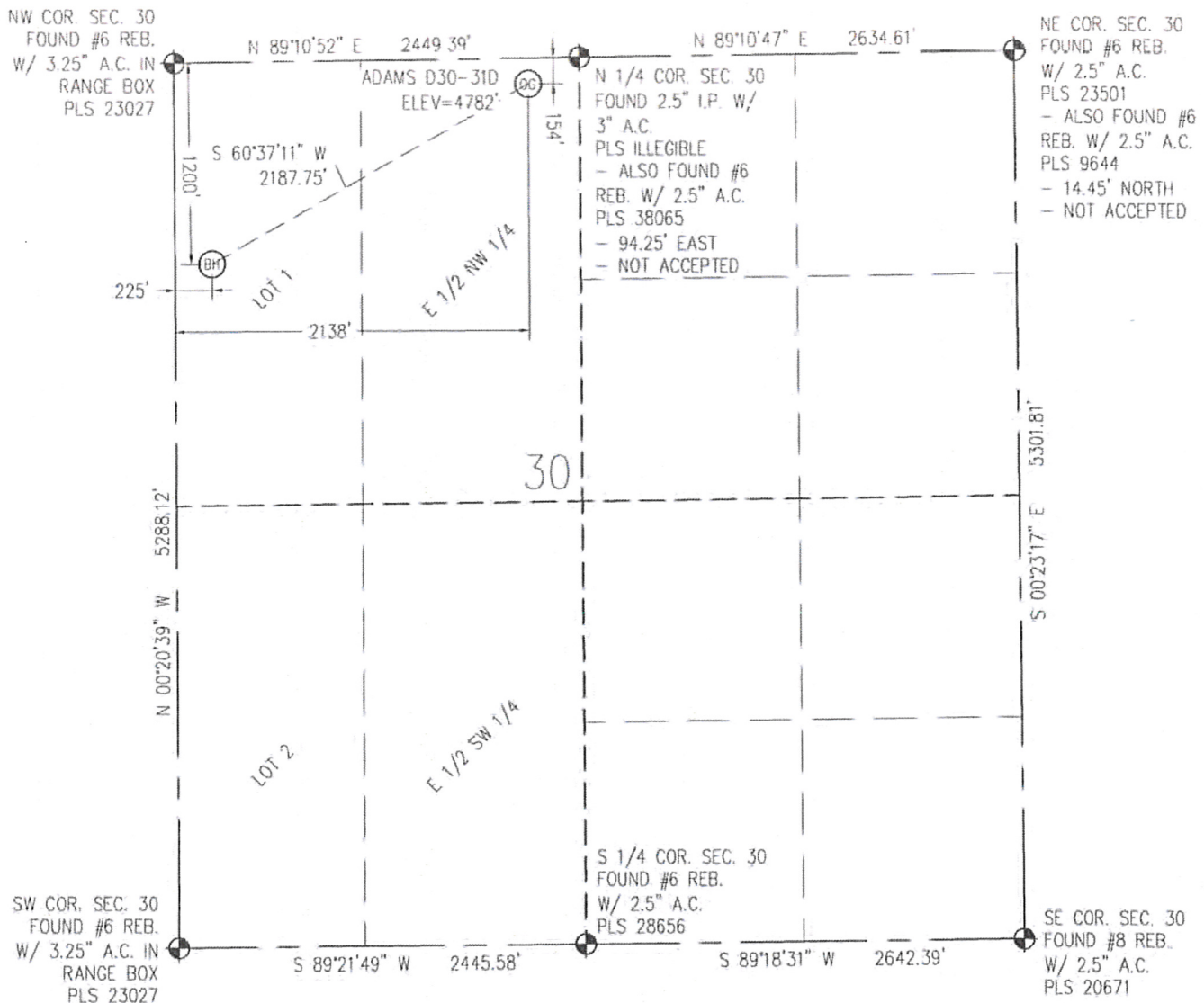


**WELL LOCATION CERTIFICATE**  
THIS MAP DOES NOT REPRESENT A BOUNDARY SURVEY

IN ACCORDANCE WITH A REQUEST FROM CJ PIETRI - NOBLE ENERGY, BASELINE ENGINEERING CORP. HAS DETERMINED THE LOCATION OF THE ADAMS D30-31D TO BE 154' FNL AND 2,138' FWL, AS MEASURED AT NINETY (90) DEGREES FROM THE SECTION LINE OF SECTION 30, TOWNSHIP 3 NORTH, RANGE 64 WEST AND THE BOTTOM HOLE LOCATION TO BE 1,200' FNL AND 225' FWL OF SECTION 30, TOWNSHIP 3 NORTH, RANGE 64 WEST, 6TH PRINCIPAL MERIDIAN, WELD COUNTY, COLORADO.

I HEREBY CERTIFY THAT THIS WELL LOCATION CERTIFICATE WAS PREPARED BY ME, OR UNDER MY DIRECT SUPERVISION, THAT THE FIELD WORK WAS COMPLETED ON 2/7/2012, THAT IT IS NOT A LAND SURVEY PLAT OR AN IMPROVEMENT SURVEY PLAT, AND THAT IT IS NOT TO BE RELIED UPON FOR ESTABLISHMENT OF FENCE, BUILDING, OR OTHER FUTURE IMPROVEMENT LINES.

Scale 1" = 1000 ft

## NOTES:

- 1) LAT/LONG SHOWN ARE BASED ON A GPS OBSERVATION (NAD83).
- 2) BEARINGS SHOWN ARE GRID BEARINGS OF THE COLORADO STATE PLANE COORDINATE SYSTEM, NORTH ZONE, NORTH AMERICAN DATUM 1983/2007.
- 3) GROUND ELEVATIONS ARE BASED ON A GPS OBSERVATION (NAVD 88 DATUM).
- 4) ALL DISTANCES SHOWN ARE FIELD MEASURED UNLESS OTHERWISE NOTED.
- 5) THE NEAREST EXISTING WELL IS: HETTINGER D30-3 470' SOUTHWEST.
- 6) IMPROVEMENTS: SEE LOCATION DRAWING EXHIBIT FOR ALL VISIBLE IMPROVEMENTS WITHIN 600' OF WELL HEAD.
- 7) SURFACE USE: SEASONAL AGRICULTURAL FIELD.
- 8) OPERATOR NAME: B. BIRCH.

NOTICE: According to Colorado law you MUST commence any legal action based upon any defect in this W.L.C. within three years after you first discover such defect. In no event may any action based upon any defect in this W.L.C. be commenced more than ten years from this said date of the certification shown hereon.

SURFACE HOLE:  
LATITUDE: 40.202993° N  
LONGITUDE: 104.595088° W  
PDOP: 1.1  
1/4, 1/4: NE1/4NW1/4  
NEAREST PROPERTY LINE: 154' N

BOTTOM HOLE:  
LATITUDE: 40.200101° N  
LONGITUDE: 104.601949° W

## LEGEND

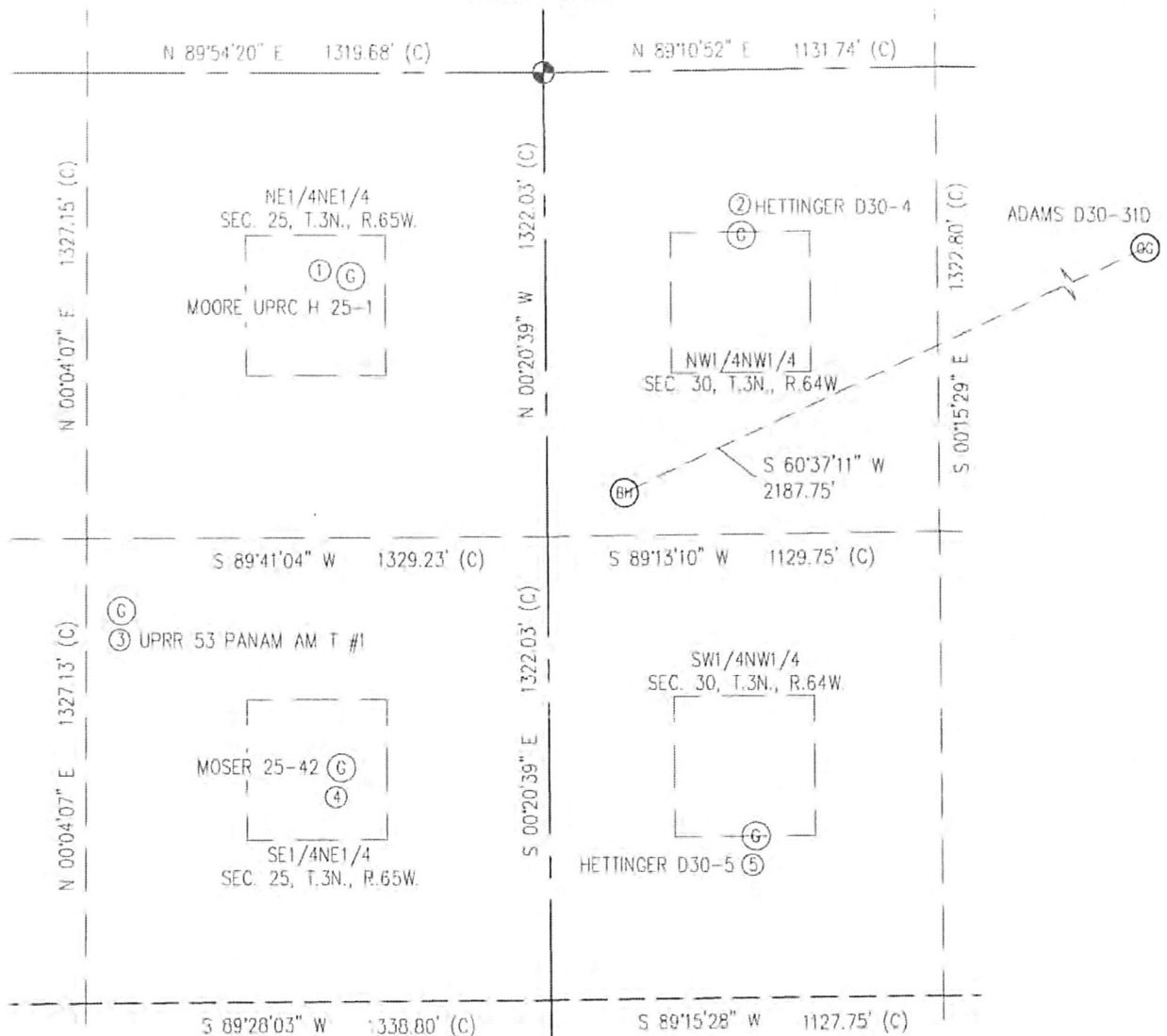
- - FOUND/SET SURVEY MONUMENT PER MONUMENT RECORD EXCEPTIONS NOTED
- - CALCULATED SURVEY MONUMENT POSITION
- (C) - CALCULATED DIMENSION

Steven A. Lund  
Professional Land Surveyor Registration No. 34995  
State of Colorado  
FOR AND ON BEHALF OF BASELINE ENGINEERING CORP.

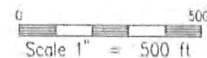
Completed  
2/10/2012



JOB : NOB03N64W30-02



- |  |  |   |   |
|--|--|---|---|
| ①  | ②  | ③   | ④   |
| MOORE UPRC H 25-1<br>NE1/4NE1/4<br>580' FNL<br>560' FEL<br>EL=4787'<br>LATITUDE: 40.201813° N<br>LONGITUDE: 104.604751° W<br>PDOP: 1.3 | HETTINGER D30-4<br>NW1/4NW1/4<br>470' FNL<br>570' FWL<br>EL=4785'<br>LATITUDE: 40.202107° N<br>LONGITUDE: 104.600704° W<br>PDOP: 1.9 | UPRR 53 PANAM AM T #1<br>SE1/4NE1/4<br>1533' FNL<br>1230' FEL<br>EL=4795'<br>LATITUDE: 40.1992121° N<br>LONGITUDE: 104.607162° W<br>PDOP: 1.2 | MOSER 25-42<br>SE1/4NE1/4<br>1981' FNL<br>597' FEL<br>EL=4792'<br>LATITUDE: 40.197969° N<br>LONGITUDE: 104.604901° N<br>PDOP: 1.2 |



NOTES:

1) THIS SKETCH DOES NOT REPRESENT A  
BOUNDARY SURVEY.

2) THE DATUM FOR THE LATITUDES AND LONGITUDES ON THIS SKETCH IS NAD83.