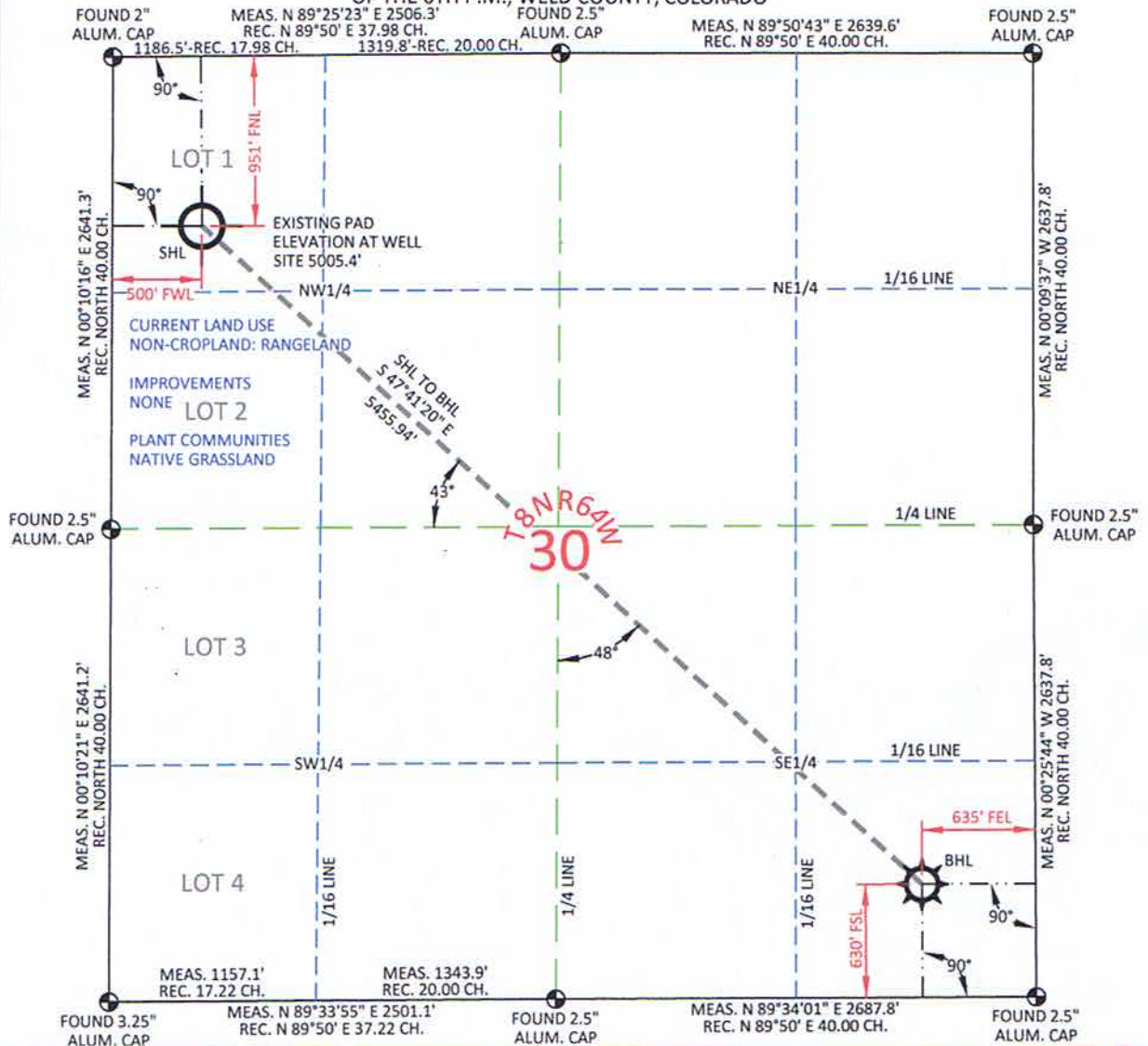


FOUND 2" MEAS. N 89° 25' 23" E 2506.3' FOUND 2.5" MEAS. N 89° 50' 43" E 2639.6' FOUND 2.5"  
ALUM. CAP REC. N 89° 50' E 37.98 CH. ALUM. CAP REC. N 89° 50' E 40.00 CH. ALUM. CAP



BOTTOM HOLE  
(AS-DRILLED)

STATE PLANE CO. NORTH	NAD 27 NAD 83 NAD 27 NAD 83 NAD 27 NAD 83 NAD 27 NAD 83 NAD 27 NAD 83 NAD 27 NAD 83	LAT.	40.635535"	GEOGRAPHIC DEC. DEG.	LAT.	40.625341"
		LONG.	104.599613"		LONG.	104.585213"
		LAT.	40.635554"		LONG.	40.625360"
		LONG.	104.599097"		LONG.	104.584697"
		LAT.	40°38'07.93"		LAT.	40°37'31.23"
		LONG.	104°35'58.61"		LONG.	104°35'06.77"
STATE PLANE CO. NORTH	NAD 27 NAD 83 NAD 27 NAD 83 NAD 27 NAD 83 NAD 27 NAD 83 NAD 27 NAD 83 NAD 27 NAD 83	LAT.	40°38'07.99"	GEOGRAPHIC DEC. MIN. SEC.	LAT.	40°37'31.30"
		LONG.	104°35'56.75"		LONG.	104°35'04.91"
		NORTH	1475636.13		NORTH	1471963.44
		EAST	3249891.59		EAST	3253926.26
		NORTH	475636.20		NORTH	471963.59
		EAST	2250041.47		EAST	2254076.06
FOOTAGE: 500' FWL - 951' FNL				FOOTAGE: 635' FEL - 630' FSL		
MEASURE DATE		INSTRUMENT OPERATOR		POOP		SHL GRND LEVEL
12/12/2011		ALLEN BLATTEL		3.9		5005.4'

I, Rodney A. Walters, Professional Land Surveyor, CO. LS #16847 hereby certify that (in accordance with a request from Erin Bibeau with Marathon Oil Co, 5555 San Felipe, Houston, TX 77056) I and/or personnel under my direction made a survey on the 12th day of December 2011, for the Surface Hole Location and Elevation of Marathon Oil Co. OWL CREEK 8-64-30-1H being located within Lot 1, Section 30, T8N, R64W, and the Bottom Hole Location being located in the SE1/4 SE1/4 of Section 30, T8N, R64W, both being of the 6th P.M., Weld County, State of Colorado.

- All bearings and distances are **GRID**, based on the Colorado State Plane Coordinate System, North Zone, North American Datum 1983 from GPS observations occupying a WHS control point (5/8" rebar) and having the Location and Elevation derived from an Opus Solution.
- Vertical Datum used is of NAVD 88.
- Record Bearings and Distances as shown are based on the General Land Office Survey plot approved on the 20th day of October 1870.
- Geographic coordinates for the bottom hole location were taken from the wellpath report prepared by Baker Hughes for Owl Creek 8-64-30-1H and dated 12/20/2011.






**CONFIDENTIALITY NOTES:**

The information contained in this plat is legally privileged and confidential information intended only for the use of the recipients. If you are not the intended recipients, you are hereby notified that any use, dissemination, distribution or copying of this information is strictly prohibited.



50 EAST SECOND NORTH PHONE: 307-875-3638  
GREEN RIVER, WY 307-875-3639

-  FOUND CORNER
-  CALCULATED CORNER
-  NOTHING FOUND

OWL CREEK  
8-64-30-1H  
WITHIN LOT 1 OF  
SECTION 30,  
T 8 N, R 64 W,  
6TH PM.  
WELD COUNTY,

AS-DRILLED  
WELL LOCATION PLAT

SCALE: 1"=1000'	EXHIBIT "A"
DATE: 04/27/2012	SHEET 1 OF 1

\\CAD1-HP\Data\2011001\_MOC\_CHEYENNE\_WELDRASBUILTS\Owl Creek 8-64-30-1H\Owl Creek 8-64-30-1H AS-BUILT.dwg