

MARATHON OIL COMPANY

Location: COLORADO Slot: SLOT#01 OWL CREEK 8-64-30-1A (951'FNL & 500'FWL, SEC.30)
Field: WELD COUNTY (NAD 83, GRID NORTH) Well: OWL CREEK 8-64-30-1A
Facility: SEC.30-T8N-R64W Wellbore: OWL CREEK 8-64-30-1A pwb

Plot reference wellpath is OWL CREEK 8-64-30-1A (REV-A.0) PWP

True vertical depths are referenced to H&P 321 (RKB)

Grid System: NAD83 / Lambert Colorado SP, Northern Zone (501), US feet

Measured depths are referenced to H&P 321 (RKB)

North Reference: Grid north

H&P 321 (RKB) to Mean Sea Level: 5036 feet

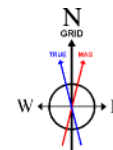
Scale: True distance

Mean Sea Level to Mud line (At Slot: SLOT#01 OWL CREEK 8-64-30-1A (951'FNL & 500'FWL, SEC.30)): 0 feet

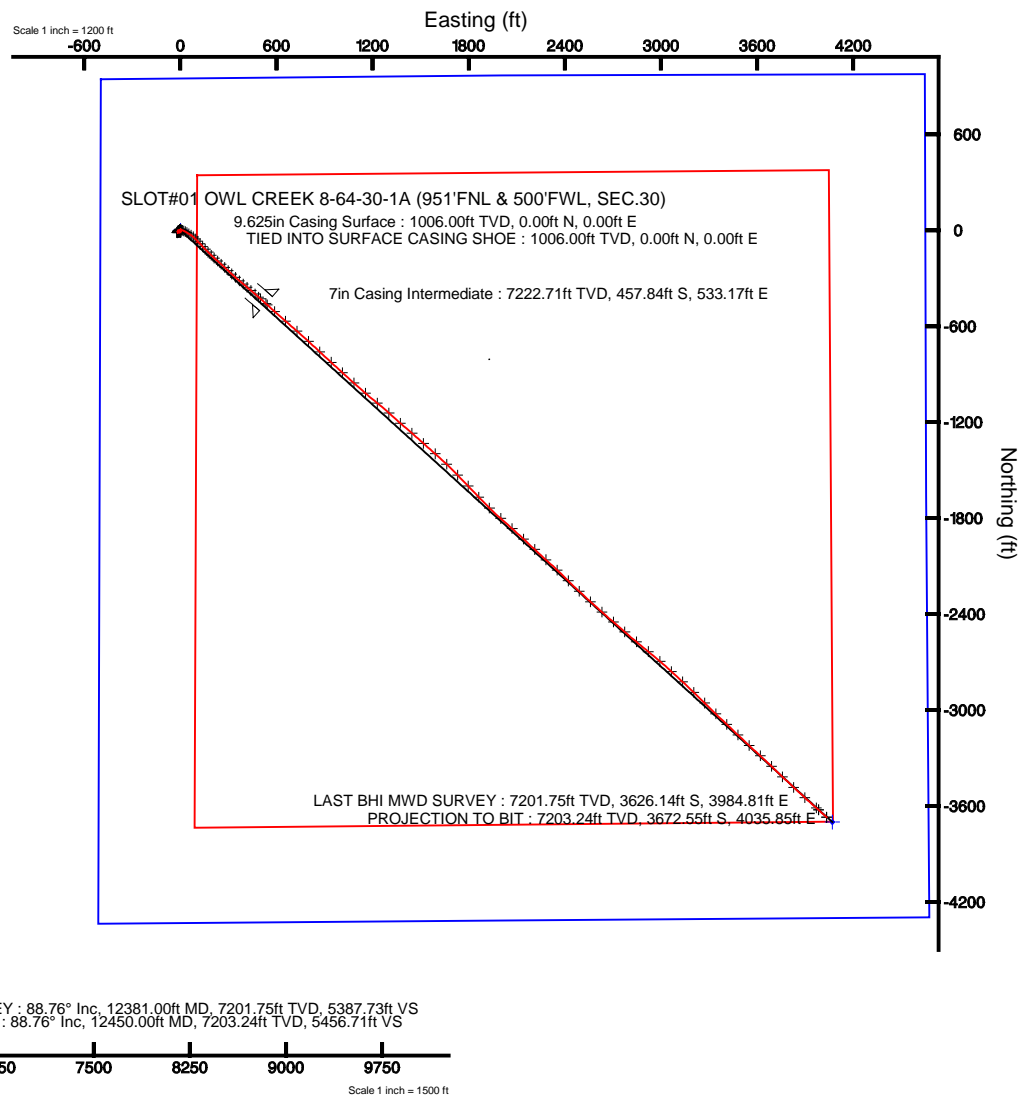
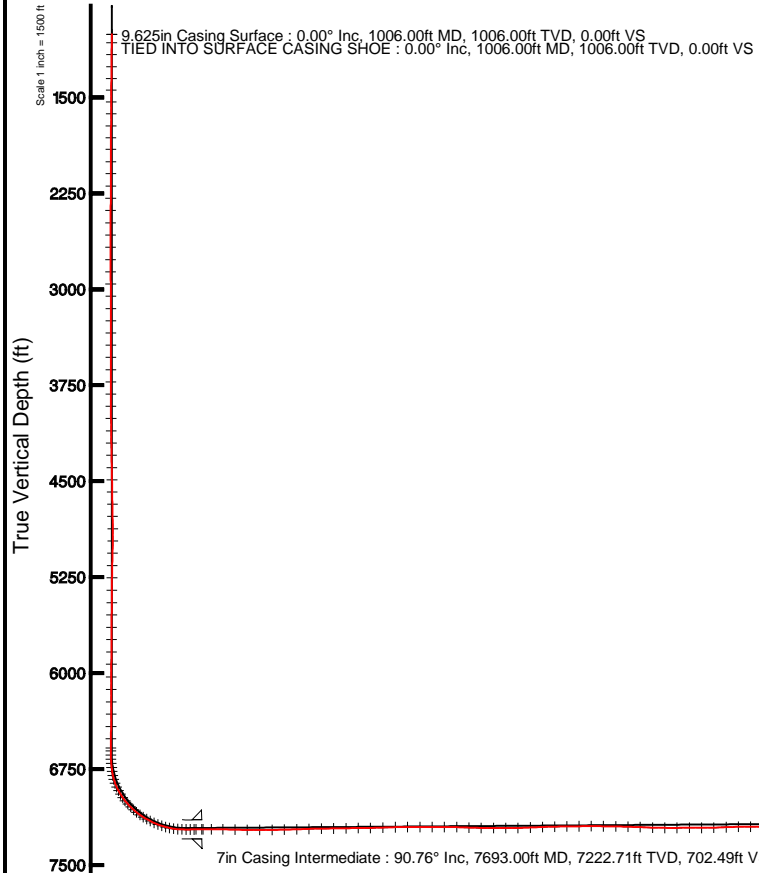
Depths are in feet

Coordinates are in feet referenced to Slot

Created by: cookdamm on 12/20/2011



BGGM (1945.0 to 2012.0) Dip: 67.27° Field: 53242.5 nT
Magnetic North is 8.69 degrees East of True North (at 11/7/2011)
Grid North is 0.58 degrees East of True North
To correct azimuth from True to Grid subtract 0.58 degrees
To correct azimuth from Magnetic to Grid add 8.11 degrees
For example: if the Magnetic North Azimuth = 90 degs, then the Grid North Azimuth = 90 + 8.11 = 98.11



Azimuth 132.28° with reference 0.00 N, 0.00 E



Actual Wellpath Report

OWL CREEK 8-64-30-1A AWP

Page 1 of 6



REFERENCE WELLPATH IDENTIFICATION

Operator	MARATHON OIL COMPANY	Slot	SLOT#01 OWL CREEK 8-64-30-1A (951'FNL & 500'FWL, SEC.30)
Area	COLORADO	Well	OWL CREEK 8-64-30-1A
Field	WELD COUNTY (NAD 83, GRID NORTH)	Wellbore	OWL CREEK 8-64-30-1A AWB
Facility	SEC.30-T8N-R64W		

REPORT SETUP INFORMATION

Projection System	NAD83 / Lambert Colorado SP, Northern Zone (501), US feet	Software System	WellArchitect® 3.0.1
North Reference	Grid	User	Cookdanm
Scale	0.999979	Report Generated	12/20/2011 at 3:27:14 PM
Convergence at slot	0.58° East	Database/Source file	WA_Denver/OWL_CREEK_8-64-30-1A_AWB.xml

WELLPATH LOCATION

	Local coordinates		Grid coordinates		Geographic coordinates	
	North[ft]	East[ft]	Easting[US ft]	Northing[US ft]	Latitude	Longitude
Slot Location	0.37	-0.20	3249890.33	1475635.95	40°38'07.924"N	104°35'58.623"W
Facility Reference Pt			3249890.53	1475635.58	40°38'07.920"N	104°35'58.620"W
Field Reference Pt			3476081.76	1512960.14	40°43'43.704"N	103°46'55.829"W

WELLPATH DATUM

Calculation method	Minimum curvature	H&P 321 (RKB) to Facility Vertical Datum	5036.00ft
Horizontal Reference Pt	Slot	H&P 321 (RKB) to Mean Sea Level	5036.00ft
Vertical Reference Pt	H&P 321 (RKB)	H&P 321 (RKB) to Mud Line at Slot (SLOT#01 OWL CREEK 8-64-30-1A (951'FNL & 500'FWL, SEC.30))	5036.00ft
MD Reference Pt	H&P 321 (RKB)	Section Origin	N 0.00, E 0.00 ft
Field Vertical Reference	Mean Sea Level	Section Azimuth	132.28°



Actual Wellpath Report

OWL CREEK 8-64-30-1A AWP

Page 2 of 6



REFERENCE WELLPATH IDENTIFICATION

Operator	MARATHON OIL COMPANY	Slot	SLOT#01 OWL CREEK 8-64-30-1A (951'FNL & 500'FWL, SEC.30)
Area	COLORADO	Well	OWL CREEK 8-64-30-1A
Field	WELD COUNTY (NAD 83, GRID NORTH)	Wellbore	OWL CREEK 8-64-30-1A AWB
Facility	SEC.30-T8N-R64W		

WELLPATH DATA (146 stations)

MD [ft]	Inclination [°]	Azimuth [°]	TVD [ft]	Vert Sect [ft]	North [ft]	East [ft]	Grid East [US ft]	Grid North [US ft]	Latitude	Longitude	DLS [°/100ft]	Comments
1006.00	0.000	246.900	1006.00	0.00	0.00	0.00	3249890.33	1475635.95	40°38'07.924"N	104°35'58.623"W	0.00	TIED INTO SURFACE CASING SHOE
1071.00	0.770	246.900	1071.00	-0.18	-0.17	-0.40	3249889.93	1475635.78	40°38'07.922"N	104°35'58.628"W	1.18	
1164.00	0.910	257.500	1163.99	-0.87	-0.58	-1.70	3249888.63	1475635.37	40°38'07.918"N	104°35'58.645"W	0.22	
1258.00	0.960	269.300	1257.98	-1.87	-0.75	-3.21	3249887.12	1475635.20	40°38'07.917"N	104°35'58.664"W	0.21	
1350.00	0.650	267.100	1349.97	-2.81	-0.78	-4.51	3249885.82	1475635.17	40°38'07.916"N	104°35'58.681"W	0.34	
1442.00	0.470	249.800	1441.96	-3.35	-0.94	-5.38	3249884.95	1475635.01	40°38'07.915"N	104°35'58.692"W	0.27	
1533.00	0.720	263.200	1532.96	-3.90	-1.14	-6.30	3249884.03	1475634.81	40°38'07.913"N	104°35'58.704"W	0.31	
1627.00	0.440	285.100	1626.95	-4.60	-1.11	-7.23	3249883.10	1475634.84	40°38'07.913"N	104°35'58.717"W	0.37	
1721.00	0.770	283.100	1720.95	-5.48	-0.88	-8.20	3249882.13	1475635.07	40°38'07.916"N	104°35'58.729"W	0.35	
1813.00	0.380	274.600	1812.94	-6.26	-0.71	-9.10	3249881.23	1475635.24	40°38'07.918"N	104°35'58.741"W	0.43	
1905.00	0.300	266.100	1904.94	-6.67	-0.70	-9.65	3249880.68	1475635.25	40°38'07.918"N	104°35'58.748"W	0.10	
2001.00	0.100	51.000	2000.94	-6.83	-0.67	-9.83	3249880.50	1475635.28	40°38'07.918"N	104°35'58.750"W	0.40	
2095.00	0.220	287.370	2094.94	-6.98	-0.56	-9.94	3249880.39	1475635.39	40°38'07.919"N	104°35'58.752"W	0.31	
2191.00	0.190	273.440	2190.94	-7.27	-0.50	-10.28	3249880.05	1475635.45	40°38'07.920"N	104°35'58.756"W	0.06	
2288.00	0.460	282.450	2287.94	-7.73	-0.40	-10.82	3249879.51	1475635.55	40°38'07.921"N	104°35'58.763"W	0.28	
2383.00	0.690	256.990	2382.93	-8.39	-0.45	-11.75	3249878.58	1475635.50	40°38'07.920"N	104°35'58.775"W	0.36	
2479.00	0.540	225.450	2478.93	-8.74	-0.90	-12.63	3249877.70	1475635.05	40°38'07.916"N	104°35'58.787"W	0.38	
2575.00	1.120	231.420	2574.92	-8.92	-1.80	-13.69	3249876.64	1475634.15	40°38'07.907"N	104°35'58.800"W	0.61	
2671.00	0.830	220.160	2670.90	-9.04	-2.92	-14.87	3249875.46	1475633.03	40°38'07.896"N	104°35'58.816"W	0.36	
2767.00	0.820	203.740	2766.89	-8.80	-4.08	-15.60	3249874.73	1475631.87	40°38'07.885"N	104°35'58.825"W	0.25	
2862.00	0.700	202.120	2861.89	-8.38	-5.24	-16.09	3249874.24	1475630.71	40°38'07.874"N	104°35'58.832"W	0.13	
2958.00	0.590	170.320	2957.88	-7.79	-6.27	-16.23	3249874.10	1475629.68	40°38'07.863"N	104°35'58.834"W	0.38	
3054.00	0.850	201.720	3053.87	-7.15	-7.42	-16.41	3249873.92	1475628.53	40°38'07.852"N	104°35'58.836"W	0.48	
3150.00	0.970	224.800	3149.86	-6.93	-8.65	-17.24	3249873.09	1475627.30	40°38'07.840"N	104°35'58.847"W	0.40	
3246.00	0.660	225.250	3245.85	-7.00	-9.62	-18.21	3249872.12	1475626.33	40°38'07.830"N	104°35'58.860"W	0.32	
3341.00	0.570	239.130	3340.85	-7.16	-10.25	-19.00	3249871.33	1475625.70	40°38'07.824"N	104°35'58.870"W	0.18	
3436.00	0.550	197.760	3435.84	-7.11	-10.92	-19.55	3249870.78	1475625.03	40°38'07.818"N	104°35'58.877"W	0.42	
3532.00	0.440	217.620	3531.84	-6.89	-11.65	-19.91	3249870.42	1475624.30	40°38'07.811"N	104°35'58.882"W	0.21	
3628.00	0.580	201.870	3627.83	-6.69	-12.40	-20.32	3249870.01	1475623.55	40°38'07.803"N	104°35'58.888"W	0.21	
3724.00	0.430	237.120	3723.83	-6.61	-13.04	-20.80	3249869.53	1475622.91	40°38'07.797"N	104°35'58.894"W	0.35	
3820.00	0.280	229.060	3819.83	-6.73	-13.39	-21.28	3249869.05	1475622.56	40°38'07.793"N	104°35'58.900"W	0.16	
3915.00	0.460	147.870	3914.83	-6.39	-13.87	-21.25	3249869.08	1475622.08	40°38'07.789"N	104°35'58.900"W	0.53	
4010.00	0.590	100.350	4009.82	-5.61	-14.28	-20.57	3249869.76	1475621.67	40°38'07.785"N	104°35'58.891"W	0.46	
4106.00	1.310	77.390	4105.81	-4.56	-14.13	-19.01	3249871.32	1475621.82	40°38'07.786"N	104°35'58.871"W	0.83	
4202.00	1.560	83.970	4201.78	-3.06	-13.75	-16.64	3249873.69	1475622.20	40°38'07.789"N	104°35'58.840"W	0.31	
4298.00	1.540	74.810	4297.74	-1.50	-13.28	-14.10	3249876.23	1475622.67	40°38'07.794"N	104°35'58.807"W	0.26	
4394.00	1.680	81.170	4393.71	0.08	-12.72	-11.46	3249878.87	1475623.23	40°38'07.799"N	104°35'58.773"W	0.24	
4489.00	1.570	80.030	4488.67	1.75	-12.28	-8.80	3249881.53	1475623.67	40°38'07.803"N	104°35'58.738"W	0.12	
4585.00	1.680	76.280	4584.63	3.34	-11.72	-6.14	3249884.19	1475624.23	40°38'07.808"N	104°35'58.704"W	0.16	
4681.00	1.720	79.650	4680.59	5.00	-11.13	-3.36	3249886.97	1475624.82	40°38'07.814"N	104°35'58.668"W	0.11	
4776.00	1.590	77.540	4775.55	6.63	-10.59	-0.67	3249889.66	1475625.36	40°38'07.819"N	104°35'58.633"W	0.15	
4872.00	0.570	81.190	4871.53	7.70	-10.23	1.10	3249891.43	1475625.72	40°38'07.823"N	104°35'58.610"W	1.06	
4968.00	0.430	6.910	4967.53	7.79	-9.80	1.62	3249891.95	1475626.15	40°38'07.827"N	104°35'58.603"W	0.64	
5063.00	1.490	315.170	5062.51	6.35	-8.57	0.79	3249891.12	1475627.38	40°38'07.839"N	104°35'58.613"W	1.34	
5160.00	1.420	320.620	5159.48	3.90	-6.74	-0.86	3249889.47	1475629.21	40°38'07.857"N	104°35'58.635"W	0.16	



Actual Wellpath Report

OWL CREEK 8-64-30-1A AWP

Page 3 of 6



REFERENCE WELLPATH IDENTIFICATION

Operator	MARATHON OIL COMPANY	Slot	SLOT#01 OWL CREEK 8-64-30-1A (951'FNL & 500'FWL, SEC.30)
Area	COLORADO	Well	OWL CREEK 8-64-30-1A
Field	WELD COUNTY (NAD 83, GRID NORTH)	Wellbore	OWL CREEK 8-64-30-1A AWB
Facility	SEC.30-T8N-R64W		

WELLPATH DATA (146 stations)

MD [ft]	Inclination [°]	Azimuth [°]	TVD [ft]	Vert Sect [ft]	North [ft]	East [ft]	Grid East [US ft]	Grid North [US ft]	Latitude	Longitude	DLS [°/100ft]	Comments
5256.00	1.240	354.690	5255.46	1.96	-4.79	-1.71	3249888.62	1475631.16	40°38'07.877"N	104°35'58.645"W	0.83	
5354.00	1.020	13.090	5353.44	0.75	-2.88	-1.61	3249888.72	1475633.07	40°38'07.895"N	104°35'58.644"W	0.43	
5451.00	1.010	18.920	5450.42	-0.01	-1.24	-1.14	3249889.19	1475634.71	40°38'07.912"N	104°35'58.637"W	0.11	
5547.00	0.570	15.290	5546.41	-0.56	0.03	-0.74	3249889.59	1475635.98	40°38'07.924"N	104°35'58.632"W	0.46	
5644.00	0.630	13.820	5643.41	-1.04	1.01	-0.48	3249889.85	1475636.96	40°38'07.934"N	104°35'58.629"W	0.06	
5740.00	0.810	9.850	5739.40	-1.65	2.19	-0.24	3249890.09	1475638.14	40°38'07.945"N	104°35'58.625"W	0.19	
5837.00	0.700	0.510	5836.39	-2.41	3.46	-0.12	3249890.21	1475639.41	40°38'07.958"N	104°35'58.624"W	0.17	
5933.00	0.340	340.000	5932.39	-3.06	4.31	-0.21	3249890.12	1475640.26	40°38'07.966"N	104°35'58.625"W	0.42	
6031.00	0.180	317.070	6030.39	-3.47	4.70	-0.42	3249889.91	1475640.65	40°38'07.970"N	104°35'58.627"W	0.19	
6129.00	0.380	317.120	6128.39	-3.95	5.05	-0.74	3249889.59	1475641.00	40°38'07.974"N	104°35'58.631"W	0.20	
6226.00	0.250	291.810	6225.39	-4.46	5.36	-1.16	3249889.17	1475641.31	40°38'07.977"N	104°35'58.637"W	0.19	
6321.00	0.290	263.830	6320.38	-4.82	5.41	-1.59	3249888.74	1475641.36	40°38'07.977"N	104°35'58.642"W	0.14	
6419.00	0.380	305.670	6418.38	-5.31	5.58	-2.10	3249888.23	1475641.53	40°38'07.979"N	104°35'58.649"W	0.26	
6515.00	0.440	288.900	6514.38	-5.96	5.88	-2.71	3249887.62	1475641.83	40°38'07.982"N	104°35'58.657"W	0.14	
6588.00	0.530	312.460	6587.38	-6.55	6.20	-3.22	3249887.11	1475642.15	40°38'07.985"N	104°35'58.663"W	0.30	
6611.00	0.330	290.940	6610.38	-6.72	6.30	-3.36	3249886.97	1475642.25	40°38'07.986"N	104°35'58.665"W	1.10	
6643.00	0.410	180.350	6642.38	-6.73	6.21	-3.45	3249886.88	1475642.16	40°38'07.985"N	104°35'58.666"W	1.91	
6675.00	2.600	122.380	6674.36	-5.94	5.71	-2.84	3249887.49	1475641.66	40°38'07.980"N	104°35'58.659"W	7.52	
6707.00	4.900	115.260	6706.29	-3.92	4.74	-0.99	3249889.34	1475640.69	40°38'07.971"N	104°35'58.635"W	7.32	
6740.00	6.880	110.580	6739.12	-0.73	3.44	2.14	3249892.47	1475639.39	40°38'07.957"N	104°35'58.594"W	6.17	
6771.00	9.230	109.360	6769.81	3.28	1.97	6.22	3249896.55	1475637.92	40°38'07.942"N	104°35'58.542"W	7.60	
6803.00	12.720	109.440	6801.22	8.89	-0.06	11.97	3249902.30	1475635.89	40°38'07.922"N	104°35'58.467"W	10.91	
6835.00	16.810	112.390	6832.16	16.50	-2.99	19.57	3249909.90	1475632.96	40°38'07.892"N	104°35'58.369"W	12.99	
6868.00	20.750	117.130	6863.40	26.63	-7.48	29.19	3249919.52	1475628.47	40°38'07.847"N	104°35'58.245"W	12.79	
6899.00	24.620	120.200	6891.99	38.25	-13.23	39.66	3249929.99	1475622.72	40°38'07.789"N	104°35'58.110"W	13.05	
6931.00	28.520	122.930	6920.61	52.31	-20.74	51.84	3249942.17	1475615.21	40°38'07.714"N	104°35'57.953"W	12.77	
6963.00	32.120	125.230	6948.23	68.30	-29.81	65.21	3249955.54	1475606.14	40°38'07.623"N	104°35'57.781"W	11.82	
6995.00	34.730	129.370	6974.94	85.85	-40.50	79.21	3249969.54	1475595.45	40°38'07.516"N	104°35'57.601"W	10.83	
7026.00	38.220	134.150	6999.87	104.26	-52.79	92.92	3249983.25	1475583.16	40°38'07.393"N	104°35'57.424"W	14.51	
7059.00	42.070	137.600	7025.09	125.48	-68.07	107.71	3249998.04	1475567.88	40°38'07.240"N	104°35'57.235"W	13.47	
7091.00	45.380	137.740	7048.21	147.50	-84.42	122.60	3250012.93	1475551.53	40°38'07.077"N	104°35'57.044"W	10.35	
7122.00	47.820	136.660	7069.51	169.94	-100.94	137.91	3250028.23	1475535.01	40°38'06.912"N	104°35'56.847"W	8.27	
7154.00	50.910	135.800	7090.35	194.16	-118.47	154.71	3250045.03	1475517.48	40°38'06.738"N	104°35'56.632"W	9.87	
7186.00	54.620	134.200	7109.71	219.61	-136.48	172.72	3250063.05	1475499.48	40°38'06.558"N	104°35'56.400"W	12.26	
7218.00	58.550	134.100	7127.33	246.30	-155.08	191.88	3250082.21	1475480.88	40°38'06.372"N	104°35'56.154"W	12.28	
7248.00	61.050	132.320	7142.42	272.22	-172.82	210.78	3250101.11	1475463.13	40°38'06.195"N	104°35'55.911"W	9.78	
7280.00	63.110	131.610	7157.40	300.49	-191.73	231.81	3250122.13	1475444.23	40°38'06.006"N	104°35'55.641"W	6.73	
7313.00	64.840	132.490	7171.88	330.14	-211.59	253.83	3250144.15	1475424.37	40°38'05.808"N	104°35'55.358"W	5.76	
7345.00	68.690	132.540	7184.50	359.54	-231.46	275.49	3250165.82	1475404.50	40°38'05.609"N	104°35'55.080"W	12.03	
7377.00	71.780	133.330	7195.32	389.65	-251.97	297.54	3250187.86	1475383.99	40°38'05.404"N	104°35'54.797"W	9.93	
7409.00	75.210	132.990	7204.41	420.32	-272.95	319.92	3250210.24	1475363.00	40°38'05.195"N	104°35'54.509"W	10.77	
7441.00	77.800	131.800	7211.88	451.44	-293.93	342.89	3250233.22	1475342.03	40°38'04.985"N	104°35'54.214"W	8.86	
7474.00	81.350	129.920	7217.85	483.88	-315.15	367.44	3250257.76	1475320.80	40°38'04.773"N	104°35'53.898"W	12.13	
7506.00	85.160	129.860	7221.61	515.62	-335.53	391.82	3250282.14	1475300.43	40°38'04.569"N	104°35'53.585"W	11.91	
7538.00	88.390	130.350	7223.41	547.54	-356.11	416.25	3250306.57	1475279.85	40°38'04.363"N	104°35'53.271"W	10.21	



Actual Wellpath Report

OWL CREEK 8-64-30-1A AWP

Page 4 of 6



REFERENCE WELLPATH IDENTIFICATION

Operator	MARATHON OIL COMPANY	Slot	SLOT#01 OWL CREEK 8-64-30-1A (951'FNL & 500'FWL, SEC.30)
Area	COLORADO	Well	OWL CREEK 8-64-30-1A
Field	WELD COUNTY (NAD 83, GRID NORTH)	Wellbore	OWL CREEK 8-64-30-1A AWB
Facility	SEC.30-T8N-R64W		

WELLPATH DATA (146 stations)

MD [ft]	Inclination [°]	Azimuth [°]	TVD [ft]	Vert Sect [ft]	North [ft]	East [ft]	Grid East [US ft]	Grid North [US ft]	Latitude	Longitude	DLS [°/100ft]	Comments
7570.00	89.840	130.540	7223.90	579.52	-376.87	440.60	3250330.92	1475259.09	40°38'04.156"N	104°35'52.958"W	4.57	
7602.00	90.270	130.970	7223.87	611.51	-397.76	464.84	3250355.16	1475238.20	40°38'03.947"N	104°35'52.646"W	1.90	
7633.00	90.760	130.710	7223.59	642.50	-418.03	488.29	3250378.61	1475217.93	40°38'03.744"N	104°35'52.345"W	1.79	
7649.00	90.920	131.300	7223.36	658.49	-428.52	500.36	3250390.68	1475207.44	40°38'03.639"N	104°35'52.189"W	3.82	
7704.00	90.720	132.500	7222.57	713.49	-465.25	541.30	3250431.61	1475170.71	40°38'03.272"N	104°35'51.663"W	2.21	
7767.00	90.800	131.860	7221.73	776.48	-507.55	587.98	3250478.29	1475128.41	40°38'02.850"N	104°35'51.063"W	1.02	
7858.00	88.270	131.020	7222.47	867.46	-567.77	656.19	3250546.50	1475068.19	40°38'02.248"N	104°35'50.187"W	2.93	
7953.00	88.440	131.420	7225.20	962.40	-630.34	727.62	3250617.93	1475005.62	40°38'01.622"N	104°35'49.269"W	0.46	
8049.00	89.130	132.440	7227.24	1058.38	-694.48	799.02	3250689.33	1474941.49	40°38'00.981"N	104°35'48.351"W	1.28	
8145.00	90.240	133.110	7227.76	1154.37	-759.67	869.48	3250759.79	1474876.30	40°38'00.330"N	104°35'47.446"W	1.35	
8242.00	90.580	132.540	7227.07	1251.36	-825.61	940.62	3250830.93	1474810.36	40°37'59.672"N	104°35'46.532"W	0.68	
8338.00	91.500	132.490	7225.33	1347.35	-890.47	1011.37	3250901.68	1474745.50	40°37'59.024"N	104°35'45.623"W	0.96	
8434.00	91.540	131.880	7222.78	1443.31	-954.91	1082.48	3250972.79	1474681.06	40°37'58.380"N	104°35'44.709"W	0.64	
8531.00	92.630	130.890	7219.25	1540.23	-1019.00	1155.21	3251045.51	1474366.98	40°37'57.739"N	104°35'43.774"W	1.52	
8628.00	90.200	128.860	7216.86	1637.11	-1081.16	1229.62	3251119.92	1474554.82	40°37'57.117"N	104°35'42.817"W	3.26	
8723.00	90.670	131.920	7216.13	1732.04	-1142.71	1301.96	3251192.26	1474493.27	40°37'56.502"N	104°35'41.887"W	3.26	
8819.00	91.130	131.310	7214.63	1828.02	-1206.45	1373.73	3251264.03	1474429.52	40°37'55.865"N	104°35'40.965"W	0.80	
8915.00	90.480	131.010	7213.28	1923.99	-1269.63	1446.00	3251336.29	1474366.35	40°37'55.233"N	104°35'40.036"W	0.75	
9011.00	91.100	131.990	7211.95	2019.97	-1333.24	1517.89	3251408.18	1474302.74	40°37'54.598"N	104°35'39.112"W	1.21	
9108.00	92.080	131.480	7209.26	2116.93	-1397.78	1590.24	3251480.54	1474238.20	40°37'53.953"N	104°35'38.182"W	1.14	
9205.00	91.480	133.240	7206.25	2213.88	-1463.10	1661.88	3251552.17	1474172.88	40°37'53.300"N	104°35'37.262"W	1.92	
9301.00	89.110	135.880	7205.76	2309.78	-1530.45	1730.27	3251620.56	1474105.53	40°37'52.628"N	104°35'36.384"W	3.70	
9397.00	90.920	136.810	7205.73	2405.54	-1599.91	1796.54	3251686.83	1474036.08	40°37'51.935"N	104°35'35.534"W	2.12	
9493.00	89.630	135.940	7205.27	2501.29	-1669.39	1862.77	3251753.06	1473966.59	40°37'51.241"N	104°35'34.684"W	1.62	
9588.00	91.070	134.850	7204.69	2596.14	-1737.03	1929.47	3251819.76	1473898.96	40°37'50.566"N	104°35'33.828"W	1.90	
9684.00	87.710	131.070	7205.71	2692.10	-1802.43	1999.70	3251889.99	1473833.57	40°37'49.913"N	104°35'32.926"W	5.27	
9780.00	88.120	132.020	7209.20	2788.03	-1866.05	2071.50	3251961.79	1473769.94	40°37'49.277"N	104°35'32.003"W	1.08	
9876.00	88.820	133.020	7211.77	2883.99	-1930.91	2142.23	3252032.51	1473705.09	40°37'48.629"N	104°35'31.094"W	1.27	
9972.00	89.840	133.470	7212.89	2979.97	-1996.67	2212.16	3252102.44	1473639.32	40°37'47.972"N	104°35'30.196"W	1.16	
10067.00	90.060	131.560	7212.97	3074.96	-2060.87	2282.18	3252172.46	1473575.13	40°37'47.331"N	104°35'29.297"W	2.02	
10163.00	91.140	133.700	7211.97	3170.95	-2125.88	2352.80	3252243.08	1473510.12	40°37'46.681"N	104°35'28.389"W	2.50	
10259.00	92.710	134.840	7208.74	3266.83	-2192.85	2421.50	3252311.77	1473443.15	40°37'46.013"N	104°35'27.507"W	2.02	
10354.00	92.270	132.910	7204.62	3361.70	-2258.63	2489.91	3252380.19	1473377.37	40°37'45.356"N	104°35'26.629"W	2.08	
10450.00	91.010	132.240	7201.87	3457.66	-2323.55	2560.58	3252450.85	1473312.46	40°37'44.707"N	104°35'25.721"W	1.49	
10546.00	91.100	131.540	7200.10	3553.64	-2387.64	2632.03	3252522.30	1473248.37	40°37'44.067"N	104°35'24.803"W	0.74	
10641.00	90.340	130.750	7198.91	3648.61	-2450.14	2703.56	3252593.83	1473185.87	40°37'43.442"N	104°35'23.883"W	1.15	
10736.00	90.150	131.580	7198.50	3743.59	-2512.67	2775.08	3252665.34	1473123.34	40°37'42.817"N	104°35'22.964"W	0.90	
10831.00	89.350	129.580	7198.91	3838.54	-2574.46	2847.22	3252737.49	1473061.55	40°37'42.199"N	104°35'22.037"W	2.27	
10927.00	89.110	129.540	7200.20	3934.43	-2635.60	2921.23	3252811.49	1473000.41	40°37'41.587"N	104°35'21.085"W	0.25	
11023.00	87.990	130.410	7202.63	4030.32	-2697.25	2994.77	3252885.03	1472938.76	40°37'40.971"N	104°35'20.140"W	1.48	
11118.00	87.970	132.800	7205.98	4125.24	-2760.29	3065.76	3252956.02	1472875.73	40°37'40.341"N	104°35'19.228"W	2.51	
11214.00	88.190	132.740	7209.20	4221.19	-2825.44	3136.19	3253026.45	1472810.58	40°37'39.690"N	104°35'18.323"W	0.24	
11309.00	89.350	134.220	7211.24	4316.14	-2890.79	3205.10	3253095.36	1472745.22	40°37'39.037"N	104°35'17.438"W	1.98	
11405.00	90.460	134.190	7211.40	4412.08	-2957.72	3273.92	3253164.18	1472678.29	40°37'38.369"N	104°35'16.554"W	1.16	
11501.00	90.060	134.220	7210.96	4508.03	-3024.66	3342.74	3253232.99	1472611.36	40°37'37.700"N	104°35'15.671"W	0.42	



Actual Wellpath Report

OWL CREEK 8-64-30-1A AWP

Page 5 of 6



REFERENCE WELLPATH IDENTIFICATION			
Operator	MARATHON OIL COMPANY	Slot	SLOT#01 OWL CREEK 8-64-30-1A (951'FNL & 500'FWL, SEC.30)
Area	COLORADO	Well	OWL CREEK 8-64-30-1A
Field	WELD COUNTY (NAD 83, GRID NORTH)	Wellbore	OWL CREEK 8-64-30-1A AWB
Facility	SEC.30-T8N-R64W		

WELLPATH DATA (146 stations)

MD [ft]	Inclination [°]	Azimuth [°]	TVD [ft]	Vert Sect [ft]	North [ft]	East [ft]	Grid East [US ft]	Grid North [US ft]	Latitude	Longitude	DLS [°/100ft]	Comments
11597.00	89.810	133.510	7211.07	4603.99	-3091.18	3411.95	3253302.20	1472544.84	40°37'37.036"N	104°35'14.782"W	0.78	
11693.00	92.080	133.600	7209.49	4699.95	-3157.32	3481.51	3253371.76	1472478.71	40°37'36.375"N	104°35'13.889"W	2.37	
11789.00	91.880	132.950	7206.17	4795.88	-3223.08	3551.36	3253441.61	1472412.94	40°37'35.718"N	104°35'12.992"W	0.71	
11884.00	91.620	132.610	7203.27	4890.83	-3287.58	3621.06	3253511.30	1472348.45	40°37'35.074"N	104°35'12.097"W	0.45	
11980.00	89.780	133.890	7202.10	4986.80	-3353.35	3690.97	3253581.22	1472282.68	40°37'34.417"N	104°35'11.199"W	2.33	
12075.00	90.730	133.300	7201.67	5081.77	-3418.85	3759.77	3253650.02	1472217.18	40°37'33.763"N	104°35'10.315"W	1.18	
12171.00	90.710	133.300	7200.47	5177.75	-3484.68	3829.63	3253719.87	1472151.34	40°37'33.105"N	104°35'09.418"W	0.02	
12267.00	89.750	132.290	7200.08	5273.74	-3549.90	3900.07	3253790.31	1472086.13	40°37'32.454"N	104°35'08.513"W	1.45	
12362.00	88.740	131.670	7201.33	5368.73	-3613.44	3970.69	3253860.93	1472022.59	40°37'31.819"N	104°35'07.606"W	1.25	
12381.00	88.760	132.280	7201.75	5387.73	-3626.14	3984.81	3253875.05	1472009.89	40°37'31.692"N	104°35'07.425"W	3.21	LAST BHI MWD SURVEY
12450.00	88.760	132.280	7203.24	5456.71	-3672.55	4035.85	3253926.09	1471963.48	40°37'31.228"N	104°35'06.769"W	0.00	PROJECTION TO BIT

HOLE & CASING SECTIONS - Ref Wellbore: OWL CREEK 8-64-30-1A AWB Ref Wellpath: OWL CREEK 8-64-30-1A AWP

String/Diameter	Start MD [ft]	End MD [ft]	Interval [ft]	Start TVD [ft]	End TVD [ft]	Start N/S [ft]	Start E/W [ft]	End N/S [ft]	End E/W [ft]
9.625in Casing Surface	31.00	1006.00	975.00	31.00	1006.00	0.00	0.00	0.00	0.00
8.75in Open Hole	1006.00	7707.00	6701.00	1006.00	7222.53	0.00	0.00	-467.28	543.51
7in Casing Intermediate	31.00	7693.00	7662.00	31.00	7222.71	0.00	0.00	-457.84	533.17
6in Open Hole	7707.00	12450.00	4743.00	7222.53	7203.24	-467.28	543.51	-3672.55	4035.85

TARGETS

Name	MD [ft]	TVD [ft]	North [ft]	East [ft]	Grid East [US ft]	Grid North [US ft]	Latitude	Longitude	Shape
OWL CREEK 8-64-30-1A BHL ON PLAT (600'FSL & 600'FEL, REV-1)		7179.00	-3702.27	4071.31	3253961.55	1471933.76	40°37'30.931"N	104°35'06.313"W	point
OWL CREEK 8-64-30-1A HARDLINES (600' SETBACKS)		7179.00	0.00	0.00	3249890.33	1475635.95	40°38'07.924"N	104°35'58.623"W	polygon
OWL CREEK 8-64-30-1A SECTION LINES		7179.00	0.00	0.00	3249890.33	1475635.95	40°38'07.924"N	104°35'58.623"W	polygon

WELLPATH COMPOSITION - Ref Wellbore: OWL CREEK 8-64-30-1A AWB Ref Wellpath: OWL CREEK 8-64-30-1A AWP

Start MD [ft]	End MD [ft]	Positional Uncertainty Model	Log Name/Comment	Wellbore
1006.00	12381.00	NaviTrak (Standard)	BHI MWD SURVEYS <1071-12381>	OWL CREEK 8-64-30-1A AWB
12381.00	12450.00	Blind Drilling (std)	Projection to bit	OWL CREEK 8-64-30-1A AWB

**Actual Wellpath Report****OWL CREEK 8-64-30-1A AWP**

Page 6 of 6

**REFERENCE WELLPATH IDENTIFICATION**

Operator	MARATHON OIL COMPANY	Slot	SLOT#01 OWL CREEK 8-64-30-1A (951'FNL & 500'FWL, SEC.30)
Area	COLORADO	Well	OWL CREEK 8-64-30-1A
Field	WELD COUNTY (NAD 83, GRID NORTH)	Wellbore	OWL CREEK 8-64-30-1A AWB
Facility	SEC.30-T8N-R64W		

WELLPATH COMMENTS

MD [ft]	Inclination [°]	Azimuth [°]	TVD [ft]	Comment
1006.00	0.000	246.900	1006.00	TIED INTO SURFACE CASING SHOE
12381.00	88.760	132.280	7201.75	LAST BHI MWD SURVEY
12450.00	88.760	132.280	7203.24	PROJECTION TO BIT