
WILLIAMS PRODUCTION RMT INC - EBUS

**PA 533-20
Parachute
Garfield County , Colorado**

Cement Surface Casing
16-Sep-2011

Job Site Documents

The Road to Excellence Starts with Safety

Sold To #: 300721	Ship To #: 2867307	Quote #:	Sales Order #: 8335101
Customer: WILLIAMS PRODUCTION RMT INC - EBUS	Customer Rep: HARRISON, JEREMY		
Well Name: PA	Well #: 533-20	API/UWI #: 05-045-20242	
Field: Parachute	City (SAP): PARACHUTE	County/Parish: Garfield	State: Colorado
Lat: N 39.504 deg. OR N 39 deg. 30 min. 14.49 secs.	Long: W 108.019 deg. OR W -109 deg. 58 min. 51.308 secs.		
Contractor: NABORS	Rig/Platform Name/Num: NABORS 577		
Job Purpose: Cement Surface Casing			
Well Type: Development Well	Job Type: Cement Surface Casing		
Sales Person: SCOTT, KYLE	Srvc Supervisor: PONDER, THOMAS	MBU ID Emp #: 427112	

Job Personnel

HES Emp Name	Exp Hrs	Emp #	HES Emp Name	Exp Hrs	Emp #	HES Emp Name	Exp Hrs	Emp #
BORSZICH, STEPHEN A	8	412388	PONDER, THOMAS Lynn	8	427112	ROSE, BENJAMIN Keith	8	487022
SINCLAIR, DAN J	8	338784						

Equipment

HES Unit #	Distance-1 way	HES Unit #	Distance-1 way	HES Unit #	Distance-1 way	HES Unit #	Distance-1 way
10722398	60 mile	10744648C	60 mile	10998508	60 mile	11139330	60 mile
11259886	60 mile						

Job Hours

Date	On Location Hours	Operating Hours	Date	On Location Hours	Operating Hours	Date	On Location Hours	Operating Hours
09/15/2011	1	0	09/16/2011	7	3			

TOTAL Total is the sum of each column separately

Job

Formation Name	Formation Depth (MD)	Top	Bottom	Form Type	Job depth MD	Water Depth	Perforation Depth (MD)	From	To
				BHST	993. ft				
					Job Depth TVD	5. ft			
					Wk Ht Above Floor				

Job Times

Date	Time	Time Zone
15 - Sep - 2011	18:00	MST
15 - Sep - 2011	23:00	MST
16 - Sep - 2011	05:10	MST
16 - Sep - 2011	06:02	MST
16 - Sep - 2011	07:00	MST

Well Data

Description	New / Used	Max pressure psig	Size in	ID in	Weight lbm/ft	Thread	Grade	Top MD ft	Bottom MD ft	Top TVD ft	Bottom TVD ft
OPE HOLE				13.5				.	1007.		
SURFACE CASING	Unknown		9.625	9.001	32.3		H-40	.	993.		

Sales/Rental/3rd Party (HES)

Description	Qty	Qty uom	Depth	Supplier
PLUG,CMTG,TOP,9 5/8,HWE,8.16 MIN/9.06 MA	1	EA		
R/A DENSOMETER W/CHART RECORDER,/JOB,ZI	1	JOB		
ADC (AUTO DENSITY CTRL) SYS, /JOB,ZI	1	JOB		
PORT. DAS W/CEMWIN;ACQUIRE W/HES, ZI	1	JOB		

Tools and Accessories

Type	Size	Qty	Make	Depth	Type	Size	Qty	Make	Depth	Type	Size	Qty	Make
Guide Shoe					Packer					Top Plug	9 5/8	1	HES
Float Shoe					Bridge Plug					Bottom Plug			
Float Collar					Retainer					SSR plug set			
Insert Float										Plug Container	9 5/8	1	HES
Stage Tool										Centralizers			

Miscellaneous Materials

Gelling Agt	Conc	Surfactant	Conc	Acid Type	Qty	Conc	%
Treatment Fld	Conc	Inhibitor	Conc	Sand Type	Size	Qty	

Fluid Data										
Stage/Plug #: 1										
Fluid #	Stage Type	Fluid Name	Qty	Qty uom	Mixing Density lbm/gal	Yield ft ³ /sk	Mix Fluid Gal/sk	Rate bbl/min	Total Mix Fluid Gal/sk	
1	Fresh Water Spacer		20	bbl	8.33	.0	.0	6.0		
2	Tail Cement	VERSACEM (TM) SYSTEM (452010)	310	sacks	12.8	2.11	11.75	8.0	11.75	
11.75 Gal		FRESH WATER								
3	Displacement Fluid		74.9	bbl	8.34	.0	.0	10.0		
Calculated Values		Pressures		Volumes						
Displacement	74.9	Shut In: Instant		Lost Returns		Cement Slurry	116.5	Pad		
Top Of Cement	SURFACE	5 Min		Cement Returns	26	Actual Displacement	74.9	Treatment		
Frac Gradient		15 Min		Spacers	20	Load and Breakdown		Total Job	211	
Rates										
Circulating	RIG	Mixing	8	Displacement	10	Avg. Job	8			
Cement Left In Pipe	Amount	40.8 ft	Reason	Shoe Joint						
Frac Ring # 1 @	ID	Frac ring # 2 @	ID	Frac Ring # 3 @	ID	Frac Ring # 4 @	ID			
The Information Stated Herein Is Correct				Customer Representative Signature						

The Road to Excellence Starts with Safety

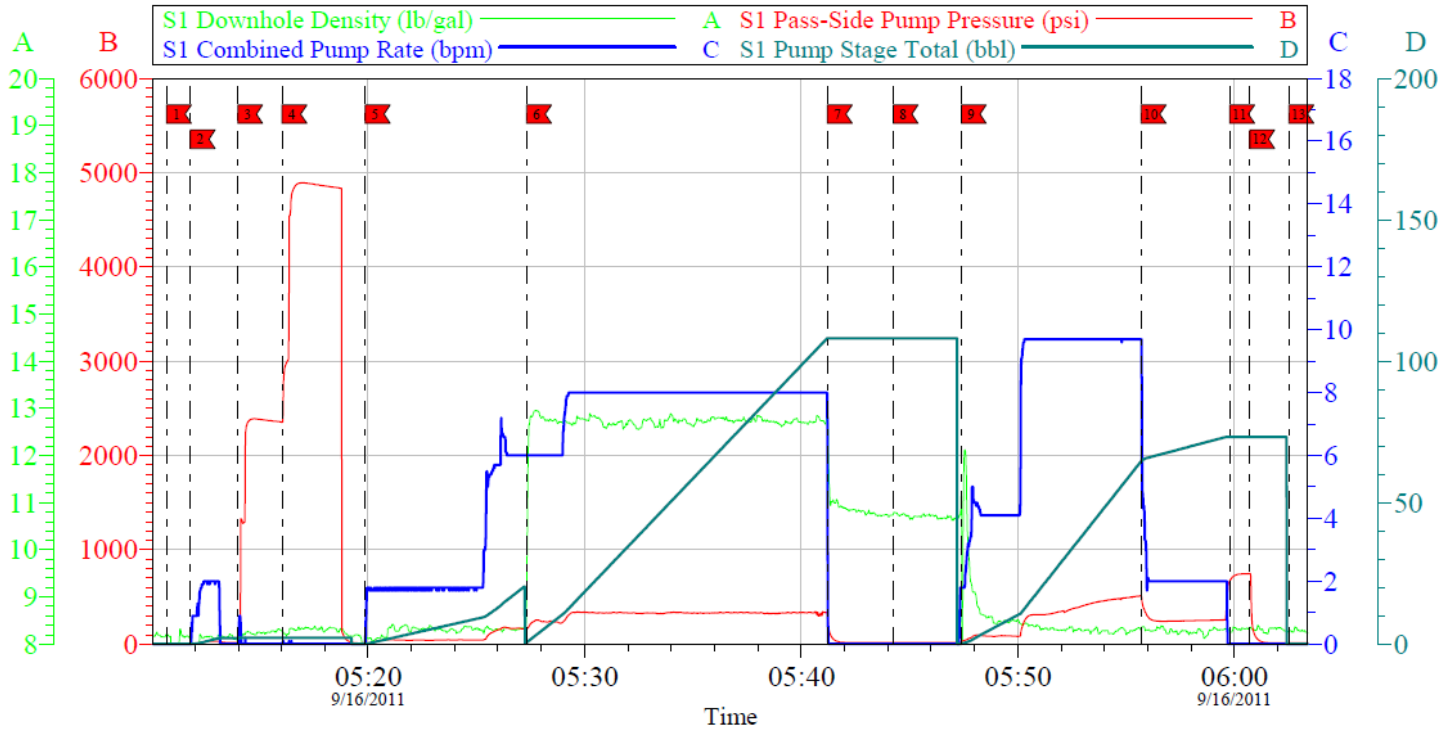
Sold To #: 300721	Ship To #: 2867307	Quote #:	Sales Order #: 8335101
Customer: WILLIAMS PRODUCTION RMT INC - EBUS		Customer Rep: HARRISON, JEREMY	
Well Name: PA	Well #: 533-20	API/UWI #: 05-045-20242	
Field: Parachute	City (SAP): PARACHUTE	County/Parish: Garfield	State: Colorado
Legal Description:			
Lat: N 39.504 deg. OR N 39 deg. 30 min. 14.49 secs.		Long: W 108.019 deg. OR W -109 deg. 58 min. 51.308 secs.	
Contractor: NABORS		Rig/Platform Name/Num: NABORS 577	
Job Purpose: Cement Surface Casing			Ticket Amount:
Well Type: Development Well		Job Type: Cement Surface Casing	
Sales Person: SCOTT, KYLE		Srv Supervisor: PONDER, THOMAS	MBU ID Emp #: 427112

Activity Description	Date/Time	Cht #	Rate bbl/min	Volume bbl		Pressure psig		Comments
				Stage	Total	Tubing	Casing	
Call Out	09/15/2011 18:00							
Crew Leave Yard	09/15/2011 21:30							ALL HES PRESENT FOR PRE-CONVOY SAFETY HUDDLE
Arrive At Loc	09/15/2011 23:00							RIG WAS RUNNING A WIPER TRIP WHEN CREW ARRIVED ON LOCATION, ARRIVED EARLY WERE ASKED TO BE ON LOCATION @ 0130 ON 9-16-11
Assessment Of Location Safety Meeting	09/16/2011 04:00							TD- 1007', TP- 993', SJ- 40.83', MUD- 9.4 PPG, HOLE- 13 1/2", SURFACE CASING- 9 5/8" 32.3# H-40
Rig-Up Equipment	09/16/2011 04:15							RIG STARTED CIRCULATION ON BOTTOM @ 0400, 1- 550 PICK UP, 1-ELITE PUMP TRUCK, 1-660 CUFT BULK TRUCK
Safety Meeting	09/16/2011 05:00							ALL HES PRESENT, RIG CREW PRESENT
Start Job	09/16/2011 05:10							
Other	09/16/2011 05:11		2	2			31.0	FILL LINES
Test Lines	09/16/2011 05:13		0.1	0.1			4892.0	PRESSURE TEST OK
Pump Spacer 1	09/16/2011 05:19		6	20			179.0	FRESH WATER
Pump Tail Cement	09/16/2011 05:27		8	116.5			342.0	310 SKS 12.8 PPG 2.11 FT3/SK 11.75 GAL/SK

Activity Description	Date/Time	Cht #	Rate bbl/ min	Volume bbl		Pressure psig		Comments
				Stage	Total	Tubing	Casing	
Shutdown	09/16/2011 05:41							
Drop Plug	09/16/2011 05:44							PLUG DROP VERIFIED VIA TATTLE TELL BY CUSTOMER REP
Pump Displacement	09/16/2011 05:47		10	74.9			515.0	FRESH WATER, WASHED UP ON TOP OF THE PLUG WITH 2 SK OF SODIUM BICARBONATE TO DULL PH LVL
Slow Rate	09/16/2011 05:55		2	64.9			242.0	GOOD CIRCULATION THROUGH OUT THE JOB, CIRCULATED 26 BBL OF CEMENT TO SURFACE
Bump Plug	09/16/2011 05:59		2	74.9			259.0	PLUG BUMPED
Check Floats	09/16/2011 06:00						748.0	FLOATS HELD, .5 BBL BACK TO THE DISPLACEMENT TANKS
End Job	09/16/2011 06:02							THANK YOU FOR CHOOSING HALLIBURTON, THOMAS PONDER AND CREW

WILLIAMS

PA 533-20, 9.625 IN SURFACE



Local Event Log			
Maximum	SPPP	Maximum	SPPP
1 START JOB	05:10:41 4.000	2 FILL LINES	05:11:47 31.00
4 HIGH TEST LINES	05:16:01 4892	5 PUMP H2O SPACER	05:19:52 179.0
7 SHUTDOWN	05:41:12 335.0	8 DROP PLUG	05:44:15 25.08
10 SLOW RATE	05:55:42 669.2	11 BUMP PLUG	05:59:47 748.0
13 END JOB	06:02:31 12.00	12 CHECK FLOATS	06:00:43 748.0
		3 LOW TEST LINES	05:13:59 2389
		6 PUMP TAIL CEMENT	05:27:19 345.0
		9 PUMP H2O DISPLACEMENT	05:47:24 515.0

Customer: WILLIAMS	Job Date: 16-Sep-2011	Sales Order #: 8335101
Well Description: PA 533-20	Job Type: SURFACE	ADC Used: YES
Company Rep: JEREMY HARRISON	Cement Supervisor: THOMAS PONDER	Elite #/Operator: ELITE #6 / STEPHEN BORSZICH

OptiCem v6.4.9
16-Sep-11 06:07