
CHEVRON - MID-CONTINENT EBIZ

SKR 598-36-BV-21
PICEANCE
Garfield County , Colorado

Cement Surface Casing

01-Jan-2009

Job Site Documents

The Road to Excellence Starts with Safety

Sold To #: 338668	Ship To #: 2695502	Quote #:	Sales Order #: 6416751
Customer: CHEVRON - MID-CONTINENT EBIZ		Customer Rep:	
Well Name: SKR		Well #: 598-36-BV-21	API/UWI #:
Field: PICEANCE	City (SAP): PARACHUTE	County/Parish: Garfield	State: Colorado
Contractor: H&P 316		Rig/Platform Name/Num: H&P 316	
Job Purpose: Cement Surface Casing			
Well Type: Development Well		Job Type: Cement Surface Casing	
Sales Person: KOHL, KYLE		Srvc Supervisor: DANIEL, EVERETT	MBU ID Emp #: 337325

Job Personnel

HES Emp Name	Exp Hrs	Emp #	HES Emp Name	Exp Hrs	Emp #	HES Emp Name	Exp Hrs	Emp #
DANIEL, EVERETT Dean	7.5	337325	MADRIGAL, MARK Henry	7.5	444368	MALONE, FLOYD Wayne	7.5	393379
SMITH, DUSTIN Michael	7.5	418015						

Equipment

HES Unit #	Distance-1 way	HES Unit #	Distance-1 way	HES Unit #	Distance-1 way	HES Unit #	Distance-1 way
10214529C	120 mile	10867423	120 mile	10897887	120 mile	10951246	120 mile
10969711	120 mile						

Job Hours

Date	On Location Hours	Operating Hours	Date	On Location Hours	Operating Hours	Date	On Location Hours	Operating Hours
12/31/2008	5.5	2	1/1/2009	2	1			
TOTAL	7.5	1	Total is the sum of each column separately					

Job

Formation Name	Formation Depth (MD)	Top	Bottom	Form Type	Job depth MD	Job Depth TVD	Water Depth	Perforation Depth (MD)	From	To
				BHST	1320. ft	1320. ft	Wk Ht Above Floor			

Job Times

	Date	Time	Time Zone
Called Out	31 - Dec - 2008	14:30	MST
On Location	31 - Dec - 2008	18:30	MST
Job Started	31 - Dec - 2008	23:13	MST
Job Completed	01 - Jan - 2009	00:11	MST
Departed Loc	01 - Jan - 2009	02:00	MST

Well Data

Description	New / Used	Max pressure psig	Size in	ID in	Weight lbm/ft	Thread	Grade	Top MD ft	Bottom MD ft	Top TVD ft	Bottom TVD ft
OPEN HOLE				12.25					1320.		1320.
SURFACE CASING	New		8.625	8.097	24.		J-55		1320.		1320.

Sales/Rental/3rd Party (HES)

Description	Qty	Qty uom	Depth	Supplier
PLUG,CMTG,TOP,8 5/8,HWE,7.20 MIN/8.09 MA	1	EA		

Tools and Accessories

Type	Size	Qty	Make	Depth	Type	Size	Qty	Make	Depth	Type	Size	Qty	Make
Guide Shoe					Packer					Top Plug			
Float Shoe					Bridge Plug					Bottom Plug			
Float Collar					Retainer					SSR plug set			
Insert Float										Plug Container			
Stage Tool										Centralizers			

Miscellaneous Materials

Gelling Agt	Conc	Surfactant	Conc	Acid Type	Qty	Conc	%
Treatment Fld	Conc	Inhibitor	Conc	Sand Type	Size		Qty

HALLIBURTON**Cementing Job Summary**

Fluid Data									
Stage/Plug #: 1									
Fluid #	Stage Type	Fluid Name	Qty	Qty uom	Mixing Density lbm/gal	Yield ft ³ /sk	Mix Fluid Gal/sk	Rate bbl/min	Total Mix Fluid Gal/sk
1	DYE SPACER WITH POLYFLAKE		30	bbl	8.33	.0	.0	.0	
2	Lead Cement	VERSACEM (TM) SYSTEM (452010)	150	sacks	12.3	2.38	13.75		13.75
3	Tail Cement	VERSACEM (TM) SYSTEM (452010)	150	sacks	12.8	2.11	11.75		11.75
4	H2O DISPLACEMENT	Dyed with Poly Flake	64.8	bbl	8.33	.0	.0	.0	
Calculated Values		Pressures		Volumes					
Displacement	64.8	Shut In: Instant		Lost Returns		Cement Slurry	120	Pad	
Top Of Cement	Surface	5 Min		Cement Returns	20	Actual Displacement	64.8	Treatment	
Frac Gradient		15 Min		Spacers	30	Load and Breakdown		Total Job	
Rates									
Circulating	6	Mixing	7	Displacement	8	Avg. Job	7		
Cement Left In Pipe	Amount	44 ft	Reason	Shoe Joint					
Frac Ring # 1 @	ID	Frac ring # 2 @	ID	Frac Ring # 3 @	ID	Frac Ring # 4 @	ID		
The Information Stated Herein Is Correct				Customer Representative Signature					

The Road to Excellence Starts with Safety

Sold To #: 338668	Ship To #: 2695502	Quote #:	Sales Order #: 6416751
Customer: CHEVRON - MID-CONTINENT EBIZ	Customer Rep:		
Well Name: SKR	Well #: 598-36-BV-21	API/UWI #:	
Field: PICEANCE	City (SAP): PARACHUTE	County/Parish: Garfield	State: Colorado
Legal Description:			
Lat:	Long:		
Contractor: H&P 316	Rig/Platform Name/Num: H&P 316		
Job Purpose: Cement Surface Casing	Ticket Amount:		
Well Type: Development Well	Job Type: Cement Surface Casing		
Sales Person: KOHL, KYLE	Srv Supervisor: DANIEL, EVERETT	MBU ID Emp #:	337325

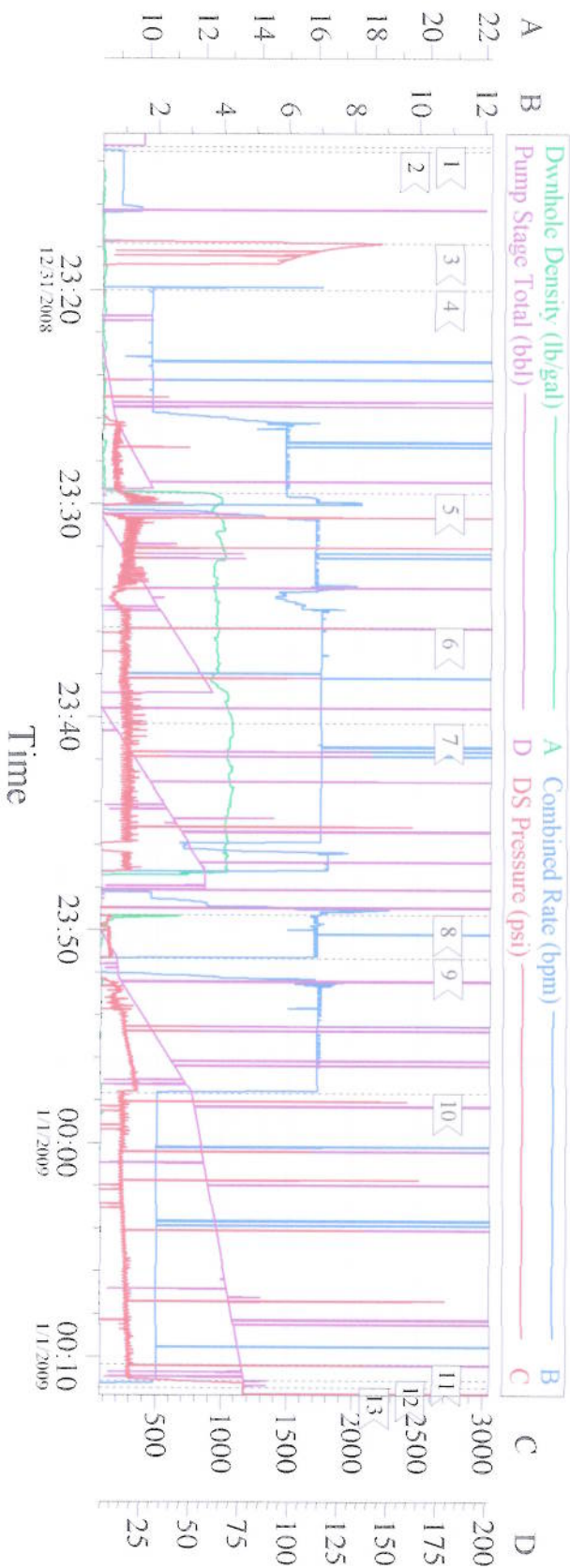
Activity Description	Date/Time	Cht #	Rate bbl/ min	Volume bbl		Pressure psig		Comments
				Stage	Total	Tubing	Casing	
Call Out	12/31/2008 14:30							
Depart Yard Safety Meeting	12/31/2008 16:15							Discussed driving conditions, possible hazards of travel, convoy order and communication.
Depart from Service Center or Other Site	12/31/2008 16:45							
Arrive at Location from Service Center	12/31/2008 18:30							Arrived 1 hr. early
Comment	12/31/2008 18:30							Consult with Co. Rep. verified numbers and materials and equipment on location including cement totals and water requirements.
Assessment Of Location Safety Meeting	12/31/2008 18:30							
Pre-Rig Up Safety Meeting	12/31/2008 18:35							
Rig-Up Equipment	12/31/2008 18:35							Elite 12, 660, Iron to rig, Iron to pit, Two water lines.
Safety Meeting - Pre Job	12/31/2008 23:00							Discussed job procedures and safety issues. Co. Rep. verified plug loaded in plug container.
Start Job	12/31/2008 23:13							
Prime Pumps	12/31/2008 23:13		1.5	2			60.0	
Test Lines	12/31/2008 23:17		0.5	0.1			2200.0	Fresh Water

Activity Description	Date/Time	Cht #	Rate bbl/min	Volume bbl		Pressure psig		Comments
				Stage	Total	Tubing	Casing	
Pump Spacer 1	12/31/2008 23:20		7	30			220.0	Dyed, poly flake in first 10 bbl of spacer
Pump Lead Cement	12/31/2008 23:29		7	63.6			266.0	150 sks of VERSACEM @ 12.3# -2.38yield - 13.75 H2O requirement
Pump Tail Cement	12/31/2008 23:35		7	56.4			280.0	150 sks of VERSACEM @ 12.8# -2.11 yield - 11.75 H2O requirement
Shutdown	12/31/2008 23:40							
Drop Top Plug	12/31/2008 23:40							
Pump Displacement	12/31/2008 23:49		8	64.8			325.0	Displaced with fresh water
Slow Rate	12/31/2008 23:57		2	44			250.0	
Bump Plug	01/01/2009 00:10		2	64.8			1200.0	Bumped the plug @ calculated displacement and 1000 psi over
Check Floats	01/01/2009 00:11							
End Job	01/01/2009 00:11							Did not chart well on computer
Safety Meeting - Pre Rig-Down	01/01/2009 00:15							
Rig-Down Equipment	01/01/2009 01:00							
Rig-Down Completed	01/01/2009 01:45							
Safety Meeting - Departing Location	01/01/2009 01:50							Discussed driving conditions, possible hazards of travel, convoy order and communication.
Depart Location for Service Center or Other Site	01/01/2009 02:00							

Total Depth = 1072 , Total Casing = 1062 , Shoe Joint =44 , Mud Weight =9.2# . Casing remained stationary throughout job and was chained down. 20 bbls of cement returned to surface. 186 bbls of H2O were used for the job and 30 bbls were used for clean up (after the job) The plug landed at calculated displacement and the floats held. Maintained good returns throughout. Job did not chart well on computer.

Thank you for using Grand Junction Halliburton Dean Daniel & Crew

8 5/8 SURFACE H&P 316



1 Start Job	12/31/2008 23:13:20	2 Prime Lines	12/31/2008 23:13:33
3 Test Lines	12/31/2008 23:17:49	4 Pump Spacer 1	12/31/2008 23:20:00
5 Pump Lead Cement	12/31/2008 23:29:30	6 Pump Tail Cement	12/31/2008 23:35:48
7 Shut Down/Drop Top Plug	2/31/2008 23:40:17	8 Pump Displacement	12/31/2008 23:49:19
9 Shut Down/Fix Leak	12/31/2008 23:51:20	10 Slow Rate	12/31/2008 23:57:42
11 Bump Plug	1/1/2009 00:10:21	12 Check Floats	1/1/2009 00:11:06
13 End Job	1/1/2009 00:11:27		

Customer: Chevron
Well Number: SKR 598-36-RV-21
Supervisor: Dean Daniel

Job Date: 12/31/2008
Co. Rep: Ed Doherty
HES Unit: Elite 12

Tricket #: 6416751
ADC Used: YES
Operator: Mark Madrigal

CemWin v1.7.2
01-Jan-09 00:31