
CHEVRON - MID-CONTINENT EBIZ

**SKR 598-36-BV-19
PICEANCE
Garfield County , Colorado**

Cement Production Casing **17-Feb-2009**

Job Site Documents

The Road to Excellence Starts with Safety

Sold To #: 338668	Ship To #: 2695500	Quote #:	Sales Order #: 6503433
Customer: CHEVRON - MID-CONTINENT EBIZ	Customer Rep: DOHERTY, ED		
Well Name: SKR	Well #: 598-36-BV-19	API/UWI #:	
Field: PICEANCE	City (SAP): PARACHUTE	County/Parish: Garfield	State: Colorado
Contractor: H&P 316	Rig/Platform Name/Num: H&P 316		
Job Purpose: Cement Production Casing			
Well Type: Development Well	Job Type: Cement Production Casing		
Sales Person: HARTLEY, RICHARD	Srvc Supervisor: ROCKERT, CHRISTOPHER	MBU ID Emp #: 332914	

Job Personnel

HES Emp Name	Exp Hrs	Emp #	HES Emp Name	Exp Hrs	Emp #	HES Emp Name	Exp Hrs	Emp #
BRUN, JUSTIN M	5	459269	HOEFER, FREEMAN Dennis	5	369666	MAYO, MARK Eaton	5	314204
ROCKERT, CHRISTOPHER Michael	5	332914	SAUTER, MARK A	5	410526	SMITH, DUSTIN Michael	5	418015

Equipment

HES Unit #	Distance-1 way	HES Unit #	Distance-1 way	HES Unit #	Distance-1 way	HES Unit #	Distance-1 way
10784064	120 mile	10822535	120 mile	10871245	120 mile	10951245	120 mile
11006314	120 mile						

Job Hours

Date	On Location Hours	Operating Hours	Date	On Location Hours	Operating Hours	Date	On Location Hours	Operating Hours
2/17/09	5	1.5						
TOTAL			Total is the sum of each column separately					

Job

Formation Name	Formation Depth (MD)	Top	Bottom	Form Type	Job depth MD	Job Depth TVD	Wk Ht Above Floor	Perforation Depth (MD)	From	To	Deparated Loc
				BHST	6042. ft	6042. ft	5. ft				

Job Times

Date	Time	Time Zone
17 - Feb - 2009	04:30	MST
17 - Feb - 2009	09:00	MST
17 - Feb - 2009	13:30	MST
17 - Feb - 2009	14:53	MST
17 - Feb - 2009	17:10	MST

Well Data

Description	New / Used	Max pressure psig	Size in	ID in	Weight lbm/ft	Thread	Grade	Top MD ft	Bottom MD ft	Top TVD ft	Bottom TVD ft
-------------	------------	-------------------	---------	-------	---------------	--------	-------	-----------	--------------	------------	---------------

Sales/Rental/3rd Party (HES)

Description	Qty	Qty uom	Depth	Supplier
PLUG,CMTG, TOP, 4 1/2, HWE, 3.65 MIN/4.14 MA	1	EA		
PORT. DAS W/CEMWIN; ACQUIRE W/HES, ZI	1	JOB		
ADC (AUTO DENSITY CTRL) SYS, /JOB, ZI	1	JOB		

Tools and Accessories

Type	Size	Qty	Make	Depth	Type	Size	Qty	Make	Depth	Type	Size	Qty	Make
Guide Shoe					Packer					Top Plug	4.5	1	
Float Shoe					Bridge Plug					Bottom Plug			
Float Collar					Retainer					SSR plug set			
Insert Float										Plug Container	4.5	1	
Stage Tool										Centralizers			

Miscellaneous Materials

Gelling Agt	Conc	Surfactant	Conc	Acid Type	Qty	Conc	%
Treatment Fld	Conc	Inhibitor	Conc	Sand Type	Size	Qty	

Fluid Data									
Stage/Plug #: 1									
Fluid #	Stage Type	Fluid Name	Qty	Qty uom	Mixing Density lbm/gal	Yield ft ³ /sk	Mix Fluid Gal/sk	Rate bbl/min	Total Mix Fluid Gal/sk
1	Dyed PolyFlake Spacer		50	bbl	8.33	.0	.0	.0	
2	Lead Cement	VARICEM (TM) CEMENT (452009)	310	sacks	12.8	1.6	7.31		
3	Tail Cement	VARICEM (TM) CEMENT (452009)	630	sacks	13.2	1.47	6.32		
4	KCL Displacement		92.9	bbl	.	.0	.0	.0	
Calculated Values		Pressures		Volumes					
Displacement	92.9	Shut In: Instant		Lost Returns	NO	Cement Slurry	253.2	Pad	
Top Of Cement	?????	5 Min		Cement Returns	NO	Actual Displacement	92.9	Treatment	
Frac Gradient		15 Min		Spacers	50	Load and Breakdown		Total Job	397
Rates									
Circulating	RIG	Mixing	8	Displacement	8	Avg. Job	8		
Cement Left In Pipe	Amount	48 ft	Reason	Shoe Joint					
Frac Ring # 1 @	ID	Frac ring # 2 @	ID	Frac Ring # 3 @	ID	Frac Ring # 4 @	ID		
The Information Stated Herein Is Correct				Customer Representative Signature					

The Road to Excellence Starts with Safety

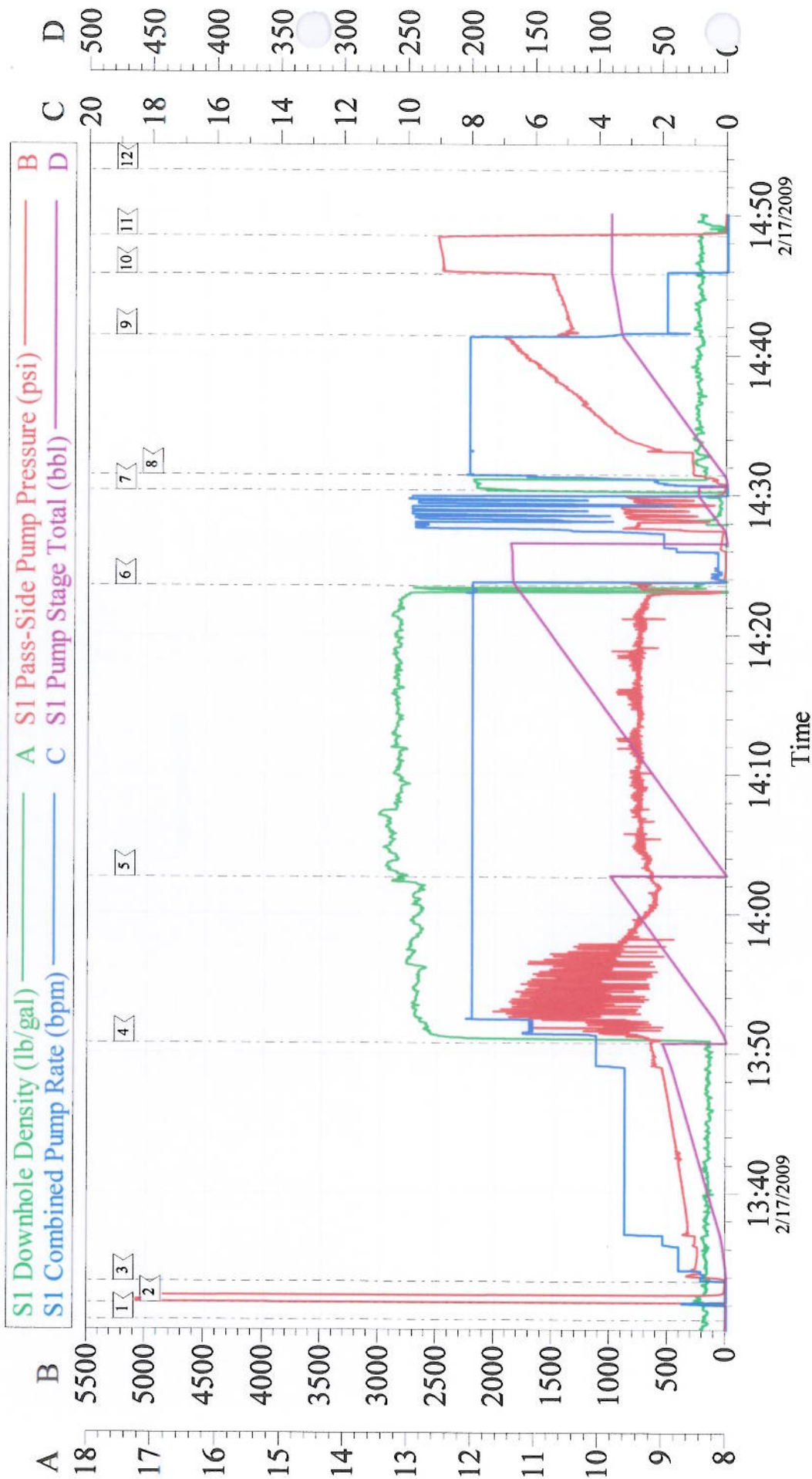
Sold To #: 338668	Ship To #: 2695500	Quote #:	Sales Order #: 6503433
Customer: CHEVRON - MID-CONTINENT EBIZ	Customer Rep: DOHERTY, ED		
Well Name: SKR	Well #: 598-36-BV-19	API/UWI #:	
Field: PICEANCE	City (SAP): PARACHUTE	County/Parish: Garfield	State: Colorado
Legal Description:			
Lat: N 0 deg. OR N 0 deg. 0 min. 0 secs.		Long: E 0 deg. OR E 0 deg. 0 min. 0 secs.	
Contractor: H&P 316	Rig/Platform Name/Num: H&P 316		
Job Purpose: Cement Production Casing	Ticket Amount:		
Well Type: Development Well	Job Type: Cement Production Casing		
Sales Person: HARTLEY, RICHARD	Svc Supervisor: ROCKERT, CHRISTOPHER	MBU ID Emp #: 332914	

Activity Description	Date/Time	Cht #	Rate bbl/min	Volume bbl		Pressure psig		Comments
				Stage	Total	Tubing	Casing	
Call Out	02/17/2009 04:30							TD-6066/ TP-6042/ SHOE-48/ MUD-10.1/ HOLE- 7 7/8/ SURF.CSG-1012 8 5/8 24#
Arrive At Loc	02/17/2009 09:00							ELITE #8
Rig-Up Equipment	02/17/2009 09:15							
Pre-Job Safety Meeting	02/17/2009 13:00							HEAD WAS SECURED DOWN ENTIRE JOB
Start Job	02/17/2009 13:30							COMPANY MAN CONFIRMED PLUG WAS LOADED
Other	02/17/2009 13:31		2	3			85.0	PRIME LINES
Test Lines	02/17/2009 13:32		1				5171.0	NO LEAKS
Pump Spacer 1	02/17/2009 13:33		8	50			610.0	FRESH WATER WITH 10# POLYFLAKE. CIRCULATION ESTABLISHED.
Pump Lead Cement	02/17/2009 13:50		8	88.3			1200.0	310 SKS/ 1.6 YIELD/ 7.31 GAL.SK
Pump Tail Cement	02/17/2009 14:02		8	164.9			630.0	630 SKS/ 1.47 YIELD/ 6.32 GAL.SK
Clean Lines	02/17/2009 14:23							LINES CLEAN
Drop Top Plug	02/17/2009 14:30							PLUG AWAY
Pump Displacement	02/17/2009 14:31		8				285.0	H2O/KCL
Slow Rate	02/17/2009 14:41		2	82			1390.0	15 BBLS SPACER TO SURFACE

Cementing Job Log

Activity Description	Date/Time	Cht #	Rate bbl/min	Volume bbl		Pressure psig		Comments
				Stage	Total	Tubing	Casing	
Bump Plug	02/17/2009 14:45		2	92.9			1490.0	PRESSURED UP TO 2450 PSI ON FLOATS
Check Floats	02/17/2009 14:48							FLOATS HELD 1 BBL BACK
End Job	02/17/2009 14:53							GOOD CIRCULATION THROUGHOUT JOB
Rig-Down Equipment	02/17/2009 15:10							CAUGHT CEMENT 17 BBLS INTO CEMENT
Depart Location for Service Center or Other Site	02/17/2009 17:10							THANK YOU FOR USING HALLIBURTON, CHRIS ROCKERT AND CREW

CHEVRON PRODUCTION CEMENT



Customer: CHEVRON - MID-CONTINENT
Well Description: Skinner Ridge 598-36-BV-19
Company Rep: ED DOHERTY

Job Date: 17-Feb-2009
Job Type: 4 1/2 LONGSTRING
Cement Supervisor: CHRIS ROCKERT

Sales Order #: 6503433
ADC Used: YES
Elite #: 8