

Project: Wattenberg Field
Site: AE (Sec. 18-T6N-R62W) Weld County, CO
Well: Wells Ranch AE18-65-1HN
Wellbore: Original Drilling
Design: APD - Rev 0

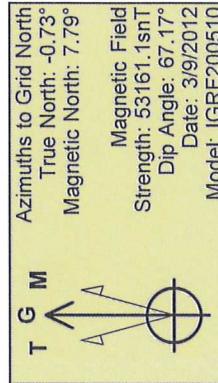
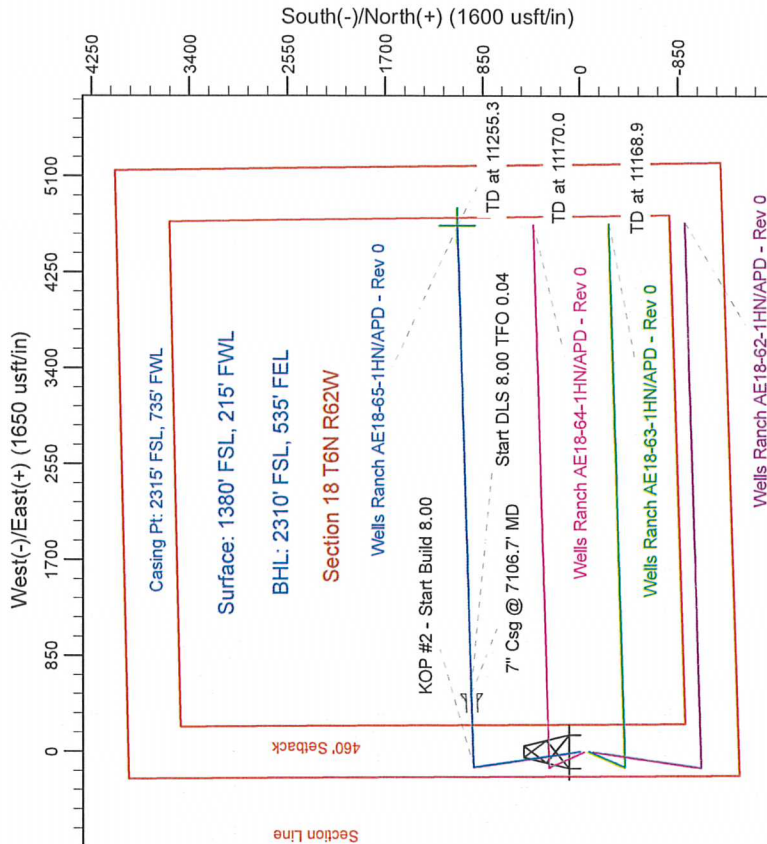
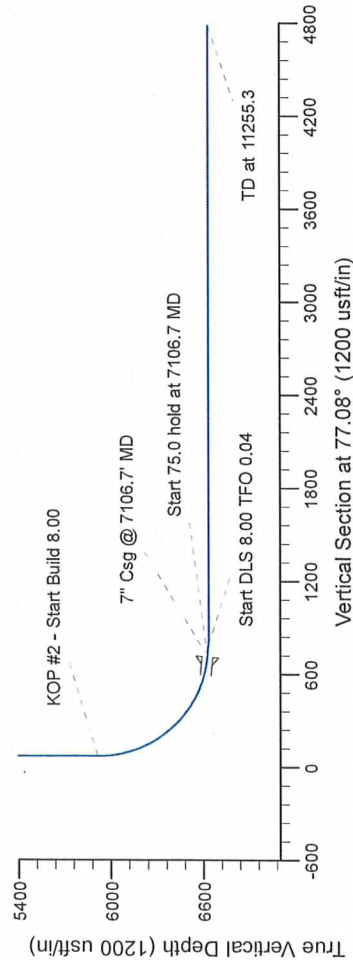
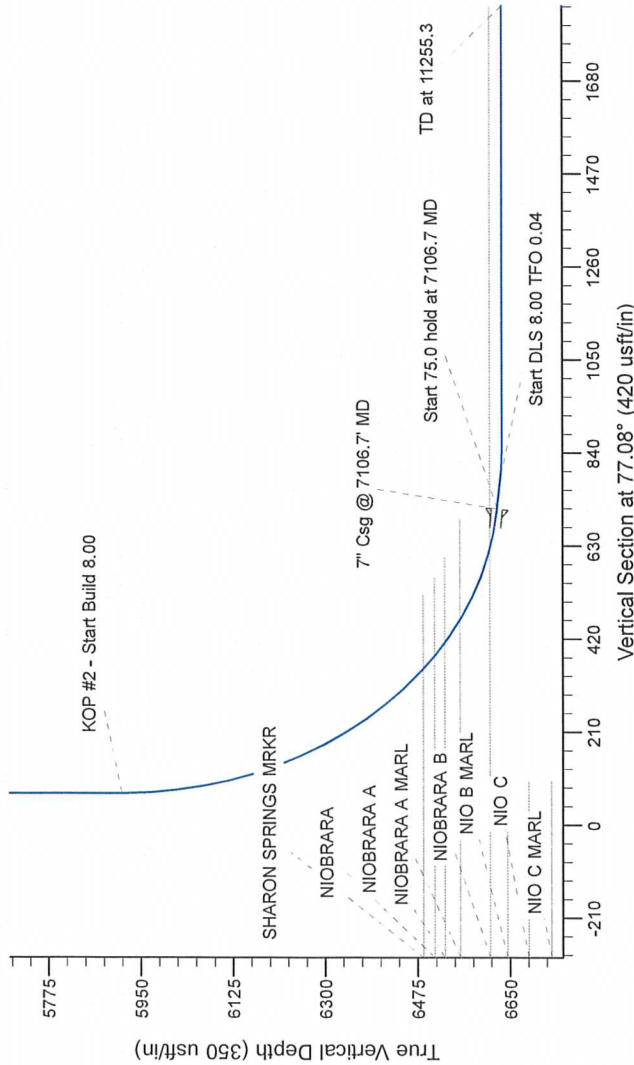
Northern Region Drilling

Geodetic System: US State Plane 1983
Datum: North American Datum 1983
Ellipsoid: GRS 1980
Zone: Colorado Northern Zone
System Datum: Mean Sea Level

SECTION DETAILS

Sec	MD	Inc	Azi	TVD	+N/-S	+E/-W	Dleg	TFace	VSecl	Target
1	0.0	0.00	0.00	0.0	0.0	0.0	0.00	0.00	0.0	0.0
2	1500.0	0.00	0.00	1500.0	0.0	0.0	0.00	0.00	0.0	0.0
3	2183.0	17.07	351.44	2172.9	99.9	-15.0	2.50	351.44	7.7	7.7
4	4698.0	17.07	351.44	4577.1	830.1	-125.0	0.00	0.00	63.8	63.8
5	5381.0	0.00	0.00	5250.0	930.0	-140.0	0.00	0.00	71.4	71.4
6	6044.2	0.00	0.00	5913.2	930.0	-140.0	0.00	0.00	71.4	71.4
7	7106.7	85.00	88.34	6626.7	948.9	513.5	8.00	88.34	712.6	712.6
8	7181.7	85.00	88.34	6633.2	951.1	588.2	0.00	0.00	785.9	785.9
9	7244.2	90.00	88.34	6636.0	952.9	850.6	8.00	0.04	847.1	847.1
10	11255.3	90.00	88.34	6636.0	1068.8	4860.0	0.00	0.00	4781.0	4781.0

Wells Ranch AE18-65-1HN BHL 2310'FSL, 535'FEL



WELL DETAILS: Wells Ranch AE18-65-1HN

Ground Level: 4832.0
Northing: 1420805.55
Easting: 3313034.78
Latitude: 40.483060
Longitude: -104.374630

Plan: APD - Rev 0 (Wells Ranch AE18-65-1HN/Original Drilling)

Created By: Carrie Willers
Date: 11:53, March 09 2012

Checked: _____
Date: _____

Reviewed: _____
Date: _____

Approved: _____
Date: _____