
WILLIAMS PRODUCTION RMT INC - EBUS

**PA 521-29
PARACHUTE
Garfield County , Colorado**

Cement Surface Casing
08-Dec-2011

Post Job Report

The Road to Excellence Starts with Safety

Sold To #: 300721		Ship To #: 2893985		Quote #:		Sales Order #: 9084260	
Customer: WILLIAMS PRODUCTION RMT INC - EBUS				Customer Rep: Harrison, Jeremy			
Well Name: PA			Well #: 521-29			API/UWI #: 05-045-20257	
Field: PARACHUTE		City (SAP): PARACHUTE		County/Parish: Garfield		State: Colorado	
Lat: N 39.504 deg. OR N 39 deg. 30 min. 13.972 secs.				Long: W 108.019 deg. OR W -109 deg. 58 min. 51.179 secs.			
Contractor: NABORS			Rig/Platform Name/Num: NABORS 577				
Job Purpose: Cement Surface Casing							
Well Type: Development Well			Job Type: Cement Surface Casing				
Sales Person: MAYO, MARK			Srvc Supervisor: CHASTAIN, DERICK			MBU ID Emp #: 455848	

Job Personnel

HES Emp Name	Exp Hrs	Emp #	HES Emp Name	Exp Hrs	Emp #	HES Emp Name	Exp Hrs	Emp #
BROWN, TRAVIS A	7	396848	CHASTAIN, DERICK Allan	7	455848	LESTER, LEVI William	7	474117
MUHLESTEIN, RYAN Herrick	7	453609						

Equipment

HES Unit #	Distance-1 way	HES Unit #	Distance-1 way	HES Unit #	Distance-1 way	HES Unit #	Distance-1 way
10551730C	60 mile	10565341	60 mile	10804567	60 mile	10951250	60 mile
10973571	60 mile	6564	60 mile				

Job Hours

Date	On Location Hours	Operating Hours	Date	On Location Hours	Operating Hours	Date	On Location Hours	Operating Hours
12/8/2011	7	3						

TOTAL	Total is the sum of each column separately							
--------------	--	--	--	--	--	--	--	--

Job

Formation Name	Top	Bottom	Called Out	Date	Time	Time Zone
Formation Depth (MD)			On Location	07 - Dec - 2011	21:00	MST
Form Type	BHST		Job Started	08 - Dec - 2011	01:00	MST
Job depth MD	3066. ft	Job Depth TVD	3066. ft	Job Started	08 - Dec - 2011	06:53
Water Depth		Wk Ht Above Floor	4. ft	Job Completed	08 - Dec - 2011	08:19
Perforation Depth (MD)	From	To	Departed Loc	08 - Dec - 2011	09:00	MST

Well Data

Description	New / Used	Max pressure psig	Size in	ID in	Weight lbm/ft	Thread	Grade	Top MD ft	Bottom MD ft	Top TVD ft	Bottom TVD ft
OPEN HOLE				13.5				.	3066.	.	3066.
SURFACE CASING	Unknown		9.625	9.001	32.3		H-40	.	3047.	.	3047.

Sales/Rental/3rd Party (HES)

Description	Qty	Qty uom	Depth	Supplier
PLUG,CMTG,TOP,9 5/8,HWE,8.16 MIN/9.06 MA	1	EA		

Tools and Accessories

Type	Size	Qty	Make	Depth	Type	Size	Qty	Make	Depth	Type	Size	Qty	Make
Guide Shoe					Packer					Top Plug	9 5/8	1	HES
Float Shoe					Bridge Plug					Bottom Plug			
Float Collar					Retainer					SSR plug set			
Insert Float										Plug Container	9 5/8	1	HES
Stage Tool										Centralizers			

Miscellaneous Materials

Gelling Agt	Conc	Surfactant	Conc	Acid Type	Qty	Conc	%
Treatment Fld	Conc	Inhibitor	Conc	Sand Type	Size	Qty	

Fluid Data

Stage/Plug #: 1

Fluid #	Stage Type	Fluid Name	Qty	Qty uom	Mixing Density lbm/gal	Yield ft ³ /sk	Mix Fluid Gal/sk	Rate bbl/min	Total Mix Fluid Gal/sk
1	Water Spacer		20.00	bbl	8.34	.0	.0	4	
2	Lead Cement	VERSACEM (TM) SYSTEM (452010)	585.0	sacks	12.3	2.38	13.75	8	13.75
3	Tail Cement	VERSACEM (TM) SYSTEM (452010)	160.0	sacks	12.8	2.11	11.75	8	11.75
4	Displacement Fluid			bbl	8.34	.0	.0	10	
Calculated Values		Pressures		Volumes					
Displacement	235.6	Shut In: Instant		Lost Returns	0	Cement Slurry	308.1	Pad	
Top Of Cement	SURFACE	5 Min		Cement Returns	35	Actual Displacement	235.6	Treatment	
Frac Gradient		15 Min		Spacers	20	Load and Breakdown		Total Job	565
Rates									
Circulating	10	Mixing	8	Displacement	10	Avg. Job			8
Cement Left In Pipe	Amount	44.1 ft	Reason	Shoe Joint					
Frac Ring # 1 @	ID		Frac ring # 2 @	ID		Frac Ring # 3 @	ID		Frac Ring # 4 @
The Information Stated Herein Is Correct				Customer Representative Signature					

The Road to Excellence Starts with Safety

Sold To #: 300721	Ship To #: 2893985	Quote #:	Sales Order #: 9084260
Customer: WILLIAMS PRODUCTION RMT INC - EBUS		Customer Rep: Harrison, Jeremy	
Well Name: PA	Well #: 521-29	API/UWI #: 05-045-20257	
Field: PARACHUTE	City (SAP): PARACHUTE	County/Parish: Garfield	State: Colorado
Legal Description:			
Lat: N 39.504 deg. OR N 39 deg. 30 min. 13.972 secs.		Long: W 108.019 deg. OR W -109 deg. 58 min. 51.179 secs.	
Contractor: NABORS		Rig/Platform Name/Num: NABORS 577	
Job Purpose: Cement Surface Casing			Ticket Amount:
Well Type: Development Well		Job Type: Cement Surface Casing	
Sales Person: MAYO, MARK		Srv Supervisor: CHASTAIN, DERICK	MBU ID Emp #: 455848

Activity Description	Date/Time	Cht #	Rate bbl/min	Volume bbl		Pressure psig		Comments
				Stage	Total	Tubing	Casing	
Call Out	12/07/2011 21:00							
Pre-Convoy Safety Meeting	12/07/2011 23:00							WITH ALL HES PERSONNEL SAFE DRIVING PRACTICES AND TRAVEL ROUTE REVIEWED
Arrive at Location from Service Center	12/08/2011 01:00							RIG RUNNING CASING
Circulate Well	12/08/2011 04:00							CASING ON BOTTOM AT 0400, CIRC. 1 HR, 10 BPM, 480 PSI. MUD REPORT 9.0 PPG. ONLY SPUD REPORT AVAILABLE
Assessment Of Location Safety Meeting	12/08/2011 05:00							WITH ALL HES PERSONNEL
Pre-Rig Up Safety Meeting	12/08/2011 05:15							WITH ALL HES PERSONNEL
Rig-Up Equipment	12/08/2011 05:30							1 ELITE HT 400 PUMP, 1 660 BULK TRUCK, 1 1200 BULK STORAGE SILO, 1 F-450 PICK-UP, 1 PLUG CONTAINER, 2" IRON TO STAND PIPE
Pre-Job Safety Meeting	12/08/2011 06:30							WITH ALL HES PERSONNEL, RIG CREW AND CO REP
Start Job	12/08/2011 06:53							TD 3066', TP 3047', FC 3002.9', SJ 44.1', OH 13.5", SURFACE CASING 9.625" 32.3# H-40.
Pump Water	12/08/2011 06:54		2	2			105.0	FRESH H2O, TO PRIME LINES

Activity Description	Date/Time	Cht #	Rate bbl/min	Volume bbl		Pressure psig		Comments
				Stage	Total	Tubing	Casing	
Test Lines	12/08/2011 06:56							STAGED TEST AT 1373 PSI THEN TESTED TO 3040 PSI. HELD PSI 2 MIN, NO LEAKS
Pump Spacer 1	12/08/2011 07:00		4	20			116.0	FRESH H2O
Pump Lead Cement	12/08/2011 07:09		8	248			280.0	585 SKS 12.3 PPG 2.38 FT3/SK 13.75 GAL/SK WEIGHED VERIFIED VIA MUD SCALES WET AND DRY SAMPLES SUBMITTED
Pump Tail Cement	12/08/2011 07:40		8	60.1			288.0	160 SKS 12.8 PPG 2.11 FT3/SK 11.75 GAL/SK WEIGHED VERIFIED VIA MUD SCALES WET AND DRY SAMPLES SUBMITTED
Shutdown	12/08/2011 07:47						.0	WASH UP ON TOP OF PLUG
Drop Top Plug	12/08/2011 07:50							VERIFY PLUG LAUNCHED
Pump Displacement	12/08/2011 07:51		10	235.6			980.0	CMT RETURNS 200 BBLS INTO DIS, 35 BBLS TO SURFACE
Slow Rate	12/08/2011 08:16		2	225			780.0	SLOW RATE 10 BBLS PRIOR TO CALCULATED DISPLACEMENT
Bump Plug	12/08/2011 08:19		2	235.6			1157.0	PLUG BUMPED AT 780 PSI THEN PRESSURED UP TO 1157 PSI. BUMP PLUG HOLD 2 MINS
Check Floats	12/08/2011 08:22						.0	FLOATS HOLDING
End Job	12/08/2011 08:22							GOOD RETURNS THROUGHOUT JOB. NO ADD HOURS, NO DERRICK CHARGE, 80 LBS SUGAR USED
Pre-Rig Down Safety Meeting	12/08/2011 08:25							WITH ALL HES PERSONNEL
Rig-Down Equipment	12/08/2011 08:30							AREA FREE FROM DEBRIS
Pre-Convoy Safety Meeting	12/08/2011 08:50							WITH ALL HES PERSONNEL
Activity Description	Date/Time	Cht	Rate bbl/min	Volume bbl		Pressure psig		Comments

Sold To # : 300721

Ship To # :2893985

Quote # :

Sales Order # :

9084260

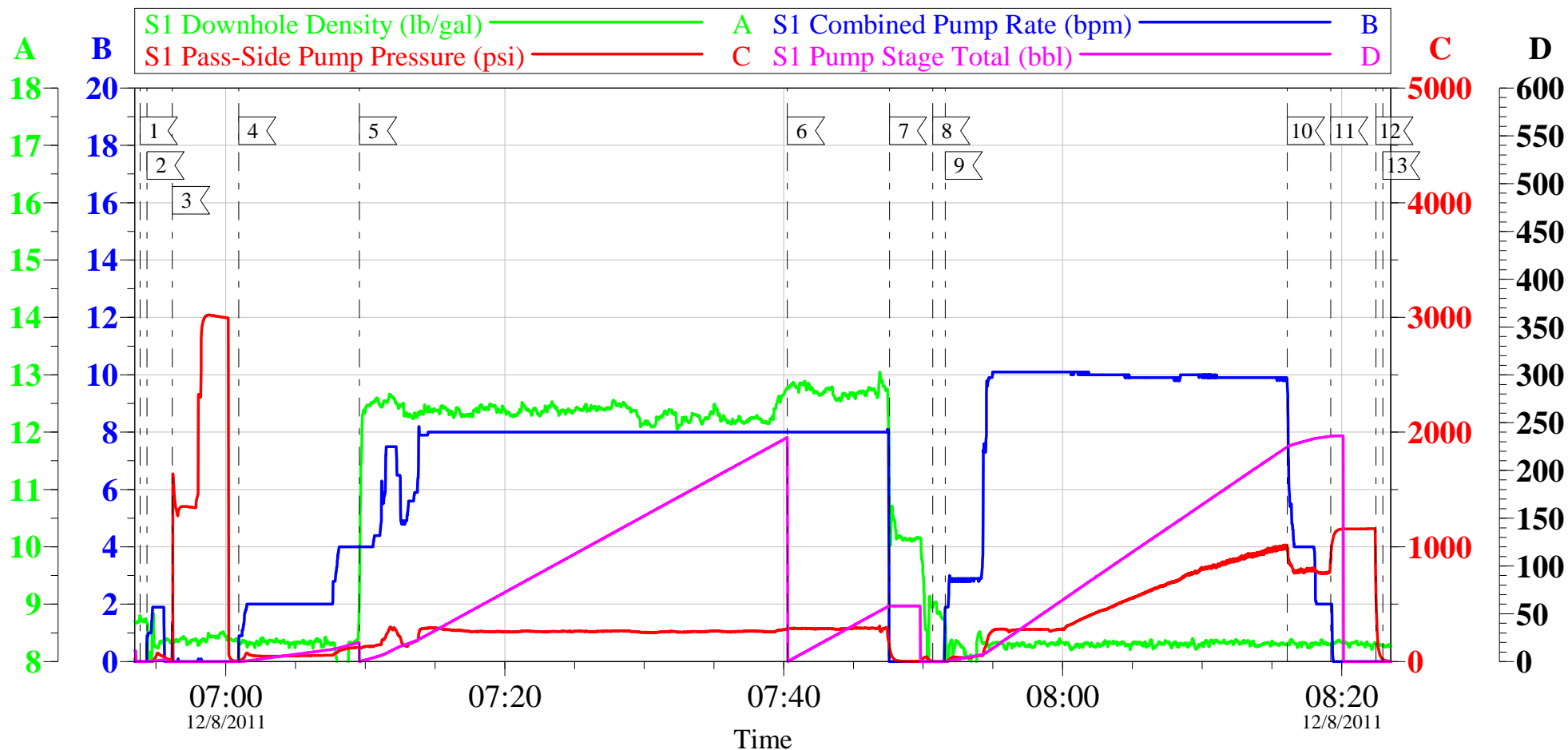
SUMMIT Version: 7.2.27

Saturday, December 10, 2011 11:47:00

		#		Stage	Total	Tubing	Casing	
Crew Leave Location	12/08/2011 09:00							THANK YOU FOR USING HALLIBURTON CEMENT DEPARTMENT. DERICK CHASTAIN AND CREW

WILLIAMS - PA 521-29

SURFACE CASING

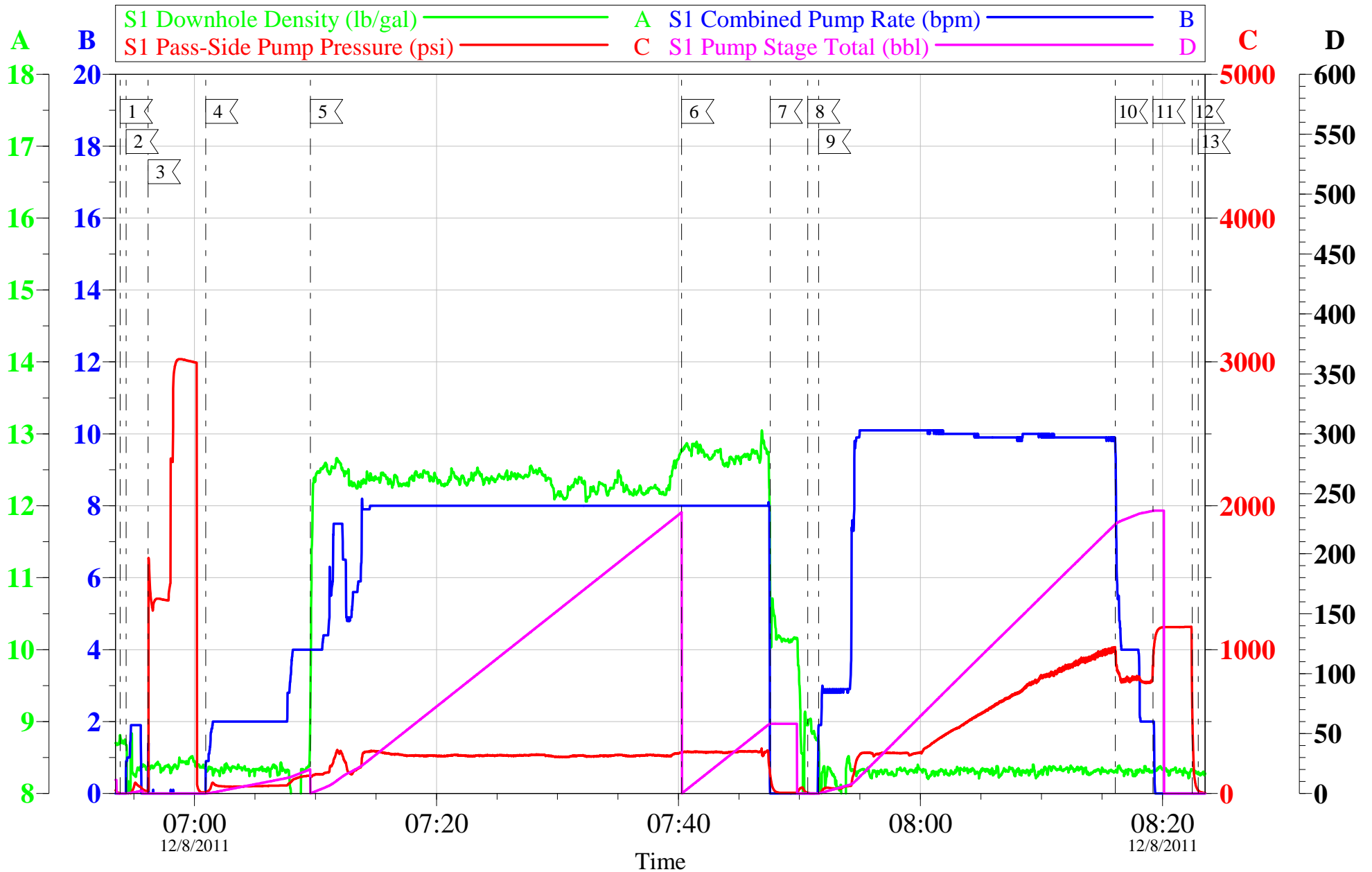


Customer: WILLIAMS	Job Date: 08-Dec-2011	Sales Order #: 9084260
Well Description: PA 521-29	Job Type: SURFACE	ADC Used: YES
Customer Rep: JEREMY HARRISON	Service Supervisor: DERICK CHASTAIN	Pump #/Operator: 2/LEVI LESTER

OptiCem v6.4.10
08-Dec-11 08:40

WILLIAMS - PA 521-29

SURFACE CASING



Customer: WILLIAMS	Job Date: 08-Dec-2011	Sales Order #: 9084260
Well Description: PA 521-29	Job Type: SURFACE	ADC Used: YES
Customer Rep: JEREMY HARRISON	Service Supervisor: DERICK CHASTAIN	Pump #/Operator: 2/LEVI LESTER

OptiCem v6.4.10
08-Dec-11 08:42

Sales Order #: 9084260	Line Item: 10	Survey Conducted Date: 12/8/2011
Customer: WILLIAMS PRODUCTION RMT INC - EBUS		Job Type (BOM): CMT SURFACE CASING BOM
Customer Representative: JEREMY HARRISON		API / UWI: (leave blank if unknown) 05-045-20257
Well Name: PA		Well Number: 521-29
Well Type: Development Well	Well Country: United States of America	
H2S Present:	Well State: Colorado	Well County: Garfield

Dear Customer,

We hope that you were satisfied with the service quality of this job performed by Halliburton. It is the aim of our management and service personnel to deliver equipment and service of a standard unmatched in the service sector of the energy industry.

Please take the time to let us know if our performance met with your satisfaction. Please be as critical as possible to ensure we constantly improve our service. Your comments are of great value to us and are intended for the exclusive use of Halliburton.

CUSTOMER SATISFACTION SURVEY

CATEGORY	CUSTOMER SATISFACTION RESPONSE	
Survey Conducted Date	The date the survey was conducted	12/8/2011
Survey Interviewer	The survey interviewer is the person who initiated the survey.	DERICK CHASTAIN (HB23225)
Customer Participation	Did the customer participate in this survey? (Y/N)	Yes
Customer Representative	Enter the Customer representative name	JEREMY HARRISON
HSE	Was our HSE performance satisfactory? Circle Y or N	Yes
Equipment	Were you satisfied with our Equipment? Circle Y or N	Yes
Personnel	Were you satisfied with our people? Circle Y or N	Yes
Customer Comment	Customer's Comment	NONE

CUSTOMER SIGNATURE

Sales Order #: 9084260	Line Item: 10	Survey Conducted Date: 12/8/2011
Customer: WILLIAMS PRODUCTION RMT INC - EBUS		Job Type (BOM): CMT SURFACE CASING BOM
Customer Representative: JEREMY HARRISON		API / UWI: (leave blank if unknown) 05-045-20257
Well Name: PA		Well Number: 521-29
Well Type: Development Well	Well Country: United States of America	
H2S Present:	Well State: Colorado	Well County: Garfield

KEY PERFORMANCE INDICATORS

General	
Survey Conducted Date The date the survey was conducted	12/8/2011

Cementing KPI Survey	
Type of Job Select the type of job. (Cementing or Non-Cementing)	0
Select the Maximum Deviation range for this Job What is the highest deviation for the job you just completed? This may not be the maximum well deviation.	Vertical
Total Operating Time (hours) Total Operating Hours Including Rig-up, Pumping, Rig-down. Enter in decimal format.	3
HSE Incident, Accident, Injury HSE Incident, Accident, Injury. This should be recordable incidents only.	No
Was the job purpose achieved? Was the job delivered correctly as per customer agreed design?	Yes
Operating Hours (Pumping Hours) Total number of hours pumping fluid on this job. Enter in decimal format.	2
Customer Non-Productive Rig Time (hrs) Lost time due to Halliburton in the start, execution, or completion of an ordered service or product, or delays in a follow-on service. Enter in decimal format. 0 if none.	0
Type of Rig Classification Job Was Performed Type Of Rig (classification) Job Was Performed On	Drilling Rig (Portable)
Number Of JSAs Performed Number Of Jsas Performed	8
Number of Unplanned Shutdowns Unplanned shutdown is when injection stops for any period of time.	0
Was this a Primary Cement Job (Yes / No)	Yes

Sales Order #: 9084260	Line Item: 10	Survey Conducted Date: 12/8/2011
Customer: WILLIAMS PRODUCTION RMT INC - EBUS		Job Type (BOM): CMT SURFACE CASING BOM
Customer Representative: JEREMY HARRISON		API / UWI: (leave blank if unknown) 05-045-20257
Well Name: PA		Well Number: 521-29
Well Type: Development Well	Well Country: United States of America	
H2S Present:	Well State: Colorado	Well County: Garfield

Primary Cement Job= Casing job, Liner job, or Tie-back job.	
Did We Run Wiper Plugs? Did We Run Top And Bottom Casing Wiper Plugs?	Top
Mixing Density of Job Stayed in Designed Density Range (0-100%) Density Range defined as +/- .20 ppg. Calculation: Total BBLs cement mixed at designed density divided by total BBLs of cement multiplied by 100	99
Was Automated Density Control Used? Was Automated Density Control (ADC) Used ?	Yes
Pump Rate (percent) of Job Stayed At Designed Pump Rate Pump Rate range defined as +/- 1bbl/min. Calculation: Total BBLs of fluid pumped at the designed rate divided by Total BBLs of fluid pumped, multiplied by 100	98
Nbr of Remedial Sqz Jobs Rqd - Competition Number Of Remedial Squeeze Jobs Required After Primary Job Performed By Competition	0
Nbr of Remedial Plug Jobs Rqd - HES Number Of Remedial Plug Jobs Needed After Primary Plug Pumped By HES	0
Nbr of Remedial Sqz Jobs Rqd - HES Number Of Remedial Squeeze Jobs Required After Primary Job Performed By HES	0