

Permit as horizontal Niobrara:

TMD = 11422.8', TVD = 6980' (Lateral Length of 4000.3')

13-3/4" hole with 9-5/8" surface casing: 550' and 276 sks.

8-3/4" hole with 7" intermediate casing: 7422.5' and 519 sks.

6-1/8" hole with 4-1/2" liner hung off at liner hanger (7235' TMD)

Please mark permit as tight hole

325 Loveland, CO 970-776-3321

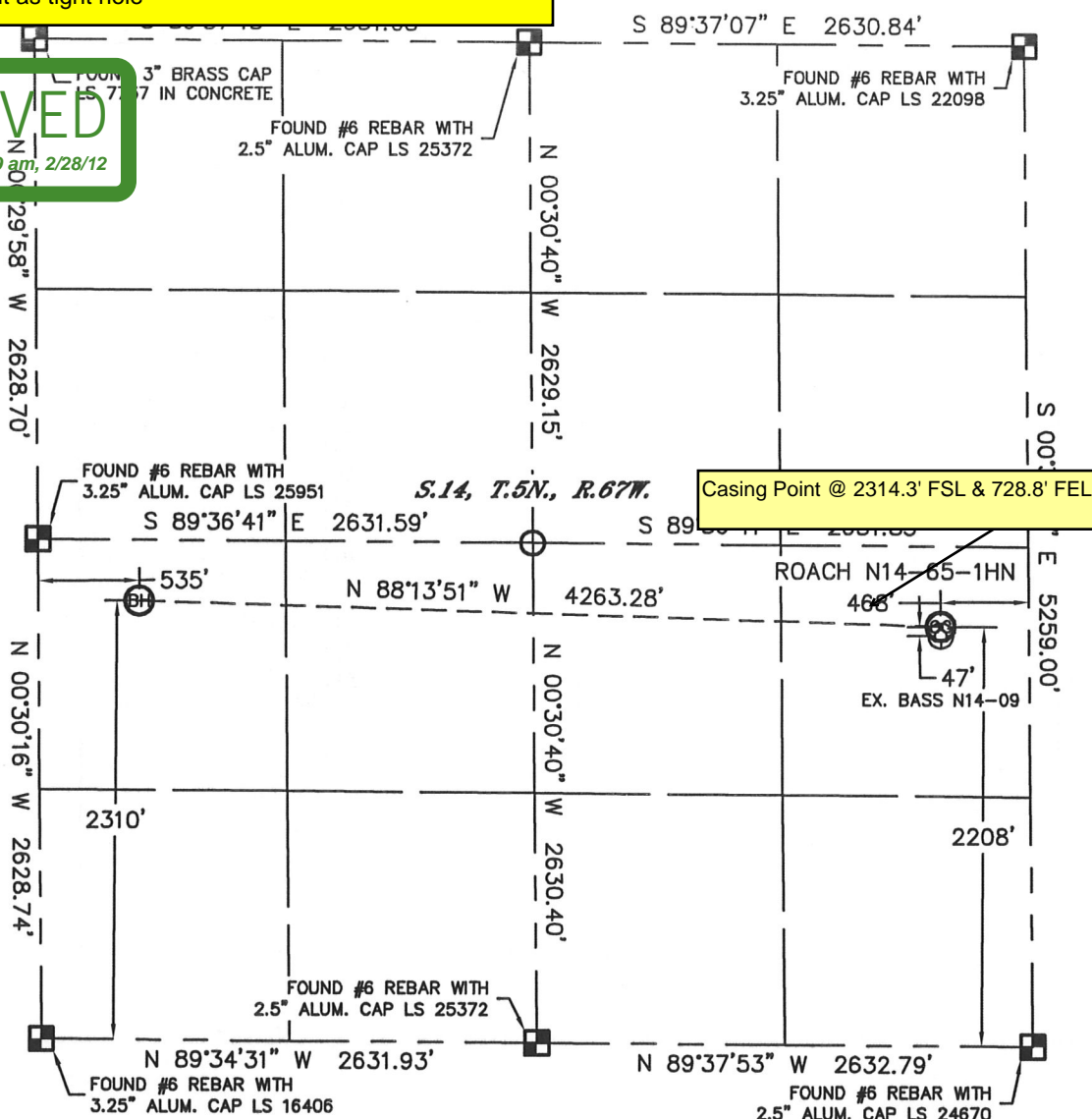
WELL LOCATION CERTIFICATE

PRESENT A BOUNDARY SURVEY

SECTION: 14
TOWNSHIP: 5N
RANGE: 67W

APPROVED

By brettfisher at 8:39 am, 2/28/12



In accordance with a request from Scott Lewis with Noble Energy Inc. Lat40', Inc. has determined the surface location of the ROACH N14-65-1HN to be 2208' from the SOUTH line and 468' from the EAST line and the bottom hole to be 2310' from the SOUTH line and 535' from the WEST line as measured at right angles from the section lines of Section 14, Township 5 North, Range 67 West of the Sixth Principal Meridian, County of Weld, State of Colorado.

I hereby state that this Well Location Certificate was prepared by me, or under my direct supervision, that the fieldwork was completed on 12/19/11, for and on behalf of Noble Energy Inc. That this is not a Land Survey Plat or an Improvement Survey Plat, and that it is not to be relied upon for establishment of fence, building, or other future Improvement lines.

NOTE:

- 1) Bearings shown are Grid Bearings of the Colorado State Plane Coordinate System, North Zone, North American Datum 1983/2007. The lineal dimensions as contained herein are based upon the "U.S. Survey Foot."
- 2) Ground elevations are based on an observed GPS elevation (NAVD 1988 DATUM).
- 3) NEAREST EXISTING WELL: BASS N14-09, 47'
- 4) IMPROVEMENTS: See LOCATION DRAWING for all visible improvements within 400' of disturbed area.
- 5) SURFACE USE: PASTURE
- 6) INSTRUMENT OPERATOR: ADAM KELLY

NOTE

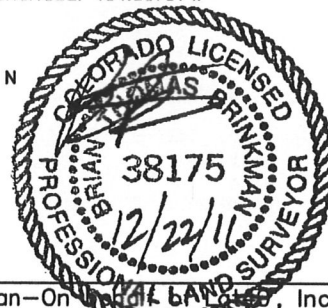
According to Colorado law, you must commence any legal action based upon any defect in this W.L.C. within three years after you discover such defect. In no event, may any action based upon any defect in this survey be commenced more than ten years after the date of the certificate shown hereon. (13-80-105 C.R.S.)

LEGEND

- = ALIQUOT MONUMENT AS DESCRIBED
- = CALCULATED POSITION

SURFACE LOCATION
LATITUDE: 40.39828°N
LONGITUDE: 104.85262°W
PDOP: 2.0
ELEV: 4934'
1/4, 1/4: NE1/4SE1/4
NEAREST PROPERTY LINE: 421' N

BOTTOM HOLE
LATITUDE: 40.39873°N
LONGITUDE: 104.86791°W

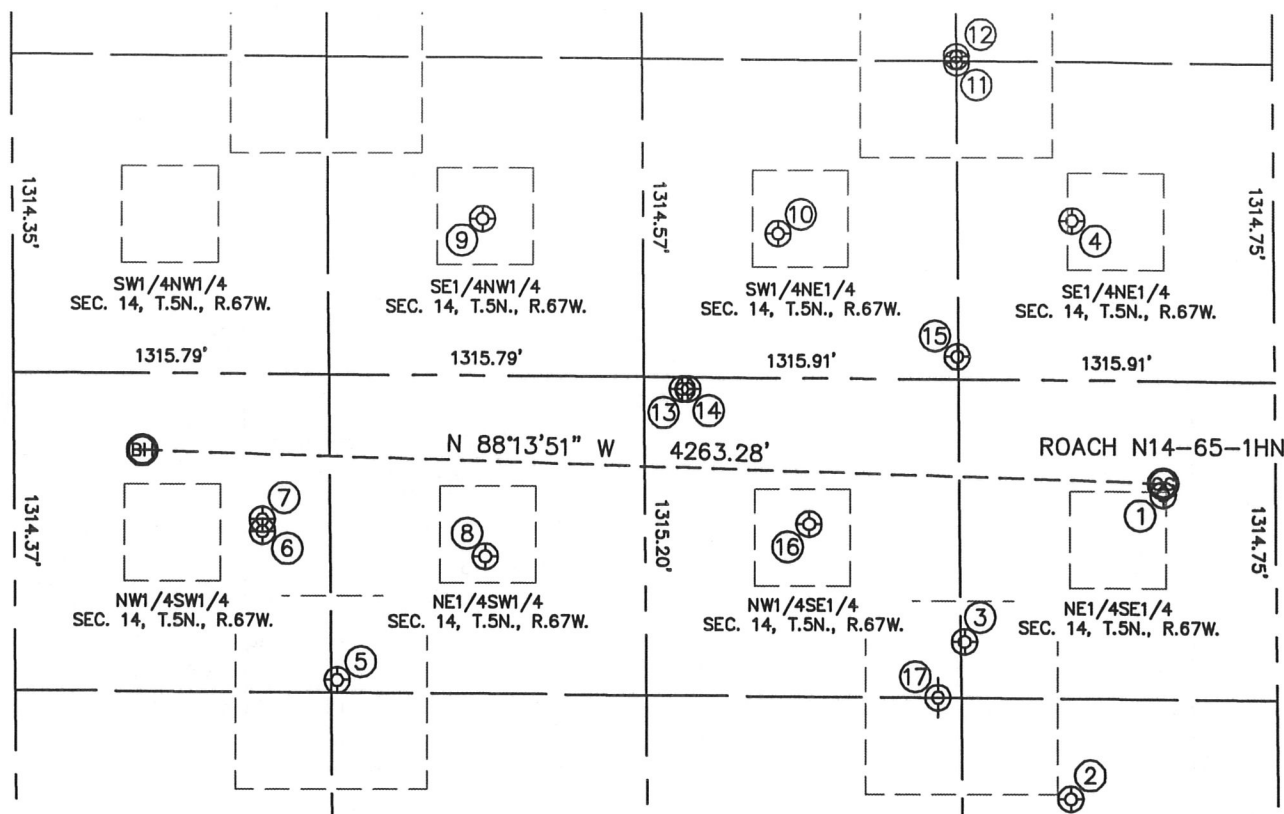


Brian T. Brinkman—On behalf of Noble Energy Inc.
Colorado Licensed Professional Land Surveyor No. 38175
DATE: 12/22/11
PROJECT#: 2011352

SITE SKETCH

ROACH N14-65-1HN

SECTION: 14
TOWNSHIP: 5N
RANGE: 67W



- | | | | | | |
|---|--|--|---|---|--|
| <p>①</p> <p>BASS N14-09
NE1/4SE1/4
2161' FSL
468' FEL
LAT-40.39815°N
LONG-104.85262°W
PDOP: 1.9
ELEV: 4933'</p> | <p>②</p> <p>BASS N14-16
SE1/4SE1/4
899' FSL
864' FEL
LAT-40.39471°N
LONG-104.85403°W
PDOP: 1.7
ELEV: 4932'</p> | <p>③</p> <p>ROACH N14-23
NE1/4SE1/4
1546' FSL
1300' FEL
LAT-40.39650°N
LONG-104.85561°W
PDOP: 1.7
ELEV: 4941'</p> | <p>④</p> <p>RAGAN N14-08
SE1/4NE1/4
1970' FNL
838' FEL
LAT-40.40126°N
LONG-104.85396°W
PDOP: 1.3
ELEV: 4939'</p> | <p>⑤</p> <p>GOLDBERG N14-25
NE1/4SW1/4
1367' FSL
1341' FWL
LAT-40.39611°N
LONG-104.86502°W
PDOP: 1.7
ELEV: 4956'</p> | <p>⑥</p> <p>GOLDBERG N14-12
NW1/4SW1/4
1980' FSL
1035' FWL
LAT-40.39780°N
LONG-104.86612°W
PDOP: 2.0
ELEV: 4966'</p> |
| <p>⑦</p> <p>GOLDBERG N14-20D
NW1/4SW1/4
2029' FSL
1034' FWL
LAT-40.39794°N
LONG-104.86612°W
PDOP: 1.5
ELEV: 4965'</p> | <p>⑧</p> <p>GOLDBERG N14-11
NE1/4SW1/4
1882' FSL
1963' FWL
LAT-40.39750°N
LONG-104.86279°W
PDOP: 2.1
ELEV: 4952'</p> | <p>⑨</p> <p>SHANNON 14-01
SE1/4NW1/4
1982' FNL
1962' FWL
LAT-40.40132°N
LONG-104.86280°W
PDOP: 1.0
ELEV: 4995'</p> | <p>⑩</p> <p>RAGAN N14-07
SW1/4NE1/4
2033' FNL
2067' FEL
LAT-40.40114°N
LONG-104.85837°W
PDOP: 1.6
ELEV: 4950'</p> | <p>⑪</p> <p>RAGAN N14-17
SE1/4NE1/4
1295' FNL
1314' FEL
LAT-40.40306°N
LONG-104.85567°W
PDOP: 1.3
ELEV: 4939'</p> | <p>⑫</p> <p>RAGAN N14-01
NE1/4NE1/4
1320' FNL
1314' FEL
LAT-40.40313°N
LONG-104.85567°W
PDOP: 1.2
ELEV: 4939'</p> |
| <p>⑬</p> <p>ROACH N14-18D
NW1/4SE1/4
2581' FSL
2472' FEL
LAT-40.39938°N
LONG-104.85982°W
PDOP: 1.1
ELEV: 4969'</p> | <p>⑭</p> <p>ROACH N14-21
NW1/4SE1/4
2582' FSL
2449' FEL
LAT-40.39938°N
LONG-104.85973°W
PDOP: 1.1
ELEV: 4969'</p> | <p>⑮</p> <p>ROACH N14-22
SW1/4NE1/4
2535' FNL
1320' FEL
LAT-40.39973°N
LONG-104.85569°W
PDOP: 1.1
ELEV: 4938'</p> | <p>⑯</p> <p>ROACH N14-10
NW1/4SE1/4
2027' FSL
1946' FEL
LAT-40.39784°N
LONG-104.85793°W
PDOP: 1.1
ELEV: 4940'</p> | <p>⑰</p> <p>BASS #N14-15
(PLUGGED & ABANDONED)
SW1/4SE1/4 (COGCC)
1315' FSL (COGCC)
1414' FEL (COGCC)
LAT-40.39575°N (COGCC)
LONG-104.85606°W (COGCC)
PDOP: N/A
ELEV: 4940' (COGCC)</p> | |

