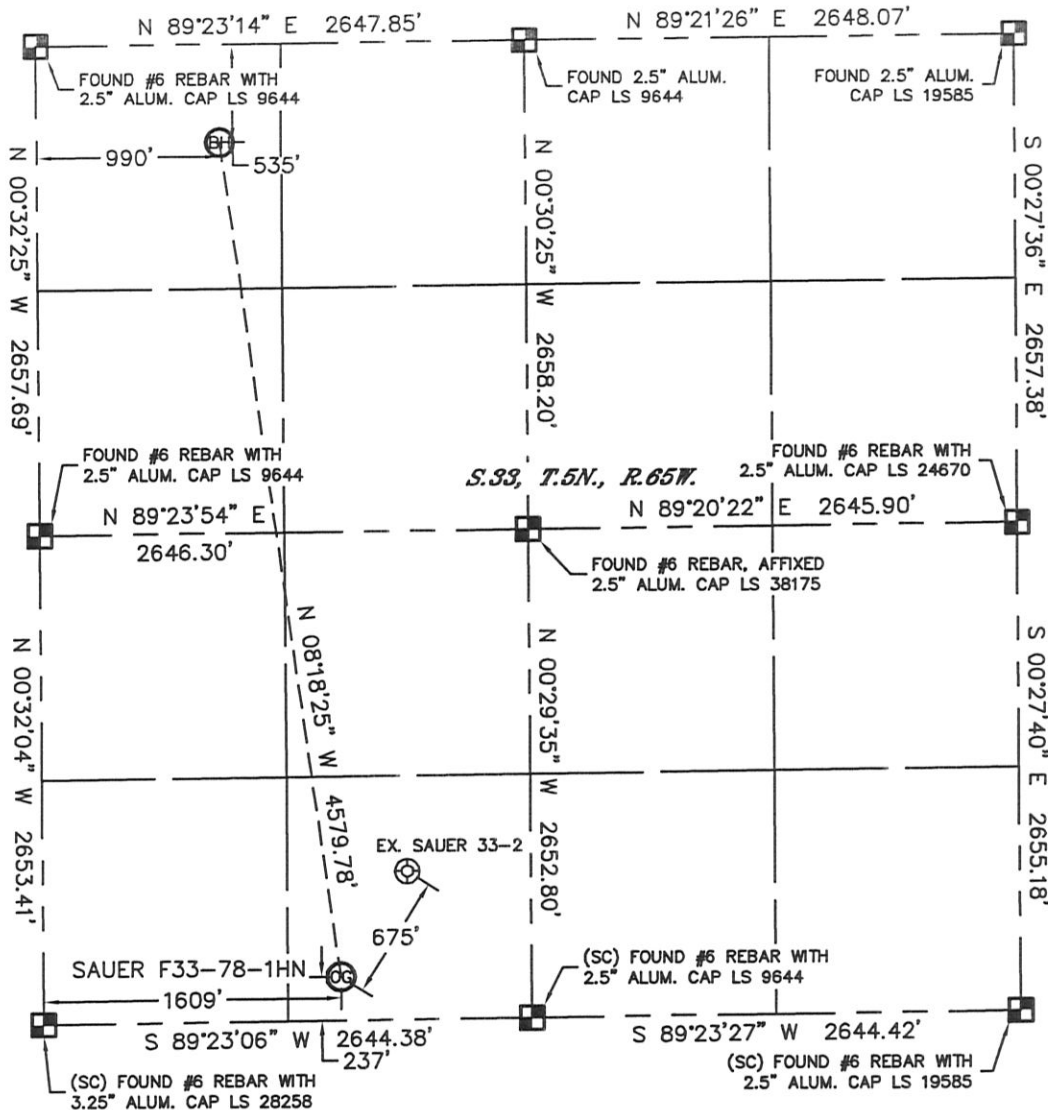


WELL LOCATION CERTIFICATE

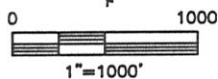
THIS MAP DOES NOT REPRESENT A BOUNDARY SURVEY

SECTION: 33
TOWNSHIP: 5N
RANGE: 65W



In accordance with a request from Jacob Rice with Noble Energy Inc., Lat40°, Inc. has determined the surface location of the SAUER F33-78-1HN to be 237' from the SOUTH line and 1609' from the WEST line and the bottom hole to be 535' from the NORTH line and 990' from the WEST line as measured at right angles from the section lines of Section 33, Township 5 North, Range 65 West of the Sixth Principal Meridian, County of Weld, State of Colorado.

I hereby state that this Well Location Certificate was prepared by me, or under my direct supervision, that the fieldwork was completed on 01/04/12, for and on behalf of Noble Energy Inc.. That this is not a Land Survey Plat or an Improvement Survey Plat, and that it is not to be relied upon for establishment of fence, building, or other future improvement lines.



NOTE:

- 1) Bearings shown are Grid Bearings of the Colorado State Plane Coordinate System, North Zone, North American Datum 1983/2007. The lineal dimensions as contained herein are based upon the "U.S. Survey Foot."
- 2) Ground elevations are based on an observed GPS elevation (NAVD 1988 DATUM).
- 3) NEAREST EXISTING WELL: SAUER 33-2, 675'
- 4) IMPROVEMENTS: See LOCATION DRAWING for all visible improvements within 400' of disturbed area.
- 5) SURFACE USE: CROP FIELD
- 6) INSTRUMENT OPERATOR: WYATT HALL

SURFACE LOCATION
LATITUDE: 40.34913°N
LONGITUDE: 104.67208°W
PDOP: 1.6
ELEV: 4670'
1/4, 1/4: SE1/4SW1/4
NEAREST PROPERTY LINE: 237' SOUTH

BOTTOM HOLE
LATITUDE: 40.36158°N
LONGITUDE: 104.67431°W

NOTE

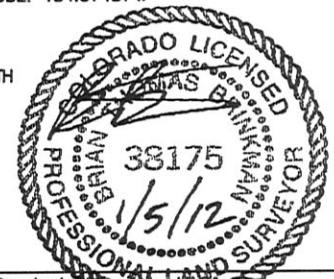
According to Colorado law, you must commence any legal action based upon any defect in this W.L.C. within three years after you discover such defect. In no event, may any action based upon any defect in this survey be commenced more than ten years after the date of the certificate shown hereon. (13-80-105 C.R.S.)

LEGEND

- = ALIQUOT MONUMENT AS DESCRIBED
- = CALCULATED POSITION

Brian T. Brinkman—On behalf of Lat40°, Inc.
Colorado Licensed Professional
Land Surveyor No. 38175

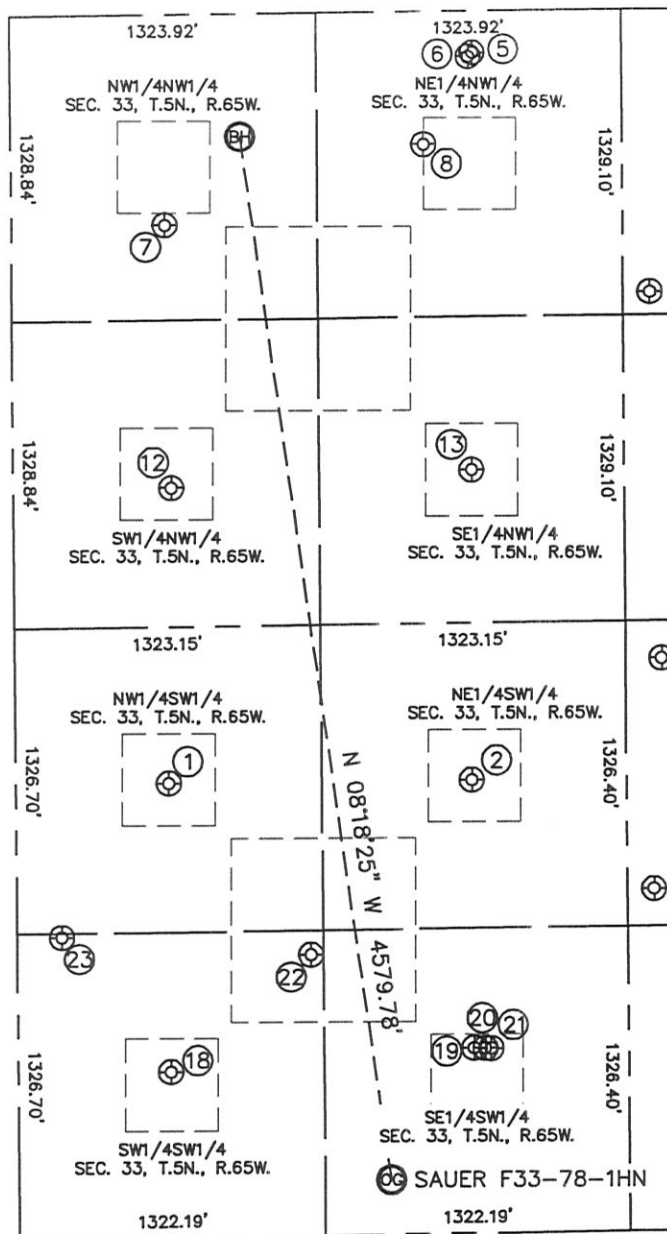
DATE: rev 01/05/12
PROJECT#: 2011334



SITE SKETCH

SAUER F33-78-1HN

SECTION: 33
TOWNSHIP: 5N
RANGE: 65W



- ①
KEISER 2
NW1/4SW1/4
1974' FSL
661' FWL
LAT-40.35389°N
LONG-104.67548°W
PDOP: 1.1
ELEV: 4664'

②
KEISER 1
NE1/4SW1/4
1970' FSL
1974' FWL
LAT-40.35389°N
LONG-104.67078°W
PDOP: 1.5
ELEV: 4662'

③
ALLES F33-29D
NE1/4NW1/4
182' FNL
2000' FWL
LAT-40.36256°N
LONG-104.67068°W
PDOP: 1.5
ELEV: 4664'

④
J ALLES 1
NW1/4NW1/4
915' FNL
663' FWL
LAT-40.36054°N
LONG-104.67548°W
PDOP: 1.5
ELEV: 4653'

⑤
ALLES 33-3
NE1/4NW1/4
578' FNL
1786' FWL
LAT-40.36147°N
LONG-104.67145°W
PDOP: 1.6
ELEV: 4664'

⑥
ALLES 33-4
SW1/4NW1/4
2054' FNL
682' FWL
LAT-40.35741°N
LONG-104.67541°W
PDOP: 1.5
ELEV: 4665'

⑦
ALLES 3
SE1/4NW1/4
1993' FNL
1984' FWL
LAT-40.35759°N
LONG-104.67074°W
PDOP: 1.9
ELEV: 4663'

⑧
SAUER 1
SW1/4SW1/4
721' FSL
659' FWL
LAT-40.35045°N
LONG-104.67549°W
PDOP: 2.2
ELEV: 4669'

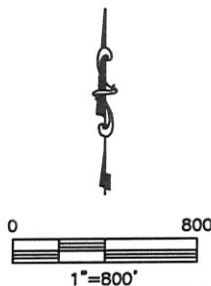
⑨
SAUER 33-2
SE1/4SW1/4
805' FSL
1973' FWL
LAT-40.35069°N
LONG-104.67078°W
PDOP: 2.9
ELEV: 4662'

⑩
SAUER G04-29D
SE1/4SW1/4
804' FSL
2022' FWL
LAT-40.35069°N
LONG-104.67060°W
PDOP: 2.7
ELEV: 4662'

⑪
SAUER G04-28D
SE1/4SW1/4
803' FSL
2047' FWL
LAT-40.35068°N
LONG-104.67051°W
PDOP: 1.9
ELEV: 4662'

⑫
SAUER F33-25
SW1/4SW1/4
1221' FSL
1269' FWL
LAT-40.35183°N
LONG-104.67330°W
PDOP: 1.2
ELEV: 4662'

⑬
SAUER F33-33
SW1/4SW1/4
1311' FSL
194' FWL
LAT-40.35207°N
LONG-104.67716°W
PDOP: 1.3
ELEV: 4665'



DATE: rev 01/05/12
PROJECT#: 2011334