

The Road to Excellence Starts with Safety

| | | | |
|---|------------------------------------|------------------------------------|------------------------|
| The Road to Excellence Starts With Safety | | | |
| Sold To #: 338668 | Ship To #: 2703521 | Quote #: | Sales Order #: 6450012 |
| Customer: CHEVRON - MID-CONTINENT EBIZ | | Customer Rep: MOELLER, RONNIE | |
| Well Name: SKR | | Well #: 598-36-BV-01 | API/UWI #: |
| Field: PICEANCE | City (SAP): PARACHUTE | County/Parish: Garfield | State: Colorado |
| Contractor: H&P 316 | | Rig/Platform Name/Num: H&P 316 | |
| Job Purpose: Cement Production Casing | | | |
| Well Type: Development Well | | Job Type: Cement Production Casing | |
| Sales Person: HARTLEY, RICHARD | Srvc Supervisor: CALDWELL, JEFFREY | | MBU ID Emp #: 369111 |

Job Personnel

| HES Emp Name | Exp Hrs | Emp # | HES Emp Name | Exp Hrs | Emp # | HES Emp Name | Exp Hrs | Emp # |
|----------------------|---------|--------|-----------------------|---------|--------|----------------------|---------|--------|
| BARKER, RYAN | 6.5 | 458751 | CALDWELL, JEFFREY S | 6.5 | 369111 | MADRIGAL, MARK Henry | 6.5 | 444368 |
| PHILLIPS, MARK Bejar | 6.5 | 445272 | SMITH, DUSTIN Michael | 6.5 | 418015 | | | |

Equipment

| HES Unit # | Distance-1 way | HES Unit # | Distance-1 way | HES Unit # | Distance-1 way | HES Unit # | Distance-1 way |
|------------|----------------|------------|----------------|------------|----------------|------------|----------------|
| 10025029 | 120 mile | 10214529C | 120 mile | 10719782 | 120 mile | 10722398 | 120 mile |
| 10724583 | 120 mile | 10969711 | 120 mile | | | | |

Job Hours

| Date | On Location Hours | Operating Hours | Date | On Location Hours | Operating Hours | Date | On Location Hours | Operating Hours |
|----------|-------------------|-----------------|------|-------------------|-----------------|------|-------------------|-----------------|
| 01/20/09 | 6.5 | 1.5 | | | | | | |

| | | | | | | | | |
|-------|--|--|--|--|--|--|--|--|
| TOTAL | Total is the sum of each column separately | | | | | | | |
|-------|--|--|--|--|--|--|--|--|

Job

| Formation Name | | | | | Job Times | | | |
|------------------------|-------------------|--------|---------------|----------|---------------|-----------------|-------|-----------|
| Formation Depth (MD) | Top | Bottom | | | Called Out | Date | Time | Time Zone |
| Form Type | BHST | | | | On Location | 20 - Jan - 2009 | 09:00 | MST |
| Job depth MD | 6055. ft | | Job Depth TVD | 6055. ft | Job Started | 20 - Jan - 2009 | 12:08 | MST |
| Water Depth | Wk Ht Above Floor | | 5. ft | | Job Completed | 20 - Jan - 2009 | 13:25 | MST |
| Perforation Depth (MD) | From | To | | | Departed Loc | 20 - Jan - 2009 | 15:30 | MST |

Well Data

| Description | New / Used | Max pressure psig | Size in | ID in | Weight lbm/ft | Thread | Grade | Top MD ft | Bottom MD ft | Top TVD ft | Bottom TVD ft |
|-------------------|------------|-------------------|---------|-------|---------------|--------|-------|-----------|--------------|------------|---------------|
| Production Casing | Unknown | | 4.5 | 4. | 11.6 | | | . | 6029. | . | 6029. |

Sales/Rental/3rd Party (HES)

| Description | Qty | Qty uom | Depth | Supplier |
|--|-----|---------|-------|----------|
| PLUG,CMTG,TOP,4 1/2,HWE,3.65 MIN/4.14 MA | 1 | EA | | |

Tools and Accessories

| Type | Size | Qty | Make | Depth | Type | Size | Qty | Make | Depth | Type | Size | Qty | Make |
|--------------|------|-----|------|-------|-------------|------|-----|------|-------|----------------|------|-----|------|
| Guide Shoe | | | | | Packer | | | | | Top Plug | 4.5 | 1 | |
| Float Shoe | | | | | Bridge Plug | | | | | Bottom Plug | | | |
| Float Collar | | | | | Retainer | | | | | SSR plug set | | | |
| Insert Float | | | | | | | | | | Plug Container | 4.5 | 1 | |
| Stage Tool | | | | | | | | | | Centralizers | | | |

Miscellaneous Materials

| Gelling Agt | Conc | Surfactant | Conc | Acid Type | Qty | Conc | % |
|---------------|------|------------|------|-----------|------|------|---|
| Treatment Fld | Conc | Inhibitor | Conc | Sand Type | Size | Qty | |

| Fluid Data | | | | | | | | | | |
|--|------------------|-----------------------------------|--------|-----------------------------------|------------------------|---------------------------|------------------|--------------|------------------------|--|
| Stage/Plug #: 1 | | | | | | | | | | |
| Fluid # | Stage Type | Fluid Name | Qty | Qty uom | Mixing Density lbm/gal | Yield ft ³ /sk | Mix Fluid Gal/sk | Rate bbl/min | Total Mix Fluid Gal/sk | |
| 1 | Water Spacer | | 50 | bbl | 8.33 | .0 | .0 | 7.0 | | |
| 2 | Lead Cement | VARICEM (TM) CEMENT (452009) | 315 | sacks | 12.8 | 1.55 | 7.15 | 7.0 | | |
| 10.592 Gal | | FRESH WATER | | | | | | | | |
| Gal | | FRESH WATER | | | | | | | | |
| 3 | Tail Cement | VARICEM (TM) CEMENT (452009) | 627 | sacks | 13.2 | 1.43 | 6.19 | 7.0 | 5.69 | |
| 5.692 Gal | | FRESH WATER | | | | | | | | |
| 4 | KCL DISPLACEMENT | | 92.7 | bbl | 8.45 | .0 | .0 | 8.0 | | |
| 0 lbm/bbl | | POTASSIUM CHLORIDE 7% (100001585) | | | | | | | | |
| Calculated Values | | Pressures | | Volumes | | | | | | |
| Displacement | 92.7 | Shut In: Instant | | Lost Returns | 0 | Cement Slurry | 233.5 | Pad | | |
| Top Of Cement | 963 | 5 Min | | Cement Returns | 0 | Actual Displacement | 92 | Treatment | | |
| Frac Gradient | | 15 Min | | Spacers | 50 | Load and Breakdown | | Total Job | 375.5 | |
| Rates | | | | | | | | | | |
| Circulating | RIG | Mixing | 7 | Displacement | 8 | Avg. Job | 7.5 | | | |
| Cement Left In Pipe | Amount | 48 ft | Reason | Shoe Joint | | | | | | |
| Frac Ring # 1 @ | ID | Frac ring # 2 @ | ID | Frac Ring # 3 @ | ID | Frac Ring # 4 @ | ID | | | |
| The Information Stated Herein Is Correct | | | | Customer Representative Signature | | | | | | |

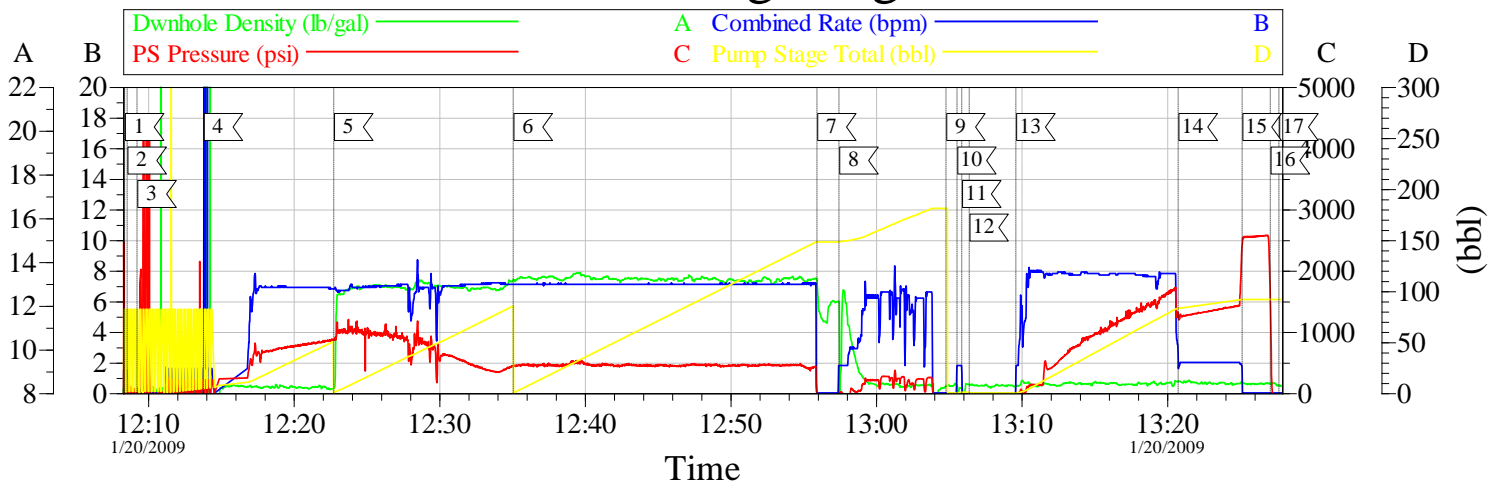
The Road to Excellence Starts with Safety

| | | | | | | | |
|---|--|------------------------------|---|--|--|-------------------------------|--|
| Sold To #: 338668 | | Ship To #: 2703521 | | Quote #: | | Sales Order #: 6450012 | |
| Customer: CHEVRON - MID-CONTINENT EBIZ | | | | Customer Rep: MOELLER, RONNIE | | | |
| Well Name: SKR | | | Well #: 598-36-BV-01 | | | API/UWI #: | |
| Field: PICEANCE | | City (SAP): PARACHUTE | | County/Parish: Garfield | | State: Colorado | |
| Legal Description: | | | | | | | |
| Lat: N 0 deg. OR N 0 deg. 0 min. 0 secs. | | | | Long: E 0 deg. OR E 0 deg. 0 min. 0 secs. | | | |
| Contractor: H&P 316 | | | Rig/Platform Name/Num: H&P 316 | | | | |
| Job Purpose: Cement Production Casing | | | | | | Ticket Amount: | |
| Well Type: Development Well | | | Job Type: Cement Production Casing | | | | |
| Sales Person: HARTLEY, RICHARD | | | Srvc Supervisor: CALDWELL, JEFFREY | | | MBU ID Emp #: 369111 | |

| Activity Description | Date/Time | Cht # | Rate bbl/min | Volume bbl | | Pressure psig | | Comments |
|---------------------------------------|------------------|-------|--------------|------------|-------|---------------|--------|--|
| | | | | Stage | Total | Tubing | Casing | |
| Call Out | 01/20/2009 03:00 | | | | | | | ELITE #12 |
| Crew Leave Yard | 01/20/2009 05:00 | | | | | | | PLUG CONTAINER #D0040 |
| Arrive At Loc | 01/20/2009 09:00 | | | | | | | CASING WAS STILL BEING RUN |
| Assessment Of Location Safety Meeting | 01/20/2009 09:05 | | | | | | | |
| Rig-Up Equipment | 01/20/2009 09:10 | | | | | | | |
| Safety Huddle | 01/20/2009 11:35 | | | | | | | |
| Start Job | 01/20/2009 12:08 | | | | | | | TD:6055 TP:6029 SJ:48 MUD:10.3 PPG 7 7/8" HOLE |
| Prime Pumps | 01/20/2009 12:08 | | 1.5 | 1.5 | 1.5 | | 250.0 | H2O |
| Test Lines | 01/20/2009 12:09 | | | | | 4500.0 | | |
| Pump Spacer 1 | 01/20/2009 12:13 | | 7 | 50 | 50 | | 850.0 | H2O. 10 LBS POLYFLAKE AND RED DYE FIRST 10 BBLS. |
| Pump Lead Cement | 01/20/2009 12:22 | | 7 | 87 | 85.5 | | 450.0 | 315 SKS 12.8 PPG 1.55 CUFT/SAK 7.15 GAL/SAK |
| Pump Tail Cement | 01/20/2009 12:35 | | 7 | 159.7 | 148 | | 420.0 | 627 SKS 13.2 PPG 1.43 CUFT/SAK 6.19 GAL/SAK |
| Shutdown | 01/20/2009 12:55 | | | | | | | EACH TIER OF CEMENT WAS WEIGHED. WEIGHED CORRECT ACCORDING TO MUD SCALE. |

| Activity Description | Date/Time | Cht # | Rate bbl/min | Volume bbl | | Pressure psig | | Comments |
|----------------------|------------------|-------|--------------|------------|-------|---------------|--------|--|
| | | | | Stage | Total | Tubing | Casing | |
| Clean Lines | 01/20/2009 12:57 | | | | | | | H2O |
| Drop Plug | 01/20/2009 13:04 | | | | | | | PLUG DID NOT IMMEDIATLY LEAVE HEAD. WE SHUT DOWN AND I KNOCKED IT DOWN THRU PLUG CONTAINER. PLUG AWAY. |
| Pump Displacement | 01/20/2009 13:09 | | 8 | 92.7 | 92 | | 1690.0 | KCL H2O. 1.5 BAGS KCL PER 10 BBLS. |
| Slow Rate | 01/20/2009 13:20 | | 2 | 83 | 83 | | 1400.0 | |
| Bump Plug | 01/20/2009 13:25 | | 2 | 92.7 | 92 | | 2560.0 | PLUG BUMPED. 12 BBLS OF WATER SPACER BACK TO PIT. |
| Check Floats | 01/20/2009 13:27 | | | | | | | FLOATS HELD 1 BBL BACK. GOOD CIRCULATION THROUGH OUT JOB. |
| End Job | 01/20/2009 13:27 | | | | | | | THANK YOU FOR CHOOSING HALLIBURTON JEFF CALDWELL AND CREW. |

4 1/2" Longstring



Event Log

| Intersection | PP | Intersection | PP |
|----------------------|-----------------|-----------------------------------|-----------------|
| 1 START JOB | 12:08:24 240.0 | 2 PRIME LINES | 12:08:35 162.8 |
| 3 TEST LINES | 12:09:15 72.00 | 4 PUMP SPACER | 12:13:49 5.134 |
| 5 PUMP LEAD CEMENT | 12:22:46 860.5 | 6 PUMP TAIL CEMENT | 12:35:06 438.0 |
| 7 SHUT DOWN | 12:55:57 17.04 | 8 CLEAN PUMPS AND LINES | 12:57:28 -7.608 |
| 9 DROP TOP PLUG | 13:04:49 -46.00 | 10 PUMP DISPLACEMENT | 13:05:34 -44.04 |
| 11 SHUT DOWN | 13:05:55 -36.52 | 12 KNOCK PLUG DOWN PLUG CONTAINER | 13:06:25 -47.00 |
| 13 PUMP DISPLACEMENT | 13:09:38 -38.36 | 14 SLOW RATE | 13:20:47 1277 |
| 15 BUMP PLUG | 13:25:10 2401 | 16 CHECK FLOATS/FLOATS HELD | 13:27:06 1526 |
| 17 END JOB | 13:27:42 -61.00 | | |

| | | |
|-------------------------------|------------------------------|-------------------------------------|
| Customer: Chevron | Job Date: 01/20/09 | Ticket #: 6450012 |
| Well Number: SKR 598-36-BV-01 | Job Type: 4.5 Production | ADC Used: Yes |
| Supervisor: Jeff Caldwell | Company Rep.: Ronnie Moeller | Pump/Operator Elite 12/Dustin Smith |

TG Version G3.4.1
18-Apr-12 15:56