

HALLIBURTON

**CHEVRON - MID-CONTINENT EBIZ
11111 S WILCREST DR - DO NOT MAIL
HOUSTON, Texas**

SKR
SKR 598-36-BV-17

H&P 316/H&P/316

Post Job Summary

Cement Surface Casing

Prepared for:
Date Prepared:
Version: 1

Service Supervisor: Main, Chad

Submitted by:

HALLIBURTON

The Road to Excellence Starts with Safety

Sold To #: 338668	Ship To #: 2695493	Quote #:	Sales Order #: 6421417
Customer: CHEVRON - MID-CONTINENT EBIZ		Customer Rep: DOHERTY, ED	
Well Name: SKR	Well #: 598-36-BV-17	API/UWI #:	
Field: SKINNER RIDGE	City (SAP): PARACHUTE	County/Parish: Garfield	State: Colorado
Contractor: H&P 316	Rig/Platform Name/Num: H&P 316		
Job Purpose: Cement Surface Casing			
Well Type: Development Well		Job Type: Cement Surface Casing	
Sales Person: DUNNING, DUSTIN		Srv Supervisor: Main, Chad	MBU ID Emp #: 335770

Job Personnel

HES Emp Name	Exp Hrs	Emp #	HES Emp Name	Exp Hrs	Emp #	HES Emp Name	Exp Hrs	Emp #
BORSZICH, STEPHEN A	8	412388	HANSON, MARK Richard	8	350530	HODO, RICHARD Leon	8	413108
HOEY, ROBERT Ross	8	399757			335770	MAIN, CHAD R	8	335770
SALAZAR, PAUL Omar	8	445614						

Equipment

HES Unit #	Distance-1 way	HES Unit #	Distance-1 way	HES Unit #	Distance-1 way	HES Unit #	Distance-1 way
10219244C	120 mile	10867531	120 mile	10951244	120 mile	10989685	120 mile

Job Hours

Date	On Location Hours	Operating Hours	Date	On Location Hours	Operating Hours	Date	On Location Hours	Operating Hours
01/03/09	4	.5	01/04/09	4				
TOTAL			Total is the sum of each column separately					

Job

Formation Name	Formation Depth (MD)	Top	Bottom	Form Type	Job depth MD	Job Depth TVD	Water Depth	Perforation Depth (MD)	From	To	Job Times	Date	Time	Time Zone
				BHST	1060. ft	1060. ft					Called Out	03 - Jan - 2009	16:00	MST
											On Location	03 - Jan - 2009	20:00	MST
											Job Started	04 - Jan - 2009	01:24	MST
											Job Completed	04 - Jan - 2009	02:09	MST
											Departed Loc	04 - Jan - 2009	04:00	MST

Well Data

Description	New / Used	Max pressure psig	Size in	ID in	Weight lbm/ft	Thread	Grade	Top MD ft	Bottom MD ft	Top TVD ft	Bottom TVD ft
-------------	------------	-------------------	---------	-------	---------------	--------	-------	-----------	--------------	------------	---------------

Sales/Rental/3rd Party (HES)

Description	Qty	Qty uom	Depth	Supplier
PORT. DAS W/CEMWIN;ACQUIRE W/HES, ZI	1	JOB		
ADC (AUTO DENSITY CTRL) SYS, /JOB,ZI	1	JOB		
PLUG,CMTG,TOP,8 5/8,HWE,7.20 MIN/8.09 MA	1	EA		

Tools and Accessories

Type	Size	Qty	Make	Depth	Type	Size	Qty	Make	Depth	Type	Size	Qty	Make
Guide Shoe					Packer					Top Plug			
Float Shoe					Bridge Plug					Bottom Plug			
Float Collar					Retainer					SSR plug set			
Insert Float										Plug Container			
Stage Tool										Centralizers			

Miscellaneous Materials

Gelling Agt	Conc	Surfactant	Conc	Acid Type	Qty	Conc	%
Treatment Fld	Conc	Inhibitor	Conc	Sand Type	Size	Qty	

Cementing Job Summary

Stage/Plug #: 1		Fluid Data							
Fluid #	Stage Type	Fluid Name	Qty	Qty uom	Mixing Density lbm/gal	Yield ft ³ /sk	Mix Fluid Gal/sk	Rate bbl/min	Total Mix Fluid Gal/sk
1	DYE POLYFLAKE SPACER		30.00	bbl	.	.0	.0	.0	
2	Lead Cement	VERSACEM (TM) SYSTEM (452010)	140.0	sacks	12.3	2.38	13.75		
	2 %	CAL-SEAL 60, 50 LB BAG (101217146)							
	2 %	ECONOLITE (100001580)							
	0.3 %	VERSASET, 55 LB SK (101376573)							
	5.64 lbm	SALT, 100 LB BAG (100003652)							
	0.125 lbm	POLY-E-FLAKE (101216940)							
	0.25 %	D-AIR 3000 (101007446)							
	13.75 Gal	FRESH WATER							
3	Tail Cement	VERSACEM (TM) SYSTEM (452010)	150.0	sacks	12.8	2.11	11.75		
	2 %	CAL-SEAL 60, 50 LB BAG (101217146)							
	2 %	ECONOLITE (100001580)							
	0.3 %	VERSASET, 55 LB SK (101376573)							
	5.64 lbm	SALT, 100 LB BAG (100003652)							
	11.75 Gal	FRESH WATER							
4	DISPLACEMENT		62.00	bbl	.	.0	.0	.0	
Calculated Values		Pressures		Volumes					
Displacement	61.9	Shut In: Instant		Lost Returns	0	Cement Slurry	115.6	Pad	
Top Of Cement	SURFACE	5 Min		Cement Returns	10	Actual Displacement	62	Treatment	
Frac Gradient		15 Min		Spacers	30	Load and Breakdown		Total Job	
Rates									
Circulating	4	Mixing	8	Displacement	8	Avg. Job	8		
Cement Left In Pipe	Amount	47.86 ft	Reason	Shoe Joint					
Frac Ring # 1 @	ID	Frac ring # 2 @	ID	Frac Ring # 3 @	ID	Frac Ring # 4 @	ID		
The Information Stated Herein Is Correct				Customer Representative Signature					

The Road to Excellence Starts with Safety

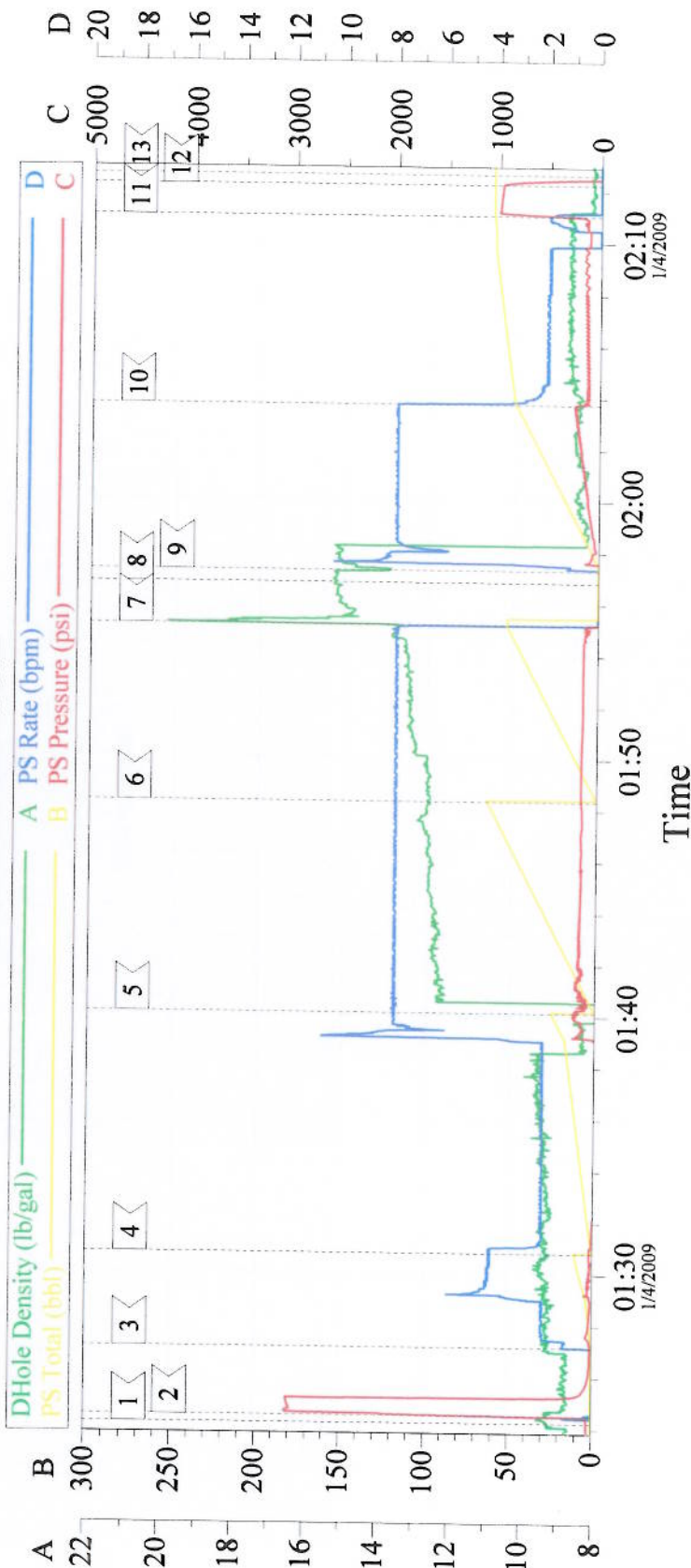
Sold To #: 338668		Ship To #: 2695493		Quote #:		Sales Order #: 6421417	
Customer: CHEVRON - MID-CONTINENT EBIZ				Customer Rep: DOHERTY, ED			
Well Name: SKR		Well #: 598-36-BV-17		API/UWI #:			
Field: SKINNER RIDGE		City (SAP): PARACHUTE		County/Parish: Garfield		State: Colorado	
Legal Description:							
Lat:				Long:			
Contractor: H&P 316		Rig/Platform Name/Num: H&P 316					
Job Purpose: Cement Surface Casing				Ticket Amount:			
Well Type: Development Well		Job Type: Cement Surface Casing					
Sales Person: DUNNING, DUSTIN		Srv Supervisor: Main, Chad		MBU ID Emp #: 335770			

Activity Description	Date/Time	Cht #	Rate bbl/min	Volume bbl		Pressure psig		Comments
				Stage	Total	Tubing	Casing	
Arrive At Loc	01/03/2009 20:00							TD 1060' CSG 1021.86' SJ 47.86' MUD 9.5 PPG 8 5/8" CSG 12 1/4" HOLE OFF LINE CEMENT JOB
Assessment Of Location Safety Meeting	01/03/2009 20:10							RIG WAS STILL RUNNING CASING WHEN HES ARRIVED
Pre-Rig Up Safety Meeting	01/03/2009 23:20							
Rig-Up Equipment	01/03/2009 23:30							HES HAD TO WAIT FOR RIG TO MOVE BEFORE RIGGING UP
Rig-Up Completed	01/04/2009 01:00							
Pre-Job Safety Meeting	01/04/2009 01:05							RIG CIRCULATED ON WELL 3 HR BEFORE STARTING CEMENT JOB
Start Job	01/04/2009 01:24							NO PIPE MOVEMENT DURING CEMENT JOB
Pressure Test	01/04/2009 01:25						3000. 0	
Pump Spacer 2	01/04/2009 01:27		4	10			27.0	10 LBS PLOYFLAKE AND DYE
Pump Spacer 1	01/04/2009 01:30		2	20			27.0	H2O SPACER HES HAD FULL CIRCULATION ENTIRE JOB
Pump Lead Cement	01/04/2009 01:40		8	59.3			160.0	140 SKS AT 12.3 PPG 2.38 FT3/SK 13.75 GAL/SK
Pump Tail Cement	01/04/2009 01:48		8	56.3			149.0	150 SKS AT 12.8 PPG 2.11 FT3/SK 11.75 GAL/SK

Cementing Job Log

Activity Description	Date/Time	Cht #	Rate bbl/min	Volume bbl		Pressure psig		Comments
				Stage	Total	Tubing	Casing	
Shutdown	01/04/2009 01:55							
Drop Top Plug	01/04/2009 01:56							
Pump Displacement	01/04/2009 01:57		8	61.9			62.0	DISPLACE WITH H2O
Bump Plug	01/04/2009 02:11		2	61.9			1330.0	PER CUSTOMER HE WANTS 1000 PSI OVER CALCULATED LAND PSI
Check Floats	01/04/2009 02:12							FLOATS HELD
End Job	01/04/2009 02:13							HES RETURNED TO SURFACE 10 BBLS OF CEMENT
Pre-Rig Down Safety Meeting	01/04/2009 02:20							
Rig-Down Equipment	01/04/2009 02:30							
Rig-Down Completed	01/04/2009 03:30							
Depart Location for Service Center or Other Site	01/04/2009 04:00							
Other	01/04/2009 04:01							THANK YOU FOR USING HALLIBURTON GRAND JUNCTION

8 5/8 SURFACE



Event Log

1	Start Job	01:24:14	2	Pressure Test	01:24:32	3	Pump Dye And Ployflake	01:27:10
4	Pump H2O Spacer	01:30:48	5	Pump Lead Cement	01:40:09	6	Pump Tail Cement	01:48:21
7	Shutdown	01:55:13	8	Drop Plug	01:56:51	9	Start Displacement	01:57:19
10	Slowed Rate	02:03:45	11	Bump Plug	02:11:03	12	Check Floats	02:12:15
13	End Job	02:12:38						

Customer:	CHEVRON	Job Date:	01/03/09	Ticket #:	6421417
Well Description:	8 5/8 SURFACE	WELL NAME & #	SKR 598-36-BV-17	Company Rep	ED DOHERTY
Supervisor	CHAD MAIN	Operator	RICHARD HODO	Truck	ZS4

CemWin v1.7.2
04-Jan-09 02:25