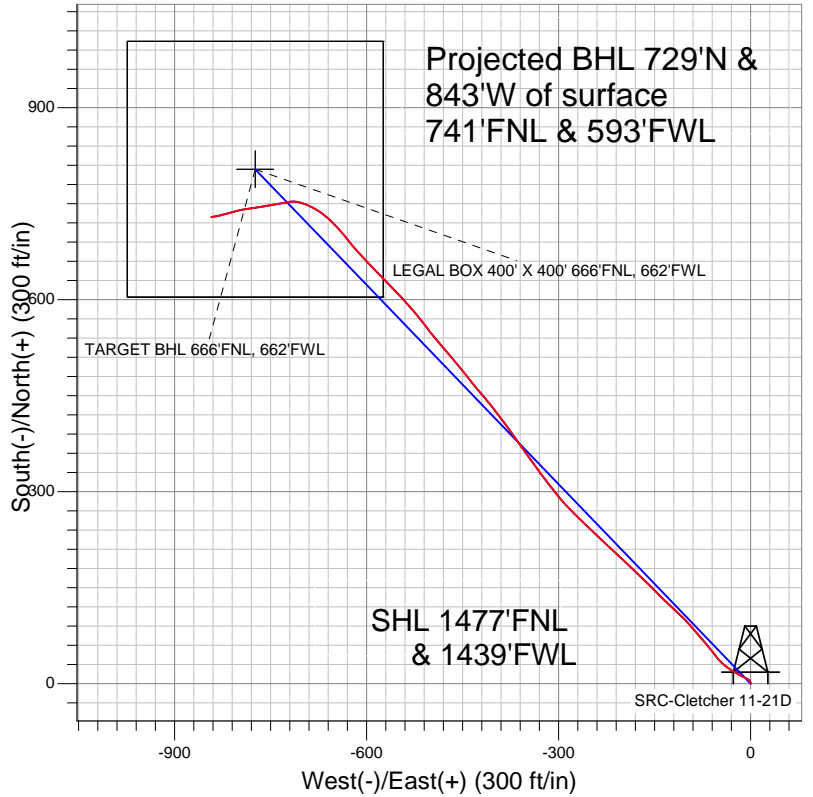


## Synergy Resources



### LEGEND

- ▲ SRC-Cletcher 11-21D, SRC-Cletcher 11-21D, SRC-Cletcher 11-21D Plan #2 (8-29-11) V0
- SRC-Cletcher 11-21D
- Survey #1

## Final Survey Plot

Projected Final Survey -  
 6902'MD & 6761'TVD @ 1109' VS  
 5.7 deg Inc 259.8 deg AZ

Project: SEC.21-T4N-R68W  
 Site: SRC-Cletcher Pad Sec.21-T4N-R68W  
 Well: SRC-Cletcher 11-21D  
 Plan: SRC-Cletcher 11-21D



## **Synergy Resources**

**SEC.21-T4N-R68W**

**SRC-Cletcher Pad Sec.21-T4N-R68W**

**SRC-Cletcher 11-21D**

**SRC-Cletcher 11-21D**

**Survey: Survey #1**

## **Standard Survey Report**

**20 September, 2011**

Survey										
Measured Depth (ft)	Inclination (°)	Azimuth (°)	Vertical Depth (ft)	+N/-S (ft)	+E/-W (ft)	Vertical Section (ft)	Dogleg Rate (°/100ft)	Build Rate (°/100ft)	Turn Rate (°/100ft)	
0.0	0.00	0.00	0.0	0.0	0.0	0.0	0.00	0.00	0.00	
155.0	1.20	353.60	155.0	1.6	-0.2	1.3	0.77	0.77	0.00	
246.0	1.50	327.40	246.0	3.6	-0.9	3.2	0.75	0.33	-28.79	
338.0	1.80	313.70	337.9	5.6	-2.6	5.8	0.54	0.33	-14.89	
428.0	2.60	295.10	427.9	7.4	-5.5	9.2	1.18	0.89	-20.67	
520.0	3.30	299.00	519.7	9.6	-9.7	13.6	0.79	0.76	4.24	
569.0	3.70	299.60	568.6	11.1	-12.3	16.5	0.82	0.82	1.22	
765.0	4.30	295.60	764.2	17.4	-24.4	29.4	0.34	0.31	-2.04	
859.0	5.30	306.50	857.8	21.5	-31.1	37.0	1.44	1.06	11.60	
953.0	6.00	307.70	951.4	27.0	-38.5	46.2	0.76	0.74	1.28	
1,047.0	7.00	312.50	1,044.8	33.9	-46.6	56.7	1.21	1.06	5.11	
1,140.0	8.30	324.60	1,137.0	43.2	-54.7	69.0	2.22	1.40	13.01	
1,234.0	11.00	321.10	1,229.6	55.7	-64.2	84.7	2.94	2.87	-3.72	

<b>Company:</b>	Synergy Resources	<b>Local Co-ordinate Reference:</b>	Well SRC-Cletcher 11-21D
<b>Project:</b>	SEC.21-T4N-R68W	<b>TVD Reference:</b>	WELL @ 4948.0ft (Original Well Elev.)
<b>Site:</b>	SRC-Cletcher Pad Sec.21-T4N-R68W	<b>MD Reference:</b>	WELL @ 4948.0ft (Original Well Elev.)
<b>Well:</b>	SRC-Cletcher 11-21D	<b>North Reference:</b>	True
<b>Wellbore:</b>	SRC-Cletcher 11-21D	<b>Survey Calculation Method:</b>	Minimum Curvature
<b>Design:</b>	SRC-Cletcher 11-21D	<b>Database:</b>	Landmark

Survey										
Measured Depth (ft)	Inclination (°)	Azimuth (°)	Vertical Depth (ft)	+N/-S (ft)	+E/-W (ft)	Vertical Section (ft)	Dogleg Rate (°/100ft)	Build Rate (°/100ft)	Turn Rate (°/100ft)	
1,328.0	13.10	318.50	1,321.5	70.7	-76.9	104.3	2.31	2.23	-2.77	
1,422.0	14.90	319.70	1,412.7	87.9	-91.8	127.0	1.94	1.91	1.28	
1,515.0	15.20	314.30	1,502.6	105.5	-108.2	151.1	1.54	0.32	-5.81	
1,609.0	16.00	311.80	1,593.1	122.8	-126.7	176.3	1.11	0.85	-2.66	
1,703.0	16.40	315.80	1,683.4	140.9	-145.6	202.5	1.26	0.43	4.26	
1,796.0	16.30	315.50	1,772.6	159.6	-163.9	228.7	0.14	-0.11	-0.32	
1,890.0	16.00	312.50	1,862.9	177.8	-182.7	254.8	0.94	-0.32	-3.19	
1,984.0	16.40	312.50	1,953.2	195.5	-202.1	281.0	0.43	0.43	0.00	
2,078.0	16.30	313.70	2,043.4	213.6	-221.4	307.4	0.37	-0.11	1.28	
2,172.0	17.10	313.70	2,133.4	232.3	-240.9	334.4	0.85	0.85	0.00	
2,266.0	16.40	313.20	2,223.4	250.9	-260.6	361.5	0.76	-0.74	-0.53	
2,360.0	17.00	315.10	2,313.4	269.7	-280.0	388.5	0.86	0.64	2.02	
2,453.0	16.70	321.10	2,402.5	289.7	-297.9	415.4	1.90	-0.32	6.45	
2,547.0	17.20	321.60	2,492.4	311.1	-315.1	442.7	0.55	0.53	0.53	
2,641.0	18.50	324.40	2,581.9	334.2	-332.4	471.2	1.66	1.38	2.98	
2,734.0	18.60	324.60	2,670.0	358.2	-349.6	500.5	0.13	0.11	0.22	
2,828.0	18.60	324.60	2,759.1	382.7	-366.9	530.2	0.00	0.00	0.00	
2,922.0	16.90	323.40	2,848.6	405.9	-383.8	558.5	1.85	-1.81	-1.28	
3,015.0	16.30	322.30	2,937.8	427.1	-399.8	584.9	0.73	-0.65	-1.18	
3,109.0	17.00	318.80	3,027.8	447.8	-416.9	611.8	1.30	0.74	-3.72	
3,203.0	16.60	322.20	3,117.8	468.8	-434.2	638.8	1.13	-0.43	3.62	
3,296.0	16.40	321.30	3,207.0	489.5	-450.5	665.1	0.35	-0.22	-0.97	
3,390.0	16.10	319.50	3,297.2	509.8	-467.3	691.4	0.62	-0.32	-1.91	
3,484.0	16.00	319.00	3,387.6	529.5	-484.3	717.3	0.18	-0.11	-0.53	
3,578.0	17.10	321.60	3,477.7	550.1	-501.4	744.0	1.41	1.17	2.77	
3,672.0	17.70	321.60	3,567.4	572.1	-518.8	772.0	0.64	0.64	0.00	
3,766.0	17.60	318.80	3,656.9	594.0	-537.1	800.4	0.91	-0.11	-2.98	
3,859.0	16.30	316.20	3,745.9	614.0	-555.3	827.5	1.62	-1.40	-2.80	
3,953.0	16.00	315.30	3,836.2	632.7	-573.6	853.6	0.42	-0.32	-0.96	
4,047.0	15.40	315.70	3,926.7	650.9	-591.4	879.1	0.65	-0.64	0.43	
4,140.0	14.80	317.20	4,016.5	668.4	-608.1	903.3	0.77	-0.65	1.61	
4,234.0	13.20	320.90	4,107.7	685.6	-623.0	926.0	1.95	-1.70	3.94	
4,328.0	12.20	320.40	4,199.4	701.6	-636.1	946.6	1.07	-1.06	-0.53	
4,421.0	10.20	315.70	4,290.6	715.0	-648.2	964.6	2.36	-2.15	-5.05	
4,515.0	9.00	313.70	4,383.3	726.1	-659.3	980.3	1.32	-1.28	-2.13	
4,608.0	7.50	306.00	4,475.3	734.6	-669.5	993.5	2.00	-1.61	-8.28	
4,702.0	6.80	298.60	4,568.6	740.9	-679.3	1,004.9	1.23	-0.74	-7.87	
4,796.0	6.20	296.70	4,662.0	745.9	-688.7	1,015.0	0.68	-0.64	-2.02	
4,890.0	6.20	290.30	4,755.4	749.9	-698.0	1,024.4	0.73	0.00	-6.81	
4,984.0	6.10	280.30	4,848.9	752.6	-707.7	1,033.0	1.14	-0.11	-10.64	
5,078.0	4.40	267.80	4,942.5	753.3	-716.2	1,039.4	2.17	-1.81	-13.30	
5,172.0	3.20	251.70	5,036.3	752.4	-722.3	1,043.0	1.70	-1.28	-17.13	
5,266.0	1.40	269.60	5,130.2	751.5	-726.0	1,044.9	2.04	-1.91	19.04	
5,359.0	0.30	219.20	5,223.2	751.3	-727.2	1,045.6	1.32	-1.18	-54.19	
5,452.0	1.50	260.60	5,316.2	750.9	-728.6	1,046.3	1.39	1.29	44.52	
5,545.0	2.80	264.20	5,409.1	750.5	-732.1	1,048.4	1.40	1.40	3.87	
5,641.0	3.80	259.80	5,505.0	749.7	-737.5	1,051.6	1.07	1.04	-4.58	
5,734.0	4.30	260.60	5,597.7	748.6	-744.0	1,055.3	0.54	0.54	0.86	
5,737.8	4.31	260.54	5,601.5	748.5	-744.3	1,055.5	0.34	0.31	-1.57	
TARGET BHL 666'FNL, 662'FWL										
5,829.0	4.60	259.20	5,692.5	747.3	-751.3	1,059.4	0.34	0.32	-1.47	
5,922.0	4.40	261.30	5,785.2	746.1	-758.4	1,063.5	0.28	-0.22	2.26	
6,016.0	4.50	260.60	5,878.9	744.9	-765.6	1,067.7	0.12	0.11	-0.74	
6,110.0	4.70	259.20	5,972.6	743.6	-773.1	1,071.9	0.24	0.21	-1.49	

<b>Company:</b>	Synergy Resources	<b>Local Co-ordinate Reference:</b>	Well SRC-Cletcher 11-21D
<b>Project:</b>	SEC.21-T4N-R68W	<b>TVD Reference:</b>	WELL @ 4948.0ft (Original Well Elev.)
<b>Site:</b>	SRC-Cletcher Pad Sec.21-T4N-R68W	<b>MD Reference:</b>	WELL @ 4948.0ft (Original Well Elev.)
<b>Well:</b>	SRC-Cletcher 11-21D	<b>North Reference:</b>	True
<b>Wellbore:</b>	SRC-Cletcher 11-21D	<b>Survey Calculation Method:</b>	Minimum Curvature
<b>Design:</b>	SRC-Cletcher 11-21D	<b>Database:</b>	Landmark

Survey										
Measured Depth (ft)	Inclination (°)	Azimuth (°)	Vertical Depth (ft)	+N/-S (ft)	+E/-W (ft)	Vertical Section (ft)	Dogleg Rate (°/100ft)	Build Rate (°/100ft)	Turn Rate (°/100ft)	
6,204.0	4.90	264.00	6,066.2	742.4	-780.8	1,076.4	0.48	0.21	5.11	
6,298.0	4.80	263.30	6,159.9	741.6	-788.7	1,081.3	0.12	-0.11	-0.74	
6,335.8	4.83	260.37	6,197.6	741.1	-791.9	1,083.1	0.66	0.08	-7.75	
LEGAL BOX 400' X 400' 666'FNL, 662'FWL										
6,392.0	4.90	256.10	6,253.6	740.1	-796.5	1,085.7	0.66	0.12	-7.60	
6,579.0	5.20	252.90	6,439.9	735.7	-812.4	1,093.5	0.22	0.16	-1.71	
6,766.0	5.60	257.70	6,626.0	731.3	-829.4	1,102.1	0.32	0.21	2.57	
6,858.0	5.70	259.80	6,717.6	729.5	-838.3	1,107.0	0.25	0.11	2.28	
6,902.0	5.70	259.80	6,761.4	728.8	-842.6	1,109.4	0.00	0.00	0.00	

Checked By: _____	Approved By: _____	Date: _____
-------------------	--------------------	-------------