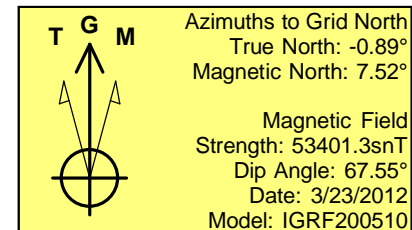
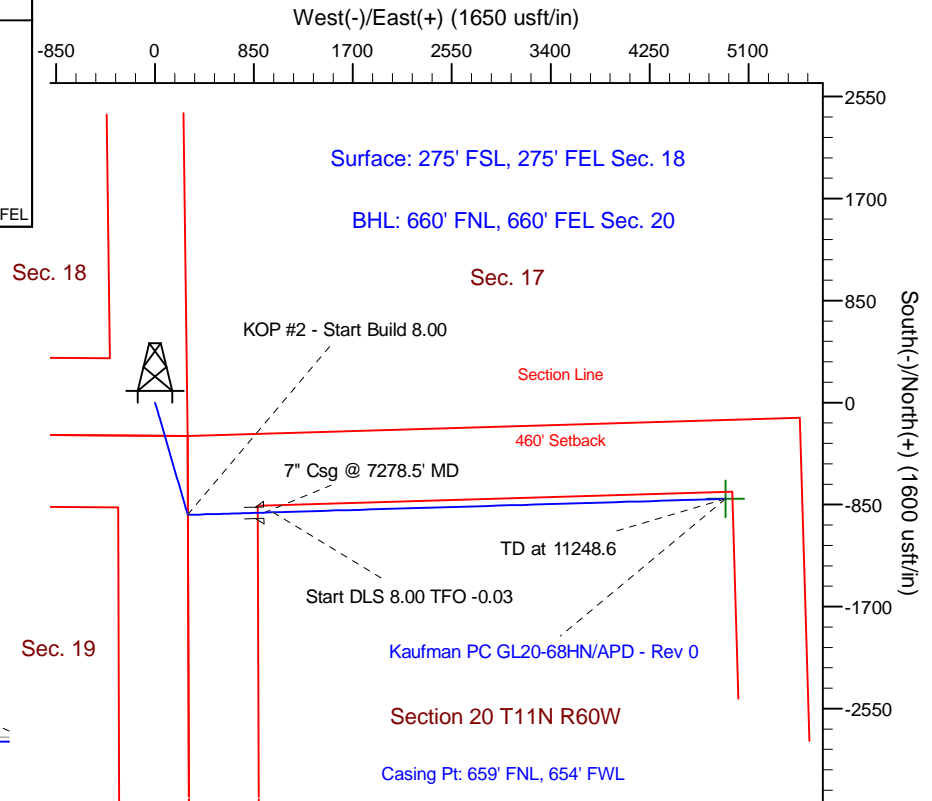
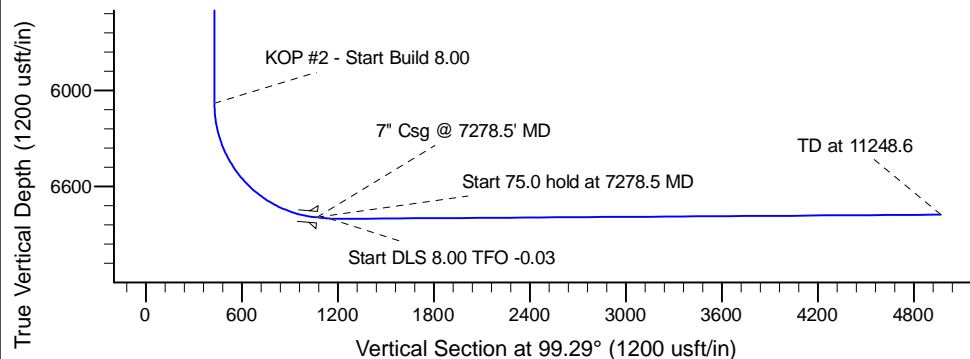
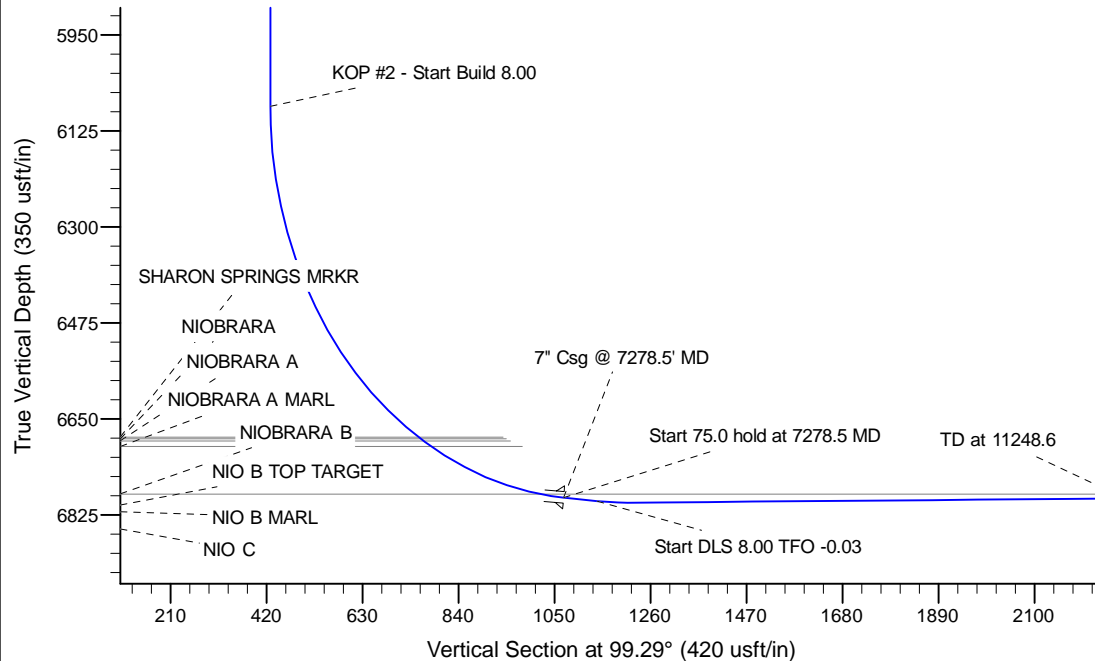


Project: Wattenberg Field
 Site: GL (Sec.18-T11N-R60W) Weld County, CO
 Well: Kaufman PC GL20-68HN
 Wellbore: Original Drilling
 Design: APD - Rev 0

Northern Region Drilling

Geodetic System: US State Plane 1983
 Datum: North American Datum 1983
 Ellipsoid: GRS 1980
 Zone: Colorado Northern Zone
 System Datum: Mean Sea Level

SECTION DETAILS										
Sec	MD	Inc	Azi	TVD	+N/-S	+E/-W	Dleg	TFace	Vsect	Target
1	0.0	0.00	0.00	0.0	0.0	0.0	0.00	0.00	0.0	
2	1500.0	0.00	0.00	1500.0	0.0	0.0	0.00	0.00	0.0	
3	2180.9	17.02	163.27	2170.9	-96.1	28.9	2.50	163.27	44.0	
4	4830.1	17.02	163.27	4704.1	-838.9	252.1	0.00	0.00	384.2	
5	5511.0	0.00	0.00	5375.0	-935.0	281.0	2.50	180.00	428.2	
6	6216.0	0.00	0.00	6080.0	-935.0	281.0	0.00	0.00	428.2	
7	7278.5	85.00	88.35	6793.5	-916.2	934.5	8.00	88.35	1070.1	
8	7353.5	85.00	88.35	6800.0	-914.0	1009.2	0.00	0.00	1143.5	
9	7420.9	90.40	88.35	6802.7	-912.1	1076.5	8.00	-0.03	1209.6	
10	11248.6	90.40	88.35	6776.3	-801.7	4902.5	0.00	0.00	4967.6	Kaufman PC GL20-68HN BHL 660'FNL, 660'FEL



WELL DETAILS: Kaufman PC GL20-68HN			
Ground Level: 5282.0			
Northing	Easting	Latitude	Longitude
1579124.76	3379742.57	40.914990	-104.126030

Plan: APD - Rev 0 (Kaufman PC GL20-68HN/Original Drilling)	
Created By: Carrie Willers	Date: 9:46, April 09 2012

OK to submit with 2A as per Noble Drilling
 4/9/2012 10:30