

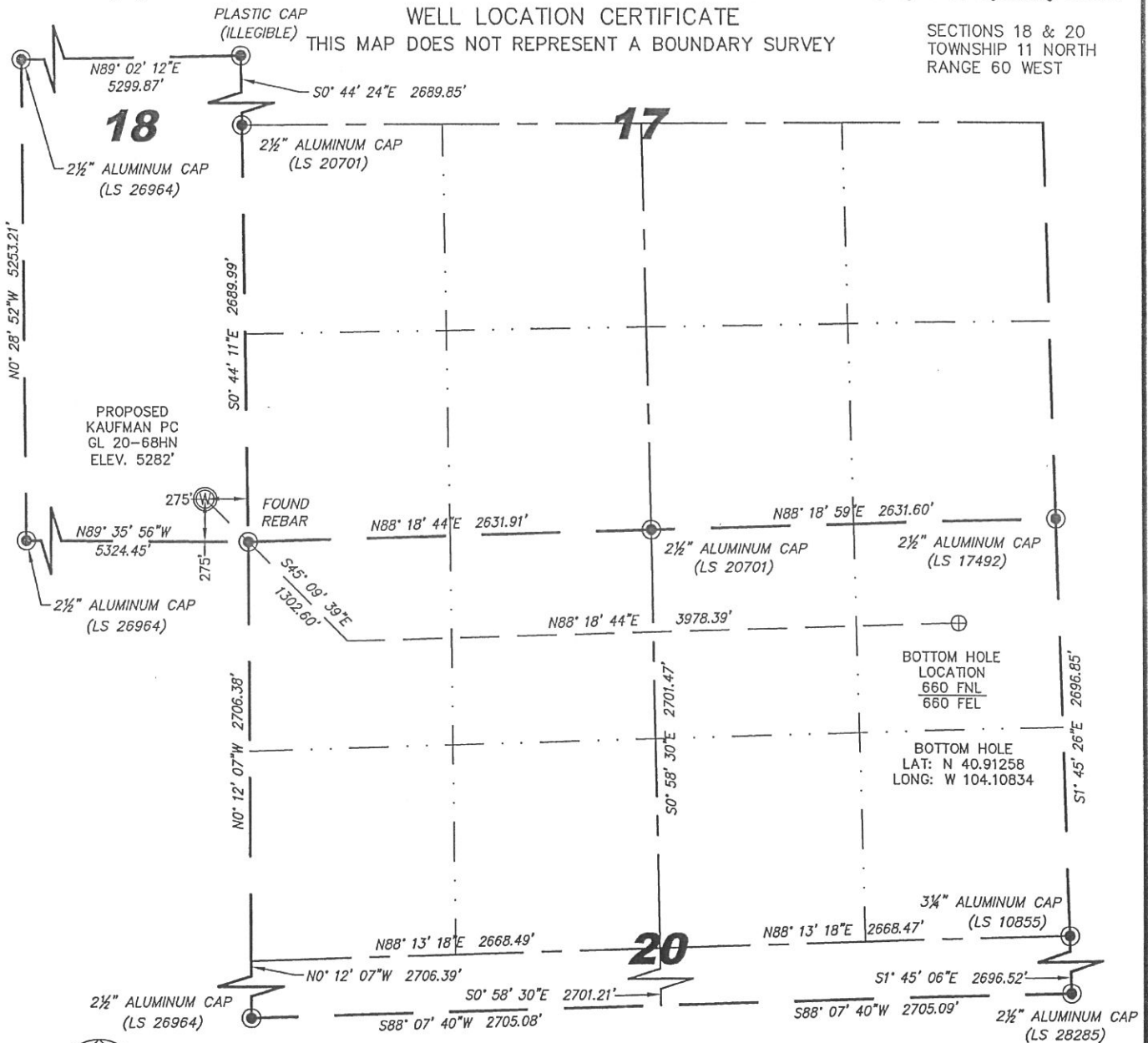
Steil Surveying Services, LLC

1102 West 19th Street P.O. BOX 2073

Cheyenne, Wyoming 82001

WELL LOCATION CERTIFICATE

THIS MAP DOES NOT REPRESENT A BOUNDARY SURVEY

SECTIONS 18 & 20
TOWNSHIP 11 NORTH
RANGE 60 WEST

Scale: 1" = 1000'

NOTES:

- 1) BASIS OF BEARINGS FOR THIS MAP ARE BASED UPON GPS OBSERVATIONS MADE ON 01/26/2012 BETWEEN MONUMENTS LOCATED AT THE SOUTHEAST SECTION CORNER AND THE EAST QUARTER CORNER OF SAID SECTION 12 AND WITH ALL BEARINGS SHOWN HEREON RELATIVE THERETO.
- 2) COORDINATES SHOWN ARE COLORADO STATE PLANE (NORTH ZONE) NAD 83
- 3) ELEVATIONS ARE BASED UPON NGS OPUS SOLUTION NAVD 88 DATUM.
- 4) THE NEAREST EXISTING WELL IS: N/A.
- 5) SEE LOCATION DRAWING FOR ALL IMPROVEMENTS WITHIN VISIBLE IMPROVEMENT LIMIT.
- 6) THE LOCATION FALLS IN PASTURE LAND.

NOTICE: According to Colorado law you MUST commence any legal action based upon any defect in this W.L.C. within three years after you first discover such defect. In no event may any action based upon any defect in this W.L.C. be commenced more than ten years from the date of the certification shown hereon.

IN ACCORDANCE WITH A REQUEST FROM JIM CURRY - NOBLE ENERGY INC. STEIL SURVEYING SERVICES, LLC HAS DETERMINED THE SURFACE HOLE LOCATION OF THE KAUFMAN PC GL 20-68HN WELL TO BE 275' FSL, 275' FEL, AS MEASURED AT NINETY (90) DEGREES FROM THE SECTION LINES, SECTION 18, TOWNSHIP 11 NORTH, RANGE 60 WEST, 6TH PRINCIPLE MERIDIAN, WELD COUNTY, COLORADO.

I HEREBY CERTIFY THAT THIS WELL LOCATION CERTIFICATE WAS PREPARED BY ME, OR UNDER MY DIRECT SUPERVISION, THAT THE FIELD WORK WAS COMPLETED ON 01/26/2012, FOR AND ON BEHALF OF NOBLE ENERGY INC. THAT IT IS NOT A LAND SURVEY PLAT OR AN IMPROVEMENT SURVEY PLAT, AND THAT IT IS NOT TO BE RELIED UPON FOR ESTABLISHMENT OF FENCE, BUILDING, OR OTHER FUTURE IMPROVEMENT LINES.

LATITUDE & LONGITUDE (NAD 83 SURFACE HOLE):

LATITUDE: N 40.91499°

LONGITUDE: W 104.12603°

PDOP: 2.0

QUARTER-QUARTER: SE/4SE/4 SEC 18

NEAREST PROPERTY LINE: 275' SOUTH

LEGEND

- FOUND SURVEY MONUMENT PER MONUMENT RECORD - EXCEPTIONS NOTED.
- (C) CALCULATED DIMENSION



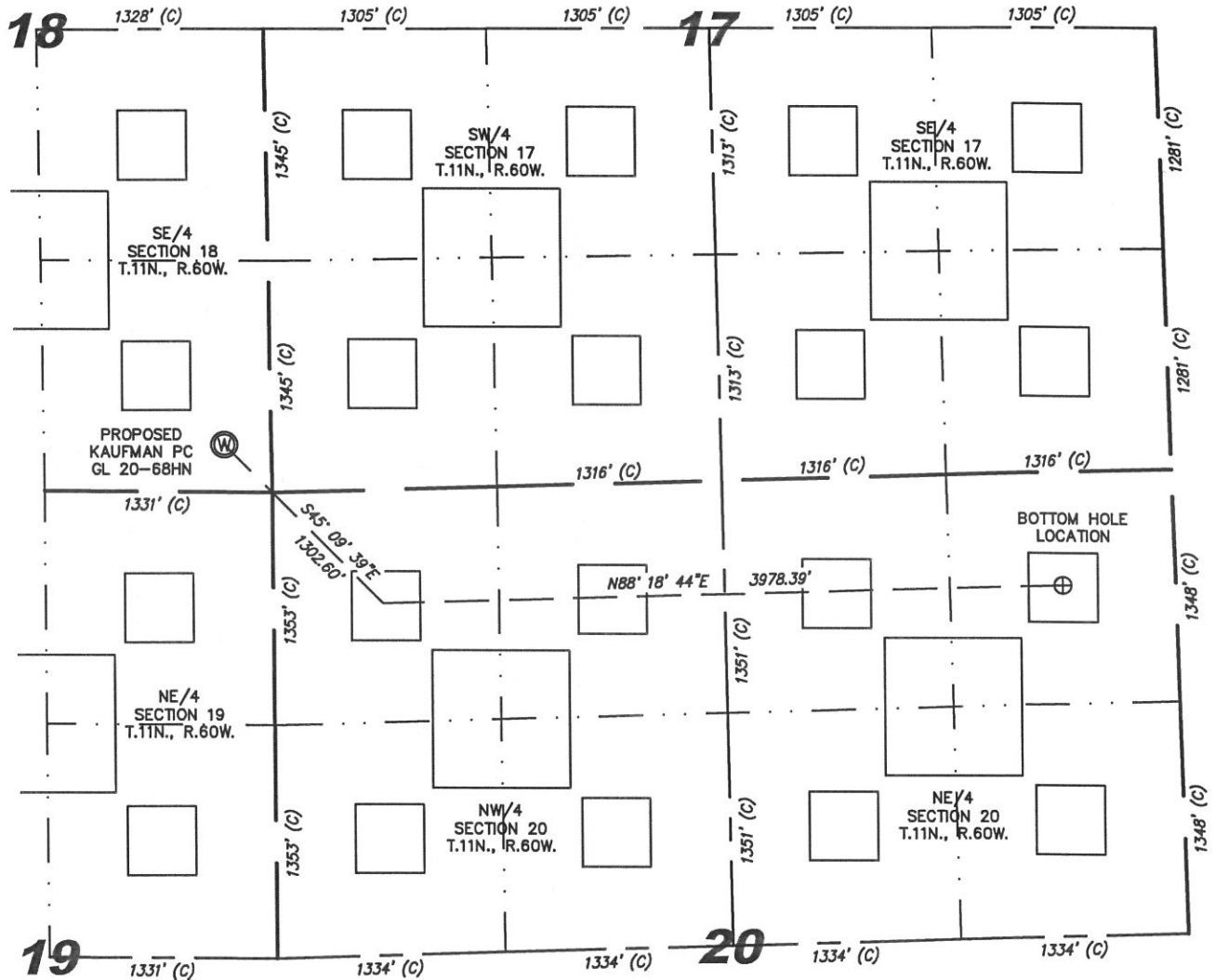
Completed 01/30/2012

Jeffrey B. Jones
Professional Land Surveyor Registration No. 37920
State of Colorado

JOB #: 11086

SKETCH — KAUFMAN PC GL 20-68HN

SECTION 18
TOWNSHIP 11 NORTH
RANGE 60 WEST



THERE ARE NO EXISTING WELLS IN THIS SECTION.

NOTES:

- 1) THIS SKETCH DOES NOT REPRESENT A BOUNDARY SURVEY.
- 2) THE DATUM FOR THE LATITUDES AND LONGITUDES ON THIS SKETCH IS NAD83.

